



Full wwPDB X-ray Structure Validation Report ⓘ

Feb 28, 2026 – 05:33 PM UTC

PDB ID : 4XO7 / pdb_00004xo7
Title : Crystal structure of human 3-alpha hydroxysteroid dehydrogenase type 3 in complex with NADP+, 5alpha-androstan-3,17-dione and (3beta, 5alpha)-3-hydroxyandrostan-17-one
Authors : Zhang, B.; Hu, X.-J.; Lin, S.-X.
Deposited on : 2015-01-16
Resolution : 1.75 Å(reported)

This is a Full wwPDB X-ray Structure Validation Report for a publicly released PDB entry.

We welcome your comments at validation@mail.wwpdb.org

A user guide is available at

<https://www.wwpdb.org/validation/2017/XrayValidationReportHelp>

with specific help available everywhere you see the ⓘ symbol.

The types of validation reports are described at

<http://www.wwpdb.org/validation/2017/FAQs#types>.

The following versions of software and data (see [references ⓘ](#)) were used in the production of this report:

MolProbity	:	4-5-2 with Phenix2.0
Mogul	:	2022.3.0, CSD as543be (2022)
Xtriage (Phenix)	:	2.0
EDS	:	3.0
Buster-report	:	wwPDB partial adaption of 1.1.7 (2018)
Percentile statistics	:	20250101.v01 (using entries in the PDB archive January 1st 2025)
CCP4	:	9.0.010 (Gargrove)
Density-Fitness	:	1.0.12
Ideal geometry (proteins)	:	Engh & Huber (2001)
Ideal geometry (DNA, RNA)	:	Parkinson et al. (1996)
Validation Pipeline (wwPDB-VP)	:	2.49

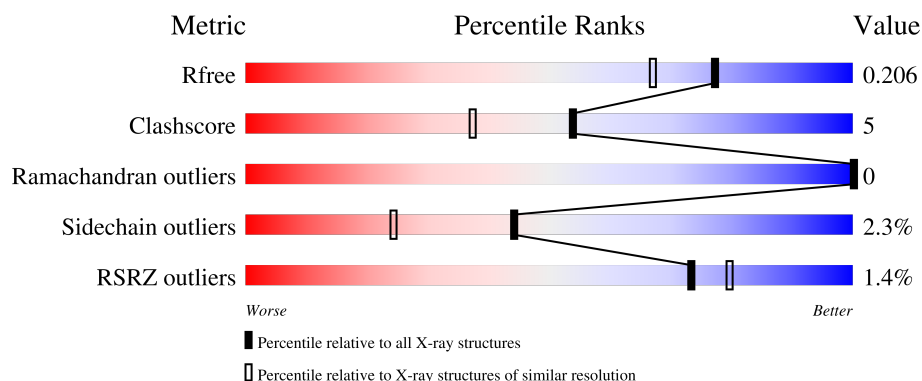
1 Overall quality at a glance

The following experimental techniques were used to determine the structure:

X-RAY DIFFRACTION

The reported resolution of this entry is 1.75 Å.

Percentile scores (ranging between 0-100) for global validation metrics of the entry are shown in the following graphic. The table shows the number of entries on which the scores are based.



Metric	Whole archive (#Entries)	Similar resolution (#Entries, resolution range(Å))
R_{free}	180053	3183 (1.76-1.76)
Clashscore	190562	3299 (1.76-1.76)
Ramachandran outliers	187476	3274 (1.76-1.76)
Sidechain outliers	187428	3274 (1.76-1.76)
RSRZ outliers	180081	3183 (1.76-1.76)

The table below summarises the geometric issues observed across the polymeric chains and their fit to the electron density. The red, orange, yellow and green segments of the lower bar indicate the fraction of residues that contain outliers for ≥ 3 , 2, 1 and 0 types of geometric quality criteria respectively. A grey segment represents the fraction of residues that are not modelled. The numeric value for each fraction is indicated below the corresponding segment, with a dot representing fractions $\leq 5\%$. The upper red bar (where present) indicates the fraction of residues that have poor fit to the electron density. The numeric value is given above the bar.

Mol	Chain	Length	Quality of chain
1	A	323	<div> <div style="width: 100%; height: 10px; background: linear-gradient(to right, red, orange, yellow, green);"></div> <div style="display: flex; justify-content: space-between; width: 100%;"> 86% 11% </div> </div>
1	B	323	<div> <div style="width: 100%; height: 10px; background: linear-gradient(to right, red, orange, yellow, green);"></div> <div style="display: flex; justify-content: space-between; width: 100%;"> 86% 13% </div> </div>

2 Entry composition [i](#)

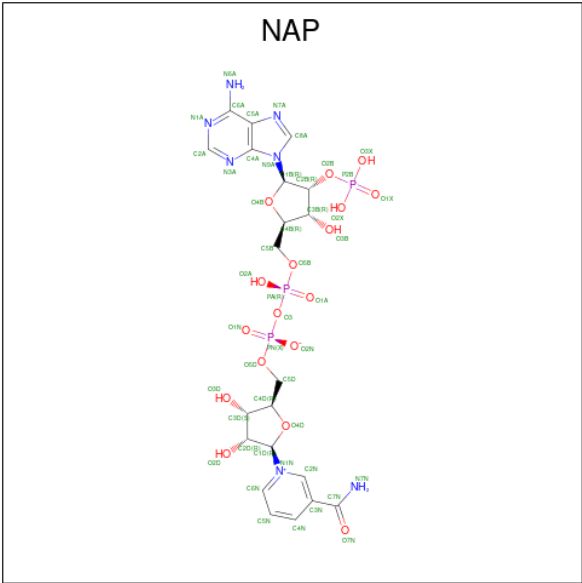
There are 5 unique types of molecules in this entry. The entry contains 5648 atoms, of which 0 are hydrogens and 0 are deuteriums.

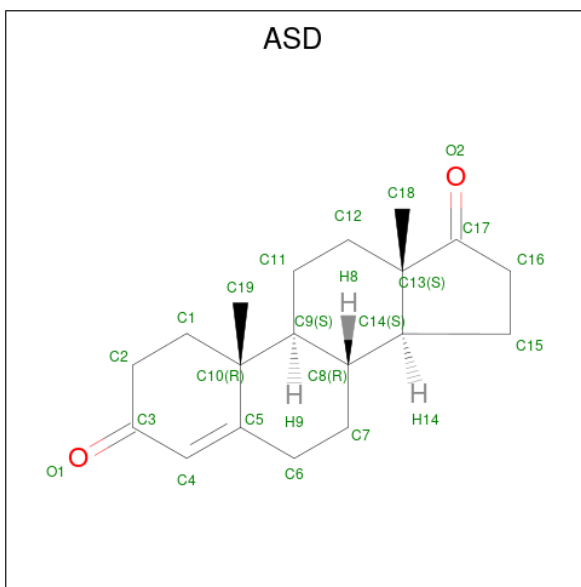
In the tables below, the ZeroOcc column contains the number of atoms modelled with zero occupancy, the AltConf column contains the number of residues with at least one atom in alternate conformation and the Trace column contains the number of residues modelled with at most 2 atoms.

- Molecule 1 is a protein called Aldo-keto reductase family 1 member C2.

Mol	Chain	Residues	Atoms					ZeroOcc	AltConf	Trace
1	A	322	Total	C	N	O	S	0	1	0
			2584	1655	444	473	12			
1	B	322	Total	C	N	O	S	0	0	0
			2581	1653	444	473	11			

- Molecule 2 is NADP NICOTINAMIDE-ADENINE-DINUCLEOTIDE PHOSPHATE (CCD ID: NAP) (formula: C₂₁H₂₈N₇O₁₇P₃).





Mol	Chain	Residues	Atoms			ZeroOcc	AltConf
3	A	1	Total	C	O	0	0
			21	19	2		
3	B	1	Total	C	O	0	0
			21	19	2		

- Molecule 4 is SULFATE ION (CCD ID: SO4) (formula: O₄S).



Mol	Chain	Residues	Atoms			ZeroOcc	AltConf
4	A	1	Total	O	S	0	0
			5	4	1		
4	B	1	Total	O	S	0	0
			5	4	1		

- Molecule 5 is water.

Mol	Chain	Residues	Atoms		ZeroOcc	AltConf
5	A	179	Total 179	O 179	0	0
5	B	156	Total 156	O 156	0	0

4 Data and refinement statistics

Property	Value	Source
Space group	P 1 21 1	Depositor
Cell constants a, b, c, α , β , γ	52.90Å 86.65Å 76.99Å 90.00° 106.25° 90.00°	Depositor
Resolution (Å)	25.00 – 1.75 25.00 – 1.75	Depositor EDS
% Data completeness (in resolution range)	99.2 (25.00-1.75) 99.2 (25.00-1.75)	Depositor EDS
R_{merge}	(Not available)	Depositor
R_{sym}	(Not available)	Depositor
$\langle I/\sigma(I) \rangle$ ¹	3.34 (at 1.75Å)	Xtriage
Refinement program	REFMAC 5.6.0117	Depositor
R, R_{free}	0.162 , 0.205 0.166 , 0.206	Depositor DCC
R_{free} test set	3382 reflections (5.04%)	wwPDB-VP
Wilson B-factor (Å ²)	11.5	Xtriage
Anisotropy	0.091	Xtriage
Bulk solvent k_{sol} (e/Å ³), B_{sol} (Å ²)	0.41 , 45.7	EDS
L-test for twinning ²	$\langle L \rangle = 0.48$, $\langle L^2 \rangle = 0.31$	Xtriage
Estimated twinning fraction	No twinning to report.	Xtriage
F_o, F_c correlation	0.95	EDS
Total number of atoms	5648	wwPDB-VP
Average B, all atoms (Å ²)	13.0	wwPDB-VP

Xtriage's analysis on translational NCS is as follows: *The largest off-origin peak in the Patterson function is 6.30% of the height of the origin peak. No significant pseudotranslation is detected.*

¹Intensities estimated from amplitudes.

²Theoretical values of $\langle |L| \rangle$, $\langle L^2 \rangle$ for acentric reflections are 0.5, 0.333 respectively for untwinned datasets, and 0.375, 0.2 for perfectly twinned datasets.

5 Model quality [i](#)

5.1 Standard geometry [i](#)

Bond lengths and bond angles in the following residue types are not validated in this section: SO4, ASD, NAP

The Z score for a bond length (or angle) is the number of standard deviations the observed value is removed from the expected value. A bond length (or angle) with $|Z| > 5$ is considered an outlier worth inspection. RMSZ is the root-mean-square of all Z scores of the bond lengths (or angles).

Mol	Chain	Bond lengths		Bond angles	
		RMSZ	$\# Z > 5$	RMSZ	$\# Z > 5$
1	A	1.51	13/2648 (0.5%)	1.27	8/3586 (0.2%)
1	B	1.48	25/2642 (0.9%)	1.24	4/3578 (0.1%)
All	All	1.49	38/5290 (0.7%)	1.26	12/7164 (0.2%)

All (38) bond length outliers are listed below:

Mol	Chain	Res	Type	Atoms	Z	Observed(Å)	Ideal(Å)
1	B	251	THR	C-O	-10.57	1.13	1.24
1	B	49	ILE	C-O	-9.27	1.14	1.24
1	B	280	ASN	C-O	-7.23	1.15	1.24
1	B	193	CYS	C-O	-7.16	1.15	1.23
1	B	51	SER	C-O	-6.70	1.17	1.24
1	A	52	ALA	C-O	-6.70	1.15	1.23
1	B	52	ALA	C-O	-6.46	1.16	1.23
1	B	224	GLU	C-O	-6.39	1.16	1.23
1	B	218	ALA	C-O	-6.30	1.15	1.24
1	B	281	VAL	C-O	-6.23	1.15	1.24
1	B	53	HIS	C-O	-6.11	1.17	1.24
1	B	295	ALA	CA-C	6.09	1.60	1.52
1	A	207	LYS	N-CA	6.07	1.53	1.46
1	B	195	PRO	N-CD	5.97	1.56	1.47
1	A	220	GLY	C-O	-5.90	1.16	1.24
1	A	182	LEU	N-CA	5.84	1.53	1.46
1	A	219	LEU	C-O	-5.67	1.16	1.24
1	B	252	PRO	N-CD	5.66	1.55	1.47
1	B	301	ARG	C-O	-5.66	1.18	1.24
1	A	272	TYR	N-CA	5.54	1.52	1.46
1	B	200	ARG	C-O	-5.54	1.17	1.24
1	A	221	SER	C-O	-5.54	1.17	1.24
1	B	283	VAL	C-O	-5.46	1.17	1.24
1	B	282	GLN	C-O	-5.41	1.16	1.24

Continued on next page...

Continued from previous page...

Mol	Chain	Res	Type	Atoms	Z	Observed(Å)	Ideal(Å)
1	A	251	THR	C-O	-5.40	1.19	1.24
1	A	90	HIS	CG-ND1	-5.29	1.32	1.38
1	B	117	HIS	CE1-NE2	5.27	1.37	1.32
1	A	314	PRO	CA-C	5.26	1.54	1.51
1	A	287	GLN	C-O	5.20	1.30	1.23
1	B	164	GLY	N-CA	5.19	1.50	1.44
1	B	252	PRO	C-O	-5.15	1.17	1.24
1	B	8	VAL	N-CA	5.13	1.52	1.46
1	B	82	THR	N-CA	5.11	1.52	1.46
1	A	26	PRO	C-O	5.11	1.29	1.23
1	B	50	ASP	C-O	-5.06	1.18	1.24
1	B	298	GLY	C-O	-5.04	1.18	1.24
1	B	303	VAL	C-O	-5.02	1.18	1.24
1	A	15	PHE	N-CA	5.00	1.52	1.46

All (12) bond angle outliers are listed below:

Mol	Chain	Res	Type	Atoms	Z	Observed(°)	Ideal(°)
1	A	29	VAL	N-CA-C	9.49	116.79	108.63
1	B	176	ILE	N-CA-C	6.72	116.88	110.42
1	B	194	HIS	CA-C-N	-6.18	112.48	119.28
1	B	194	HIS	C-N-CA	-6.18	112.48	119.28
1	A	31	LYS	N-CA-C	6.11	118.02	111.36
1	A	66	ARG	N-CA-C	-6.01	104.85	111.82
1	A	16	MET	CA-C-N	-5.71	114.05	119.76
1	A	16	MET	C-N-CA	-5.71	114.05	119.76
1	A	251	THR	O-C-N	5.53	125.25	121.71
1	B	251	THR	O-C-N	5.42	125.78	121.55
1	A	3	SER	N-CA-C	-5.33	106.85	113.19
1	A	274	GLU	N-CA-C	5.20	117.62	111.33

There are no chirality outliers.

There are no planarity outliers.

5.2 Too-close contacts ⓘ

In the following table, the Non-H and H(model) columns list the number of non-hydrogen atoms and hydrogen atoms in the chain respectively. The H(added) column lists the number of hydrogen atoms added and optimized by MolProbity. The Clashes column lists the number of clashes within the asymmetric unit, whereas Symm-Clashes lists symmetry-related clashes.

Mol	Chain	Non-H	H(model)	H(added)	Clashes	Symm-Clashes
1	A	2584	0	2592	26	0
1	B	2581	0	2587	21	0
2	A	48	0	25	8	0
2	B	48	0	25	7	0
3	A	21	0	26	0	0
3	B	21	0	26	6	0
4	A	5	0	0	0	0
4	B	5	0	0	0	0
5	A	179	0	0	4	0
5	B	156	0	0	4	0
All	All	5648	0	5281	52	0

The all-atom clashscore is defined as the number of clashes found per 1000 atoms (including hydrogen atoms). The all-atom clashscore for this structure is 5.

All (52) close contacts within the same asymmetric unit are listed below, sorted by their clash magnitude.

Atom-1	Atom-2	Interatomic distance (Å)	Clash overlap (Å)
1:B:280:ASN:HD21	2:B:401:NAP:H61A	1.27	0.81
1:B:227:TRP:CH2	3:B:402:ASD:H151	2.16	0.81
2:A:401:NAP:C4N	5:A:570:HOH:O	2.28	0.79
2:B:401:NAP:C4N	5:B:558:HOH:O	2.38	0.71
1:A:132:ASP:OD2	1:A:136:LYS:HB3	1.91	0.70
1:B:57:ASN:HD22	1:B:57:ASN:C	1.97	0.68
1:A:54:VAL:HG11	1:A:86:TRP:CD2	2.32	0.64
1:A:132:ASP:OD1	1:A:136:LYS:N	2.32	0.62
1:A:57:ASN:C	1:A:57:ASN:HD22	2.08	0.61
1:A:279:GLN:NE2	2:A:401:NAP:H62A	1.99	0.61
1:A:280:ASN:HD21	2:A:401:NAP:H61A	1.48	0.59
1:B:279:GLN:NE2	2:B:401:NAP:H62A	2.01	0.59
1:B:129:ILE:CD1	3:B:402:ASD:H152	2.33	0.58
2:B:401:NAP:H6N	2:B:401:NAP:H3D	1.88	0.56
3:B:402:ASD:H22	5:B:558:HOH:O	2.07	0.55
1:A:132:ASP:CG	1:A:136:LYS:HB3	2.33	0.53
1:B:129:ILE:HD11	3:B:402:ASD:H152	1.91	0.53
1:B:190:GLN:OE1	2:B:401:NAP:H2N	2.09	0.53
1:A:54:VAL:HG11	1:A:86:TRP:CG	2.44	0.52
1:A:2:ASP:C	1:A:4:LYS:H	2.19	0.50
1:A:31:LYS:HD3	1:A:31:LYS:HA	1.62	0.47
1:A:282:GLN:HA	1:A:285:GLU:HG3	1.95	0.47
1:B:280:ASN:ND2	2:B:401:NAP:H61A	2.05	0.47
1:A:77:GLU:H	1:A:77:GLU:CD	2.23	0.46

Continued on next page...

Continued from previous page...

Atom-1	Atom-2	Interatomic distance (Å)	Clash overlap (Å)
1:A:54:VAL:HG13	1:A:86:TRP:HB2	1.97	0.46
1:A:280:ASN:ND2	2:A:401:NAP:H61A	2.14	0.45
1:B:86:TRP:CG	1:B:87:SER:H	2.34	0.45
1:B:270:LYS:O	2:B:401:NAP:H8A	2.16	0.45
1:A:190:GLN:OE1	2:A:401:NAP:H2N	2.17	0.45
1:A:6:GLN:HE21	1:B:9:LYS:H	1.64	0.45
1:A:31:LYS:C	1:A:33:LYS:N	2.75	0.44
1:B:92:PRO:HG3	1:B:146:ALA:HB1	1.99	0.44
1:A:54:VAL:CG1	1:A:86:TRP:CG	3.01	0.44
1:B:57:ASN:C	1:B:57:ASN:ND2	2.67	0.44
1:A:118:PHE:CE1	1:A:308:LEU:HD23	2.53	0.44
1:A:270:LYS:O	2:A:401:NAP:H8A	2.19	0.43
1:B:129:ILE:HD12	3:B:402:ASD:H152	2.01	0.43
1:B:179:LYS:HB3	1:B:179:LYS:HE3	1.81	0.43
1:B:145:CYS:HB3	1:B:179:LYS:CD	2.50	0.42
1:A:101:ARG:NH2	5:A:636:HOH:O	2.48	0.42
1:B:86:TRP:CG	1:B:87:SER:N	2.87	0.42
2:A:401:NAP:H6N	2:A:401:NAP:H3D	2.02	0.42
2:A:401:NAP:H51N	5:A:543:HOH:O	2.20	0.42
1:B:227:TRP:CZ2	3:B:402:ASD:H151	2.53	0.41
1:A:2:ASP:C	1:A:4:LYS:N	2.78	0.41
1:B:291:GLU:CD	5:B:522:HOH:O	2.63	0.41
1:B:6:GLN:HG3	5:B:625:HOH:O	2.21	0.41
1:B:270:LYS:C	1:B:270:LYS:HD3	2.46	0.41
1:A:79:ILE:HD13	1:A:79:ILE:HA	1.99	0.40
1:A:101:ARG:HD3	5:A:590:HOH:O	2.21	0.40
1:A:314:PRO:HA	1:A:315:PRO:HD3	1.99	0.40
1:A:57:ASN:C	1:A:57:ASN:ND2	2.77	0.40

There are no symmetry-related clashes.

5.3 Torsion angles [i](#)

5.3.1 Protein backbone [i](#)

In the following table, the Percentiles column shows the percent Ramachandran outliers of the chain as a percentile score with respect to all X-ray entries followed by that with respect to entries of similar resolution.

The Analysed column shows the number of residues for which the backbone conformation was analysed, and the total number of residues.

Mol	Chain	Analysed	Favoured	Allowed	Outliers	Percentiles	
1	A	321/323 (99%)	316 (98%)	5 (2%)	0	100	100
1	B	320/323 (99%)	311 (97%)	9 (3%)	0	100	100
All	All	641/646 (99%)	627 (98%)	14 (2%)	0	100	100

There are no Ramachandran outliers to report.

5.3.2 Protein sidechains ⓘ

In the following table, the Percentiles column shows the percent sidechain outliers of the chain as a percentile score with respect to all X-ray entries followed by that with respect to entries of similar resolution.

The Analysed column shows the number of residues for which the sidechain conformation was analysed, and the total number of residues.

Mol	Chain	Analysed	Rotameric	Outliers	Percentiles	
1	A	285/285 (100%)	277 (97%)	8 (3%)	38	18
1	B	284/285 (100%)	279 (98%)	5 (2%)	51	33
All	All	569/570 (100%)	556 (98%)	13 (2%)	44	24

All (13) residues with a non-rotameric sidechain are listed below:

Mol	Chain	Res	Type
1	A	33	LYS
1	A	57	ASN
1	A	77	GLU
1	A	134	ASN
1	A	249	LYS
1	A	285	GLU
1	A	306	LEU
1	A	308	LEU
1	B	57	ASN
1	B	123	LYS
1	B	129	ILE
1	B	306	LEU
1	B	308	LEU

Sometimes sidechains can be flipped to improve hydrogen bonding and reduce clashes. All (10) such sidechains are listed below:

Mol	Chain	Res	Type
1	A	57	ASN
1	A	105	ASN
1	A	279	GLN
1	A	280	ASN
1	B	57	ASN
1	B	105	ASN
1	B	170	HIS
1	B	275	GLN
1	B	279	GLN
1	B	280	ASN

5.3.3 RNA [i](#)

There are no RNA molecules in this entry.

5.4 Non-standard residues in protein, DNA, RNA chains [i](#)

There are no non-standard protein/DNA/RNA residues in this entry.

5.5 Carbohydrates [i](#)

There are no oligosaccharides in this entry.

5.6 Ligand geometry [i](#)

6 ligands are modelled in this entry.

In the following table, the Counts columns list the number of bonds (or angles) for which Mogul statistics could be retrieved, the number of bonds (or angles) that are observed in the model and the number of bonds (or angles) that are defined in the Chemical Component Dictionary. The Link column lists molecule types, if any, to which the group is linked. The Z score for a bond length (or angle) is the number of standard deviations the observed value is removed from the expected value. A bond length (or angle) with $|Z| > 2$ is considered an outlier worth inspection. RMSZ is the root-mean-square of all Z scores of the bond lengths (or angles).

Mol	Type	Chain	Res	Link	Bond lengths			Bond angles		
					Counts	RMSZ	$\# Z > 2$	Counts	RMSZ	$\# Z > 2$
2	NAP	B	401	-	50,52,52	1.89	18 (36%)	71,80,80	3.44	20 (28%)
3	ASD	B	402	-	24,24,24	1.94	7 (29%)	39,39,39	2.71	17 (43%)
4	SO4	B	403	-	4,4,4	0.86	0	6,6,6	0.62	0
3	ASD	A	402	-	24,24,24	1.64	6 (25%)	39,39,39	2.18	13 (33%)

Mol	Type	Chain	Res	Link	Bond lengths			Bond angles		
					Counts	RMSZ	# Z > 2	Counts	RMSZ	# Z > 2
2	NAP	A	401	-	50,52,52	2.04	17 (34%)	71,80,80	3.65	21 (29%)
4	SO4	A	403	-	4,4,4	0.44	0	6,6,6	0.73	0

In the following table, the Chirals column lists the number of chiral outliers, the number of chiral centers analysed, the number of these observed in the model and the number defined in the Chemical Component Dictionary. Similar counts are reported in the Torsion and Rings columns. '-' means no outliers of that kind were identified.

Mol	Type	Chain	Res	Link	Chirals	Torsions	Rings
2	NAP	B	401	-	-	5/35/67/67	0/5/5/5
3	ASD	A	402	-	-	-	0/4/4/4
2	NAP	A	401	-	-	5/35/67/67	0/5/5/5
3	ASD	B	402	-	-	-	0/4/4/4

All (48) bond length outliers are listed below:

Mol	Chain	Res	Type	Atoms	Z	Observed(Å)	Ideal(Å)
3	B	402	ASD	C10-C9	-4.98	1.48	1.56
2	A	401	NAP	P2B-O3X	-4.60	1.37	1.54
2	A	401	NAP	C4A-N9A	-3.99	1.29	1.37
2	A	401	NAP	C5A-C4A	3.85	1.46	1.39
2	A	401	NAP	O5B-C5B	-3.84	1.30	1.44
2	B	401	NAP	P2B-O3X	-3.74	1.40	1.54
2	B	401	NAP	C5A-C4A	3.66	1.45	1.39
2	A	401	NAP	PN-O2N	-3.54	1.38	1.55
2	B	401	NAP	O7N-C7N	-3.51	1.17	1.24
2	A	401	NAP	PA-O2A	-3.48	1.39	1.55
3	A	402	ASD	C13-C14	-3.47	1.48	1.54
2	A	401	NAP	C8A-N9A	-3.46	1.31	1.37
2	A	401	NAP	C2N-N1N	-3.46	1.31	1.35
2	A	401	NAP	PN-O3	-3.44	1.55	1.59
3	B	402	ASD	C4-C5	-3.39	1.29	1.34
3	A	402	ASD	C10-C9	-3.22	1.50	1.56
2	B	401	NAP	O4B-C4B	-3.15	1.38	1.45
2	B	401	NAP	PN-O3	-3.04	1.56	1.59
2	A	401	NAP	O7N-C7N	-2.98	1.18	1.24
3	B	402	ASD	C13-C14	-2.93	1.49	1.54
2	B	401	NAP	PA-O1A	-2.93	1.40	1.50
2	B	401	NAP	C6N-C5N	2.87	1.44	1.38
2	B	401	NAP	PA-O2A	-2.83	1.42	1.55
2	A	401	NAP	O4B-C4B	-2.79	1.38	1.45
2	A	401	NAP	C5A-N7A	-2.76	1.34	1.39

Continued on next page...

Continued from previous page...

Mol	Chain	Res	Type	Atoms	Z	Observed(Å)	Ideal(Å)
2	B	401	NAP	C5A-C6A	2.75	1.48	1.41
2	B	401	NAP	C4A-N9A	-2.75	1.32	1.37
2	B	401	NAP	PN-O1N	-2.72	1.41	1.50
2	B	401	NAP	C5N-C4N	2.62	1.43	1.38
3	B	402	ASD	C19-C10	-2.48	1.50	1.54
3	A	402	ASD	C13-C17	-2.43	1.49	1.52
2	A	401	NAP	PA-O1A	-2.41	1.42	1.50
2	B	401	NAP	P2B-O2X	-2.35	1.46	1.54
2	B	401	NAP	PN-O2N	-2.33	1.44	1.55
2	B	401	NAP	C4N-C3N	-2.32	1.35	1.39
3	A	402	ASD	C7-C8	-2.30	1.49	1.53
3	B	402	ASD	C12-C13	-2.28	1.50	1.54
3	A	402	ASD	C10-C5	-2.26	1.48	1.52
2	B	401	NAP	C8A-N9A	-2.26	1.33	1.37
2	A	401	NAP	PN-O1N	-2.15	1.43	1.50
3	A	402	ASD	C1-C10	-2.15	1.50	1.54
3	B	402	ASD	C10-C5	-2.10	1.48	1.52
2	A	401	NAP	O3B-C3B	-2.08	1.37	1.43
2	B	401	NAP	P2B-O1X	-2.08	1.44	1.50
2	B	401	NAP	C5A-N7A	-2.08	1.35	1.39
3	B	402	ASD	C18-C13	-2.07	1.51	1.54
2	A	401	NAP	P2B-O1X	-2.03	1.44	1.50
2	A	401	NAP	C3B-C2B	2.03	1.57	1.53

All (71) bond angle outliers are listed below:

Mol	Chain	Res	Type	Atoms	Z	Observed(°)	Ideal(°)
2	A	401	NAP	C5N-C4N-C3N	-18.01	102.66	120.36
2	B	401	NAP	C5N-C4N-C3N	-16.51	104.14	120.36
2	A	401	NAP	C6N-N1N-C2N	-13.09	110.74	121.88
2	B	401	NAP	C6N-N1N-C2N	-13.07	110.76	121.88
2	A	401	NAP	C2N-C3N-C4N	9.59	129.41	118.26
2	A	401	NAP	O7N-C7N-C3N	-9.44	108.06	119.60
2	B	401	NAP	O7N-C7N-C3N	-8.01	109.81	119.60
2	B	401	NAP	C2N-C3N-C4N	7.65	127.16	118.26
2	B	401	NAP	C5A-C4A-N3A	-6.58	117.65	126.72
3	B	402	ASD	C5-C4-C3	-6.57	113.52	123.67
2	A	401	NAP	O7N-C7N-N7N	6.44	131.93	122.62
2	A	401	NAP	C5A-C4A-N3A	-5.62	118.97	126.72
2	B	401	NAP	N3A-C4A-N9A	5.48	136.49	127.17
3	B	402	ASD	C18-C13-C12	-5.35	104.99	111.10
2	B	401	NAP	C6N-C5N-C4N	5.30	127.09	119.45

Continued on next page...

Continued from previous page...

Mol	Chain	Res	Type	Atoms	Z	Observed(°)	Ideal(°)
3	B	402	ASD	C13-C14-C8	-5.15	107.71	113.13
2	B	401	NAP	O7N-C7N-N7N	5.08	129.96	122.62
3	A	402	ASD	C15-C16-C17	-4.79	101.07	105.70
3	B	402	ASD	C16-C17-C13	4.79	113.33	108.56
3	B	402	ASD	C9-C10-C5	-4.63	102.87	109.65
2	A	401	NAP	C6N-C5N-C4N	4.62	126.10	119.45
2	A	401	NAP	N3A-C4A-N9A	4.55	134.91	127.17
3	B	402	ASD	C11-C12-C13	-4.42	103.38	112.78
3	B	402	ASD	C18-C13-C17	4.34	113.19	105.18
3	A	402	ASD	C19-C10-C5	-4.28	101.84	108.38
3	B	402	ASD	C1-C10-C9	4.27	114.38	108.74
3	A	402	ASD	C19-C10-C1	4.19	115.80	109.43
2	B	401	NAP	C2A-N3A-C4A	4.12	121.89	111.83
2	A	401	NAP	C6N-N1N-C1D	4.11	127.79	119.73
2	A	401	NAP	C4D-O4D-C1D	4.01	113.60	109.92
3	A	402	ASD	C6-C7-C8	4.01	118.68	111.64
2	B	401	NAP	C6N-N1N-C1D	3.94	127.47	119.73
2	A	401	NAP	C5N-C6N-N1N	3.69	125.42	120.38
3	B	402	ASD	C15-C16-C17	-3.55	102.27	105.70
3	A	402	ASD	C16-C17-C13	3.45	111.99	108.56
3	A	402	ASD	C9-C8-C14	-3.34	104.72	109.09
2	A	401	NAP	C2A-N3A-C4A	3.29	119.86	111.83
3	B	402	ASD	O2-C17-C13	-3.18	121.81	125.98
2	A	401	NAP	C4A-C5A-N7A	-3.04	107.10	110.58
2	B	401	NAP	O5B-PA-O1A	-3.01	96.99	108.94
3	A	402	ASD	C11-C9-C8	3.01	115.98	111.78
3	B	402	ASD	C15-C14-C13	2.98	106.64	104.08
2	A	401	NAP	C2B-C3B-C4B	2.98	108.40	101.99
2	A	401	NAP	C4N-C3N-C7N	-2.96	112.99	121.06
2	B	401	NAP	C4N-C3N-C7N	-2.91	113.14	121.06
3	A	402	ASD	C9-C10-C5	-2.87	105.45	109.65
3	A	402	ASD	O1-C3-C4	-2.70	116.80	121.65
3	A	402	ASD	C7-C8-C9	-2.65	107.34	110.52
3	B	402	ASD	C11-C9-C8	2.58	115.38	111.78
3	A	402	ASD	C18-C13-C12	2.57	114.04	111.10
3	B	402	ASD	C12-C11-C9	-2.47	108.93	113.14
3	B	402	ASD	C2-C1-C10	2.47	117.71	113.42
2	B	401	NAP	O2N-PN-O1N	2.43	123.77	112.44
2	B	401	NAP	O2A-PA-O3	2.38	113.71	107.27
3	A	402	ASD	C7-C8-C14	-2.37	108.15	112.08
3	B	402	ASD	C6-C5-C10	2.35	120.91	116.76
2	B	401	NAP	C2B-C1B-N9A	2.35	117.61	113.75

Continued on next page...

Continued from previous page...

Mol	Chain	Res	Type	Atoms	Z	Observed(°)	Ideal(°)
3	A	402	ASD	C7-C6-C5	2.33	116.19	111.93
2	A	401	NAP	O3D-C3D-C4D	2.30	117.68	111.08
3	B	402	ASD	O1-C3-C2	2.23	126.02	121.59
2	A	401	NAP	O3-PA-O1A	2.22	117.39	110.70
2	B	401	NAP	O4D-C4D-C5D	2.22	116.45	109.33
2	B	401	NAP	C4D-O4D-C1D	2.22	111.95	109.92
2	B	401	NAP	C2D-C3D-C4D	-2.21	98.35	102.61
2	B	401	NAP	O4B-C1B-N9A	2.20	112.31	108.09
2	B	401	NAP	C4A-C5A-N7A	-2.17	108.10	110.58
2	A	401	NAP	C4A-N9A-C8A	2.08	107.93	105.74
2	A	401	NAP	O2A-PA-O1A	2.03	121.90	112.44
2	A	401	NAP	C2D-C3D-C4D	-2.03	98.69	102.61
2	A	401	NAP	N3A-C2A-N1A	-2.03	125.51	128.58
3	B	402	ASD	C10-C5-C4	-2.02	119.58	122.69

There are no chirality outliers.

All (10) torsion outliers are listed below:

Mol	Chain	Res	Type	Atoms
2	A	401	NAP	O4D-C1D-N1N-C6N
2	B	401	NAP	O4D-C1D-N1N-C6N
2	A	401	NAP	PA-O3-PN-O5D
2	B	401	NAP	PA-O3-PN-O5D
2	A	401	NAP	C4D-C5D-O5D-PN
2	B	401	NAP	C4D-C5D-O5D-PN
2	A	401	NAP	O4D-C1D-N1N-C2N
2	B	401	NAP	O4D-C1D-N1N-C2N
2	A	401	NAP	PA-O3-PN-O2N
2	B	401	NAP	PA-O3-PN-O2N

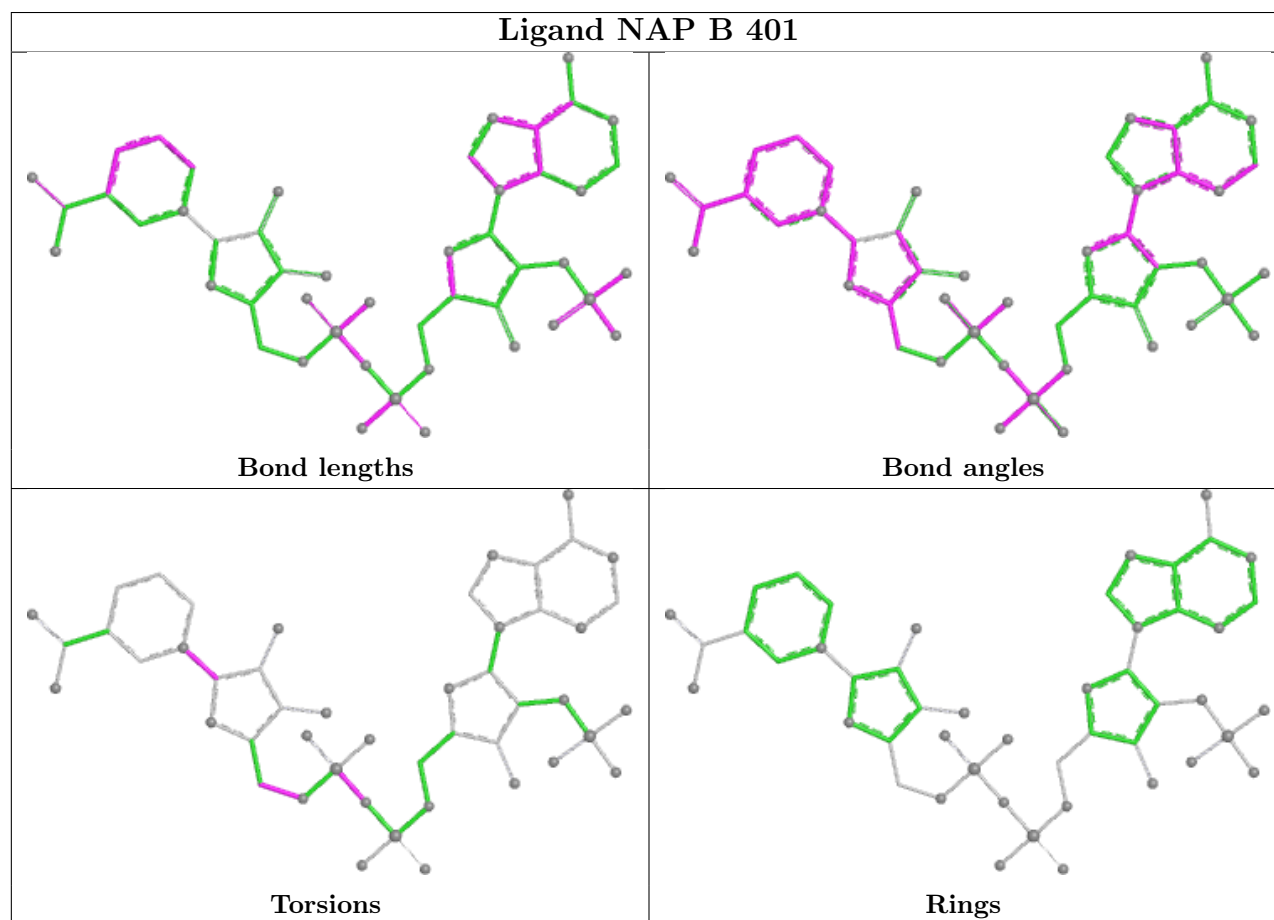
There are no ring outliers.

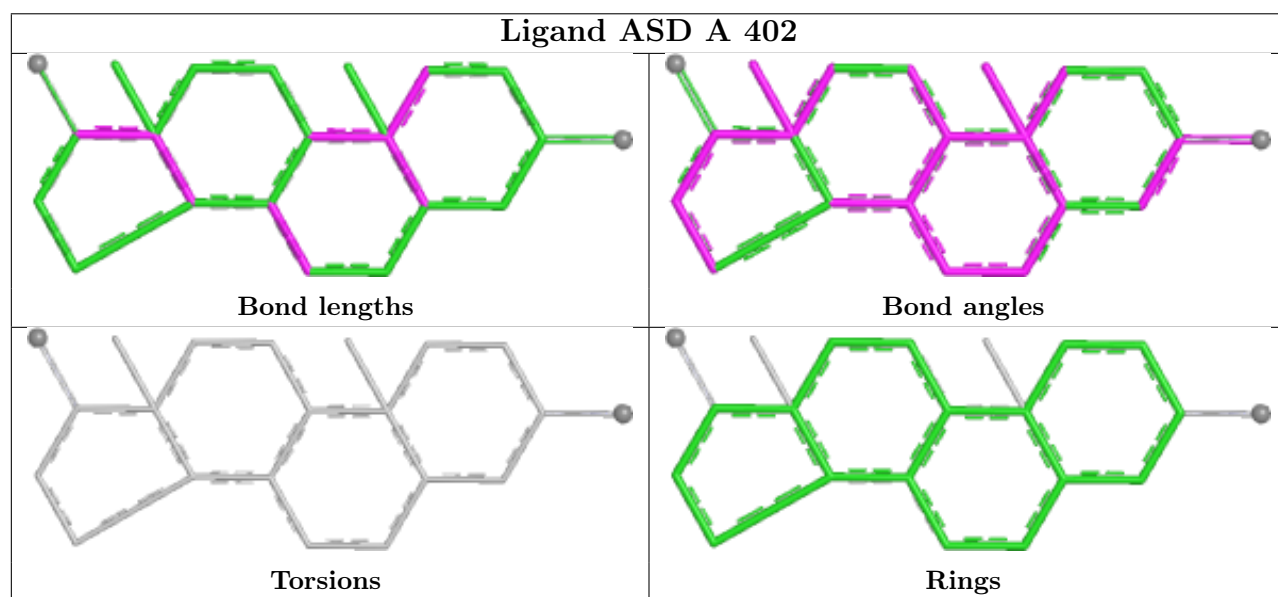
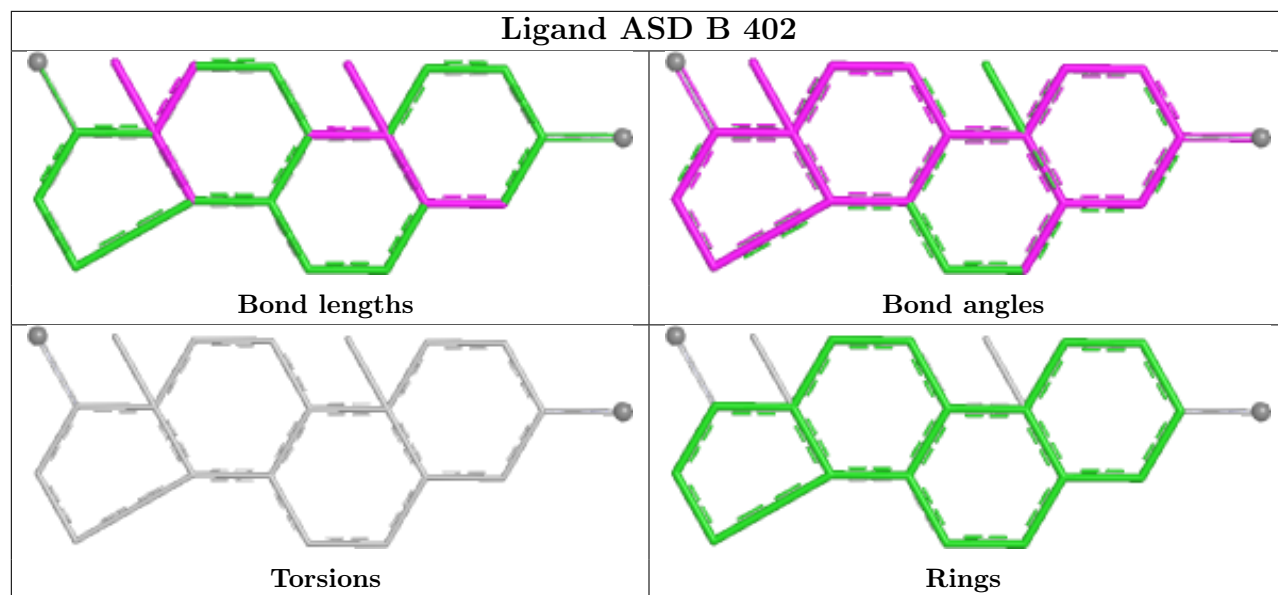
3 monomers are involved in 21 short contacts:

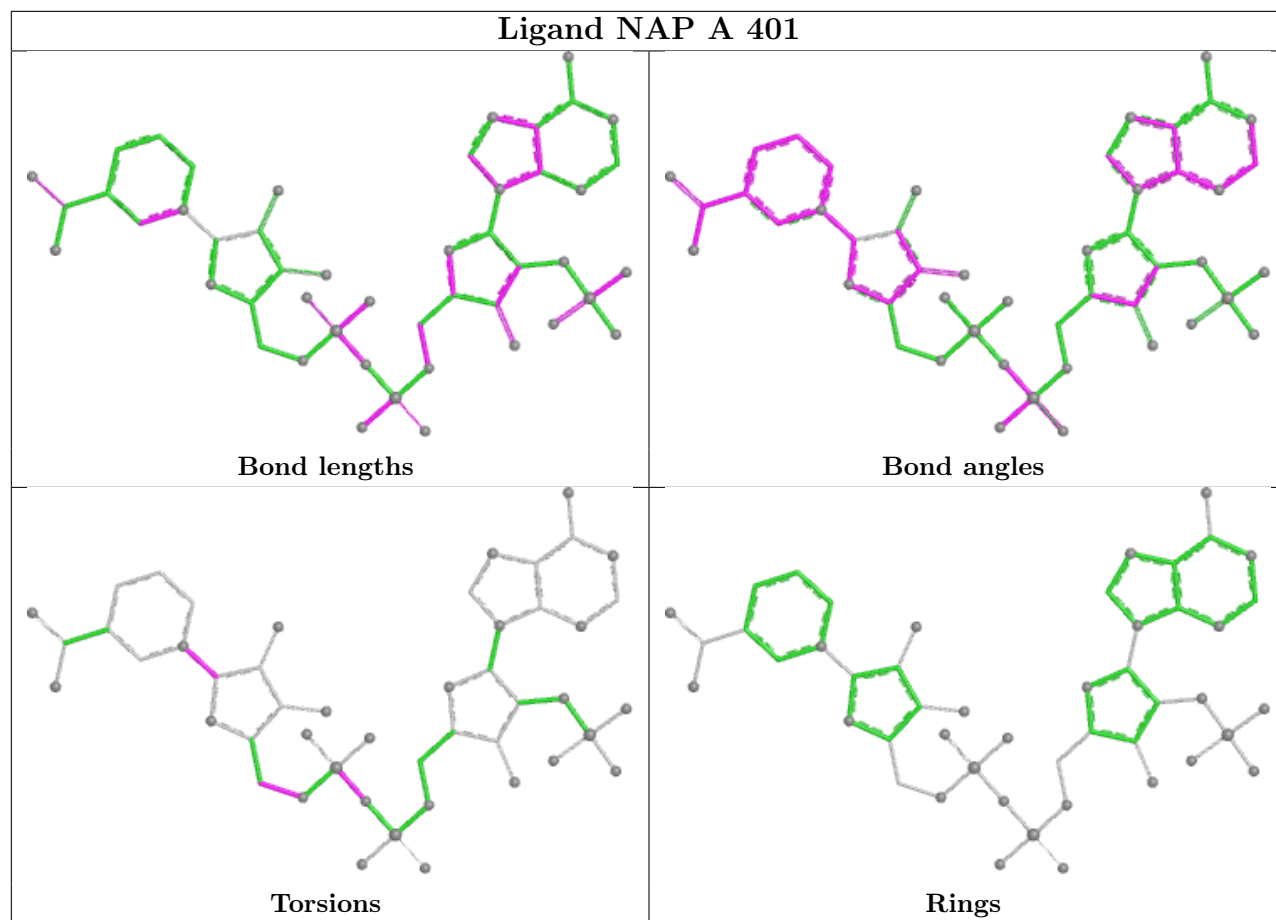
Mol	Chain	Res	Type	Clashes	Symm-Clashes
2	B	401	NAP	7	0
3	B	402	ASD	6	0
2	A	401	NAP	8	0

The following is a two-dimensional graphical depiction of Mogul quality analysis of bond lengths, bond angles, torsion angles, and ring geometry for all instances of the Ligand of Interest. In addition, ligands with molecular weight > 250 and outliers as shown on the validation Tables will

also be included. For torsion angles, if less than 5% of the Mogul distribution of torsion angles is within 10 degrees of the torsion angle in question, then that torsion angle is considered an outlier. Any bond that is central to one or more torsion angles identified as an outlier by Mogul will be highlighted in the graph. For rings, the root-mean-square deviation (RMSD) between the ring in question and similar rings identified by Mogul is calculated over all ring torsion angles. If the average RMSD is greater than 60 degrees and the minimal RMSD between the ring in question and any Mogul-identified rings is also greater than 60 degrees, then that ring is considered an outlier. The outliers are highlighted in purple. The color gray indicates Mogul did not find sufficient equivalents in the CSD to analyse the geometry.







5.7 Other polymers [i](#)

There are no such residues in this entry.

5.8 Polymer linkage issues [i](#)

There are no chain breaks in this entry.

6 Fit of model and data [i](#)

6.1 Protein, DNA and RNA chains [i](#)

In the following table, the column labelled ‘#RSRZ > 2’ contains the number (and percentage) of RSRZ outliers, followed by percent RSRZ outliers for the chain as percentile scores relative to all X-ray entries and entries of similar resolution. The OWAB column contains the minimum, median, 95th percentile and maximum values of the occupancy-weighted average B-factor per residue. The column labelled ‘Q < 0.9’ lists the number of (and percentage) of residues with an average occupancy less than 0.9.

Mol	Chain	Analysed	<RSRZ>	#RSRZ>2	OWAB(Å ²)	Q<0.9
1	A	322/323 (99%)	-0.49	4 (1%) 76 82	5, 10, 24, 66	1 (0%)
1	B	322/323 (99%)	-0.34	5 (1%) 70 77	7, 12, 25, 51	0
All	All	644/646 (99%)	-0.42	9 (1%) 73 80	5, 11, 25, 66	1 (0%)

All (9) RSRZ outliers are listed below:

Mol	Chain	Res	Type	RSRZ
1	A	3	SER	4.2
1	A	31	LYS	2.7
1	A	132	ASP	2.7
1	B	125	GLY	2.5
1	B	126	GLU	2.4
1	B	3	SER	2.3
1	B	129	ILE	2.2
1	A	4	LYS	2.1
1	B	134	ASN	2.1

6.2 Non-standard residues in protein, DNA, RNA chains [i](#)

There are no non-standard protein/DNA/RNA residues in this entry.

6.3 Carbohydrates [i](#)

There are no oligosaccharides in this entry.

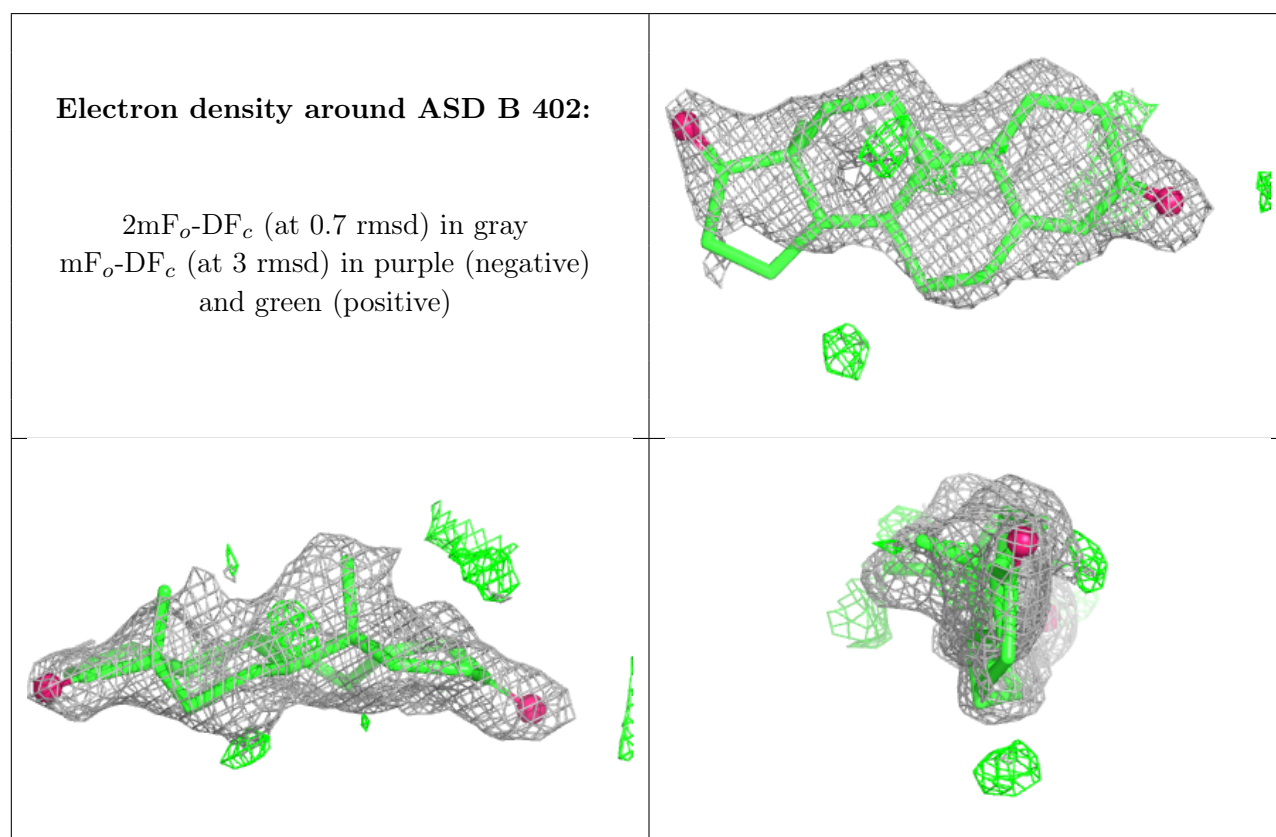
6.4 Ligands [i](#)

In the following table, the Atoms column lists the number of modelled atoms in the group and the number defined in the chemical component dictionary. The B-factors column lists the minimum,

median, 95th percentile and maximum values of B factors of atoms in the group. The column labelled 'Q< 0.9' lists the number of atoms with occupancy less than 0.9.

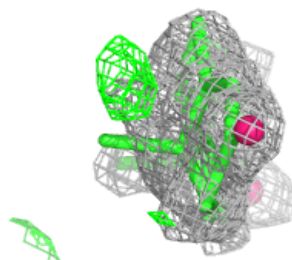
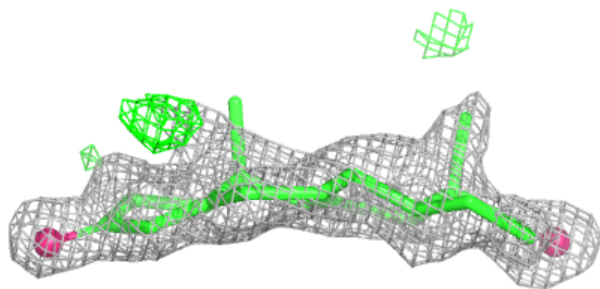
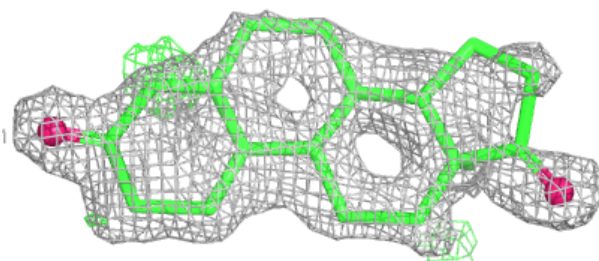
Mol	Type	Chain	Res	Atoms	RSCC	RSR	B-factors(Å ²)	Q<0.9
3	ASD	B	402	21/21	0.80	0.17	27,33,37,39	21
3	ASD	A	402	21/21	0.85	0.14	24,28,30,31	21
2	NAP	B	401	48/48	0.94	0.07	8,12,18,19	0
2	NAP	A	401	48/48	0.95	0.07	7,9,16,18	0
4	SO4	B	403	5/5	0.96	0.11	19,22,28,29	0
4	SO4	A	403	5/5	0.98	0.05	18,19,19,20	0

The following is a graphical depiction of the model fit to experimental electron density of all instances of the Ligand of Interest. In addition, ligands with molecular weight > 250 and outliers as shown on the geometry validation Tables will also be included. Each fit is shown from different orientation to approximate a three-dimensional view.

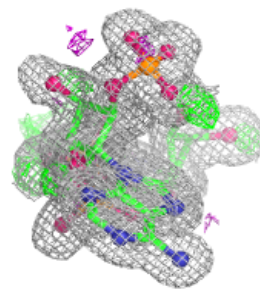
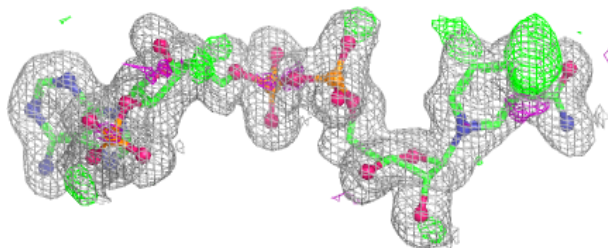
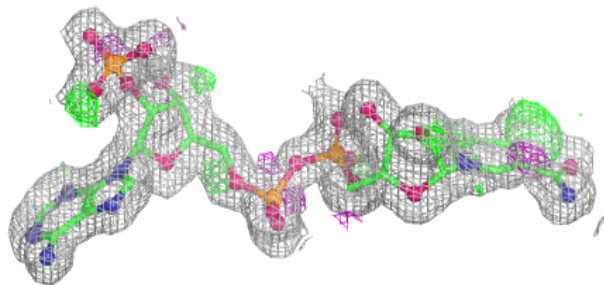


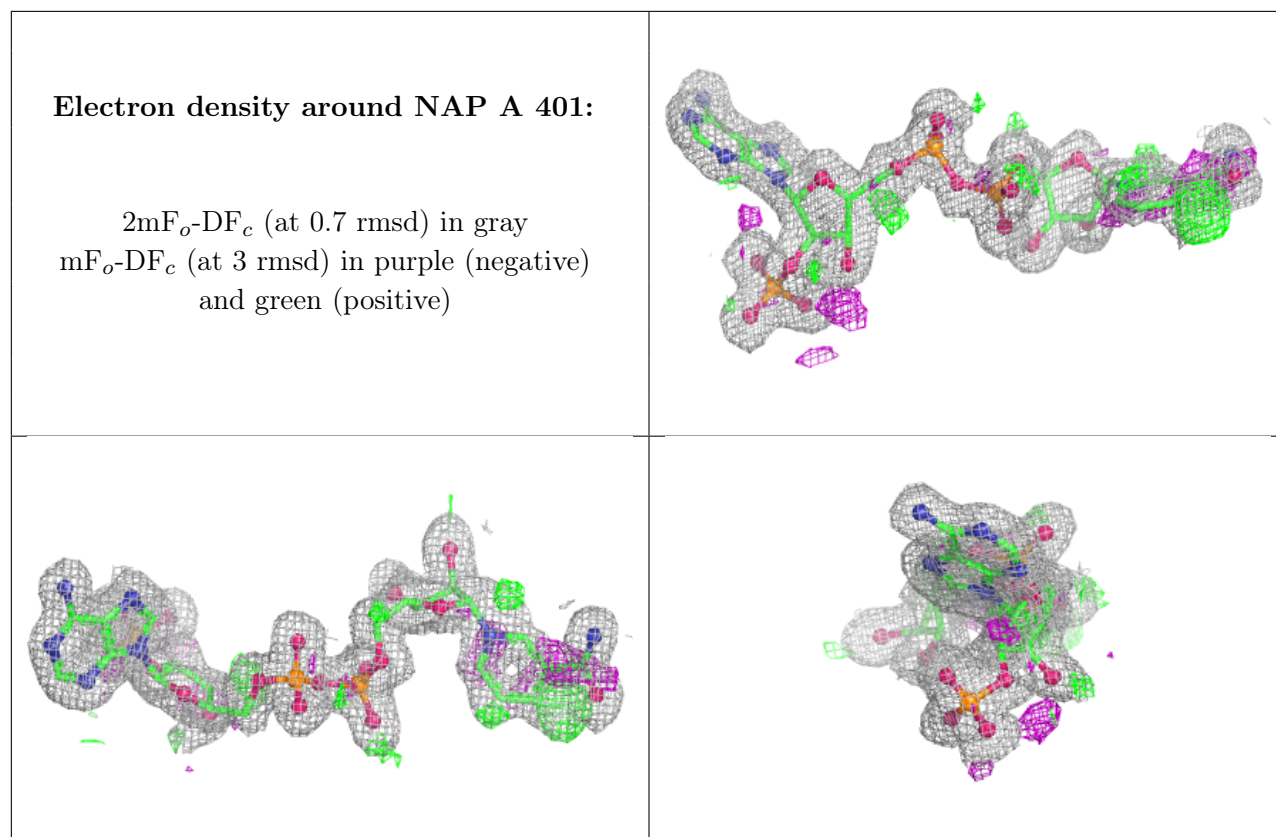
Electron density around ASD A 402:

$2mF_o-DF_c$ (at 0.7 rmsd) in gray
 mF_o-DF_c (at 3 rmsd) in purple (negative)
and green (positive)

**Electron density around NAP B 401:**

$2mF_o-DF_c$ (at 0.7 rmsd) in gray
 mF_o-DF_c (at 3 rmsd) in purple (negative)
and green (positive)





6.5 Other polymers [i](#)

There are no such residues in this entry.