



wwPDB EM Validation Summary Report ⓘ

Mar 8, 2026 – 10:25 AM UTC

PDB ID : 7VMQ / pdb_00007vmq
EMDB ID : EMD-33940
Title : Structure of recombinant RyR2 (Ca²⁺ dataset, class 3, open state)
Authors : Kobayashi, T.; Tsutsumi, A.; Kurebayashi, N.; Kodama, M.; Kikkawa, M.;
Murayama, T.; Ogawa, H.
Deposited on : 2021-10-09
Resolution : 3.70 Å(reported)

This is a wwPDB EM Validation Summary Report for a publicly released PDB entry.

We welcome your comments at validation@mail.wwpdb.org

A user guide is available at

<https://www.wwpdb.org/validation/2017/EMValidationReportHelp>
with specific help available everywhere you see the ⓘ symbol.

The types of validation reports are described at

<http://www.wwpdb.org/validation/2017/FAQs#types>.

The following versions of software and data (see [references ⓘ](#)) were used in the production of this report:

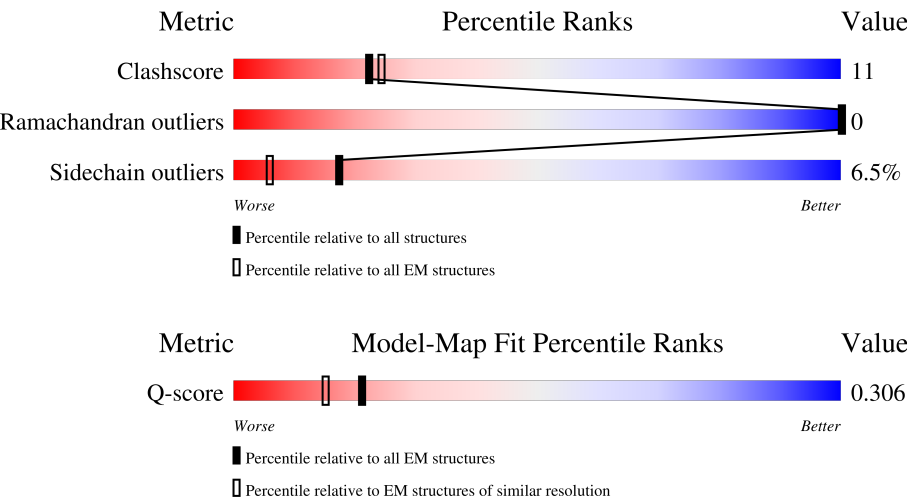
EMDB validation analysis : 0.0.1.dev132
MolProbity : 4-5-2 with Phenix2.0
Percentile statistics : 20250101.v01 (using entries in the PDB archive January 1st 2025)
EM percentile statistics : 202505.v01 (Using data in the EMDB archive up until May 2025)
MapQ : 1.9.13
Ideal geometry (proteins) : Engh & Huber (2001)
Ideal geometry (DNA, RNA) : Parkinson et al. (1996)
Validation Pipeline (wwPDB-VP) : 2.49

1 Overall quality at a glance i

The following experimental techniques were used to determine the structure:
ELECTRON MICROSCOPY

The reported resolution of this entry is 3.70 Å.

Percentile scores (ranging between 0-100) for global validation metrics of the entry are shown in the following graphic. The table shows the number of entries on which the scores are based.



Metric	Whole archive (#Entries)	EM structures (#Entries)	Similar EM resolution (#Entries, resolution range(Å))
Clashscore	229148	23984	-
Ramachandran outliers	224038	23583	-
Sidechain outliers	223484	23102	-
Q-score	-	25397	10474 (3.22 - 4.22)

The table below summarises the geometric issues observed across the polymeric chains and their fit to the map. The red, orange, yellow and green segments of the bar indicate the fraction of residues that contain outliers for ≥ 3 , 2, 1 and 0 types of geometric quality criteria respectively. A grey segment represents the fraction of residues that are not modelled. The numeric value for each fraction is indicated below the corresponding segment, with a dot representing fractions $\leq 5\%$. The upper red bar (where present) indicates the fraction of residues that have poor fit to the EM map (all-atom inclusion $< 40\%$). The numeric value is given above the bar.

Mol	Chain	Length	Quality of chain
1	A	4966	<div><div>29%</div><div>59%</div><div>19%</div><div>•</div><div>20%</div></div>
1	B	4966	<div><div>29%</div><div>59%</div><div>19%</div><div>•</div><div>20%</div></div>
1	C	4966	<div><div>29%</div><div>59%</div><div>19%</div><div>•</div><div>20%</div></div>
1	D	4966	<div><div>29%</div><div>60%</div><div>19%</div><div>•</div><div>20%</div></div>

Continued on next page...

Continued from previous page...

Mol	Chain	Length	Quality of chain
2	G	176	<div><div><div></div><div></div><div></div><div></div></div><div>9%44%16%•39%</div></div>
2	H	176	<div><div><div></div><div></div><div></div><div></div></div><div>10%43%17%•39%</div></div>
2	I	176	<div><div><div></div><div></div><div></div><div></div></div><div>9%46%15%39%</div></div>
2	J	176	<div><div><div></div><div></div><div></div><div></div></div><div>8%45%15%•39%</div></div>

2 Entry composition

There are 4 unique types of molecules in this entry. The entry contains 122036 atoms, of which 0 are hydrogens and 0 are deuteriums.

In the tables below, the AltConf column contains the number of residues with at least one atom in alternate conformation and the Trace column contains the number of residues modelled with at most 2 atoms.

- Molecule 1 is a protein called Ryanodine receptor 2.

Mol	Chain	Residues	Atoms					AltConf	Trace
1	A	3991	Total	C	N	O	S	0	0
			29688	18782	5180	5553	173		
1	B	3991	Total	C	N	O	S	0	0
			29688	18782	5180	5553	173		
1	C	3991	Total	C	N	O	S	0	0
			29688	18782	5180	5553	173		
1	D	3991	Total	C	N	O	S	0	0
			29688	18782	5180	5553	173		

- Molecule 2 is a protein called Peptidyl-prolyl cis-trans isomerase FKBP1B.

Mol	Chain	Residues	Atoms					AltConf	Trace
2	G	107	Total	C	N	O	S	0	0
			819	516	144	155	4		
2	H	107	Total	C	N	O	S	0	0
			819	516	144	155	4		
2	I	107	Total	C	N	O	S	0	0
			819	516	144	155	4		
2	J	107	Total	C	N	O	S	0	0
			819	516	144	155	4		

There are 276 discrepancies between the modelled and reference sequences:

Chain	Residue	Modelled	Actual	Comment	Reference
G	-67	MET	-	initiating methionine	UNP P68106
G	-66	GLY	-	expression tag	UNP P68106
G	-65	SER	-	expression tag	UNP P68106
G	-64	SER	-	expression tag	UNP P68106
G	-63	HIS	-	expression tag	UNP P68106
G	-62	HIS	-	expression tag	UNP P68106
G	-61	HIS	-	expression tag	UNP P68106
G	-60	HIS	-	expression tag	UNP P68106
G	-59	HIS	-	expression tag	UNP P68106

Continued on next page...

Continued from previous page...

Chain	Residue	Modelled	Actual	Comment	Reference
G	-58	HIS	-	expression tag	UNP P68106
G	-57	SER	-	expression tag	UNP P68106
G	-56	SER	-	expression tag	UNP P68106
G	-55	GLY	-	expression tag	UNP P68106
G	-54	LEU	-	expression tag	UNP P68106
G	-53	VAL	-	expression tag	UNP P68106
G	-52	PRO	-	expression tag	UNP P68106
G	-51	ARG	-	expression tag	UNP P68106
G	-50	GLY	-	expression tag	UNP P68106
G	-49	SER	-	expression tag	UNP P68106
G	-48	HIS	-	expression tag	UNP P68106
G	-47	MET	-	expression tag	UNP P68106
G	-46	ALA	-	expression tag	UNP P68106
G	-45	SER	-	expression tag	UNP P68106
G	-44	MET	-	expression tag	UNP P68106
G	-43	ASP	-	expression tag	UNP P68106
G	-42	GLU	-	expression tag	UNP P68106
G	-41	LYS	-	expression tag	UNP P68106
G	-40	THR	-	expression tag	UNP P68106
G	-39	THR	-	expression tag	UNP P68106
G	-38	GLY	-	expression tag	UNP P68106
G	-37	TRP	-	expression tag	UNP P68106
G	-36	ARG	-	expression tag	UNP P68106
G	-35	GLY	-	expression tag	UNP P68106
G	-34	GLY	-	expression tag	UNP P68106
G	-33	HIS	-	expression tag	UNP P68106
G	-32	VAL	-	expression tag	UNP P68106
G	-31	VAL	-	expression tag	UNP P68106
G	-30	GLU	-	expression tag	UNP P68106
G	-29	GLY	-	expression tag	UNP P68106
G	-28	LEU	-	expression tag	UNP P68106
G	-27	ALA	-	expression tag	UNP P68106
G	-26	GLY	-	expression tag	UNP P68106
G	-25	GLU	-	expression tag	UNP P68106
G	-24	LEU	-	expression tag	UNP P68106
G	-23	GLU	-	expression tag	UNP P68106
G	-22	GLN	-	expression tag	UNP P68106
G	-21	LEU	-	expression tag	UNP P68106
G	-20	ARG	-	expression tag	UNP P68106
G	-19	ALA	-	expression tag	UNP P68106
G	-18	ARG	-	expression tag	UNP P68106
G	-17	LEU	-	expression tag	UNP P68106

Continued on next page...

Continued from previous page...

Chain	Residue	Modelled	Actual	Comment	Reference
G	-16	GLU	-	expression tag	UNP P68106
G	-15	HIS	-	expression tag	UNP P68106
G	-14	HIS	-	expression tag	UNP P68106
G	-13	PRO	-	expression tag	UNP P68106
G	-12	GLN	-	expression tag	UNP P68106
G	-11	GLY	-	expression tag	UNP P68106
G	-10	GLN	-	expression tag	UNP P68106
G	-9	ARG	-	expression tag	UNP P68106
G	-8	GLU	-	expression tag	UNP P68106
G	-7	PRO	-	expression tag	UNP P68106
G	-6	GLY	-	expression tag	UNP P68106
G	-5	SER	-	expression tag	UNP P68106
G	-4	GLY	-	expression tag	UNP P68106
G	-3	GLY	-	expression tag	UNP P68106
G	-2	SER	-	expression tag	UNP P68106
G	-1	GLY	-	expression tag	UNP P68106
G	0	GLY	-	expression tag	UNP P68106
G	1	THR	-	expression tag	UNP P68106
H	-67	MET	-	initiating methionine	UNP P68106
H	-66	GLY	-	expression tag	UNP P68106
H	-65	SER	-	expression tag	UNP P68106
H	-64	SER	-	expression tag	UNP P68106
H	-63	HIS	-	expression tag	UNP P68106
H	-62	HIS	-	expression tag	UNP P68106
H	-61	HIS	-	expression tag	UNP P68106
H	-60	HIS	-	expression tag	UNP P68106
H	-59	HIS	-	expression tag	UNP P68106
H	-58	HIS	-	expression tag	UNP P68106
H	-57	SER	-	expression tag	UNP P68106
H	-56	SER	-	expression tag	UNP P68106
H	-55	GLY	-	expression tag	UNP P68106
H	-54	LEU	-	expression tag	UNP P68106
H	-53	VAL	-	expression tag	UNP P68106
H	-52	PRO	-	expression tag	UNP P68106
H	-51	ARG	-	expression tag	UNP P68106
H	-50	GLY	-	expression tag	UNP P68106
H	-49	SER	-	expression tag	UNP P68106
H	-48	HIS	-	expression tag	UNP P68106
H	-47	MET	-	expression tag	UNP P68106
H	-46	ALA	-	expression tag	UNP P68106
H	-45	SER	-	expression tag	UNP P68106
H	-44	MET	-	expression tag	UNP P68106

Continued on next page...

Continued from previous page...

Chain	Residue	Modelled	Actual	Comment	Reference
H	-43	ASP	-	expression tag	UNP P68106
H	-42	GLU	-	expression tag	UNP P68106
H	-41	LYS	-	expression tag	UNP P68106
H	-40	THR	-	expression tag	UNP P68106
H	-39	THR	-	expression tag	UNP P68106
H	-38	GLY	-	expression tag	UNP P68106
H	-37	TRP	-	expression tag	UNP P68106
H	-36	ARG	-	expression tag	UNP P68106
H	-35	GLY	-	expression tag	UNP P68106
H	-34	GLY	-	expression tag	UNP P68106
H	-33	HIS	-	expression tag	UNP P68106
H	-32	VAL	-	expression tag	UNP P68106
H	-31	VAL	-	expression tag	UNP P68106
H	-30	GLU	-	expression tag	UNP P68106
H	-29	GLY	-	expression tag	UNP P68106
H	-28	LEU	-	expression tag	UNP P68106
H	-27	ALA	-	expression tag	UNP P68106
H	-26	GLY	-	expression tag	UNP P68106
H	-25	GLU	-	expression tag	UNP P68106
H	-24	LEU	-	expression tag	UNP P68106
H	-23	GLU	-	expression tag	UNP P68106
H	-22	GLN	-	expression tag	UNP P68106
H	-21	LEU	-	expression tag	UNP P68106
H	-20	ARG	-	expression tag	UNP P68106
H	-19	ALA	-	expression tag	UNP P68106
H	-18	ARG	-	expression tag	UNP P68106
H	-17	LEU	-	expression tag	UNP P68106
H	-16	GLU	-	expression tag	UNP P68106
H	-15	HIS	-	expression tag	UNP P68106
H	-14	HIS	-	expression tag	UNP P68106
H	-13	PRO	-	expression tag	UNP P68106
H	-12	GLN	-	expression tag	UNP P68106
H	-11	GLY	-	expression tag	UNP P68106
H	-10	GLN	-	expression tag	UNP P68106
H	-9	ARG	-	expression tag	UNP P68106
H	-8	GLU	-	expression tag	UNP P68106
H	-7	PRO	-	expression tag	UNP P68106
H	-6	GLY	-	expression tag	UNP P68106
H	-5	SER	-	expression tag	UNP P68106
H	-4	GLY	-	expression tag	UNP P68106
H	-3	GLY	-	expression tag	UNP P68106
H	-2	SER	-	expression tag	UNP P68106

Continued on next page...

Continued from previous page...

Chain	Residue	Modelled	Actual	Comment	Reference
H	-1	GLY	-	expression tag	UNP P68106
H	0	GLY	-	expression tag	UNP P68106
H	1	THR	-	expression tag	UNP P68106
I	-67	MET	-	initiating methionine	UNP P68106
I	-66	GLY	-	expression tag	UNP P68106
I	-65	SER	-	expression tag	UNP P68106
I	-64	SER	-	expression tag	UNP P68106
I	-63	HIS	-	expression tag	UNP P68106
I	-62	HIS	-	expression tag	UNP P68106
I	-61	HIS	-	expression tag	UNP P68106
I	-60	HIS	-	expression tag	UNP P68106
I	-59	HIS	-	expression tag	UNP P68106
I	-58	HIS	-	expression tag	UNP P68106
I	-57	SER	-	expression tag	UNP P68106
I	-56	SER	-	expression tag	UNP P68106
I	-55	GLY	-	expression tag	UNP P68106
I	-54	LEU	-	expression tag	UNP P68106
I	-53	VAL	-	expression tag	UNP P68106
I	-52	PRO	-	expression tag	UNP P68106
I	-51	ARG	-	expression tag	UNP P68106
I	-50	GLY	-	expression tag	UNP P68106
I	-49	SER	-	expression tag	UNP P68106
I	-48	HIS	-	expression tag	UNP P68106
I	-47	MET	-	expression tag	UNP P68106
I	-46	ALA	-	expression tag	UNP P68106
I	-45	SER	-	expression tag	UNP P68106
I	-44	MET	-	expression tag	UNP P68106
I	-43	ASP	-	expression tag	UNP P68106
I	-42	GLU	-	expression tag	UNP P68106
I	-41	LYS	-	expression tag	UNP P68106
I	-40	THR	-	expression tag	UNP P68106
I	-39	THR	-	expression tag	UNP P68106
I	-38	GLY	-	expression tag	UNP P68106
I	-37	TRP	-	expression tag	UNP P68106
I	-36	ARG	-	expression tag	UNP P68106
I	-35	GLY	-	expression tag	UNP P68106
I	-34	GLY	-	expression tag	UNP P68106
I	-33	HIS	-	expression tag	UNP P68106
I	-32	VAL	-	expression tag	UNP P68106
I	-31	VAL	-	expression tag	UNP P68106
I	-30	GLU	-	expression tag	UNP P68106
I	-29	GLY	-	expression tag	UNP P68106

Continued on next page...

Continued from previous page...

Chain	Residue	Modelled	Actual	Comment	Reference
I	-28	LEU	-	expression tag	UNP P68106
I	-27	ALA	-	expression tag	UNP P68106
I	-26	GLY	-	expression tag	UNP P68106
I	-25	GLU	-	expression tag	UNP P68106
I	-24	LEU	-	expression tag	UNP P68106
I	-23	GLU	-	expression tag	UNP P68106
I	-22	GLN	-	expression tag	UNP P68106
I	-21	LEU	-	expression tag	UNP P68106
I	-20	ARG	-	expression tag	UNP P68106
I	-19	ALA	-	expression tag	UNP P68106
I	-18	ARG	-	expression tag	UNP P68106
I	-17	LEU	-	expression tag	UNP P68106
I	-16	GLU	-	expression tag	UNP P68106
I	-15	HIS	-	expression tag	UNP P68106
I	-14	HIS	-	expression tag	UNP P68106
I	-13	PRO	-	expression tag	UNP P68106
I	-12	GLN	-	expression tag	UNP P68106
I	-11	GLY	-	expression tag	UNP P68106
I	-10	GLN	-	expression tag	UNP P68106
I	-9	ARG	-	expression tag	UNP P68106
I	-8	GLU	-	expression tag	UNP P68106
I	-7	PRO	-	expression tag	UNP P68106
I	-6	GLY	-	expression tag	UNP P68106
I	-5	SER	-	expression tag	UNP P68106
I	-4	GLY	-	expression tag	UNP P68106
I	-3	GLY	-	expression tag	UNP P68106
I	-2	SER	-	expression tag	UNP P68106
I	-1	GLY	-	expression tag	UNP P68106
I	0	GLY	-	expression tag	UNP P68106
I	1	THR	-	expression tag	UNP P68106
J	-67	MET	-	initiating methionine	UNP P68106
J	-66	GLY	-	expression tag	UNP P68106
J	-65	SER	-	expression tag	UNP P68106
J	-64	SER	-	expression tag	UNP P68106
J	-63	HIS	-	expression tag	UNP P68106
J	-62	HIS	-	expression tag	UNP P68106
J	-61	HIS	-	expression tag	UNP P68106
J	-60	HIS	-	expression tag	UNP P68106
J	-59	HIS	-	expression tag	UNP P68106
J	-58	HIS	-	expression tag	UNP P68106
J	-57	SER	-	expression tag	UNP P68106
J	-56	SER	-	expression tag	UNP P68106

Continued on next page...

Continued from previous page...

Chain	Residue	Modelled	Actual	Comment	Reference
J	-55	GLY	-	expression tag	UNP P68106
J	-54	LEU	-	expression tag	UNP P68106
J	-53	VAL	-	expression tag	UNP P68106
J	-52	PRO	-	expression tag	UNP P68106
J	-51	ARG	-	expression tag	UNP P68106
J	-50	GLY	-	expression tag	UNP P68106
J	-49	SER	-	expression tag	UNP P68106
J	-48	HIS	-	expression tag	UNP P68106
J	-47	MET	-	expression tag	UNP P68106
J	-46	ALA	-	expression tag	UNP P68106
J	-45	SER	-	expression tag	UNP P68106
J	-44	MET	-	expression tag	UNP P68106
J	-43	ASP	-	expression tag	UNP P68106
J	-42	GLU	-	expression tag	UNP P68106
J	-41	LYS	-	expression tag	UNP P68106
J	-40	THR	-	expression tag	UNP P68106
J	-39	THR	-	expression tag	UNP P68106
J	-38	GLY	-	expression tag	UNP P68106
J	-37	TRP	-	expression tag	UNP P68106
J	-36	ARG	-	expression tag	UNP P68106
J	-35	GLY	-	expression tag	UNP P68106
J	-34	GLY	-	expression tag	UNP P68106
J	-33	HIS	-	expression tag	UNP P68106
J	-32	VAL	-	expression tag	UNP P68106
J	-31	VAL	-	expression tag	UNP P68106
J	-30	GLU	-	expression tag	UNP P68106
J	-29	GLY	-	expression tag	UNP P68106
J	-28	LEU	-	expression tag	UNP P68106
J	-27	ALA	-	expression tag	UNP P68106
J	-26	GLY	-	expression tag	UNP P68106
J	-25	GLU	-	expression tag	UNP P68106
J	-24	LEU	-	expression tag	UNP P68106
J	-23	GLU	-	expression tag	UNP P68106
J	-22	GLN	-	expression tag	UNP P68106
J	-21	LEU	-	expression tag	UNP P68106
J	-20	ARG	-	expression tag	UNP P68106
J	-19	ALA	-	expression tag	UNP P68106
J	-18	ARG	-	expression tag	UNP P68106
J	-17	LEU	-	expression tag	UNP P68106
J	-16	GLU	-	expression tag	UNP P68106
J	-15	HIS	-	expression tag	UNP P68106
J	-14	HIS	-	expression tag	UNP P68106

Continued on next page...

Continued from previous page...

Chain	Residue	Modelled	Actual	Comment	Reference
J	-13	PRO	-	expression tag	UNP P68106
J	-12	GLN	-	expression tag	UNP P68106
J	-11	GLY	-	expression tag	UNP P68106
J	-10	GLN	-	expression tag	UNP P68106
J	-9	ARG	-	expression tag	UNP P68106
J	-8	GLU	-	expression tag	UNP P68106
J	-7	PRO	-	expression tag	UNP P68106
J	-6	GLY	-	expression tag	UNP P68106
J	-5	SER	-	expression tag	UNP P68106
J	-4	GLY	-	expression tag	UNP P68106
J	-3	GLY	-	expression tag	UNP P68106
J	-2	SER	-	expression tag	UNP P68106
J	-1	GLY	-	expression tag	UNP P68106
J	0	GLY	-	expression tag	UNP P68106
J	1	THR	-	expression tag	UNP P68106

- Molecule 3 is ZINC ION (CCD ID: ZN) (formula: Zn) (labeled as "Ligand of Interest" by depositor).

Mol	Chain	Residues	Atoms		AltConf
3	A	1	Total 1	Zn 1	0
3	B	1	Total 1	Zn 1	0
3	C	1	Total 1	Zn 1	0
3	D	1	Total 1	Zn 1	0

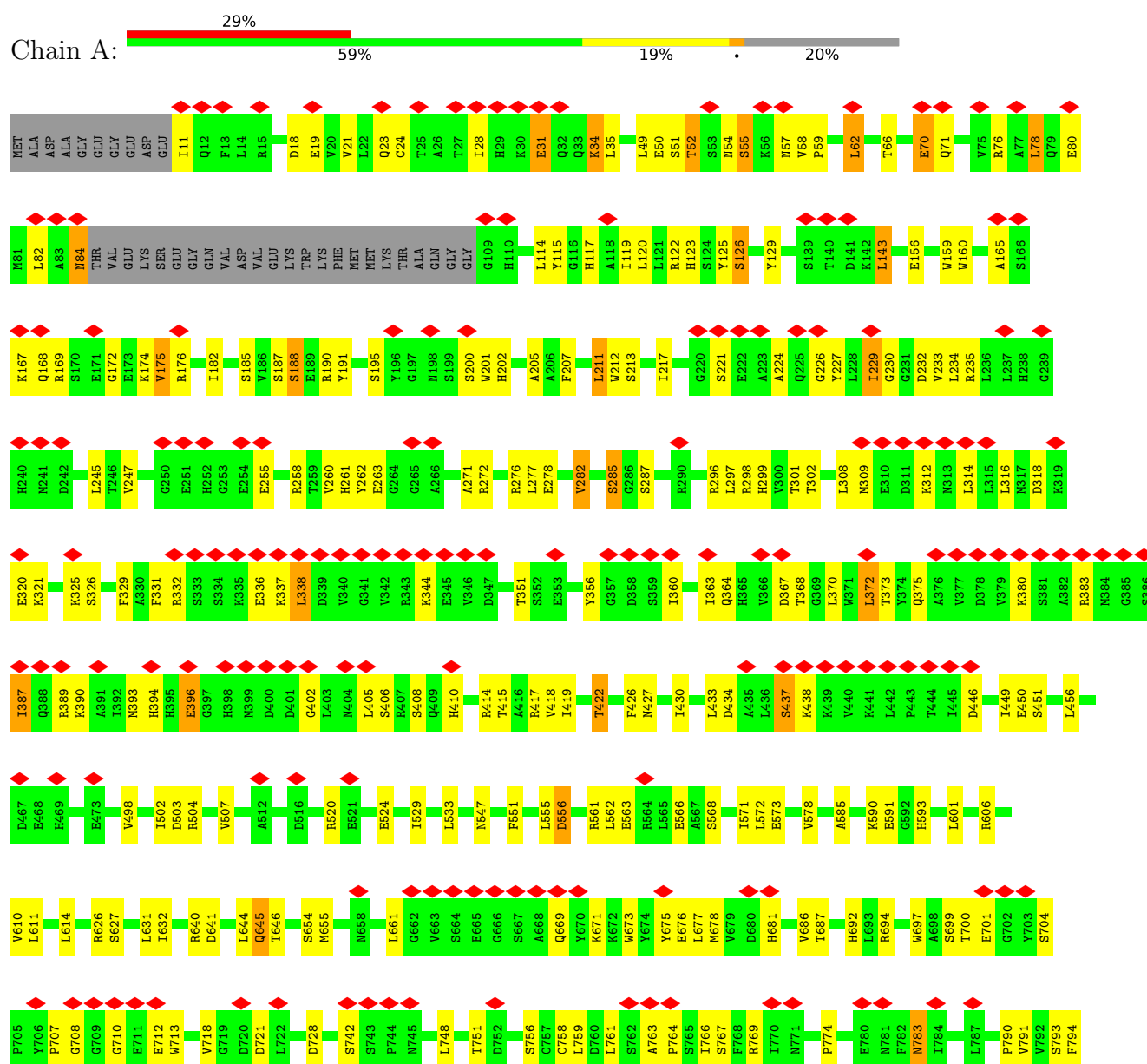
- Molecule 4 is CALCIUM ION (CCD ID: CA) (formula: Ca) (labeled as "Ligand of Interest" by depositor).

Mol	Chain	Residues	Atoms		AltConf
4	A	1	Total 1	Ca 1	0
4	B	1	Total 1	Ca 1	0
4	C	1	Total 1	Ca 1	0
4	D	1	Total 1	Ca 1	0

3 Residue-property plots

These plots are drawn for all protein, RNA, DNA and oligosaccharide chains in the entry. The first graphic for a chain summarises the proportions of the various outlier classes displayed in the second graphic. The second graphic shows the sequence view annotated by issues in geometry and atom inclusion in map density. Residues are color-coded according to the number of geometric quality criteria for which they contain at least one outlier: green = 0, yellow = 1, orange = 2 and red = 3 or more. A red diamond above a residue indicates a poor fit to the EM map for this residue (all-atom inclusion < 40%). Stretches of 2 or more consecutive residues without any outlier are shown as a green connector. Residues present in the sample, but not in the model, are shown in grey.

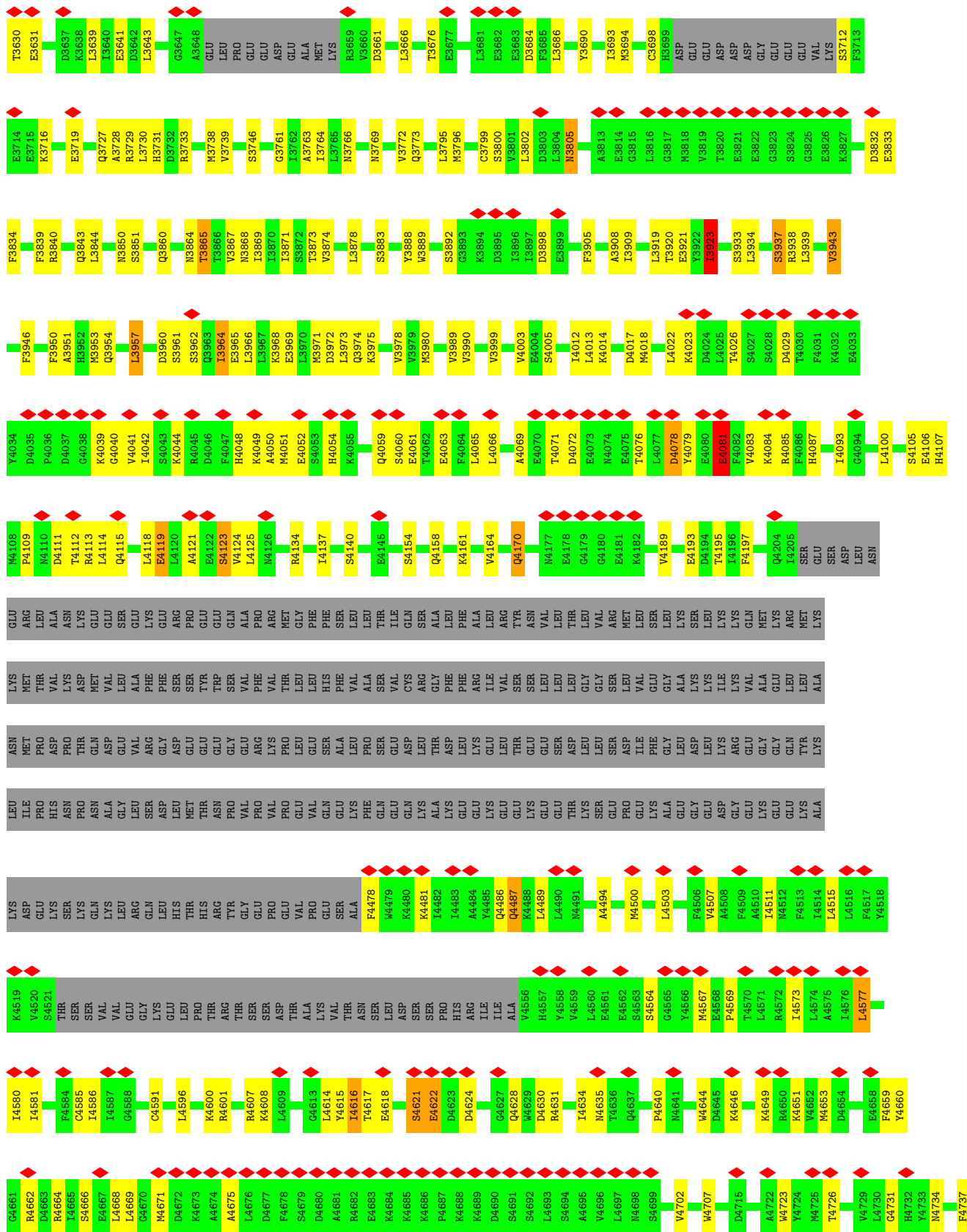
• Molecule 1: Ryanodine receptor 2

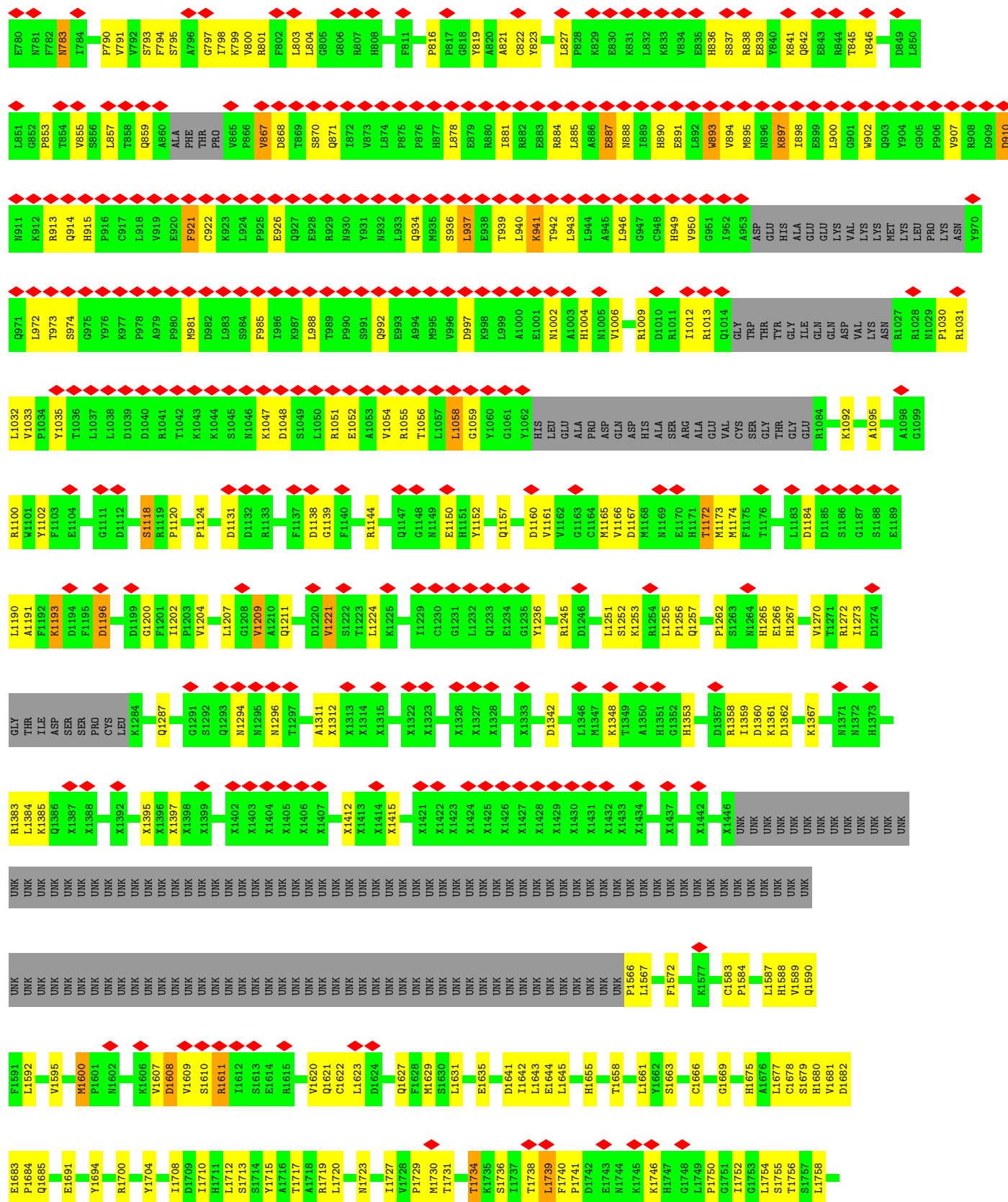








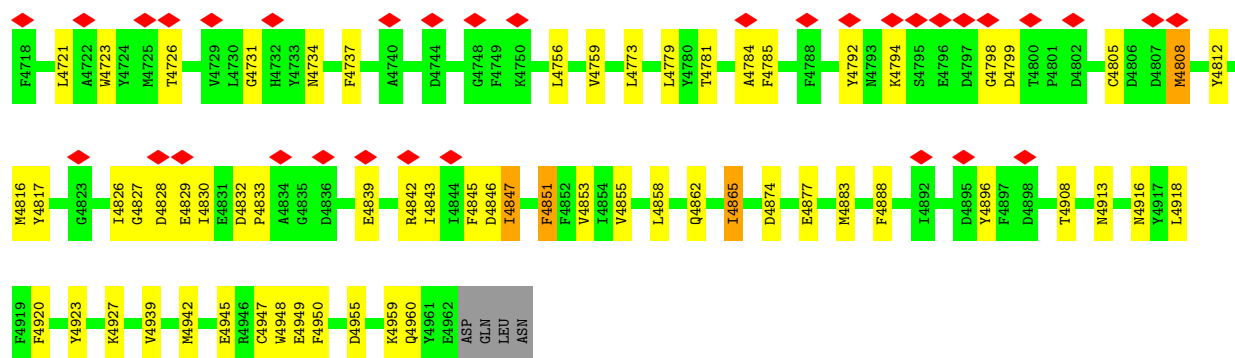




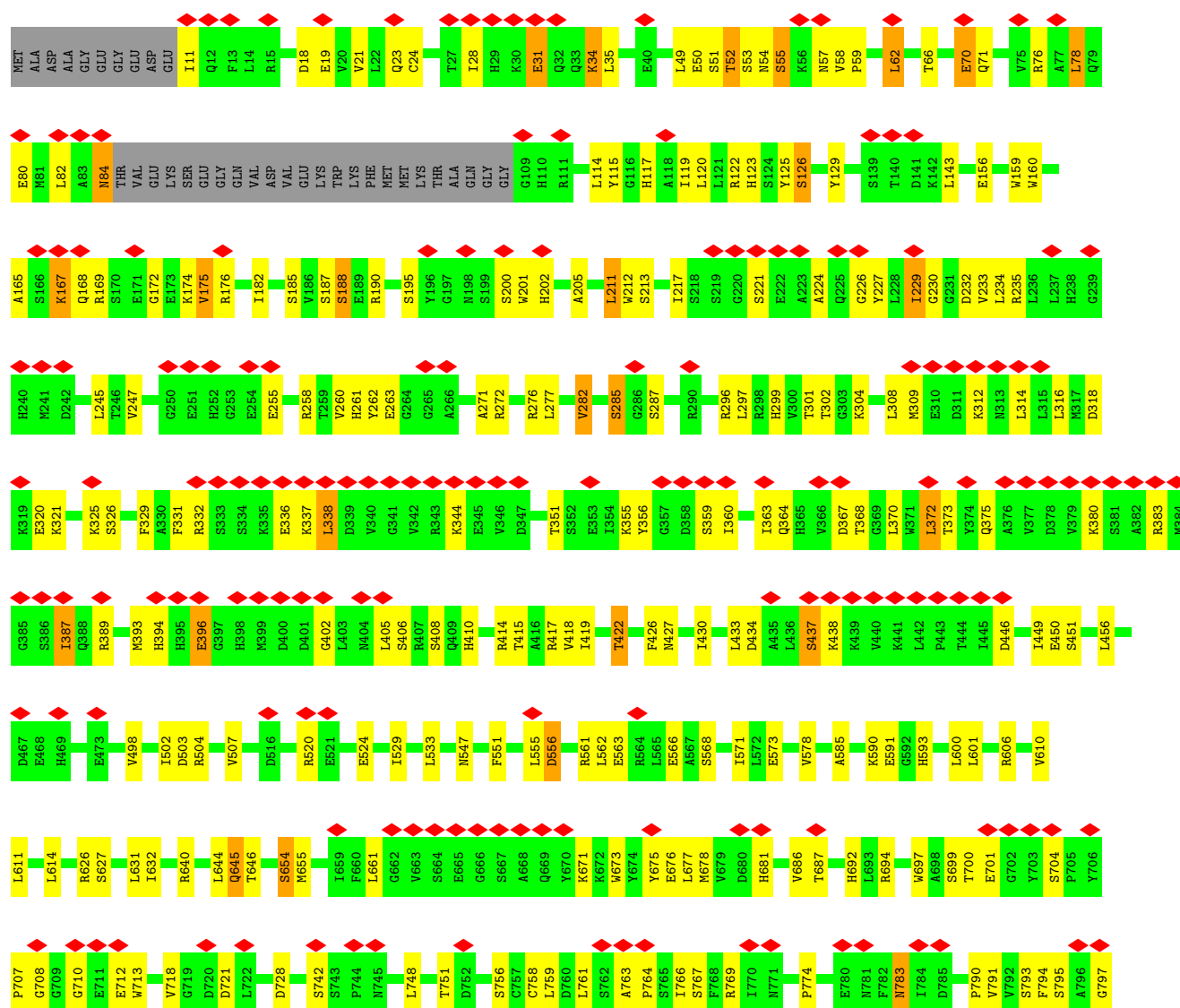


X3549	X3489	X3429	X3569	X3309	X3248	X3188	X3128	UNK	X3008	UNK	UNK	R2885	TLE
X3550	X3490	X3430	X3370	X3310	X3249	X3189	X3129	UNK	X3009	UNK	UNK	R2886	ASP
X3551	X3491	X3431	X3371	X3311	X3250	UNK	UNK	UNK	X3010	UNK	UNK	R2887	MET
X3552	X3492	X3432	X3372	X3312	X3251	X3191	UNK	UNK	X3011	UNK	UNK	A2888	SER
X3553	X3493	X3433	X3373	X3313	X3252	X3192	UNK	UNK	X3012	UNK	UNK	Q2889	ASN
X3554	X3494	X3434	X3374	X3314	X3253	X3193	UNK	UNK	X3013	UNK	UNK	D2890	THR
X3555	X3495	UNK	X3375	X3315	X3254	X3194	UNK	UNK	X3014	UNK	UNK	I2891	LEU
X3556	X3496	UNK	X3376	X3316	X3255	X3195	X3136	UNK	X3015	UNK	UNK	F2892	SER
X3557	X3497	UNK	X3377	X3317	X3256	X3196	X3137	UNK	X3016	UNK	UNK	F2893	ARG
X3558	X3498	UNK	X3378	X3318	X3257	X3197	X3138	UNK	X3017	UNK	UNK	F2894	D2835
X3559	X3499	UNK	X3379	X3319	X3258	X3198	X3139	UNK	X3018	UNK	UNK	L2895	L2836
X3560	X3500	UNK	X3380	X3320	X3259	X3199	X3140	UNK	X3019	UNK	UNK	Q2896	H2837
X3561	X3501	UNK	X3381	X3321	X3260	X3200	X3141	UNK	X3020	UNK	UNK	I2897	A2838
X3562	X3502	UNK	X3382	X3322	X3261	X3201	X3142	UNK	X3021	UNK	UNK	S2898	H2839
X3563	X3503	UNK	X3383	X3323	X3262	X3202	X3143	UNK	X3022	UNK	UNK	G2899	A2840
X3564	X3504	UNK	X3384	X3324	X3263	UNK	X3144	UNK	X3023	UNK	UNK	Y2900	F2841
X3565	X3505	UNK	X3385	X3325	X3264	UNK	X3145	UNK	X3024	UNK	UNK	V2901	H2842
X3566	X3506	UNK	X3386	X3326	X3265	UNK	X3146	UNK	X3025	UNK	UNK	Y2902	H2843
X3567	X3507	UNK	X3387	X3327	X3266	UNK	X3147	UNK	X3026	UNK	UNK	S2903	A2844
X3568	X3508	UNK	X3388	X3328	X3267	UNK	X3148	UNK	X3027	UNK	UNK	R2904	F2845
X3569	X3509	UNK	X3389	X3329	X3268	UNK	X3149	UNK	X3028	UNK	UNK	G2905	H2846
X3570	X3510	UNK	X3390	X3330	X3269	UNK	X3150	UNK	UNK	UNK	UNK	PHE	Y2847
X3571	X3511	UNK	X3391	X3331	X3270	UNK	X3151	UNK	UNK	UNK	UNK	LVS	H2848
X3572	X3512	UNK	X3392	X3332	X3271	UNK	X3152	UNK	UNK	UNK	UNK	ASP	H2849
X3573	X3513	UNK	X3393	X3333	X3272	UNK	X3153	UNK	UNK	UNK	UNK	LEU	I2850
X3574	X3514	UNK	X3394	X3334	X3273	UNK	X3154	UNK	UNK	UNK	UNK	ASP	H2851
X3575	X3515	UNK	X3395	X3335	X3274	UNK	X3155	UNK	UNK	UNK	UNK	LEU	A2852
X3576	X3516	UNK	X3396	X3336	X3275	UNK	X3156	UNK	UNK	UNK	UNK	ASP	K2853
X3577	X3517	UNK	X3397	X3337	X3276	UNK	X3157	UNK	UNK	UNK	UNK	THR	K2854
X3578	X3518	UNK	X3398	X3338	X3277	UNK	X3158	UNK	UNK	UNK	UNK	P80	K2855
X3579	X3519	UNK	X3399	X3339	X3278	UNK	X3159	UNK	UNK	UNK	UNK	SER	K2856
UNK	X3520	UNK	X3400	X3340	X3279	UNK	X3160	UNK	UNK	UNK	UNK	X2916	K2857
UNK	X3521	UNK	X3401	X3341	X3280	UNK	X3161	UNK	UNK	UNK	UNK	X2917	L2857
UNK	X3522	UNK	X3402	X3342	X3281	UNK	X3162	UNK	UNK	UNK	UNK	X2918	E2858
UNK	X3523	UNK	X3403	X3343	X3282	UNK	X3163	UNK	UNK	UNK	UNK	X2919	L2859
UNK	X3524	UNK	X3404	X3344	X3283	UNK	X3164	UNK	UNK	UNK	UNK	X2920	E2860
UNK	X3525	UNK	X3405	X3345	X3284	UNK	X3165	UNK	UNK	UNK	UNK	X2924	S2861
UNK	X3526	UNK	X3406	X3346	X3285	UNK	X3166	UNK	UNK	UNK	UNK	X2925	K2862
UNK	X3527	UNK	X3407	X3347	X3286	X3231	X3167	UNK	UNK	UNK	UNK	X2926	G2863
UNK	X3528	UNK	X3408	X3348	X3287	X3232	X3168	UNK	UNK	UNK	UNK	X2927	G2864
UNK	X3529	UNK	X3409	X3349	X3288	X3233	X3169	UNK	UNK	UNK	UNK	X2928	G2865
UNK	X3530	UNK	X3410	X3350	X3289	X3234	X3170	UNK	UNK	UNK	UNK	X2929	H2866
UNK	X3531	UNK	X3411	X3351	X3290	X3235	X3171	UNK	UNK	UNK	UNK	X2930	F2867
UNK	X3532	UNK	X3412	X3352	X3291	X3236	X3172	UNK	UNK	UNK	UNK	X2931	P2868
UNK	X3533	UNK	X3413	X3353	X3292	X3237	X3173	UNK	UNK	UNK	UNK	X2932	L2869
UNK	X3534	UNK	X3414	X3354	X3293	X3238	X3174	UNK	UNK	UNK	UNK	X2933	L2870
UNK	X3535	UNK	X3415	X3355	X3294	X3239	X3175	UNK	UNK	UNK	UNK	X2934	V2871
UNK	X3536	UNK	X3416	X3356	X3295	X3240	X3176	UNK	UNK	UNK	UNK	X2935	F2872
UNK	X3537	UNK	X3417	X3357	X3296	X3241	X3177	UNK	UNK	UNK	UNK	X2936	Y2873
UNK	X3538	UNK	X3418	X3358	X3297	X3242	X3178	UNK	UNK	UNK	UNK	X2937	D2874
UNK	X3539	UNK	X3419	X3359	X3298	X3243	X3179	UNK	UNK	UNK	UNK	X2938	L2875
UNK	X3540	UNK	X3420	X3360	X3299	X3244	X3180	UNK	UNK	UNK	UNK	X2939	L2876
UNK	X3541	UNK	X3421	X3361	X3300	X3245	X3181	UNK	UNK	UNK	UNK	X2940	T2877
UNK	X3542	UNK	X3422	X3362	X3301	X3246	X3182	UNK	UNK	UNK	UNK	X2941	A2878
UNK	X3543	UNK	X3423	X3363	X3302	X3247	X3183	UNK	UNK	UNK	UNK	X2942	K2879
UNK	X3544	UNK	X3424	X3364	X3303	UNK	X3184	UNK	UNK	UNK	UNK	UNK	E2880
UNK	X3545	UNK	X3425	X3365	X3304	UNK	X3185	UNK	UNK	UNK	UNK	UNK	K2881
UNK	X3546	UNK	X3426	X3366	X3305	UNK	X3186	UNK	UNK	UNK	UNK	UNK	A2882
UNK	X3547	UNK	X3427	X3367	X3306	UNK	X3187	UNK	UNK	UNK	UNK	UNK	K2883
UNK	X3548	UNK	X3428	X3368	X3307	UNK	UNK	UNK	UNK	UNK	UNK	UNK	P2884
UNK	UNK	UNK	UNK	UNK	X3308	UNK	UNK	UNK	UNK	UNK	UNK	UNK	UNK





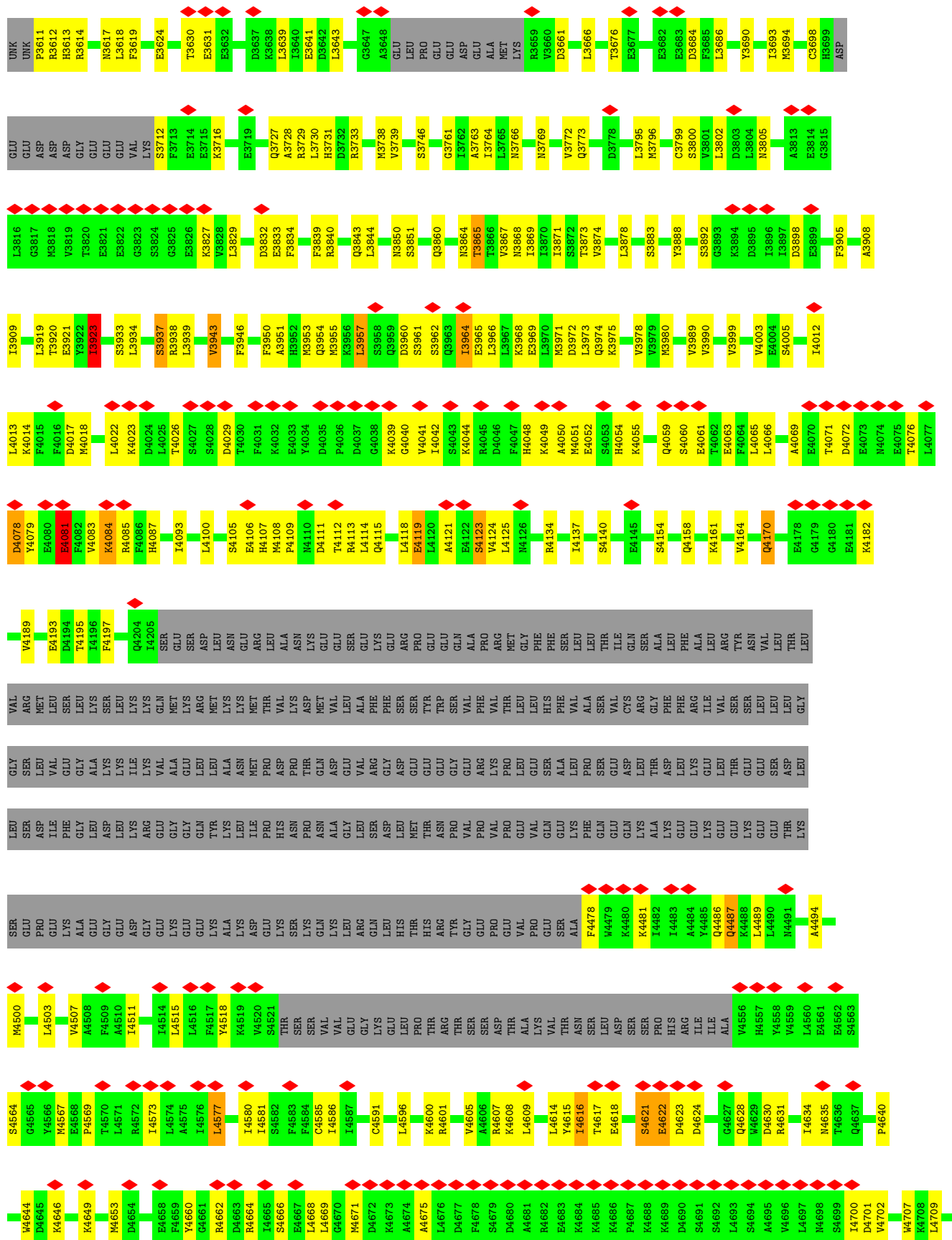
• Molecule 1: Ryanodine receptor 2

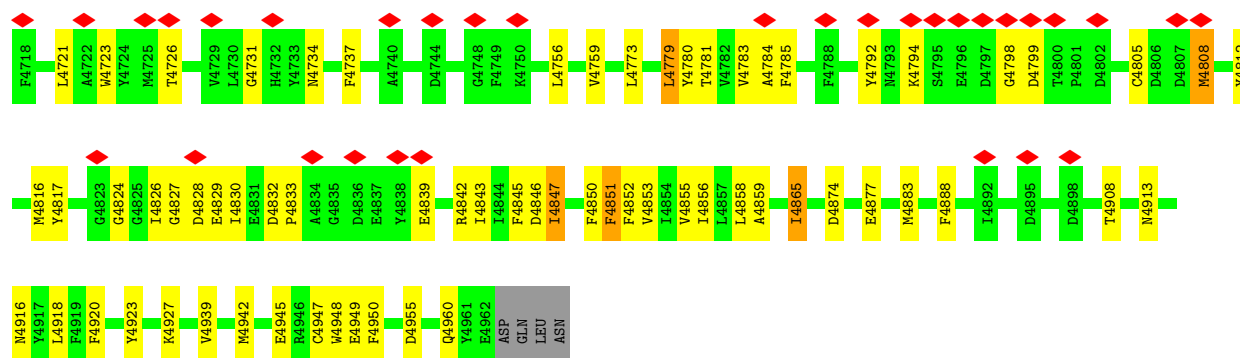




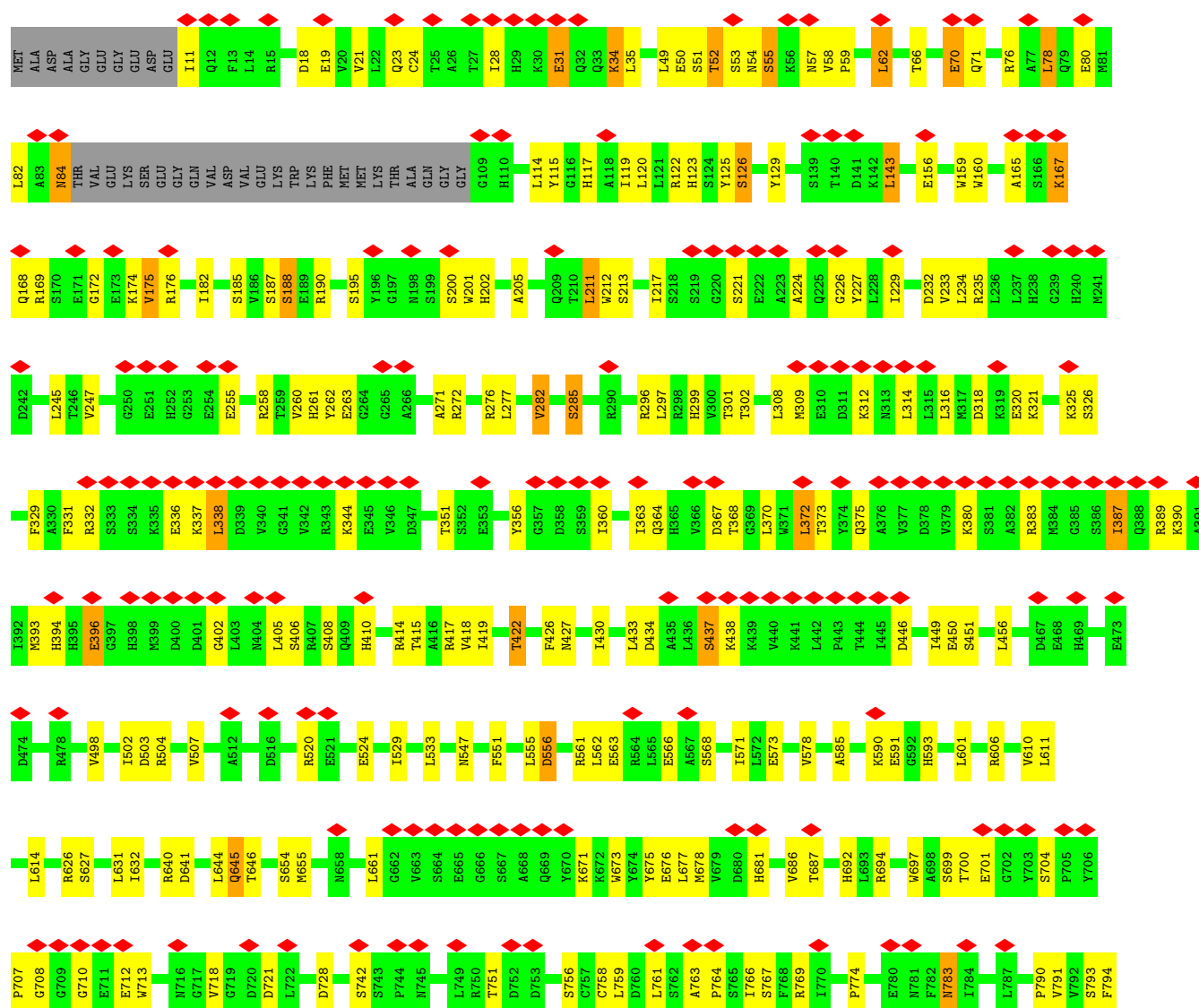








• Molecule 1: Ryanodine receptor 2

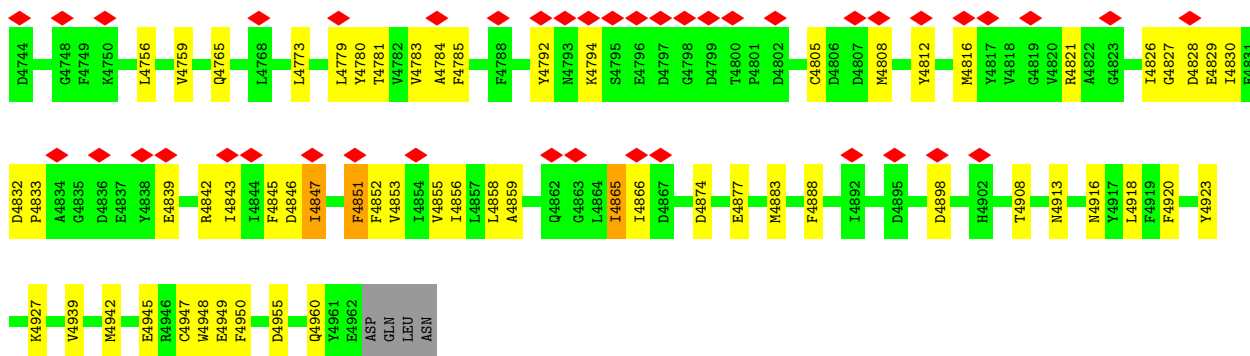


I1708	D1709	I1710	H1711	S1712	S1713	S1714	Y1715	A1716	E1717	L1718	R1719	L1720		N1723	I1727	V1728	P1729	M1730	I1731	E1732	E1733	T1734	K1735	S1736		I1737	T1738	L1739	F1740	P1741	D1742	E1743	K1745	L1746	H1747	G1748	L1749	P1750	G1751	I1752	G1753	L1754	S1755	T1756	S1757	L1758	M1762	R1763	F1764		S1773	N1774	D1775	C1776	Y1777																																																																																																																																																																																																																																																																																																																																																																																																																																																																																																																																																																																																																																																																																																																																																																																																																																																																											
K1606	V1607	D1608	V1609	S1610	R1611	I1612	S1613	E1614	R1615	V1620	Q1621	C1622	L1623	D1624	Q1627	F1628	M1629	S1630	L1631		E1635		D1641	I1642	L1643	E1644	L1645		H1655	T1658	L1661	Y1662	S1663	C1666		G1669	H1675	A1676	L1677	C1678	S1679	H1680	V1681	D1682	E1683	P1684	Q1685		E1691	R1700	Y1704																																																																																																																																																																																																																																																																																																																																																																																																																																																																																																																																																																																																																																																																																																																																																																																																																																																																															
UNK	UNK	UNK	UNK	UNK	UNK	UNK	UNK	UNK	UNK	UNK	UNK	UNK	UNK	UNK	UNK	UNK	UNK	UNK	UNK	UNK	UNK	UNK	UNK	UNK	UNK	UNK	UNK	UNK	UNK	UNK	UNK	UNK	UNK	UNK	UNK	UNK	UNK	UNK	UNK	UNK	UNK	UNK	UNK	UNK	UNK	UNK	UNK	UNK	UNK	UNK	UNK	UNK	UNK	UNK	UNK	UNK	UNK	UNK	UNK	UNK	UNK	UNK	UNK	UNK	UNK	UNK	UNK	UNK	UNK	UNK	UNK	UNK	UNK	UNK	UNK	UNK	UNK	UNK	UNK	UNK	UNK	UNK	UNK	UNK	UNK	UNK	UNK	UNK	UNK	UNK	UNK	UNK	UNK	UNK	UNK	UNK	UNK	UNK	UNK	UNK	UNK	UNK	UNK	UNK	UNK	UNK	UNK	UNK	UNK	UNK	UNK	UNK	UNK	UNK	UNK	UNK	UNK	UNK	UNK	UNK	UNK	UNK	UNK	UNK	UNK	UNK	UNK	UNK	UNK	UNK	UNK	UNK	UNK	UNK	UNK	UNK	UNK	UNK	UNK	UNK	UNK	UNK	UNK	UNK	UNK	UNK	UNK	UNK	UNK	UNK	UNK	UNK	UNK	UNK	UNK	UNK	UNK	UNK	UNK	UNK	UNK	UNK	UNK	UNK	UNK	UNK	UNK	UNK	UNK	UNK	UNK	UNK	UNK	UNK	UNK	UNK	UNK	UNK	UNK	UNK	UNK	UNK	UNK	UNK	UNK	UNK	UNK	UNK	UNK	UNK	UNK	UNK	UNK	UNK	UNK	UNK	UNK	UNK	UNK	UNK	UNK	UNK	UNK	UNK	UNK	UNK	UNK	UNK	UNK	UNK	UNK	UNK	UNK	UNK	UNK	UNK	UNK	UNK	UNK	UNK	UNK	UNK	UNK	UNK	UNK	UNK	UNK	UNK	UNK	UNK	UNK	UNK	UNK	UNK	UNK	UNK	UNK	UNK	UNK	UNK	UNK	UNK	UNK	UNK	UNK	UNK	UNK	UNK	UNK	UNK	UNK	UNK	UNK	UNK	UNK	UNK	UNK	UNK	UNK	UNK	UNK	UNK	UNK	UNK	UNK	UNK	UNK	UNK	UNK	UNK	UNK	UNK	UNK	UNK	UNK	UNK	UNK	UNK	UNK	UNK	UNK	UNK	UNK	UNK	UNK	UNK	UNK	UNK	UNK	UNK	UNK	UNK	UNK	UNK	UNK	UNK	UNK	UNK	UNK	UNK	UNK	UNK	UNK	UNK	UNK	UNK	UNK	UNK	UNK	UNK	UNK	UNK	UNK	UNK	UNK	UNK	UNK	UNK	UNK	UNK	UNK	UNK	UNK	UNK	UNK	UNK	UNK	UNK	UNK	UNK	UNK	UNK	UNK	UNK	UNK	UNK	UNK	UNK	UNK	UNK	UNK	UNK	UNK	UNK	UNK	UNK	UNK	UNK	UNK	UNK	UNK	UNK	UNK	UNK	UNK	UNK	UNK	UNK	UNK	UNK	UNK	UNK	UNK	UNK	UNK	UNK	UNK	UNK	UNK	UNK	UNK	UNK	UNK	UNK	UNK	UNK	UNK	UNK	UNK	UNK	UNK	UNK	UNK	UNK	UNK	UNK	UNK	UNK	UNK	UNK	UNK	UNK	UNK	UNK	UNK	UNK	UNK	UNK	UNK	UNK	UNK	UNK	UNK	UNK	UNK	UNK	UNK	UNK	UNK	UNK	UNK	UNK	UNK	UNK	UNK	UNK	UNK	UNK	UNK	UNK	UNK	UNK	UNK	UNK	UNK	UNK	UNK	UNK	UNK	UNK	UNK	UNK	UNK	UNK	UNK	UNK	UNK	UNK	UNK	UNK	UNK	UNK	UNK	UNK	UNK	UNK	UNK	UNK	UNK	UNK	UNK	UNK	UNK	UNK	UNK	UNK	UNK	UNK	UNK	UNK	UNK	UNK	UNK	UNK	UNK	UNK	UNK	UNK	UNK	UNK	UNK	UNK	UNK	UNK	UNK	UNK	UNK	UNK	UNK	UNK	UNK	UNK	UNK	UNK	UNK	UNK	UNK	UNK	UNK	UNK	UNK	UNK	UNK	UNK	UNK	UNK	UNK	UNK	UNK	UNK	UNK	UNK	UNK	UNK	UNK	UNK	UNK	UNK	UNK	UNK	UNK	UNK	UNK	UNK	UNK	UNK	UNK	UNK	UNK	UNK	UNK	UNK	UNK	UNK	UNK	UNK	UNK	UNK	UNK	UNK	UNK	UNK	UNK	UNK	UNK	UNK	UNK	UNK	UNK	UNK	UNK	UNK	UNK	UNK	UNK	UNK	UNK	UNK	UNK	UNK	UNK	UNK	UNK	UNK	UNK	UNK	UNK	UNK	UNK	UNK	UNK	UNK	UNK	UNK	UNK	UNK	UNK	UNK	UNK	UNK	UNK	UNK	UNK	UNK	UNK	UNK	UNK	UNK	UNK	UNK	UNK	UNK	UNK	UNK	UNK	UNK	UNK	UNK	UNK	UNK	UNK	UNK	UNK	UNK	UNK	UNK	UNK	UNK	UNK	UNK	UNK	UNK	UNK	UNK	UNK	UNK	UNK	UNK	UNK	UNK	UNK	UNK	UNK	UNK	UNK	UNK	UNK	UNK	UNK	UNK	UNK	UNK	UNK	UNK	UNK	UNK	UNK	UNK	UNK	UNK	UNK	UNK	UNK	UNK	UNK	UNK	UNK	UNK	UNK	UNK	UNK	UNK	UNK	UNK	UNK	UNK	UNK	UNK	UNK	UNK	UNK	UNK	UNK	UNK	UNK	UNK	UNK	UNK	UNK	UNK	UNK	UNK	UNK	UNK	UNK	UNK	UNK	UNK	UNK	UNK	UNK	UNK	UNK	UNK	UNK	UNK	UNK	UNK	UNK	UNK	UNK	UNK	UNK	UNK	UNK	UNK	UNK	UNK	UNK	UNK	UNK	UNK	UNK	UNK	UNK	UNK	UNK	UNK	UNK	UNK	UNK	UNK	UNK	UNK	UNK	UNK	UNK	UNK	UNK	UNK	UNK	UNK	UNK	UNK	UNK	UNK	UNK	UNK	UNK	UNK	UNK	UNK	UNK	UNK	UNK	UNK	UNK	UNK	UNK	UNK	UNK	UNK	UNK	UNK	UNK	UNK	UNK	UNK	UNK	UNK	UNK	UNK	UNK	UNK	UNK	UNK	UNK	UNK	UNK	UNK	UNK	UNK	UNK	UNK	UNK	UNK	UNK	UNK	UNK	UNK	UNK	UNK	UNK	UNK	UNK	UNK	UNK	UNK	UNK	UNK	UNK	UNK	UNK	UNK	UNK	UNK	UNK	UNK	UNK	UNK	UNK	UNK	UNK	UNK	UNK	UNK	UNK	UNK	UNK	UNK	UNK	UNK	UNK	UNK	UNK	UNK	UNK	UNK	UNK	UNK	UNK	UNK	UNK	UNK	UNK	UNK	UNK	UNK	UNK	UNK	UNK	UNK	UNK	UNK	UNK	UNK	UNK	UNK	UNK	UNK	UNK	UNK	UNK	UNK	UNK	UNK	UNK	UNK	UNK	UNK	UNK	UNK	UNK	UNK	UNK	UNK	UNK	UNK	UNK	UNK	UNK	UNK	UNK	UNK	UNK	UNK	UNK	UNK	UNK	UNK	UNK	UNK	UNK	UNK	UNK	UNK	UNK	UNK	UNK	UNK	UNK	UNK	UNK	UNK	UNK	UNK	UNK	UNK	UNK	UNK	UNK	UNK	UNK	UNK	UNK	UNK	UNK	UNK	UNK	UNK	UNK	UNK	UNK	UNK	UNK	UNK	UNK	UNK	UNK	UNK	UNK	UNK	UNK	UNK	UNK	UNK	UNK	UNK

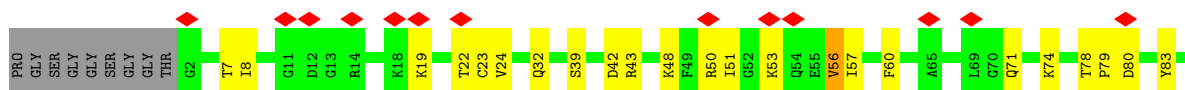
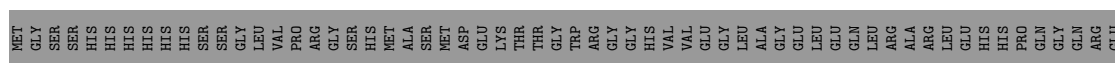
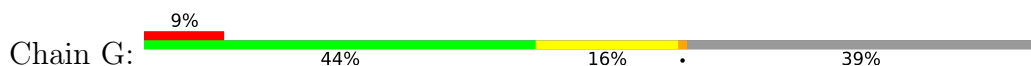




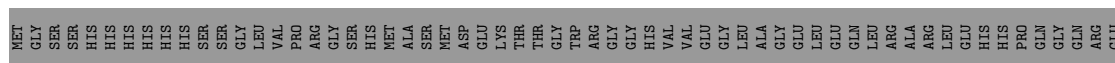




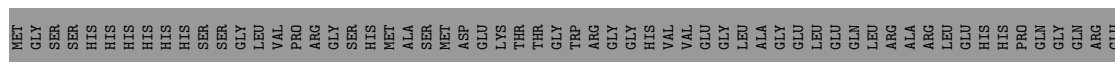
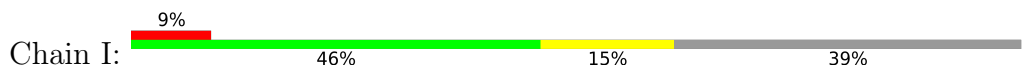
- Molecule 2: Peptidyl-prolyl cis-trans isomerase FKBP1B

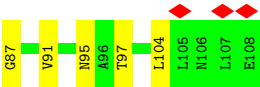


- Molecule 2: Peptidyl-prolyl cis-trans isomerase FKBP1B

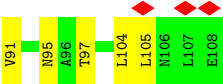
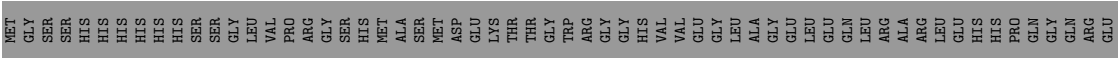
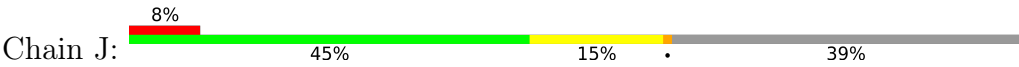


- Molecule 2: Peptidyl-prolyl cis-trans isomerase FKBP1B





• Molecule 2: Peptidyl-prolyl cis-trans isomerase FKBP1B



4 Experimental information

Property	Value	Source
EM reconstruction method	SINGLE PARTICLE	Depositor
Imposed symmetry	POINT, Not provided	
Number of particles used	40665	Depositor
Resolution determination method	FSC 0.143 CUT-OFF	Depositor
CTF correction method	PHASE FLIPPING AND AMPLITUDE CORRECTION	Depositor
Microscope	FEI TITAN KRIOS	Depositor
Voltage (kV)	300	Depositor
Electron dose ($e^-/\text{\AA}^2$)	60	Depositor
Minimum defocus (nm)	Not provided	
Maximum defocus (nm)	Not provided	
Magnification	Not provided	
Image detector	GATAN K3 (6k x 4k)	Depositor
Maximum map value	0.119	Depositor
Minimum map value	-0.084	Depositor
Average map value	-0.000	Depositor
Map value standard deviation	0.005	Depositor
Recommended contour level	0.021	Depositor
Map size (Å)	421.25998, 421.25998, 421.25998	wwPDB
Map dimensions	340, 340, 340	wwPDB
Map angles (°)	90.0, 90.0, 90.0	wwPDB
Pixel spacing (Å)	1.239, 1.239, 1.239	Depositor

5 Model quality [i](#)

5.1 Standard geometry [i](#)

Bond lengths and bond angles in the following residue types are not validated in this section: CA, ZN

The Z score for a bond length (or angle) is the number of standard deviations the observed value is removed from the expected value. A bond length (or angle) with $|Z| > 5$ is considered an outlier worth inspection. RMSZ is the root-mean-square of all Z scores of the bond lengths (or angles).

Mol	Chain	Bond lengths		Bond angles	
		RMSZ	$\# Z > 5$	RMSZ	$\# Z > 5$
1	A	0.16	0/26573	0.39	4/35881 (0.0%)
1	B	0.16	0/26573	0.39	4/35881 (0.0%)
1	C	0.16	0/26573	0.39	4/35881 (0.0%)
1	D	0.16	0/26573	0.39	4/35881 (0.0%)
2	G	0.13	0/835	0.38	0/1123
2	H	0.13	0/835	0.38	0/1123
2	I	0.12	0/835	0.38	0/1123
2	J	0.13	0/835	0.38	0/1123
All	All	0.15	0/109632	0.39	16/148016 (0.0%)

There are no bond length outliers.

The worst 5 of 16 bond angle outliers are listed below:

Mol	Chain	Res	Type	Atoms	Z	Observed(°)	Ideal(°)
1	B	2776	GLU	CA-CB-CG	6.63	127.36	114.10
1	A	2776	GLU	CA-CB-CG	6.62	127.34	114.10
1	C	2776	GLU	CA-CB-CG	6.61	127.31	114.10
1	D	2776	GLU	CA-CB-CG	6.60	127.31	114.10
1	B	4081	GLU	CA-CB-CG	6.58	127.27	114.10

There are no chirality outliers.

There are no planarity outliers.

5.2 Too-close contacts [i](#)

In the following table, the Non-H and H(model) columns list the number of non-hydrogen atoms and hydrogen atoms in the chain respectively. The H(added) column lists the number of hydrogen atoms added and optimized by MolProbity. The Clashes column lists the number of clashes within the asymmetric unit, whereas Symm-Clashes lists symmetry-related clashes.

Mol	Chain	Non-H	H(model)	H(added)	Clashes	Symm-Clashes
1	A	29688	0	26384	657	0
1	B	29688	0	26384	662	0
1	C	29688	0	26384	666	0
1	D	29688	0	26384	649	0
2	G	819	0	821	19	0
2	H	819	0	821	22	0
2	I	819	0	821	19	0
2	J	819	0	821	17	0
3	A	1	0	0	0	0
3	B	1	0	0	0	0
3	C	1	0	0	0	0
3	D	1	0	0	0	0
4	A	1	0	0	0	0
4	B	1	0	0	0	0
4	C	1	0	0	0	0
4	D	1	0	0	0	0
All	All	122036	0	108820	2625	0

The all-atom clashscore is defined as the number of clashes found per 1000 atoms (including hydrogen atoms). The all-atom clashscore for this structure is 11.

The worst 5 of 2625 close contacts within the same asymmetric unit are listed below, sorted by their clash magnitude.

Atom-1	Atom-2	Interatomic distance (Å)	Clash overlap (Å)
1:B:1629:MET:SD	1:B:1685:GLN:NE2	2.43	0.92
1:D:1629:MET:SD	1:D:1685:GLN:NE2	2.43	0.91
1:B:4003:VAL:HG11	1:B:4113:ARG:HD2	1.53	0.90
1:A:1629:MET:SD	1:A:1685:GLN:NE2	2.43	0.90
1:A:4003:VAL:HG11	1:A:4113:ARG:HD2	1.53	0.89

There are no symmetry-related clashes.

5.3 Torsion angles [i](#)

5.3.1 Protein backbone [i](#)

In the following table, the Percentiles column shows the percent Ramachandran outliers of the chain as a percentile score with respect to all PDB entries followed by that with respect to all EM entries.

The Analysed column shows the number of residues for which the backbone conformation was analysed, and the total number of residues.

Mol	Chain	Analysed	Favoured	Allowed	Outliers	Percentiles	
1	A	3218/4966 (65%)	2997 (93%)	221 (7%)	0	100	100
1	B	3218/4966 (65%)	2996 (93%)	222 (7%)	0	100	100
1	C	3218/4966 (65%)	2996 (93%)	222 (7%)	0	100	100
1	D	3218/4966 (65%)	2996 (93%)	222 (7%)	0	100	100
2	G	105/176 (60%)	99 (94%)	6 (6%)	0	100	100
2	H	105/176 (60%)	99 (94%)	6 (6%)	0	100	100
2	I	105/176 (60%)	99 (94%)	6 (6%)	0	100	100
2	J	105/176 (60%)	99 (94%)	6 (6%)	0	100	100
All	All	13292/20568 (65%)	12381 (93%)	911 (7%)	0	100	100

There are no Ramachandran outliers to report.

5.3.2 Protein sidechains ⓘ

In the following table, the Percentiles column shows the percent sidechain outliers of the chain as a percentile score with respect to all PDB entries followed by that with respect to all EM entries.

The Analysed column shows the number of residues for which the sidechain conformation was analysed, and the total number of residues.

Mol	Chain	Analysed	Rotameric	Outliers	Percentiles	
1	A	2827/3387 (84%)	2638 (93%)	189 (7%)	15	42
1	B	2827/3387 (84%)	2638 (93%)	189 (7%)	15	42
1	C	2827/3387 (84%)	2639 (93%)	188 (7%)	15	42
1	D	2827/3387 (84%)	2638 (93%)	189 (7%)	15	42
2	G	88/140 (63%)	86 (98%)	2 (2%)	44	62
2	H	88/140 (63%)	86 (98%)	2 (2%)	44	62
2	I	88/140 (63%)	86 (98%)	2 (2%)	44	62
2	J	88/140 (63%)	86 (98%)	2 (2%)	44	62
All	All	11660/14108 (83%)	10897 (94%)	763 (6%)	17	43

5 of 763 residues with a non-rotameric sidechain are listed below:

Mol	Chain	Res	Type
1	C	1221	VAL
1	D	31	GLU

Continued on next page...

Continued from previous page...

Mol	Chain	Res	Type
1	C	1966	SER
1	C	1209	VAL
1	C	3676	THR

Sometimes sidechains can be flipped to improve hydrogen bonding and reduce clashes. 5 of 257 such sidechains are listed below:

Mol	Chain	Res	Type
1	D	2277	GLN
1	D	2896	GLN
1	B	1806	HIS
1	B	1675	HIS
1	D	3860	GLN

5.3.3 RNA [i](#)

There are no RNA molecules in this entry.

5.4 Non-standard residues in protein, DNA, RNA chains [i](#)

There are no non-standard protein/DNA/RNA residues in this entry.

5.5 Carbohydrates [i](#)

There are no oligosaccharides in this entry.

5.6 Ligand geometry [i](#)

Of 8 ligands modelled in this entry, 8 are monoatomic - leaving 0 for Mogul analysis.

There are no bond length outliers.

There are no bond angle outliers.

There are no chirality outliers.

There are no torsion outliers.

There are no ring outliers.

No monomer is involved in short contacts.

5.7 Other polymers [i](#)

There are no such residues in this entry.

5.8 Polymer linkage issues [i](#)

There are no chain breaks in this entry.

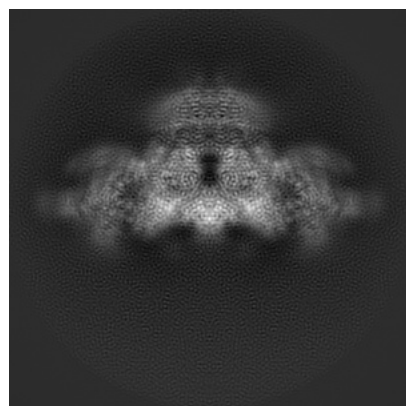
6 Map visualisation [i](#)

This section contains visualisations of the EMDB entry EMD-33940. These allow visual inspection of the internal detail of the map and identification of artifacts.

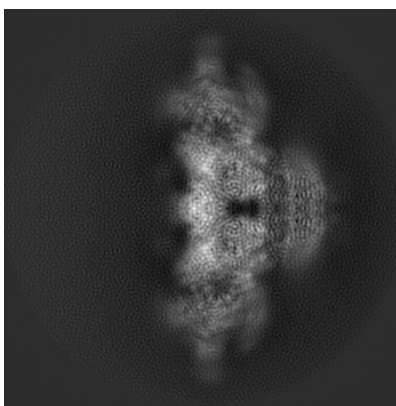
Images derived from a raw map, generated by summing the deposited half-maps, are presented below the corresponding image components of the primary map to allow further visual inspection and comparison with those of the primary map.

6.1 Orthogonal projections [i](#)

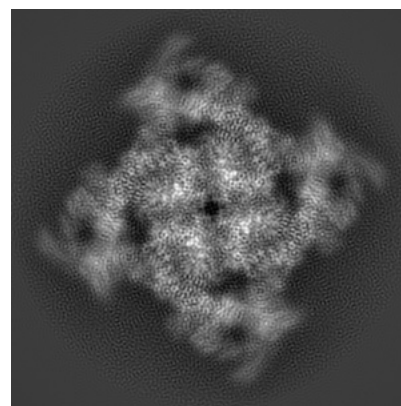
6.1.1 Primary map



X

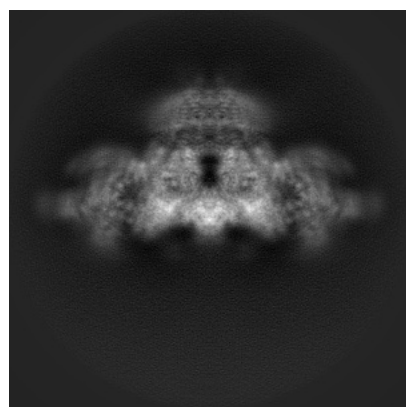


Y

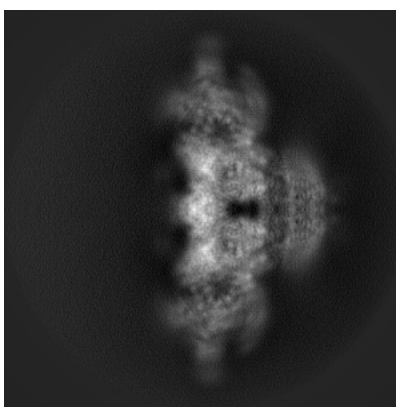


Z

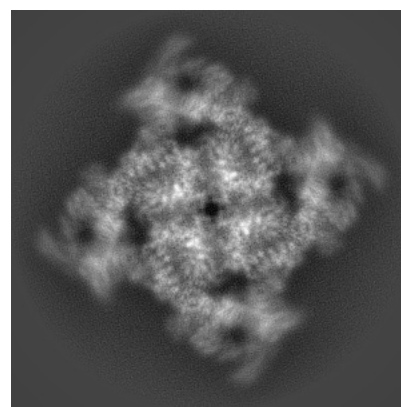
6.1.2 Raw map



X



Y

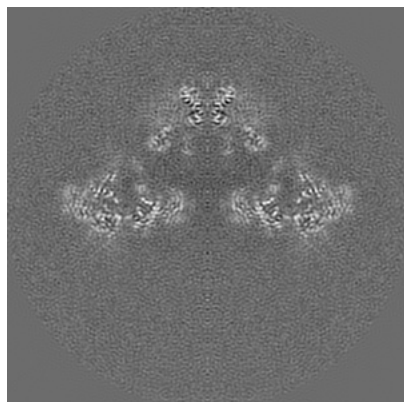


Z

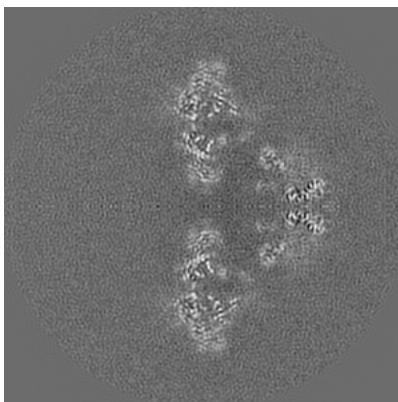
The images above show the map projected in three orthogonal directions.

6.2 Central slices [i](#)

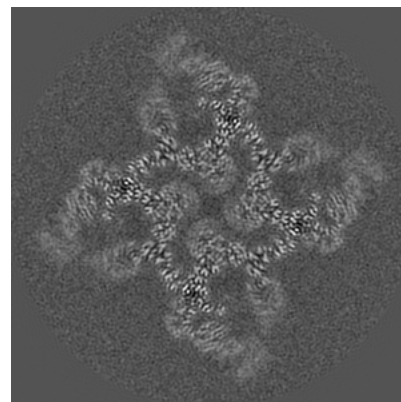
6.2.1 Primary map



X Index: 170

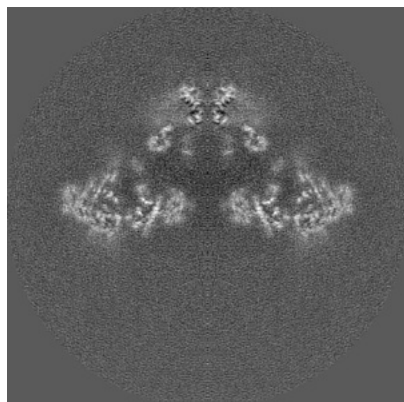


Y Index: 170

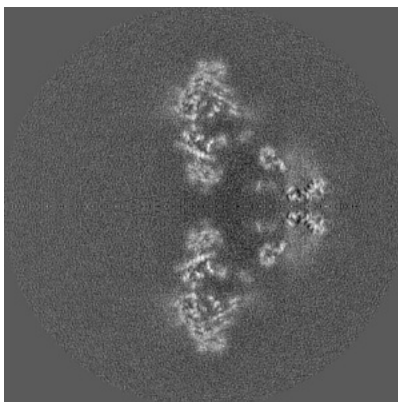


Z Index: 170

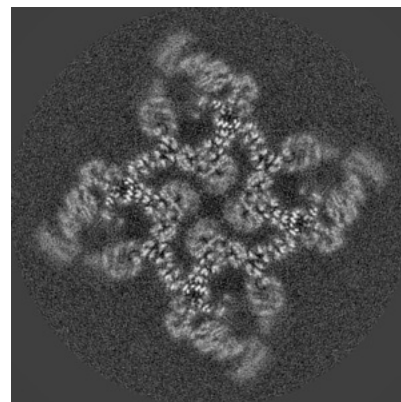
6.2.2 Raw map



X Index: 170



Y Index: 170

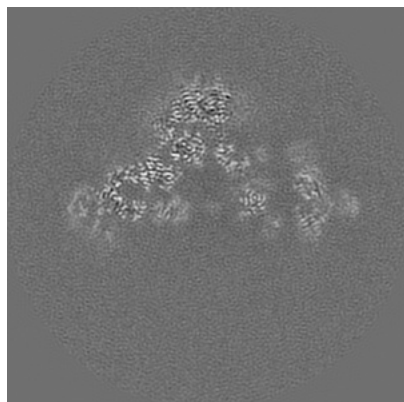


Z Index: 170

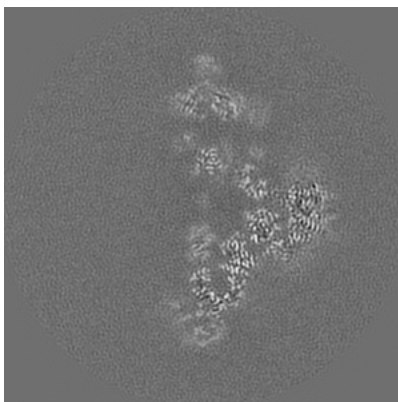
The images above show central slices of the map in three orthogonal directions.

6.3 Largest variance slices [i](#)

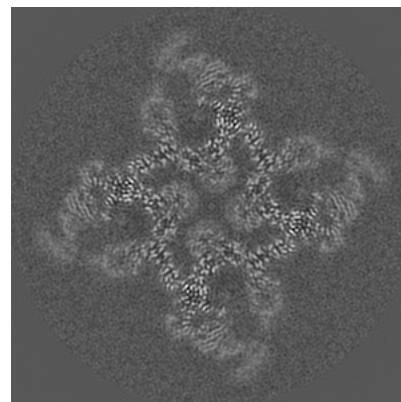
6.3.1 Primary map



X Index: 158

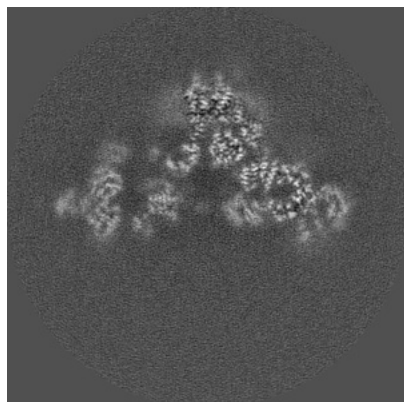


Y Index: 182

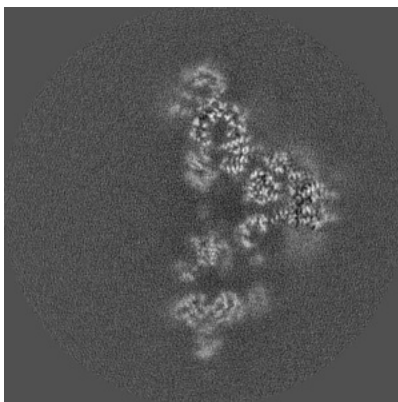


Z Index: 171

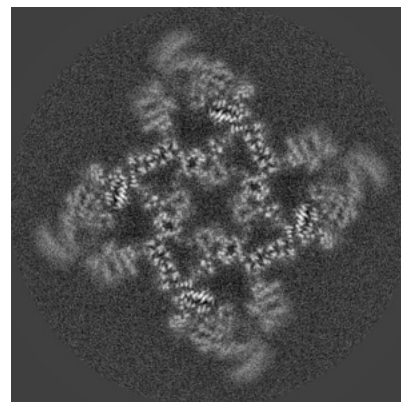
6.3.2 Raw map



X Index: 181



Y Index: 159

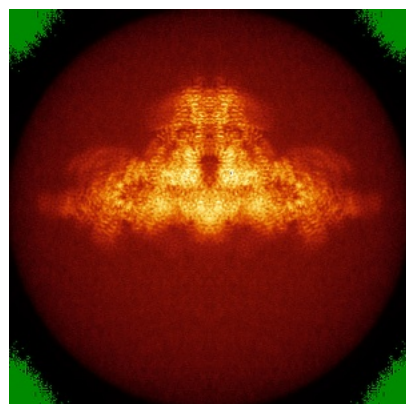


Z Index: 175

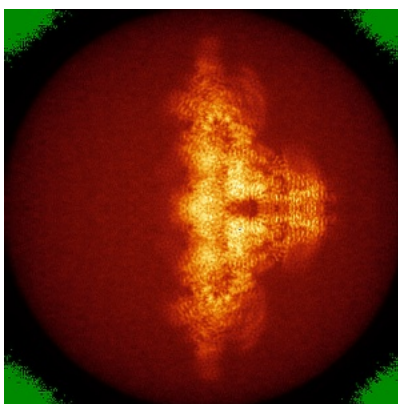
The images above show the largest variance slices of the map in three orthogonal directions.

6.4 Orthogonal standard-deviation projections (False-color) [i](#)

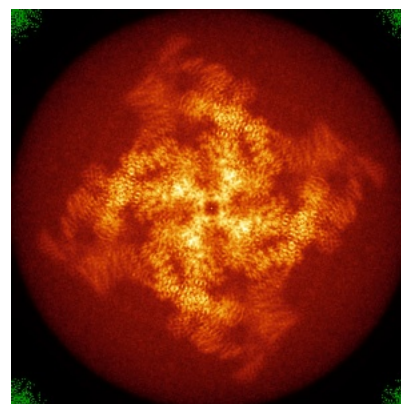
6.4.1 Primary map



X

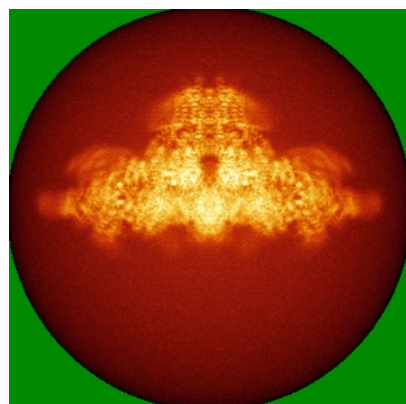


Y

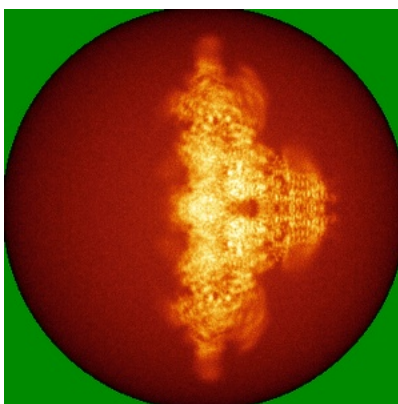


Z

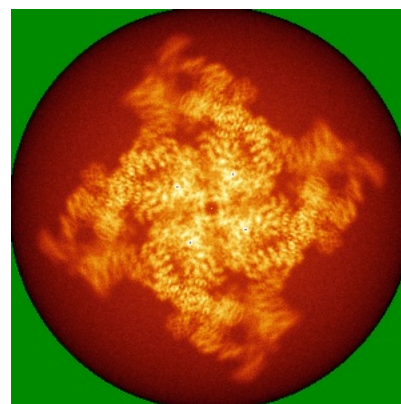
6.4.2 Raw map



X



Y

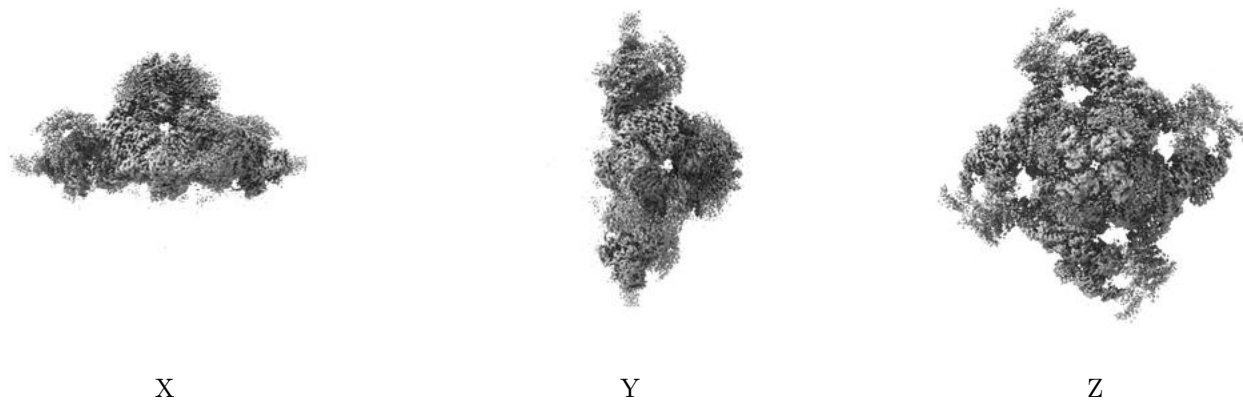


Z

The images above show the map standard deviation projections with false color in three orthogonal directions. Minimum values are shown in green, max in blue, and dark to light orange shades represent small to large values respectively.

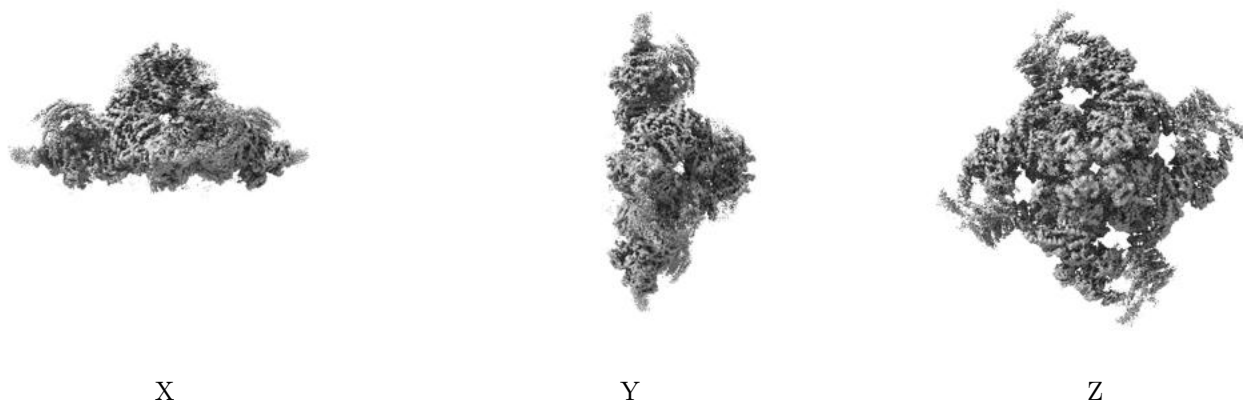
6.5 Orthogonal surface views [i](#)

6.5.1 Primary map



The images above show the 3D surface view of the map at the recommended contour level 0.021. These images, in conjunction with the slice images, may facilitate assessment of whether an appropriate contour level has been provided.

6.5.2 Raw map



These images show the 3D surface of the raw map. The raw map's contour level was selected so that its surface encloses the same volume as the primary map does at its recommended contour level.

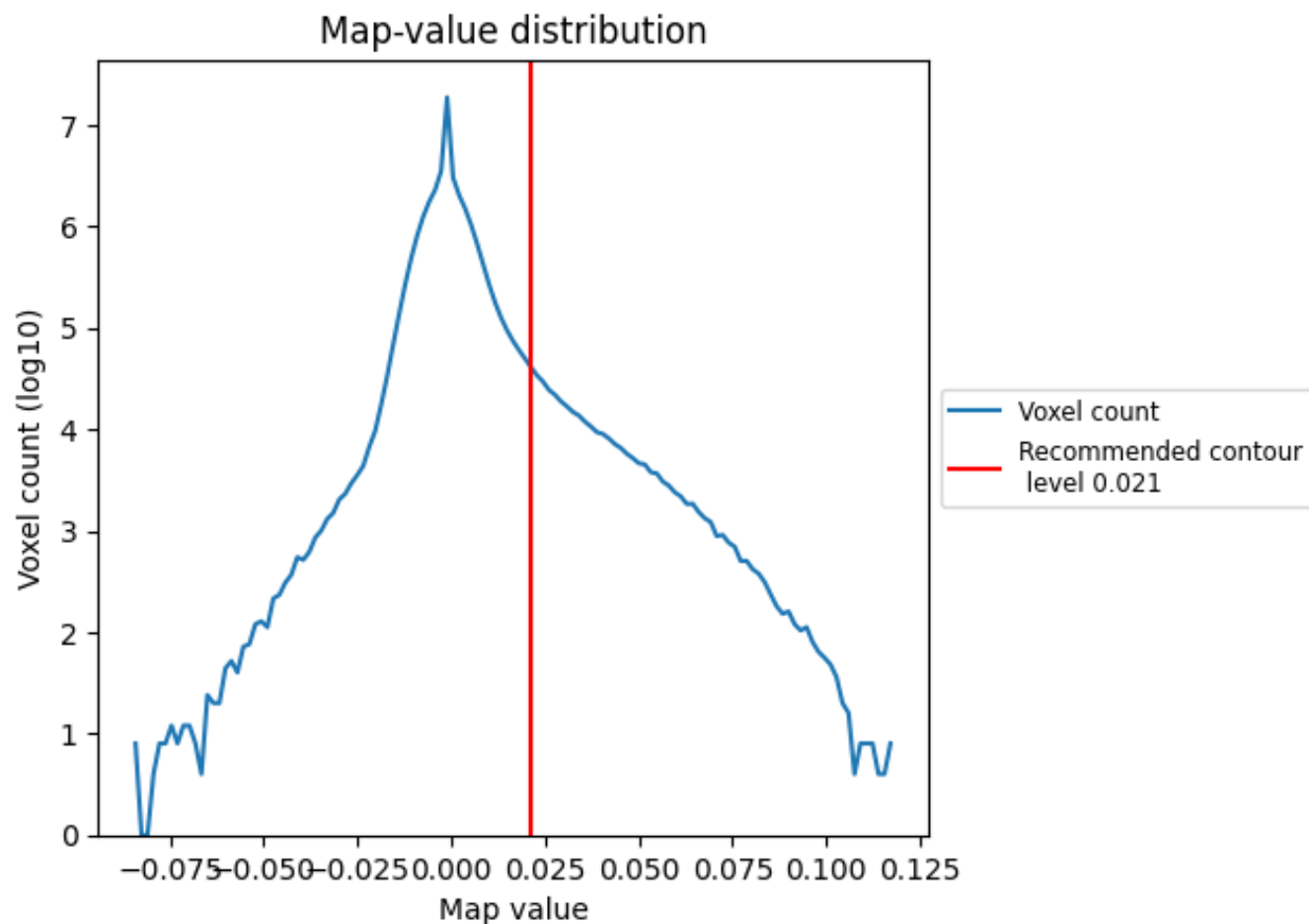
6.6 Mask visualisation [i](#)

This section was not generated. No masks/segmentation were deposited.

7 Map analysis [i](#)

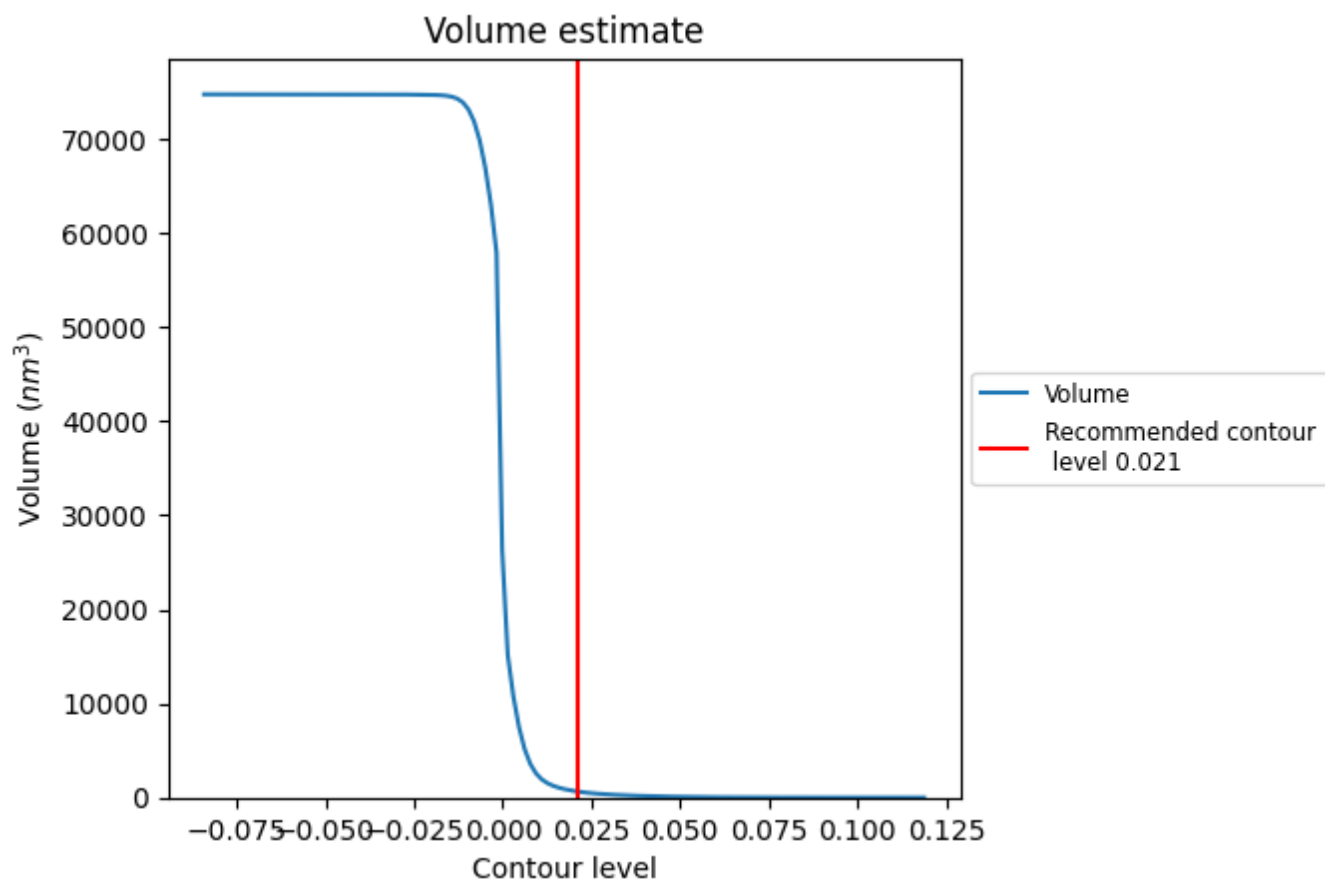
This section contains the results of statistical analysis of the map.

7.1 Map-value distribution [i](#)



The map-value distribution is plotted in 128 intervals along the x-axis. The y-axis is logarithmic. A spike in this graph at zero usually indicates that the volume has been masked.

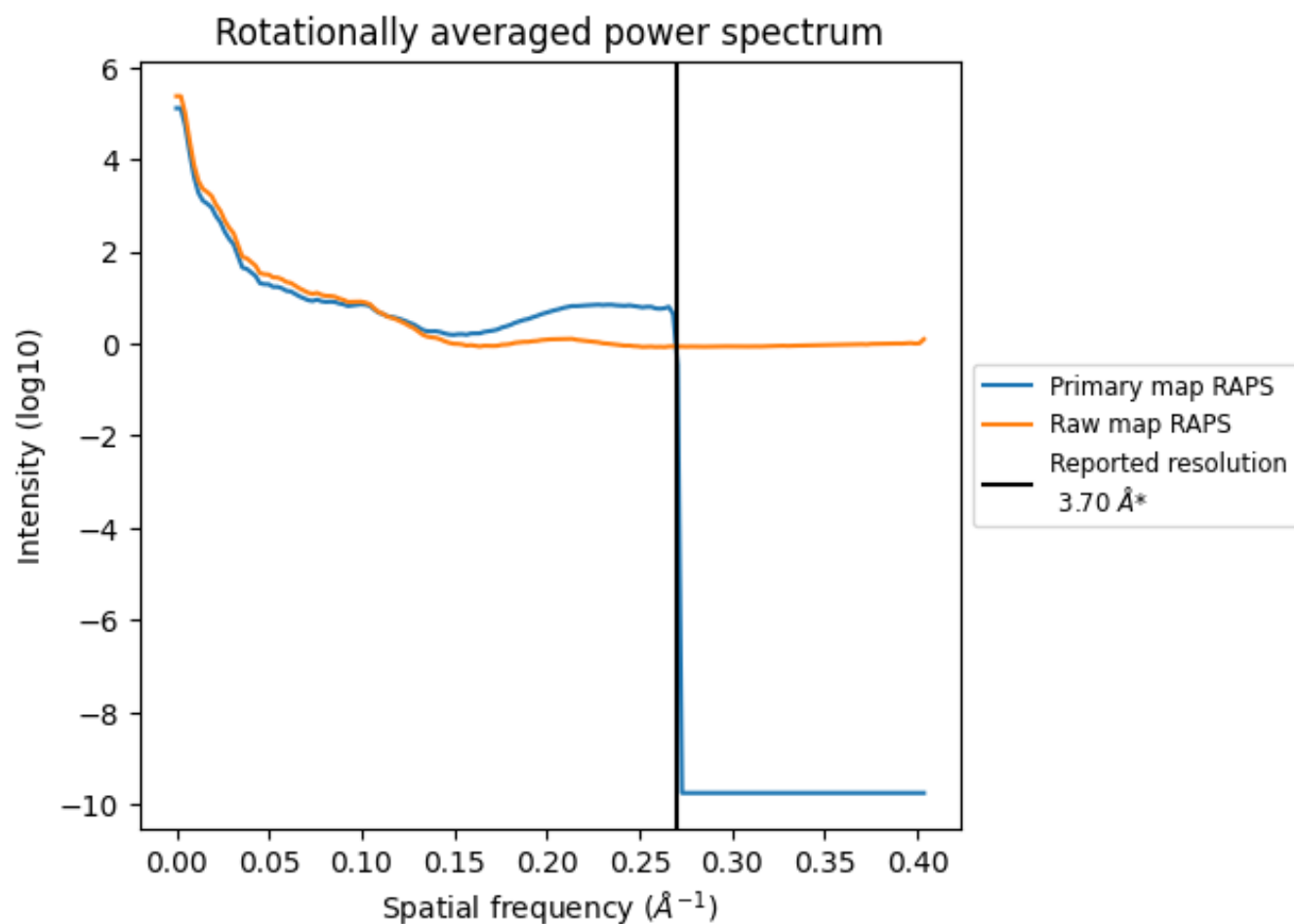
7.2 Volume estimate [i](#)



The volume at the recommended contour level is 646 nm³; this corresponds to an approximate mass of 584 kDa.

The volume estimate graph shows how the enclosed volume varies with the contour level. The recommended contour level is shown as a vertical line and the intersection between the line and the curve gives the volume of the enclosed surface at the given level.

7.3 Rotationally averaged power spectrum ⓘ

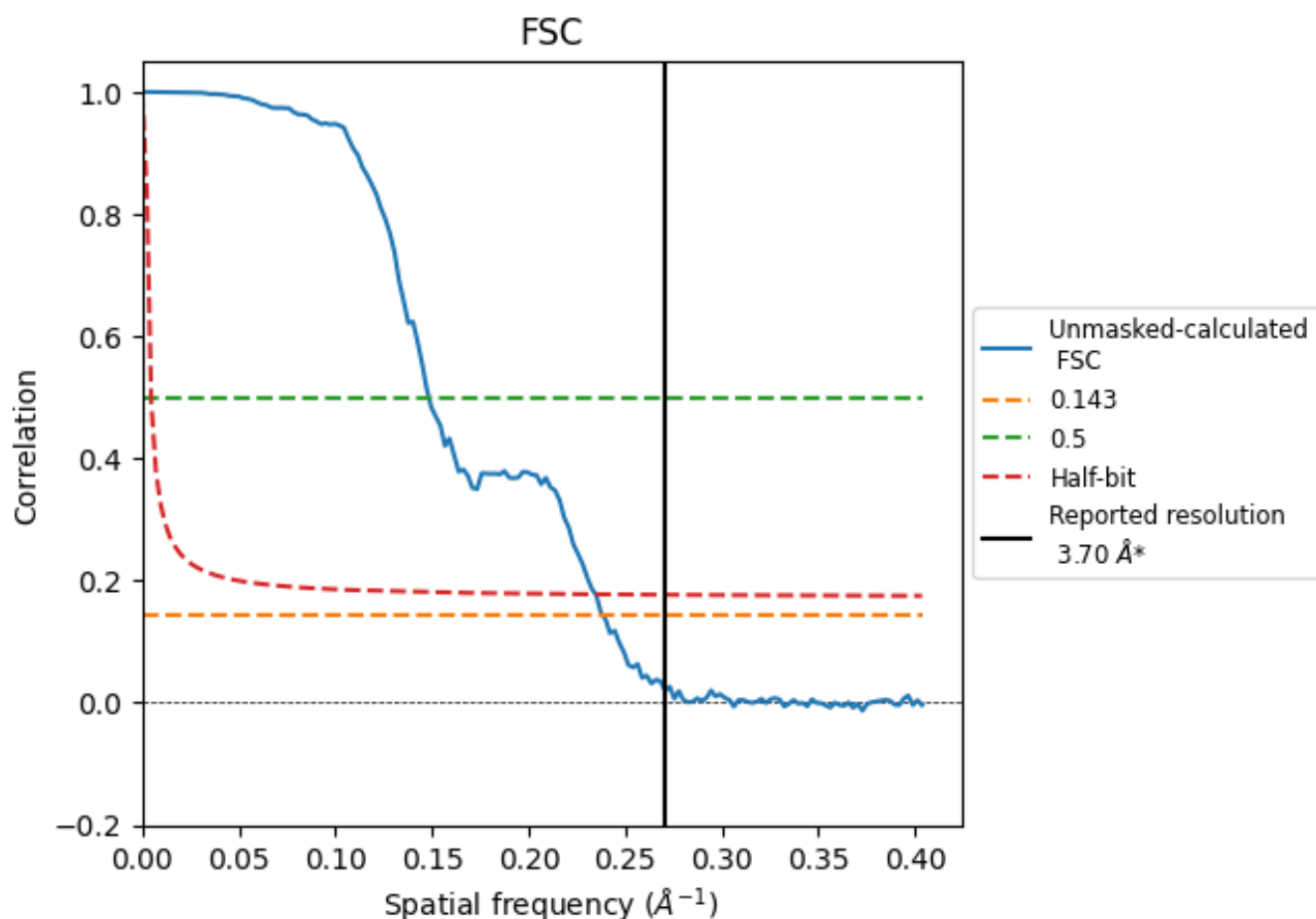


*Reported resolution corresponds to spatial frequency of 0.270 Å⁻¹

8 Fourier-Shell correlation [i](#)

Fourier-Shell Correlation (FSC) is the most commonly used method to estimate the resolution of single-particle and subtomogram-averaged maps. The shape of the curve depends on the imposed symmetry, mask and whether or not the two 3D reconstructions used were processed from a common reference. The reported resolution is shown as a black line. A curve is displayed for the half-bit criterion in addition to lines showing the 0.143 gold standard cut-off and 0.5 cut-off.

8.1 FSC [i](#)



*Reported resolution corresponds to spatial frequency of 0.270 Å⁻¹

8.2 Resolution estimates [i](#)

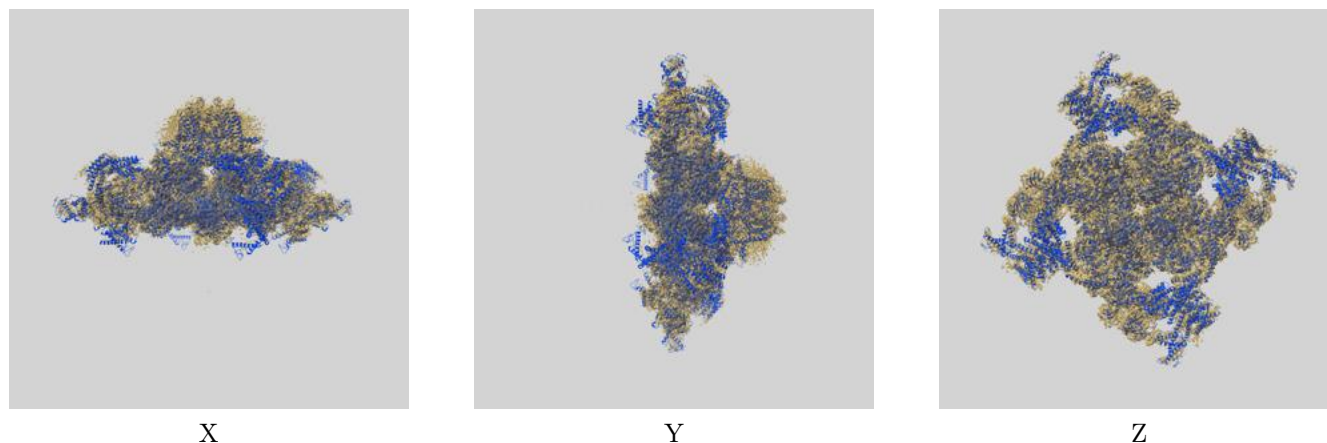
Resolution estimate (Å)	Estimation criterion (FSC cut-off)		
	0.143	0.5	Half-bit
Reported by author	3.70	-	-
Author-provided FSC curve	-	-	-
Unmasked-calculated*	4.20	6.74	4.26

*Resolution estimate based on FSC curve calculated by comparison of deposited half-maps. The value from deposited half-maps intersecting FSC 0.143 CUT-OFF 4.20 differs from the reported value 3.7 by more than 10 %

9 Map-model fit [i](#)

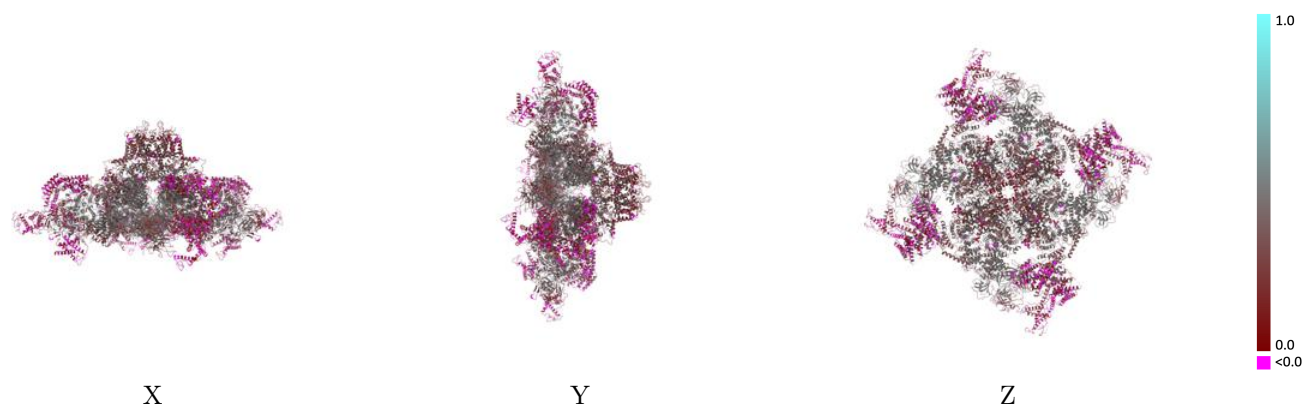
This section contains information regarding the fit between EMDB map EMD-33940 and PDB model 7VMQ. Per-residue inclusion information can be found in section [3](#) on page [12](#).

9.1 Map-model overlay [i](#)



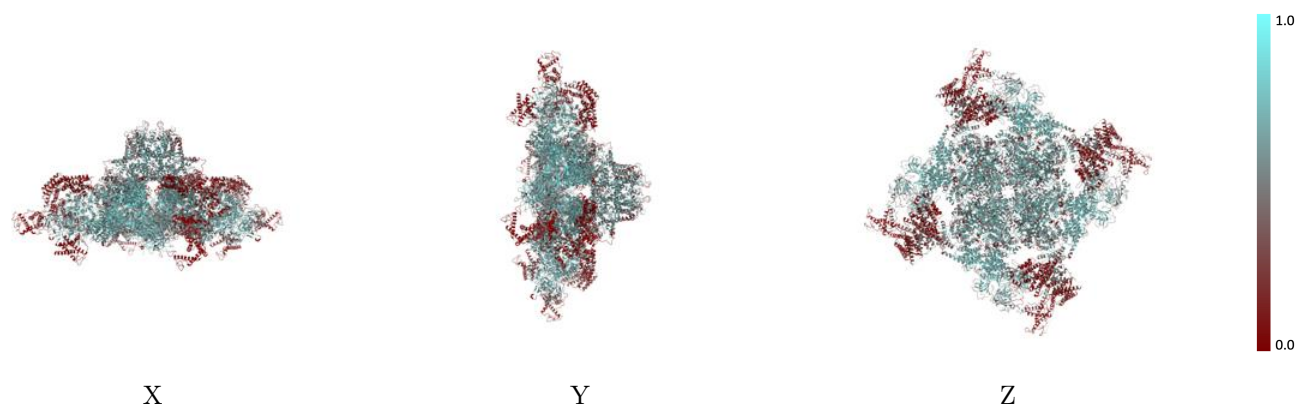
The images above show the 3D surface view of the map at the recommended contour level 0.021 at 50% transparency in yellow overlaid with a ribbon representation of the model coloured in blue. These images allow for the visual assessment of the quality of fit between the atomic model and the map.

9.2 Q-score mapped to coordinate model [i](#)



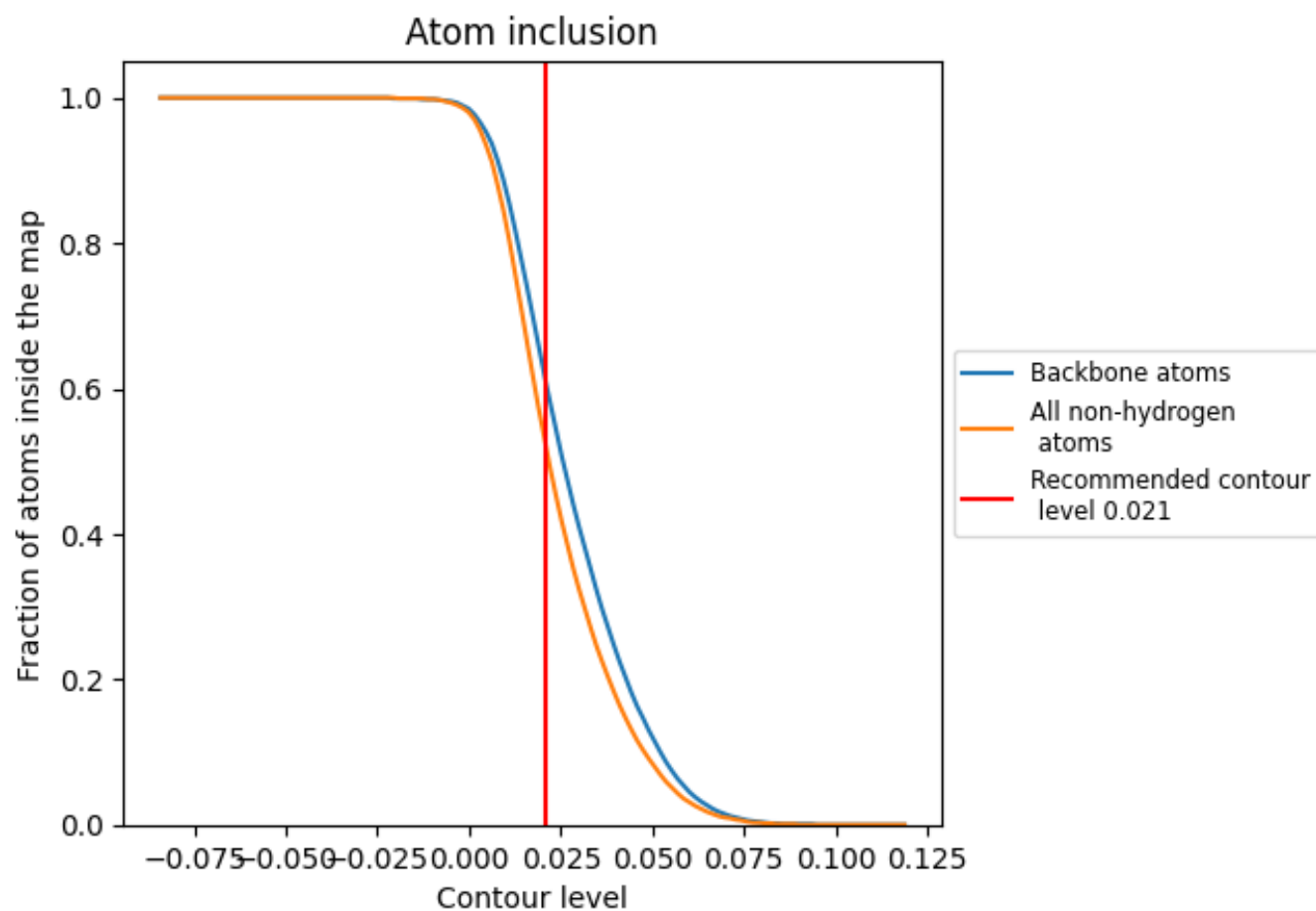
The images above show the model with each residue coloured according to its Q-score. This shows their resolvability in the map with higher Q-score values reflecting better resolvability. Please note: Q-score is calculating the resolvability of atoms, and thus high values are only expected at resolutions at which atoms can be resolved. Low Q-score values may therefore be expected for many entries.

9.3 Atom inclusion mapped to coordinate model [i](#)



The images above show the model with each residue coloured according to its atom inclusion. This shows to what extent they are inside the map at the recommended contour level (0.021).

9.4 Atom inclusion [i](#)



At the recommended contour level, 61% of all backbone atoms, 52% of all non-hydrogen atoms, are inside the map.

9.5 Map-model fit summary ⓘ

The table lists the average atom inclusion at the recommended contour level (0.021) and Q-score for the entire model and for each chain.

Chain	Atom inclusion	Q-score
All	<div></div> 0.5190	<div></div> 0.3060
A	<div></div> 0.5170	<div></div> 0.3040
B	<div></div> 0.5160	<div></div> 0.3050
C	<div></div> 0.5140	<div></div> 0.3020
D	<div></div> 0.5150	<div></div> 0.3030
G	<div></div> 0.6250	<div></div> 0.4110
H	<div></div> 0.6250	<div></div> 0.4140
I	<div></div> 0.6320	<div></div> 0.4170
J	<div></div> 0.6330	<div></div> 0.4150

1.0

0.0

<0.0