



wwPDB EM Validation Summary Report ⓘ

Mar 4, 2026 – 10:48 PM UTC

PDB ID : 7VB7 / pdb_00007vb7
EMDB ID : EMD-31874
Title : Matrix arm of active state CI from DQ-NADH dataset
Authors : Gu, J.K.; Yang, M.J.
Deposited on : 2021-08-30
Resolution : 2.40 Å(reported)

This is a wwPDB EM Validation Summary Report for a publicly released PDB entry.

We welcome your comments at validation@mail.wwpdb.org

A user guide is available at

<https://www.wwpdb.org/validation/2017/EMValidationReportHelp>

with specific help available everywhere you see the ⓘ symbol.

The types of validation reports are described at

<http://www.wwpdb.org/validation/2017/FAQs#types>.

The following versions of software and data (see [references ⓘ](#)) were used in the production of this report:

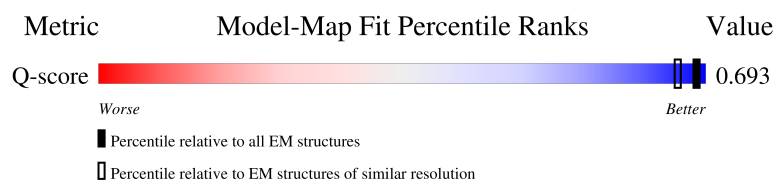
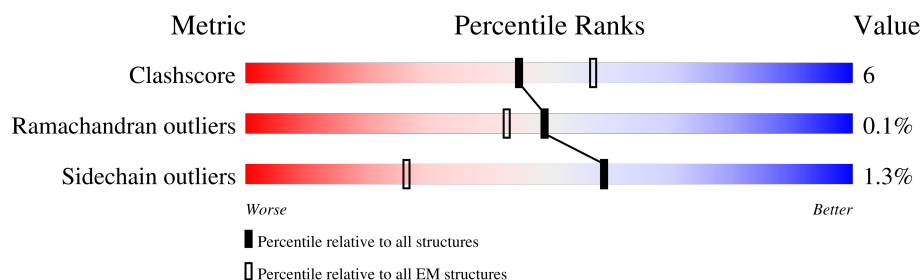
EMDB validation analysis : 0.0.1.dev132
Mogul : 2022.3.0, CSD as543be (2022)
MolProbity : 4-5-2 with Phenix2.0
Buster-report : wwPDB partial adaption of 1.1.7 (2018)
Percentile statistics : 20250101.v01 (using entries in the PDB archive January 1st 2025)
EM percentile statistics : 202505.v01 (Using data in the EMDB archive up until May 2025)
MapQ : 1.9.13
Ideal geometry (proteins) : Engh & Huber (2001)
Ideal geometry (DNA, RNA) : Parkinson et al. (1996)
Validation Pipeline (wwPDB-VP) : 2.49

1 Overall quality at a glance

The following experimental techniques were used to determine the structure:
ELECTRON MICROSCOPY

The reported resolution of this entry is 2.40 Å.

Percentile scores (ranging between 0-100) for global validation metrics of the entry are shown in the following graphic. The table shows the number of entries on which the scores are based.



Metric	Whole archive (#Entries)	EM structures (#Entries)	Similar EM resolution (#Entries, resolution range(Å))
Clashscore	229148	23984	-
Ramachandran outliers	224038	23583	-
Sidechain outliers	223484	23102	-
Q-score	-	25397	5628 (1.90 - 2.90)

The table below summarises the geometric issues observed across the polymeric chains and their fit to the map. The red, orange, yellow and green segments of the bar indicate the fraction of residues that contain outliers for ≥ 3 , 2, 1 and 0 types of geometric quality criteria respectively. A grey segment represents the fraction of residues that are not modelled. The numeric value for each fraction is indicated below the corresponding segment, with a dot representing fractions $\leq 5\%$. The upper red bar (where present) indicates the fraction of residues that have poor fit to the EM map (all-atom inclusion $< 40\%$). The numeric value is given above the bar.

Mol	Chain	Length	Quality of chain
1	A	433	
2	B	176	
3	C	156	
4	E	115	

Continued on next page...

Continued from previous page...

Mol	Chain	Length	Quality of chain
5	F	86	
6	G	88	
7	H	112	
8	I	112	
9	J	342	
10	K	43	
11	L	125	
12	M	690	
13	N	144	
14	O	217	
15	P	208	
16	Q	386	
17	T	96	
18	W	29	

The following table lists non-polymeric compounds, carbohydrate monomers and non-standard residues in protein, DNA, RNA chains that are outliers for geometric or electron-density-fit criteria:

Mol	Type	Chain	Res	Chirality	Geometry	Clashes	Electron density
19	SF4	C	301	-	-	X	-
19	SF4	M	802	-	-	X	-

2 Entry composition [i](#)

There are 32 unique types of molecules in this entry. The entry contains 29279 atoms, of which 0 are hydrogens and 0 are deuteriums.

In the tables below, the AltConf column contains the number of residues with at least one atom in alternate conformation and the Trace column contains the number of residues modelled with at most 2 atoms.

- Molecule 1 is a protein called NADH dehydrogenase [ubiquinone] flavoprotein 1, mitochondrial.

Mol	Chain	Residues	Atoms					AltConf	Trace
1	A	433	Total	C	N	O	S	0	0
			3330	2103	593	614	20		

- Molecule 2 is a protein called NADH dehydrogenase [ubiquinone] iron-sulfur protein 8, mitochondrial.

Mol	Chain	Residues	Atoms					AltConf	Trace
2	B	176	Total	C	N	O	S	0	0
			1412	887	243	269	13		

- Molecule 3 is a protein called NADH dehydrogenase [ubiquinone] iron-sulfur protein 7, mitochondrial.

Mol	Chain	Residues	Atoms					AltConf	Trace
3	C	156	Total	C	N	O	S	0	0
			1248	794	227	213	14		

- Molecule 4 is a protein called NADH dehydrogenase [ubiquinone] 1 alpha subcomplex subunit 6.

Mol	Chain	Residues	Atoms					AltConf	Trace
4	E	115	Total	C	N	O	S	0	0
			971	619	179	168	5		

- Molecule 5 is a protein called NADH dehydrogenase [ubiquinone] 1 alpha subcomplex subunit 2.

Mol	Chain	Residues	Atoms					AltConf	Trace
5	F	86	Total	C	N	O	S	0	0
			687	432	129	124	2		

- Molecule 6 is a protein called Acyl carrier protein, mitochondrial.

Mol	Chain	Residues	Atoms					AltConf	Trace
6	G	88	Total	C	N	O	S	0	0
			693	447	102	139	5		

- Molecule 7 is a protein called NADH dehydrogenase [ubiquinone] 1 alpha subcomplex subunit 5.

Mol	Chain	Residues	Atoms					AltConf	Trace
7	H	112	Total	C	N	O	S	0	0
			910	588	154	165	3		

- Molecule 8 is a protein called NADH dehydrogenase [ubiquinone] 1 alpha subcomplex subunit 7.

Mol	Chain	Residues	Atoms					AltConf	Trace
8	I	97	Total	C	N	O	S	0	0
			780	491	147	139	3		

- Molecule 9 is a protein called NADH dehydrogenase ubiquinone 1 alpha subcomplex subunit 9, mitochondrial.

Mol	Chain	Residues	Atoms					AltConf	Trace
9	J	342	Total	C	N	O	S	0	0
			2751	1783	481	478	9		

- Molecule 10 is a protein called NADH dehydrogenase [ubiquinone] flavoprotein 3, mitochondrial.

Mol	Chain	Residues	Atoms					AltConf	Trace
10	K	43	Total	C	N	O	S	0	0
			366	228	68	69	1		

- Molecule 11 is a protein called NADH dehydrogenase [ubiquinone] iron-sulfur protein 4, mitochondrial.

Mol	Chain	Residues	Atoms					AltConf	Trace
11	L	125	Total	C	N	O	S	0	0
			1016	642	181	190	3		

- Molecule 12 is a protein called NADH-ubiquinone oxidoreductase 75 kDa subunit, mitochondrial.

Mol	Chain	Residues	Atoms					AltConf	Trace
12	M	690	Total	C	N	O	S	0	0
			5296	3320	923	1014	39		

- Molecule 13 is a protein called NADH dehydrogenase [ubiquinone] 1 alpha subcomplex subunit 12.

Mol	Chain	Residues	Atoms					AltConf	Trace
13	N	144	Total	C	N	O	S	0	0
			1204	770	218	212	4		

- Molecule 14 is a protein called NADH dehydrogenase [ubiquinone] flavoprotein 2, mitochondrial.

Mol	Chain	Residues	Atoms					AltConf	Trace
14	O	217	Total	C	N	O	S	0	0
			1671	1065	281	315	10		

- Molecule 15 is a protein called NADH dehydrogenase [ubiquinone] iron-sulfur protein 3, mitochondrial.

Mol	Chain	Residues	Atoms					AltConf	Trace
15	P	208	Total	C	N	O	S	0	0
			1738	1124	298	314	2		

- Molecule 16 is a protein called NADH dehydrogenase [ubiquinone] iron-sulfur protein 2, mitochondrial.

Mol	Chain	Residues	Atoms					AltConf	Trace
16	Q	386	Total	C	N	O	S	0	0
			3096	1976	534	563	23		

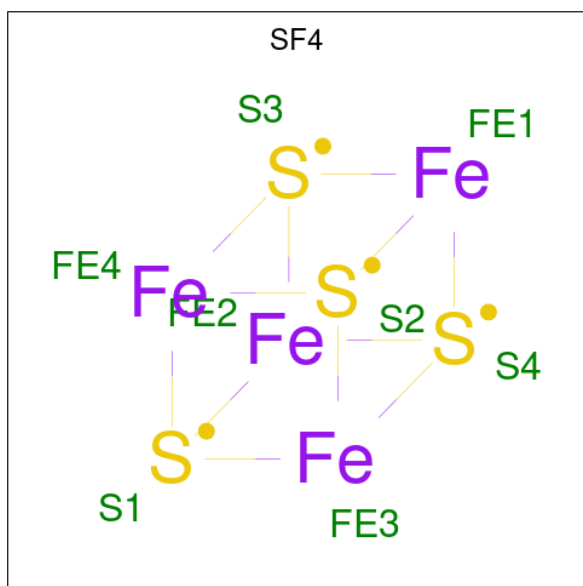
- Molecule 17 is a protein called NADH dehydrogenase [ubiquinone] iron-sulfur protein 6, mitochondrial.

Mol	Chain	Residues	Atoms					AltConf	Trace
17	T	96	Total	C	N	O	S	0	0
			741	452	140	146	3		

- Molecule 18 is a protein called NADH dehydrogenase [ubiquinone] 1 alpha subcomplex subunit 13.

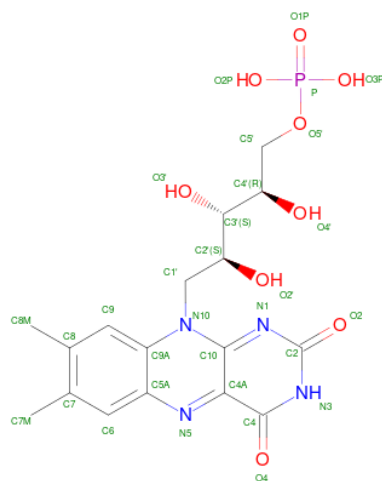
Mol	Chain	Residues	Atoms					AltConf	Trace
18	W	29	Total	C	N	O	S	0	0
			212	135	37	39	1		

- Molecule 19 is IRON/SULFUR CLUSTER (CCD ID: SF4) (formula: Fe_4S_4) (labeled as "Ligand of Interest" by depositor).



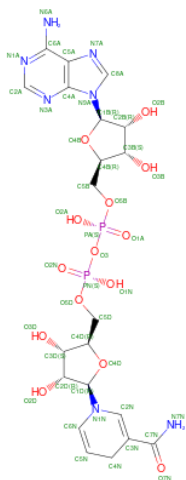
Mol	Chain	Residues	Atoms			AltConf
19	A	1	Total	Fe	S	0
			8	4	4	
19	B	1	Total	Fe	S	0
			8	4	4	
19	B	1	Total	Fe	S	0
			8	4	4	
19	C	1	Total	Fe	S	0
			8	4	4	
19	M	1	Total	Fe	S	0
			8	4	4	
19	M	1	Total	Fe	S	0
			8	4	4	

- Molecule 20 is FLAVIN MONONUCLEOTIDE (CCD ID: FMN) (formula: $\text{C}_{17}\text{H}_{21}\text{N}_4\text{O}_9\text{P}$) (labeled as "Ligand of Interest" by depositor).



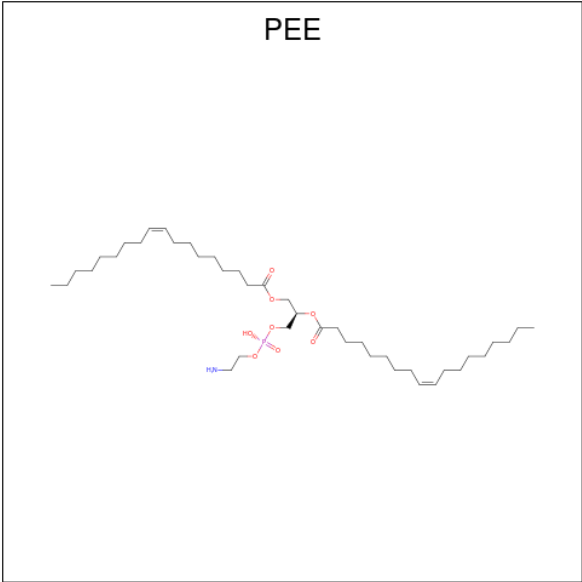
Mol	Chain	Residues	Atoms					AltConf
20	A	1	Total	C	N	O	P	0
			31	17	4	9	1	

- Molecule 21 is 1,4-DIHYDRONICOTINAMIDE ADENINE DINUCLEOTIDE (CCD ID: NAI) (formula: $C_{21}H_{29}N_7O_{14}P_2$) (labeled as "Ligand of Interest" by depositor).



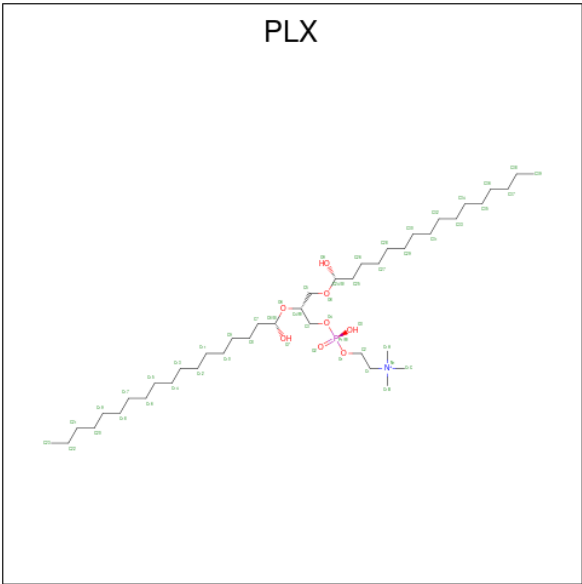
Mol	Chain	Residues	Atoms					AltConf
21	A	1	Total 44	C 21	N 7	O 14	P 2	0

- Molecule 22 is 1,2-dioleoyl-sn-glycero-3-phosphoethanolamine (CCD ID: PEE) (formula: $C_{41}H_{78}NO_8P$) (labeled as "Ligand of Interest" by depositor).



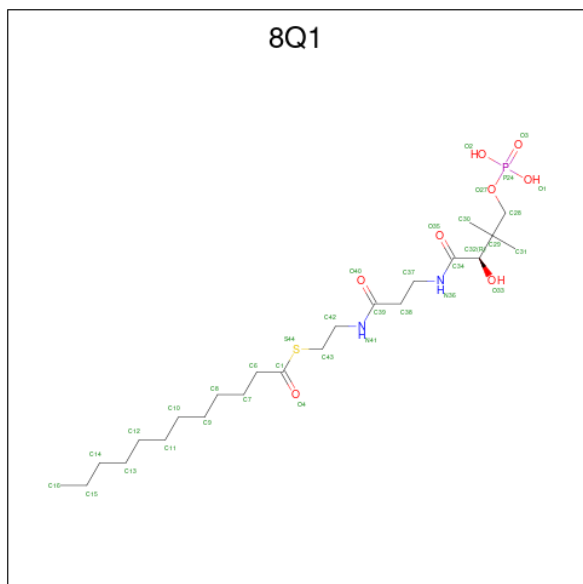
Mol	Chain	Residues	Atoms					AltConf
22	C	1	Total	C	N	O	P	0
			47	37	1	8	1	

- Molecule 23 is (9R,11S)-9-([[(1S)-1-HYDROXYHEXADECYL]OXY}METHYL)-2,2-DIMETHYL-5,7,10-TRIOXA-2LAMBDA 5 -AZA-6LAMBDA 5 -PHOSPHAOCTACOSANE-6,6,11-TRIOL (CCD ID: PLX) (formula: C₄₂H₈₉NO₈P) (labeled as "Ligand of Interest" by depositor).



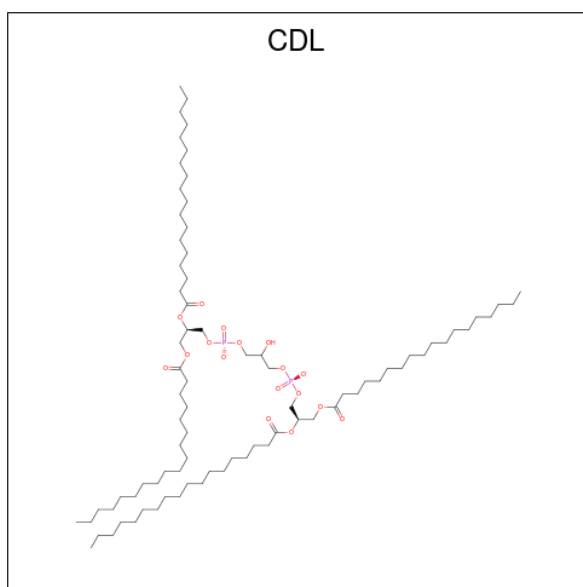
Mol	Chain	Residues	Atoms					AltConf
23	C	1	Total	C	N	O	P	0
			52	42	1	8	1	

- Molecule 24 is S-[2-({N-[(2R)-2-hydroxy-3,3-dimethyl-4-(phosphonooxy)butanoyl]-beta-alanyl}amino)ethyl] dodecanethioate (CCD ID: 8Q1) (formula: $C_{23}H_{45}N_2O_8PS$) (labeled as "Ligand of Interest" by depositor).



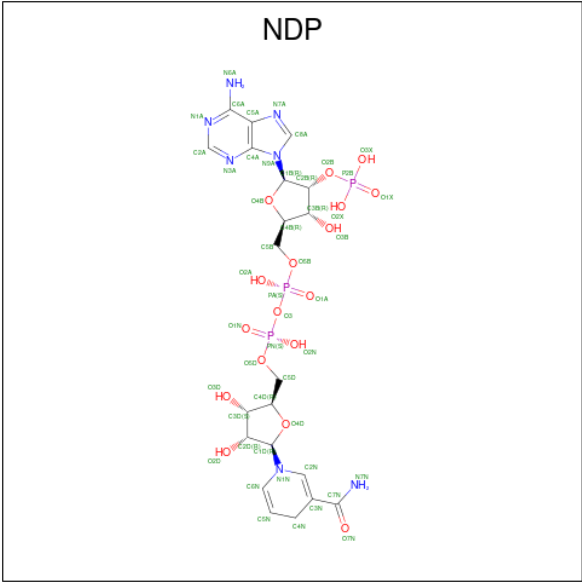
Mol	Chain	Residues	Atoms						AltConf
24	E	1	Total	C	N	O	P	S	0
			35	23	2	8	1	1	

- Molecule 25 is CARDIOLIPIN (CCD ID: CDL) (formula: $C_{81}H_{156}O_{17}P_2$) (labeled as "Ligand of Interest" by depositor).



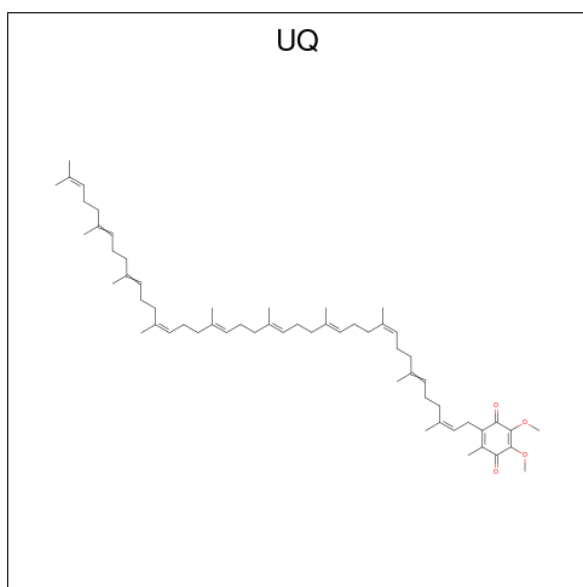
Mol	Chain	Residues	Atoms				AltConf
25	I	1	Total	C	O	P	0
			50	31	17	2	

- Molecule 26 is NADPH DIHYDRO-NICOTINAMIDE-ADENINE-DINUCLEOTIDE PHOSPHATE (CCD ID: NDP) (formula: C₂₁H₃₀N₇O₁₇P₃) (labeled as "Ligand of Interest" by depositor).



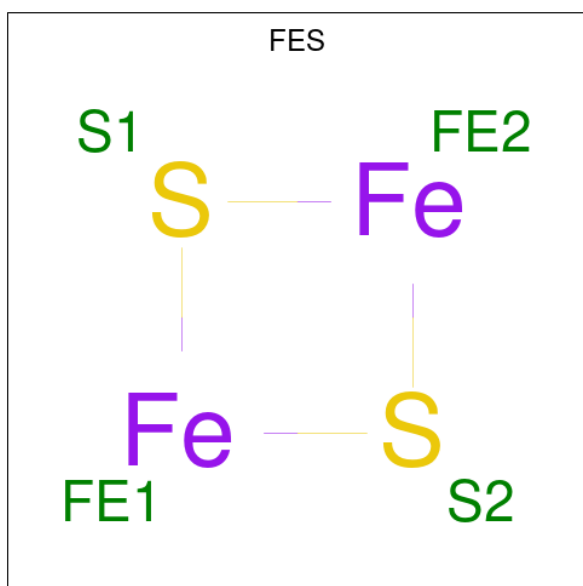
Mol	Chain	Residues	Atoms					AltConf
26	J	1	Total	C	N	O	P	0
			48	21	7	17	3	

- Molecule 27 is Coenzyme Q10, (2Z,6E,10Z,14E,18E,22E,26Z)-isomer (CCD ID: UQ) (formula: C₅₉H₉₀O₄) (labeled as "Ligand of Interest" by depositor).



Mol	Chain	Residues	Atoms			AltConf
27	J	1	Total	C	O	0
			33	29	4	

- Molecule 28 is FE2/S2 (INORGANIC) CLUSTER (CCD ID: FES) (formula: Fe_2S_2) (labeled as "Ligand of Interest" by depositor).

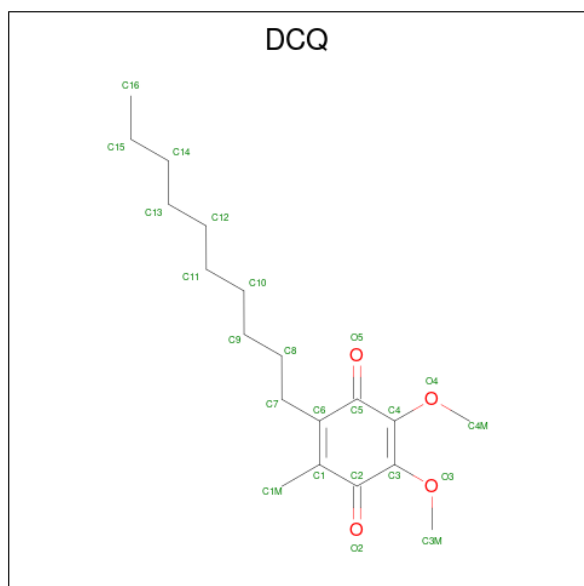


Mol	Chain	Residues	Atoms			AltConf
28	M	1	Total	Fe	S	0
			4	2	2	
28	O	1	Total	Fe	S	0
			4	2	2	

- Molecule 29 is MAGNESIUM ION (CCD ID: MG) (formula: Mg) (labeled as "Ligand of Interest" by depositor).

Mol	Chain	Residues	Atoms		AltConf
29	M	1	Total	Mg	0
			1	1	

- Molecule 30 is 2-decyl-5,6-dimethoxy-3-methylcyclohexa-2,5-diene-1,4-dione (CCD ID: DCQ) (formula: C₁₉H₃₀O₄) (labeled as "Ligand of Interest" by depositor).



Mol	Chain	Residues	Atoms			AltConf
30	Q	1	Total	C	O	0
			23	19	4	

- Molecule 31 is ZINC ION (CCD ID: ZN) (formula: Zn) (labeled as "Ligand of Interest" by depositor).

Mol	Chain	Residues	Atoms		AltConf
31	T	1	Total	Zn	0
			1	1	

- Molecule 32 is water.

Mol	Chain	Residues	Atoms		AltConf
32	A	53	Total	O	0
			53	53	
32	B	80	Total	O	0
			80	80	

Continued on next page...

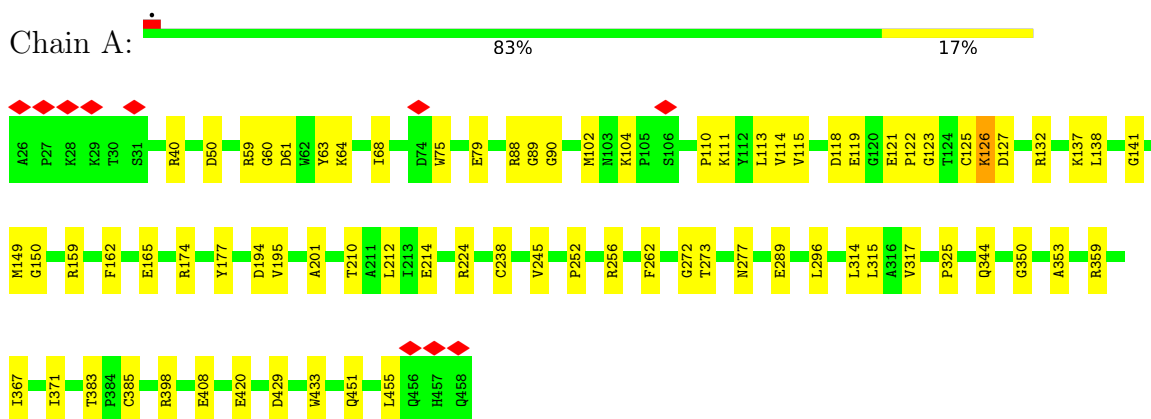
Continued from previous page...

Mol	Chain	Residues	Atoms		AltConf
32	C	58	Total 58	O 58	0
32	E	3	Total 3	O 3	0
32	F	1	Total 1	O 1	0
32	H	4	Total 4	O 4	0
32	I	13	Total 13	O 13	0
32	J	5	Total 5	O 5	0
32	K	4	Total 4	O 4	0
32	L	24	Total 24	O 24	0
32	M	196	Total 196	O 196	0
32	N	5	Total 5	O 5	0
32	O	17	Total 17	O 17	0
32	P	74	Total 74	O 74	0
32	Q	189	Total 189	O 189	0
32	T	8	Total 8	O 8	0
32	W	2	Total 2	O 2	0

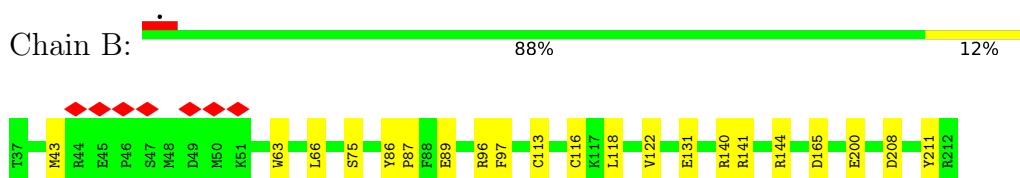
3 Residue-property plots

These plots are drawn for all protein, RNA, DNA and oligosaccharide chains in the entry. The first graphic for a chain summarises the proportions of the various outlier classes displayed in the second graphic. The second graphic shows the sequence view annotated by issues in geometry and atom inclusion in map density. Residues are color-coded according to the number of geometric quality criteria for which they contain at least one outlier: green = 0, yellow = 1, orange = 2 and red = 3 or more. A red diamond above a residue indicates a poor fit to the EM map for this residue (all-atom inclusion < 40%). Stretches of 2 or more consecutive residues without any outlier are shown as a green connector. Residues present in the sample, but not in the model, are shown in grey.

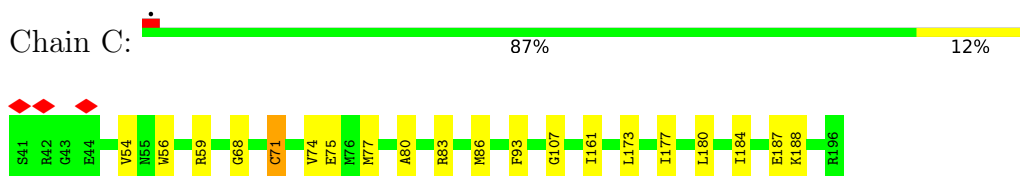
- Molecule 1: NADH dehydrogenase [ubiquinone] flavoprotein 1, mitochondrial



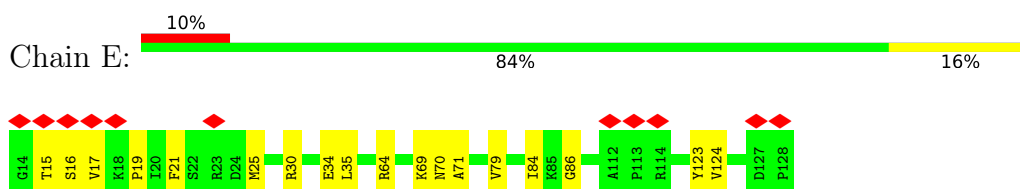
- Molecule 2: NADH dehydrogenase [ubiquinone] iron-sulfur protein 8, mitochondrial



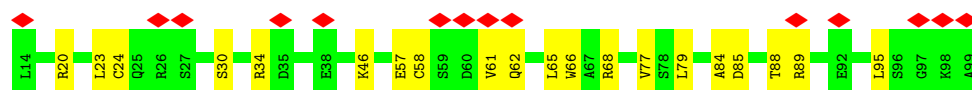
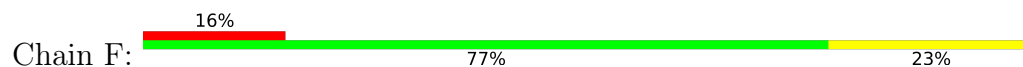
- Molecule 3: NADH dehydrogenase [ubiquinone] iron-sulfur protein 7, mitochondrial



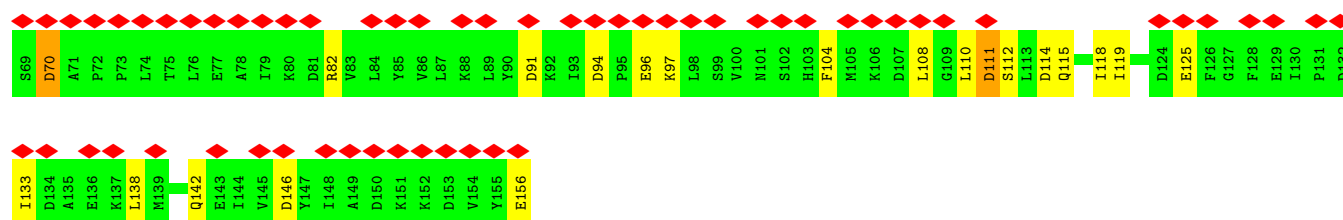
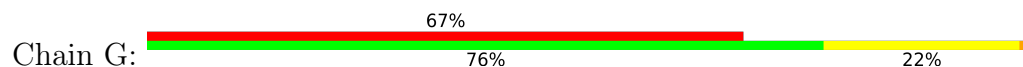
- Molecule 4: NADH dehydrogenase [ubiquinone] 1 alpha subcomplex subunit 6



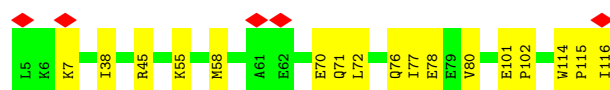
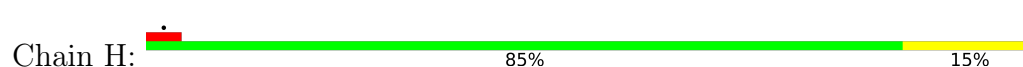
- Molecule 5: NADH dehydrogenase [ubiquinone] 1 alpha subcomplex subunit 2



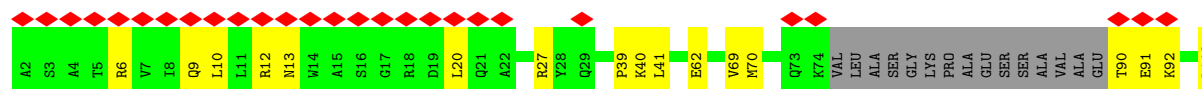
- Molecule 6: Acyl carrier protein, mitochondrial



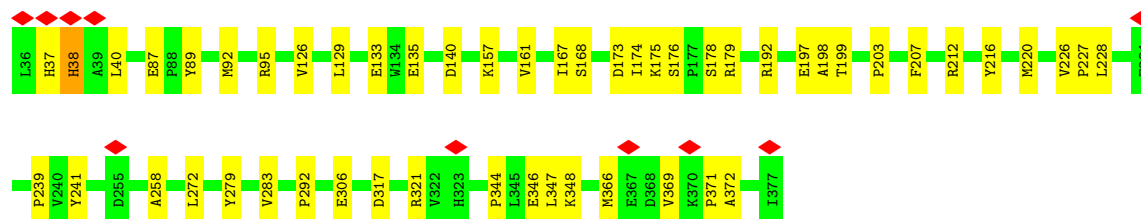
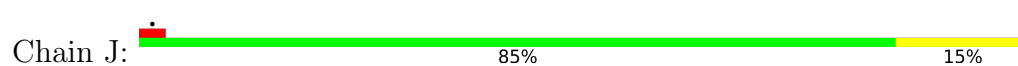
- Molecule 7: NADH dehydrogenase [ubiquinone] 1 alpha subcomplex subunit 5



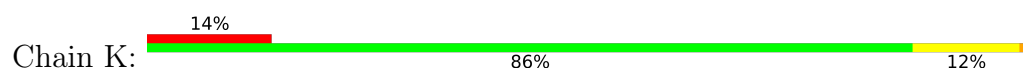
- Molecule 8: NADH dehydrogenase [ubiquinone] 1 alpha subcomplex subunit 7

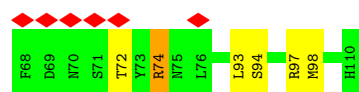


- Molecule 9: NADH dehydrogenase ubiquinone 1 alpha subcomplex subunit 9, mitochondrial

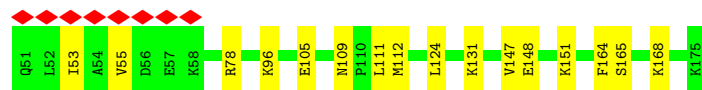
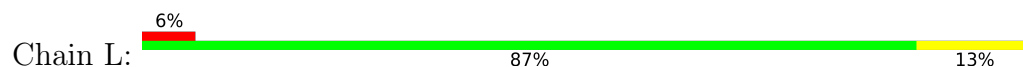


- Molecule 10: NADH dehydrogenase [ubiquinone] flavoprotein 3, mitochondrial

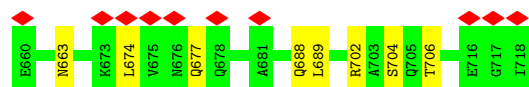
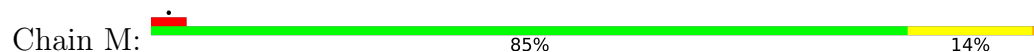




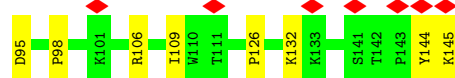
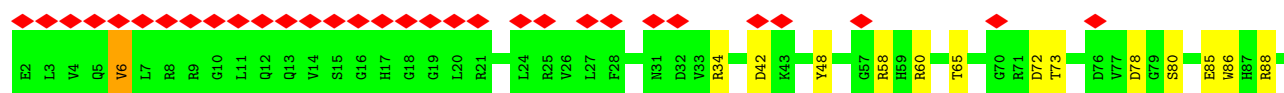
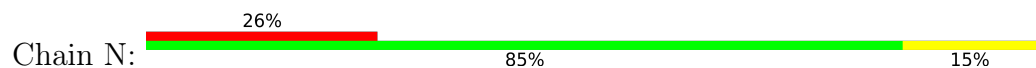
- Molecule 11: NADH dehydrogenase [ubiquinone] iron-sulfur protein 4, mitochondrial



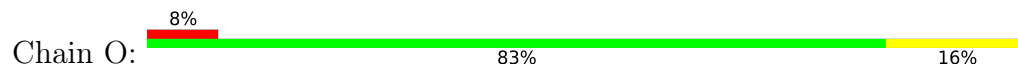
- Molecule 12: NADH-ubiquinone oxidoreductase 75 kDa subunit, mitochondrial

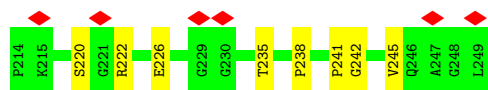


- Molecule 13: NADH dehydrogenase [ubiquinone] 1 alpha subcomplex subunit 12

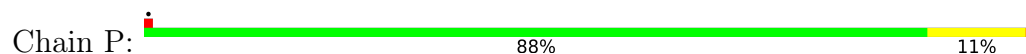


- Molecule 14: NADH dehydrogenase [ubiquinone] flavoprotein 2, mitochondrial

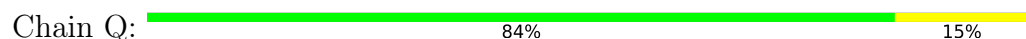




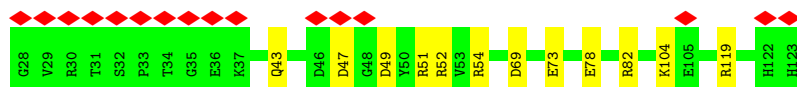
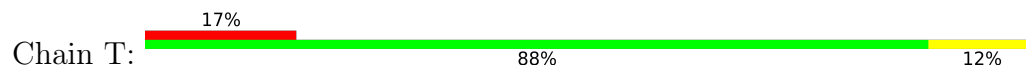
- Molecule 15: NADH dehydrogenase [ubiquinone] iron-sulfur protein 3, mitochondrial



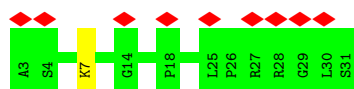
- Molecule 16: NADH dehydrogenase [ubiquinone] iron-sulfur protein 2, mitochondrial



- Molecule 17: NADH dehydrogenase [ubiquinone] iron-sulfur protein 6, mitochondrial



- Molecule 18: NADH dehydrogenase [ubiquinone] 1 alpha subcomplex subunit 13



4 Experimental information

Property	Value	Source
EM reconstruction method	SINGLE PARTICLE	Depositor
Imposed symmetry	POINT, Not provided	
Number of particles used	462013	Depositor
Resolution determination method	FSC 0.143 CUT-OFF	Depositor
CTF correction method	PHASE FLIPPING AND AMPLITUDE CORRECTION	Depositor
Microscope	FEI TITAN KRIOS	Depositor
Voltage (kV)	300	Depositor
Electron dose ($e^-/\text{\AA}^2$)	50	Depositor
Minimum defocus (nm)	1300	Depositor
Maximum defocus (nm)	1800	Depositor
Magnification	Not provided	
Image detector	GATAN K3 (6k x 4k)	Depositor
Maximum map value	0.100	Depositor
Minimum map value	-0.061	Depositor
Average map value	0.000	Depositor
Map value standard deviation	0.003	Depositor
Recommended contour level	0.0167	Depositor
Map size (Å)	257.808, 257.808, 257.808	wwPDB
Map dimensions	480, 480, 480	wwPDB
Map angles (°)	90.0, 90.0, 90.0	wwPDB
Pixel spacing (Å)	0.5371, 0.5371, 0.5371	Depositor

5 Model quality

5.1 Standard geometry

Bond lengths and bond angles in the following residue types are not validated in this section: CDL, MG, FES, PEE, 2MR, DCQ, UQ, NAI, ZN, PLX, FMN, NDP, 8Q1, SF4

The Z score for a bond length (or angle) is the number of standard deviations the observed value is removed from the expected value. A bond length (or angle) with $|Z| > 5$ is considered an outlier worth inspection. RMSZ is the root-mean-square of all Z scores of the bond lengths (or angles).

Mol	Chain	Bond lengths		Bond angles	
		RMSZ	$\# Z > 5$	RMSZ	$\# Z > 5$
1	A	0.18	0/3406	0.43	1/4603 (0.0%)
2	B	0.16	0/1443	0.36	0/1952
3	C	0.17	0/1279	0.39	0/1730
4	E	0.17	0/995	0.38	0/1340
5	F	0.17	0/698	0.40	0/940
6	G	0.15	0/705	0.38	0/956
7	H	0.18	0/929	0.49	0/1258
8	I	0.20	0/798	0.49	0/1079
9	J	0.16	0/2828	0.37	0/3834
10	K	0.14	0/377	0.37	0/509
11	L	0.15	0/1039	0.37	0/1403
12	M	0.19	0/5384	0.47	6/7295 (0.1%)
13	N	0.14	0/1245	0.34	0/1694
14	O	0.17	0/1711	0.41	0/2328
15	P	0.17	0/1789	0.45	1/2436 (0.0%)
16	Q	0.34	3/3157 (0.1%)	0.44	1/4268 (0.0%)
17	T	0.14	0/755	0.35	0/1018
18	W	0.27	0/218	0.76	0/295
All	All	0.20	3/28756 (0.0%)	0.42	9/38938 (0.0%)

All (3) bond length outliers are listed below:

Mol	Chain	Res	Type	Atoms	Z	Observed(Å)	Ideal(Å)
16	Q	192	LEU	C-N	10.17	1.47	1.33
16	Q	141	TYR	C-N	-7.79	1.23	1.33
16	Q	92	HIS	C-N	-6.82	1.23	1.33

The worst 5 of 9 bond angle outliers are listed below:

Mol	Chain	Res	Type	Atoms	Z	Observed(°)	Ideal(°)
16	Q	94	VAL	N-CA-C	7.62	119.45	112.29

Continued on next page...

Continued from previous page...

Mol	Chain	Res	Type	Atoms	Z	Observed(°)	Ideal(°)
12	M	576	GLY	N-CA-C	6.50	121.08	112.77
12	M	397	ALA	N-CA-C	5.90	118.81	109.96
12	M	396	GLU	N-CA-C	5.79	117.67	111.36
15	P	47	ILE	N-CA-C	5.39	116.00	108.89

There are no chirality outliers.

There are no planarity outliers.

5.2 Too-close contacts

In the following table, the Non-H and H(model) columns list the number of non-hydrogen atoms and hydrogen atoms in the chain respectively. The H(added) column lists the number of hydrogen atoms added and optimized by MolProbity. The Clashes column lists the number of clashes within the asymmetric unit, whereas Symm-Clashes lists symmetry-related clashes.

Mol	Chain	Non-H	H(model)	H(added)	Clashes	Symm-Clashes
1	A	3330	0	3292	50	0
2	B	1412	0	1363	15	0
3	C	1248	0	1254	16	0
4	E	971	0	975	13	0
5	F	687	0	700	11	0
6	G	693	0	671	17	0
7	H	910	0	950	10	0
8	I	780	0	808	14	0
9	J	2751	0	2773	29	0
10	K	366	0	338	4	0
11	L	1016	0	1016	13	0
12	M	5296	0	5327	75	0
13	N	1204	0	1162	16	0
14	O	1671	0	1673	22	0
15	P	1738	0	1693	28	0
16	Q	3096	0	3063	49	0
17	T	741	0	702	9	0
18	W	212	0	208	1	0
19	A	8	0	0	1	0
19	B	16	0	0	0	0
19	C	8	0	0	2	0
19	M	16	0	0	4	0
20	A	31	0	19	1	0
21	A	44	0	27	5	0
22	C	47	0	71	5	0

Continued on next page...

Continued from previous page...

Mol	Chain	Non-H	H(model)	H(added)	Clashes	Symm-Clashes
23	C	52	0	88	2	0
24	E	35	0	0	5	0
25	I	50	0	44	2	0
26	J	48	0	26	0	0
27	J	33	0	39	7	0
28	M	4	0	0	0	0
28	O	4	0	0	0	0
29	M	1	0	0	0	0
30	Q	23	0	30	7	0
31	T	1	0	0	0	0
32	A	53	0	0	1	0
32	B	80	0	0	0	0
32	C	58	0	0	0	0
32	E	3	0	0	0	0
32	F	1	0	0	0	0
32	H	4	0	0	0	0
32	I	13	0	0	0	0
32	J	5	0	0	0	0
32	K	4	0	0	0	0
32	L	24	0	0	0	0
32	M	196	0	0	2	0
32	N	5	0	0	0	0
32	O	17	0	0	1	0
32	P	74	0	0	2	0
32	Q	189	0	0	5	0
32	T	8	0	0	0	0
32	W	2	0	0	0	0
All	All	29279	0	28312	360	0

The all-atom clashscore is defined as the number of clashes found per 1000 atoms (including hydrogen atoms). The all-atom clashscore for this structure is 6.

The worst 5 of 360 close contacts within the same asymmetric unit are listed below, sorted by their clash magnitude.

Atom-1	Atom-2	Interatomic distance (Å)	Clash overlap (Å)
15:P:44:ARG:HB3	15:P:45:PRO:CD	1.66	1.26
24:E:201:8Q1:O2	6:G:112:SER:CB	1.83	1.25
21:A:503:NAI:C1B	21:A:503:NAI:O4B	1.63	1.16
16:Q:92:HIS:ND1	30:Q:501:DCQ:H3MB	1.61	1.15
15:P:44:ARG:HB3	15:P:45:PRO:HD2	1.36	1.07

There are no symmetry-related clashes.

5.3 Torsion angles [i](#)

5.3.1 Protein backbone [i](#)

In the following table, the Percentiles column shows the percent Ramachandran outliers of the chain as a percentile score with respect to all PDB entries followed by that with respect to all EM entries.

The Analysed column shows the number of residues for which the backbone conformation was analysed, and the total number of residues.

Mol	Chain	Analysed	Favoured	Allowed	Outliers	Percentiles	
1	A	431/433 (100%)	421 (98%)	10 (2%)	0	100	100
2	B	174/176 (99%)	171 (98%)	3 (2%)	0	100	100
3	C	154/156 (99%)	150 (97%)	4 (3%)	0	100	100
4	E	113/115 (98%)	108 (96%)	5 (4%)	0	100	100
5	F	84/86 (98%)	80 (95%)	4 (5%)	0	100	100
6	G	86/88 (98%)	83 (96%)	3 (4%)	0	100	100
7	H	110/112 (98%)	106 (96%)	3 (3%)	1 (1%)	14	22
8	I	93/112 (83%)	87 (94%)	6 (6%)	0	100	100
9	J	340/342 (99%)	326 (96%)	13 (4%)	1 (0%)	36	50
10	K	41/43 (95%)	41 (100%)	0	0	100	100
11	L	123/125 (98%)	121 (98%)	2 (2%)	0	100	100
12	M	688/690 (100%)	669 (97%)	18 (3%)	1 (0%)	48	64
13	N	142/144 (99%)	139 (98%)	3 (2%)	0	100	100
14	O	215/217 (99%)	202 (94%)	13 (6%)	0	100	100
15	P	206/208 (99%)	198 (96%)	7 (3%)	1 (0%)	24	37
16	Q	383/386 (99%)	376 (98%)	7 (2%)	0	100	100
17	T	94/96 (98%)	93 (99%)	1 (1%)	0	100	100
18	W	27/29 (93%)	24 (89%)	3 (11%)	0	100	100
All	All	3504/3558 (98%)	3395 (97%)	105 (3%)	4 (0%)	49	64

All (4) Ramachandran outliers are listed below:

Mol	Chain	Res	Type
15	P	44	ARG

Continued on next page...

Continued from previous page...

Mol	Chain	Res	Type
7	H	77	ILE
12	M	486	GLY
9	J	38	HIS

5.3.2 Protein sidechains ⓘ

In the following table, the Percentiles column shows the percent sidechain outliers of the chain as a percentile score with respect to all PDB entries followed by that with respect to all EM entries.

The Analysed column shows the number of residues for which the sidechain conformation was analysed, and the total number of residues.

Mol	Chain	Analysed	Rotameric	Outliers	Percentiles	
1	A	346/346 (100%)	343 (99%)	3 (1%)	70	85
2	B	151/151 (100%)	150 (99%)	1 (1%)	76	88
3	C	132/132 (100%)	131 (99%)	1 (1%)	73	86
4	E	107/107 (100%)	106 (99%)	1 (1%)	70	85
5	F	75/76 (99%)	73 (97%)	2 (3%)	39	62
6	G	76/81 (94%)	72 (95%)	4 (5%)	20	36
7	H	99/99 (100%)	99 (100%)	0	100	100
8	I	87/97 (90%)	86 (99%)	1 (1%)	65	82
9	J	296/296 (100%)	294 (99%)	2 (1%)	76	88
10	K	42/42 (100%)	40 (95%)	2 (5%)	23	40
11	L	113/113 (100%)	112 (99%)	1 (1%)	70	85
12	M	580/580 (100%)	570 (98%)	10 (2%)	53	74
13	N	130/130 (100%)	128 (98%)	2 (2%)	57	77
14	O	183/183 (100%)	177 (97%)	6 (3%)	33	55
15	P	190/190 (100%)	189 (100%)	1 (0%)	81	91
16	Q	332/332 (100%)	330 (99%)	2 (1%)	78	89
17	T	79/79 (100%)	79 (100%)	0	100	100
18	W	22/24 (92%)	22 (100%)	0	100	100
All	All	3040/3058 (99%)	3001 (99%)	39 (1%)	59	80

5 of 39 residues with a non-rotameric sidechain are listed below:

Mol	Chain	Res	Type
13	N	6	VAL
14	O	235	THR
13	N	72	ASP
14	O	150	GLU
16	Q	217	VAL

Sometimes sidechains can be flipped to improve hydrogen bonding and reduce clashes. 5 of 30 such sidechains are listed below:

Mol	Chain	Res	Type
12	M	669	ASN
16	Q	250	ASN
13	N	123	GLN
17	T	120	GLN
15	P	196	HIS

5.3.3 RNA [i](#)

There are no RNA molecules in this entry.

5.4 Non-standard residues in protein, DNA, RNA chains [i](#)

1 non-standard protein/DNA/RNA residue is modelled in this entry.

In the following table, the Counts columns list the number of bonds (or angles) for which Mogul statistics could be retrieved, the number of bonds (or angles) that are observed in the model and the number of bonds (or angles) that are defined in the Chemical Component Dictionary. The Link column lists molecule types, if any, to which the group is linked. The Z score for a bond length (or angle) is the number of standard deviations the observed value is removed from the expected value. A bond length (or angle) with $|Z| > 2$ is considered an outlier worth inspection. RMSZ is the root-mean-square of all Z scores of the bond lengths (or angles).

Mol	Type	Chain	Res	Link	Bond lengths			Bond angles		
					Counts	RMSZ	# Z > 2	Counts	RMSZ	# Z > 2
16	2MR	Q	118	16	10,12,13	2.03	1 (10%)	5,13,15	6.08	3 (60%)

In the following table, the Chirals column lists the number of chiral outliers, the number of chiral centers analysed, the number of these observed in the model and the number defined in the Chemical Component Dictionary. Similar counts are reported in the Torsion and Rings columns. '-' means no outliers of that kind were identified.

Mol	Type	Chain	Res	Link	Chirals	Torsions	Rings
16	2MR	Q	118	16	-	2/10/13/15	-

All (1) bond length outliers are listed below:

Mol	Chain	Res	Type	Atoms	Z	Observed(Å)	Ideal(Å)
16	Q	118	2MR	CZ-NE	5.73	1.46	1.34

All (3) bond angle outliers are listed below:

Mol	Chain	Res	Type	Atoms	Z	Observed(°)	Ideal(°)
16	Q	118	2MR	NE-CZ-NH2	12.33	130.78	119.48
16	Q	118	2MR	CQ2-NH2-CZ	3.97	132.19	123.65
16	Q	118	2MR	CD-NE-CZ	3.50	129.95	123.36

There are no chirality outliers.

All (2) torsion outliers are listed below:

Mol	Chain	Res	Type	Atoms
16	Q	118	2MR	NE-CD-CG-CB
16	Q	118	2MR	CA-CB-CG-CD

There are no ring outliers.

1 monomer is involved in 1 short contact:

Mol	Chain	Res	Type	Clashes	Symm-Clashes
16	Q	118	2MR	1	0

5.5 Carbohydrates [i](#)

There are no oligosaccharides in this entry.

5.6 Ligand geometry [i](#)

Of 19 ligands modelled in this entry, 2 are monoatomic - leaving 17 for Mogul analysis.

In the following table, the Counts columns list the number of bonds (or angles) for which Mogul statistics could be retrieved, the number of bonds (or angles) that are observed in the model and the number of bonds (or angles) that are defined in the Chemical Component Dictionary. The Link column lists molecule types, if any, to which the group is linked. The Z score for a bond length (or angle) is the number of standard deviations the observed value is removed from the

expected value. A bond length (or angle) with $|Z| > 2$ is considered an outlier worth inspection. RMSZ is the root-mean-square of all Z scores of the bond lengths (or angles).

Mol	Type	Chain	Res	Link	Bond lengths			Bond angles		
					Counts	RMSZ	$\# Z > 2$	Counts	RMSZ	$\# Z > 2$
19	SF4	C	301	3	0,12,12	-	-	-		
19	SF4	B	301	2	0,12,12	-	-	-		
30	DCQ	Q	501	-	23,23,23	1.34	5 (21%)	27,29,29	1.08	2 (7%)
26	NDP	J	401	-	51,52,52	2.39	6 (11%)	71,80,80	1.50	15 (21%)
23	PLX	C	303	-	51,51,51	1.20	4 (7%)	53,59,59	0.61	1 (1%)
19	SF4	B	302	2	0,12,12	-	-	-		
19	SF4	M	801	12	0,12,12	-	-	-		
19	SF4	M	802	12	0,12,12	-	-	-		
25	CDL	I	201	-	49,49,99	1.43	8 (16%)	55,61,111	1.17	5 (9%)
19	SF4	A	501	1	0,12,12	-	-	-		
28	FES	M	803	12	0,4,4	-	-	-		
22	PEE	C	302	-	46,46,50	1.23	6 (13%)	49,51,55	1.00	2 (4%)
20	FMN	A	502	-	33,33,33	1.45	5 (15%)	48,50,50	1.24	7 (14%)
27	UQ	J	402	-	33,33,63	3.52	9 (27%)	42,43,79	2.77	14 (33%)
28	FES	O	301	14	0,4,4	-	-	-		
24	8Q1	E	201	-	32,34,34	1.64	6 (18%)	39,43,43	1.51	6 (15%)
21	NAI	A	503	-	47,48,48	3.99	22 (46%)	64,73,73	1.70	11 (17%)

In the following table, the Chirals column lists the number of chiral outliers, the number of chiral centers analysed, the number of these observed in the model and the number defined in the Chemical Component Dictionary. Similar counts are reported in the Torsion and Rings columns. '-' means no outliers of that kind were identified.

Mol	Type	Chain	Res	Link	Chirals	Torsions	Rings
19	SF4	B	301	2	-	-	0/6/5/5
30	DCQ	Q	501	-	-	4/14/38/38	0/1/1/1
19	SF4	C	301	3	-	-	0/6/5/5
26	NDP	J	401	-	-	6/34/77/77	0/5/5/5
23	PLX	C	303	-	-	29/55/55/55	-
19	SF4	B	302	2	-	-	0/6/5/5
25	CDL	I	201	-	-	29/60/60/110	-
19	SF4	M	801	12	-	-	0/6/5/5
19	SF4	M	802	12	-	-	0/6/5/5
19	SF4	A	501	1	-	-	0/6/5/5
28	FES	M	803	12	-	-	0/1/1/1
22	PEE	C	302	-	-	27/50/50/54	-
20	FMN	A	502	-	-	1/18/18/18	0/3/3/3

Continued on next page...

Continued from previous page...

Mol	Type	Chain	Res	Link	Chirals	Torsions	Rings
27	UQ	J	402	-	-	14/27/51/87	0/1/1/1
28	FES	O	301	14	-	-	0/1/1/1
24	8Q1	E	201	-	-	10/41/41/41	-
21	NAI	A	503	-	-	5/29/72/72	0/5/5/5

The worst 5 of 71 bond length outliers are listed below:

Mol	Chain	Res	Type	Atoms	Z	Observed(Å)	Ideal(Å)
26	J	401	NDP	P2B-O2B	13.69	1.83	1.59
21	A	503	NAI	C3D-C4D	-10.38	1.26	1.53
27	J	402	UQ	C18-C19	9.96	1.56	1.33
27	J	402	UQ	C13-C14	9.61	1.55	1.33
21	A	503	NAI	O4B-C1B	9.41	1.63	1.42

The worst 5 of 63 bond angle outliers are listed below:

Mol	Chain	Res	Type	Atoms	Z	Observed(°)	Ideal(°)
27	J	402	UQ	C7-C8-C9	-8.13	112.83	126.83
27	J	402	UQ	C12-C13-C14	-6.48	112.79	127.62
27	J	402	UQ	C17-C18-C19	-6.46	112.84	127.62
21	A	503	NAI	C5A-C4A-N3A	-5.55	119.07	126.72
24	E	201	8Q1	C6-C1-S44	5.30	119.72	113.40

There are no chirality outliers.

5 of 125 torsion outliers are listed below:

Mol	Chain	Res	Type	Atoms
22	C	302	PEE	C1-O3P-P-O1P
22	C	302	PEE	C4-O4P-P-O2P
22	C	302	PEE	C4-O4P-P-O1P
23	C	303	PLX	O6-C4-C5-O8
23	C	303	PLX	C2-O1-P1-O4

There are no ring outliers.

11 monomers are involved in 40 short contacts:

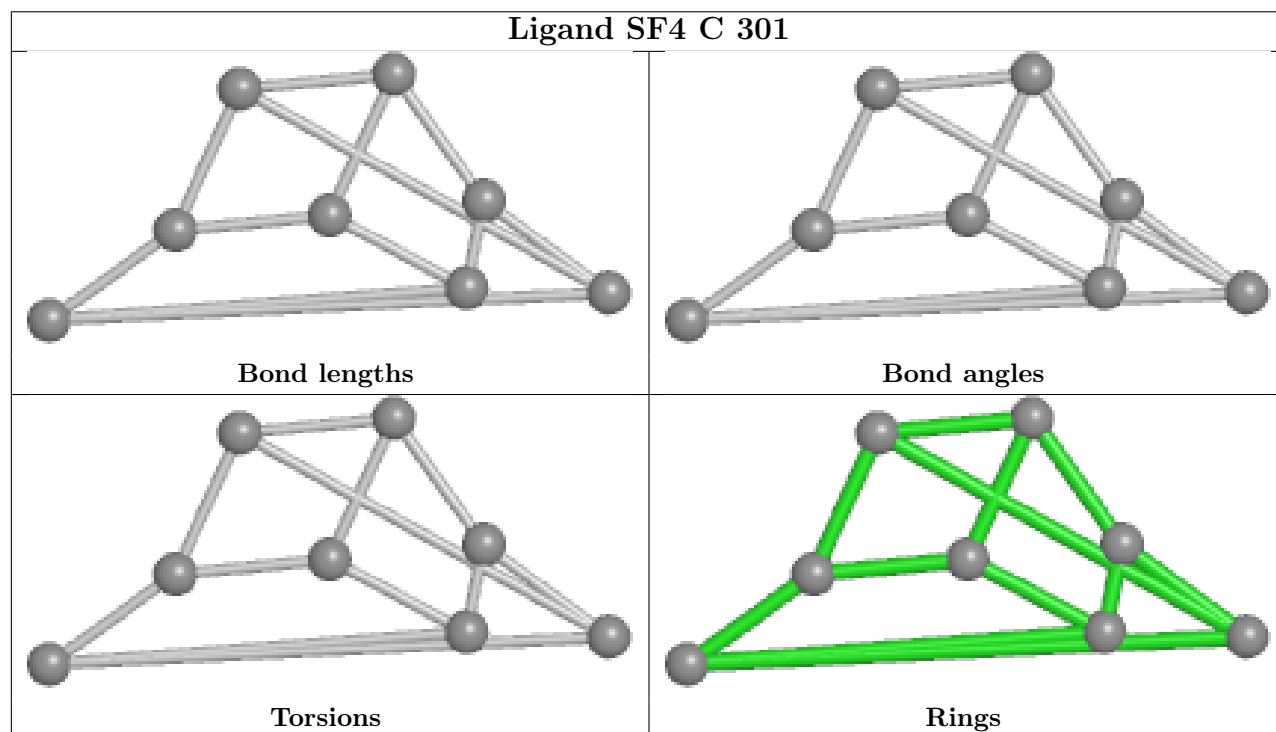
Mol	Chain	Res	Type	Clashes	Symm-Clashes
19	C	301	SF4	2	0
30	Q	501	DCQ	7	0
23	C	303	PLX	2	0

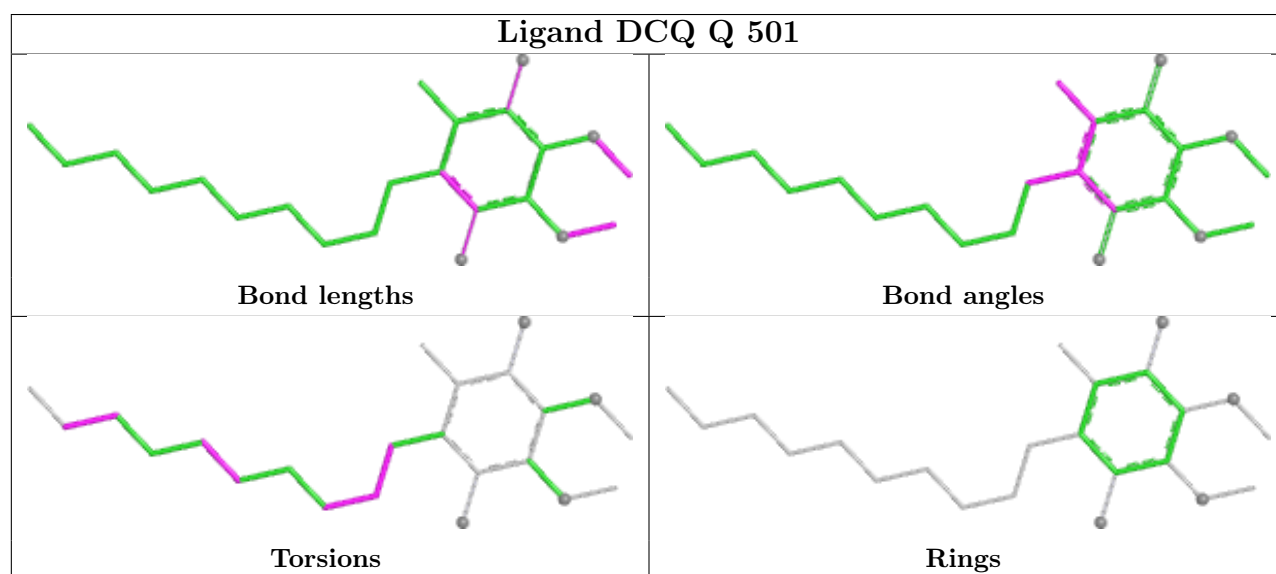
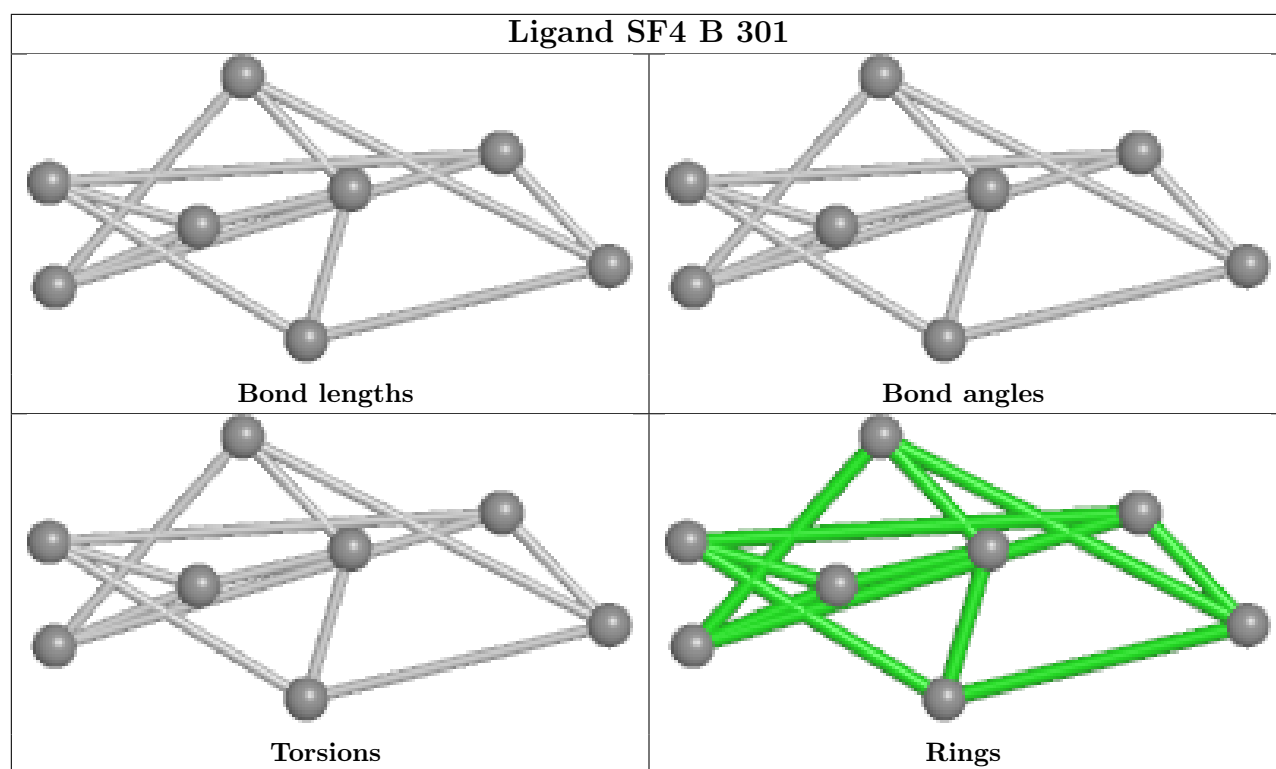
Continued on next page...

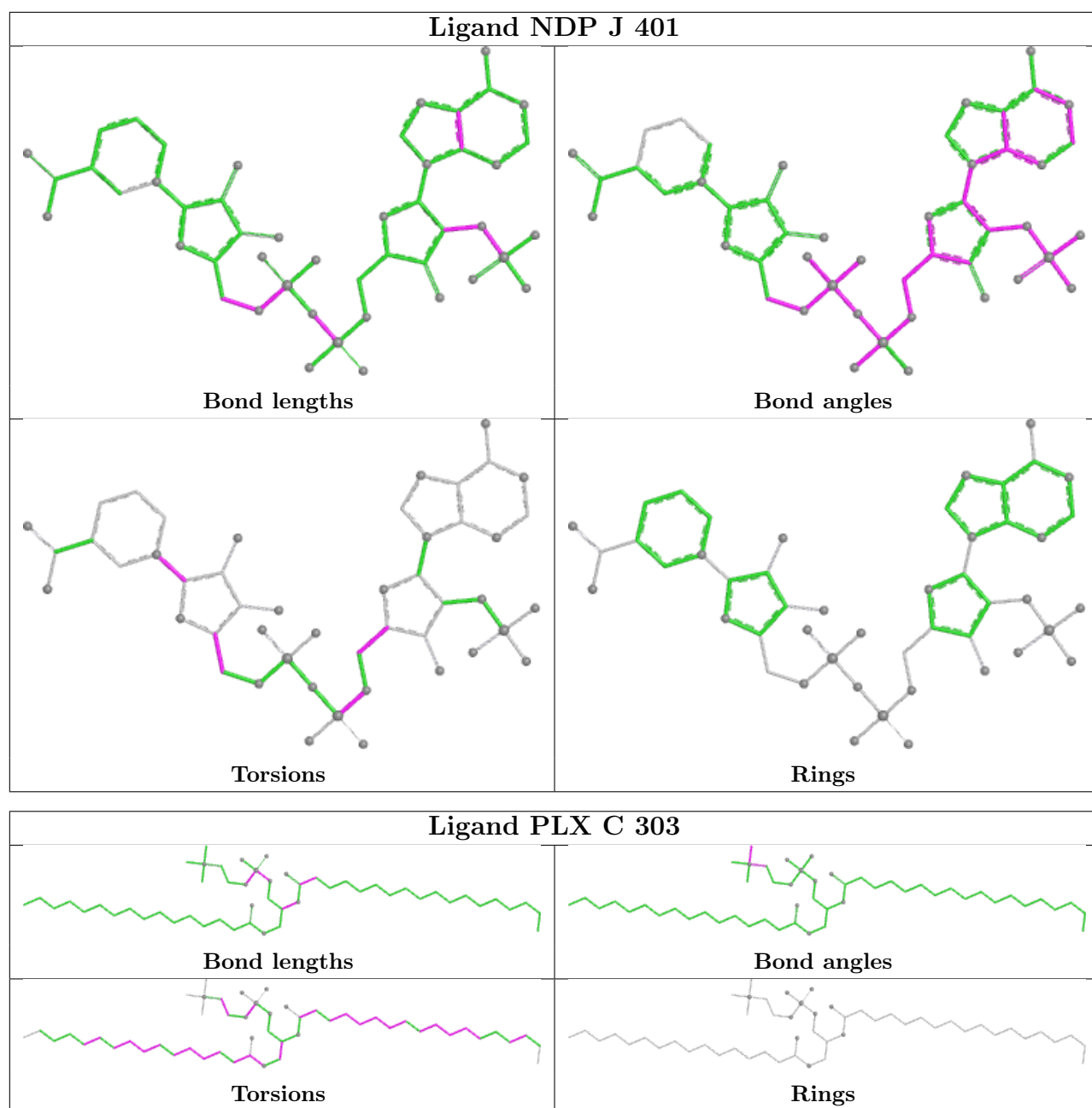
Continued from previous page...

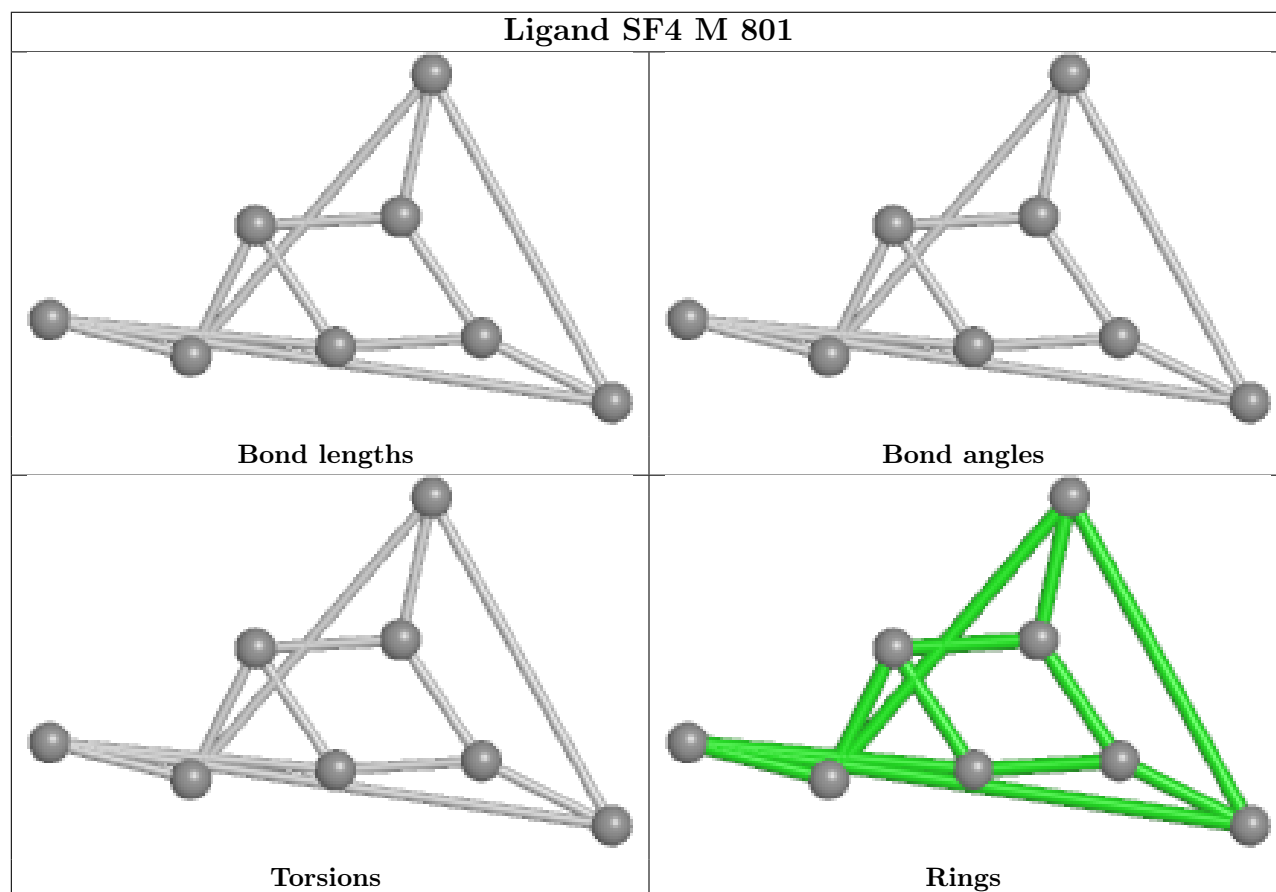
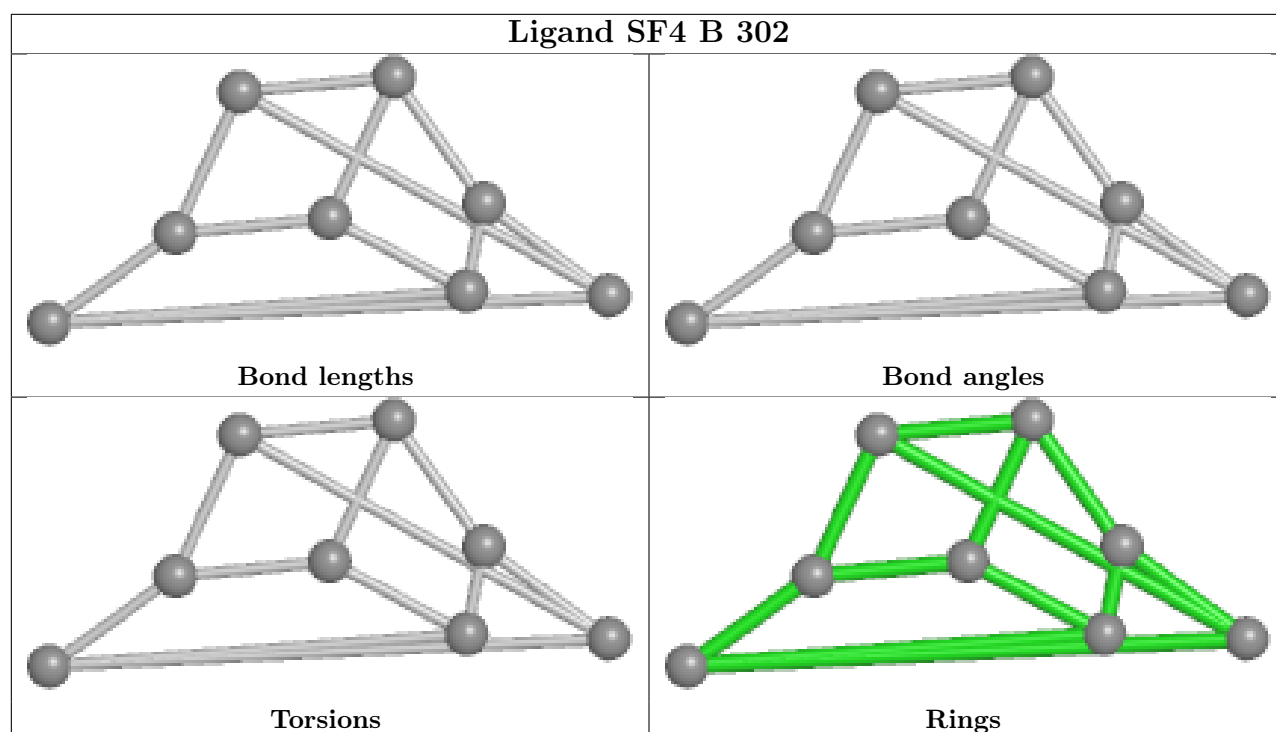
Mol	Chain	Res	Type	Clashes	Symm-Clashes
19	M	802	SF4	4	0
25	I	201	CDL	2	0
19	A	501	SF4	1	0
22	C	302	PEE	5	0
20	A	502	FMN	1	0
27	J	402	UQ	7	0
24	E	201	8Q1	5	0
21	A	503	NAI	5	0

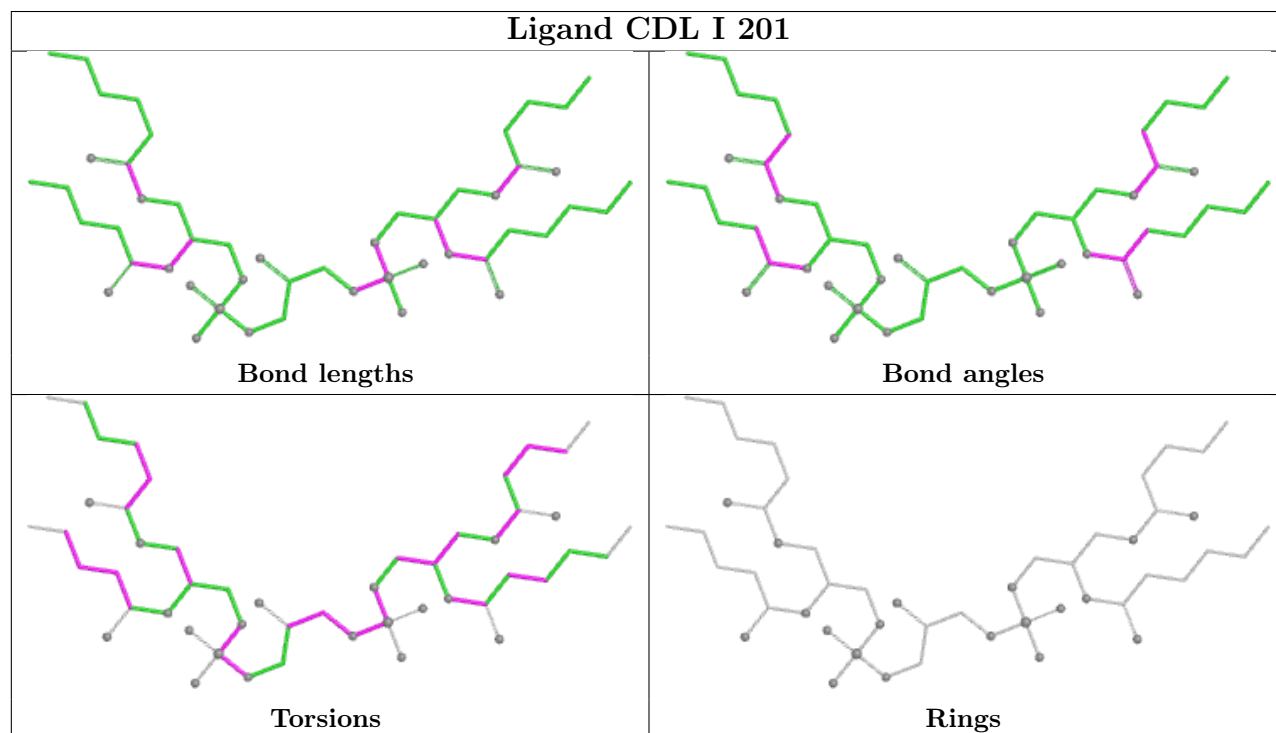
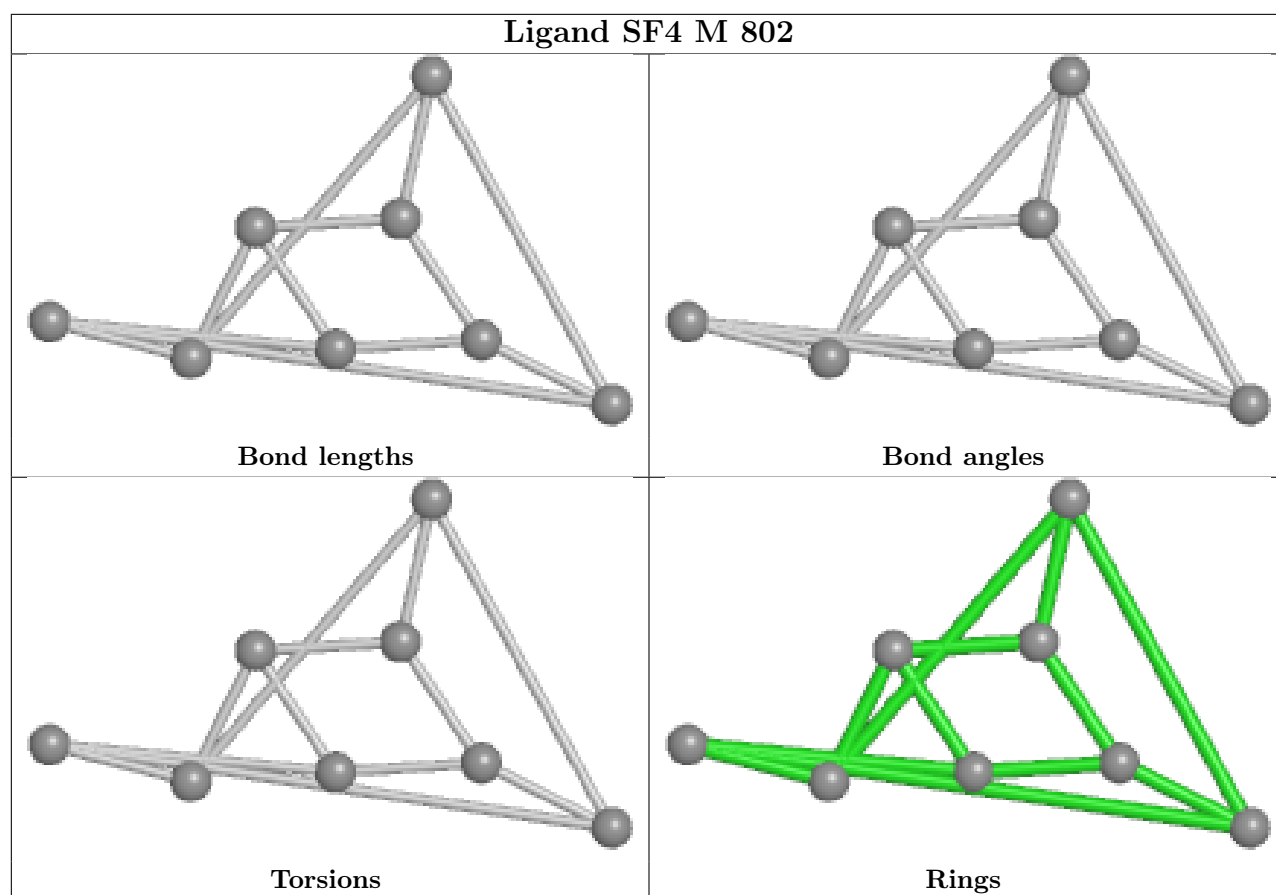
The following is a two-dimensional graphical depiction of Mogul quality analysis of bond lengths, bond angles, torsion angles, and ring geometry for all instances of the Ligand of Interest. In addition, ligands with molecular weight > 250 and outliers as shown on the validation Tables will also be included. For torsion angles, if less than 5% of the Mogul distribution of torsion angles is within 10 degrees of the torsion angle in question, then that torsion angle is considered an outlier. Any bond that is central to one or more torsion angles identified as an outlier by Mogul will be highlighted in the graph. For rings, the root-mean-square deviation (RMSD) between the ring in question and similar rings identified by Mogul is calculated over all ring torsion angles. If the average RMSD is greater than 60 degrees and the minimal RMSD between the ring in question and any Mogul-identified rings is also greater than 60 degrees, then that ring is considered an outlier. The outliers are highlighted in purple. The color gray indicates Mogul did not find sufficient equivalents in the CSD to analyse the geometry.

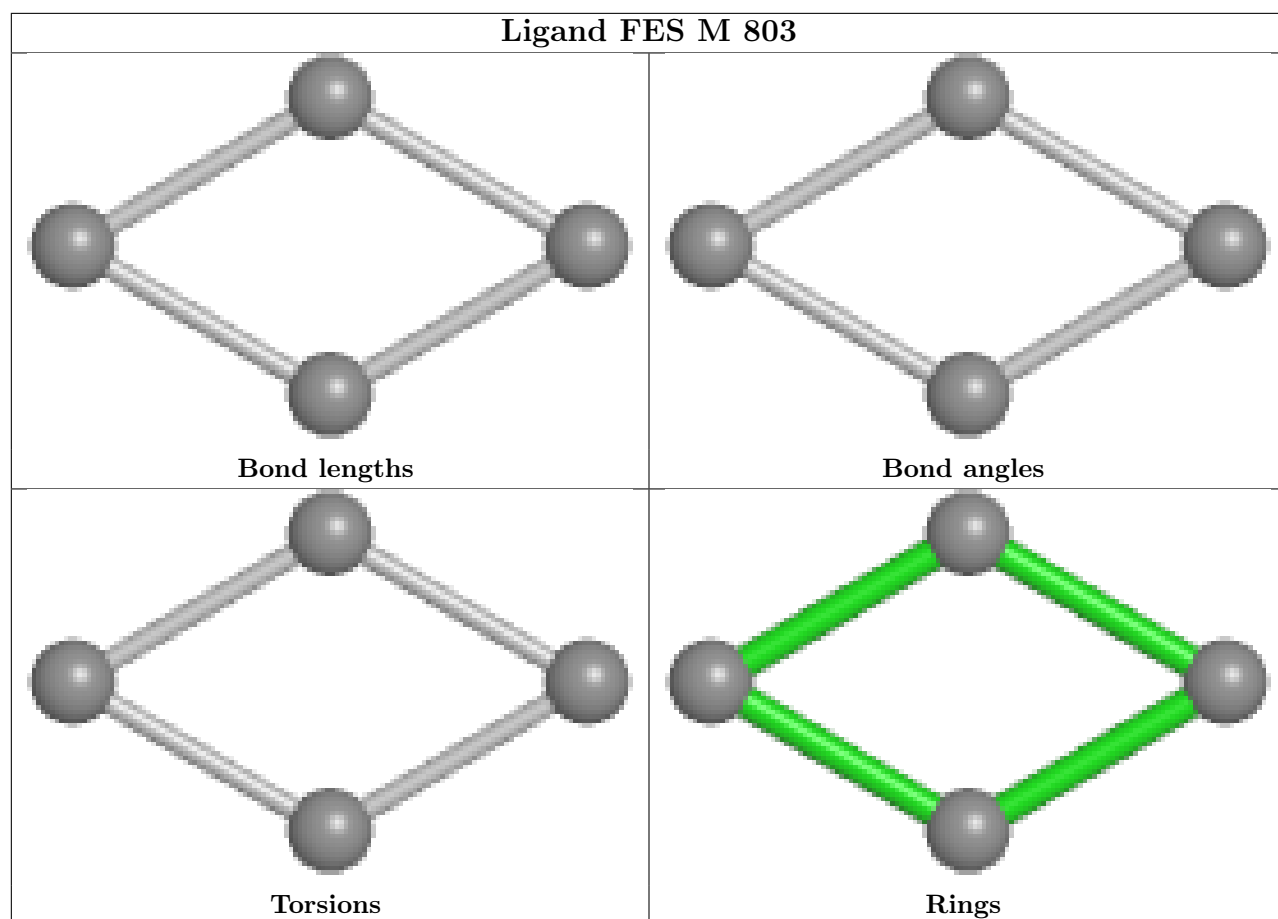
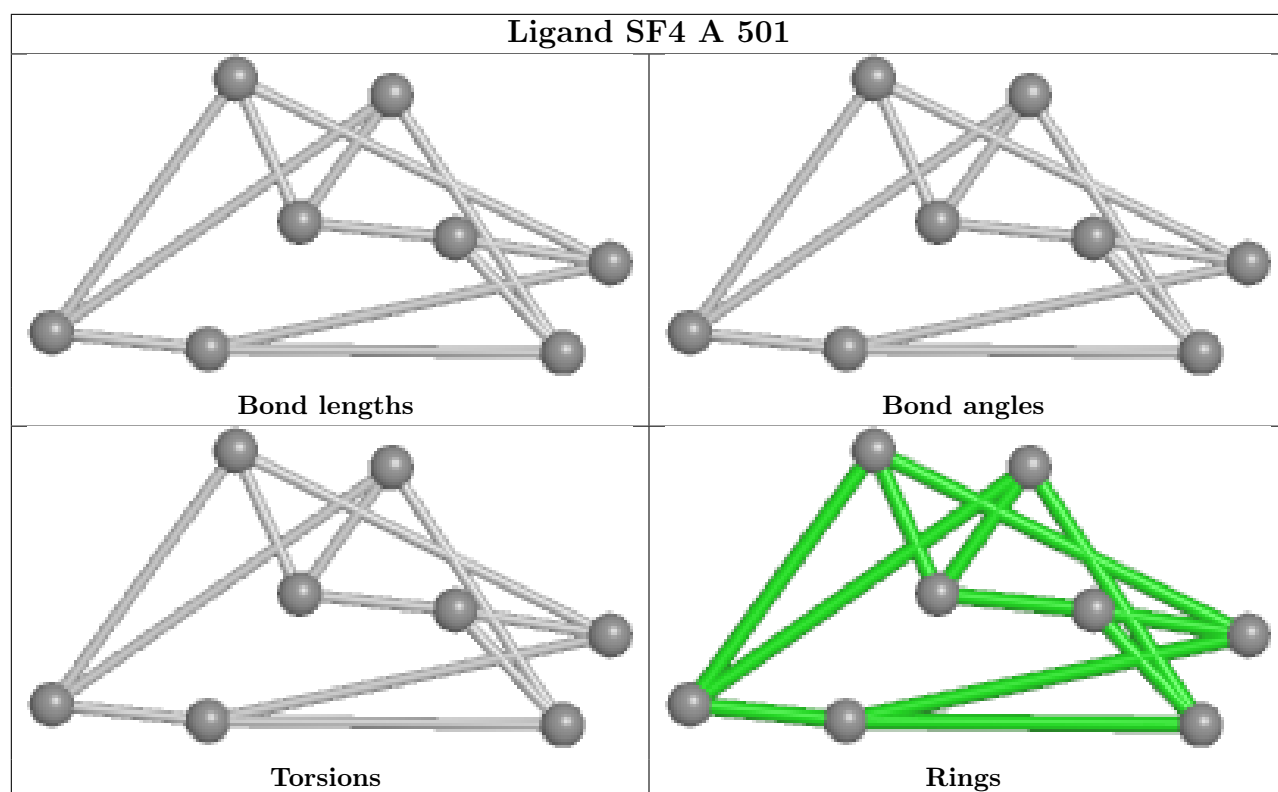


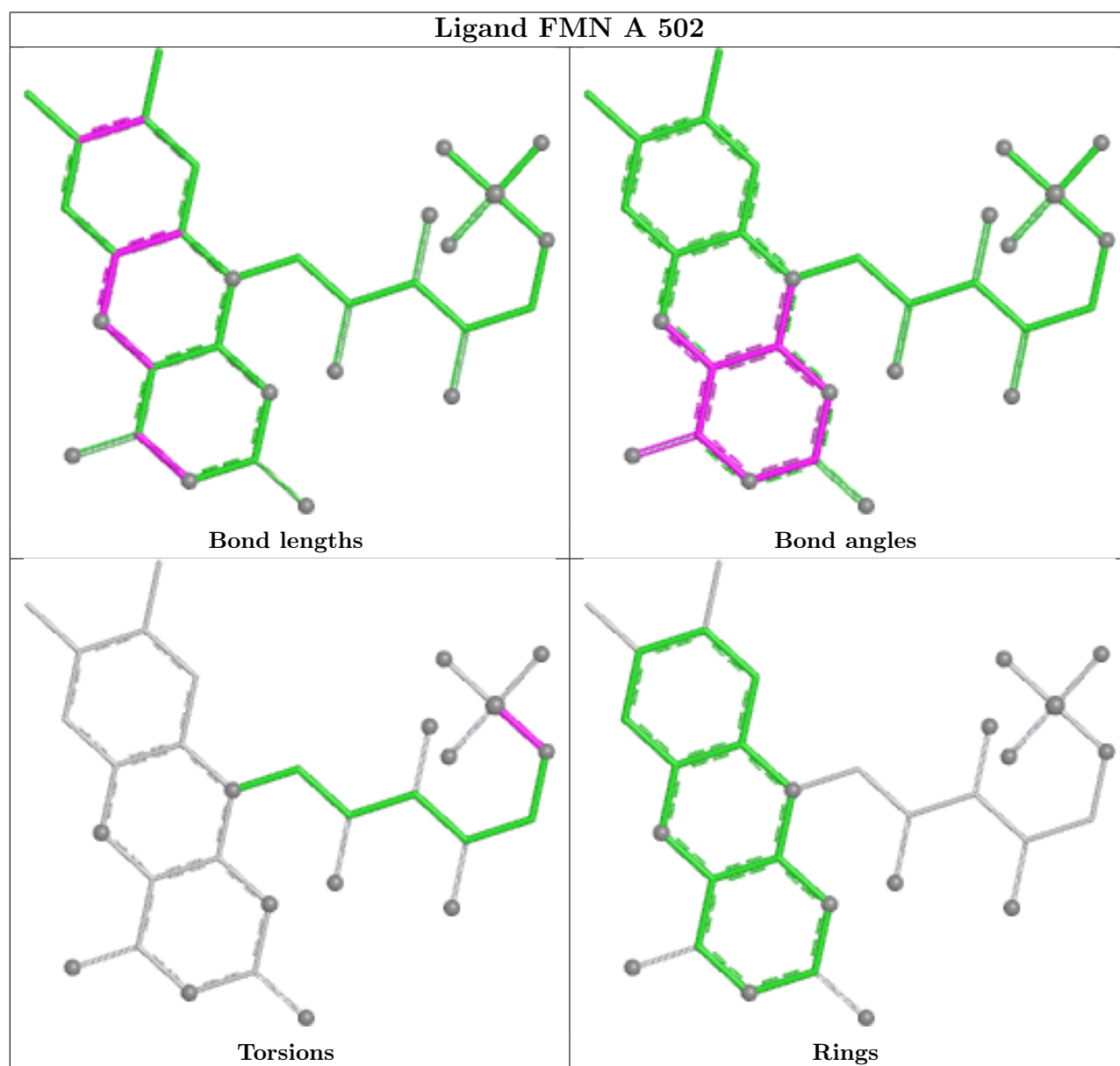
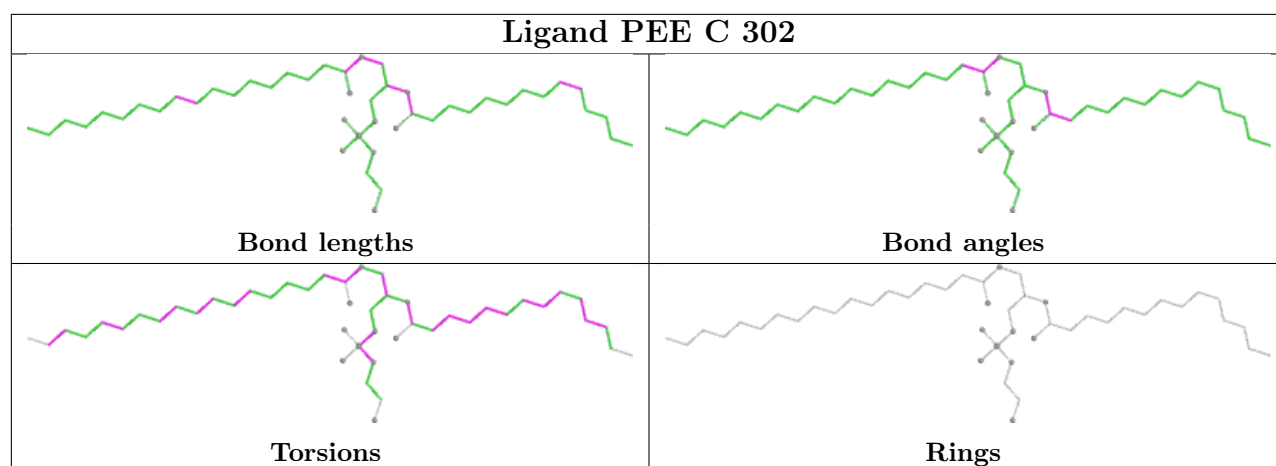


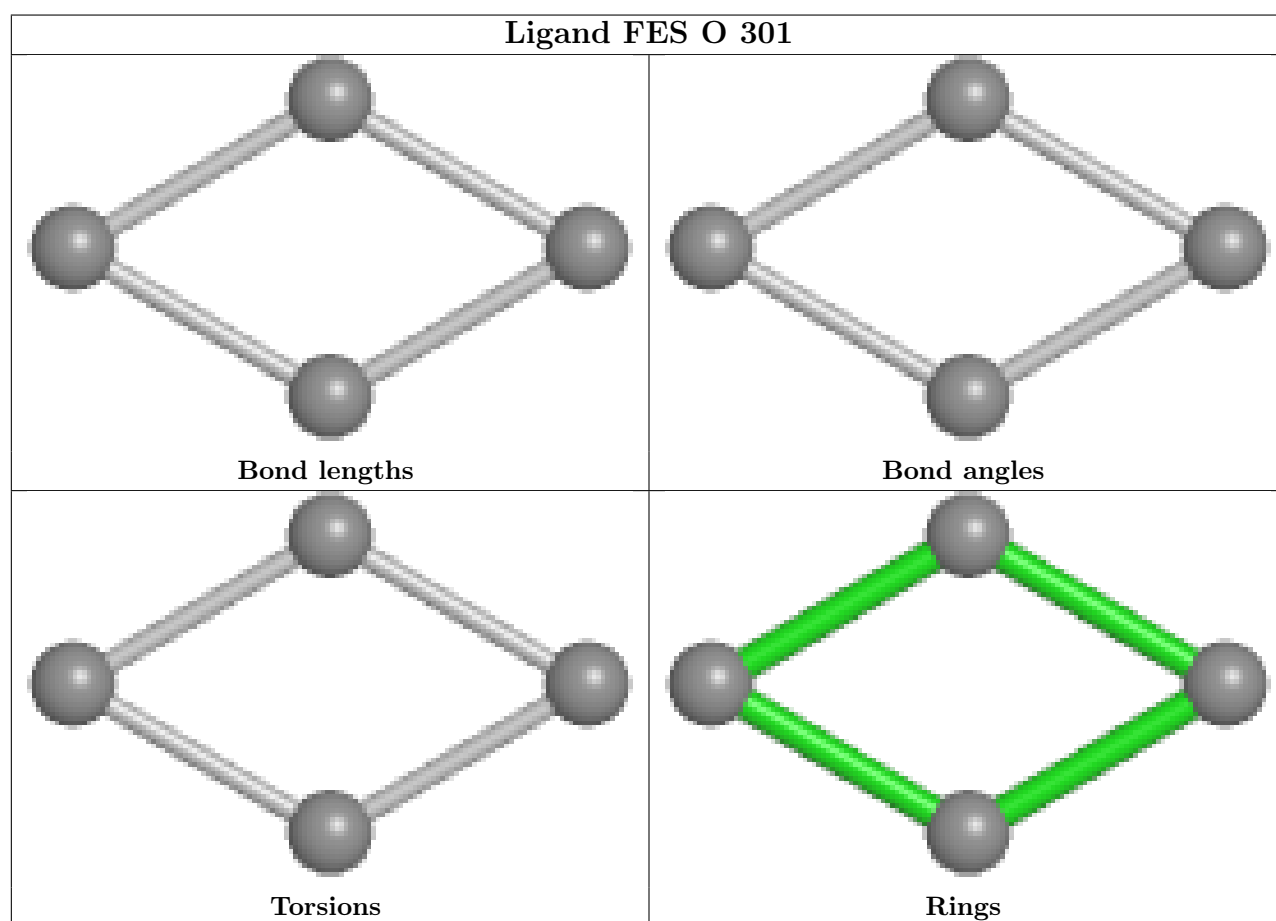
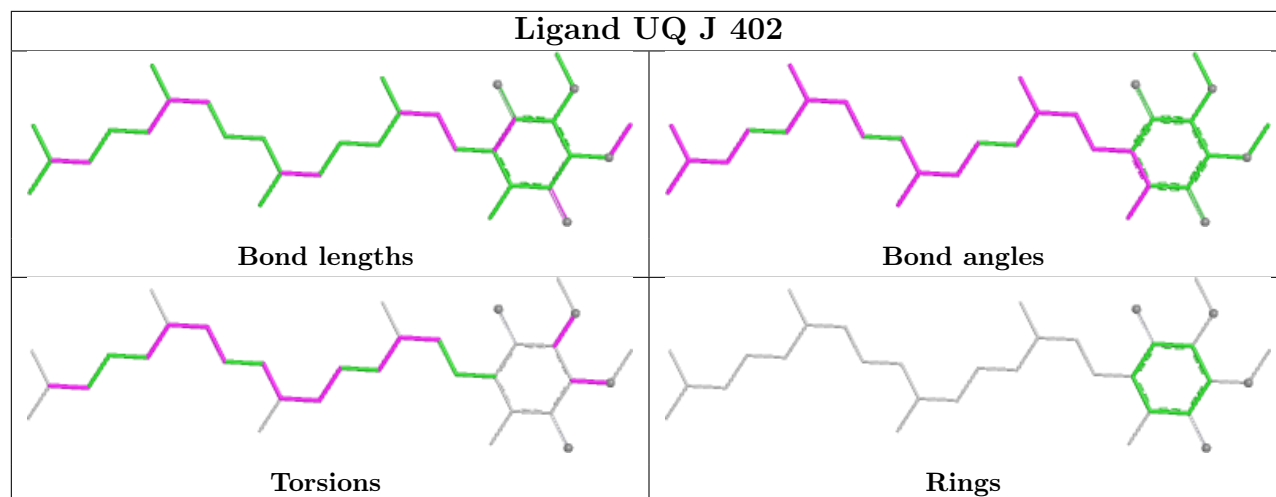


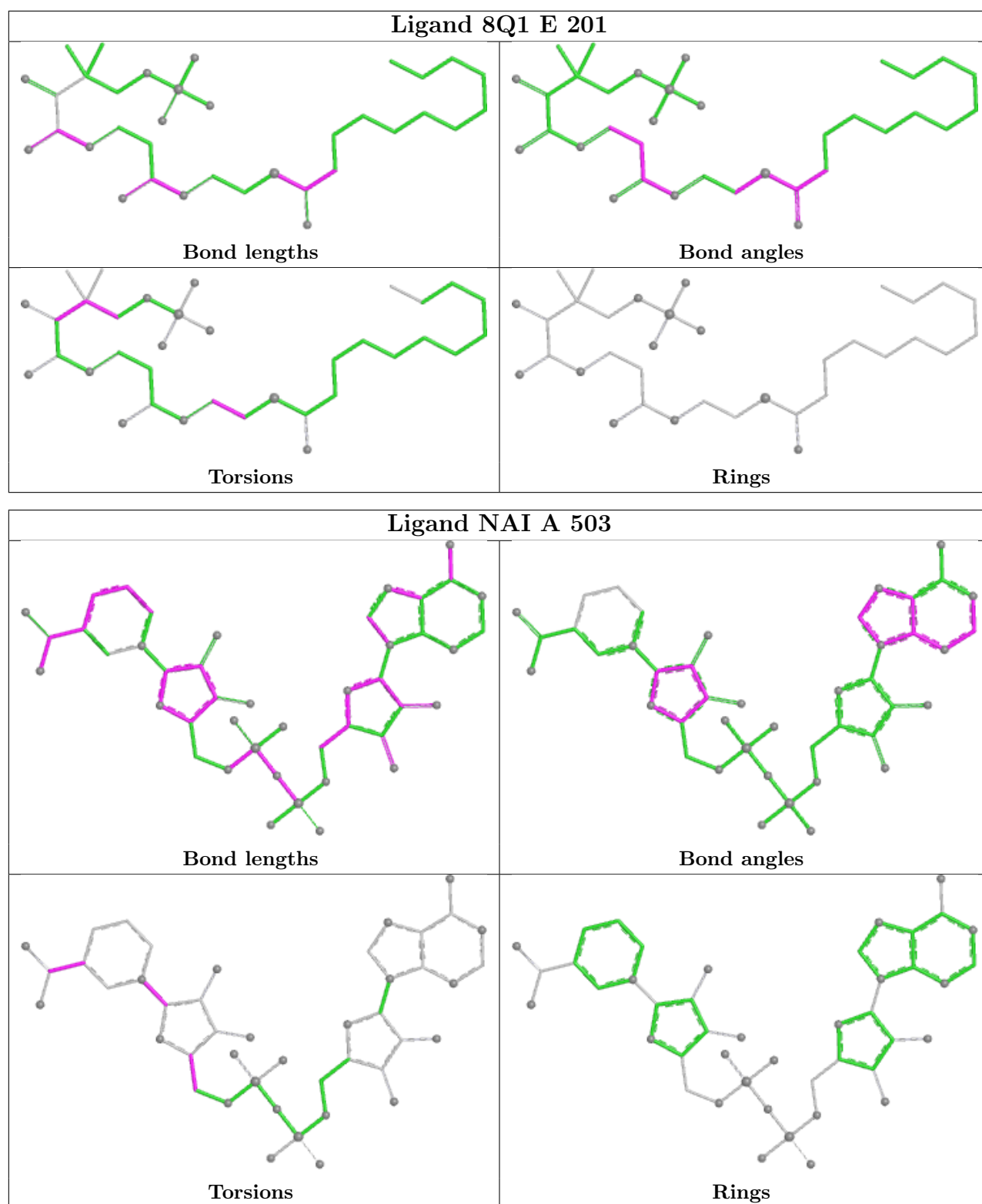












5.7 Other polymers ⓘ

There are no such residues in this entry.

5.8 Polymer linkage issues ⓘ

There are no chain breaks in this entry.

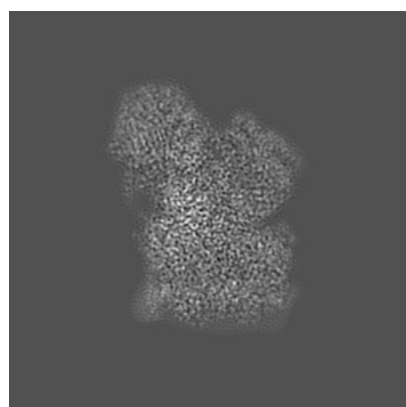
6 Map visualisation [i](#)

This section contains visualisations of the EMDB entry EMD-31874. These allow visual inspection of the internal detail of the map and identification of artifacts.

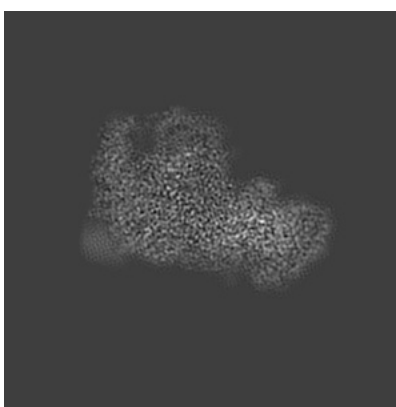
No raw map or half-maps were deposited for this entry and therefore no images, graphs, etc. pertaining to the raw map can be shown.

6.1 Orthogonal projections [i](#)

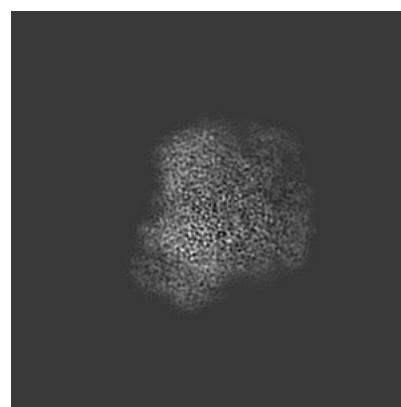
6.1.1 Primary map



X



Y

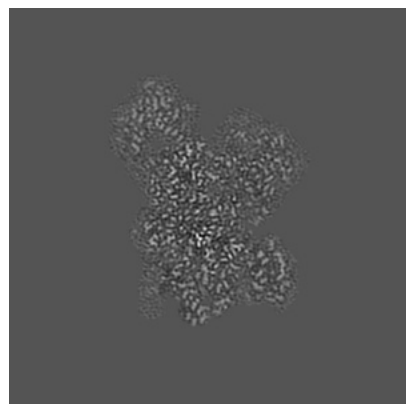


Z

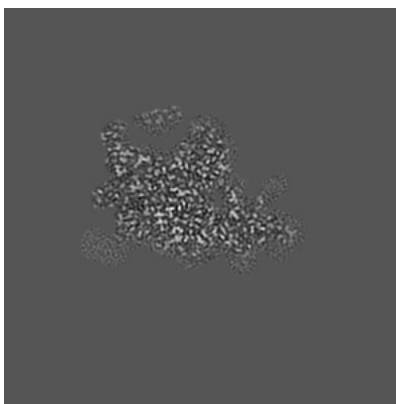
The images above show the map projected in three orthogonal directions.

6.2 Central slices [i](#)

6.2.1 Primary map



X Index: 240



Y Index: 240

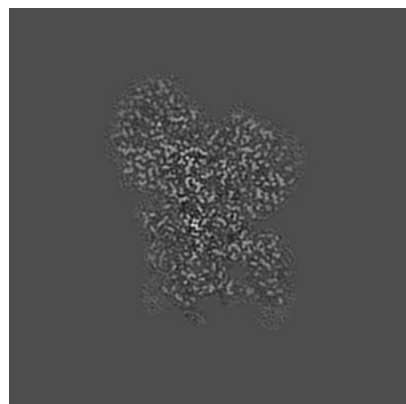


Z Index: 240

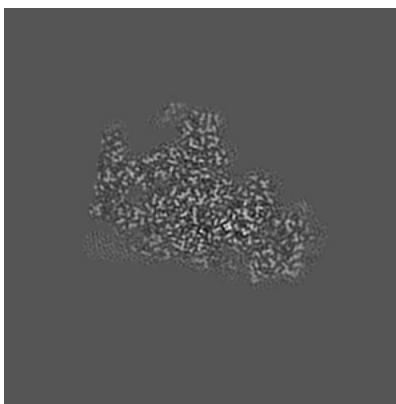
The images above show central slices of the map in three orthogonal directions.

6.3 Largest variance slices [i](#)

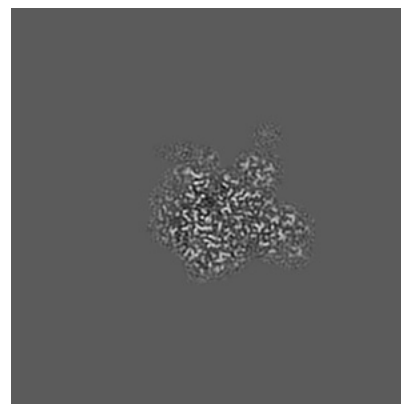
6.3.1 Primary map



X Index: 227



Y Index: 216

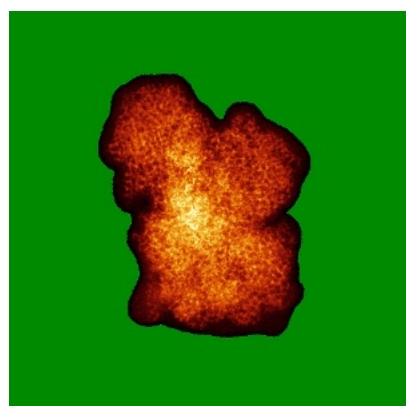


Z Index: 228

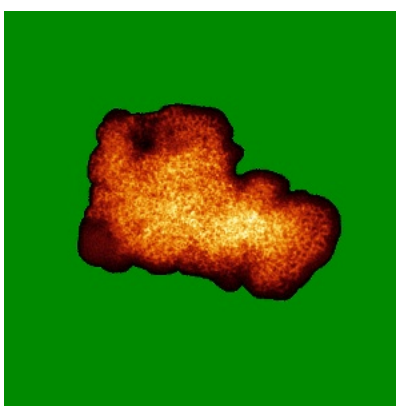
The images above show the largest variance slices of the map in three orthogonal directions.

6.4 Orthogonal standard-deviation projections (False-color) [i](#)

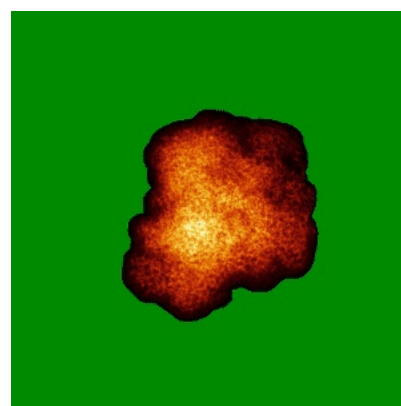
6.4.1 Primary map



X



Y

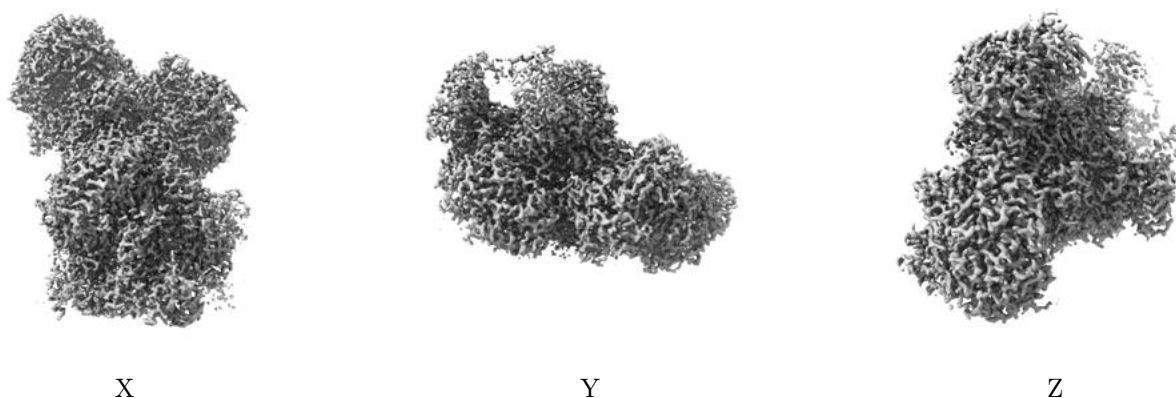


Z

The images above show the map standard deviation projections with false color in three orthogonal directions. Minimum values are shown in green, max in blue, and dark to light orange shades represent small to large values respectively.

6.5 Orthogonal surface views [i](#)

6.5.1 Primary map



The images above show the 3D surface view of the map at the recommended contour level 0.0167. These images, in conjunction with the slice images, may facilitate assessment of whether an appropriate contour level has been provided.

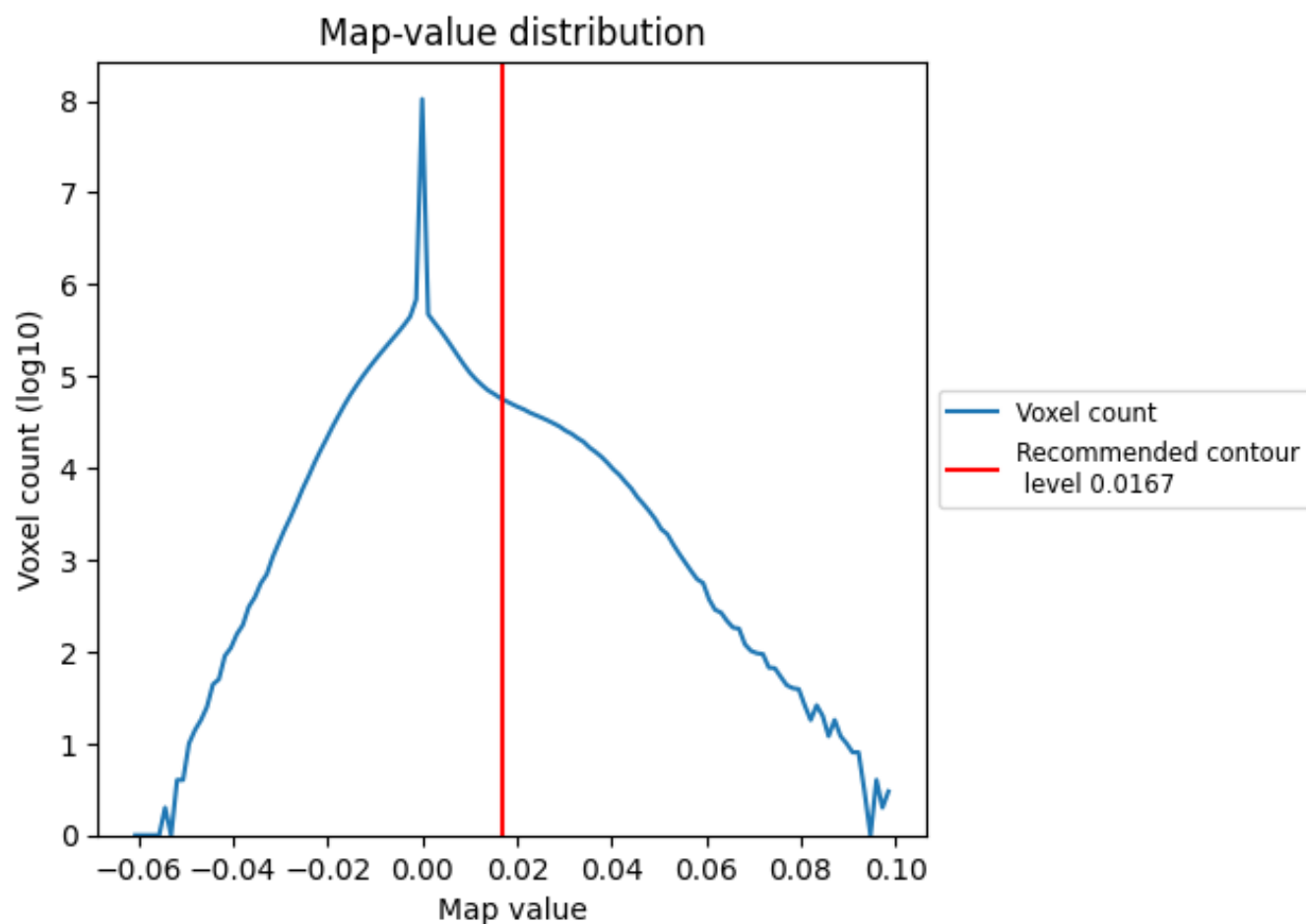
6.6 Mask visualisation [i](#)

This section was not generated. No masks/segmentation were deposited.

7 Map analysis [i](#)

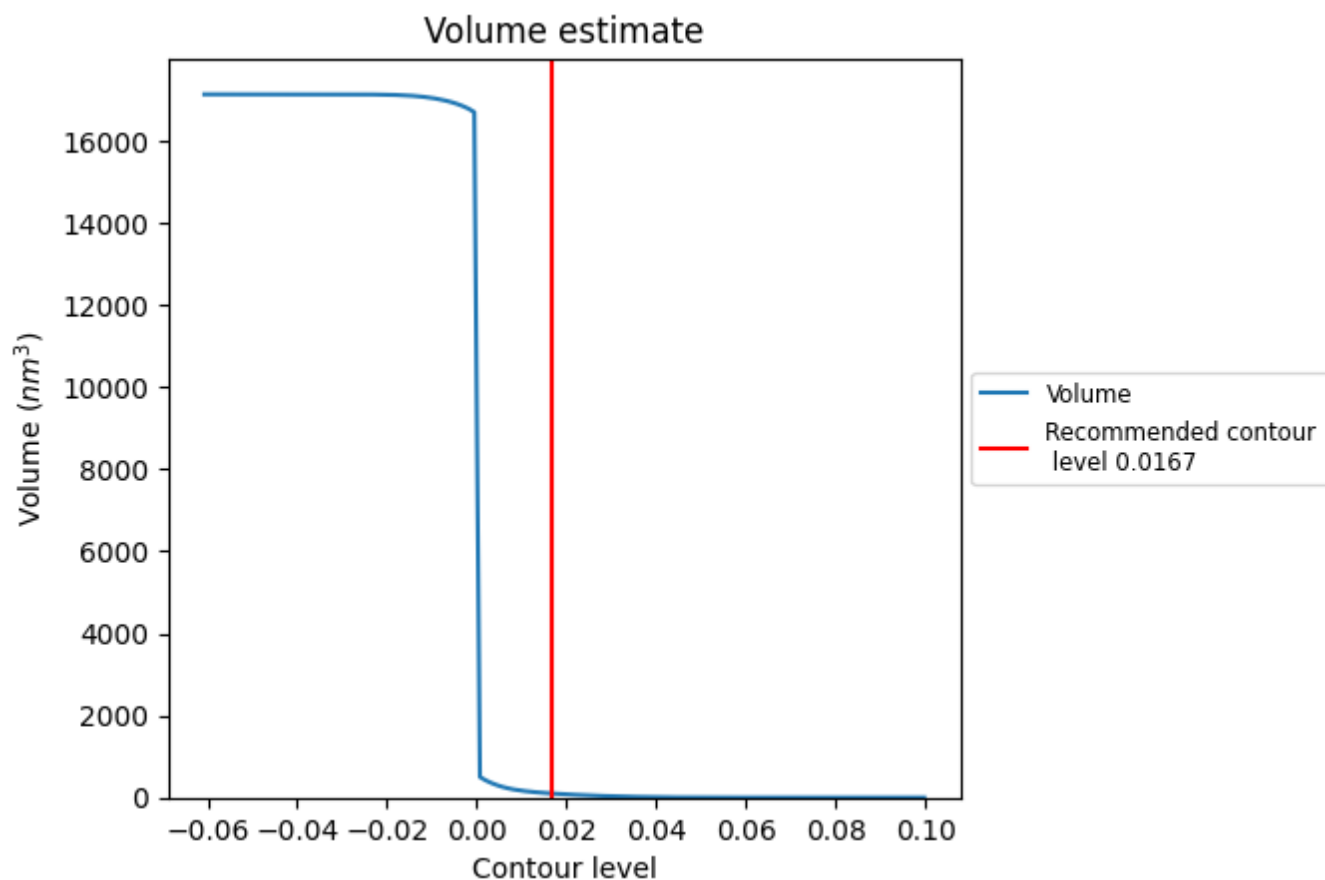
This section contains the results of statistical analysis of the map.

7.1 Map-value distribution [i](#)



The map-value distribution is plotted in 128 intervals along the x-axis. The y-axis is logarithmic. A spike in this graph at zero usually indicates that the volume has been masked.

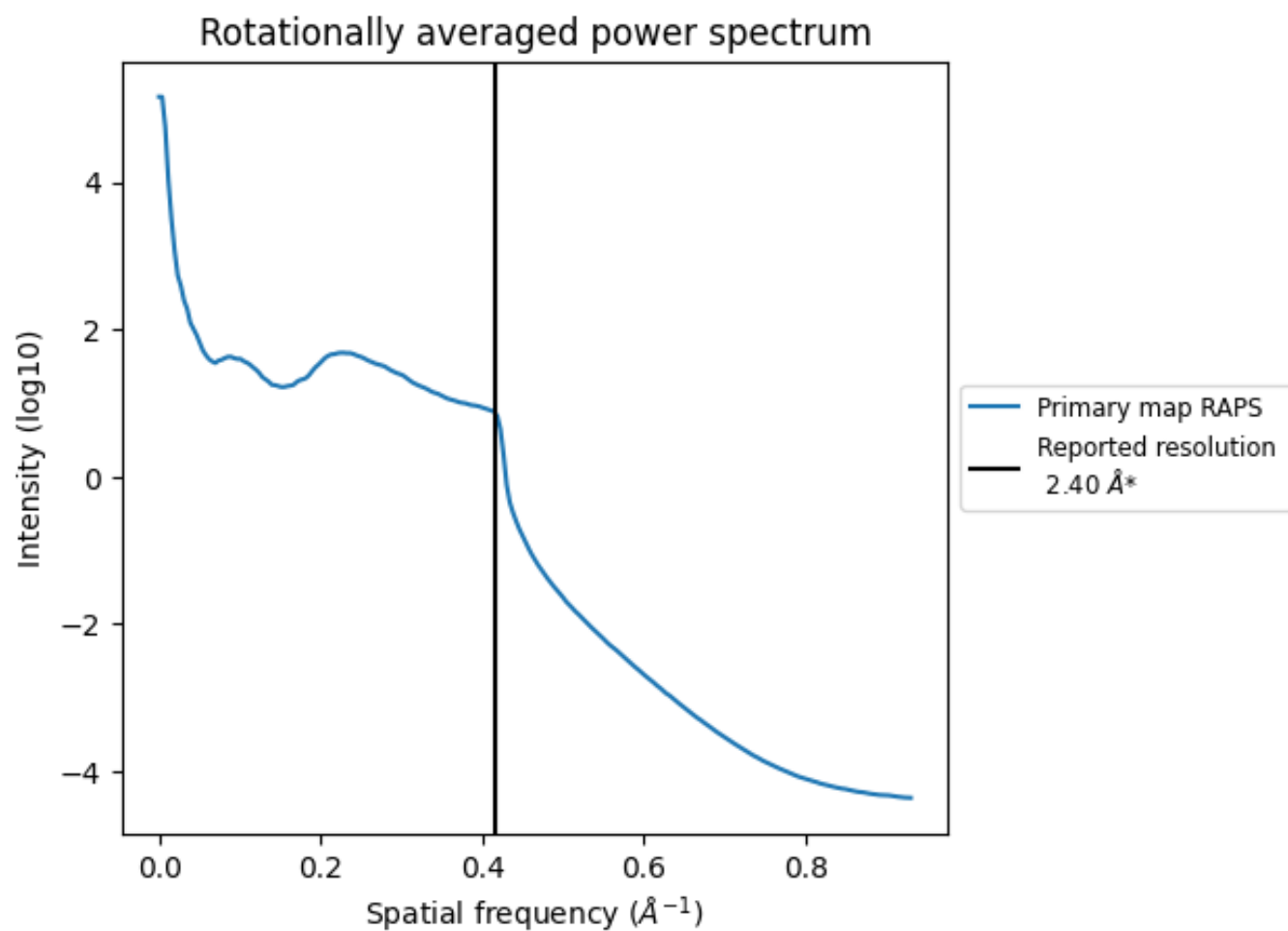
7.2 Volume estimate [i](#)



The volume at the recommended contour level is 100 nm³; this corresponds to an approximate mass of 90 kDa.

The volume estimate graph shows how the enclosed volume varies with the contour level. The recommended contour level is shown as a vertical line and the intersection between the line and the curve gives the volume of the enclosed surface at the given level.

7.3 Rotationally averaged power spectrum ⓘ



*Reported resolution corresponds to spatial frequency of 0.417 Å⁻¹

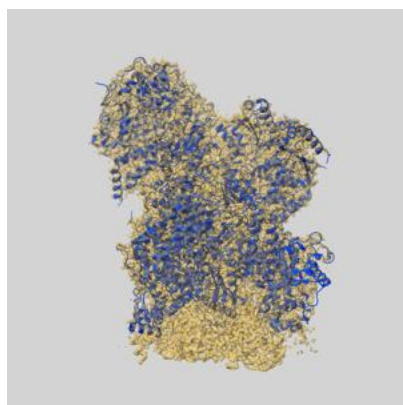
8 Fourier-Shell correlation

This section was not generated. No FSC curve or half-maps provided.

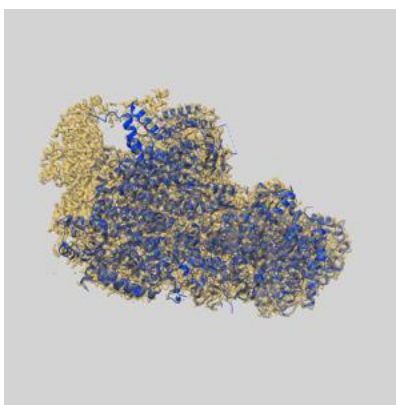
9 Map-model fit [i](#)

This section contains information regarding the fit between EMDB map EMD-31874 and PDB model 7VB7. Per-residue inclusion information can be found in [section 3](#) on [page 15](#).

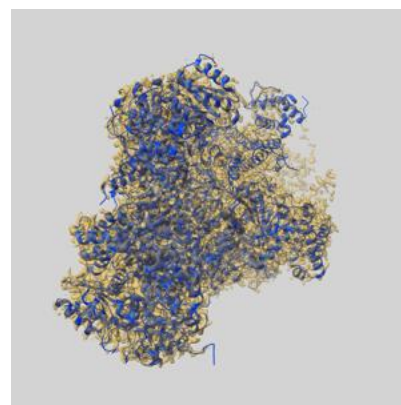
9.1 Map-model overlay [i](#)



X



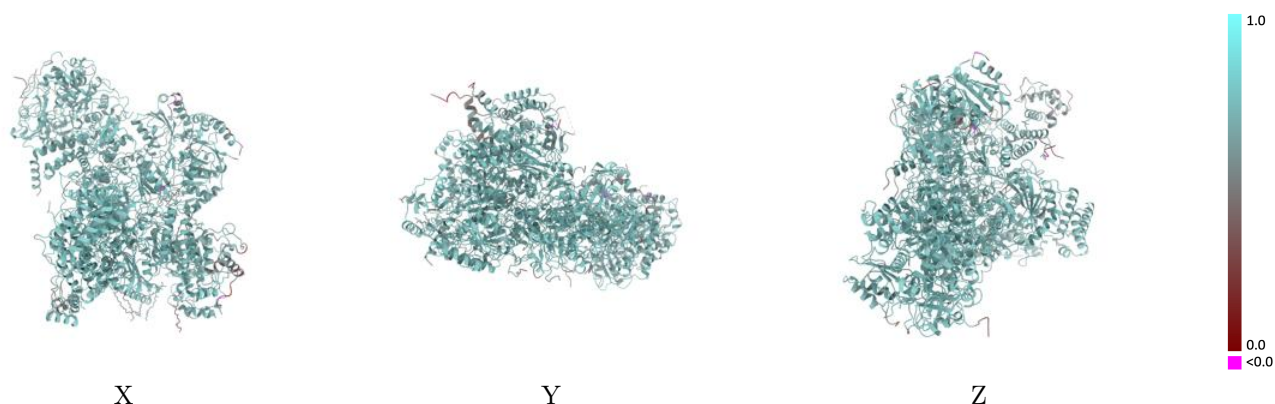
Y



Z

The images above show the 3D surface view of the map at the recommended contour level 0.0167 at 50% transparency in yellow overlaid with a ribbon representation of the model coloured in blue. These images allow for the visual assessment of the quality of fit between the atomic model and the map.

9.2 Q-score mapped to coordinate model [i](#)

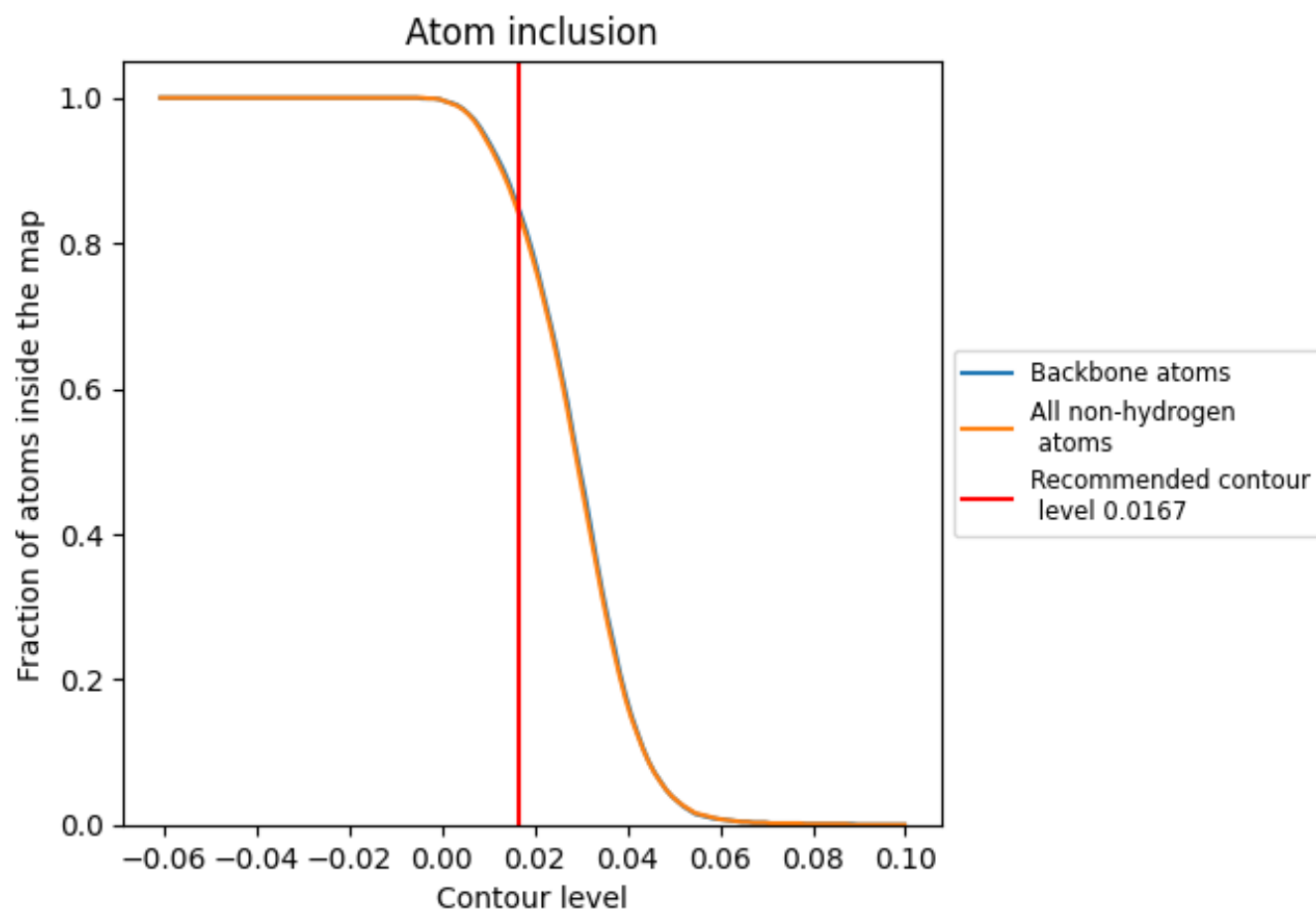


The images above show the model with each residue coloured according to its Q-score. This shows their resolvability in the map with higher Q-score values reflecting better resolvability. Please note: Q-score is calculating the resolvability of atoms, and thus high values are only expected at resolutions at which atoms can be resolved. Low Q-score values may therefore be expected for many entries.

9.3 Atom inclusion mapped to coordinate model [i](#)

This section was not generated.







































9.4 Atom inclusion [i](#)



At the recommended contour level, 84% of all backbone atoms, 84% of all non-hydrogen atoms, are inside the map.

9.5 Map-model fit summary

The table lists the average atom inclusion at the recommended contour level (0.0167) and Q-score for the entire model and for each chain.

Chain	Atom inclusion	Q-score
All	 0.8380	 0.6930
A	 0.8770	 0.6960
B	 0.9190	 0.7220
C	 0.8870	 0.7130
E	 0.8170	 0.6860
F	 0.6920	 0.6440
G	 0.3410	 0.5290
H	 0.8200	 0.6860
I	 0.6150	 0.6420
J	 0.8470	 0.6930
K	 0.7300	 0.6480
L	 0.8720	 0.7010
M	 0.8850	 0.7040
N	 0.6440	 0.6650
O	 0.8050	 0.6800
P	 0.9430	 0.7230
Q	 0.9510	 0.7270
T	 0.7530	 0.6850
W	 0.6780	 0.6540

