



wwPDB EM Validation Summary Report ⓘ

Mar 9, 2026 – 06:39 AM UTC

PDB ID : 5UP2 / pdb_00005up2
EMDB ID : EMD-8581
Title : Triheteromeric NMDA receptor GluN1/GluN2A/GluN2B in complex with glycine, glutamate, Ro 25-6981, MK-801 and a GluN2B-specific Fab, at pH 6.5
Authors : Lu, W.; Du, J.; Goehring, A.; Gouaux, E.
Deposited on : 2017-02-01
Resolution : 6.00 Å(reported)

This is a wwPDB EM Validation Summary Report for a publicly released PDB entry.

We welcome your comments at validation@mail.wwpdb.org

A user guide is available at

<https://www.wwpdb.org/validation/2017/EMValidationReportHelp>
with specific help available everywhere you see the ⓘ symbol.

The types of validation reports are described at

<http://www.wwpdb.org/validation/2017/FAQs#types>.

The following versions of software and data (see [references ⓘ](#)) were used in the production of this report:

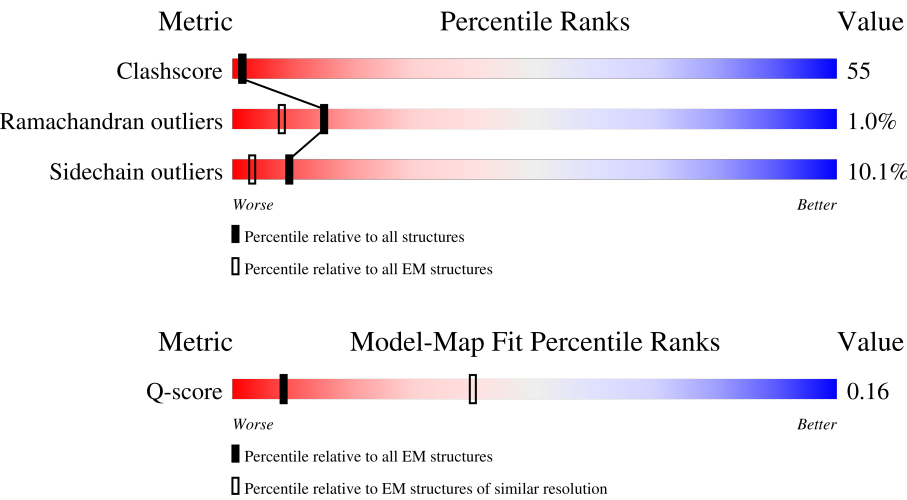
EMDB validation analysis : 0.0.1.dev132
Mogul : 2022.3.0, CSD as543be (2022)
MolProbity : 4-5-2 with Phenix2.0
Percentile statistics : 20250101.v01 (using entries in the PDB archive January 1st 2025)
EM percentile statistics : 202505.v01 (Using data in the EMDb archive up until May 2025)
MapQ : 1.9.13
Ideal geometry (proteins) : Engh & Huber (2001)
Ideal geometry (DNA, RNA) : Parkinson et al. (1996)
Validation Pipeline (wwPDB-VP) : 2.49

1 Overall quality at a glance i

The following experimental techniques were used to determine the structure:
ELECTRON MICROSCOPY

The reported resolution of this entry is 6.00 Å.

Percentile scores (ranging between 0-100) for global validation metrics of the entry are shown in the following graphic. The table shows the number of entries on which the scores are based.



Metric	Whole archive (#Entries)	EM structures (#Entries)	Similar EM resolution (#Entries, resolution range(Å))
Clashscore	229148	23984	-
Ramachandran outliers	224038	23583	-
Sidechain outliers	223484	23102	-
Q-score	-	25397	525 (5.50 - 6.50)

The table below summarises the geometric issues observed across the polymeric chains and their fit to the map. The red, orange, yellow and green segments of the bar indicate the fraction of residues that contain outliers for ≥ 3 , 2, 1 and 0 types of geometric quality criteria respectively. A grey segment represents the fraction of residues that are not modelled. The numeric value for each fraction is indicated below the corresponding segment, with a dot representing fractions $\leq 5\%$. The upper red bar (where present) indicates the fraction of residues that have poor fit to the EM map (all-atom inclusion $< 40\%$). The numeric value is given above the bar.

Mol	Chain	Length	Quality of chain
1	A	836	
1	C	836	
2	B	831	
3	D	837	

Continued on next page...

Continued from previous page...

Mol	Chain	Length	Quality of chain
4	F	216	<div> <div>57%</div> <div>90%</div> <div>9%</div> </div>
4	G	216	<div> <div>67%</div> <div>91%</div> <div>8%</div> </div>
5	E	2	<div> <div>100%</div> <div>50%</div> <div>50%</div> </div>
5	H	2	<div> <div>50%</div> <div>50%</div> <div>50%</div> </div>
5	I	2	<div> <div>100%</div> <div>50%</div> <div>50%</div> </div>
5	J	2	<div> <div>100%</div> <div>50%</div> <div>50%</div> </div>

2 Entry composition

There are 6 unique types of molecules in this entry. The entry contains 24161 atoms, of which 0 are hydrogens and 0 are deuteriums.

In the tables below, the AltConf column contains the number of residues with at least one atom in alternate conformation and the Trace column contains the number of residues modelled with at most 2 atoms.

- Molecule 1 is a protein called N-methyl-D-aspartate receptor subunit NR1-8a.

Mol	Chain	Residues	Atoms					AltConf	Trace
1	A	796	Total	C	N	O	S	0	0
			5745	3691	978	1047	29		
1	C	798	Total	C	N	O	S	0	0
			5442	3460	938	1018	26		

There are 38 discrepancies between the modelled and reference sequences:

Chain	Residue	Modelled	Actual	Comment	Reference
A	22	ALA	CYS	conflict	UNP C0KD18
A	300	GLN	ASN	conflict	UNP C0KD18
A	350	GLN	ASN	conflict	UNP C0KD18
A	368	ASP	ASN	conflict	UNP C0KD18
A	440	ASP	ASN	conflict	UNP C0KD18
A	469	ASP	ASN	conflict	UNP C0KD18
A	493	ALA	LYS	conflict	UNP C0KD18
A	494	ALA	LYS	conflict	UNP C0KD18
A	495	ALA	GLU	conflict	UNP C0KD18
A	592	ALA	GLU	conflict	UNP C0KD18
A	593	ALA	GLU	conflict	UNP C0KD18
A	594	ALA	GLU	conflict	UNP C0KD18
A	610	ARG	GLY	conflict	UNP C0KD18
A	617	LEU	ILE	conflict	UNP C0KD18
A	636	LEU	GLY	conflict	UNP C0KD18
A	656	ARG	ASP	conflict	UNP C0KD18
A	741	ASP	LYS	conflict	UNP C0KD18
A	769	GLU	ASN	conflict	UNP C0KD18
A	816	TYR	MET	conflict	UNP C0KD18
C	22	ALA	CYS	conflict	UNP C0KD18
C	300	GLN	ASN	conflict	UNP C0KD18
C	350	GLN	ASN	conflict	UNP C0KD18
C	368	ASP	ASN	conflict	UNP C0KD18
C	440	ASP	ASN	conflict	UNP C0KD18
C	469	ASP	ASN	conflict	UNP C0KD18
C	493	ALA	LYS	conflict	UNP C0KD18

Continued on next page...

Continued from previous page...

Chain	Residue	Modelled	Actual	Comment	Reference
C	494	ALA	LYS	conflict	UNP C0KD18
C	495	ALA	GLU	conflict	UNP C0KD18
C	592	ALA	GLU	conflict	UNP C0KD18
C	593	ALA	GLU	conflict	UNP C0KD18
C	594	ALA	GLU	conflict	UNP C0KD18
C	610	ARG	GLY	conflict	UNP C0KD18
C	617	LEU	ILE	conflict	UNP C0KD18
C	636	LEU	GLY	conflict	UNP C0KD18
C	656	ARG	ASP	conflict	UNP C0KD18
C	741	ASP	LYS	conflict	UNP C0KD18
C	769	GLU	ASN	conflict	UNP C0KD18
C	816	TYR	MET	conflict	UNP C0KD18

- Molecule 2 is a protein called N-methyl-D-aspartate receptor subunit NR2A.

Mol	Chain	Residues	Atoms					AltConf	Trace
2	B	795	Total	C	N	O	S	0	0
			5573	3592	931	1019	31		

There are 13 discrepancies between the modelled and reference sequences:

Chain	Residue	Modelled	Actual	Comment	Reference
B	67	GLN	ASN	conflict	UNP B7ZSK1
B	372	ALA	ASN	conflict	UNP B7ZSK1
B	?	-	THR	deletion	UNP B7ZSK1
B	?	-	ALA	deletion	UNP B7ZSK1
B	?	-	SER	deletion	UNP B7ZSK1
B	?	-	LEU	deletion	UNP B7ZSK1
B	431	ALA	ASN	conflict	UNP B7ZSK1
B	529	ALA	ASN	conflict	UNP B7ZSK1
B	605	LEU	VAL	conflict	UNP B7ZSK1
B	644	ARG	GLU	conflict	UNP B7ZSK1
B	645	ARG	GLU	conflict	UNP B7ZSK1
B	675	GLN	ASN	conflict	UNP B7ZSK1
B	831	LYS	-	expression tag	UNP B7ZSK1

- Molecule 3 is a protein called Ionotropic glutamate receptor subunit NR2B.

Mol	Chain	Residues	Atoms					AltConf	Trace
3	D	794	Total	C	N	O	S	0	0
			5130	3283	865	957	25		

There are 17 discrepancies between the modelled and reference sequences:

Chain	Residue	Modelled	Actual	Comment	Reference
D	20	SER	MET	conflict	UNP A7XY94
D	21	ARG	GLY	conflict	UNP A7XY94
D	22	ALA	CYS	conflict	UNP A7XY94
D	64	GLU	ALA	conflict	UNP A7XY94
D	69	GLN	ASN	conflict	UNP A7XY94
D	343	ASP	ASN	conflict	UNP A7XY94
D	?	-	LYS	deletion	UNP A7XY94
D	?	-	TYR	deletion	UNP A7XY94
D	?	-	TYR	deletion	UNP A7XY94
D	?	-	VAL	deletion	UNP A7XY94
D	486	VAL	THR	conflict	UNP A7XY94
D	581	ALA	CYS	conflict	UNP A7XY94
D	611	LEU	VAL	conflict	UNP A7XY94
D	650	ARG	GLU	conflict	UNP A7XY94
D	651	ARG	GLU	conflict	UNP A7XY94
D	836	TYR	PHE	conflict	UNP A7XY94
D	837	LYS	-	expression tag	UNP A7XY94

- Molecule 4 is a protein called GluN2B-specific Fab, termed 11D1.

Mol	Chain	Residues	Atoms				AltConf	Trace
4	F	214	Total	C	N	O	0	0
			1070	642	214	214		
4	G	215	Total	C	N	O	0	0
			1075	645	215	215		

- Molecule 5 is an oligosaccharide called 2-acetamido-2-deoxy-beta-D-glucopyranose-(1-4)-2-acetamido-2-deoxy-beta-D-glucopyranose.



Mol	Chain	Residues	Atoms				AltConf	Trace
5	E	2	Total	C	N	O	0	0
			28	16	2	10		
5	H	2	Total	C	N	O	0	0
			28	16	2	10		
5	I	2	Total	C	N	O	0	0
			28	16	2	10		

Continued on next page...

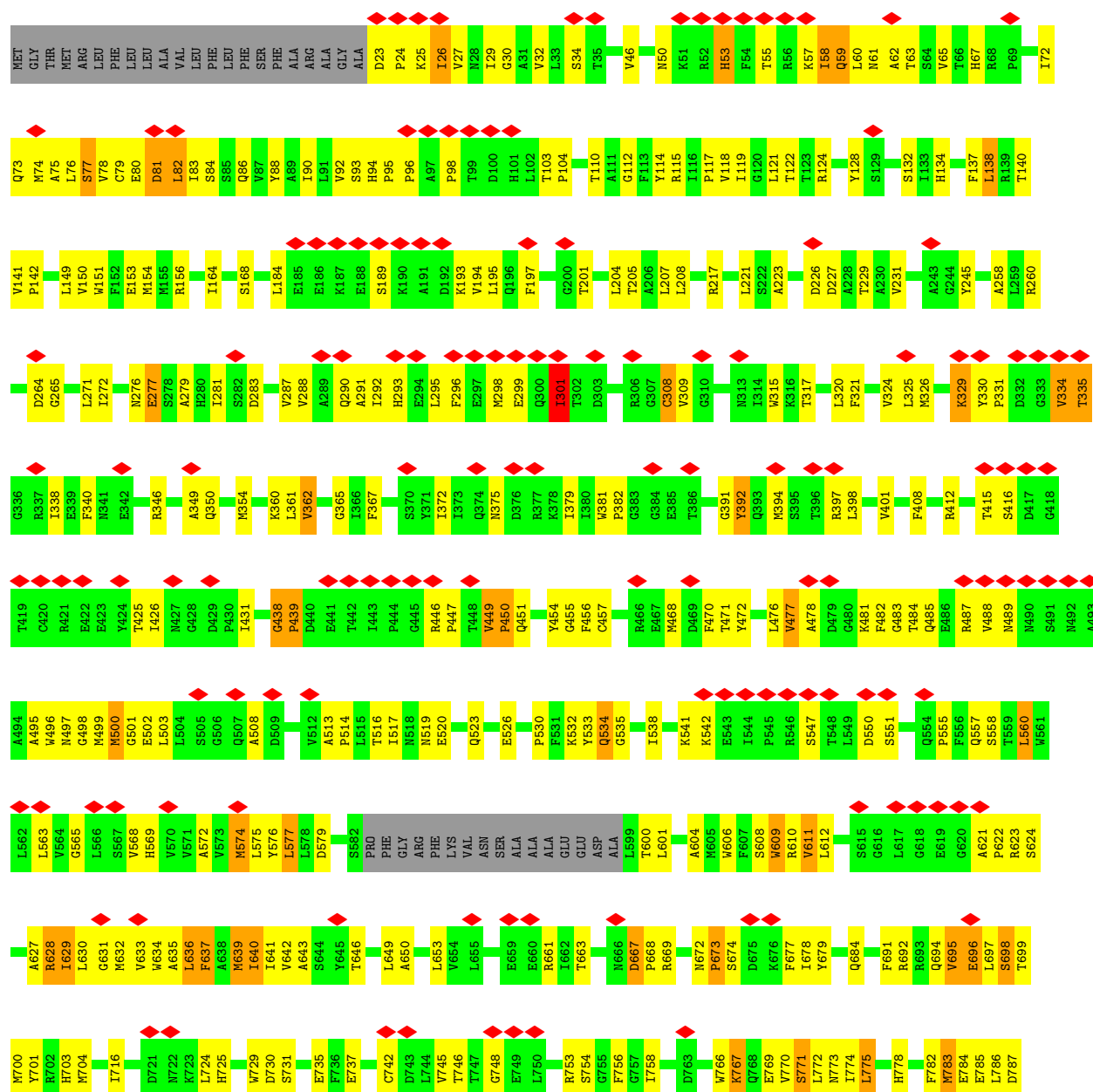
Continued from previous page...

Mol	Chain	Residues	Atoms				AltConf	Trace
			Total	C	N	O		
5	J	2	28	16	2	10	0	0

- Molecule 6 is 2-acetamido-2-deoxy-beta-D-glucopyranose (CCD ID: NAG) (formula: $C_8H_{15}NO_6$).

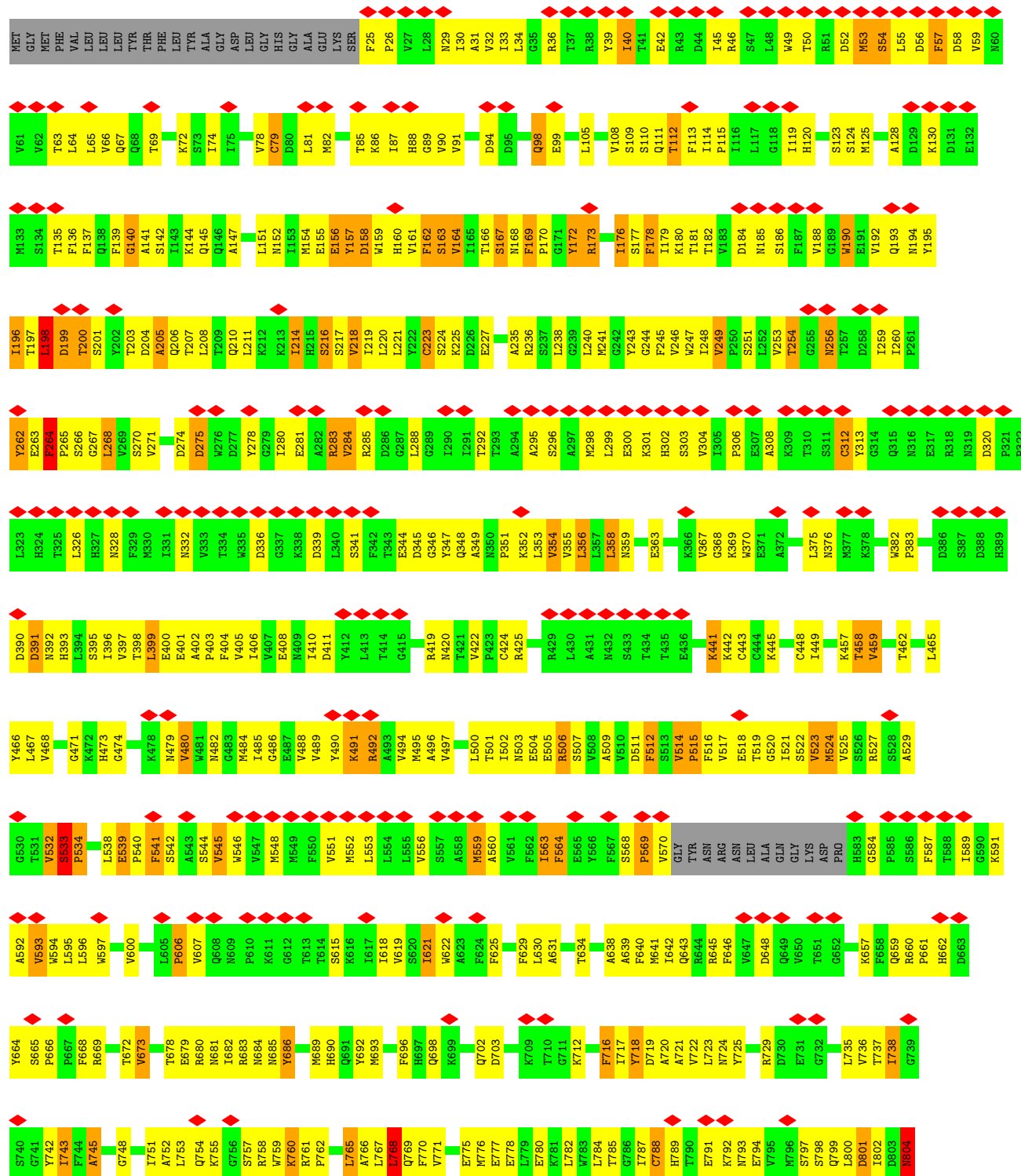
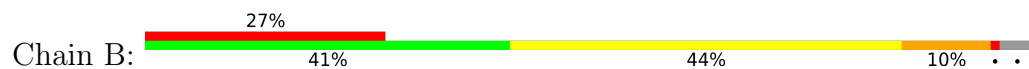


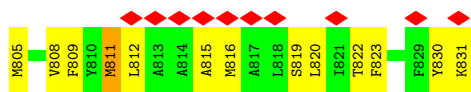
Mol	Chain	Residues	Atoms				AltConf
			Total	C	N	O	
6	D	1	14	8	1	5	0



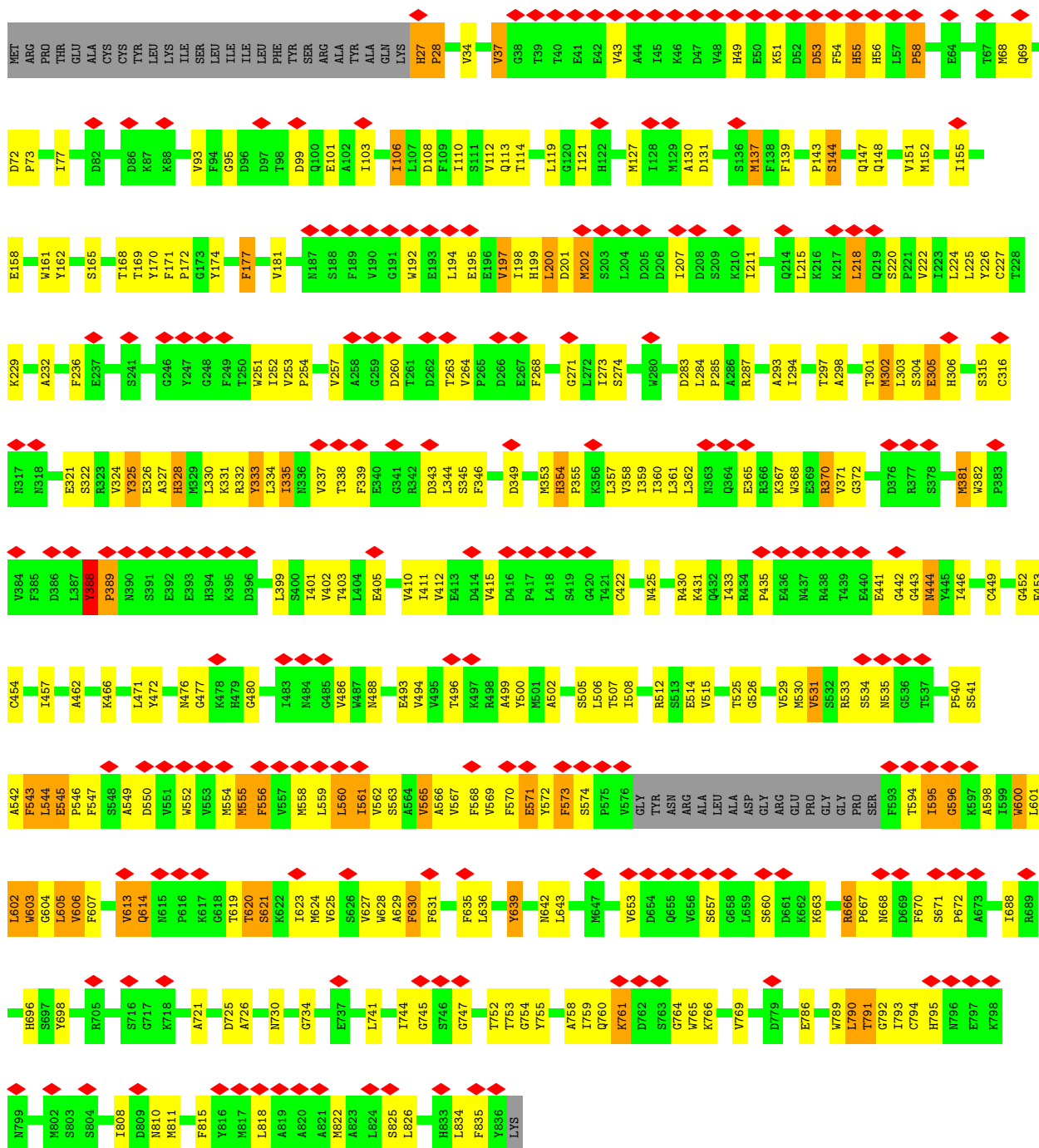


• Molecule 2: N-methyl-D-aspartate receptor subunit NR2A

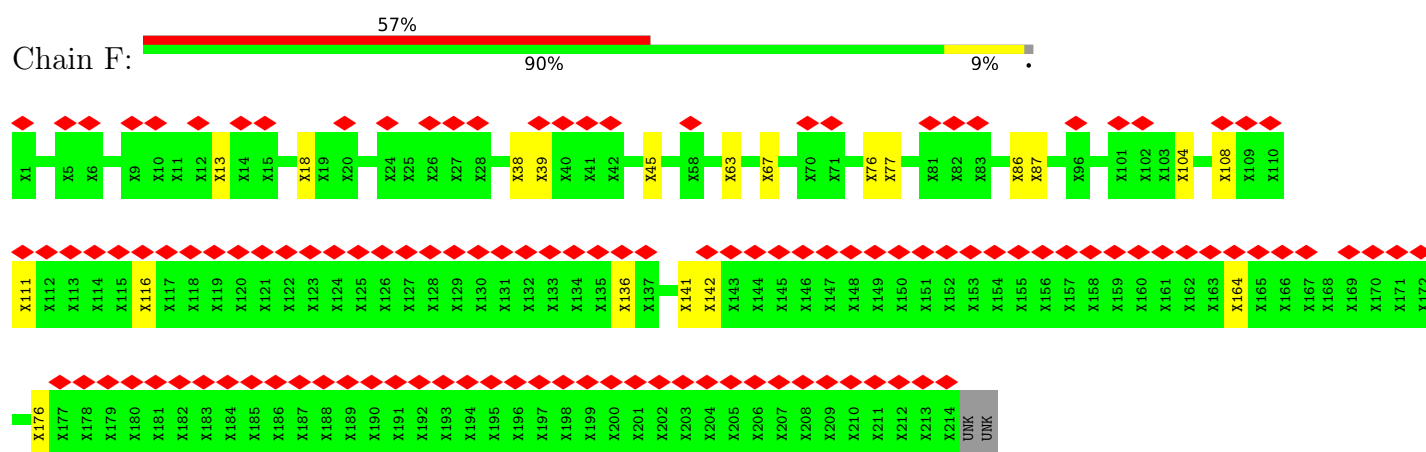




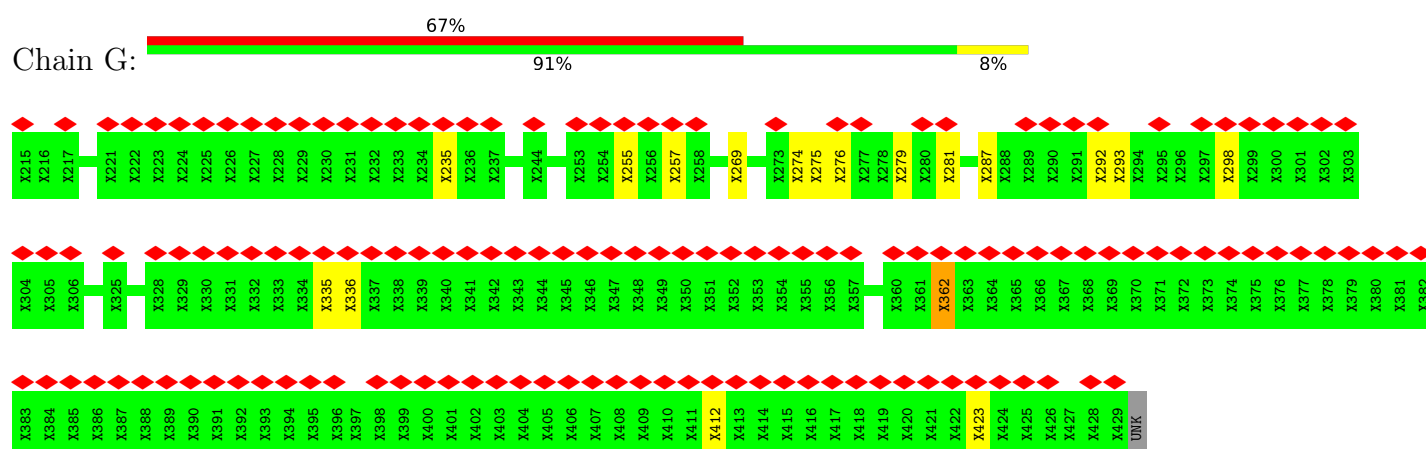
• Molecule 3: Ionotropic glutamate receptor subunit NR2B



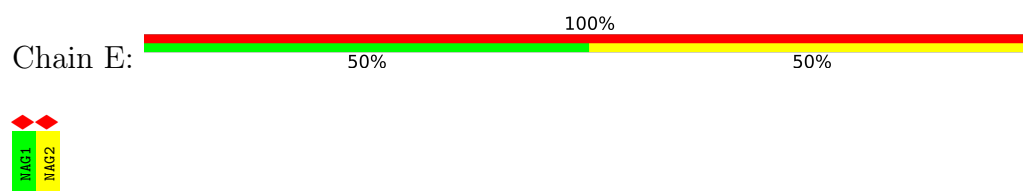
• Molecule 4: GluN2B-specific Fab, termed 11D1



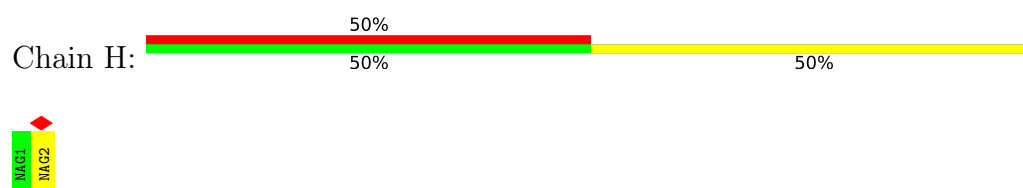
• Molecule 4: GluN2B-specific Fab, termed 11D1



• Molecule 5: 2-acetamido-2-deoxy-beta-D-glucopyranose-(1-4)-2-acetamido-2-deoxy-beta-D-glucopyranose



• Molecule 5: 2-acetamido-2-deoxy-beta-D-glucopyranose-(1-4)-2-acetamido-2-deoxy-beta-D-glucopyranose



• Molecule 5: 2-acetamido-2-deoxy-beta-D-glucopyranose-(1-4)-2-acetamido-2-deoxy-beta-D-glucopyranose





- Molecule 5: 2-acetamido-2-deoxy-beta-D-glucopyranose-(1-4)-2-acetamido-2-deoxy-beta-D-glucopyranose



4 Experimental information

Property	Value	Source
EM reconstruction method	SINGLE PARTICLE	Depositor
Imposed symmetry	POINT, Not provided	
Number of particles used	302052	Depositor
Resolution determination method	FSC 0.143 CUT-OFF	Depositor
CTF correction method	PHASE FLIPPING AND AMPLITUDE CORRECTION	Depositor
Microscope	FEI TITAN KRIOS	Depositor
Voltage (kV)	300	Depositor
Electron dose ($e^-/\text{\AA}^2$)	0.84	Depositor
Minimum defocus (nm)	Not provided	
Maximum defocus (nm)	Not provided	
Magnification	Not provided	
Image detector	GATAN K2 SUMMIT (4k x 4k)	Depositor
Maximum map value	0.121	Depositor
Minimum map value	-0.025	Depositor
Average map value	0.001	Depositor
Map value standard deviation	0.006	Depositor
Recommended contour level	0.055	Depositor
Map size (\AA)	435.2, 435.2, 435.2	wwPDB
Map dimensions	256, 256, 256	wwPDB
Map angles ($^\circ$)	90.0, 90.0, 90.0	wwPDB
Pixel spacing (\AA)	1.7, 1.7, 1.7	Depositor

5 Model quality

5.1 Standard geometry

Bond lengths and bond angles in the following residue types are not validated in this section: NAG

The Z score for a bond length (or angle) is the number of standard deviations the observed value is removed from the expected value. A bond length (or angle) with $|Z| > 5$ is considered an outlier worth inspection. RMSZ is the root-mean-square of all Z scores of the bond lengths (or angles).

Mol	Chain	Bond lengths		Bond angles	
		RMSZ	$\# Z > 5$	RMSZ	$\# Z > 5$
1	A	0.64	0/5877	1.20	57/8041 (0.7%)
1	C	0.48	0/5549	1.15	48/7614 (0.6%)
2	B	0.70	1/5697 (0.0%)	1.30	77/7814 (1.0%)
3	D	0.55	1/5233 (0.0%)	1.22	46/7227 (0.6%)
All	All	0.60	2/22356 (0.0%)	1.22	228/30696 (0.7%)

Chiral center outliers are detected by calculating the chiral volume of a chiral center and verifying if the center is modelled as a planar moiety or with the opposite hand. A planarity outlier is detected by checking planarity of atoms in a peptide group, atoms in a mainchain group or atoms of a sidechain that are expected to be planar.

Mol	Chain	#Chirality outliers	#Planarity outliers
1	A	0	1
1	C	0	1
4	F	0	1
4	G	0	1
All	All	0	4

All (2) bond length outliers are listed below:

Mol	Chain	Res	Type	Atoms	Z	Observed(Å)	Ideal(Å)
3	D	791	THR	C-N	6.61	1.39	1.33
2	B	178	PHE	N-CA	-5.51	1.39	1.46

The worst 5 of 228 bond angle outliers are listed below:

Mol	Chain	Res	Type	Atoms	Z	Observed(°)	Ideal(°)
2	B	200	THR	N-CA-C	14.17	126.73	111.28
3	D	613	VAL	N-CA-C	12.52	122.44	110.42
3	D	791	THR	CA-C-N	12.15	134.03	122.73

Continued on next page...

Continued from previous page...

Mol	Chain	Res	Type	Atoms	Z	Observed(°)	Ideal(°)
3	D	791	THR	C-N-CA	12.15	134.03	122.73
1	A	731	SER	N-CA-C	11.95	124.31	111.28

There are no chirality outliers.

All (4) planarity outliers are listed below:

Mol	Chain	Res	Type	Group
1	A	570	VAL	Mainchain
1	C	792	ARG	Mainchain
4	F	67	UNK	Mainchain
4	G	362	UNK	Peptide

5.2 Too-close contacts

In the following table, the Non-H and H(model) columns list the number of non-hydrogen atoms and hydrogen atoms in the chain respectively. The H(added) column lists the number of hydrogen atoms added and optimized by MolProbity. The Clashes column lists the number of clashes within the asymmetric unit, whereas Symm-Clashes lists symmetry-related clashes.

Mol	Chain	Non-H	H(model)	H(added)	Clashes	Symm-Clashes
1	A	5745	0	5276	801	0
1	C	5442	0	4757	516	0
2	B	5573	0	4942	894	0
3	D	5130	0	4104	447	0
4	F	1070	0	235	10	0
4	G	1075	0	235	11	0
5	E	28	0	25	4	0
5	H	28	0	25	2	0
5	I	28	0	25	3	0
5	J	28	0	25	2	0
6	D	14	0	13	0	0
All	All	24161	0	19662	2406	0

The all-atom clashscore is defined as the number of clashes found per 1000 atoms (including hydrogen atoms). The all-atom clashscore for this structure is 55.

The worst 5 of 2406 close contacts within the same asymmetric unit are listed below, sorted by their clash magnitude.

Atom-1	Atom-2	Interatomic distance (Å)	Clash overlap (Å)
1:A:630:LEU:HD22	2:B:816:MET:SD	1.39	1.62

Continued on next page...

Continued from previous page...

Atom-1	Atom-2	Interatomic distance (Å)	Clash overlap (Å)
1:A:682:VAL:HG21	1:A:729:TRP:CH2	1.17	1.60
2:B:403:PRO:CG	2:B:722:VAL:HG22	1.11	1.57
1:A:506:GLY:CA	1:A:761:ARG:NH2	1.68	1.57
1:A:121:LEU:HD13	1:A:281:ILE:CG1	1.34	1.55

There are no symmetry-related clashes.

5.3 Torsion angles [i](#)

5.3.1 Protein backbone [i](#)

In the following table, the Percentiles column shows the percent Ramachandran outliers of the chain as a percentile score with respect to all PDB entries followed by that with respect to all EM entries.

The Analysed column shows the number of residues for which the backbone conformation was analysed, and the total number of residues.

Mol	Chain	Analysed	Favoured	Allowed	Outliers	Percentiles	
1	A	792/836 (95%)	756 (96%)	31 (4%)	5 (1%)	21	59
1	C	794/836 (95%)	758 (96%)	30 (4%)	6 (1%)	16	54
2	B	791/831 (95%)	733 (93%)	44 (6%)	14 (2%)	6	34
3	D	790/837 (94%)	752 (95%)	31 (4%)	7 (1%)	14	50
All	All	3167/3340 (95%)	2999 (95%)	136 (4%)	32 (1%)	15	48

5 of 32 Ramachandran outliers are listed below:

Mol	Chain	Res	Type
1	A	447	PRO
2	B	169	PHE
2	B	515	PRO
2	B	534	PRO
1	C	392	TYR

5.3.2 Protein sidechains [i](#)

In the following table, the Percentiles column shows the percent sidechain outliers of the chain as a percentile score with respect to all PDB entries followed by that with respect to all EM entries.

The Analysed column shows the number of residues for which the sidechain conformation was analysed, and the total number of residues.

Mol	Chain	Analysed	Rotameric	Outliers	Percentiles	
1	A	534/714 (75%)	494 (92%)	40 (8%)	12	33
1	C	461/714 (65%)	414 (90%)	47 (10%)	7	23
2	B	490/724 (68%)	435 (89%)	55 (11%)	6	19
3	D	375/735 (51%)	330 (88%)	45 (12%)	5	17
All	All	1860/2887 (64%)	1673 (90%)	187 (10%)	9	23

5 of 187 residues with a non-rotameric sidechain are listed below:

Mol	Chain	Res	Type
1	C	560	LEU
3	D	55	HIS
1	C	628	ARG
1	C	767	LYS
3	D	218	LEU

Sometimes sidechains can be flipped to improve hydrogen bonding and reduce clashes. 5 of 42 such sidechains are listed below:

Mol	Chain	Res	Type
1	C	451	GLN
3	D	55	HIS
1	C	523	GLN
1	C	725	HIS
3	D	199	HIS

5.3.3 RNA ⓘ

There are no RNA molecules in this entry.

5.4 Non-standard residues in protein, DNA, RNA chains ⓘ

There are no non-standard protein/DNA/RNA residues in this entry.

5.5 Carbohydrates ⓘ

8 monosaccharides are modelled in this entry.

In the following table, the Counts columns list the number of bonds (or angles) for which Mogul statistics could be retrieved, the number of bonds (or angles) that are observed in the model and the number of bonds (or angles) that are defined in the Chemical Component Dictionary. The Link column lists molecule types, if any, to which the group is linked. The Z score for a bond length (or angle) is the number of standard deviations the observed value is removed from the expected value. A bond length (or angle) with $|Z| > 2$ is considered an outlier worth inspection. RMSZ is the root-mean-square of all Z scores of the bond lengths (or angles).

Mol	Type	Chain	Res	Link	Bond lengths			Bond angles		
					Counts	RMSZ	$\# Z > 2$	Counts	RMSZ	$\# Z > 2$
5	NAG	E	1	5,1	14,14,15	0.29	0	17,19,21	0.56	0
5	NAG	E	2	5	14,14,15	0.29	0	17,19,21	0.56	0
5	NAG	H	1	5,1	14,14,15	0.30	0	17,19,21	0.56	0
5	NAG	H	2	5	14,14,15	0.29	0	17,19,21	0.55	0
5	NAG	I	1	5,1	14,14,15	0.29	0	17,19,21	0.56	0
5	NAG	I	2	5	14,14,15	0.29	0	17,19,21	0.56	0
5	NAG	J	1	3,5	14,14,15	0.29	0	17,19,21	0.56	0
5	NAG	J	2	5	14,14,15	0.30	0	17,19,21	0.56	0

In the following table, the Chirals column lists the number of chiral outliers, the number of chiral centers analysed, the number of these observed in the model and the number defined in the Chemical Component Dictionary. Similar counts are reported in the Torsion and Rings columns. '-' means no outliers of that kind were identified.

Mol	Type	Chain	Res	Link	Chirals	Torsions	Rings
5	NAG	E	1	5,1	-	2/6/23/26	0/1/1/1
5	NAG	E	2	5	-	5/6/23/26	0/1/1/1
5	NAG	H	1	5,1	-	0/6/23/26	0/1/1/1
5	NAG	H	2	5	-	5/6/23/26	0/1/1/1
5	NAG	I	1	5,1	-	5/6/23/26	0/1/1/1
5	NAG	I	2	5	-	5/6/23/26	0/1/1/1
5	NAG	J	1	3,5	-	2/6/23/26	0/1/1/1
5	NAG	J	2	5	-	5/6/23/26	0/1/1/1

There are no bond length outliers.

There are no bond angle outliers.

There are no chirality outliers.

5 of 29 torsion outliers are listed below:

Mol	Chain	Res	Type	Atoms
5	E	2	NAG	C3-C2-N2-C7
5	E	2	NAG	C8-C7-N2-C2

Continued on next page...

Continued from previous page...

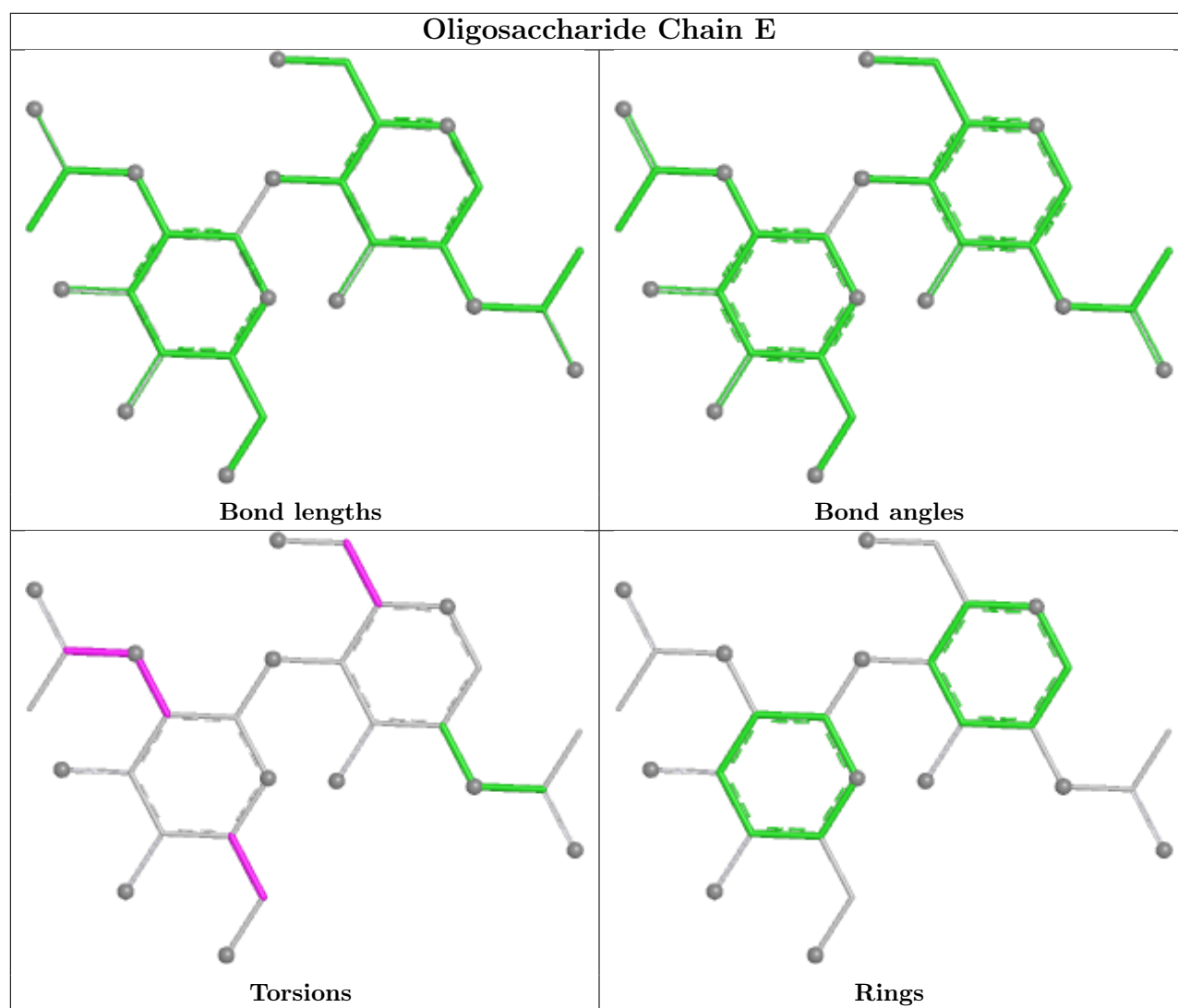
Mol	Chain	Res	Type	Atoms
5	E	2	NAG	O7-C7-N2-C2
5	H	2	NAG	C3-C2-N2-C7
5	H	2	NAG	C8-C7-N2-C2

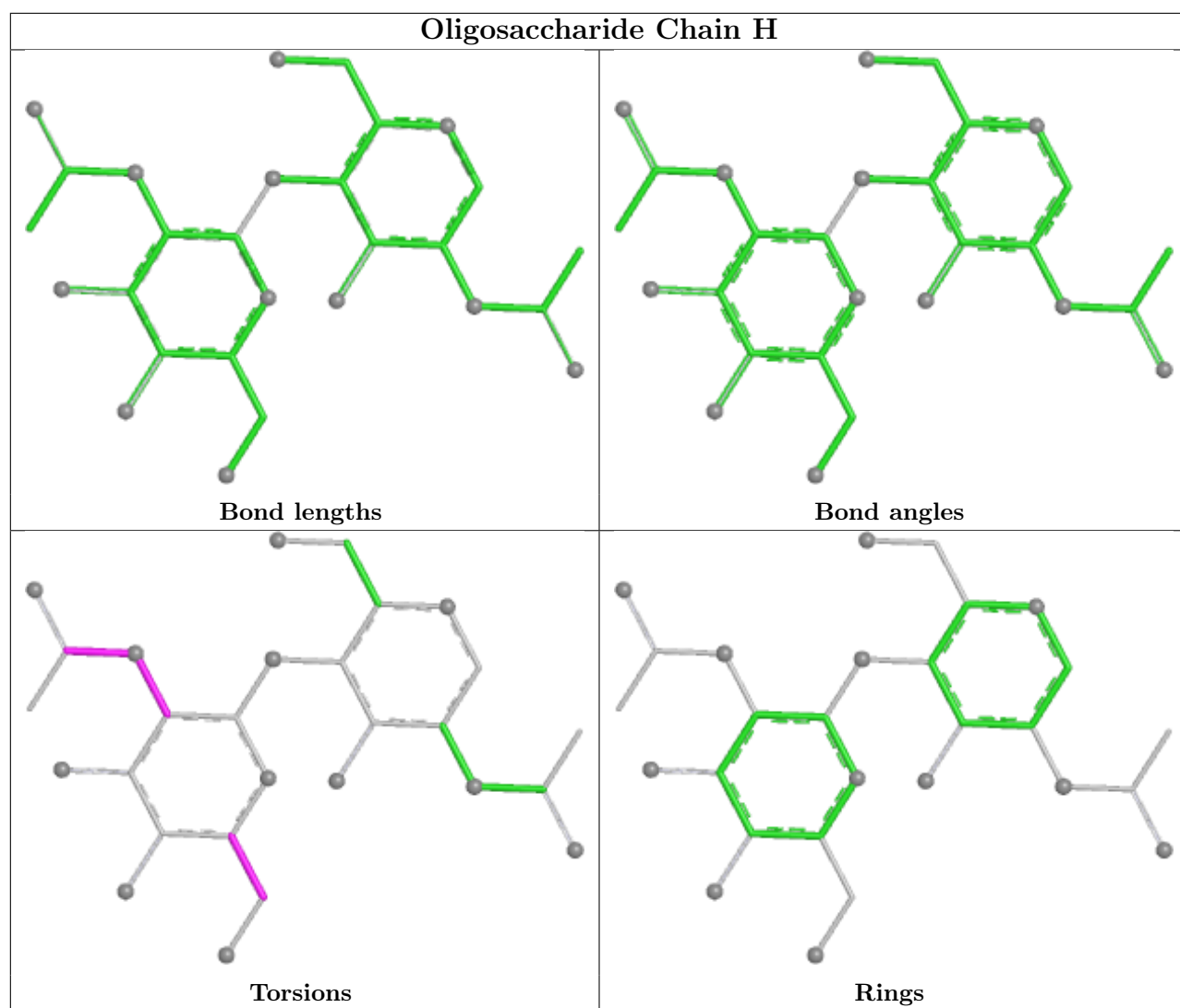
There are no ring outliers.

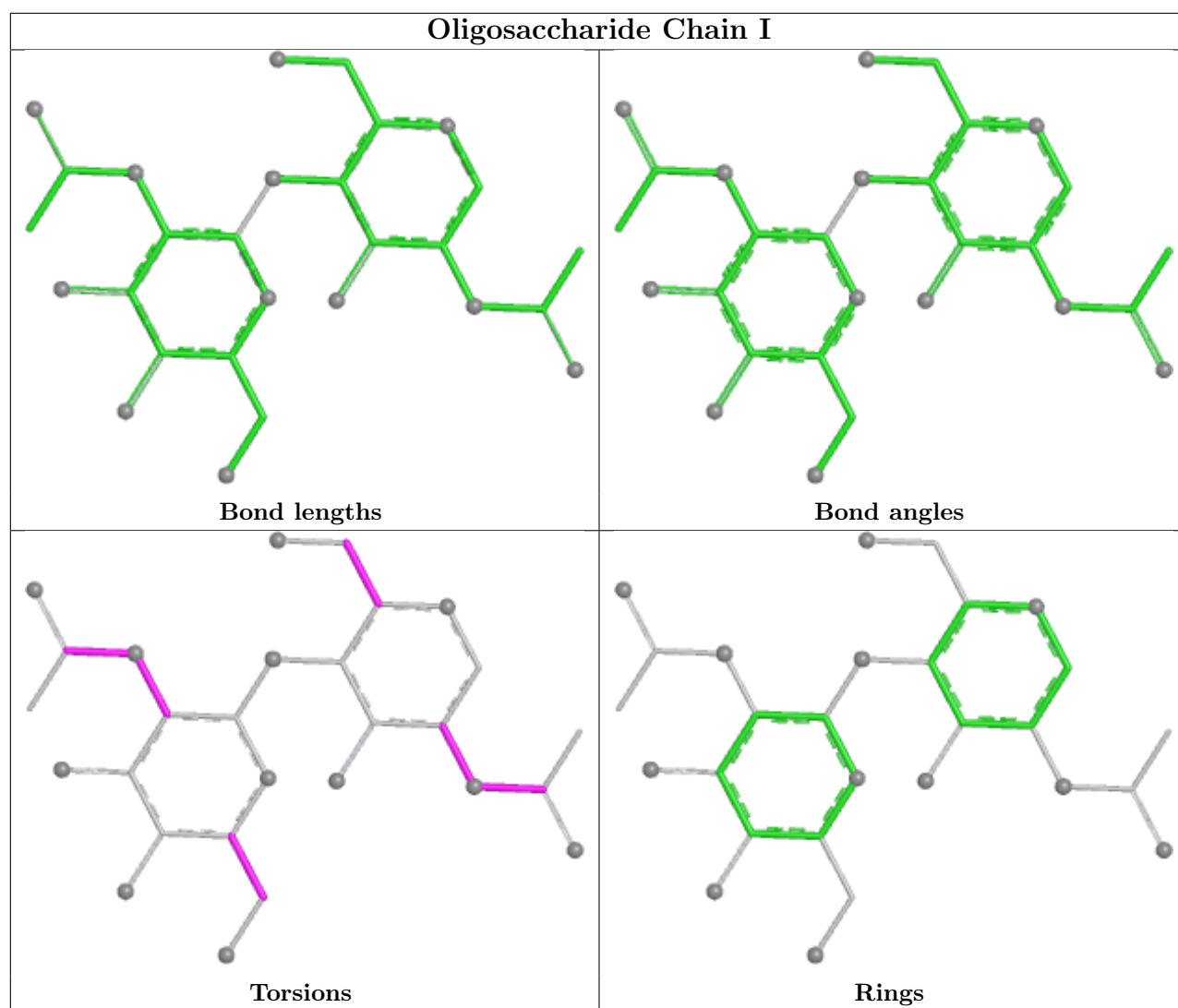
4 monomers are involved in 11 short contacts:

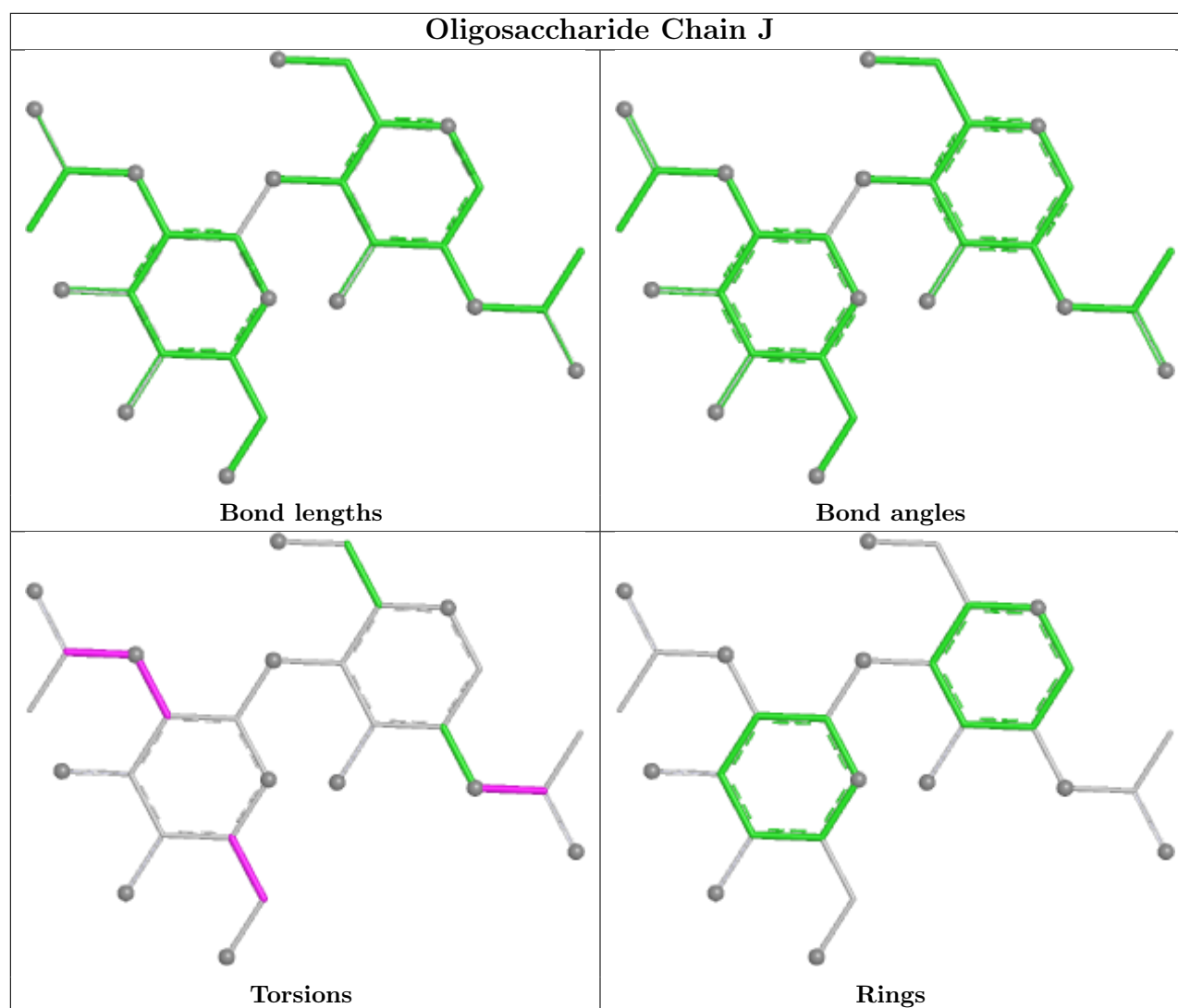
Mol	Chain	Res	Type	Clashes	Symm-Clashes
5	I	2	NAG	3	0
5	J	2	NAG	2	0
5	H	2	NAG	2	0
5	E	2	NAG	4	0

The following is a two-dimensional graphical depiction of Mogul quality analysis of bond lengths, bond angles, torsion angles, and ring geometry for oligosaccharide.









5.6 Ligand geometry [i](#)

1 ligand is modelled in this entry.

In the following table, the Counts columns list the number of bonds (or angles) for which Mogul statistics could be retrieved, the number of bonds (or angles) that are observed in the model and the number of bonds (or angles) that are defined in the Chemical Component Dictionary. The Link column lists molecule types, if any, to which the group is linked. The Z score for a bond length (or angle) is the number of standard deviations the observed value is removed from the expected value. A bond length (or angle) with $|Z| > 2$ is considered an outlier worth inspection. RMSZ is the root-mean-square of all Z scores of the bond lengths (or angles).

Mol	Type	Chain	Res	Link	Bond lengths			Bond angles		
					Counts	RMSZ	$\# Z > 2$	Counts	RMSZ	$\# Z > 2$
6	NAG	D	1003	3	14,14,15	0.29	0	17,19,21	0.56	0

In the following table, the Chirals column lists the number of chiral outliers, the number of chiral

centers analysed, the number of these observed in the model and the number defined in the Chemical Component Dictionary. Similar counts are reported in the Torsion and Rings columns. '-' means no outliers of that kind were identified.

Mol	Type	Chain	Res	Link	Chirals	Torsions	Rings
6	NAG	D	1003	3	-	2/6/23/26	0/1/1/1

There are no bond length outliers.

There are no bond angle outliers.

There are no chirality outliers.

All (2) torsion outliers are listed below:

Mol	Chain	Res	Type	Atoms
6	D	1003	NAG	C8-C7-N2-C2
6	D	1003	NAG	O7-C7-N2-C2

There are no ring outliers.

No monomer is involved in short contacts.

5.7 Other polymers [i](#)

There are no such residues in this entry.

5.8 Polymer linkage issues [i](#)

The following chains have linkage breaks:

Mol	Chain	Number of breaks
4	G	1

All chain breaks are listed below:

Model	Chain	Residue-1	Atom-1	Residue-2	Atom-2	Distance (Å)
1	G	348:UNK	C	349:UNK	N	14.40

6 Map visualisation [i](#)

This section contains visualisations of the EMDB entry EMD-8581. These allow visual inspection of the internal detail of the map and identification of artifacts.

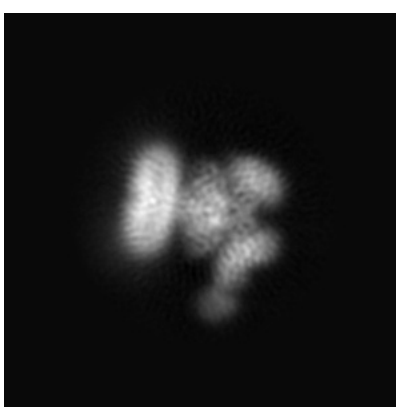
No raw map or half-maps were deposited for this entry and therefore no images, graphs, etc. pertaining to the raw map can be shown.

6.1 Orthogonal projections [i](#)

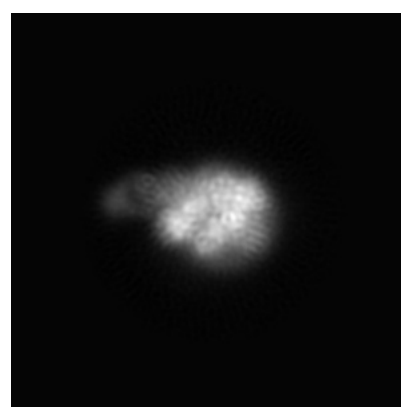
6.1.1 Primary map



X



Y

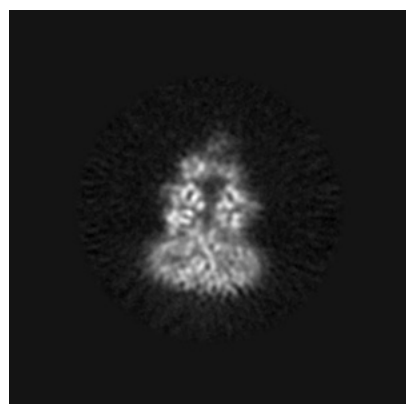


Z

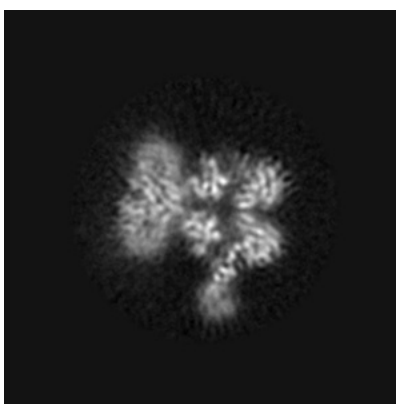
The images above show the map projected in three orthogonal directions.

6.2 Central slices [i](#)

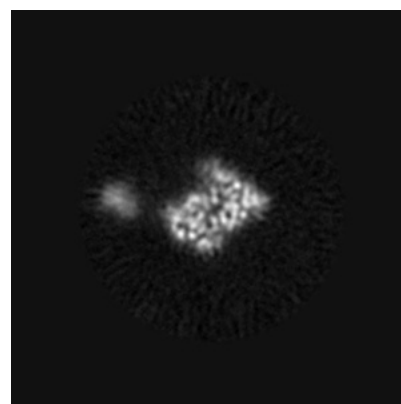
6.2.1 Primary map



X Index: 128



Y Index: 128

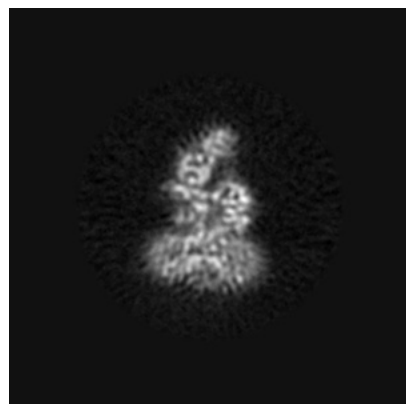


Z Index: 128

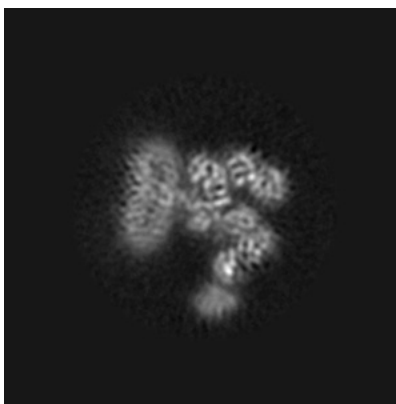
The images above show central slices of the map in three orthogonal directions.

6.3 Largest variance slices [i](#)

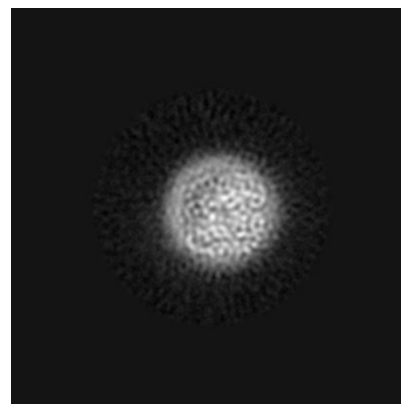
6.3.1 Primary map



X Index: 135



Y Index: 136



Z Index: 90

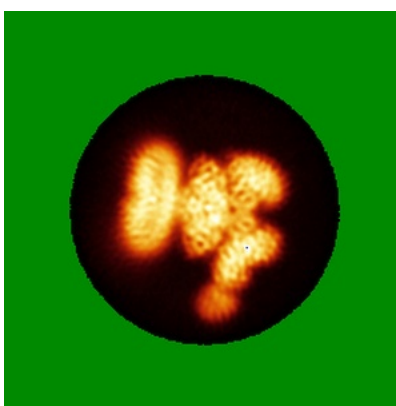
The images above show the largest variance slices of the map in three orthogonal directions.

6.4 Orthogonal standard-deviation projections (False-color) [i](#)

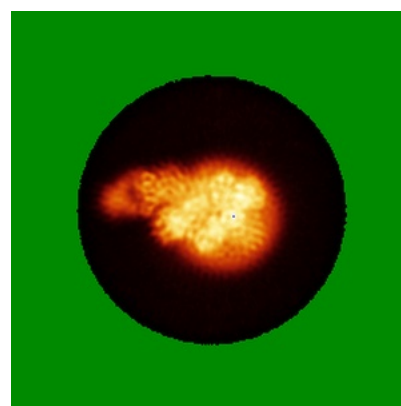
6.4.1 Primary map



X



Y

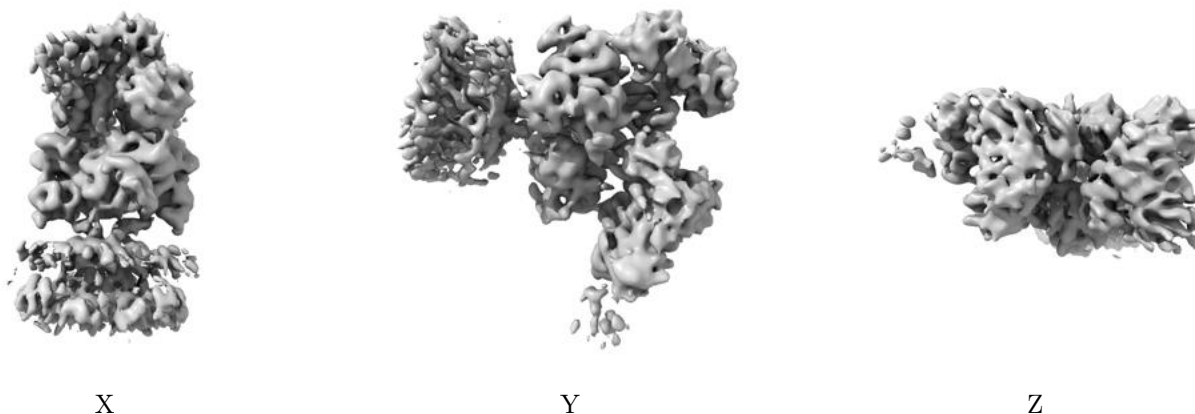


Z

The images above show the map standard deviation projections with false color in three orthogonal directions. Minimum values are shown in green, max in blue, and dark to light orange shades represent small to large values respectively.

6.5 Orthogonal surface views [i](#)

6.5.1 Primary map



The images above show the 3D surface view of the map at the recommended contour level 0.055. These images, in conjunction with the slice images, may facilitate assessment of whether an appropriate contour level has been provided.

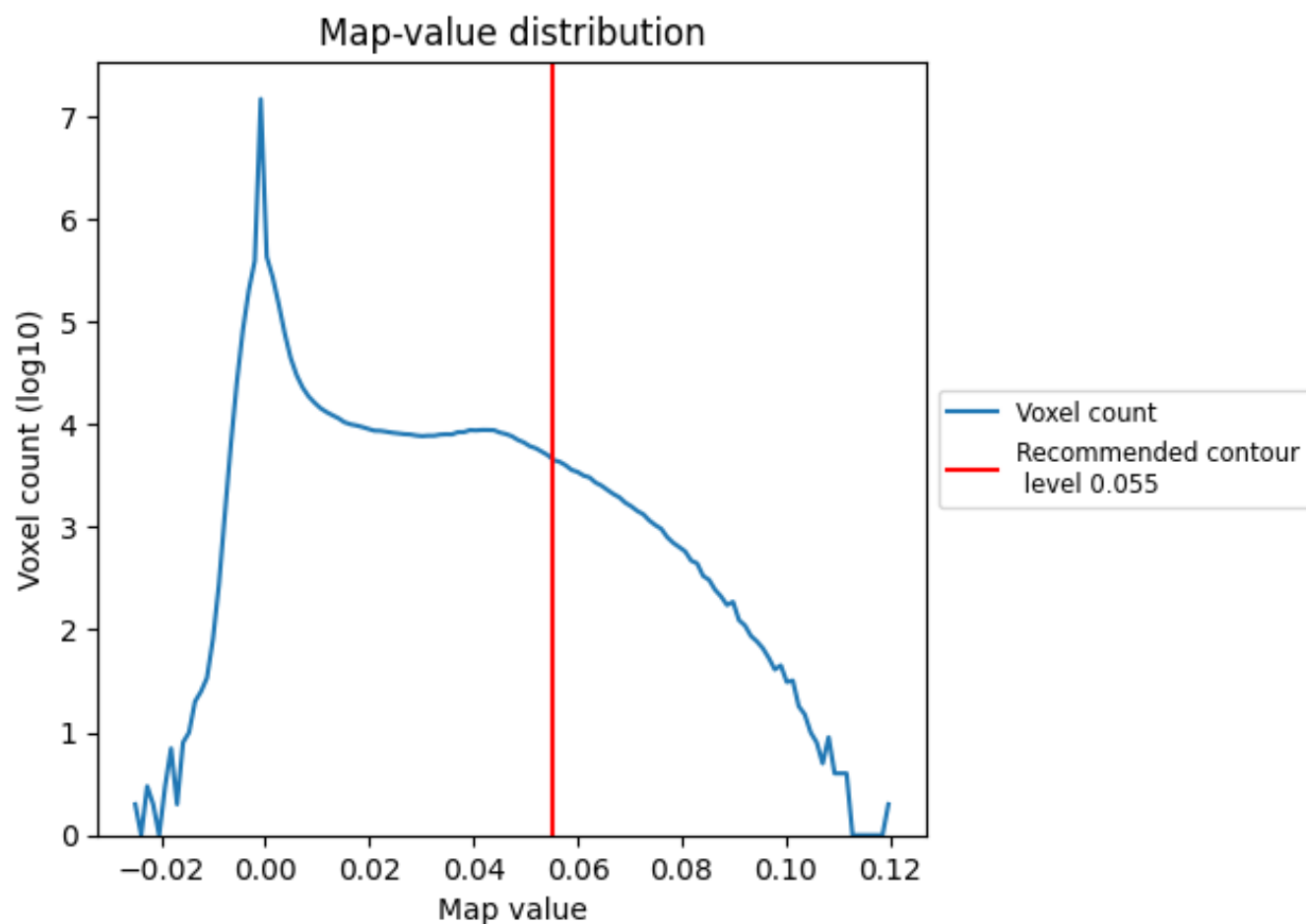
6.6 Mask visualisation [i](#)

This section was not generated. No masks/segmentation were deposited.

7 Map analysis [i](#)

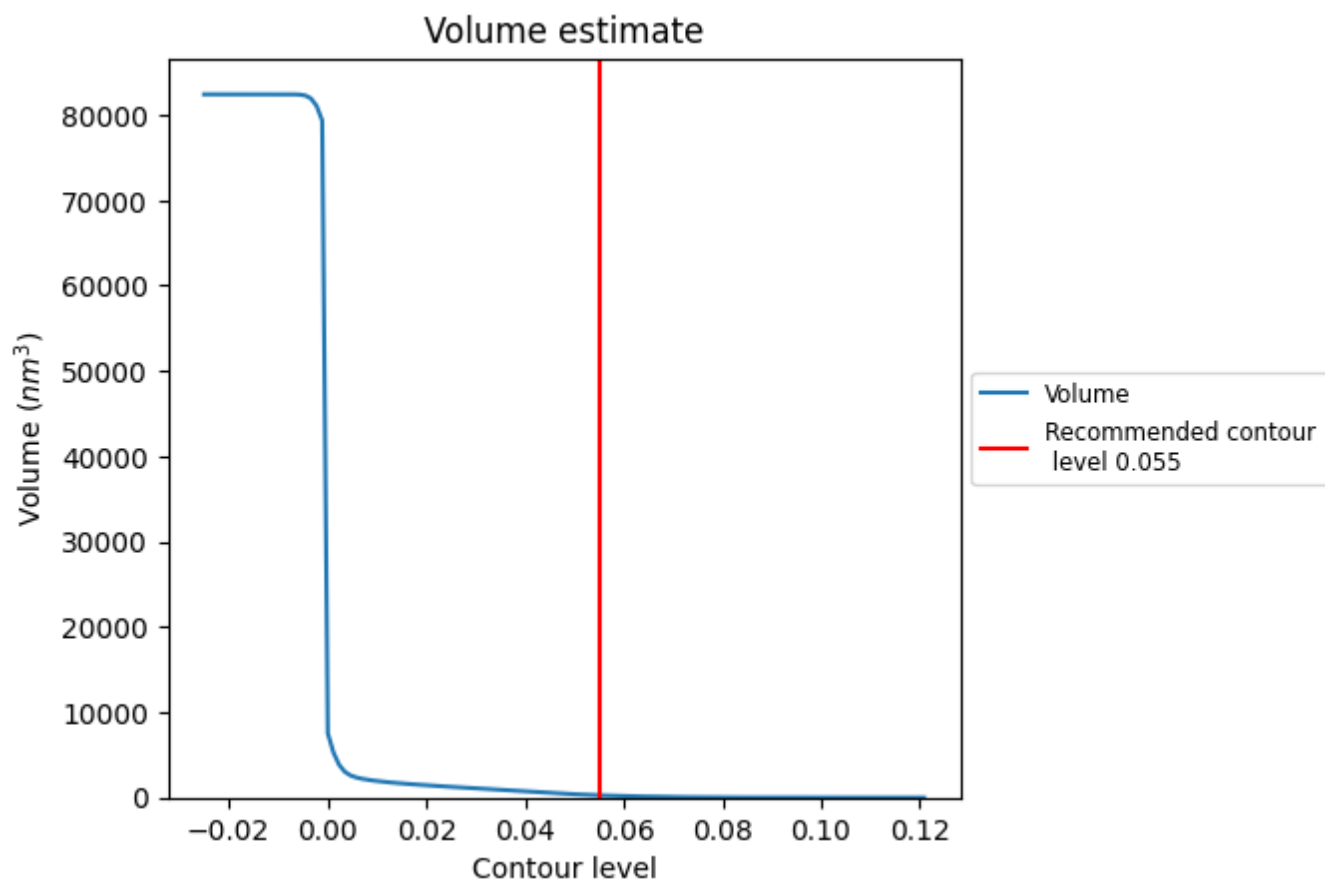
This section contains the results of statistical analysis of the map.

7.1 Map-value distribution [i](#)



The map-value distribution is plotted in 128 intervals along the x-axis. The y-axis is logarithmic. A spike in this graph at zero usually indicates that the volume has been masked.

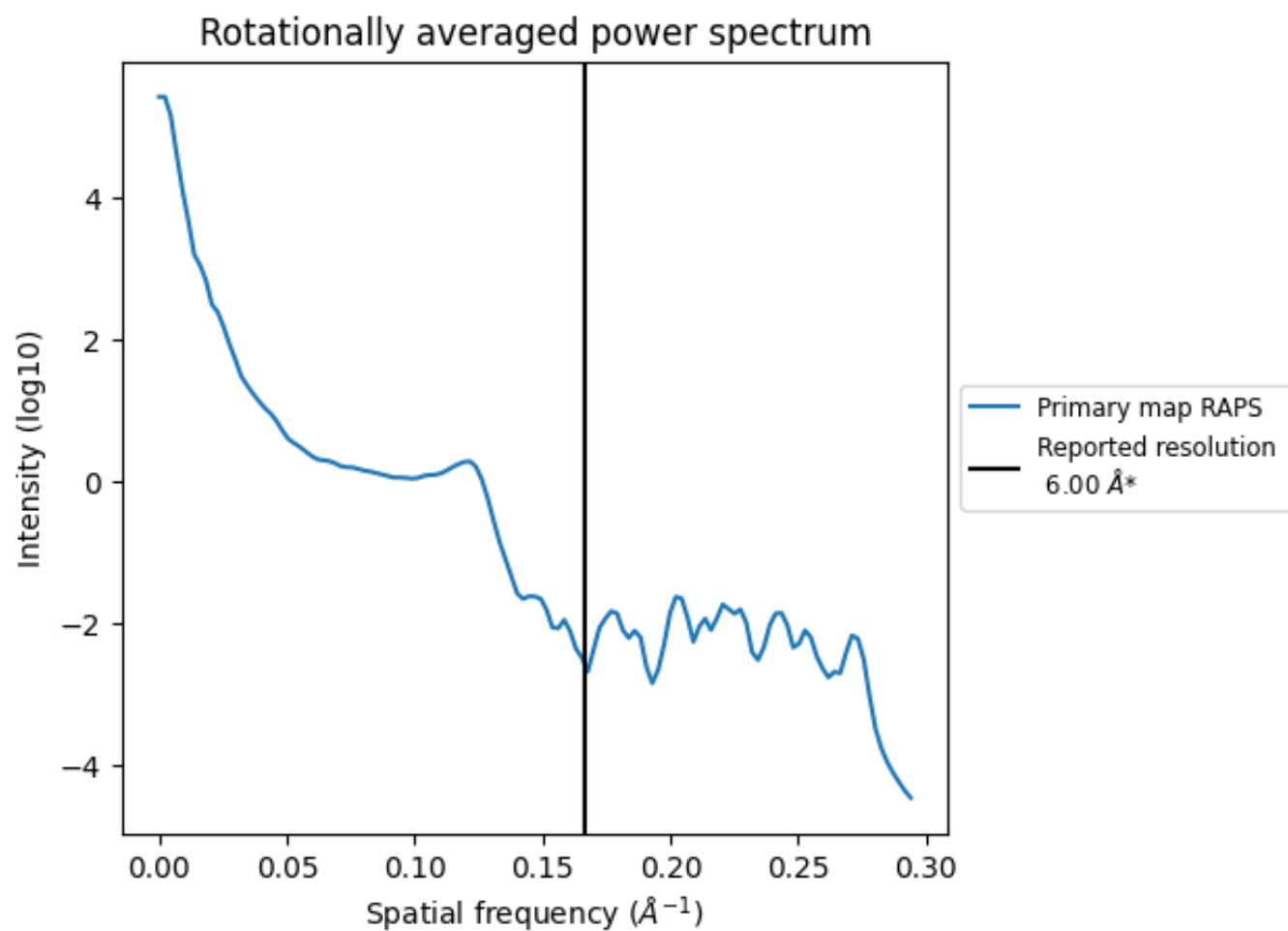
7.2 Volume estimate [i](#)



The volume at the recommended contour level is 267 nm³; this corresponds to an approximate mass of 241 kDa.

The volume estimate graph shows how the enclosed volume varies with the contour level. The recommended contour level is shown as a vertical line and the intersection between the line and the curve gives the volume of the enclosed surface at the given level.

7.3 Rotationally averaged power spectrum ⓘ



*Reported resolution corresponds to spatial frequency of 0.167 Å⁻¹

8 Fourier-Shell correlation

This section was not generated. No FSC curve or half-maps provided.

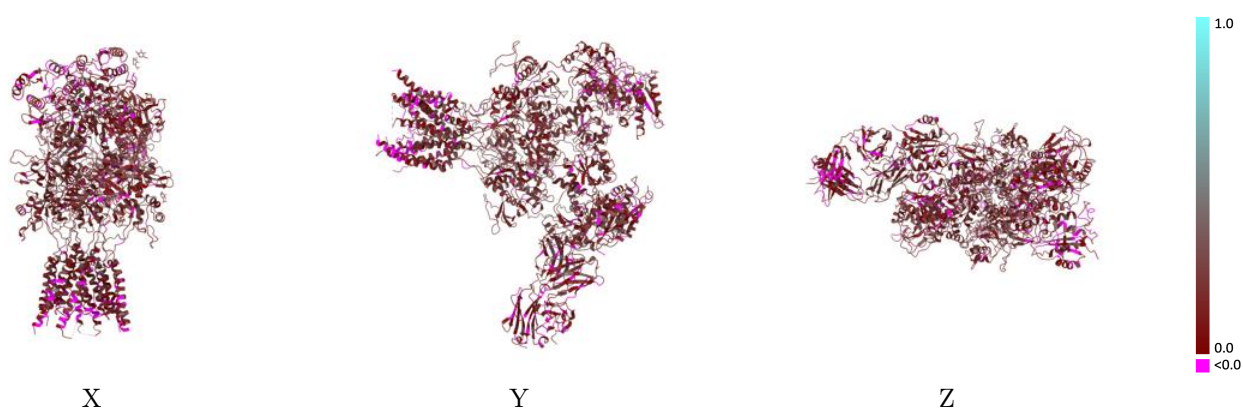
9 Map-model fit [i](#)

This section contains information regarding the fit between EMDB map EMD-8581 and PDB model 5UP2. Per-residue inclusion information can be found in section 3 on page 8.

9.1 Map-model overlay [i](#)

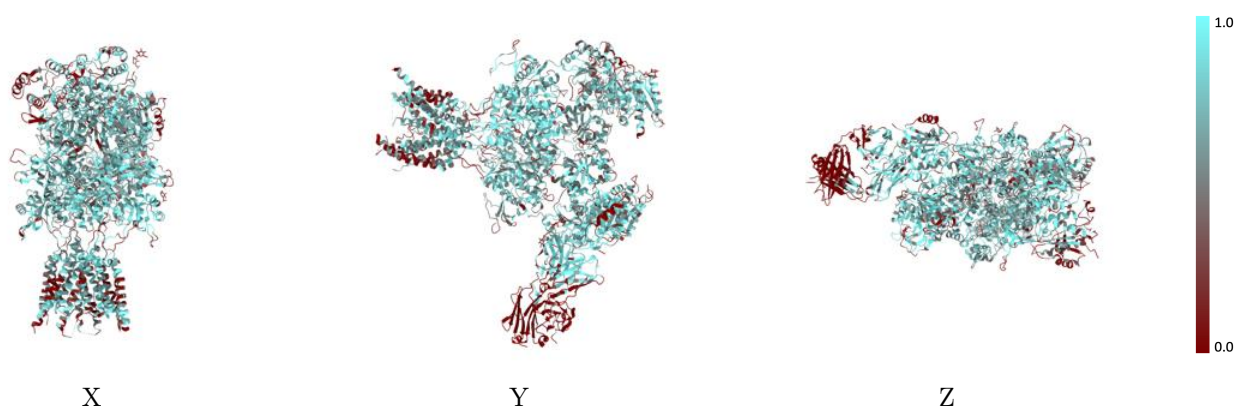
This section was not generated.

9.2 Q-score mapped to coordinate model [i](#)



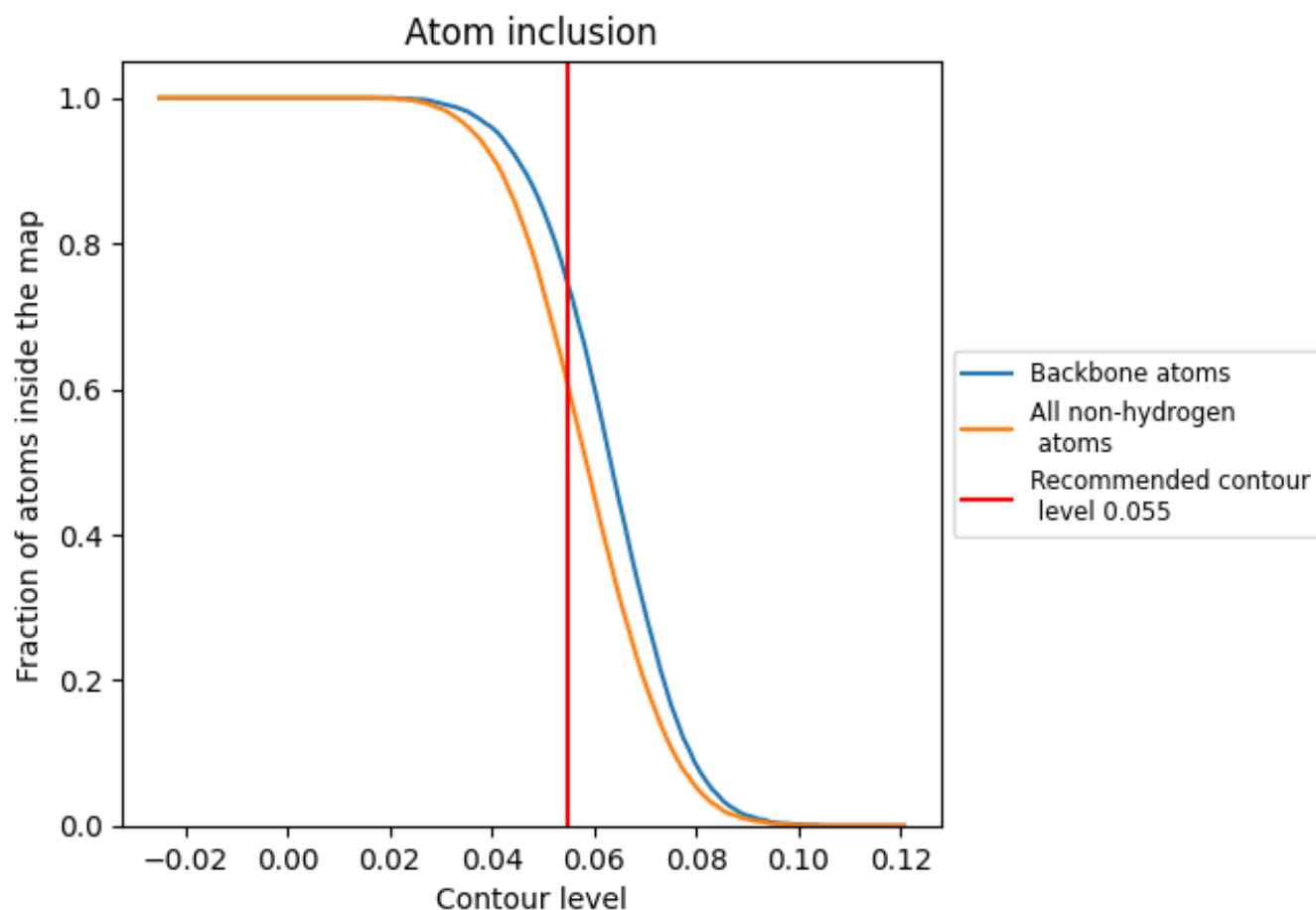
The images above show the model with each residue coloured according to its Q-score. This shows their resolvability in the map with higher Q-score values reflecting better resolvability. Please note: Q-score is calculating the resolvability of atoms, and thus high values are only expected at resolutions at which atoms can be resolved. Low Q-score values may therefore be expected for many entries.

9.3 Atom inclusion mapped to coordinate model [i](#)



The images above show the model with each residue coloured according to its atom inclusion. This shows to what extent they are inside the map at the recommended contour level (0.055).

9.4 Atom inclusion [i](#)



At the recommended contour level, 74% of all backbone atoms, 60% of all non-hydrogen atoms, are inside the map.

9.5 Map-model fit summary ⓘ

The table lists the average atom inclusion at the recommended contour level (0.055) and Q-score for the entire model and for each chain.

Chain	Atom inclusion	Q-score
All	<div></div> 0.6040	<div></div> 0.1600
A	<div></div> 0.6510	<div></div> 0.1570
B	<div></div> 0.5820	<div></div> 0.1570
C	<div></div> 0.6490	<div></div> 0.1630
D	<div></div> 0.6440	<div></div> 0.1680
E	<div></div> 0.1430	<div></div> 0.3020
F	<div></div> 0.4080	<div></div> 0.1570
G	<div></div> 0.3070	<div></div> 0.1310
H	<div></div> 0.2500	<div></div> 0.1770
I	<div></div> 0.0710	<div></div> 0.1920
J	<div></div> 0.0000	<div></div> 0.1690

1.0
0.0
<0.0