



## Full wwPDB EM Validation Report ⓘ

Mar 28, 2026 – 05:52 AM UTC

PDB ID : 7TC7 / pdb\_00007tc7  
EMDB ID : EMD-25804  
Title : Cryo-EM structure of methane monooxygenase hydroxylase (by quantifoil)  
Authors : Cho, U.S.; Kim, B.C.  
Deposited on : 2021-12-23  
Resolution : 2.90 Å(reported)

This is a Full wwPDB EM Validation Report for a publicly released PDB entry.

We welcome your comments at [validation@mail.wwpdb.org](mailto:validation@mail.wwpdb.org)

A user guide is available at

<https://www.wwpdb.org/validation/2017/EMValidationReportHelp>

with specific help available everywhere you see the ⓘ symbol.

The types of validation reports are described at

<http://www.wwpdb.org/validation/2017/FAQs#types>.

---

The following versions of software and data (see [references ⓘ](#)) were used in the production of this report:

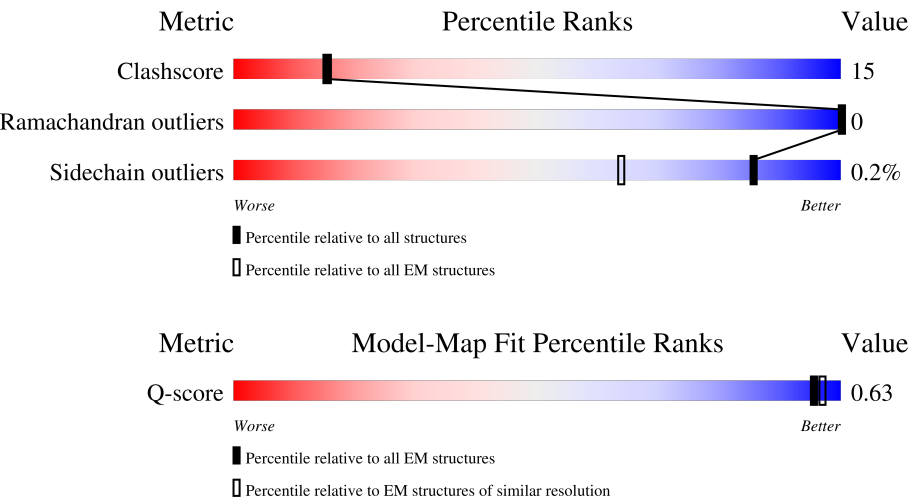
EMDB validation analysis : 0.0.1.dev132  
MolProbity : 4-5-2 with Phenix2.0  
Percentile statistics : 20250101.v01 (using entries in the PDB archive January 1st 2025)  
EM percentile statistics : 202505.v01 (Using data in the EMDB archive up until May 2025)  
MapQ : 1.9.13  
Ideal geometry (proteins) : Engh & Huber (2001)  
Ideal geometry (DNA, RNA) : Parkinson et al. (1996)  
Validation Pipeline (wwPDB-VP) : 2.49

# 1 Overall quality at a glance i

The following experimental techniques were used to determine the structure:  
*ELECTRON MICROSCOPY*

The reported resolution of this entry is 2.90 Å.

Percentile scores (ranging between 0-100) for global validation metrics of the entry are shown in the following graphic. The table shows the number of entries on which the scores are based.



Metric	Whole archive (#Entries)	EM structures (#Entries)	Similar EM resolution (#Entries, resolution range(Å))
Clashscore	229148	23984	-
Ramachandran outliers	224038	23583	-
Sidechain outliers	223484	23102	-
Q-score	-	25397	13054 ( 2.40 - 3.40 )

The table below summarises the geometric issues observed across the polymeric chains and their fit to the map. The red, orange, yellow and green segments of the bar indicate the fraction of residues that contain outliers for  $\geq 3$ , 2, 1 and 0 types of geometric quality criteria respectively. A grey segment represents the fraction of residues that are not modelled. The numeric value for each fraction is indicated below the corresponding segment, with a dot representing fractions  $\leq 5\%$ . The upper red bar (where present) indicates the fraction of residues that have poor fit to the EM map (all-atom inclusion  $< 40\%$ ). The numeric value is given above the bar.

Mol	Chain	Length	Quality of chain
1	D	527	<div><div></div><div>65%31%.</div></div>
1	E	527	<div><div></div><div>65%31%..</div></div>
2	B	389	<div><div></div><div>67%32%.</div></div>
2	C	389	<div><div></div><div>73%26%.</div></div>

Continued on next page...

Continued from previous page...

Mol	Chain	Length	Quality of chain
3	G	170	<div><div></div><div>72%24%5%</div></div>
3	H	170	<div><div></div><div>67%28%5%</div></div>

## 2 Entry composition

There are 4 unique types of molecules in this entry. The entry contains 20567 atoms, of which 3200 are hydrogens and 0 are deuteriums.

In the tables below, the AltConf column contains the number of residues with at least one atom in alternate conformation and the Trace column contains the number of residues modelled with at most 2 atoms.

- Molecule 1 is a protein called Methane monooxygenase component A alpha chain.

Mol	Chain	Residues	Atoms						AltConf	Trace
1	D	510	Total	C	H	N	O	S	0	0
			5106	2673	930	721	764	18		
1	E	511	Total	C	H	N	O	S	0	0
			5112	2676	931	722	765	18		

- Molecule 2 is a protein called Methane monooxygenase component A beta chain.

Mol	Chain	Residues	Atoms						AltConf	Trace
2	B	384	Total	C	N	O	S		0	0
			3167	2038	547	575	7			
2	C	384	Total	C	H	N	O	S	0	0
			3872	2038	705	547	575	7		

- Molecule 3 is a protein called Methane monooxygenase component A gamma chain.

Mol	Chain	Residues	Atoms						AltConf	Trace
3	G	162	Total	C	H	N	O	S	0	0
			1653	847	317	240	244	5		
3	H	162	Total	C	H	N	O	S	0	0
			1653	847	317	240	244	5		

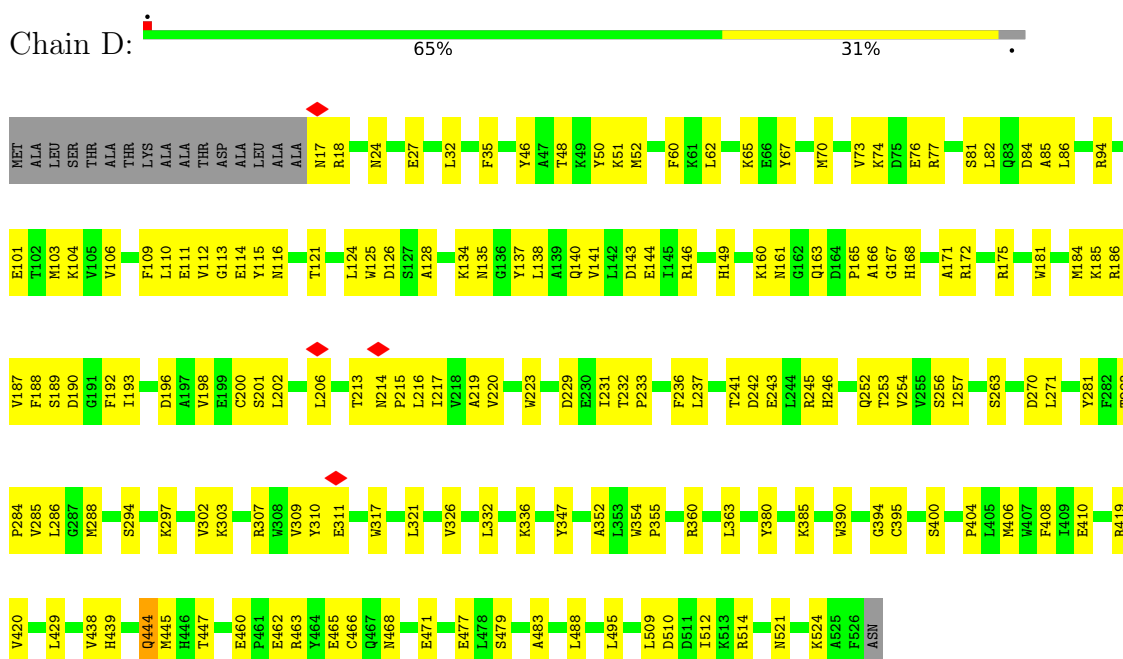
- Molecule 4 is FE (III) ION (CCD ID: FE) (formula: Fe) (labeled as "Ligand of Interest" by depositor).

Mol	Chain	Residues	Atoms		AltConf
4	D	2	Total	Fe	0
			2	2	
4	E	2	Total	Fe	0
			2	2	

### 3 Residue-property plots

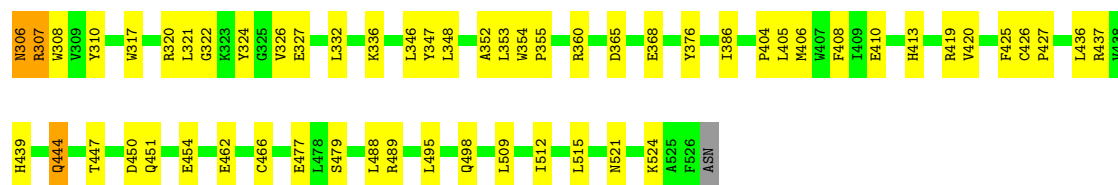
These plots are drawn for all protein, RNA, DNA and oligosaccharide chains in the entry. The first graphic for a chain summarises the proportions of the various outlier classes displayed in the second graphic. The second graphic shows the sequence view annotated by issues in geometry and atom inclusion in map density. Residues are color-coded according to the number of geometric quality criteria for which they contain at least one outlier: green = 0, yellow = 1, orange = 2 and red = 3 or more. A red diamond above a residue indicates a poor fit to the EM map for this residue (all-atom inclusion < 40%). Stretches of 2 or more consecutive residues without any outlier are shown as a green connector. Residues present in the sample, but not in the model, are shown in grey.

- Molecule 1: Methane monooxygenase component A alpha chain

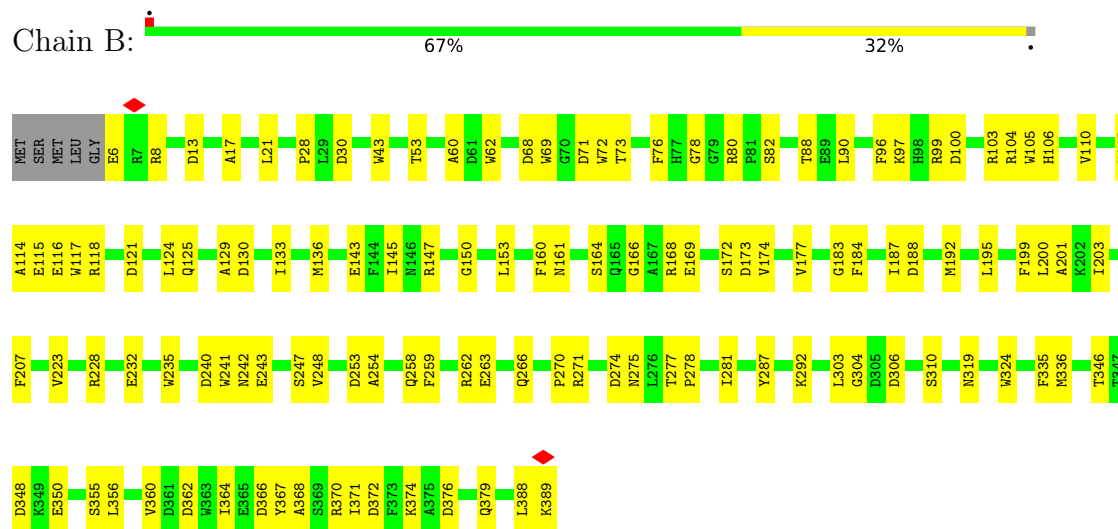


- Molecule 1: Methane monooxygenase component A alpha chain





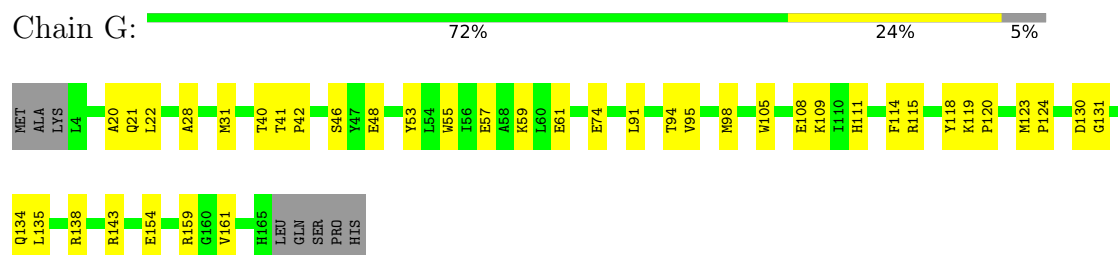
• Molecule 2: Methane monooxygenase component A beta chain



• Molecule 2: Methane monooxygenase component A beta chain



• Molecule 3: Methane monooxygenase component A gamma chain



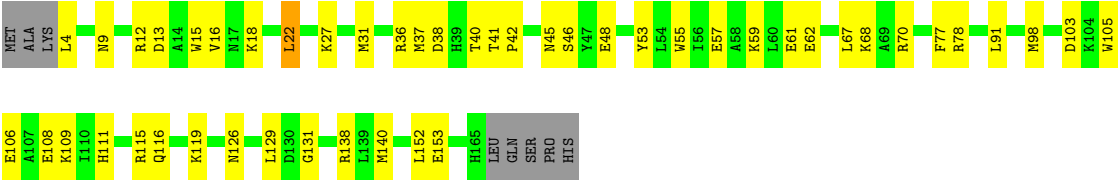
• Molecule 3: Methane monooxygenase component A gamma chain

Chain H: 

67%

28%

• 5%



## 4 Experimental information

Property	Value	Source
EM reconstruction method	SINGLE PARTICLE	Depositor
Imposed symmetry	POINT, Not provided	
Number of particles used	479000	Depositor
Resolution determination method	FSC 0.5 CUT-OFF	Depositor
CTF correction method	PHASE FLIPPING ONLY	Depositor
Microscope	FEI TITAN KRIOS	Depositor
Voltage (kV)	300	Depositor
Electron dose ( $e^-/\text{\AA}^2$ )	49	Depositor
Minimum defocus (nm)	600	Depositor
Maximum defocus (nm)	1900	Depositor
Magnification	81000	Depositor
Image detector	GATAN K3 (6k x 4k)	Depositor
Maximum map value	4.781	Depositor
Minimum map value	-2.672	Depositor
Average map value	0.001	Depositor
Map value standard deviation	0.189	Depositor
Recommended contour level	0.8	Depositor
Map size ( $\text{\AA}$ )	263.04, 263.04, 263.04	wwPDB
Map dimensions	256, 256, 256	wwPDB
Map angles ( $^\circ$ )	90.0, 90.0, 90.0	wwPDB
Pixel spacing ( $\text{\AA}$ )	1.0275, 1.0275, 1.0275	Depositor



## 5 Model quality

### 5.1 Standard geometry

Bond lengths and bond angles in the following residue types are not validated in this section: FE

The Z score for a bond length (or angle) is the number of standard deviations the observed value is removed from the expected value. A bond length (or angle) with  $|Z| > 5$  is considered an outlier worth inspection. RMSZ is the root-mean-square of all Z scores of the bond lengths (or angles).

Mol	Chain	Bond lengths		Bond angles	
		RMSZ	$\# Z  > 5$	RMSZ	$\# Z  > 5$
1	D	0.33	3/4301 (0.1%)	0.35	0/5842
1	E	0.60	11/4306 (0.3%)	0.40	0/5849
2	B	0.21	0/3263	0.30	0/4430
2	C	0.22	0/3263	0.30	0/4430
3	G	0.46	4/1364 (0.3%)	0.37	1/1838 (0.1%)
3	H	0.39	2/1364 (0.1%)	0.35	1/1838 (0.1%)
All	All	0.40	20/17861 (0.1%)	0.35	2/24227 (0.0%)

All (20) bond length outliers are listed below:

Mol	Chain	Res	Type	Atoms	Z	Observed(Å)	Ideal(Å)
1	E	444	GLN	C-O	-13.20	1.07	1.23
1	E	305	TRP	C-O	-12.37	1.09	1.24
1	E	307	ARG	C-O	-12.26	1.09	1.24
1	D	444	GLN	C-O	-11.69	1.09	1.23
1	E	306	ASN	C-O	-11.37	1.10	1.24
1	E	305	TRP	CA-C	-11.03	1.39	1.52
3	G	21	GLN	CA-CB	-7.67	1.42	1.53
1	E	306	ASN	CA-CB	-7.63	1.41	1.53
3	H	22	LEU	CA-C	-7.20	1.43	1.52
1	D	444	GLN	CD-NE2	-6.96	1.18	1.33
1	E	306	ASN	CB-CG	-6.89	1.34	1.52
1	E	307	ARG	CZ-NH2	-6.66	1.24	1.33
1	D	444	GLN	CD-OE1	-6.37	1.11	1.23
3	H	22	LEU	C-O	-6.26	1.16	1.23
3	G	21	GLN	N-CA	-6.19	1.38	1.46
1	E	444	GLN	CD-NE2	-5.87	1.21	1.33
3	G	20	ALA	C-N	-5.64	1.26	1.33
1	E	305	TRP	CD2-CE2	-5.56	1.31	1.41
1	E	305	TRP	N-CA	-5.54	1.39	1.46
3	G	21	GLN	C-O	-5.47	1.17	1.24

All (2) bond angle outliers are listed below:

Mol	Chain	Res	Type	Atoms	Z	Observed(°)	Ideal(°)
3	G	21	GLN	N-CA-CB	-5.24	102.89	110.70
3	H	22	LEU	CB-CG-CD2	-5.18	95.15	110.70

There are no chirality outliers.

There are no planarity outliers.

## 5.2 Too-close contacts ⓘ

In the following table, the Non-H and H(model) columns list the number of non-hydrogen atoms and hydrogen atoms in the chain respectively. The H(added) column lists the number of hydrogen atoms added and optimized by MolProbity. The Clashes column lists the number of clashes within the asymmetric unit, whereas Symm-Clashes lists symmetry-related clashes.

Mol	Chain	Non-H	H(model)	H(added)	Clashes	Symm-Clashes
1	D	4176	930	3979	162	0
1	E	4181	931	3984	160	0
2	B	3167	0	3014	107	0
2	C	3167	705	3014	86	0
3	G	1336	317	1326	32	0
3	H	1336	317	1326	42	0
4	D	2	0	0	0	0
4	E	2	0	0	0	0
All	All	17367	3200	16643	500	0

The all-atom clashscore is defined as the number of clashes found per 1000 atoms (including hydrogen atoms). The all-atom clashscore for this structure is 15.

All (500) close contacts within the same asymmetric unit are listed below, sorted by their clash magnitude.

Atom-1	Atom-2	Interatomic distance (Å)	Clash overlap (Å)
1:D:77:ARG:HB3	1:E:84:ASP:OD2	1.32	1.23
3:H:22:LEU:HD23	3:H:27:LYS:HE3	1.37	1.01
2:B:270:PRO:HB3	2:C:270:PRO:HB3	1.47	0.97
1:E:165:PRO:HG2	2:C:30:ASP:HB3	1.48	0.94
3:H:40:THR:O	3:H:41:THR:HG23	1.69	0.92
1:E:113:GLY:HA2	1:E:188:PHE:HB3	1.51	0.92
1:D:460:GLU:HG3	1:D:463:ARG:HD3	1.52	0.90
3:G:40:THR:O	3:G:41:THR:HG23	1.69	0.90
1:D:84:ASP:OD2	1:E:77:ARG:HG2	1.71	0.89

*Continued on next page...*

*Continued from previous page...*

Atom-1	Atom-2	Interatomic distance (Å)	Clash overlap (Å)
1:D:477:GLU:OE1	1:D:479:SER:OG	1.90	0.88
2:B:78:GLY:HA3	3:G:111:HIS:HD2	1.39	0.87
1:E:17:ASN:O	1:E:18:ARG:HG2	1.77	0.85
1:E:477:GLU:OE1	1:E:479:SER:OG	1.94	0.85
1:D:439:HIS:HB3	3:G:161:VAL:HG11	1.58	0.84
2:B:78:GLY:HA3	3:G:111:HIS:CD2	2.14	0.82
3:G:40:THR:HG22	3:G:53:TYR:HD2	1.44	0.82
1:D:113:GLY:HA2	1:D:188:PHE:HB3	1.62	0.82
1:D:184:MET:HE1	1:D:188:PHE:CD2	2.14	0.82
3:H:40:THR:HG22	3:H:53:TYR:HD2	1.44	0.81
1:E:306:ASN:ND2	1:E:336:LYS:HE2	1.95	0.81
3:H:57:GLU:O	3:H:61:GLU:HG3	1.80	0.80
1:E:352:ALA:HA	1:E:404:PRO:HB2	1.61	0.80
1:E:62:LEU:HD11	1:E:70:MET:HE1	1.61	0.80
1:D:465:GLU:OE2	3:G:42:PRO:HD3	1.81	0.79
1:D:109:PHE:CD2	1:D:184:MET:HG2	2.18	0.79
1:D:439:HIS:HB3	3:G:161:VAL:CG1	2.12	0.78
3:H:40:THR:HG22	3:H:53:TYR:CD2	2.18	0.77
1:D:77:ARG:CB	1:E:84:ASP:OD2	2.24	0.76
3:G:40:THR:HG22	3:G:53:TYR:CD2	2.20	0.76
1:D:84:ASP:OD1	1:E:77:ARG:HD3	1.86	0.75
2:B:275:ASN:ND2	2:C:266:GLN:OE1	2.20	0.74
1:E:194:SER:OG	2:C:82:SER:OG	2.03	0.74
1:D:206:LEU:HD11	1:D:321:LEU:HD11	1.70	0.74
1:D:24:ASN:OD1	1:D:27:GLU:HG3	1.88	0.74
2:B:350:GLU:N	2:B:350:GLU:OE2	2.20	0.74
1:E:18:ARG:HB2	2:C:128:SER:O	1.88	0.73
2:B:100:ASP:OD2	2:B:104:ARG:HG2	1.89	0.73
3:G:98:MET:HG3	3:G:138:ARG:HG2	1.71	0.72
1:E:419:ARG:NH1	1:E:466:CYS:O	2.23	0.72
2:B:271:ARG:NH1	2:B:346:THR:O	2.23	0.72
1:D:62:LEU:CD1	1:D:70:MET:HE1	2.20	0.71
1:D:406:MET:O	1:D:410:GLU:HG3	1.90	0.71
1:D:50:TYR:OH	1:D:270:ASP:OD1	2.06	0.71
1:D:352:ALA:HA	1:D:404:PRO:HB2	1.71	0.71
1:D:17:ASN:O	1:D:18:ARG:HG2	1.91	0.70
1:D:84:ASP:OD1	1:E:77:ARG:CD	2.39	0.70
1:E:521:ASN:HB3	1:E:524:LYS:HG2	1.73	0.69
1:D:73:VAL:O	1:D:76:GLU:HG2	1.92	0.69
1:E:121:THR:HG22	1:E:141:VAL:HG23	1.74	0.69
1:E:202:LEU:HD22	1:E:206:LEU:HD23	1.73	0.69

*Continued on next page...*

*Continued from previous page...*

Atom-1	Atom-2	Interatomic distance (Å)	Clash overlap (Å)
1:D:143:ASP:OD2	1:D:245:ARG:NH2	2.26	0.69
3:G:46:SER:OG	3:G:48:GLU:HG3	1.92	0.69
1:E:206:LEU:HD23	1:E:271:LEU:HD13	1.75	0.68
1:D:438:VAL:HG22	1:D:447:THR:HG22	1.75	0.68
1:E:202:LEU:HD22	1:E:206:LEU:CD2	2.22	0.68
1:D:429:LEU:HD23	1:D:429:LEU:O	1.94	0.68
1:D:216:LEU:HD13	1:D:286:LEU:CD1	2.24	0.67
2:B:115:GLU:HG2	2:C:115:GLU:HG2	1.76	0.67
1:D:81:SER:OG	1:E:85:ALA:HB2	1.94	0.67
1:D:187:VAL:HG11	1:D:281:TYR:HB3	1.76	0.67
1:E:215:PRO:HB2	1:E:308:TRP:CE2	2.29	0.67
1:E:186:ARG:NH1	1:E:277:THR:HG23	2.10	0.67
1:D:109:PHE:CG	1:D:184:MET:HG2	2.29	0.67
1:D:109:PHE:O	1:D:112:VAL:HG12	1.93	0.67
1:D:216:LEU:O	1:D:220:VAL:HG23	1.94	0.66
1:E:72:ALA:O	1:E:76:GLU:HG2	1.94	0.66
2:B:145:ILE:HD11	2:B:274:ASP:OD2	1.95	0.66
2:B:292:LYS:HG3	2:B:367:TYR:OH	1.94	0.66
2:C:167:ALA:O	2:C:176:ARG:NH1	2.29	0.66
2:C:170:ALA:O	2:C:176:ARG:NH2	2.28	0.66
1:D:307:ARG:O	1:D:311:GLU:HB2	1.95	0.66
1:D:121:THR:HG22	1:D:141:VAL:HG23	1.78	0.65
1:E:22:SER:O	2:C:202:LYS:NZ	2.26	0.65
1:E:82:LEU:HD21	1:E:231:ILE:HG23	1.78	0.65
1:D:468:ASN:OD1	1:D:471:GLU:HG3	1.95	0.65
3:H:105:TRP:O	3:H:108:GLU:HG2	1.96	0.65
3:G:105:TRP:O	3:G:108:GLU:HG2	1.96	0.65
1:E:109:PHE:O	1:E:112:VAL:HG12	1.96	0.65
1:E:210:ALA:HA	1:E:247:MET:HE1	1.79	0.65
3:H:37:MET:CE	3:H:116:GLN:HB3	2.27	0.65
1:D:62:LEU:HD13	1:D:70:MET:HE1	1.78	0.64
2:B:247:SER:HG	2:B:324:TRP:CD1	2.16	0.64
2:C:310:SER:O	2:C:314:ARG:HG2	1.98	0.63
1:D:216:LEU:HD13	1:D:286:LEU:HD13	1.79	0.63
2:C:248:VAL:O	2:C:253:ASP:HB2	1.99	0.63
1:D:140:GLN:O	1:D:144:GLU:HG2	1.99	0.63
3:H:18:LYS:HE3	3:H:31:MET:CE	2.28	0.63
1:D:460:GLU:HG3	1:D:463:ARG:CD	2.26	0.63
1:E:310:TYR:CE1	1:E:332:LEU:HG	2.34	0.63
1:E:206:LEU:HD12	1:E:317:TRP:HE1	1.63	0.62
2:C:259:PHE:CE2	2:C:336:MET:HE1	2.34	0.62

*Continued on next page...*

*Continued from previous page...*

Atom-1	Atom-2	Interatomic distance (Å)	Clash overlap (Å)
2:B:76:PHE:HB2	2:B:80:ARG:HB3	1.82	0.62
1:D:488:LEU:HD21	1:D:509:LEU:HD13	1.81	0.62
3:G:159:ARG:HG3	3:G:161:VAL:HG23	1.81	0.62
3:G:22:LEU:HD13	3:G:28:ALA:HA	1.81	0.62
1:D:84:ASP:CG	1:E:77:ARG:HG2	2.24	0.62
1:D:65:LYS:HE3	2:B:188:ASP:OD2	1.99	0.61
1:E:140:GLN:O	1:E:144:GLU:HG2	2.01	0.61
2:C:262:ARG:NH1	2:C:263:GLU:OE2	2.34	0.61
1:E:116:ASN:CG	1:E:189:SER:HA	2.26	0.61
1:E:190:ASP:OD2	2:C:73:THR:OG1	2.16	0.61
3:H:36:ARG:NH2	3:H:61:GLU:OE1	2.34	0.61
1:E:16:ALA:HB1	2:B:362:ASP:OD2	2.00	0.60
1:D:462:GLU:HA	3:G:42:PRO:HG3	1.83	0.60
1:E:406:MET:O	1:E:410:GLU:HG3	2.01	0.60
1:D:190:ASP:OD2	2:B:73:THR:OG1	2.11	0.60
1:E:16:ALA:HB1	2:B:362:ASP:CG	2.27	0.60
1:E:288:MET:HG3	1:E:347:TYR:HB2	1.84	0.60
1:D:214:ASN:HB2	1:D:215:PRO:HD3	1.83	0.59
1:D:86:LEU:HD13	1:D:231:ILE:HD13	1.84	0.59
2:C:313:ASN:O	2:C:317:MET:HG3	2.02	0.59
2:C:319:ASN:OD1	3:H:78:ARG:NH1	2.35	0.59
2:B:133:ILE:HD12	2:B:136:MET:HE3	1.84	0.59
2:B:130:ASP:OD1	2:C:262:ARG:HD3	2.02	0.59
3:G:55:TRP:CZ2	3:G:59:LYS:HE2	2.38	0.59
1:D:185:LYS:O	1:D:189:SER:HB2	2.03	0.58
2:B:90:LEU:HD13	2:B:303:LEU:HD13	1.84	0.58
2:C:130:ASP:OD2	2:C:132:GLN:HG3	2.04	0.58
2:C:247:SER:HG	2:C:324:TRP:CD1	2.21	0.58
1:D:110:LEU:O	1:D:114:GLU:HG2	2.03	0.58
1:E:113:GLY:CA	1:E:188:PHE:HB3	2.30	0.58
1:D:380:TYR:CE2	1:D:385:LYS:HE3	2.38	0.58
2:B:188:ASP:O	2:B:192:MET:HG2	2.04	0.58
1:D:303:LYS:HE2	1:D:303:LYS:HA	1.86	0.58
1:E:110:LEU:O	1:E:114:GLU:HG2	2.04	0.58
1:E:206:LEU:HD11	1:E:321:LEU:HD12	1.86	0.58
1:E:216:LEU:HD13	1:E:286:LEU:HD13	1.85	0.57
2:B:248:VAL:O	2:B:253:ASP:HB2	2.04	0.57
2:C:116:GLU:OE1	2:C:287:TYR:OH	2.14	0.57
3:H:12:ARG:O	3:H:16:VAL:HG13	2.04	0.57
2:B:259:PHE:CZ	2:B:336:MET:HE1	2.39	0.57
2:B:97:LYS:HZ3	2:B:97:LYS:HB2	1.69	0.57

*Continued on next page...*

*Continued from previous page...*

Atom-1	Atom-2	Interatomic distance (Å)	Clash overlap (Å)
1:E:214:ASN:HD22	1:E:247:MET:HE2	1.70	0.57
1:E:360:ARG:HG2	1:E:498:GLN:HB2	1.87	0.57
1:D:103:MET:HE2	1:D:232:THR:OG1	2.05	0.57
1:D:116:ASN:CG	1:D:189:SER:HA	2.29	0.57
1:D:229:ASP:OD2	1:D:232:THR:OG1	2.19	0.57
2:B:364:ILE:HA	2:B:368:ALA:HB3	1.86	0.57
1:D:138:LEU:HD22	2:B:160:PHE:CZ	2.40	0.57
3:H:13:ASP:O	3:H:16:VAL:HG22	2.04	0.56
2:B:166:GLY:HA2	2:B:241:TRP:HB2	1.87	0.56
2:B:266:GLN:HB2	2:B:281:ILE:HG21	1.87	0.56
3:G:118:TYR:HB3	3:G:123:MET:HE3	1.87	0.56
1:E:306:ASN:HD22	1:E:336:LYS:HE2	1.67	0.56
2:B:118:ARG:HD3	2:C:115:GLU:OE2	2.05	0.56
2:B:277:THR:HB	2:B:278:PRO:HD3	1.88	0.56
2:C:160:PHE:CD1	2:C:187:ILE:HB	2.40	0.56
1:E:310:TYR:OH	1:E:336:LYS:HB2	2.05	0.56
1:E:213:THR:O	1:E:217:ILE:HG12	2.05	0.56
1:E:437:ARG:HH12	1:E:451:GLN:HA	1.70	0.56
3:H:37:MET:HE2	3:H:116:GLN:HB3	1.88	0.56
1:D:125:TRP:CZ3	2:B:164:SER:HA	2.41	0.56
1:D:67:TYR:HA	1:D:70:MET:HE3	1.88	0.55
1:D:121:THR:CG2	1:D:141:VAL:HG23	2.36	0.55
2:B:8:ARG:NH1	2:B:13:ASP:OD2	2.39	0.55
2:B:71:ASP:OD1	2:B:72:TRP:N	2.37	0.55
2:C:42:ARG:HB2	2:C:99:ARG:HG3	1.88	0.55
1:D:206:LEU:HD11	1:D:321:LEU:CD1	2.35	0.55
1:E:45:LYS:HD3	2:C:165:GLN:HE21	1.71	0.55
2:B:168:ARG:HD2	2:B:168:ARG:O	2.06	0.55
1:D:73:VAL:HG12	1:D:77:ARG:NH1	2.22	0.55
3:G:57:GLU:OE2	3:G:119:LYS:NZ	2.37	0.55
1:D:67:TYR:HA	1:D:70:MET:CE	2.37	0.55
1:D:167:GLY:O	1:D:171:ALA:HB2	2.07	0.55
3:H:22:LEU:HD11	3:H:31:MET:SD	2.47	0.55
2:B:96:PHE:O	2:B:99:ARG:NH1	2.37	0.55
1:E:276:TRP:NE1	1:E:450:ASP:OD2	2.36	0.55
1:E:322:GLY:HA2	1:E:326:VAL:O	2.07	0.54
1:E:101:GLU:OE2	1:E:360:ARG:NH1	2.40	0.54
1:E:281:TYR:CZ	1:E:285:VAL:HG21	2.42	0.54
2:C:201:ALA:HA	2:C:207:PHE:HB3	1.88	0.54
1:D:140:GLN:HG3	1:D:246:HIS:CD2	2.43	0.54
2:C:86:GLU:OE1	3:H:119:LYS:HD2	2.07	0.54

*Continued on next page...*

*Continued from previous page...*

Atom-1	Atom-2	Interatomic distance (Å)	Clash overlap (Å)
1:E:125:TRP:CZ3	2:C:164:SER:HA	2.42	0.54
2:C:104:ARG:NH1	2:C:290:ILE:HG21	2.23	0.54
1:D:52:MET:HG2	1:D:256:SER:OG	2.08	0.54
1:D:50:TYR:O	1:D:51:LYS:HE2	2.07	0.54
1:D:125:TRP:CZ2	2:B:160:PHE:CZ	2.96	0.54
2:B:160:PHE:CD1	2:B:187:ILE:HB	2.42	0.54
1:D:213:THR:O	1:D:217:ILE:HG12	2.08	0.54
2:B:145:ILE:HG21	2:B:200:LEU:HD11	1.89	0.54
2:C:263:GLU:HB3	2:C:355:SER:HB2	1.90	0.53
3:H:46:SER:OG	3:H:48:GLU:HG3	2.07	0.53
1:D:85:ALA:HB2	1:E:81:SER:OG	2.08	0.53
1:D:137:TYR:OH	1:D:253:THR:OG1	2.09	0.53
2:B:270:PRO:HB3	2:C:270:PRO:CB	2.30	0.53
1:E:488:LEU:CD2	1:E:495:LEU:HD23	2.38	0.53
2:B:80:ARG:NH2	2:B:169:GLU:OE2	2.41	0.53
1:D:439:HIS:CB	3:G:161:VAL:HG11	2.36	0.53
1:D:462:GLU:OE2	3:G:143:ARG:NH1	2.33	0.53
1:E:268:ASN:OD1	1:E:327:GLU:HG2	2.09	0.53
3:G:119:LYS:HG2	3:G:120:PRO:HD2	1.89	0.53
1:D:310:TYR:CZ	1:D:336:LYS:HD2	2.44	0.53
1:E:109:PHE:HB3	1:E:184:MET:HE2	1.90	0.53
1:E:454:GLU:OE2	3:H:152:LEU:HD13	2.09	0.53
2:C:364:ILE:HA	2:C:368:ALA:HB3	1.89	0.53
1:D:192:PHE:O	1:D:200:CYS:HB3	2.09	0.52
2:C:292:LYS:HG3	2:C:367:TYR:OH	2.09	0.52
1:D:113:GLY:CA	1:D:188:PHE:HB3	2.39	0.52
1:E:192:PHE:O	1:E:200:CYS:HB3	2.10	0.52
2:B:201:ALA:HA	2:B:207:PHE:HB3	1.90	0.52
1:E:230:GLU:HG3	2:C:11:LEU:HD22	1.92	0.52
1:E:255:VAL:HG22	1:E:324:TYR:CZ	2.45	0.52
2:B:43:TRP:CZ3	2:B:103:ARG:HD3	2.45	0.52
2:B:116:GLU:OE1	2:B:287:TYR:OH	2.09	0.52
1:E:217:ILE:O	1:E:221:THR:HG23	2.10	0.52
1:D:82:LEU:HD21	1:D:231:ILE:HG23	1.91	0.52
2:B:304:GLY:O	2:B:310:SER:OG	2.21	0.52
1:D:109:PHE:HB3	1:D:184:MET:HE2	1.91	0.51
1:D:294:SER:O	1:D:297:LYS:NZ	2.43	0.51
1:E:284:PRO:HB2	1:E:346:LEU:HD22	1.91	0.51
1:E:495:LEU:HD11	1:E:512:ILE:HG13	1.92	0.51
3:H:15:TRP:HZ3	3:H:31:MET:HE2	1.75	0.51
1:D:51:LYS:HE2	1:D:51:LYS:HA	1.93	0.51

*Continued on next page...*



*Continued from previous page...*

Atom-1	Atom-2	Interatomic distance (Å)	Clash overlap (Å)
1:E:116:ASN:HB2	1:E:188:PHE:O	2.11	0.51
1:D:94:ARG:NH2	2:B:21:LEU:HD11	2.25	0.51
2:B:143:GLU:O	2:B:147:ARG:HB3	2.10	0.51
1:E:185:LYS:O	1:E:189:SER:HB2	2.11	0.51
2:B:17:ALA:O	2:B:21:LEU:HG	2.09	0.51
2:C:240:ASP:HB3	2:C:243:GLU:HB3	1.92	0.51
1:D:521:ASN:HB3	1:D:524:LYS:HG2	1.93	0.51
1:E:320:ARG:HH11	1:E:320:ARG:HB2	1.76	0.51
2:C:259:PHE:CZ	2:C:336:MET:HE1	2.46	0.51
1:D:363:LEU:HD11	1:D:395:CYS:SG	2.50	0.51
1:E:125:TRP:CZ2	2:C:160:PHE:CZ	2.99	0.51
1:E:163:GLN:O	2:C:28:PRO:HA	2.10	0.51
1:E:121:THR:CG2	1:E:141:VAL:HG23	2.40	0.51
1:D:198:VAL:O	1:D:202:LEU:HG	2.11	0.51
1:E:112:VAL:HG21	1:E:181:TRP:HH2	1.74	0.51
2:B:90:LEU:CD1	2:B:303:LEU:HD13	2.40	0.51
1:D:65:LYS:HB3	2:B:117:TRP:HB2	1.93	0.51
1:D:160:LYS:HG3	1:D:161:ASN:CG	2.36	0.51
1:E:288:MET:SD	1:E:347:TYR:HA	2.51	0.51
1:E:124:LEU:HD21	1:E:201:SER:HB2	1.92	0.51
1:E:164:ASP:OD1	1:E:489:ARG:NH2	2.44	0.51
1:E:291:GLU:OE2	1:E:376:TYR:OH	2.18	0.51
3:G:130:ASP:OD1	3:G:134:GLN:NE2	2.42	0.51
1:D:128:ALA:O	1:D:134:LYS:HE2	2.12	0.50
1:E:215:PRO:HB2	1:E:308:TRP:NE1	2.26	0.50
1:E:300:PRO:HG2	1:E:303:LYS:HE2	1.94	0.50
1:E:306:ASN:HD21	1:E:336:LYS:HE2	1.74	0.50
2:B:124:LEU:HD11	2:B:195:LEU:HD21	1.92	0.50
2:B:173:ASP:OD1	2:B:174:VAL:N	2.44	0.50
2:C:166:GLY:HA2	2:C:241:TRP:HB2	1.93	0.50
2:C:239:PHE:HB2	3:H:126:ASN:HA	1.92	0.50
1:D:124:LEU:HD21	1:D:201:SER:HB2	1.92	0.50
2:C:165:GLN:OE1	2:C:169:GLU:HG3	2.11	0.50
1:E:186:ARG:HD2	1:E:420:VAL:O	2.12	0.50
2:C:100:ASP:OD2	2:C:104:ARG:HB3	2.12	0.50
1:D:206:LEU:HD12	1:D:317:TRP:HE1	1.76	0.50
1:E:202:LEU:HD12	1:E:270:ASP:HB3	1.94	0.50
3:G:22:LEU:HD11	3:G:31:MET:SD	2.51	0.50
1:D:310:TYR:OH	1:D:336:LYS:HB2	2.12	0.50
1:E:310:TYR:CE2	1:E:336:LYS:HE3	2.47	0.50
2:B:199:PHE:CE2	2:B:203:ILE:HD13	2.47	0.50

*Continued on next page...*



*Continued from previous page...*

Atom-1	Atom-2	Interatomic distance (Å)	Clash overlap (Å)
2:B:161:ASN:HB3	2:B:235:TRP:CE2	2.47	0.50
2:B:184:PHE:O	2:B:187:ILE:HG22	2.12	0.50
2:C:269:ALA:HB3	2:C:270:PRO:HD3	1.93	0.50
1:E:138:LEU:HD22	2:C:160:PHE:CZ	2.47	0.49
1:D:81:SER:HA	1:E:81:SER:HA	1.95	0.49
1:E:54:ASN:O	1:E:55:GLU:HB2	2.12	0.49
1:E:488:LEU:HD23	1:E:495:LEU:HD23	1.93	0.49
3:H:55:TRP:CZ2	3:H:59:LYS:HE2	2.47	0.49
1:D:125:TRP:HZ3	2:B:164:SER:HA	1.77	0.49
1:E:206:LEU:HD11	1:E:321:LEU:CD1	2.42	0.49
1:E:207:VAL:HG11	1:E:275:PHE:HA	1.93	0.49
2:B:356:LEU:O	2:B:360:VAL:HG23	2.12	0.49
2:C:319:ASN:HD21	3:H:78:ARG:HG3	1.77	0.49
1:E:243:GLU:O	1:E:247:MET:HG2	2.12	0.49
2:B:68:ASP:OD1	2:B:69:TRP:N	2.42	0.49
2:B:274:ASP:OD2	2:B:277:THR:OG1	2.28	0.49
2:C:53:THR:HG22	2:C:173:ASP:OD1	2.12	0.49
2:B:115:GLU:OE2	2:C:118:ARG:HD3	2.13	0.49
2:C:71:ASP:OD1	2:C:72:TRP:N	2.43	0.49
1:D:165:PRO:HD2	2:B:30:ASP:HB3	1.94	0.49
1:E:187:VAL:HG11	1:E:281:TYR:HB3	1.94	0.49
1:E:240:GLU:OE1	1:E:240:GLU:HA	2.12	0.49
2:B:145:ILE:HG21	2:B:200:LEU:CD1	2.42	0.49
1:D:466:CYS:HB2	2:B:73:THR:HA	1.95	0.49
1:E:144:GLU:OE1	1:E:144:GLU:HA	2.13	0.49
2:C:262:ARG:HA	2:C:266:GLN:HB3	1.93	0.49
2:B:173:ASP:O	2:B:177:VAL:HG23	2.13	0.49
2:B:130:ASP:CG	2:C:262:ARG:HD3	2.38	0.48
2:B:150:GLY:O	2:B:153:LEU:HG	2.12	0.48
1:D:125:TRP:HZ2	2:B:160:PHE:CE2	2.31	0.48
1:E:198:VAL:O	1:E:202:LEU:HG	2.13	0.48
3:G:115:ARG:O	3:G:119:LYS:HB2	2.12	0.48
2:C:277:THR:HB	2:C:278:PRO:HD3	1.95	0.48
3:G:57:GLU:O	3:G:61:GLU:HG3	2.12	0.48
1:D:32:LEU:HD12	1:D:35:PHE:CD2	2.48	0.48
1:E:202:LEU:HD22	1:E:206:LEU:HD22	1.95	0.48
1:E:206:LEU:CD2	1:E:271:LEU:HD13	2.42	0.48
1:E:209:GLU:HA	1:E:213:THR:HB	1.95	0.48
1:D:65:LYS:HB3	2:B:117:TRP:CG	2.48	0.48
1:D:106:VAL:O	1:D:110:LEU:HD13	2.13	0.48
1:E:62:LEU:HD11	1:E:70:MET:CE	2.39	0.48

*Continued on next page...*

*Continued from previous page...*

Atom-1	Atom-2	Interatomic distance (Å)	Clash overlap (Å)
1:D:172:ARG:HA	1:D:175:ARG:HE	1.79	0.48
1:E:260:ASP:OD1	1:E:261:PRO:HD2	2.13	0.47
1:D:419:ARG:NH1	1:D:466:CYS:O	2.48	0.47
1:E:348:LEU:HD11	1:E:386:ILE:HG21	1.96	0.47
2:C:184:PHE:O	2:C:187:ILE:HG22	2.14	0.47
1:D:84:ASP:OD2	1:E:77:ARG:CG	2.52	0.47
1:D:104:LYS:HG2	1:D:168:HIS:CE1	2.49	0.47
2:B:121:ASP:O	2:B:125:GLN:HG3	2.14	0.47
1:D:146:ARG:HB2	2:B:106:HIS:CE1	2.50	0.47
3:H:98:MET:HG3	3:H:138:ARG:HG2	1.97	0.47
1:D:101:GLU:HG3	1:D:360:ARG:HB2	1.97	0.47
1:D:149:HIS:CE1	2:B:105:TRP:HB2	2.49	0.47
2:B:105:TRP:H	2:B:105:TRP:CD1	2.33	0.47
2:B:388:LEU:HG	2:B:389:LYS:HG2	1.95	0.47
2:C:106:HIS:O	2:C:110:VAL:HG22	2.15	0.47
2:C:249:HIS:HB3	2:C:295:VAL:HG21	1.95	0.47
1:D:232:THR:HB	1:D:233:PRO:HD3	1.96	0.47
1:E:143:ASP:OD2	1:E:245:ARG:NH2	2.46	0.47
1:E:214:ASN:HB3	1:E:215:PRO:CD	2.45	0.47
1:D:46:TYR:HD2	1:D:126:ASP:OD2	1.97	0.47
1:E:82:LEU:CD2	1:E:231:ILE:HG23	2.44	0.47
1:E:216:LEU:HD13	1:E:286:LEU:CD1	2.45	0.47
1:E:260:ASP:OD2	1:E:262:ALA:HB3	2.15	0.47
2:B:228:ARG:O	2:B:232:GLU:HG3	2.15	0.47
2:B:254:ALA:O	2:B:258:GLN:HB2	2.15	0.47
1:D:310:TYR:CE1	1:D:336:LYS:HD2	2.50	0.46
3:H:18:LYS:HE3	3:H:31:MET:HE1	1.97	0.46
1:D:125:TRP:HE1	1:D:134:LYS:HB3	1.79	0.46
1:D:193:ILE:HD11	2:B:82:SER:HB3	1.98	0.46
2:B:348:ASP:OD1	2:B:348:ASP:N	2.49	0.46
1:E:189:SER:O	1:E:193:ILE:HG12	2.15	0.46
1:E:353:LEU:CD2	1:E:405:LEU:HD13	2.46	0.46
1:E:125:TRP:HZ2	2:C:160:PHE:CZ	2.32	0.46
2:C:145:ILE:HG21	2:C:200:LEU:CD1	2.45	0.46
2:B:6:GLU:OE1	2:B:6:GLU:N	2.49	0.46
2:B:376:ASP:HB3	2:B:379:GLN:HB3	1.98	0.46
1:D:354:TRP:CG	1:D:355:PRO:HD3	2.51	0.46
1:D:160:LYS:HG3	1:D:161:ASN:ND2	2.30	0.46
1:D:488:LEU:CD2	1:D:495:LEU:HD23	2.46	0.46
2:B:306:ASP:O	2:B:310:SER:HB2	2.16	0.46
1:D:144:GLU:HA	1:D:144:GLU:OE1	2.15	0.46

*Continued on next page...*

*Continued from previous page...*

Atom-1	Atom-2	Interatomic distance (Å)	Clash overlap (Å)
1:D:202:LEU:HD22	1:D:206:LEU:HD23	1.98	0.46
1:D:281:TYR:CZ	1:D:285:VAL:HG21	2.51	0.46
1:D:309:VAL:HG12	1:D:332:LEU:HD11	1.98	0.46
1:E:109:PHE:CG	1:E:184:MET:HG2	2.50	0.46
1:E:125:TRP:CZ3	2:C:164:SER:CA	2.99	0.46
2:B:53:THR:O	2:B:173:ASP:OD2	2.34	0.46
1:D:125:TRP:CZ3	2:B:164:SER:CA	2.99	0.45
1:E:466:CYS:HB2	2:C:73:THR:HA	1.97	0.45
3:G:131:GLY:O	3:G:135:LEU:HG	2.16	0.45
1:D:510:ASP:O	1:D:514:ARG:HG3	2.15	0.45
2:C:150:GLY:O	2:C:153:LEU:HG	2.16	0.45
1:E:300:PRO:HD2	1:E:303:LYS:CE	2.47	0.45
1:D:254:VAL:HG11	1:D:321:LEU:HD22	1.98	0.45
1:E:248:ALA:O	1:E:252:GLN:HG2	2.17	0.45
1:E:450:ASP:N	1:E:450:ASP:OD1	2.48	0.45
1:E:512:ILE:HA	1:E:515:LEU:HD12	1.97	0.45
2:C:239:PHE:O	3:H:129:LEU:HD12	2.16	0.45
2:B:259:PHE:CE1	2:B:336:MET:HE1	2.51	0.45
1:E:283:THR:HB	1:E:284:PRO:HD3	1.98	0.45
3:H:115:ARG:O	3:H:119:LYS:HB2	2.16	0.45
1:D:125:TRP:CZ3	2:B:164:SER:HB3	2.52	0.45
1:E:354:TRP:CG	1:E:355:PRO:HD3	2.52	0.45
2:B:263:GLU:HB3	2:B:355:SER:HB2	1.98	0.45
2:C:90:LEU:HD13	2:C:303:LEU:HD13	1.98	0.45
3:H:18:LYS:HE3	3:H:31:MET:HE3	1.96	0.45
3:H:38:ASP:OD1	3:H:45:ASN:ND2	2.49	0.45
1:E:495:LEU:HD11	1:E:512:ILE:CG1	2.46	0.45
2:C:114:ALA:O	2:C:118:ARG:HG3	2.17	0.45
3:G:154:GLU:OE2	3:G:154:GLU:HA	2.16	0.45
1:D:483:ALA:HB2	1:D:509:LEU:HD21	1.99	0.45
2:C:91:ARG:HD2	3:H:62:GLU:HG2	1.99	0.44
1:D:217:ILE:HG23	1:D:236:PHE:HB3	1.99	0.44
1:D:439:HIS:O	1:D:445:MET:HA	2.17	0.44
2:B:160:PHE:HD1	2:B:183:GLY:O	2.00	0.44
3:G:108:GLU:HG3	3:G:109:LYS:N	2.32	0.44
1:E:47:ALA:HB1	3:H:140:MET:HE2	1.99	0.44
2:C:54:VAL:HA	2:C:173:ASP:OD1	2.16	0.44
1:D:65:LYS:HD2	2:B:117:TRP:HB2	2.00	0.44
1:E:69:ARG:HA	2:C:114:ALA:HB2	1.99	0.44
3:H:91:LEU:HD11	3:H:131:GLY:HA2	1.99	0.44
1:E:184:MET:CE	1:E:188:PHE:CD2	3.00	0.44

*Continued on next page...*

*Continued from previous page...*

Atom-1	Atom-2	Interatomic distance (Å)	Clash overlap (Å)
2:B:166:GLY:HA2	2:B:241:TRP:CB	2.47	0.44
1:E:285:VAL:HG22	1:E:346:LEU:HD21	2.00	0.44
1:E:232:THR:HB	1:E:233:PRO:HD3	2.00	0.44
1:E:439:HIS:HE1	1:E:454:GLU:OE1	2.01	0.44
2:B:371:ILE:O	2:B:372:ASP:HB2	2.18	0.44
1:D:495:LEU:HD11	1:D:512:ILE:CG1	2.48	0.44
1:D:252:GLN:OE1	1:D:252:GLN:HA	2.18	0.43
2:B:240:ASP:HB3	2:B:243:GLU:HB3	1.99	0.43
1:D:352:ALA:HB2	1:D:408:PHE:CE1	2.53	0.43
2:B:106:HIS:CE1	2:B:110:VAL:HG11	2.53	0.43
2:B:60:ALA:HB3	2:B:62:TRP:NE1	2.34	0.43
2:B:172:SER:OG	2:B:174:VAL:HG22	2.18	0.43
1:E:101:GLU:HG3	1:E:360:ARG:HB2	2.01	0.43
1:E:321:LEU:HD23	1:E:321:LEU:HA	1.77	0.43
2:B:43:TRP:CH2	2:B:103:ARG:HD3	2.54	0.43
2:B:223:VAL:HG13	2:B:335:PHE:HA	2.00	0.43
3:H:68:LYS:HE3	3:H:77:PHE:CE1	2.54	0.43
1:D:60:PHE:CE2	1:D:245:ARG:HA	2.53	0.43
1:D:62:LEU:HD11	1:D:70:MET:HE1	1.98	0.43
1:D:77:ARG:HB3	1:E:84:ASP:CG	2.27	0.43
1:E:32:LEU:HD21	1:E:135:ASN:HB2	2.00	0.43
1:E:67:TYR:HA	1:E:70:MET:HE2	1.99	0.43
1:E:462:GLU:HA	3:H:42:PRO:CG	2.49	0.43
1:E:488:LEU:HD21	1:E:509:LEU:HD13	2.01	0.43
2:C:298:LEU:HD12	2:C:298:LEU:O	2.18	0.43
3:G:94:THR:HG21	3:G:114:PHE:CD1	2.54	0.43
1:E:202:LEU:HA	1:E:206:LEU:HB3	2.00	0.43
2:B:366:ASP:O	2:B:370:ARG:HG3	2.18	0.43
2:B:374:LYS:HB2	2:B:374:LYS:HE2	1.93	0.43
1:D:65:LYS:HD3	2:B:113:LYS:HG2	2.01	0.43
1:E:354:TRP:N	1:E:355:PRO:CD	2.82	0.43
2:B:319:ASN:ND2	3:G:74:GLU:HA	2.34	0.43
1:D:17:ASN:N	2:B:129:ALA:O	2.51	0.43
1:D:104:LYS:NZ	1:D:166:ALA:O	2.48	0.43
1:D:219:ALA:O	1:D:223:TRP:HD1	2.01	0.43
2:C:168:ARG:HD2	2:C:168:ARG:O	2.19	0.43
1:D:77:ARG:HD2	1:E:84:ASP:OD1	2.18	0.43
1:D:81:SER:OG	1:E:85:ALA:CB	2.65	0.43
1:E:188:PHE:CZ	1:E:282:PHE:CZ	3.07	0.43
3:G:91:LEU:O	3:G:95:VAL:HG23	2.19	0.43
1:E:230:GLU:CG	2:C:11:LEU:HD22	2.49	0.42

*Continued on next page...*

*Continued from previous page...*

Atom-1	Atom-2	Interatomic distance (Å)	Clash overlap (Å)
3:G:123:MET:HG3	3:G:124:PRO:HD2	2.00	0.42
3:H:55:TRP:CE2	3:H:59:LYS:HE2	2.55	0.42
3:H:153:GLU:OE1	3:H:153:GLU:N	2.49	0.42
1:D:82:LEU:CD2	1:D:231:ILE:HG23	2.48	0.42
1:E:275:PHE:CZ	1:E:332:LEU:HD12	2.54	0.42
1:D:112:VAL:HG21	1:D:181:TRP:HH2	1.85	0.42
1:E:114:GLU:O	1:E:118:ILE:HG13	2.20	0.42
2:C:161:ASN:HB3	2:C:235:TRP:CE2	2.54	0.42
1:D:48:THR:HA	1:D:196:ASP:OD2	2.20	0.42
1:E:67:TYR:OH	1:E:142:LEU:HB3	2.20	0.42
1:D:283:THR:HB	1:D:284:PRO:HD3	2.00	0.42
1:E:413:HIS:HB3	1:E:426:CYS:SG	2.59	0.42
1:E:436:LEU:C	1:E:437:ARG:HD2	2.45	0.42
1:D:286:LEU:HD23	1:D:286:LEU:HA	1.85	0.42
1:E:49:LYS:HB2	1:E:49:LYS:HE2	1.86	0.42
1:E:167:GLY:O	1:E:171:ALA:HB2	2.20	0.42
3:H:67:LEU:HD23	3:H:70:ARG:NH2	2.35	0.42
1:D:65:LYS:HE3	2:B:188:ASP:CG	2.45	0.42
1:D:111:GLU:OE2	1:D:172:ARG:NH2	2.47	0.42
1:D:115:TYR:OH	2:B:173:ASP:HA	2.20	0.42
1:D:257:ILE:O	1:D:263:SER:HB2	2.20	0.42
2:C:356:LEU:HD21	2:C:384:VAL:HG11	2.02	0.42
1:D:81:SER:HG	1:E:85:ALA:HB2	1.83	0.42
2:C:98:HIS:HE1	2:C:178:SER:OG	2.03	0.42
2:C:235:TRP:CD1	2:C:235:TRP:C	2.98	0.42
2:B:114:ALA:O	2:B:118:ARG:HG3	2.19	0.42
1:D:116:ASN:HB2	1:D:188:PHE:O	2.19	0.41
1:E:300:PRO:HD2	1:E:303:LYS:HE3	2.02	0.41
1:E:425:PHE:CE2	1:E:427:PRO:HG3	2.56	0.41
2:C:54:VAL:O	2:C:55:TYR:HB2	2.20	0.41
2:C:136:MET:HE2	2:C:274:ASP:OD1	2.20	0.41
1:D:62:LEU:O	1:D:135:ASN:ND2	2.51	0.41
1:D:65:LYS:HB3	2:B:117:TRP:CD2	2.54	0.41
1:E:123:MET:HB2	2:C:168:ARG:HD3	2.01	0.41
1:E:365:ASP:OD1	1:E:368:GLU:HG3	2.20	0.41
1:E:437:ARG:O	1:E:447:THR:HA	2.20	0.41
2:B:88:THR:OG1	2:B:242:ASN:HB2	2.20	0.41
3:H:37:MET:HE1	3:H:116:GLN:HB3	2.01	0.41
1:E:310:TYR:CE1	1:E:332:LEU:CG	3.03	0.41
1:D:165:PRO:HD2	2:B:30:ASP:CB	2.50	0.41
1:D:186:ARG:HD2	1:D:420:VAL:O	2.20	0.41

*Continued on next page...*

*Continued from previous page...*

Atom-1	Atom-2	Interatomic distance (Å)	Clash overlap (Å)
1:D:214:ASN:HD22	1:D:243:GLU:HG3	1.86	0.41
1:E:188:PHE:CD1	1:E:192:PHE:CZ	3.09	0.41
3:H:103:ASP:OD1	3:H:106:GLU:HG3	2.21	0.41
1:D:101:GLU:OE1	1:D:360:ARG:NH2	2.52	0.41
1:D:394:GLY:O	1:D:400:SER:OG	2.34	0.41
2:C:137:ASN:OD1	2:C:138:PRO:HD2	2.20	0.41
2:C:213:VAL:HB	2:C:214:PRO:CD	2.51	0.41
1:D:163:GLN:O	2:B:28:PRO:HA	2.21	0.41
1:D:237:LEU:O	1:D:241:THR:HG23	2.20	0.41
1:D:271:LEU:CD2	1:D:326:VAL:HG13	2.51	0.41
1:D:288:MET:HG3	1:D:347:TYR:HD1	1.85	0.41
1:D:495:LEU:HD11	1:D:512:ILE:HG12	2.02	0.41
1:E:233:PRO:O	1:E:237:LEU:HG	2.20	0.41
1:D:184:MET:HE3	1:D:188:PHE:HB2	2.02	0.41
2:C:78:GLY:HA3	3:H:111:HIS:CE1	2.56	0.41
2:C:88:THR:OG1	2:C:242:ASN:HB2	2.21	0.41
1:D:74:LYS:NZ	1:D:242:ASP:OD1	2.53	0.41
1:D:302:VAL:HG13	1:D:303:LYS:N	2.36	0.41
2:C:78:GLY:HA3	3:H:111:HIS:ND1	2.36	0.41
3:G:40:THR:O	3:G:41:THR:CG2	2.56	0.41
3:H:108:GLU:HG3	3:H:109:LYS:N	2.36	0.41
1:E:207:VAL:O	1:E:211:CYS:HB3	2.21	0.40
2:B:262:ARG:HD2	2:C:130:ASP:OD2	2.21	0.40
1:E:111:GLU:HB2	1:E:151:CYS:HB2	2.03	0.40
2:C:80:ARG:O	2:C:80:ARG:HG3	2.20	0.40
2:C:186:LYS:HD3	2:C:186:LYS:HA	1.77	0.40
2:C:254:ALA:O	2:C:258:GLN:HB2	2.21	0.40
3:H:4:LEU:HB3	3:H:9:ASN:HA	2.03	0.40
1:D:390:TRP:CE2	1:D:404:PRO:HB3	2.56	0.40
1:E:155:ASN:OD1	1:E:168:HIS:HD2	2.05	0.40
2:C:306:ASP:O	2:C:310:SER:HB2	2.22	0.40
1:D:138:LEU:HD22	2:B:160:PHE:CE1	2.57	0.40
1:D:202:LEU:HD22	1:D:206:LEU:CD2	2.50	0.40
1:E:196:ASP:OD1	1:E:197:ALA:N	2.54	0.40
1:E:214:ASN:OD1	1:E:240:GLU:OE2	2.38	0.40
3:H:37:MET:HE1	3:H:116:GLN:CB	2.52	0.40
1:D:354:TRP:N	1:D:355:PRO:CD	2.85	0.40
1:E:41:ASN:O	2:C:236:GLN:HB3	2.22	0.40
1:E:352:ALA:HB2	1:E:408:PHE:CE1	2.56	0.40
2:C:137:ASN:HD22	2:C:272:PHE:HD1	1.68	0.40

There are no symmetry-related clashes.

## 5.3 Torsion angles

### 5.3.1 Protein backbone

In the following table, the Percentiles column shows the percent Ramachandran outliers of the chain as a percentile score with respect to all PDB entries followed by that with respect to all EM entries.

The Analysed column shows the number of residues for which the backbone conformation was analysed, and the total number of residues.

Mol	Chain	Analysed	Favoured	Allowed	Outliers	Percentiles	
1	D	508/527 (96%)	495 (97%)	13 (3%)	0	100	100
1	E	509/527 (97%)	490 (96%)	19 (4%)	0	100	100
2	B	382/389 (98%)	374 (98%)	8 (2%)	0	100	100
2	C	382/389 (98%)	377 (99%)	5 (1%)	0	100	100
3	G	160/170 (94%)	159 (99%)	1 (1%)	0	100	100
3	H	160/170 (94%)	157 (98%)	3 (2%)	0	100	100
All	All	2101/2172 (97%)	2052 (98%)	49 (2%)	0	100	100

There are no Ramachandran outliers to report.

### 5.3.2 Protein sidechains

In the following table, the Percentiles column shows the percent sidechain outliers of the chain as a percentile score with respect to all PDB entries followed by that with respect to all EM entries.

The Analysed column shows the number of residues for which the sidechain conformation was analysed, and the total number of residues.

Mol	Chain	Analysed	Rotameric	Outliers	Percentiles	
1	D	432/442 (98%)	431 (100%)	1 (0%)	87	96
1	E	432/442 (98%)	430 (100%)	2 (0%)	81	93
2	B	319/323 (99%)	319 (100%)	0	100	100
2	C	319/323 (99%)	319 (100%)	0	100	100
3	G	140/147 (95%)	140 (100%)	0	100	100
3	H	140/147 (95%)	140 (100%)	0	100	100
All	All	1782/1824 (98%)	1779 (100%)	3 (0%)	85	96

All (3) residues with a non-rotameric sidechain are listed below:

Mol	Chain	Res	Type
1	D	444	GLN
1	E	307	ARG
1	E	444	GLN

Sometimes sidechains can be flipped to improve hydrogen bonding and reduce clashes. All (38) such sidechains are listed below:

Mol	Chain	Res	Type
1	D	17	ASN
1	D	59	GLN
1	D	96	HIS
1	D	100	ASN
1	D	116	ASN
1	D	129	GLN
1	D	155	ASN
1	D	214	ASN
1	D	343	HIS
1	D	344	HIS
1	D	366	GLN
1	D	382	HIS
1	D	412	ASN
1	D	439	HIS
1	E	33	GLN
1	E	83	GLN
1	E	161	ASN
1	E	168	HIS
1	E	306	ASN
1	E	343	HIS
1	E	366	GLN
1	E	411	ASN
1	E	413	HIS
1	E	439	HIS
2	B	106	HIS
2	B	242	ASN
2	B	275	ASN
2	B	283	GLN
2	C	77	HIS
2	C	98	HIS
2	C	106	HIS
2	C	266	GLN
3	G	45	ASN
3	H	7	HIS

*Continued on next page...*



*Continued from previous page...*

Mol	Chain	Res	Type
3	H	34	GLN
3	H	79	HIS
3	H	111	HIS
3	H	144	ASN

### 5.3.3 RNA [i](#)

There are no RNA molecules in this entry.

### 5.4 Non-standard residues in protein, DNA, RNA chains [i](#)

There are no non-standard protein/DNA/RNA residues in this entry.

### 5.5 Carbohydrates [i](#)

There are no oligosaccharides in this entry.

### 5.6 Ligand geometry [i](#)

Of 4 ligands modelled in this entry, 4 are monoatomic - leaving 0 for Mogul analysis.

There are no bond length outliers.

There are no bond angle outliers.

There are no chirality outliers.

There are no torsion outliers.

There are no ring outliers.

No monomer is involved in short contacts.

### 5.7 Other polymers [i](#)

There are no such residues in this entry.

### 5.8 Polymer linkage issues [i](#)

There are no chain breaks in this entry.

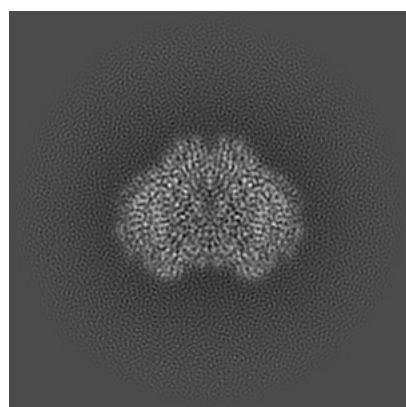
## 6 Map visualisation [i](#)

This section contains visualisations of the EMDB entry EMD-25804. These allow visual inspection of the internal detail of the map and identification of artifacts.

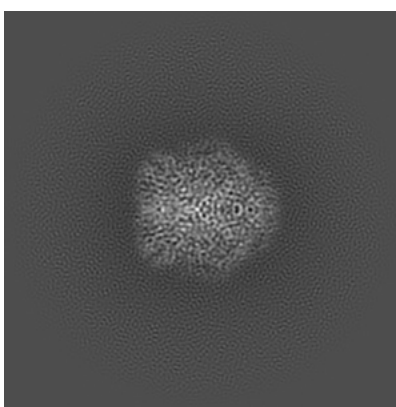
No raw map or half-maps were deposited for this entry and therefore no images, graphs, etc. pertaining to the raw map can be shown.

### 6.1 Orthogonal projections [i](#)

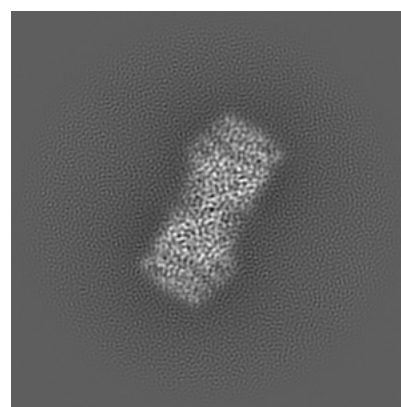
#### 6.1.1 Primary map



X



Y

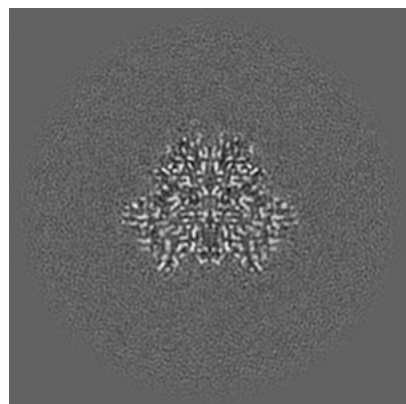


Z

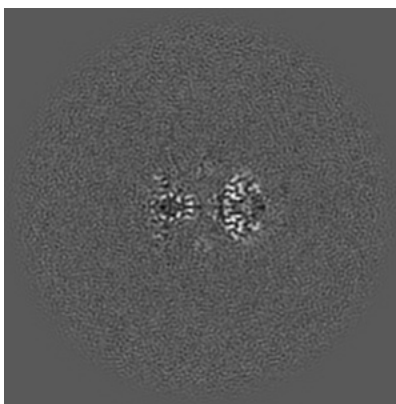
The images above show the map projected in three orthogonal directions.

### 6.2 Central slices [i](#)

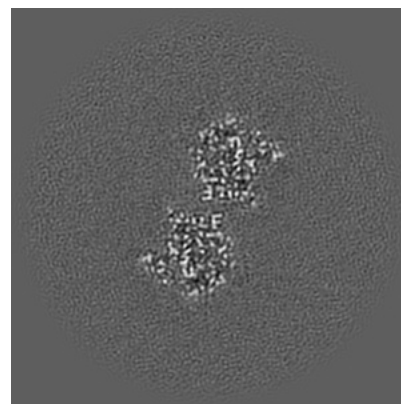
#### 6.2.1 Primary map



X Index: 128



Y Index: 128

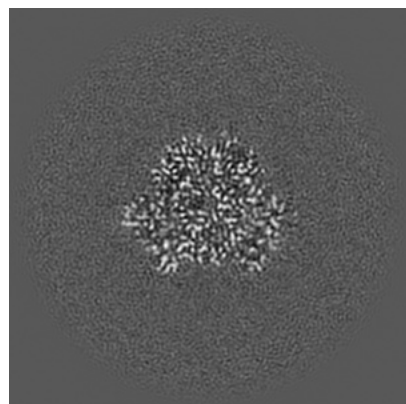


Z Index: 128

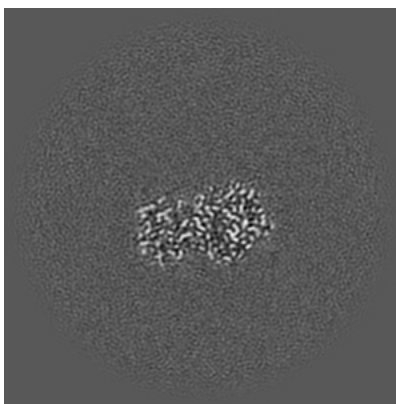
The images above show central slices of the map in three orthogonal directions.

## 6.3 Largest variance slices [i](#)

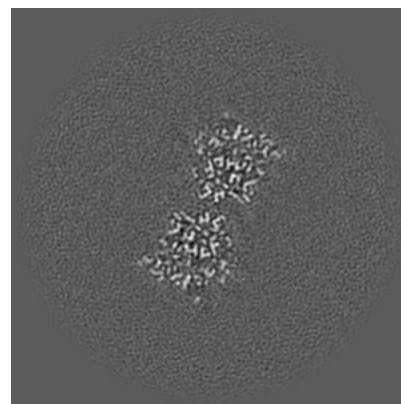
### 6.3.1 Primary map



X Index: 127



Y Index: 106

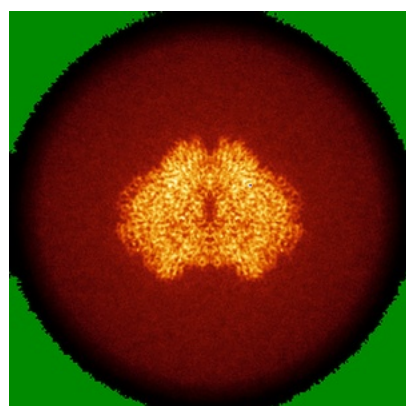


Z Index: 133

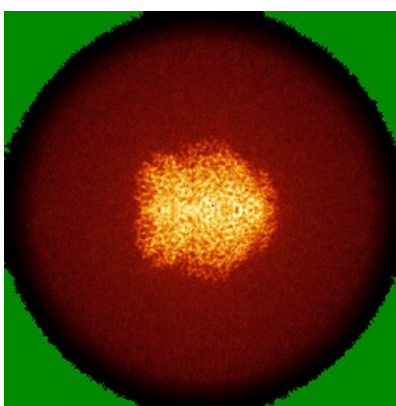
The images above show the largest variance slices of the map in three orthogonal directions.

## 6.4 Orthogonal standard-deviation projections (False-color) [i](#)

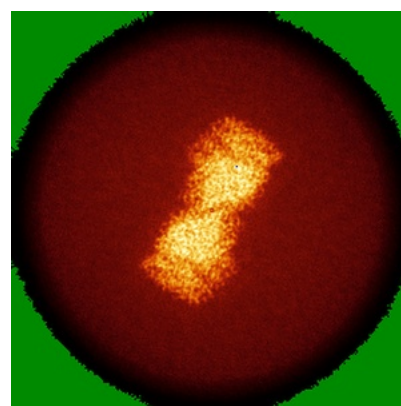
### 6.4.1 Primary map



X



Y

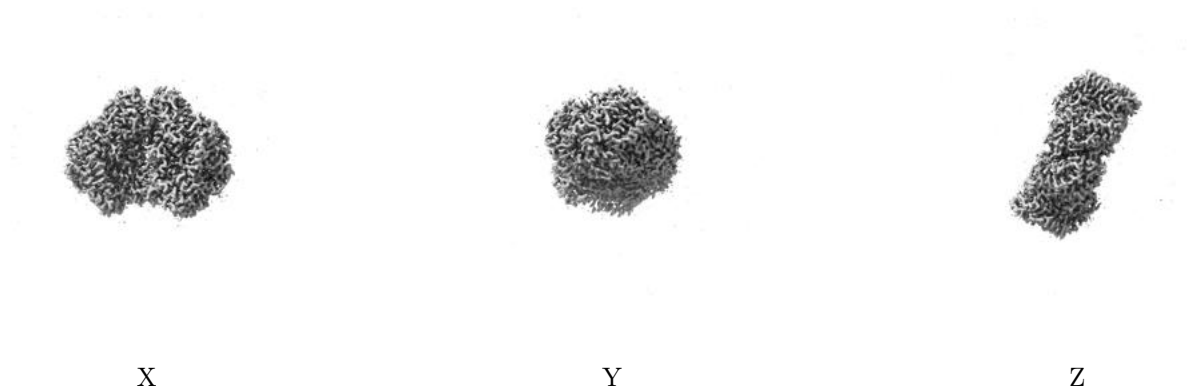


Z

The images above show the map standard deviation projections with false color in three orthogonal directions. Minimum values are shown in green, max in blue, and dark to light orange shades represent small to large values respectively.

## 6.5 Orthogonal surface views [i](#)

### 6.5.1 Primary map



The images above show the 3D surface view of the map at the recommended contour level 0.8. These images, in conjunction with the slice images, may facilitate assessment of whether an appropriate contour level has been provided.

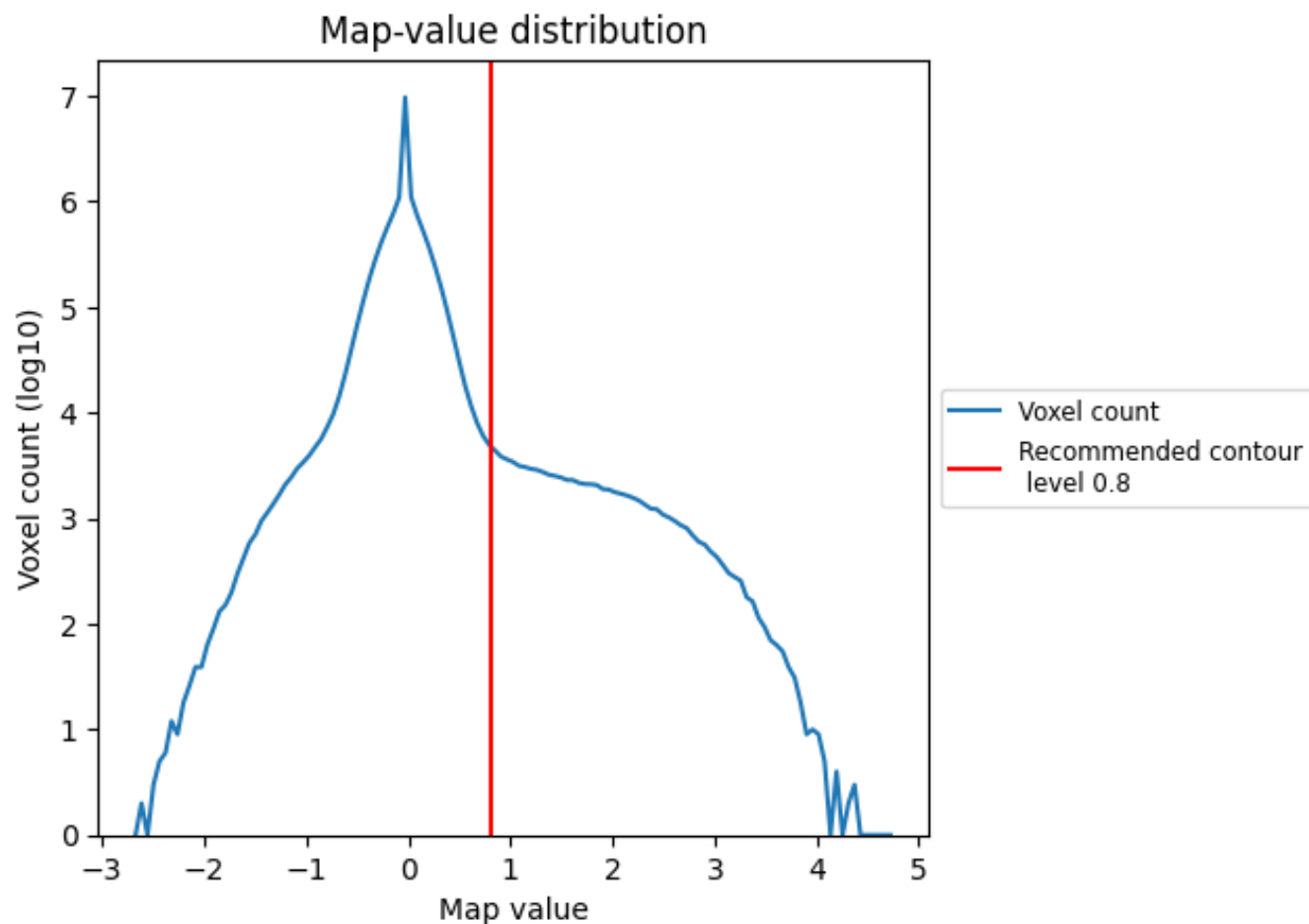
## 6.6 Mask visualisation [i](#)

This section was not generated. No masks/segmentation were deposited.

## 7 Map analysis [i](#)

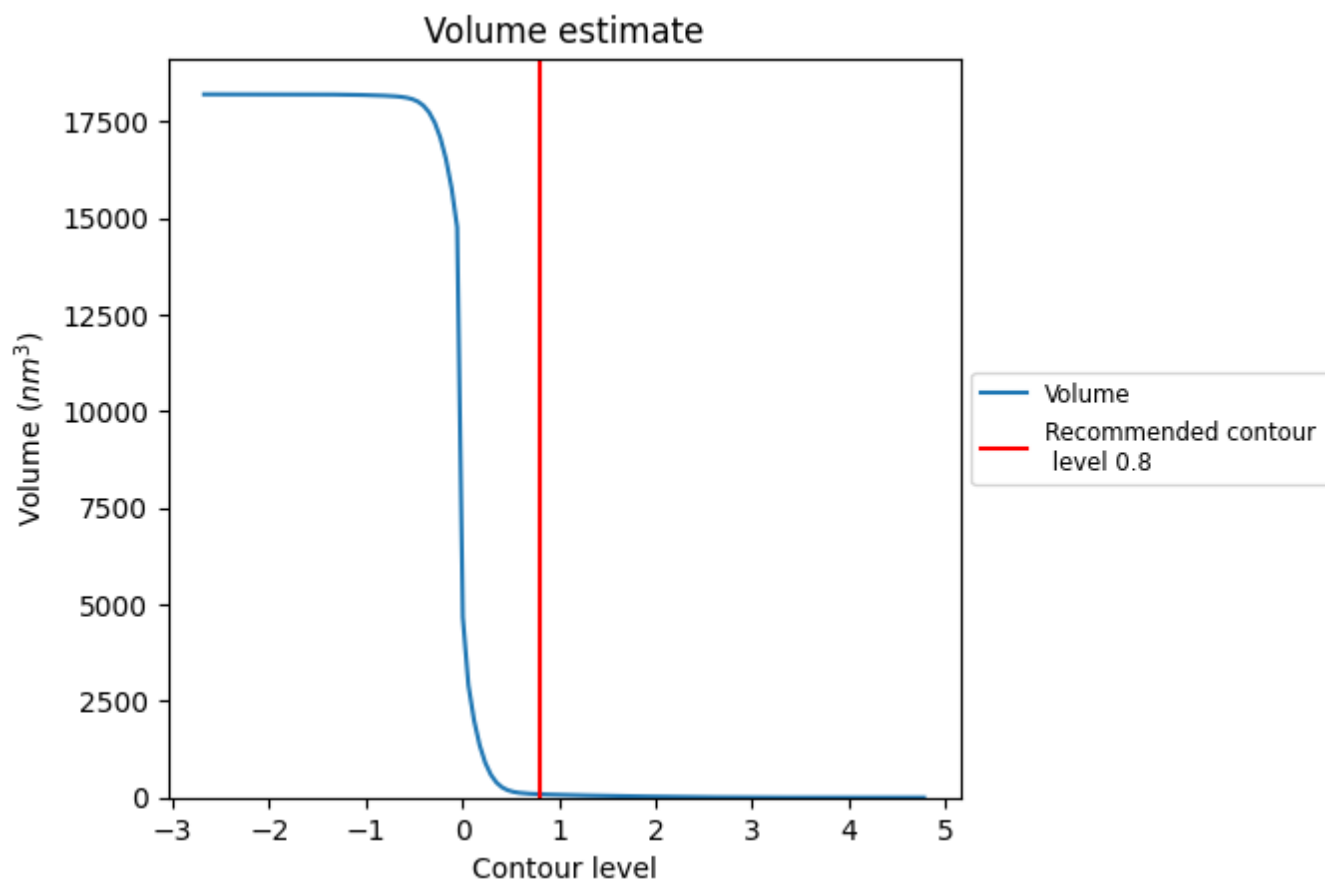
This section contains the results of statistical analysis of the map.

### 7.1 Map-value distribution [i](#)



The map-value distribution is plotted in 128 intervals along the x-axis. The y-axis is logarithmic. A spike in this graph at zero usually indicates that the volume has been masked.

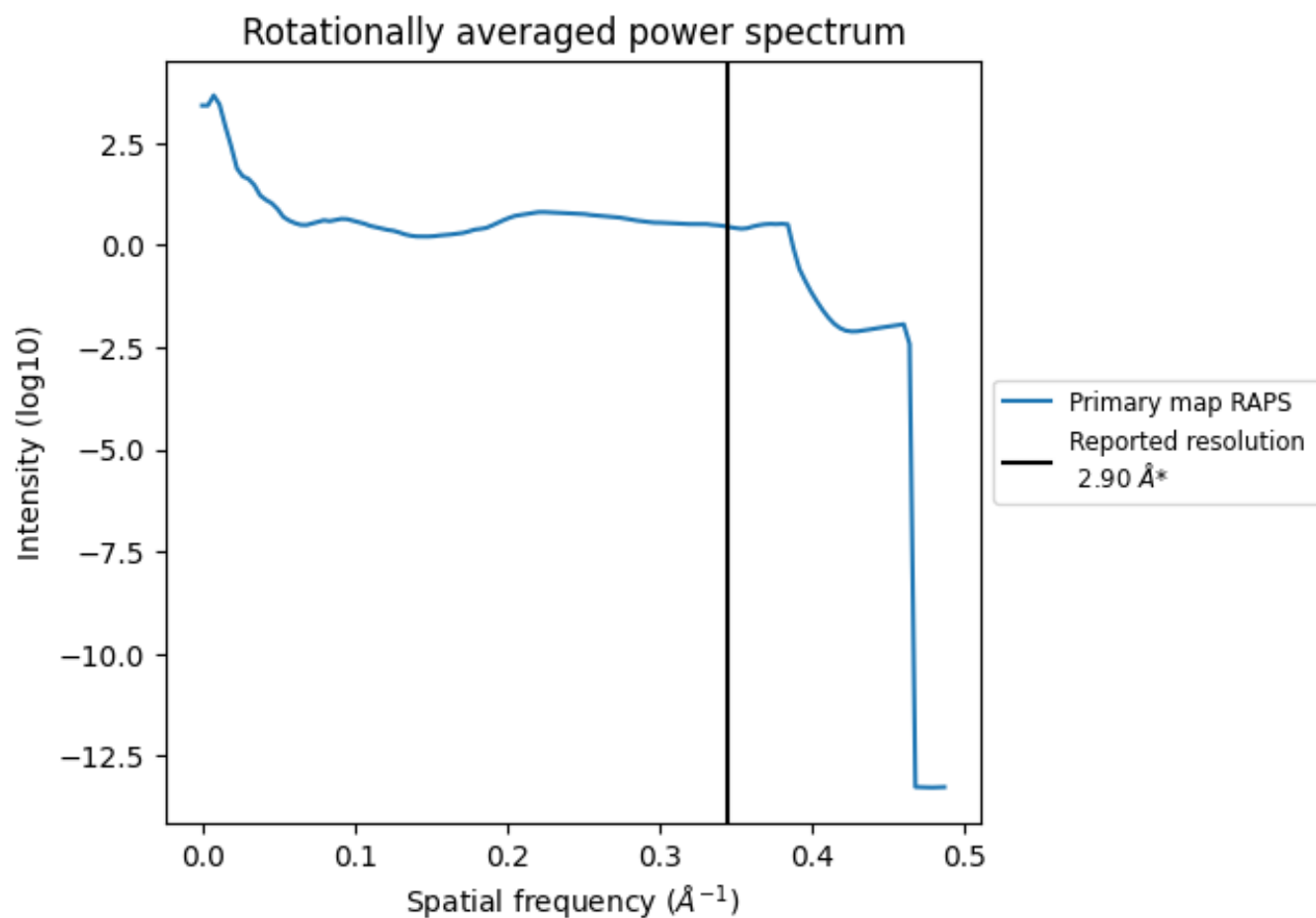
## 7.2 Volume estimate [i](#)



The volume at the recommended contour level is 87 nm<sup>3</sup>; this corresponds to an approximate mass of 79 kDa.

The volume estimate graph shows how the enclosed volume varies with the contour level. The recommended contour level is shown as a vertical line and the intersection between the line and the curve gives the volume of the enclosed surface at the given level.

### 7.3 Rotationally averaged power spectrum ⓘ



\*Reported resolution corresponds to spatial frequency of 0.345 Å<sup>-1</sup>

## 8 Fourier-Shell correlation ⓘ

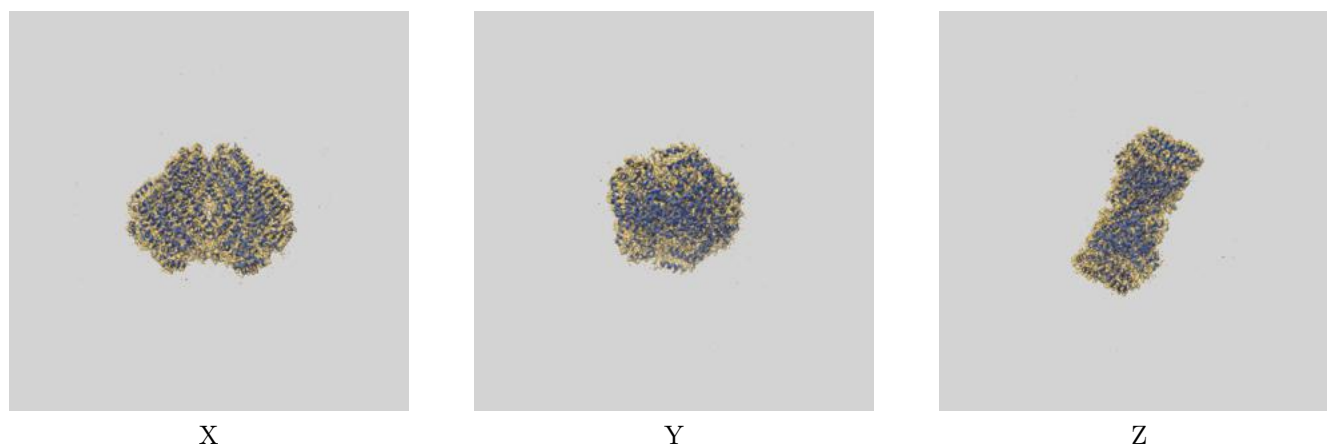
This section was not generated. No FSC curve or half-maps provided.



## 9 Map-model fit [i](#)

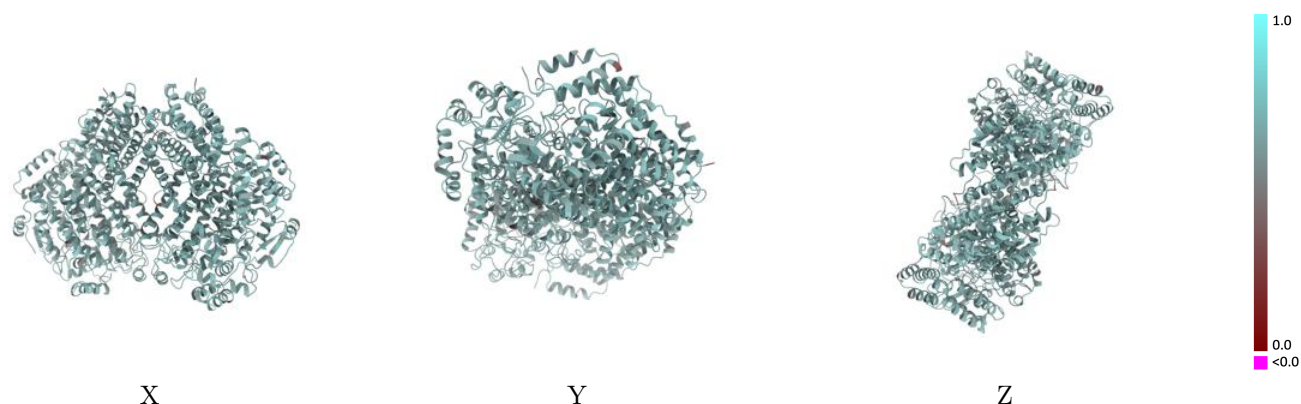
This section contains information regarding the fit between EMDB map EMD-25804 and PDB model 7TC7. Per-residue inclusion information can be found in section [3](#) on page [5](#).

### 9.1 Map-model overlay [i](#)



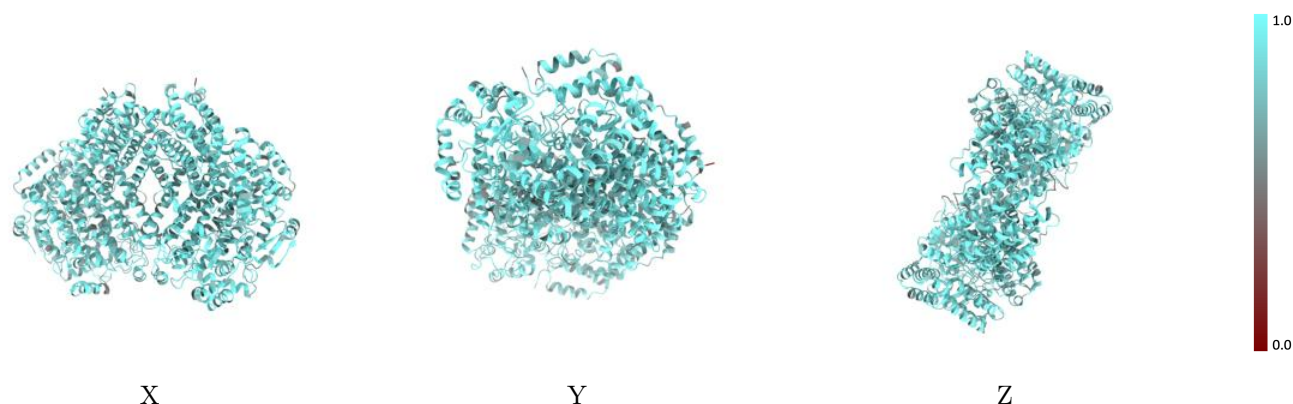
The images above show the 3D surface view of the map at the recommended contour level 0.8 at 50% transparency in yellow overlaid with a ribbon representation of the model coloured in blue. These images allow for the visual assessment of the quality of fit between the atomic model and the map.

## 9.2 Q-score mapped to coordinate model [i](#)



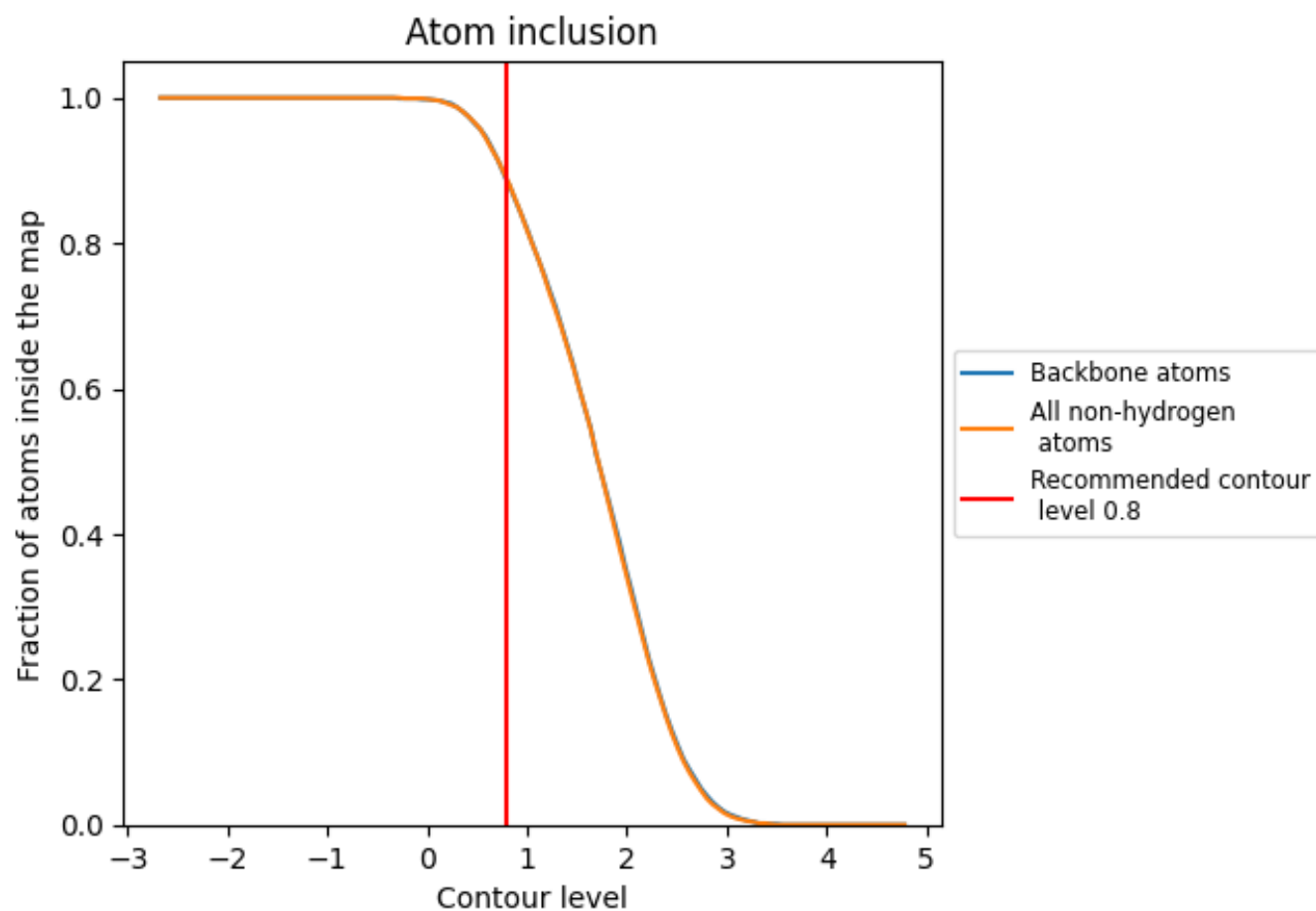
The images above show the model with each residue coloured according its Q-score. This shows their resolvability in the map with higher Q-score values reflecting better resolvability. Please note: Q-score is calculating the resolvability of atoms, and thus high values are only expected at resolutions at which atoms can be resolved. Low Q-score values may therefore be expected for many entries.

## 9.3 Atom inclusion mapped to coordinate model [i](#)



The images above show the model with each residue coloured according to its atom inclusion. This shows to what extent they are inside the map at the recommended contour level (0.8).

## 9.4 Atom inclusion [i](#)



At the recommended contour level, 88% of all backbone atoms, 89% of all non-hydrogen atoms, are inside the map.

9.5 Map-model fit summary ⓘ

The table lists the average atom inclusion at the recommended contour level (0.8) and Q-score for the entire model and for each chain.

Chain	Atom inclusion	Q-score
All	<div><div></div></div> 0.8870	<div><div></div></div> 0.6300
B	<div><div></div></div> 0.9050	<div><div></div></div> 0.6380
C	<div><div></div></div> 0.9070	<div><div></div></div> 0.6380
D	<div><div></div></div> 0.8700	<div><div></div></div> 0.6240
E	<div><div></div></div> 0.8850	<div><div></div></div> 0.6290
G	<div><div></div></div> 0.8660	<div><div></div></div> 0.6220
H	<div><div></div></div> 0.8620	<div><div></div></div> 0.6180

1.0

0.0

<0.0