



Full wwPDB EM Validation Report ⓘ

Mar 9, 2026 – 01:10 PM UTC

PDB ID : 6RTB / pdb_00006rtb
EMDB ID : EMD-4996
Title : cryo-em structure of alpha-synuclein fibril polymorph 2B
Authors : Guerrero-Ferreira, R.; Taylor, N.M.I.; Arteni, A.A.; Melki, R.; Meier, B.H.;
Bockmann, A.; Bousset, L.; Stahlberg, H.
Deposited on : 2019-05-22
Resolution : 3.46 Å(reported)

This is a Full wwPDB EM Validation Report for a publicly released PDB entry.

We welcome your comments at validation@mail.wwpdb.org

A user guide is available at

<https://www.wwpdb.org/validation/2017/EMValidationReportHelp>
with specific help available everywhere you see the ⓘ symbol.

The types of validation reports are described at

<http://www.wwpdb.org/validation/2017/FAQs#types>.

The following versions of software and data (see [references ⓘ](#)) were used in the production of this report:

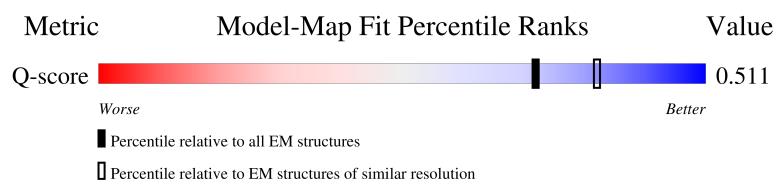
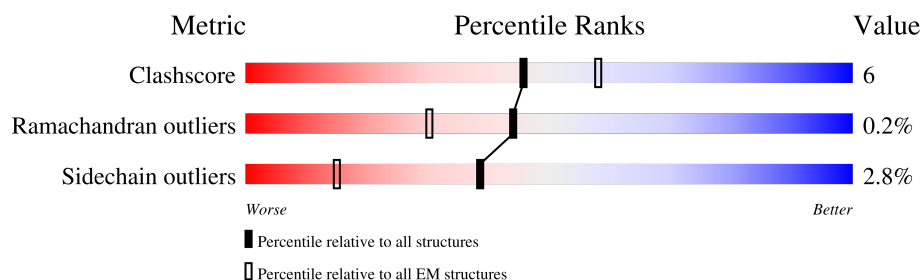
EMDB validation analysis : 0.0.1.dev132
MolProbity : 4-5-2 with Phenix2.0
Percentile statistics : 20250101.v01 (using entries in the PDB archive January 1st 2025)
EM percentile statistics : 202505.v01 (Using data in the EMDB archive up until May 2025)
MapQ : 1.9.13
Ideal geometry (proteins) : Engh & Huber (2001)
Ideal geometry (DNA, RNA) : Parkinson et al. (1996)
Validation Pipeline (wwPDB-VP) : 2.49

1 Overall quality at a glance

The following experimental techniques were used to determine the structure:
ELECTRON MICROSCOPY

The reported resolution of this entry is 3.46 Å.

Percentile scores (ranging between 0-100) for global validation metrics of the entry are shown in the following graphic. The table shows the number of entries on which the scores are based.




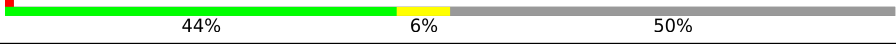
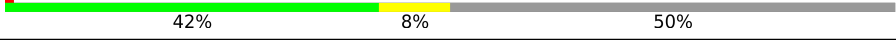
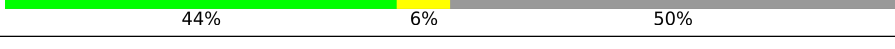
Metric	Whole archive (#Entries)	EM structures (#Entries)	Similar EM resolution (#Entries, resolution range(Å))
Clashscore	229148	23984	-
Ramachandran outliers	224038	23583	-
Sidechain outliers	223484	23102	-
Q-score	-	25397	13788 (2.96 - 3.96)

The table below summarises the geometric issues observed across the polymeric chains and their fit to the map. The red, orange, yellow and green segments of the bar indicate the fraction of residues that contain outliers for ≥ 3 , 2, 1 and 0 types of geometric quality criteria respectively. A grey segment represents the fraction of residues that are not modelled. The numeric value for each fraction is indicated below the corresponding segment, with a dot representing fractions $\leq 5\%$. The upper red bar (where present) indicates the fraction of residues that have poor fit to the EM map (all-atom inclusion $< 40\%$). The numeric value is given above the bar.

Mol	Chain	Length	Quality of chain
1	A	140	
1	B	140	
1	C	140	
1	D	140	

Continued on next page...

Continued from previous page...

Mol	Chain	Length	Quality of chain
1	E	140	
1	F	140	
1	G	140	
1	H	140	
1	I	140	
1	J	140	



2 Entry composition

There is only 1 type of molecule in this entry. The entry contains 4681 atoms, of which 0 are hydrogens and 0 are deuteriums.

In the tables below, the AltConf column contains the number of residues with at least one atom in alternate conformation and the Trace column contains the number of residues modelled with at most 2 atoms.

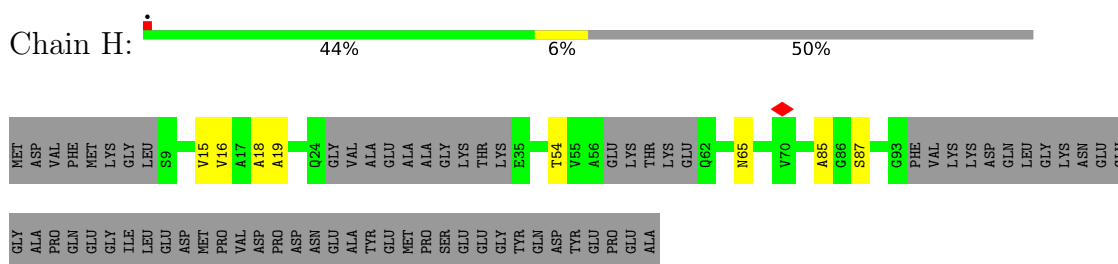
- Molecule 1 is a protein called Alpha-synuclein.

Mol	Chain	Residues	Atoms				AltConf	Trace
1	H	70	Total 469	C 290	N 83	O 96	0	0
1	C	70	Total 469	C 290	N 83	O 96	0	0
1	I	70	Total 469	C 290	N 83	O 96	0	0
1	D	69	Total 460	C 285	N 82	O 93	0	0
1	J	70	Total 469	C 290	N 83	O 96	0	0
1	E	70	Total 469	C 290	N 83	O 96	0	0
1	G	70	Total 469	C 290	N 83	O 96	0	0
1	B	70	Total 469	C 290	N 83	O 96	0	0
1	F	70	Total 469	C 290	N 83	O 96	0	0
1	A	70	Total 469	C 290	N 83	O 96	0	0

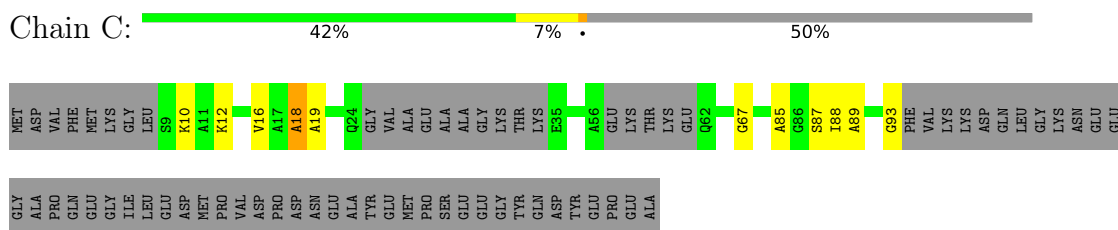
3 Residue-property plots [i](#)

These plots are drawn for all protein, RNA, DNA and oligosaccharide chains in the entry. The first graphic for a chain summarises the proportions of the various outlier classes displayed in the second graphic. The second graphic shows the sequence view annotated by issues in geometry and atom inclusion in map density. Residues are color-coded according to the number of geometric quality criteria for which they contain at least one outlier: green = 0, yellow = 1, orange = 2 and red = 3 or more. A red diamond above a residue indicates a poor fit to the EM map for this residue (all-atom inclusion < 40%). Stretches of 2 or more consecutive residues without any outlier are shown as a green connector. Residues present in the sample, but not in the model, are shown in grey.

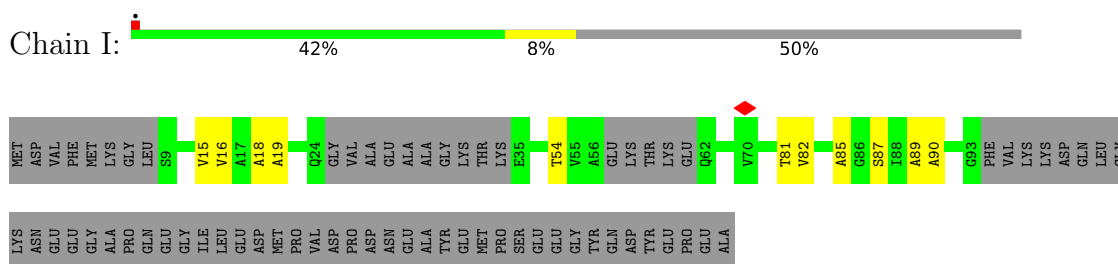
- Molecule 1: Alpha-synuclein



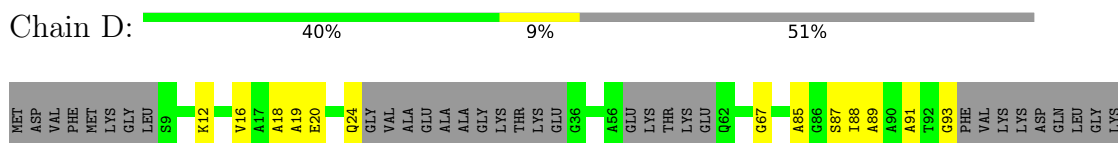
- Molecule 1: Alpha-synuclein



- Molecule 1: Alpha-synuclein



- Molecule 1: Alpha-synuclein



ASN GLU GLU VAL PHE MET LYS PRO GLN GLU GLY ILE LEU GLU ASP MET PRO VAL ASP PRO ASP ASN GLU TYR GLU MET PRO SER GLU GLU TYR GLN ASP TYR GLU PRO GLU ALA


- Molecule 1: Alpha-synuclein

Chain J:  44% 6% 50%

MET ASP VAL PHE MET LYS PRO GLN GLU LEU S9 V15 A18 A19 Q24 GLY VAL ASP PRO ASP ASN GLU ALA VAL GLU ALA ALA TYR GLU THR LYS E96 A56 GLU LYS THR LYS GLU Q62 A69 K80 T81 A85 G86 S87 G93 PHE VAL LYS ASP GLN LEU GLY LYS ASN GLU GLY ALA

PRO GLN GLU ASP MET PRO VAL ASP PRO ASP ASN GLU ALA TYR GLU MET PRO SER GLU GLU TYR GLN ASP TYR PRO GLU ALA

- Molecule 1: Alpha-synuclein

Chain E:  37% 13% 50%

MET ASP VAL PHE MET LYS PRO GLN GLU LEU S9 A10 A11 K12 A18 A19 E20 K21 T22 T23 Q24 GLY VAL ASP PRO ASP ASN GLU ALA VAL GLU THR LYS E35 T44 K45 A56 GLU LYS THR LYS GLU Q62 G67 V74 T81 V82 A85 G86 S87 I88 A89 A90 A91 T92 G93 PHE

VAL LYS ASP PHE MET LYS PRO GLN GLU LEU S9 A10 A11 K12 A18 A19 E20 K21 T22 T23 Q24 GLY VAL ASP PRO ASP ASN GLU ALA VAL GLU THR LYS E35 T44 K45 A56 GLU LYS THR LYS GLU Q62 G67 V74 T81 V82 A85 G86 S87 I88 A89 A90 A91 T92 G93 PHE

- Molecule 1: Alpha-synuclein

Chain G:  44% 6% 50%

MET ASP VAL PHE MET LYS PRO GLN GLU LEU S9 V15 V16 A19 E20 K21 T22 K23 Q24 GLY VAL ASP PRO ASP ASN GLU ALA VAL GLU THR LYS E35 A56 GLU LYS THR LYS GLU Q62 A69 V70 A85 G86 S87 I88 A89 G93 PHE VAL LYS ASP GLN LEU GLY LYS ASN GLU

GLU GLY ALA PRO GLN GLU LEU S9 V15 V16 A19 E20 K21 T22 K23 Q24 GLY VAL ASP PRO ASP ASN GLU ALA VAL GLU THR LYS E35 A56 GLU LYS THR LYS GLU Q62 A69 V70 A85 G86 S87 I88 A89 G93 PHE VAL LYS ASP GLN LEU GLY LYS ASN GLU

- Molecule 1: Alpha-synuclein

Chain B:  41% 9% 50%

MET ASP VAL PHE MET LYS PRO GLN GLU LEU S9 K12 V16 A17 A18 A19 Q24 GLY VAL ASP PRO ASP ASN GLU ALA VAL GLU THR LYS E35 S42 K43 T44 A56 GLU LYS THR LYS GLU Q62 G67 A85 I88 G93 PHE VAL LYS ASP GLN LEU GLY LYS ASN GLU

GLU GLY ALA PRO GLN GLU LEU S9 K12 V16 A17 A18 A19 Q24 GLY VAL ASP PRO ASP ASN GLU ALA VAL GLU THR LYS E35 S42 K43 T44 A56 GLU LYS THR LYS GLU Q62 G67 A85 I88 G93 PHE VAL LYS ASP GLN LEU GLY LYS ASN GLU

- Molecule 1: Alpha-synuclein

Chain F:  41% 7% 50%

MET ASP VAL PHE MET LYS PRO GLN GLU LEU S9 V16 A17 A18 A19 Q24 GLY VAL ASP PRO ASP ASN GLU ALA VAL GLU THR LYS E35 T44 V55 A56 GLU LYS THR LYS GLU Q62 G67 G68 A69 V70 V71 A76 A85 I88 A89 A90 A91 T92 G93 PHE VAL LYS ASP

MET ASP VAL PHE MET LYS PRO GLN GLU LEU S9 V16 A17 A18 A19 Q24 GLY VAL ASP PRO ASP ASN GLU ALA VAL GLU THR LYS E35 T44 V55 A56 GLU LYS THR LYS GLU Q62 G67 G68 A69 V70 V71 A76 A85 I88 A89 A90 A91 T92 G93 PHE VAL LYS ASP

GLN	LEU	GLY	LYS	ASN	GLU	GLY	GLY	ALA	PRO	GLN	GLY	ILE	LEU	GLU	ASP	MET	PRO	VAL	ASP	PRO	ASP	ASN	GLU	ALA	GLY	ALA	TYR	GLU	MET	PRO	SER	GLU	GLY	TYR	GLN	ASP	TYR	GLU	PRO	GLU	ALA
-----	-----	-----	-----	-----	-----	-----	-----	-----	-----	-----	-----	-----	-----	-----	-----	-----	-----	-----	-----	-----	-----	-----	-----	-----	-----	-----	-----	-----	-----	-----	-----	-----	-----	-----	-----	-----	-----	-----	-----	-----	-----

● Molecule 1: Alpha-synuclein



MET	ASP	VAL	PHE	MET	GLY	LYS	LEU	ASP	S9	K12	V15	A18	A19	Q24	GLY	VAL	ALA	GLU	ALA	ALA	ALA	LYS	THR	LYS	E35	A56	GLU	LYS	THR	LYS	GLU	Q62	V71	A78	Q79	K80	T81	V82	G93	PHE	VAL	LYS	LYS	ASP	GLN	LEU	GLY	LYS	ASN	GLU	GLY
-----	-----	-----	-----	-----	-----	-----	-----	-----	----	-----	-----	-----	-----	-----	-----	-----	-----	-----	-----	-----	-----	-----	-----	-----	-----	-----	-----	-----	-----	-----	-----	-----	-----	-----	-----	-----	-----	-----	-----	-----	-----	-----	-----	-----	-----	-----	-----	-----	-----	-----	-----

ALA	PRO	GLN	GLU	ILE	LEU	GLU	ASP	ASP	MET	PRO	VAL	ASP	PRO	ASP	ASN	GLU	ALA	TYR	GLU	MET	PRO	SER	GLU	GLY	GLY	TYR	GLN	ASP	TYR	GLU	PRO	GLU	ALA
-----	-----	-----	-----	-----	-----	-----	-----	-----	-----	-----	-----	-----	-----	-----	-----	-----	-----	-----	-----	-----	-----	-----	-----	-----	-----	-----	-----	-----	-----	-----	-----	-----	-----

4 Experimental information

Property	Value	Source
EM reconstruction method	HELICAL	Depositor
Imposed symmetry	HELICAL, twist=-0.73°, rise=4.91 Å, axial sym=C1	Depositor
Number of segments used	28079	Depositor
Resolution determination method	FSC 0.143 CUT-OFF	Depositor
CTF correction method	PHASE FLIPPING AND AMPLITUDE CORRECTION	Depositor
Microscope	FEI TITAN KRIOS	Depositor
Voltage (kV)	300	Depositor
Electron dose ($e^-/\text{Å}^2$)	69	Depositor
Minimum defocus (nm)	Not provided	
Maximum defocus (nm)	Not provided	
Magnification	Not provided	
Image detector	GATAN K2 SUMMIT (4k x 4k)	Depositor
Maximum map value	0.046	Depositor
Minimum map value	-0.023	Depositor
Average map value	0.000	Depositor
Map value standard deviation	0.001	Depositor
Recommended contour level	0.005	Depositor
Map size (Å)	183.56801, 183.56801, 183.56801	wwPDB
Map dimensions	280, 280, 280	wwPDB
Map angles (°)	90.0, 90.0, 90.0	wwPDB
Pixel spacing (Å)	0.6556, 0.6556, 0.6556	Depositor

5 Model quality

5.1 Standard geometry

The Z score for a bond length (or angle) is the number of standard deviations the observed value is removed from the expected value. A bond length (or angle) with $|Z| > 5$ is considered an outlier worth inspection. RMSZ is the root-mean-square of all Z scores of the bond lengths (or angles).

Mol	Chain	Bond lengths		Bond angles	
		RMSZ	# Z >5	RMSZ	# Z >5
1	A	0.40	0/468	0.76	0/630
1	B	0.44	0/468	0.78	0/630
1	C	0.45	0/468	0.76	0/630
1	D	0.47	0/459	0.80	0/618
1	E	0.38	0/468	0.77	1/630 (0.2%)
1	F	0.34	0/468	0.73	0/630
1	G	0.40	0/468	0.81	0/630
1	H	0.40	0/468	0.80	0/630
1	I	0.42	0/468	0.81	0/630
1	J	0.39	0/468	0.72	0/630
All	All	0.41	0/4671	0.78	1/6288 (0.0%)

Chiral center outliers are detected by calculating the chiral volume of a chiral center and verifying if the center is modelled as a planar moiety or with the opposite hand. A planarity outlier is detected by checking planarity of atoms in a peptide group, atoms in a mainchain group or atoms of a sidechain that are expected to be planar.

Mol	Chain	#Chirality outliers	#Planarity outliers
1	A	0	2
1	B	0	2
1	C	0	2
1	D	0	1
1	F	0	2
1	G	0	1
1	H	0	1
1	I	0	1
1	J	0	1
All	All	0	13

There are no bond length outliers.

All (1) bond angle outliers are listed below:

Mol	Chain	Res	Type	Atoms	Z	Observed(°)	Ideal(°)
1	E	74	VAL	N-CA-C	-8.33	104.63	112.96

There are no chirality outliers.

All (13) planarity outliers are listed below:

Mol	Chain	Res	Type	Group
1	A	18	ALA	Peptide
1	A	19	ALA	Peptide
1	B	18	ALA	Peptide
1	B	19	ALA	Peptide
1	C	18	ALA	Peptide
1	C	19	ALA	Peptide
1	D	19	ALA	Peptide
1	F	18	ALA	Peptide
1	F	19	ALA	Peptide
1	G	19	ALA	Peptide
1	H	19	ALA	Peptide
1	I	19	ALA	Peptide
1	J	19	ALA	Peptide

5.2 Too-close contacts

In the following table, the Non-H and H(model) columns list the number of non-hydrogen atoms and hydrogen atoms in the chain respectively. The H(added) column lists the number of hydrogen atoms added and optimized by MolProbity. The Clashes column lists the number of clashes within the asymmetric unit, whereas Symm-Clashes lists symmetry-related clashes.

Mol	Chain	Non-H	H(model)	H(added)	Clashes	Symm-Clashes
1	A	469	0	490	5	0
1	B	469	0	490	7	0
1	C	469	0	490	10	0
1	D	460	0	484	13	0
1	E	469	0	490	13	0
1	F	469	0	490	7	0
1	G	469	0	490	8	0
1	H	469	0	490	10	0
1	I	469	0	490	9	0
1	J	469	0	490	5	0
All	All	4681	0	4894	59	0

The all-atom clashscore is defined as the number of clashes found per 1000 atoms (including hydrogen atoms). The all-atom clashscore for this structure is 6.

All (59) close contacts within the same asymmetric unit are listed below, sorted by their clash magnitude.

Atom-1	Atom-2	Interatomic distance (Å)	Clash overlap (Å)
1:H:18:ALA:HB1	1:H:87:SER:HB3	1.79	0.65
1:G:87:SER:OG	1:F:18:ALA:O	2.12	0.65
1:J:18:ALA:HB1	1:J:87:SER:HB3	1.79	0.64
1:D:20:GLU:HG3	1:E:20:GLU:HG2	1.85	0.58
1:E:10:LYS:HD3	1:E:12:LYS:HE3	1.87	0.57
1:H:85:ALA:H	1:G:85:ALA:HB3	1.71	0.55
1:H:65:ASN:HD21	1:I:90:ALA:HB3	1.72	0.55
1:H:16:VAL:HA	1:G:16:VAL:HG23	1.90	0.53
1:I:81:THR:HG23	1:I:82:VAL:HG23	1.91	0.52
1:A:71:VAL:HG21	1:A:78:ALA:HB2	1.92	0.52
1:C:12:LYS:HD2	1:D:93:GLY:HA2	1.91	0.51
1:B:93:GLY:O	1:A:12:LYS:NZ	2.41	0.51
1:H:85:ALA:HB3	1:I:85:ALA:H	1.74	0.51
1:C:85:ALA:HB3	1:D:85:ALA:H	1.75	0.51
1:E:18:ALA:HB1	1:E:87:SER:HB3	1.93	0.51
1:G:85:ALA:H	1:F:85:ALA:HB3	1.75	0.51
1:A:81:THR:OG1	1:A:82:VAL:N	2.43	0.51
1:B:67:GLY:HA3	1:B:88:ILE:HD11	1.94	0.49
1:J:69:ALA:HB2	1:J:81:THR:HG21	1.94	0.49
1:D:91:ALA:HB3	1:E:91:ALA:HA	1.93	0.49
1:C:10:LYS:HD2	1:C:12:LYS:HE2	1.94	0.49
1:E:67:GLY:HA3	1:E:88:ILE:HD11	1.95	0.48
1:H:15:VAL:HG13	1:G:15:VAL:HA	1.95	0.48
1:C:67:GLY:HA3	1:C:88:ILE:HD11	1.96	0.47
1:D:24:GLN:HA	1:E:24:GLN:HB3	1.97	0.47
1:I:15:VAL:HA	1:J:15:VAL:HB	1.97	0.47
1:E:44:THR:OG1	1:E:45:LYS:N	2.47	0.47
1:G:22:THR:O	1:G:22:THR:OG1	2.32	0.45
1:E:81:THR:OG1	1:E:82:VAL:N	2.48	0.45
1:D:20:GLU:HA	1:E:20:GLU:HB3	1.98	0.45
1:D:18:ALA:HB1	1:D:87:SER:HB3	1.99	0.45
1:C:93:GLY:O	1:B:12:LYS:NZ	2.46	0.45
1:D:12:LYS:HD3	1:D:93:GLY:HA3	1.99	0.44
1:C:89:ALA:HB2	1:B:16:VAL:HG11	1.99	0.44
1:G:69:ALA:O	1:F:69:ALA:HA	2.17	0.44
1:H:54:THR:HA	1:I:54:THR:HG23	1.99	0.44
1:C:16:VAL:HG21	1:D:89:ALA:HB1	2.00	0.44
1:D:67:GLY:HA3	1:D:88:ILE:HD11	1.99	0.44
1:D:85:ALA:HB3	1:E:85:ALA:H	1.82	0.44
1:F:67:GLY:HA3	1:F:88:ILE:HG12	2.00	0.43

Continued on next page...

Continued from previous page...

Atom-1	Atom-2	Interatomic distance (Å)	Clash overlap (Å)
1:H:16:VAL:HB	1:I:89:ALA:HB1	2.00	0.43
1:F:9:SER:O	1:F:9:SER:OG	2.33	0.43
1:I:85:ALA:HB3	1:J:85:ALA:H	1.83	0.43
1:I:18:ALA:HB1	1:I:87:SER:HB3	2.00	0.43
1:B:9:SER:O	1:B:9:SER:OG	2.30	0.43
1:E:9:SER:O	1:E:9:SER:OG	2.29	0.42
1:C:85:ALA:H	1:B:85:ALA:HB3	1.85	0.42
1:B:42:SER:OG	1:B:43:LYS:N	2.53	0.42
1:C:18:ALA:HB1	1:C:87:SER:HB3	2.01	0.42
1:C:16:VAL:HG11	1:D:89:ALA:HB2	2.02	0.41
1:J:80:LYS:HE2	1:J:80:LYS:HB3	1.95	0.41
1:H:54:THR:O	1:H:54:THR:OG1	2.33	0.41
1:D:16:VAL:HG11	1:E:89:ALA:HB2	2.03	0.41
1:E:12:LYS:HD3	1:E:93:GLY:HA2	2.02	0.40
1:H:16:VAL:HG23	1:I:16:VAL:HA	2.02	0.40
1:G:89:ALA:HB1	1:F:16:VAL:HG11	2.01	0.40
1:A:78:ALA:HB1	1:A:81:THR:HG21	2.03	0.40
1:F:71:VAL:HG12	1:F:76:ALA:HB1	2.02	0.40
1:A:80:LYS:HE2	1:A:80:LYS:HB3	1.96	0.40

There are no symmetry-related clashes.

5.3 Torsion angles [i](#)

5.3.1 Protein backbone [i](#)

In the following table, the Percentiles column shows the percent Ramachandran outliers of the chain as a percentile score with respect to all PDB entries followed by that with respect to all EM entries.

The Analysed column shows the number of residues for which the backbone conformation was analysed, and the total number of residues.

Mol	Chain	Analysed	Favoured	Allowed	Outliers	Percentiles	
1	A	64/140 (46%)	51 (80%)	13 (20%)	0	100	100
1	B	64/140 (46%)	54 (84%)	10 (16%)	0	100	100
1	C	64/140 (46%)	55 (86%)	9 (14%)	0	100	100
1	D	63/140 (45%)	54 (86%)	9 (14%)	0	100	100
1	E	64/140 (46%)	52 (81%)	12 (19%)	0	100	100

Continued on next page...

Continued from previous page...

Mol	Chain	Analysed	Favoured	Allowed	Outliers	Percentiles	
1	F	64/140 (46%)	53 (83%)	11 (17%)	0	100	100
1	G	64/140 (46%)	49 (77%)	14 (22%)	1 (2%)	7	36
1	H	64/140 (46%)	51 (80%)	13 (20%)	0	100	100
1	I	64/140 (46%)	49 (77%)	15 (23%)	0	100	100
1	J	64/140 (46%)	49 (77%)	15 (23%)	0	100	100
All	All	639/1400 (46%)	517 (81%)	121 (19%)	1 (0%)	44	74

All (1) Ramachandran outliers are listed below:

Mol	Chain	Res	Type
1	G	20	GLU

5.3.2 Protein sidechains ⓘ

In the following table, the Percentiles column shows the percent sidechain outliers of the chain as a percentile score with respect to all PDB entries followed by that with respect to all EM entries.

The Analysed column shows the number of residues for which the sidechain conformation was analysed, and the total number of residues.

Mol	Chain	Analysed	Rotameric	Outliers	Percentiles	
1	A	46/103 (45%)	45 (98%)	1 (2%)	45	66
1	B	46/103 (45%)	45 (98%)	1 (2%)	45	66
1	E	5/103 (5%)	5 (100%)	0	100	100
1	F	46/103 (45%)	43 (94%)	3 (6%)	15	43
1	G	37/103 (36%)	37 (100%)	0	100	100
All	All	180/515 (35%)	175 (97%)	5 (3%)	38	62

All (5) residues with a non-rotameric sidechain are listed below:

Mol	Chain	Res	Type
1	B	44	THR
1	F	16	VAL
1	F	44	THR
1	F	55	VAL
1	A	15	VAL

Sometimes sidechains can be flipped to improve hydrogen bonding and reduce clashes. All (1) such sidechains are listed below:

Mol	Chain	Res	Type
1	B	79	GLN

5.3.3 RNA [i](#)

There are no RNA molecules in this entry.

5.4 Non-standard residues in protein, DNA, RNA chains [i](#)

There are no non-standard protein/DNA/RNA residues in this entry.

5.5 Carbohydrates [i](#)

There are no oligosaccharides in this entry.

5.6 Ligand geometry [i](#)

There are no ligands in this entry.

5.7 Other polymers [i](#)

There are no such residues in this entry.

5.8 Polymer linkage issues [i](#)

There are no chain breaks in this entry.

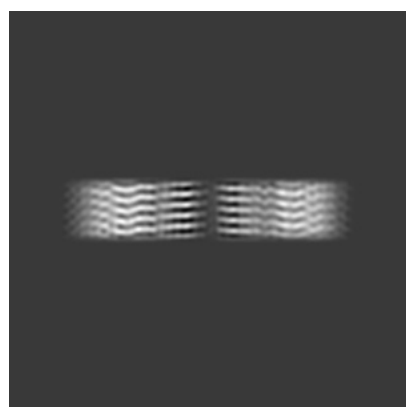
6 Map visualisation [i](#)

This section contains visualisations of the EMDB entry EMD-4996. These allow visual inspection of the internal detail of the map and identification of artifacts.

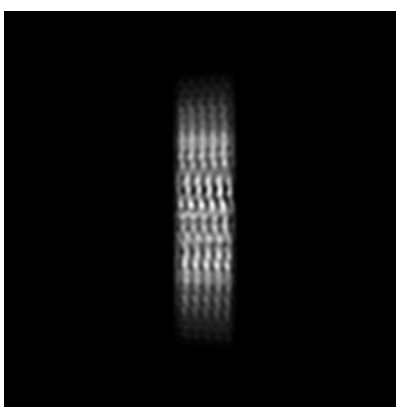
No raw map or half-maps were deposited for this entry and therefore no images, graphs, etc. pertaining to the raw map can be shown.

6.1 Orthogonal projections [i](#)

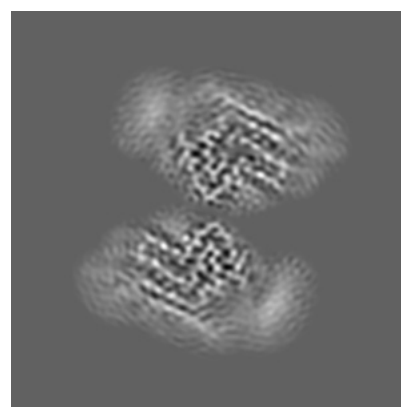
6.1.1 Primary map



X



Y



Z

The images above show the map projected in three orthogonal directions.

6.2 Central slices [i](#)

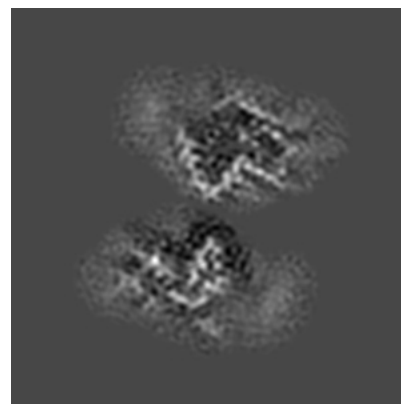
6.2.1 Primary map



X Index: 140



Y Index: 140



Z Index: 140

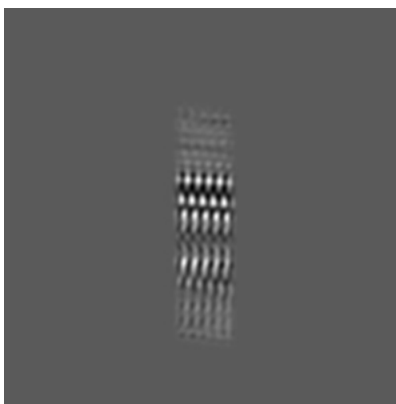
The images above show central slices of the map in three orthogonal directions.

6.3 Largest variance slices [i](#)

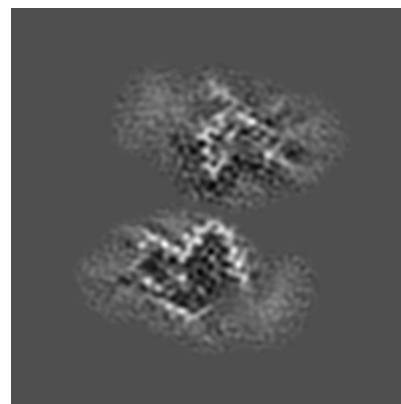
6.3.1 Primary map



X Index: 134



Y Index: 100

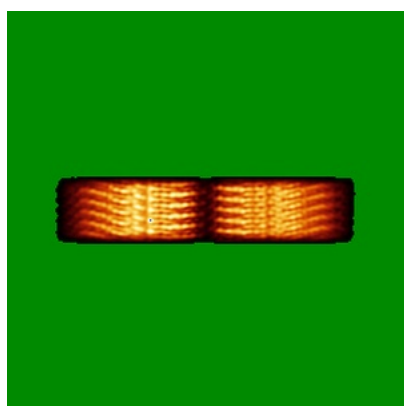


Z Index: 136

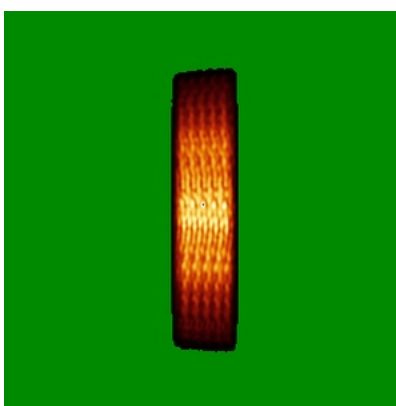
The images above show the largest variance slices of the map in three orthogonal directions.

6.4 Orthogonal standard-deviation projections (False-color) [i](#)

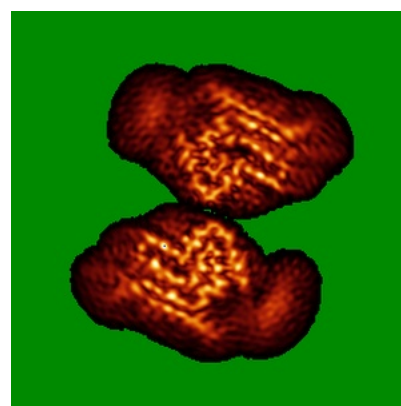
6.4.1 Primary map



X



Y



Z

The images above show the map standard deviation projections with false color in three orthogonal directions. Minimum values are shown in green, max in blue, and dark to light orange shades represent small to large values respectively.

6.5 Orthogonal surface views [i](#)

6.5.1 Primary map



The images above show the 3D surface view of the map at the recommended contour level 0.005. These images, in conjunction with the slice images, may facilitate assessment of whether an appropriate contour level has been provided.

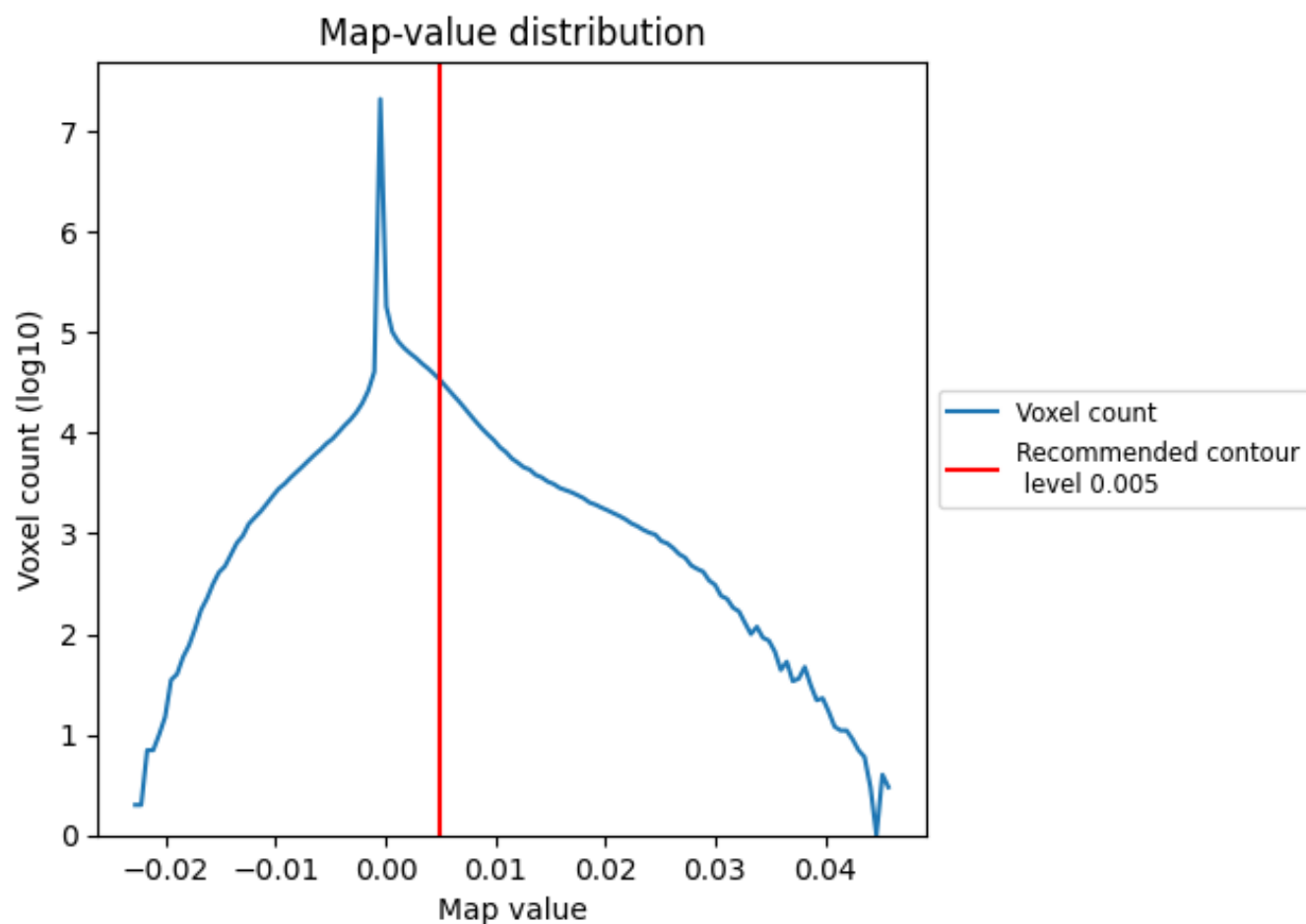
6.6 Mask visualisation [i](#)

This section was not generated. No masks/segmentation were deposited.

7 Map analysis [i](#)

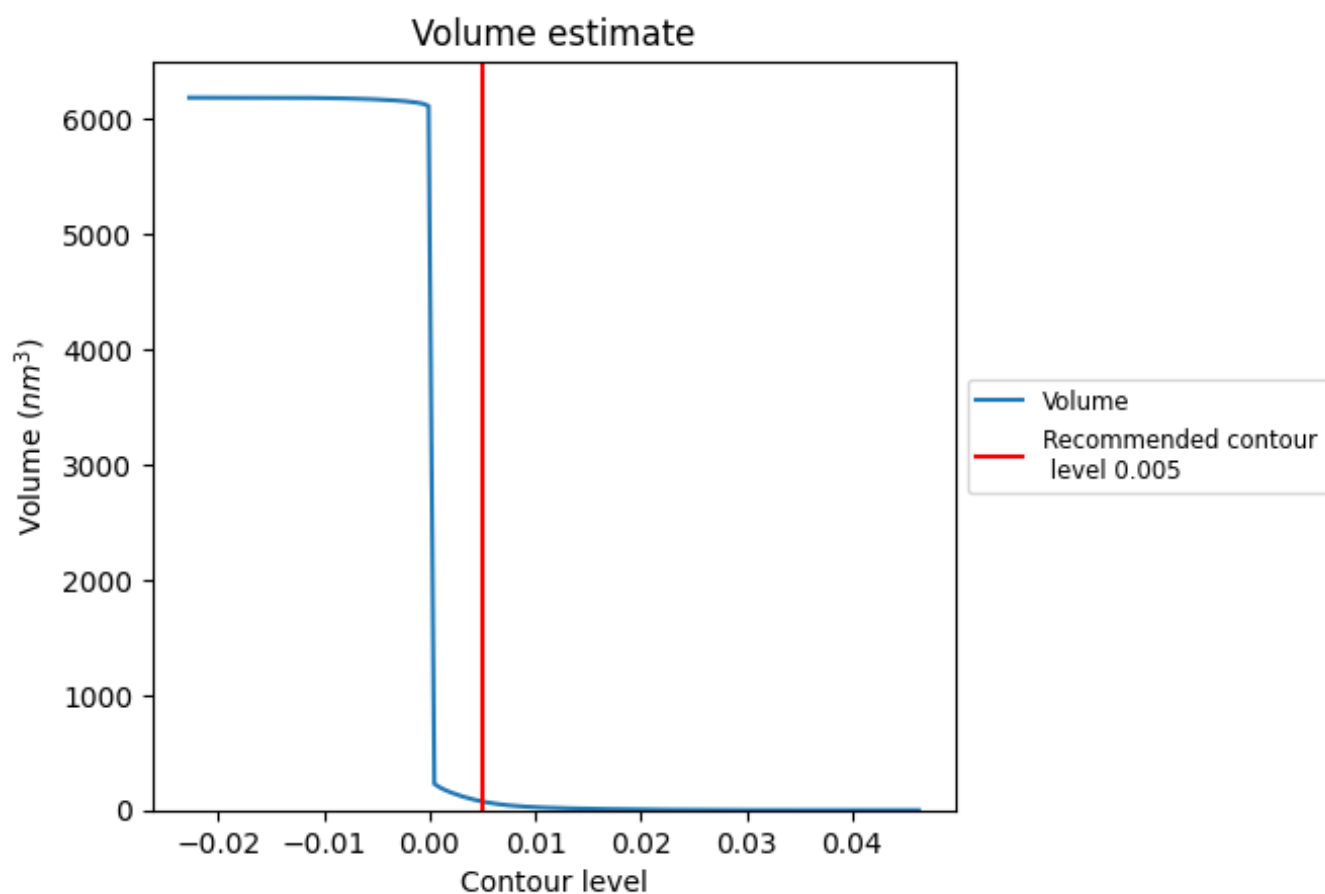
This section contains the results of statistical analysis of the map.

7.1 Map-value distribution [i](#)



The map-value distribution is plotted in 128 intervals along the x-axis. The y-axis is logarithmic. A spike in this graph at zero usually indicates that the volume has been masked.

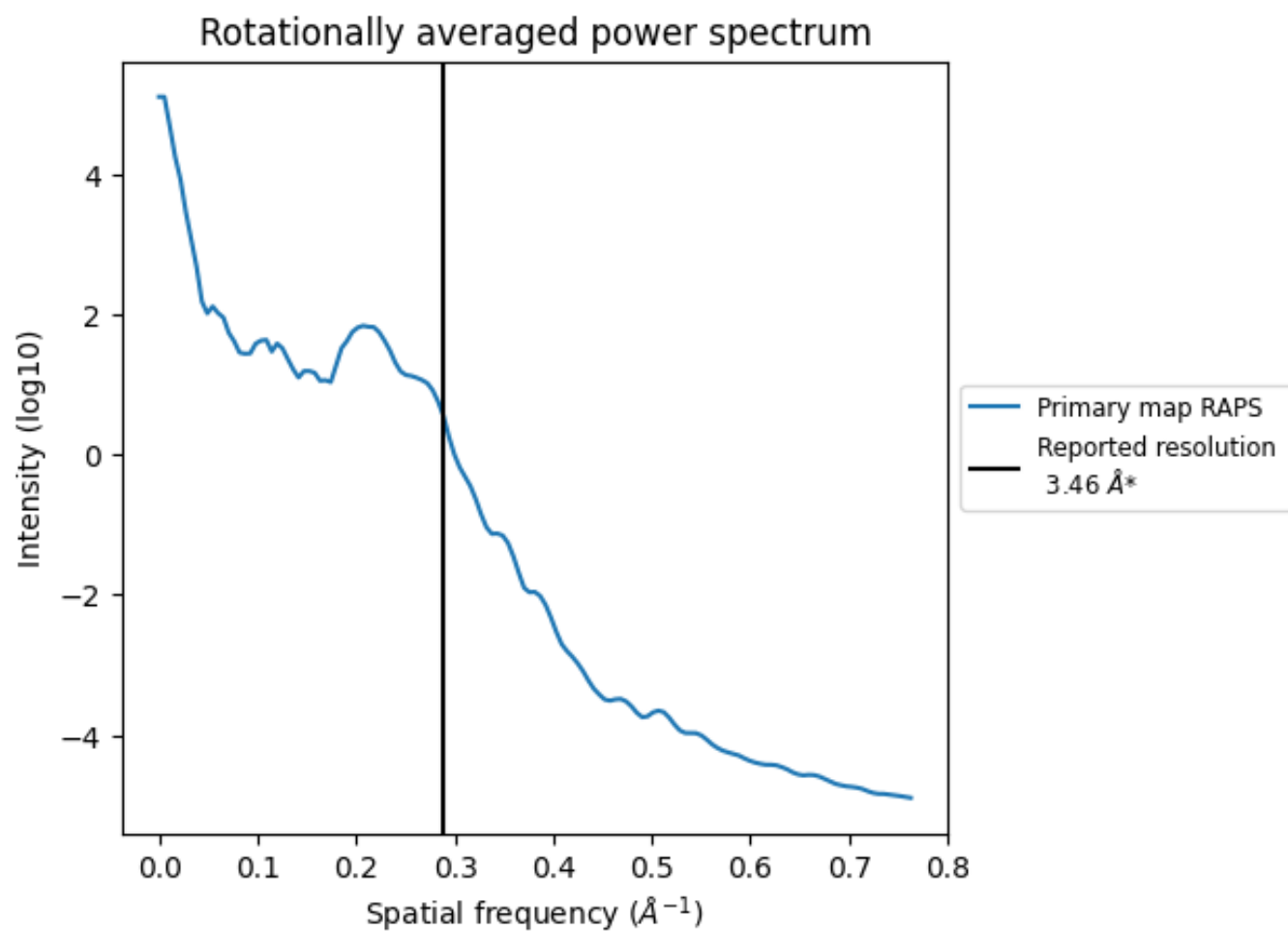
7.2 Volume estimate [i](#)



The volume at the recommended contour level is 75 nm^3 ; this corresponds to an approximate mass of 68 kDa.

The volume estimate graph shows how the enclosed volume varies with the contour level. The recommended contour level is shown as a vertical line and the intersection between the line and the curve gives the volume of the enclosed surface at the given level.

7.3 Rotationally averaged power spectrum ⓘ



*Reported resolution corresponds to spatial frequency of 0.289 Å⁻¹

8 Fourier-Shell correlation

This section was not generated. No FSC curve or half-maps provided.

9 Map-model fit [i](#)

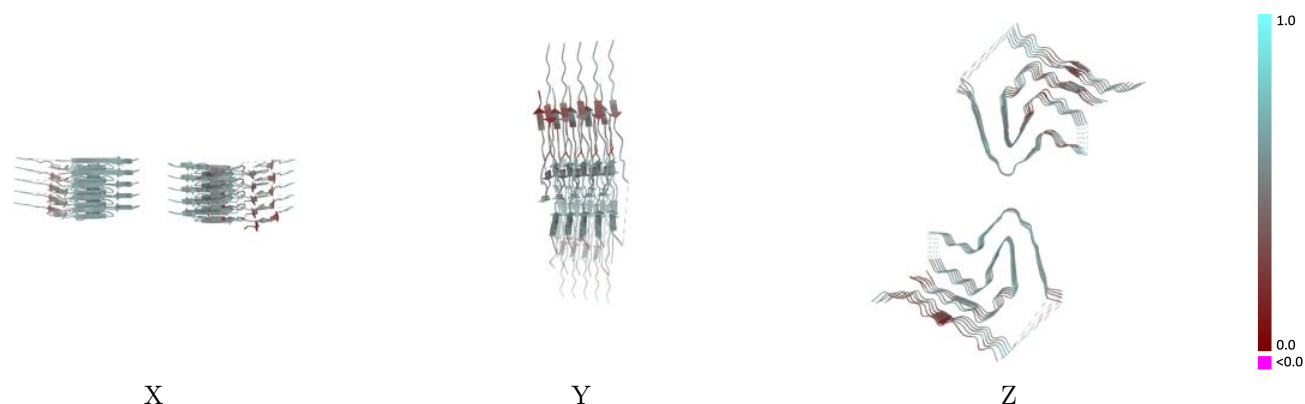
This section contains information regarding the fit between EMDB map EMD-4996 and PDB model 6RTB. Per-residue inclusion information can be found in section 3 on page 5.

9.1 Map-model overlay [i](#)



The images above show the 3D surface view of the map at the recommended contour level 0.005 at 50% transparency in yellow overlaid with a ribbon representation of the model coloured in blue. These images allow for the visual assessment of the quality of fit between the atomic model and the map.

9.2 Q-score mapped to coordinate model [i](#)

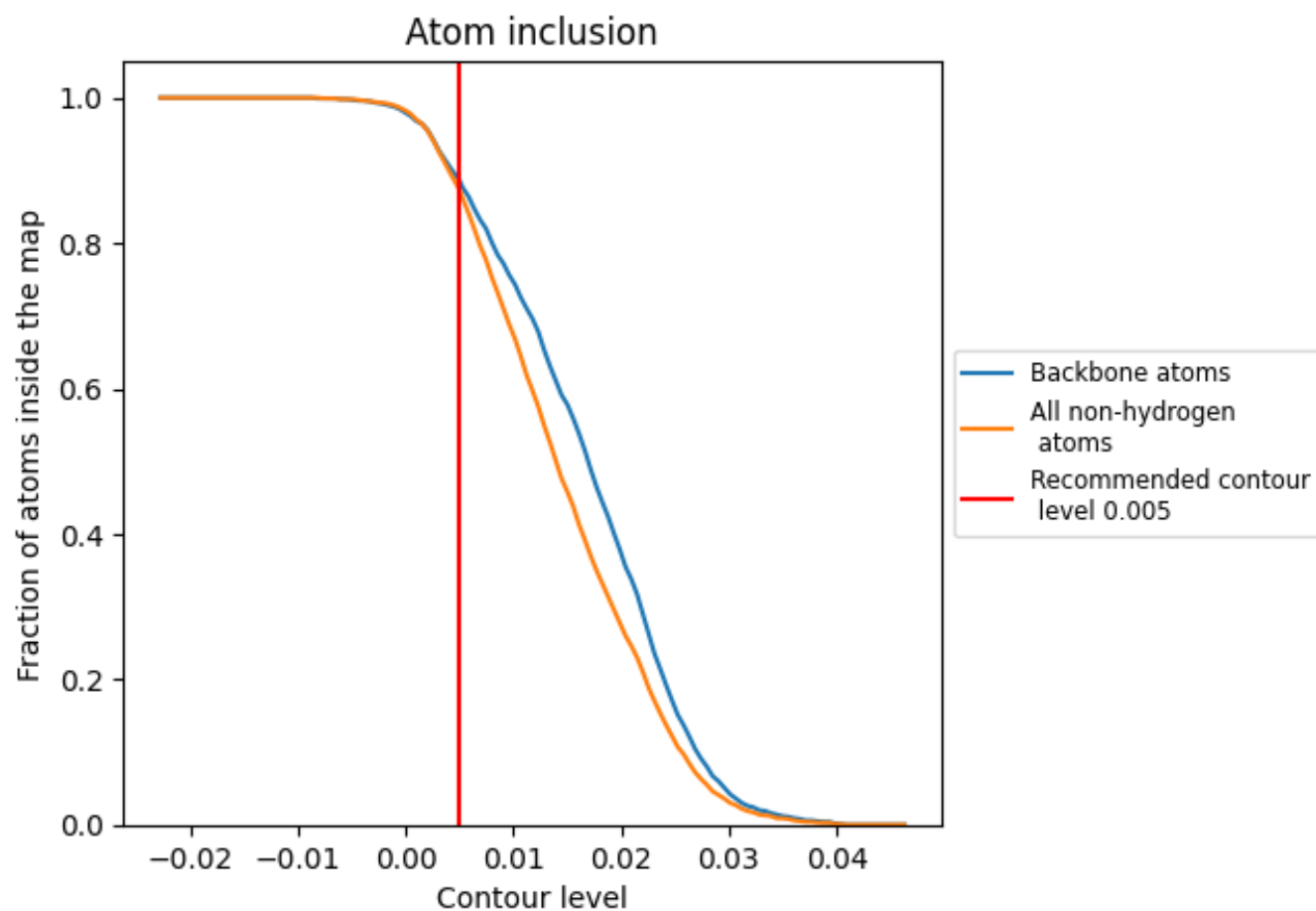


The images above show the model with each residue coloured according to its Q-score. This shows their resolvability in the map with higher Q-score values reflecting better resolvability. Please note: Q-score is calculating the resolvability of atoms, and thus high values are only expected at resolutions at which atoms can be resolved. Low Q-score values may therefore be expected for many entries.

9.3 Atom inclusion mapped to coordinate model [i](#)

This section was not generated.

9.4 Atom inclusion [i](#)



At the recommended contour level, 89% of all backbone atoms, 87% of all non-hydrogen atoms, are inside the map.

9.5 Map-model fit summary ⓘ

The table lists the average atom inclusion at the recommended contour level (0.005) and Q-score for the entire model and for each chain.

Chain	Atom inclusion	Q-score
All	<div><div></div></div> 0.8730	<div><div></div></div> 0.5110
A	<div><div></div></div> 0.8800	<div><div></div></div> 0.5210
B	<div><div></div></div> 0.9020	<div><div></div></div> 0.5250
C	<div><div></div></div> 0.8970	<div><div></div></div> 0.5220
D	<div><div></div></div> 0.8950	<div><div></div></div> 0.5200
E	<div><div></div></div> 0.8100	<div><div></div></div> 0.5050
F	<div><div></div></div> 0.7760	<div><div></div></div> 0.4870
G	<div><div></div></div> 0.8910	<div><div></div></div> 0.5050
H	<div><div></div></div> 0.8910	<div><div></div></div> 0.5050
I	<div><div></div></div> 0.8910	<div><div></div></div> 0.5070
J	<div><div></div></div> 0.8930	<div><div></div></div> 0.5120

1.0

0.0

<0.0