



wwPDB X-ray Structure Validation Summary Report ⓘ

Mar 5, 2026 – 11:13 AM UTC

PDB ID : 2REQ / pdb_00002req
Title : METHYLMALONYL-COA MUTASE, NON-PRODUCTIVE COA COMPLEX, IN OPEN CONFORMATION REPRESENTING SUBSTRATE-FREE STATE
Authors : Evans, P.R.; Mancia, F.
Deposited on : 1997-09-22
Resolution : 2.50 Å(reported)

This is a wwPDB X-ray Structure Validation Summary Report for a publicly released PDB entry.

We welcome your comments at validation@mail.wwpdb.org

A user guide is available at

<https://www.wwpdb.org/validation/2017/XrayValidationReportHelp>

with specific help available everywhere you see the ⓘ symbol.

The types of validation reports are described at

<http://www.wwpdb.org/validation/2017/FAQs#types>.

The following versions of software and data (see [references ⓘ](#)) were used in the production of this report:

MolProbity	:	4-5-2 with Phenix2.0
Mogul	:	2022.3.0, CSD as543be (2022)
Xtriage (Phenix)	:	2.0
EDS	:	3.0
Buster-report	:	wwPDB partial adaption of 1.1.7 (2018)
Percentile statistics	:	20250101.v01 (using entries in the PDB archive January 1st 2025)
CCP4	:	9.0.010 (Gargrove)
Density-Fitness	:	1.0.12
Ideal geometry (proteins)	:	Engh & Huber (2001)
Ideal geometry (DNA, RNA)	:	Parkinson et al. (1996)
Validation Pipeline (wwPDB-VP)	:	2.49

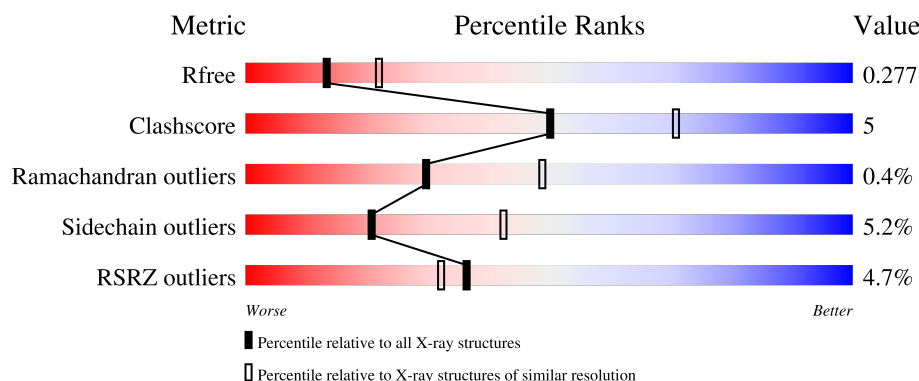
1 Overall quality at a glance

The following experimental techniques were used to determine the structure:

X-RAY DIFFRACTION

The reported resolution of this entry is 2.50 Å.

Percentile scores (ranging between 0-100) for global validation metrics of the entry are shown in the following graphic. The table shows the number of entries on which the scores are based.



Metric	Whole archive (#Entries)	Similar resolution (#Entries, resolution range(Å))
R_{free}	180053	5829 (2.50-2.50)
Clashscore	190562	6492 (2.50-2.50)
Ramachandran outliers	187476	6378 (2.50-2.50)
Sidechain outliers	187428	6380 (2.50-2.50)
RSRZ outliers	180081	5833 (2.50-2.50)

The table below summarises the geometric issues observed across the polymeric chains and their fit to the electron density. The red, orange, yellow and green segments of the lower bar indicate the fraction of residues that contain outliers for ≥ 3 , 2, 1 and 0 types of geometric quality criteria respectively. A grey segment represents the fraction of residues that are not modelled. The numeric value for each fraction is indicated below the corresponding segment, with a dot representing fractions $\leq 5\%$. The upper red bar (where present) indicates the fraction of residues that have poor fit to the electron density. The numeric value is given above the bar.

Mol	Chain	Length	Quality of chain
1	A	727	 2% 52% 38% 9%
1	C	727	 3% 52% 39% 8% .
2	B	637	 8% 55% 35% 7% .
2	D	637	 6% 54% 35% 7% .

2 Entry composition

There are 5 unique types of molecules in this entry. The entry contains 21240 atoms, of which 0 are hydrogens and 0 are deuteriums.

In the tables below, the ZeroOcc column contains the number of atoms modelled with zero occupancy, the AltConf column contains the number of residues with at least one atom in alternate conformation and the Trace column contains the number of residues modelled with at most 2 atoms.

- Molecule 1 is a protein called METHYLMALONYL-COA MUTASE.

Mol	Chain	Residues	Atoms					ZeroOcc	AltConf	Trace
1	A	725	Total	C	N	O	S	0	0	0
			5564	3518	965	1057	24			
1	C	725	Total	C	N	O	S	0	0	0
			5564	3518	965	1057	24			

- Molecule 2 is a protein called METHYLMALONYL-COA MUTASE.

Mol	Chain	Residues	Atoms					ZeroOcc	AltConf	Trace
2	B	619	Total	C	N	O	S	0	0	0
			4616	2912	795	896	13			
2	D	619	Total	C	N	O	S	0	0	0
			4616	2912	795	896	13			

There are 6 discrepancies between the modelled and reference sequences:

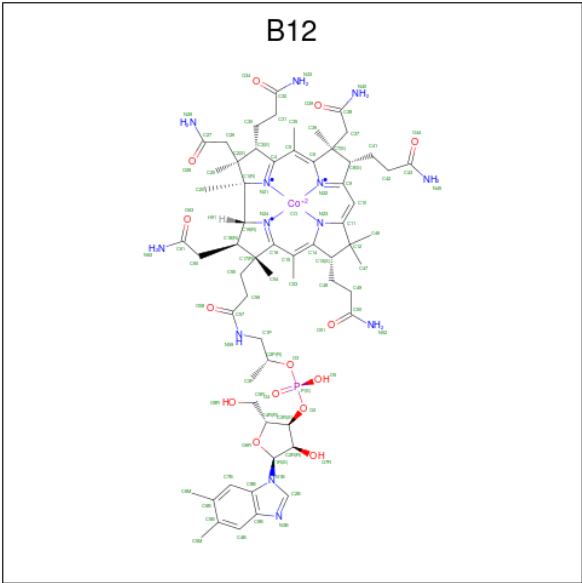
Chain	Residue	Modelled	Actual	Comment	Reference
B	203	GLY	ALA	SEE REMARK 999	UNP P11652
B	330	GLU	ASP	SEE REMARK 999	UNP P11652
B	331	LEU	VAL	SEE REMARK 999	UNP P11652
D	203	GLY	ALA	SEE REMARK 999	UNP P11652
D	330	GLU	ASP	SEE REMARK 999	UNP P11652
D	331	LEU	VAL	SEE REMARK 999	UNP P11652

- Molecule 3 is COENZYME A (CCD ID: COA) (formula: C₂₁H₃₆N₇O₁₆P₃S).



Mol	Chain	Residues	Atoms					ZeroOcc	AltConf
3	A	1	Total	C	N	O	P	0	0
			31	10	5	13	3		
3	C	1	Total	C	N	O	P	0	0
			31	10	5	13	3		

- Molecule 4 is COBALAMIN (CCD ID: B12) (formula: C₆₂H₈₉CoN₁₃O₁₄P).



Mol	Chain	Residues	Atoms						ZeroOcc	AltConf
4	A	1	Total	C	Co	N	O	P	0	0
			91	62	1	13	14	1		
4	C	1	Total	C	Co	N	O	P	0	0
			91	62	1	13	14	1		

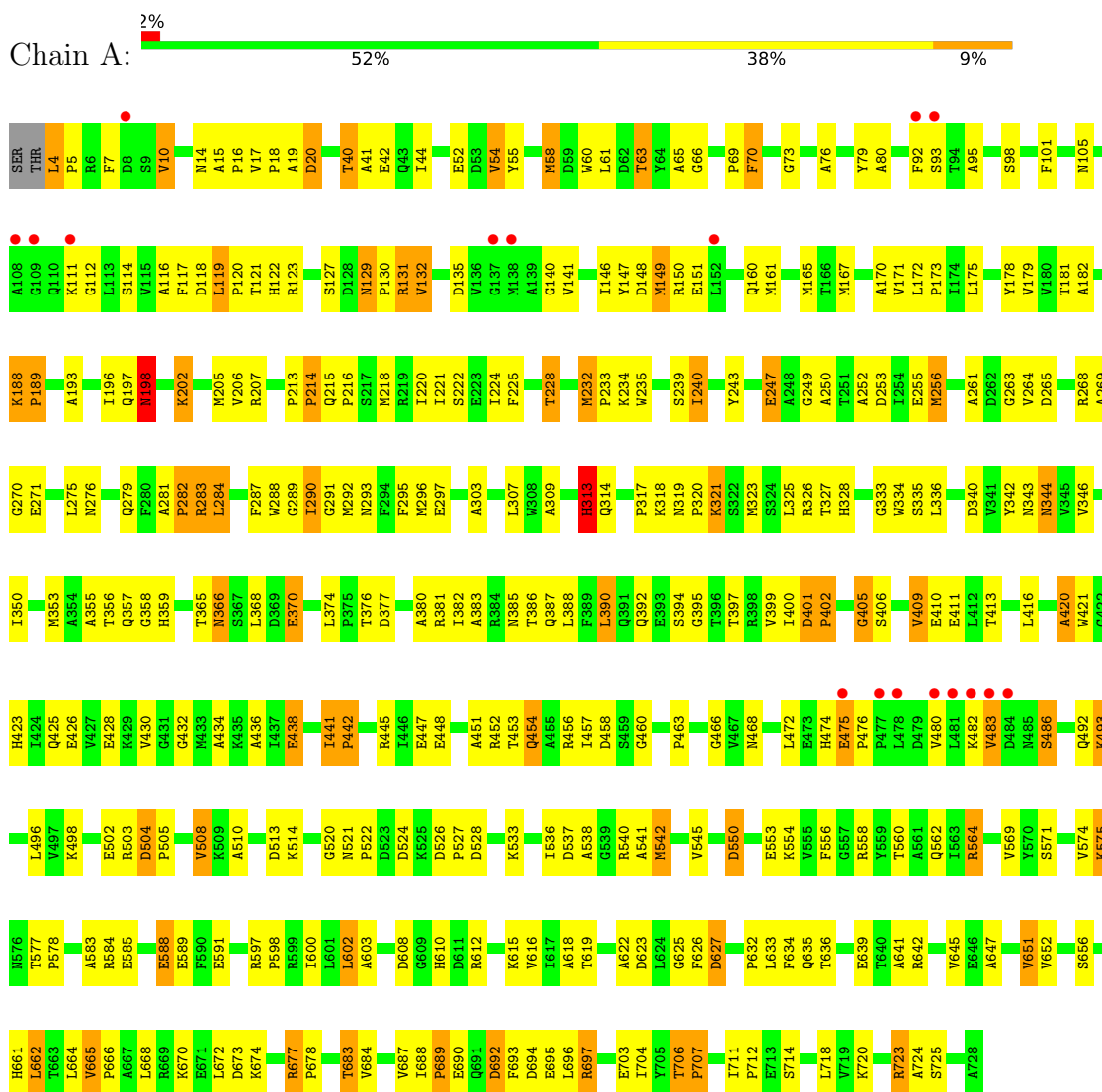
- Molecule 5 is water.

Mol	Chain	Residues	Atoms		ZeroOcc	AltConf
5	A	206	Total 206	O 206	0	0
5	B	112	Total 112	O 112	0	0
5	C	201	Total 201	O 201	0	0
5	D	117	Total 117	O 117	0	0

3 Residue-property plots

These plots are drawn for all protein, RNA, DNA and oligosaccharide chains in the entry. The first graphic for a chain summarises the proportions of the various outlier classes displayed in the second graphic. The second graphic shows the sequence view annotated by issues in geometry and electron density. Residues are color-coded according to the number of geometric quality criteria for which they contain at least one outlier: green = 0, yellow = 1, orange = 2 and red = 3 or more. A red dot above a residue indicates a poor fit to the electron density ($RSRZ > 2$). Stretches of 2 or more consecutive residues without any outlier are shown as a green connector. Residues present in the sample, but not in the model, are shown in grey.

• Molecule 1: METHYLMALONYL-COA MUTASE



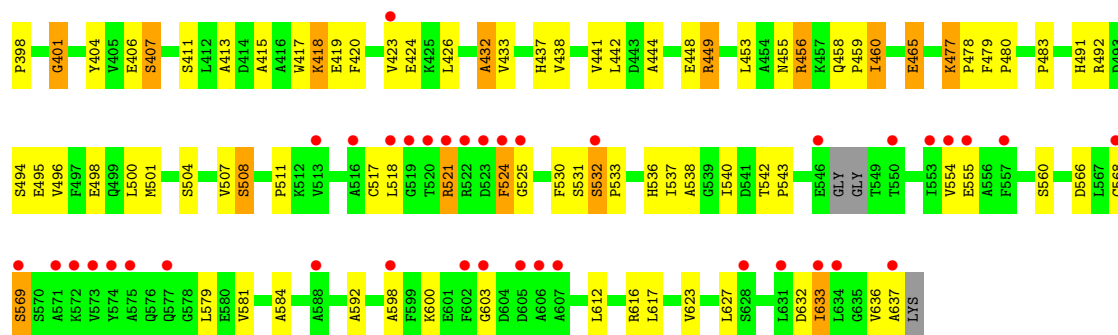
• Molecule 1: METHYLMALONYL-COA MUTASE



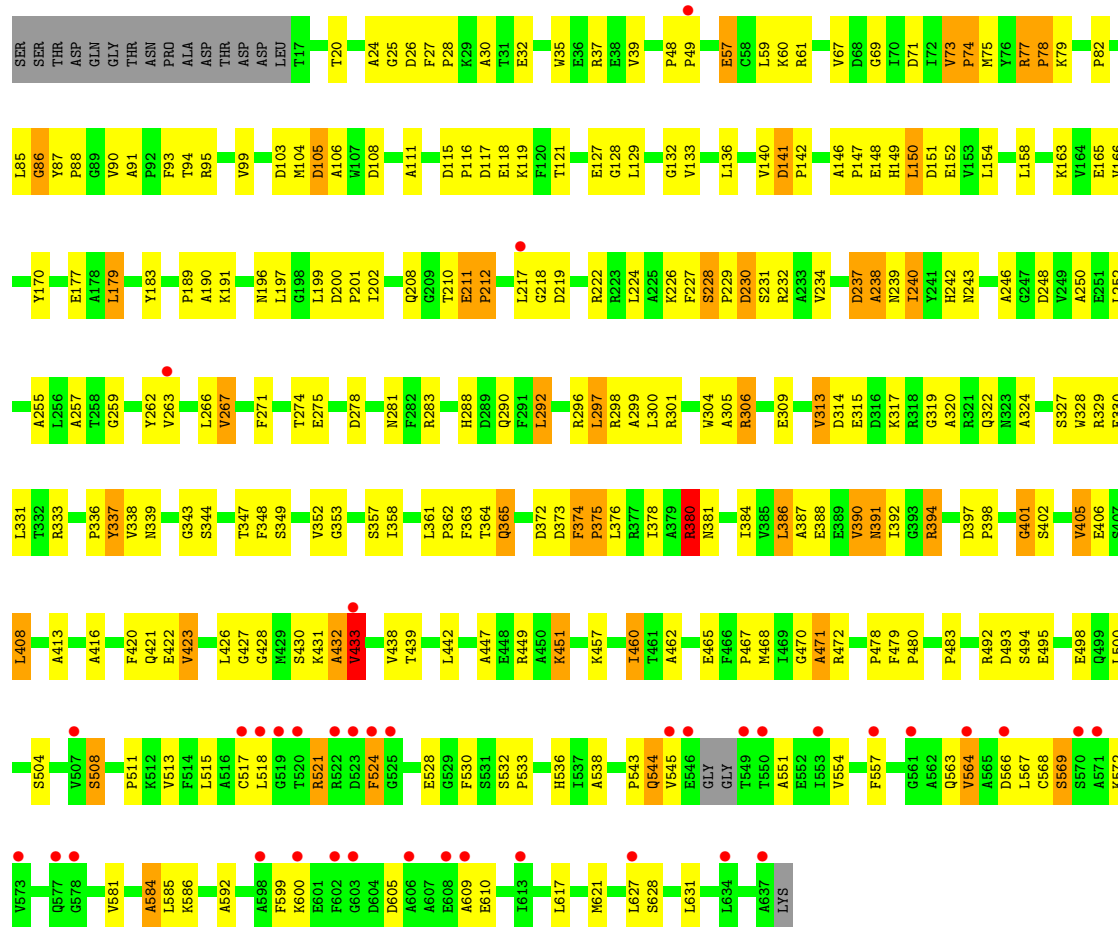


Frequency	Percentage
8%	8%
55%	55%
35%	35%
7%	7%





• Molecule 2: METHYLMALONYL-COA MUTASE



4 Data and refinement statistics

Property	Value	Source
Space group	P 1 21 1	Depositor
Cell constants a, b, c, α , β , γ	104.95Å 162.06Å 104.20Å 90.00° 108.75° 90.00°	Depositor
Resolution (Å)	20.00 – 2.50 20.00 – 2.50	Depositor EDS
% Data completeness (in resolution range)	99.6 (20.00-2.50) 99.6 (20.00-2.50)	Depositor EDS
R_{merge}	0.09	Depositor
R_{sym}	(Not available)	Depositor
$\langle I/\sigma(I) \rangle$ ¹	3.28 (at 2.50Å)	Xtriage
Refinement program	REFMAC	Depositor
R, R_{free}	0.259 , 0.325 0.224 , 0.277	Depositor DCC
R_{free} test set	4538 reflections (3.99%)	wwPDB-VP
Wilson B-factor (Å ²)	44.0	Xtriage
Anisotropy	0.185	Xtriage
Bulk solvent k_{sol} (e/Å ³), B_{sol} (Å ²)	0.33 , 44.3	EDS
L-test for twinning ²	$\langle L \rangle = 0.51$, $\langle L^2 \rangle = 0.34$	Xtriage
Estimated twinning fraction	0.009 for l,-k,h	Xtriage
F_o, F_c correlation	0.93	EDS
Total number of atoms	21240	wwPDB-VP
Average B, all atoms (Å ²)	46.0	wwPDB-VP

Xtriage's analysis on translational NCS is as follows: *The largest off-origin peak in the Patterson function is 3.06% of the height of the origin peak. No significant pseudotranslation is detected.*

¹Intensities estimated from amplitudes.

²Theoretical values of $\langle |L| \rangle$, $\langle L^2 \rangle$ for acentric reflections are 0.5, 0.333 respectively for untwinned datasets, and 0.375, 0.2 for perfectly twinned datasets.

5 Model quality [i](#)

5.1 Standard geometry [i](#)

Bond lengths and bond angles in the following residue types are not validated in this section: B12, COA

The Z score for a bond length (or angle) is the number of standard deviations the observed value is removed from the expected value. A bond length (or angle) with $|Z| > 5$ is considered an outlier worth inspection. RMSZ is the root-mean-square of all Z scores of the bond lengths (or angles).

Mol	Chain	Bond lengths		Bond angles	
		RMSZ	# $ Z > 5$	RMSZ	# $ Z > 5$
1	A	0.86	1/5680 (0.0%)	2.54	483/7715 (6.3%)
1	C	0.90	1/5680 (0.0%)	2.59	515/7715 (6.7%)
2	B	0.78	0/4706	2.42	348/6414 (5.4%)
2	D	0.75	0/4706	2.43	353/6414 (5.5%)
All	All	0.83	2/20772 (0.0%)	2.50	1699/28258 (6.0%)

Chiral center outliers are detected by calculating the chiral volume of a chiral center and verifying if the center is modelled as a planar moiety or with the opposite hand. A planarity outlier is detected by checking planarity of atoms in a peptide group, atoms in a mainchain group or atoms of a sidechain that are expected to be planar.

Mol	Chain	#Chirality outliers	#Planarity outliers
1	A	0	19
1	C	0	23
2	B	0	18
2	D	0	10
All	All	0	70

All (2) bond length outliers are listed below:

Mol	Chain	Res	Type	Atoms	Z	Observed(Å)	Ideal(Å)
1	C	422	GLY	N-CA	-5.10	1.39	1.45
1	A	42	GLU	N-CA	-5.07	1.39	1.46

The worst 5 of 1699 bond angle outliers are listed below:

Mol	Chain	Res	Type	Atoms	Z	Observed(°)	Ideal(°)
1	C	540	ARG	CD-NE-CZ	20.98	153.77	124.40
1	A	540	ARG	CD-NE-CZ	15.21	145.69	124.40
2	B	335	ASP	CA-CB-CG	14.76	127.36	112.60

Continued on next page...

Continued from previous page...

Mol	Chain	Res	Type	Atoms	Z	Observed(°)	Ideal(°)
2	B	460	ILE	CB-CA-C	14.67	127.14	110.41
2	D	420	PHE	CA-CB-CG	13.86	127.66	113.80

There are no chirality outliers.

5 of 70 planarity outliers are listed below:

Mol	Chain	Res	Type	Group
1	A	116	ALA	Mainchain
1	A	167	MET	Mainchain
1	A	20	ASP	Mainchain
1	A	40	THR	Mainchain
1	A	70	PHE	Mainchain

5.2 Too-close contacts [i](#)

In the following table, the Non-H and H(model) columns list the number of non-hydrogen atoms and hydrogen atoms in the chain respectively. The H(added) column lists the number of hydrogen atoms added and optimized by MolProbity. The Clashes column lists the number of clashes within the asymmetric unit, whereas Symm-Clashes lists symmetry-related clashes.

Mol	Chain	Non-H	H(model)	H(added)	Clashes	Symm-Clashes
1	A	5564	0	5472	47	0
1	C	5564	0	5472	51	0
2	B	4616	0	4428	50	0
2	D	4616	0	4428	51	0
3	A	31	0	11	1	0
3	C	31	0	11	1	0
4	A	91	0	88	19	0
4	C	91	0	88	11	0
5	A	206	0	0	1	0
5	B	112	0	0	0	0
5	C	201	0	0	0	0
5	D	117	0	0	0	0
All	All	21240	0	19998	216	0

The all-atom clashscore is defined as the number of clashes found per 1000 atoms (including hydrogen atoms). The all-atom clashscore for this structure is 5.

The worst 5 of 216 close contacts within the same asymmetric unit are listed below, sorted by their clash magnitude.

Atom-1	Atom-2	Interatomic distance (Å)	Clash overlap (Å)
4:A:800:B12:H362	4:A:800:B12:H351	1.22	1.11
4:C:800:B12:H362	4:C:800:B12:H351	1.17	1.09
4:A:800:B12:H531	4:A:800:B12:H552	1.09	1.09
4:A:800:B12:H552	4:A:800:B12:C53	1.98	0.93
2:B:281:ASN:HD22	2:B:323:ASN:HD21	1.21	0.88

There are no symmetry-related clashes.

5.3 Torsion angles [i](#)

5.3.1 Protein backbone [i](#)

In the following table, the Percentiles column shows the percent Ramachandran outliers of the chain as a percentile score with respect to all X-ray entries followed by that with respect to entries of similar resolution.

The Analysed column shows the number of residues for which the backbone conformation was analysed, and the total number of residues.

Mol	Chain	Analysed	Favoured	Allowed	Outliers	Percentiles	
1	A	723/727 (99%)	682 (94%)	36 (5%)	5 (1%)	18	34
1	C	723/727 (99%)	688 (95%)	33 (5%)	2 (0%)	36	55
2	B	615/637 (96%)	569 (92%)	43 (7%)	3 (0%)	24	43
2	D	615/637 (96%)	576 (94%)	38 (6%)	1 (0%)	43	63
All	All	2676/2728 (98%)	2515 (94%)	150 (6%)	11 (0%)	30	49

5 of 11 Ramachandran outliers are listed below:

Mol	Chain	Res	Type
1	C	486	SER
1	A	10	VAL
1	A	486	SER
1	A	542	MET
1	A	575	LYS

5.3.2 Protein sidechains [i](#)

In the following table, the Percentiles column shows the percent sidechain outliers of the chain as a percentile score with respect to all X-ray entries followed by that with respect to entries of similar resolution.

The Analysed column shows the number of residues for which the sidechain conformation was analysed, and the total number of residues.

Mol	Chain	Analysed	Rotameric	Outliers	Percentiles	
1	A	571/590 (97%)	540 (95%)	31 (5%)	20	41
1	C	571/590 (97%)	543 (95%)	28 (5%)	22	45
2	B	457/509 (90%)	438 (96%)	19 (4%)	26	52
2	D	457/509 (90%)	429 (94%)	28 (6%)	17	35
All	All	2056/2198 (94%)	1950 (95%)	106 (5%)	21	42

5 of 106 residues with a non-rotameric sidechain are listed below:

Mol	Chain	Res	Type
1	C	239	SER
1	C	574	VAL
2	D	468	MET
1	C	265	ASP
1	C	381	ARG

Sometimes sidechains can be flipped to improve hydrogen bonding and reduce clashes. 5 of 30 such sidechains are listed below:

Mol	Chain	Res	Type
2	B	391	ASN
2	D	323	ASN
1	C	198	ASN
2	D	391	ASN
2	D	196	ASN

5.3.3 RNA ⓘ

There are no RNA molecules in this entry.

5.4 Non-standard residues in protein, DNA, RNA chains ⓘ

There are no non-standard protein/DNA/RNA residues in this entry.

5.5 Carbohydrates ⓘ

There are no oligosaccharides in this entry.

5.6 Ligand geometry

4 ligands are modelled in this entry.

In the following table, the Counts columns list the number of bonds (or angles) for which Mogul statistics could be retrieved, the number of bonds (or angles) that are observed in the model and the number of bonds (or angles) that are defined in the Chemical Component Dictionary. The Link column lists molecule types, if any, to which the group is linked. The Z score for a bond length (or angle) is the number of standard deviations the observed value is removed from the expected value. A bond length (or angle) with $|Z| > 2$ is considered an outlier worth inspection. RMSZ is the root-mean-square of all Z scores of the bond lengths (or angles).

Mol	Type	Chain	Res	Link	Bond lengths			Bond angles		
					Counts	RMSZ	# $ Z > 2$	Counts	RMSZ	# $ Z > 2$
3	COA	A	801	-	32,33,50	0.79	1 (3%)	50,52,75	0.79	1 (2%)
4	B12	A	800	1	94,101,101	1.03	4 (4%)	149,166,166	1.68	35 (23%)
4	B12	C	800	1	94,101,101	1.02	5 (5%)	149,166,166	1.63	31 (20%)
3	COA	C	801	-	32,33,50	0.76	0	50,52,75	0.87	2 (4%)

In the following table, the Chirals column lists the number of chiral outliers, the number of chiral centers analysed, the number of these observed in the model and the number defined in the Chemical Component Dictionary. Similar counts are reported in the Torsion and Rings columns. '-' means no outliers of that kind were identified.

Mol	Type	Chain	Res	Link	Chirals	Torsions	Rings
3	COA	A	801	-	-	6/21/37/64	0/3/3/3
4	B12	A	800	1	-	9/56/223/223	0/3/11/11
4	B12	C	800	1	-	5/56/223/223	0/3/11/11
3	COA	C	801	-	-	6/21/37/64	0/3/3/3

The worst 5 of 10 bond length outliers are listed below:

Mol	Chain	Res	Type	Atoms	Z	Observed(Å)	Ideal(Å)
4	A	800	B12	C54-C17	2.98	1.59	1.54
4	C	800	B12	C54-C17	2.88	1.59	1.54
4	A	800	B12	C14-N23	2.78	1.38	1.35
4	A	800	B12	C46-C12	2.54	1.59	1.54
4	C	800	B12	C14-N23	2.46	1.38	1.35

The worst 5 of 69 bond angle outliers are listed below:

Mol	Chain	Res	Type	Atoms	Z	Observed(°)	Ideal(°)
4	C	800	B12	C7-C6-C5	-5.60	119.32	128.07

Continued on next page...

Continued from previous page...

Mol	Chain	Res	Type	Atoms	Z	Observed(°)	Ideal(°)
4	C	800	B12	C2-C1-C19	-4.46	111.68	118.61
4	A	800	B12	C7-C6-C5	-4.36	121.26	128.07
4	A	800	B12	O58-C57-C56	-3.92	114.92	122.02
4	C	800	B12	C55-C17-C16	3.77	123.97	116.59

There are no chirality outliers.

5 of 26 torsion outliers are listed below:

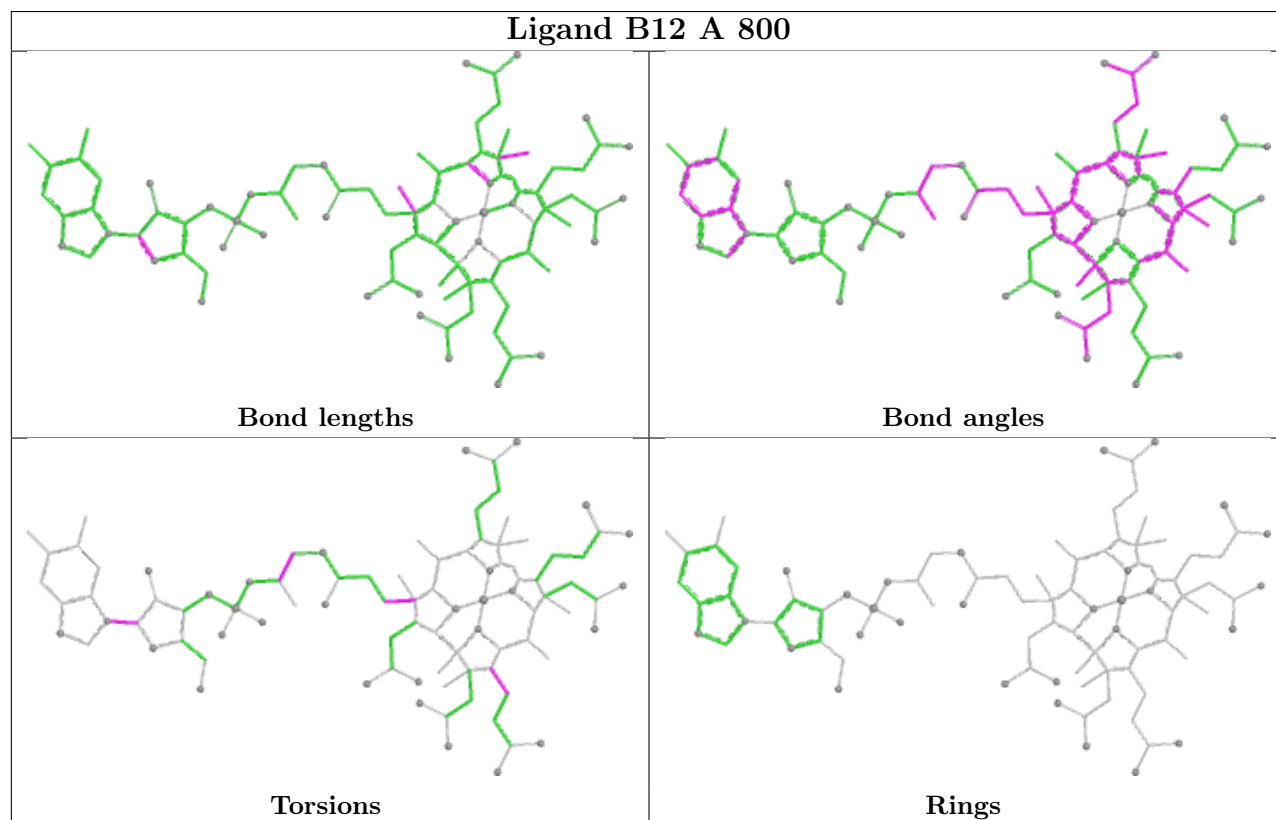
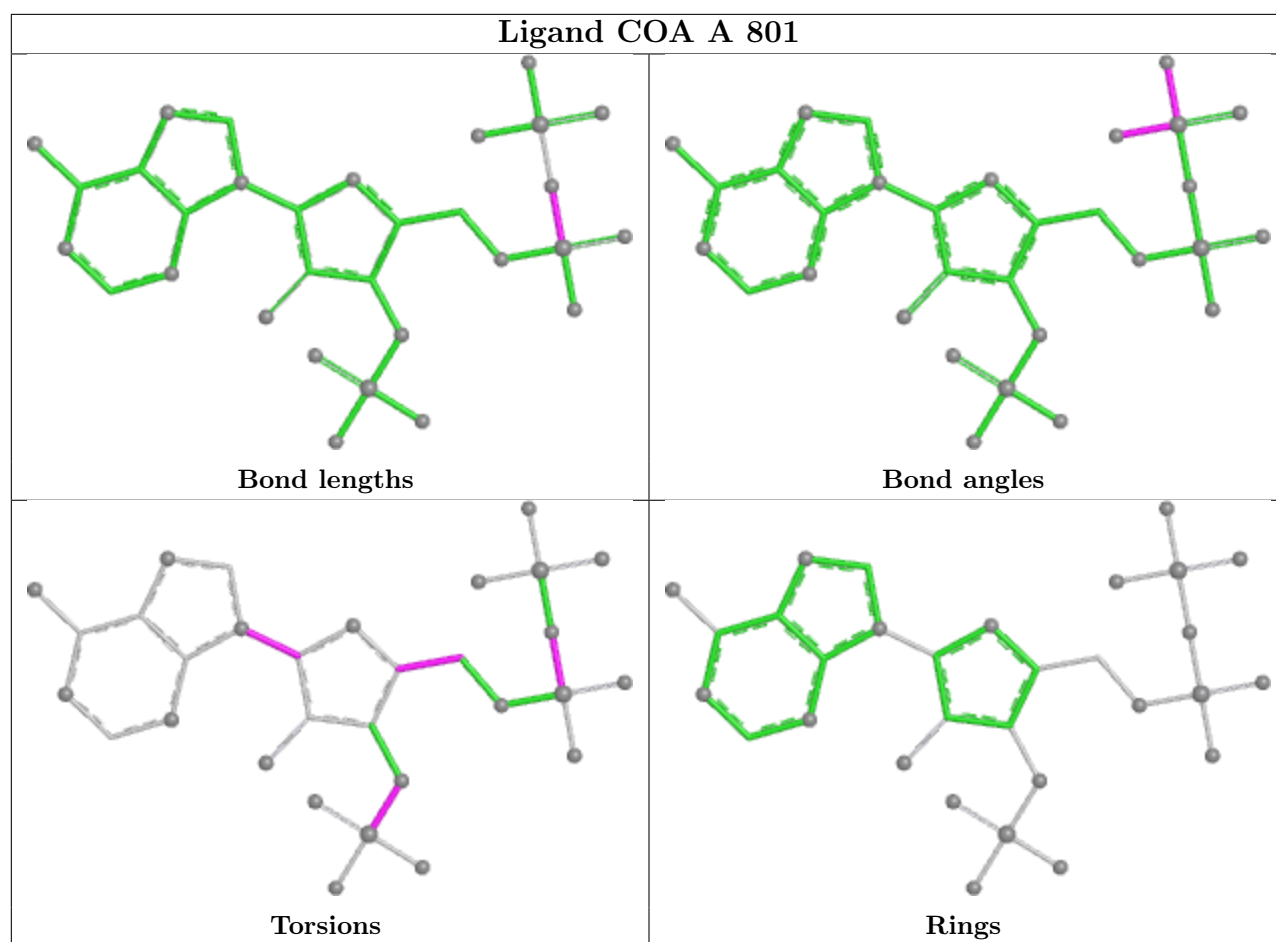
Mol	Chain	Res	Type	Atoms
4	A	800	B12	C16-C17-C55-C56
4	A	800	B12	C18-C17-C55-C56
4	A	800	B12	C2R-C1R-N1B-C2B
4	C	800	B12	C2R-C1R-N1B-C2B
3	A	801	COA	O4B-C4B-C5B-O5B

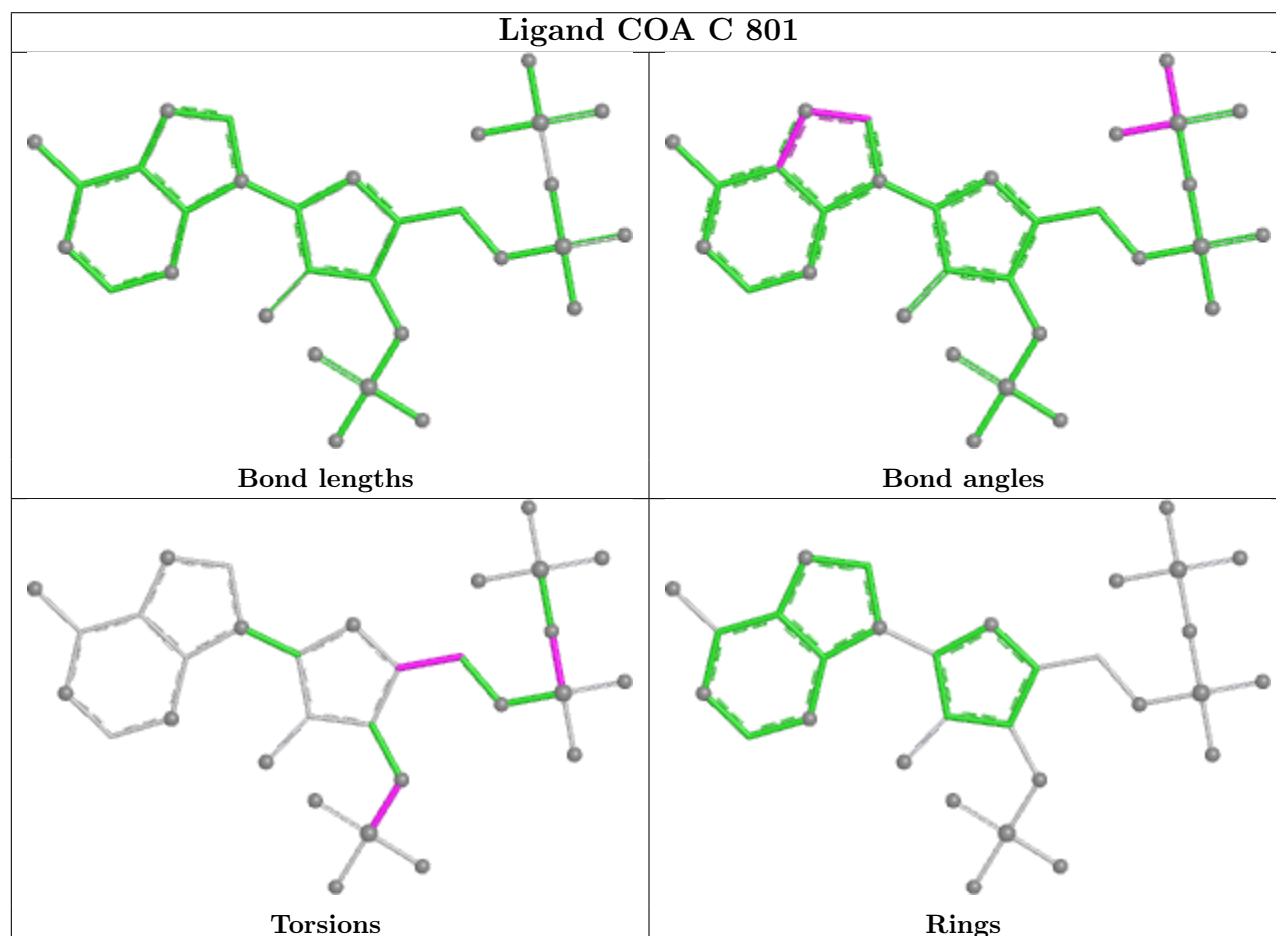
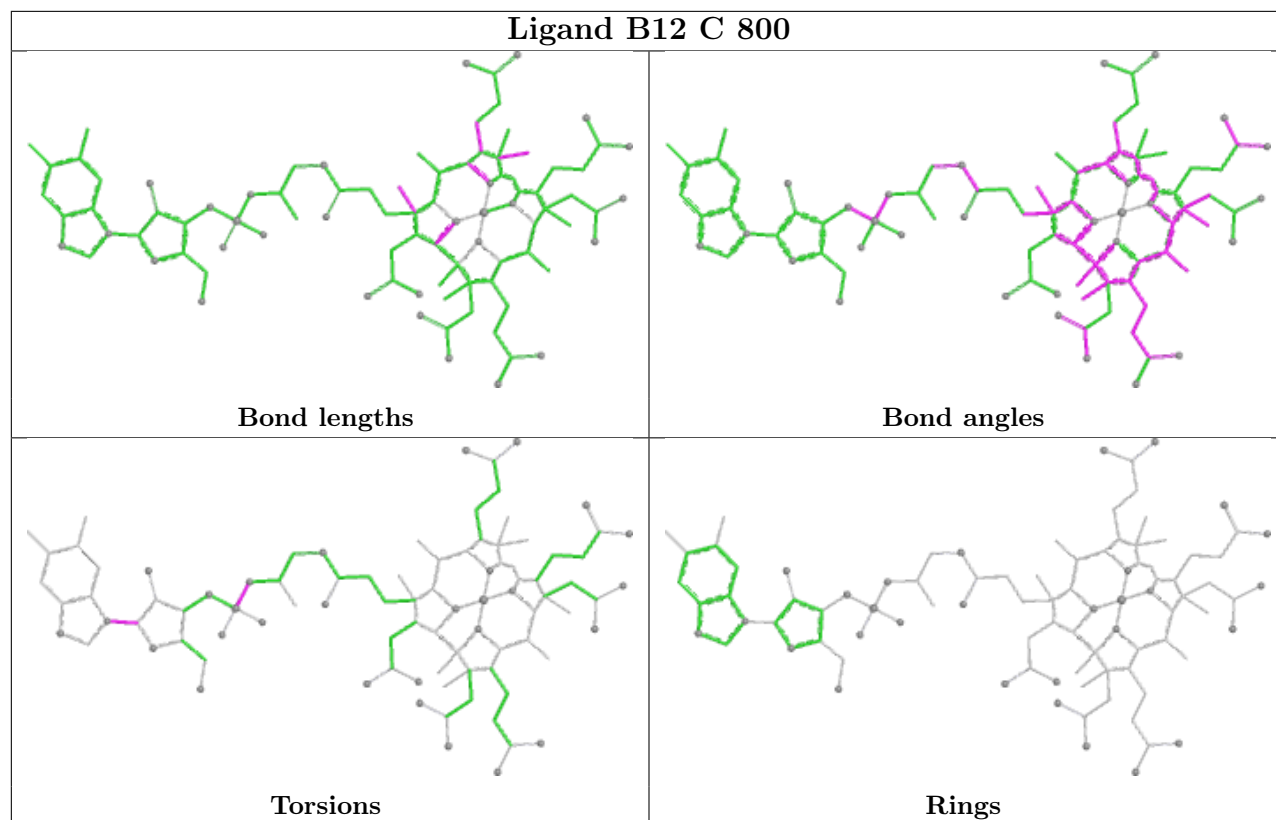
There are no ring outliers.

4 monomers are involved in 32 short contacts:

Mol	Chain	Res	Type	Clashes	Symm-Clashes
3	A	801	COA	1	0
4	A	800	B12	19	0
4	C	800	B12	11	0
3	C	801	COA	1	0

The following is a two-dimensional graphical depiction of Mogul quality analysis of bond lengths, bond angles, torsion angles, and ring geometry for all instances of the Ligand of Interest. In addition, ligands with molecular weight > 250 and outliers as shown on the validation Tables will also be included. For torsion angles, if less than 5% of the Mogul distribution of torsion angles is within 10 degrees of the torsion angle in question, then that torsion angle is considered an outlier. Any bond that is central to one or more torsion angles identified as an outlier by Mogul will be highlighted in the graph. For rings, the root-mean-square deviation (RMSD) between the ring in question and similar rings identified by Mogul is calculated over all ring torsion angles. If the average RMSD is greater than 60 degrees and the minimal RMSD between the ring in question and any Mogul-identified rings is also greater than 60 degrees, then that ring is considered an outlier. The outliers are highlighted in purple. The color gray indicates Mogul did not find sufficient equivalents in the CSD to analyse the geometry.





5.7 Other polymers [i](#)

There are no such residues in this entry.

5.8 Polymer linkage issues [i](#)

There are no chain breaks in this entry.

6 Fit of model and data [i](#)

6.1 Protein, DNA and RNA chains [i](#)

In the following table, the column labelled ‘#RSRZ> 2’ contains the number (and percentage) of RSRZ outliers, followed by percent RSRZ outliers for the chain as percentile scores relative to all X-ray entries and entries of similar resolution. The OWAB column contains the minimum, median, 95th percentile and maximum values of the occupancy-weighted average B-factor per residue. The column labelled ‘Q< 0.9’ lists the number of (and percentage) of residues with an average occupancy less than 0.9.

Mol	Chain	Analysed	<RSRZ>	#RSRZ>2	OWAB(Å ²)	Q<0.9
1	A	725/727 (99%)	0.07	17 (2%) 61 57	18, 35, 68, 125	0
1	C	725/727 (99%)	0.04	23 (3%) 50 46	14, 34, 68, 125	0
2	B	619/637 (97%)	0.60	48 (7%) 19 17	19, 51, 99, 129	0
2	D	619/637 (97%)	0.56	38 (6%) 27 23	19, 52, 99, 130	0
All	All	2688/2728 (98%)	0.30	126 (4%) 36 32	14, 42, 87, 130	0

The worst 5 of 126 RSRZ outliers are listed below:

Mol	Chain	Res	Type	RSRZ
2	B	518	LEU	5.0
1	C	476	PRO	4.5
1	A	480	VAL	4.5
1	C	93	SER	4.3
2	B	519	GLY	4.3

6.2 Non-standard residues in protein, DNA, RNA chains [i](#)

There are no non-standard protein/DNA/RNA residues in this entry.

6.3 Carbohydrates [i](#)

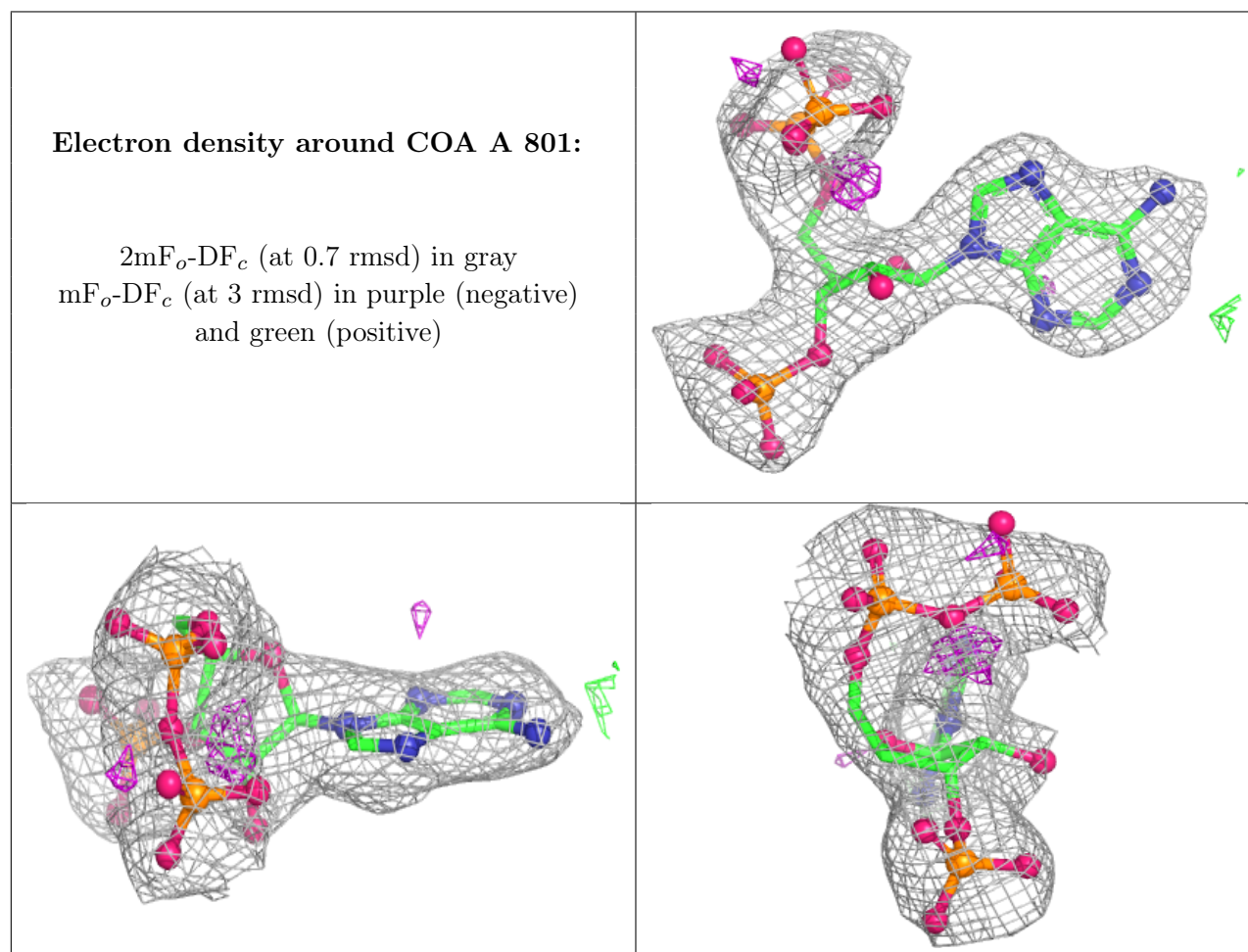
There are no oligosaccharides in this entry.

6.4 Ligands [i](#)

In the following table, the Atoms column lists the number of modelled atoms in the group and the number defined in the chemical component dictionary. The B-factors column lists the minimum, median, 95th percentile and maximum values of B factors of atoms in the group. The column labelled ‘Q< 0.9’ lists the number of atoms with occupancy less than 0.9.

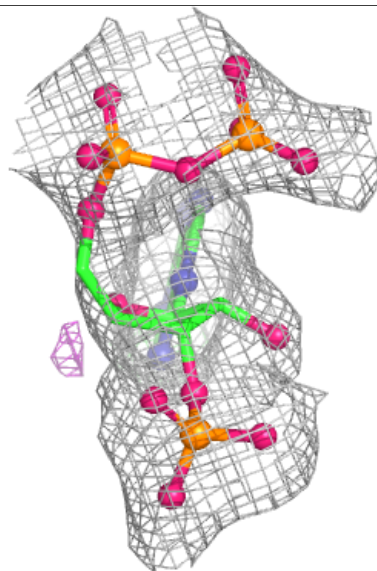
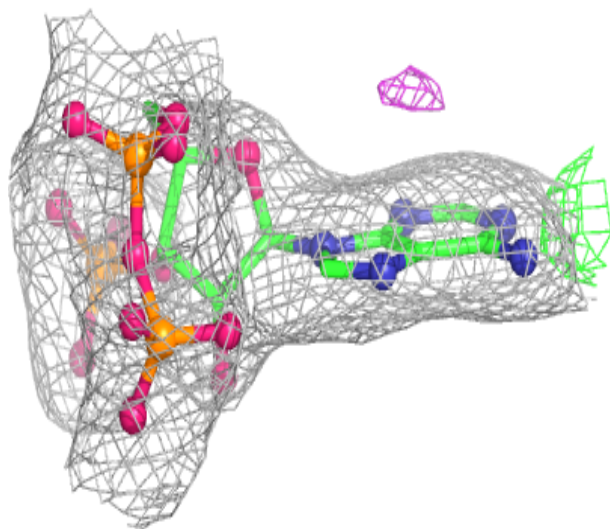
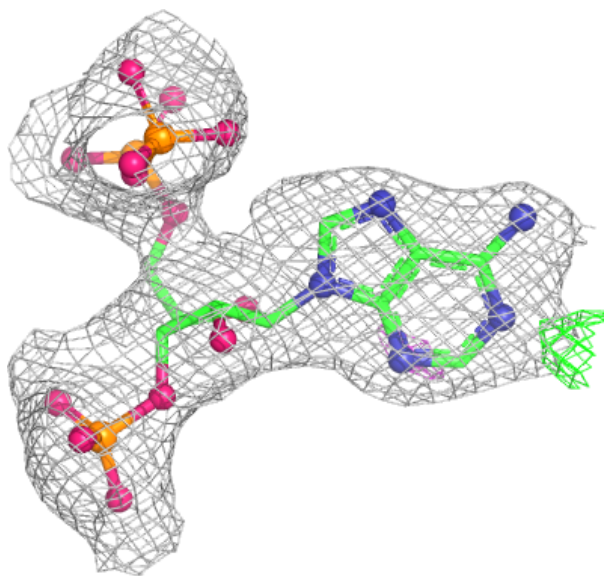
Mol	Type	Chain	Res	Atoms	RSCC	RSR	B-factors(\AA^2)	Q<0.9
3	COA	A	801	31/48	0.80	0.10	48,79,100,101	0
3	COA	C	801	31/48	0.82	0.11	43,77,100,101	0
4	B12	A	800	91/91	0.96	0.08	14,27,39,45	0
4	B12	C	800	91/91	0.98	0.07	9,22,33,41	0

The following is a graphical depiction of the model fit to experimental electron density of all instances of the Ligand of Interest. In addition, ligands with molecular weight > 250 and outliers as shown on the geometry validation Tables will also be included. Each fit is shown from different orientation to approximate a three-dimensional view.



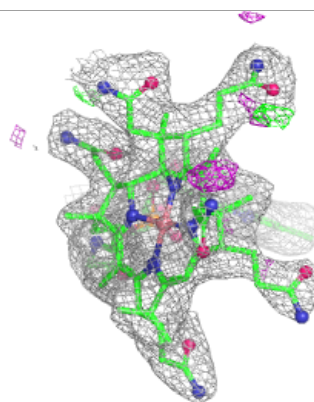
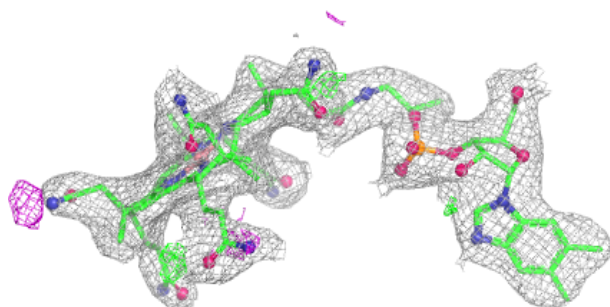
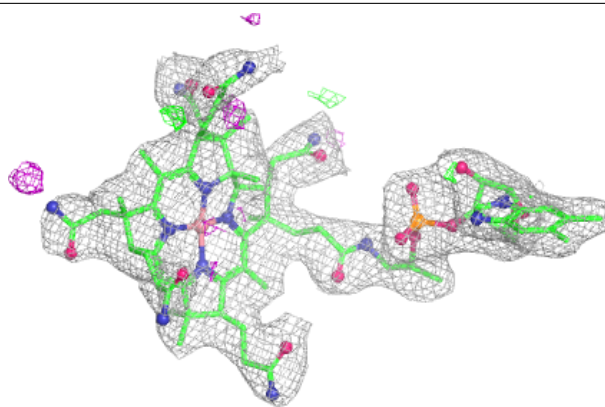
Electron density around COA C 801:

$2mF_o-DF_c$ (at 0.7 rmsd) in gray
 mF_o-DF_c (at 3 rmsd) in purple (negative)
and green (positive)

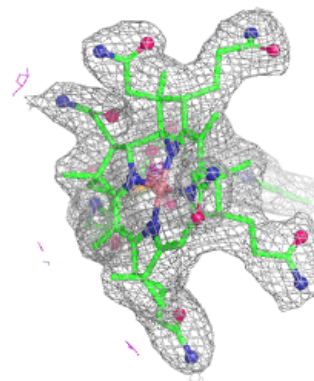
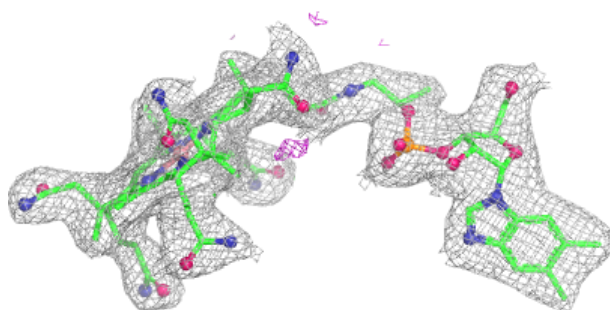
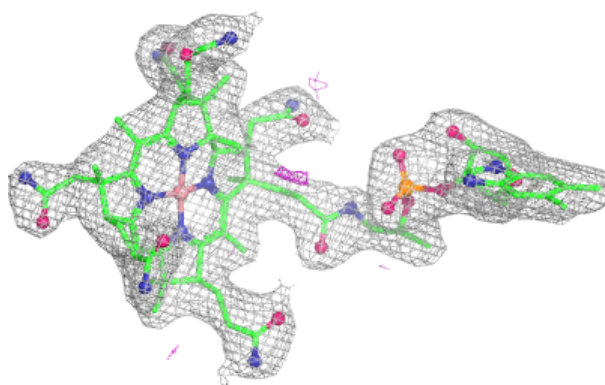


Electron density around B12 A 800:

$2mF_o-DF_c$ (at 0.7 rmsd) in gray
 mF_o-DF_c (at 3 rmsd) in purple (negative)
and green (positive)

**Electron density around B12 C 800:**

$2mF_o-DF_c$ (at 0.7 rmsd) in gray
 mF_o-DF_c (at 3 rmsd) in purple (negative)
and green (positive)



6.5 Other polymers [i](#)

There are no such residues in this entry.