



# wwPDB X-ray Structure Validation Summary Report ⓘ

Mar 8, 2026 – 01:47 PM UTC

PDB ID : 4PY2 / pdb\_00004py2  
Title : Crystal structure of methionyl-tRNA synthetase MetRS from Brucella melitensis in complex with inhibitor 1-{3-[(3,5-DICHLOROBENZYL)AMINO]PROPYL}-3-THIOPHEN-3-YLUREA  
Authors : Seattle Structural Genomics Center for Infectious Disease (SSGCID)  
Deposited on : 2014-03-25  
Resolution : 2.15 Å(reported)

This is a wwPDB X-ray Structure Validation Summary Report for a publicly released PDB entry.

We welcome your comments at [validation@mail.wwpdb.org](mailto:validation@mail.wwpdb.org)

A user guide is available at

<https://www.wwpdb.org/validation/2017/XrayValidationReportHelp>

with specific help available everywhere you see the ⓘ symbol.

The types of validation reports are described at

<http://www.wwpdb.org/validation/2017/FAQs#types>.

---

The following versions of software and data (see [references ⓘ](#)) were used in the production of this report:

MolProbity	:	4-5-2 with Phenix2.0
Mogul	:	NOT EXECUTED
Xtriage (Phenix)	:	2.0
EDS	:	NOT EXECUTED
Buster-report	:	NOT EXECUTED
Percentile statistics	:	20250101.v01 (using entries in the PDB archive January 1st 2025)
Ideal geometry (proteins)	:	Engh & Huber (2001)
Ideal geometry (DNA, RNA)	:	Parkinson et al. (1996)
Validation Pipeline (wwPDB-VP)	:	2.49

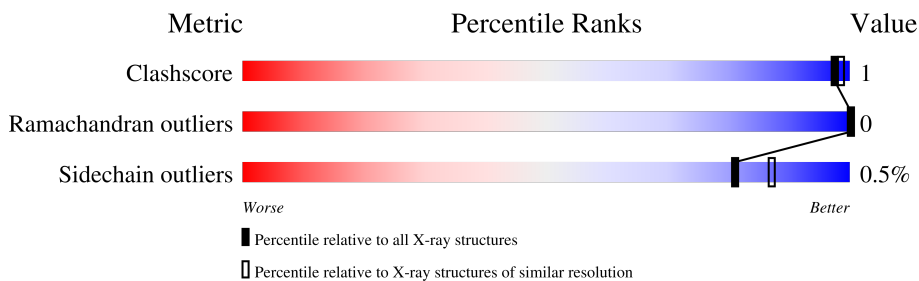
# 1 Overall quality at a glance

The following experimental techniques were used to determine the structure:

*X-RAY DIFFRACTION*

The reported resolution of this entry is 2.15 Å.

Percentile scores (ranging between 0-100) for global validation metrics of the entry are shown in the following graphic. The table shows the number of entries on which the scores are based.



Metric	Whole archive (#Entries)	Similar resolution (#Entries, resolution range(Å))
Clashscore	190562	2159 (2.16-2.16)
Ramachandran outliers	187476	2134 (2.16-2.16)
Sidechain outliers	187428	2133 (2.16-2.16)

The table below summarises the geometric issues observed across the polymeric chains and their fit to the electron density. The red, orange, yellow and green segments of the lower bar indicate the fraction of residues that contain outliers for  $\geq 3$ , 2, 1 and 0 types of geometric quality criteria respectively. A grey segment represents the fraction of residues that are not modelled. The numeric value for each fraction is indicated below the corresponding segment, with a dot representing fractions  $\leq 5\%$ .

Note EDS was not executed.

Mol	Chain	Length	Quality of chain
1	A	536	
1	B	536	
1	C	536	

## 2 Entry composition

There are 4 unique types of molecules in this entry. The entry contains 12210 atoms, of which 0 are hydrogens and 0 are deuteriums.

In the tables below, the ZeroOcc column contains the number of atoms modelled with zero occupancy, the AltConf column contains the number of residues with at least one atom in alternate conformation and the Trace column contains the number of residues modelled with at most 2 atoms.

- Molecule 1 is a protein called Methionine-tRNA ligase.

Mol	Chain	Residues	Atoms					ZeroOcc	AltConf	Trace
1	A	495	Total	C	N	O	S	0	3	0
			3859	2466	664	714	15			
1	B	487	Total	C	N	O	S	0	5	0
			3838	2450	661	712	15			
1	C	495	Total	C	N	O	S	0	3	0
			3868	2472	660	721	15			

There are 63 discrepancies between the modelled and reference sequences:

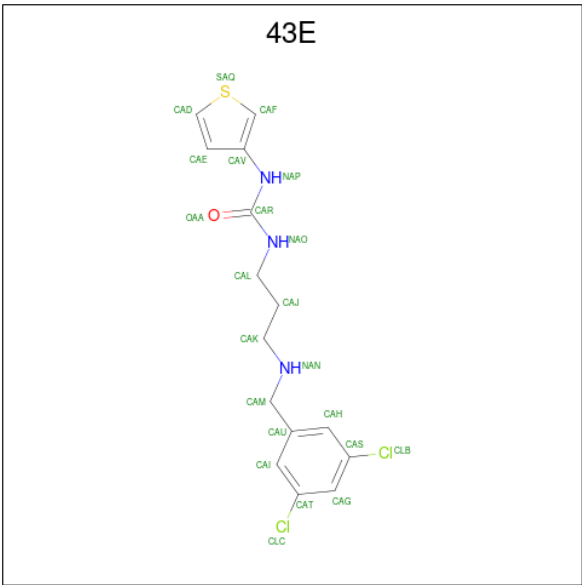
Chain	Residue	Modelled	Actual	Comment	Reference
A	-20	MET	-	expression tag	UNP Q2YQ76
A	-19	ALA	-	expression tag	UNP Q2YQ76
A	-18	HIS	-	expression tag	UNP Q2YQ76
A	-17	HIS	-	expression tag	UNP Q2YQ76
A	-16	HIS	-	expression tag	UNP Q2YQ76
A	-15	HIS	-	expression tag	UNP Q2YQ76
A	-14	HIS	-	expression tag	UNP Q2YQ76
A	-13	HIS	-	expression tag	UNP Q2YQ76
A	-12	MET	-	expression tag	UNP Q2YQ76
A	-11	GLY	-	expression tag	UNP Q2YQ76
A	-10	THR	-	expression tag	UNP Q2YQ76
A	-9	LEU	-	expression tag	UNP Q2YQ76
A	-8	GLU	-	expression tag	UNP Q2YQ76
A	-7	ALA	-	expression tag	UNP Q2YQ76
A	-6	GLN	-	expression tag	UNP Q2YQ76
A	-5	THR	-	expression tag	UNP Q2YQ76
A	-4	GLN	-	expression tag	UNP Q2YQ76
A	-3	GLY	-	expression tag	UNP Q2YQ76
A	-2	PRO	-	expression tag	UNP Q2YQ76
A	-1	GLY	-	expression tag	UNP Q2YQ76
A	0	SER	-	expression tag	UNP Q2YQ76
B	-20	MET	-	expression tag	UNP Q2YQ76
B	-19	ALA	-	expression tag	UNP Q2YQ76

*Continued on next page...*

*Continued from previous page...*

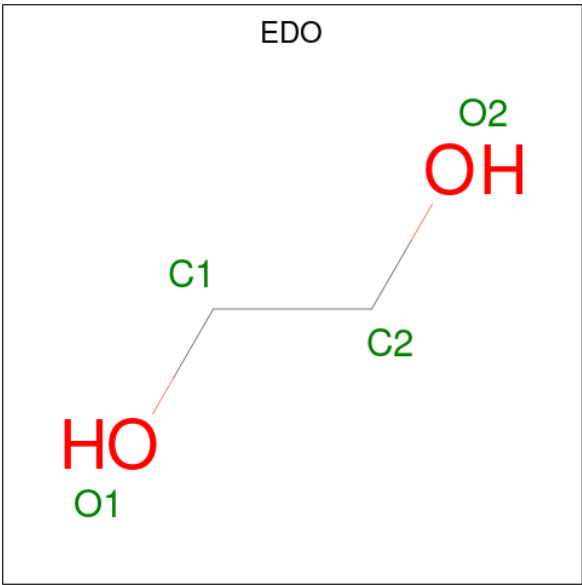
Chain	Residue	Modelled	Actual	Comment	Reference
B	-18	HIS	-	expression tag	UNP Q2YQ76
B	-17	HIS	-	expression tag	UNP Q2YQ76
B	-16	HIS	-	expression tag	UNP Q2YQ76
B	-15	HIS	-	expression tag	UNP Q2YQ76
B	-14	HIS	-	expression tag	UNP Q2YQ76
B	-13	HIS	-	expression tag	UNP Q2YQ76
B	-12	MET	-	expression tag	UNP Q2YQ76
B	-11	GLY	-	expression tag	UNP Q2YQ76
B	-10	THR	-	expression tag	UNP Q2YQ76
B	-9	LEU	-	expression tag	UNP Q2YQ76
B	-8	GLU	-	expression tag	UNP Q2YQ76
B	-7	ALA	-	expression tag	UNP Q2YQ76
B	-6	GLN	-	expression tag	UNP Q2YQ76
B	-5	THR	-	expression tag	UNP Q2YQ76
B	-4	GLN	-	expression tag	UNP Q2YQ76
B	-3	GLY	-	expression tag	UNP Q2YQ76
B	-2	PRO	-	expression tag	UNP Q2YQ76
B	-1	GLY	-	expression tag	UNP Q2YQ76
B	0	SER	-	expression tag	UNP Q2YQ76
C	-20	MET	-	expression tag	UNP Q2YQ76
C	-19	ALA	-	expression tag	UNP Q2YQ76
C	-18	HIS	-	expression tag	UNP Q2YQ76
C	-17	HIS	-	expression tag	UNP Q2YQ76
C	-16	HIS	-	expression tag	UNP Q2YQ76
C	-15	HIS	-	expression tag	UNP Q2YQ76
C	-14	HIS	-	expression tag	UNP Q2YQ76
C	-13	HIS	-	expression tag	UNP Q2YQ76
C	-12	MET	-	expression tag	UNP Q2YQ76
C	-11	GLY	-	expression tag	UNP Q2YQ76
C	-10	THR	-	expression tag	UNP Q2YQ76
C	-9	LEU	-	expression tag	UNP Q2YQ76
C	-8	GLU	-	expression tag	UNP Q2YQ76
C	-7	ALA	-	expression tag	UNP Q2YQ76
C	-6	GLN	-	expression tag	UNP Q2YQ76
C	-5	THR	-	expression tag	UNP Q2YQ76
C	-4	GLN	-	expression tag	UNP Q2YQ76
C	-3	GLY	-	expression tag	UNP Q2YQ76
C	-2	PRO	-	expression tag	UNP Q2YQ76
C	-1	GLY	-	expression tag	UNP Q2YQ76
C	0	SER	-	expression tag	UNP Q2YQ76

- Molecule 2 is 1-{3-[(3,5-dichlorobenzyl)amino]propyl}-3-thiophen-3-ylurea (CCD ID: 43E) (formula: C<sub>15</sub>H<sub>17</sub>Cl<sub>2</sub>N<sub>3</sub>OS).



Mol	Chain	Residues	Atoms					ZeroOcc	AltConf	
2	A	1	Total	C	Cl	N	O	S	0	0
			22	15	2	3	1	1		
2	B	1	Total	C	Cl	N	O	S	0	0
			22	15	2	3	1	1		
2	C	1	Total	C	Cl	N	O	S	0	0
			22	15	2	3	1	1		

- Molecule 3 is 1,2-ETHANEDIOL (CCD ID: EDO) (formula: C<sub>2</sub>H<sub>6</sub>O<sub>2</sub>).



Mol	Chain	Residues	Atoms			ZeroOcc	AltConf
3	A	1	Total	C	O	0	0
			4	2	2		

Continued on next page...

*Continued from previous page...*

Mol	Chain	Residues	Atoms	ZeroOcc	AltConf
3	B	1	Total C O 4 2 2	0	0
3	B	1	Total C O 4 2 2	0	0
3	B	1	Total C O 4 2 2	0	0
3	B	1	Total C O 4 2 2	0	0
3	C	1	Total C O 4 2 2	0	0
3	C	1	Total C O 4 2 2	0	0

- Molecule 4 is water.


Mol	Chain	Residues	Atoms	ZeroOcc	AltConf
4	A	174	Total O 174 174	0	0
4	B	238	Total O 239 239	0	1
4	C	136	Total O 138 138	0	2

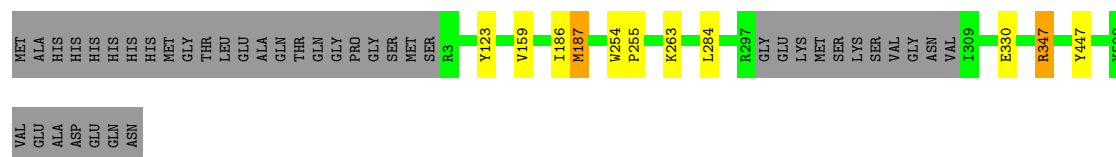
### 3 Residue-property plots [i](#)

These plots are drawn for all protein, RNA, DNA and oligosaccharide chains in the entry. The first graphic for a chain summarises the proportions of the various outlier classes displayed in the second graphic. The second graphic shows the sequence view annotated by issues in geometry. Residues are color-coded according to the number of geometric quality criteria for which they contain at least one outlier: green = 0, yellow = 1, orange = 2 and red = 3 or more. Stretches of 2 or more consecutive residues without any outlier are shown as a green connector. Residues present in the sample, but not in the model, are shown in grey.

Note EDS was not executed.

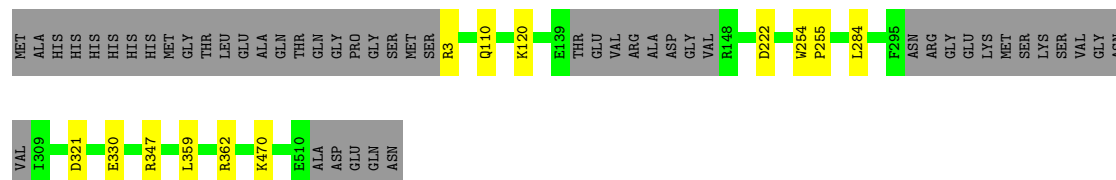
- Molecule 1: Methionine-tRNA ligase

Chain A:  90% 8%




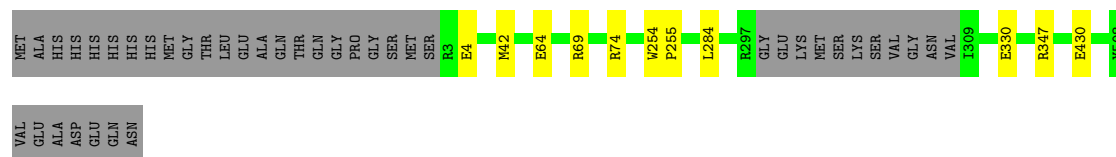
- Molecule 1: Methionine-tRNA ligase

Chain B:  88% 9%



- Molecule 1: Methionine-tRNA ligase

Chain C:  90% 8%



## 4 Data and refinement statistics

EDS was not executed - this section is therefore incomplete.

Property	Value	Source
Space group	P 1	Depositor
Cell constants a, b, c, $\alpha$ , $\beta$ , $\gamma$	45.01Å 99.48Å 104.00Å 110.47° 87.24° 99.99°	Depositor
Resolution (Å)	97.43 – 2.15	Depositor
% Data completeness (in resolution range)	98.3 (97.43-2.15)	Depositor
$R_{merge}$	0.07	Depositor
$R_{sym}$	(Not available)	Depositor
$\langle I/\sigma(I) \rangle$ <sup>1</sup>	2.58 (at 2.16Å)	Xtriage
Refinement program	REFMAC 5.8.0049	Depositor
R, $R_{free}$	0.178 , 0.211	Depositor
Wilson B-factor (Å <sup>2</sup> )	31.2	Xtriage
Anisotropy	0.207	Xtriage
L-test for twinning <sup>2</sup>	$\langle  L  \rangle = 0.49$ , $\langle L^2 \rangle = 0.32$	Xtriage
Estimated twinning fraction	No twinning to report.	Xtriage
Total number of atoms	12210	wwPDB-VP
Average B, all atoms (Å <sup>2</sup> )	36.0	wwPDB-VP

Xtriage's analysis on translational NCS is as follows: *The largest off-origin peak in the Patterson function is 4.14% of the height of the origin peak. No significant pseudotranslation is detected.*

<sup>1</sup>Intensities estimated from amplitudes.

<sup>2</sup>Theoretical values of  $\langle |L| \rangle$ ,  $\langle L^2 \rangle$  for acentric reflections are 0.5, 0.333 respectively for untwinned datasets, and 0.375, 0.2 for perfectly twinned datasets.



## 5 Model quality

### 5.1 Standard geometry

Bond lengths and bond angles in the following residue types are not validated in this section: 43E, EDO

The Z score for a bond length (or angle) is the number of standard deviations the observed value is removed from the expected value. A bond length (or angle) with  $|Z| > 5$  is considered an outlier worth inspection. RMSZ is the root-mean-square of all Z scores of the bond lengths (or angles).

Mol	Chain	Bond lengths		Bond angles	
		RMSZ	# Z  >5	RMSZ	# Z  >5
1	A	0.76	0/3966	0.85	3/5410 (0.1%)
1	B	0.81	0/3945	0.84	0/5373
1	C	0.73	0/3980	0.81	1/5426 (0.0%)
All	All	0.77	0/11891	0.83	4/16209 (0.0%)

There are no bond length outliers.

All (4) bond angle outliers are listed below:

Mol	Chain	Res	Type	Atoms	Z	Observed(°)	Ideal(°)
1	A	263	LYS	N-CA-CB	-6.80	99.75	110.22
1	A	123	TYR	N-CA-C	-5.38	99.74	108.41
1	A	187	MET	CG-SD-CE	5.11	112.14	100.90
1	C	430	GLU	CB-CA-C	-5.03	106.63	111.00

There are no chirality outliers.

There are no planarity outliers.

### 5.2 Too-close contacts

In the following table, the Non-H and H(model) columns list the number of non-hydrogen atoms and hydrogen atoms in the chain respectively. The H(added) column lists the number of hydrogen atoms added and optimized by MolProbity. The Clashes column lists the number of clashes within the asymmetric unit, whereas Symm-Clashes lists symmetry-related clashes.

Mol	Chain	Non-H	H(model)	H(added)	Clashes	Symm-Clashes
1	A	3859	0	3638	5	0
1	B	3838	0	3635	8	0
1	C	3868	0	3665	5	0
2	A	22	0	17	0	0

*Continued on next page...*

*Continued from previous page...*

Mol	Chain	Non-H	H(model)	H(added)	Clashes	Symm-Clashes
2	B	22	0	17	0	0
2	C	22	0	17	0	0
3	A	4	0	6	0	0
3	B	16	0	24	2	0
3	C	8	0	12	1	0
4	A	174	0	0	0	0
4	B	239	0	0	2	0
4	C	138	0	0	0	0
All	All	12210	0	11031	19	0

The all-atom clashscore is defined as the number of clashes found per 1000 atoms (including hydrogen atoms). The all-atom clashscore for this structure is 1.

The worst 5 of 19 close contacts within the same asymmetric unit are listed below, sorted by their clash magnitude.

Atom-1	Atom-2	Interatomic distance (Å)	Clash overlap (Å)
1:B:254:TRP:CD2	1:B:255:PRO:HA	2.32	0.65
1:B:330:GLU:OE2	1:B:347[A]:ARG:NE	2.30	0.65
1:B:110[A]:GLN:NE2	4:B:713:HOH:O	2.29	0.64
1:A:254:TRP:CD2	1:A:255:PRO:HA	2.33	0.63
1:C:254:TRP:CD2	1:C:255:PRO:HA	2.33	0.63

There are no symmetry-related clashes.

## 5.3 Torsion angles [i](#)

### 5.3.1 Protein backbone [i](#)

In the following table, the Percentiles column shows the percent Ramachandran outliers of the chain as a percentile score with respect to all X-ray entries followed by that with respect to entries of similar resolution.

The Analysed column shows the number of residues for which the backbone conformation was analysed, and the total number of residues.

Mol	Chain	Analysed	Favoured	Allowed	Outliers	Percentiles	
1	A	494/536 (92%)	488 (99%)	6 (1%)	0	100	100
1	B	486/536 (91%)	479 (99%)	7 (1%)	0	100	100
1	C	494/536 (92%)	487 (99%)	7 (1%)	0	100	100

*Continued on next page...*

*Continued from previous page...*

Mol	Chain	Analysed	Favoured	Allowed	Outliers	Percentiles	
All	All	1474/1608 (92%)	1454 (99%)	20 (1%)	0	100	100

There are no Ramachandran outliers to report.

### 5.3.2 Protein sidechains ⓘ

In the following table, the Percentiles column shows the percent sidechain outliers of the chain as a percentile score with respect to all X-ray entries followed by that with respect to entries of similar resolution.

The Analysed column shows the number of residues for which the sidechain conformation was analysed, and the total number of residues.

Mol	Chain	Analysed	Rotameric	Outliers	Percentiles	
1	A	380/437 (87%)	377 (99%)	3 (1%)	73	79
1	B	381/437 (87%)	379 (100%)	2 (0%)	81	87
1	C	385/437 (88%)	384 (100%)	1 (0%)	86	91
All	All	1146/1311 (87%)	1140 (100%)	6 (0%)	81	87

5 of 6 residues with a non-rotameric sidechain are listed below:

Mol	Chain	Res	Type
1	B	284	LEU
1	B	470	LYS
1	C	284	LEU
1	A	284	LEU
1	A	159	VAL

Sometimes sidechains can be flipped to improve hydrogen bonding and reduce clashes. All (3) such sidechains are listed below:

Mol	Chain	Res	Type
1	B	115	ASN
1	B	370	ASN
1	C	115	ASN

### 5.3.3 RNA ⓘ

There are no RNA molecules in this entry.

## 5.4 Non-standard residues in protein, DNA, RNA chains [i](#)

Mogul was not executed - this section is therefore empty.

## 5.5 Carbohydrates [i](#)

Mogul was not executed - this section is therefore empty.

## 5.6 Ligand geometry [i](#)

Mogul was not executed - this section is therefore empty.

## 5.7 Other polymers [i](#)

Mogul was not executed - this section is therefore empty.

## 5.8 Polymer linkage issues [i](#)

There are no chain breaks in this entry.

## 6 Fit of model and data [i](#)

### 6.1 Protein, DNA and RNA chains [i](#)

EDS was not executed - this section is therefore empty.

### 6.2 Non-standard residues in protein, DNA, RNA chains [i](#)

EDS was not executed - this section is therefore empty.

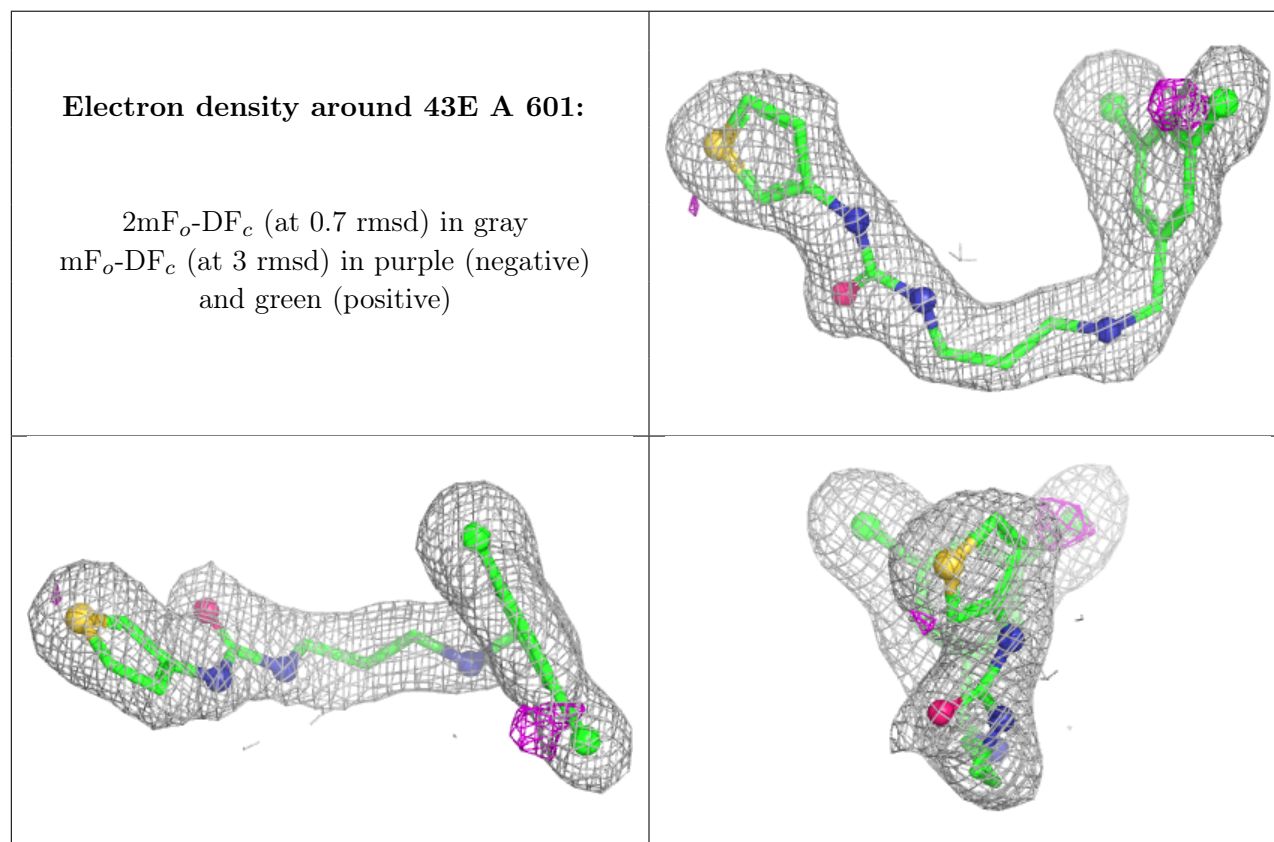
### 6.3 Carbohydrates [i](#)

EDS was not executed - this section is therefore empty.

### 6.4 Ligands [i](#)

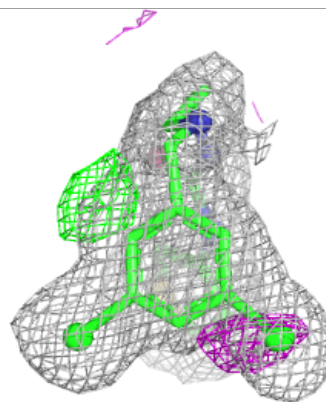
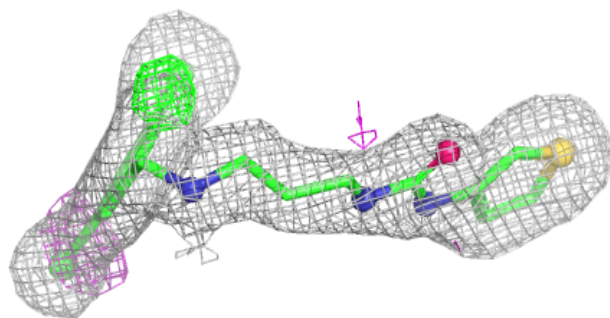
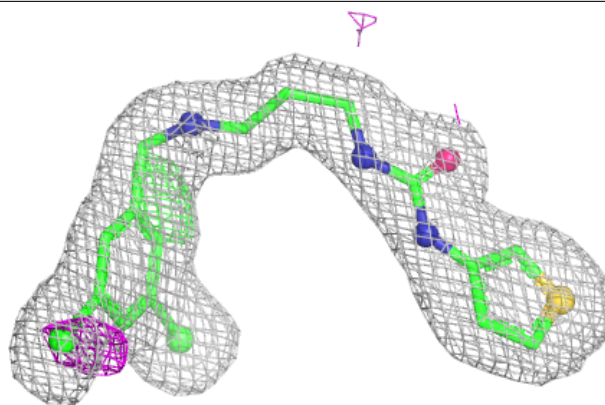
EDS was not executed - this section is therefore empty.

The following is a graphical depiction of the model fit to experimental electron density of all instances of the Ligand of Interest. In addition, ligands with molecular weight > 250 and outliers as shown on the geometry validation Tables will also be included. Each fit is shown from different orientation to approximate a three-dimensional view.

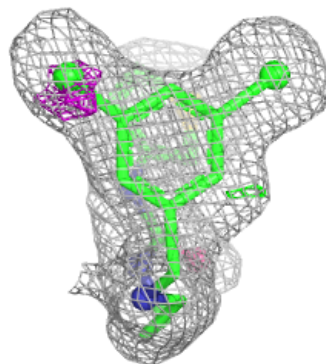
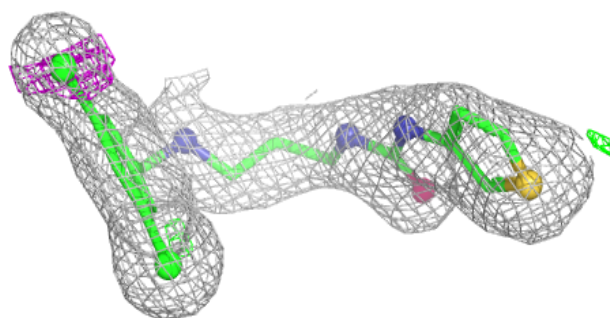
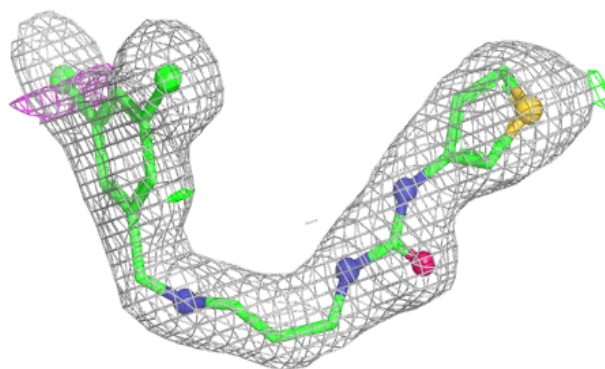


**Electron density around 43E B 601:**

$2mF_o-DF_c$  (at 0.7 rmsd) in gray  
 $mF_o-DF_c$  (at 3 rmsd) in purple (negative)  
and green (positive)

**Electron density around 43E C 601:**

$2mF_o-DF_c$  (at 0.7 rmsd) in gray  
 $mF_o-DF_c$  (at 3 rmsd) in purple (negative)  
and green (positive)



## 6.5 Other polymers

EDS was not executed - this section is therefore empty.