



Full wwPDB X-ray Structure Validation Report ⓘ

Feb 28, 2026 – 08:50 PM UTC

PDB ID : 5NMO / pdb_00005nmo
Title : Structure of the Bacillus subtilis Smc Joint domain
Authors : Diebold-Durand, M.-L.; Basquin, J.; Gruber, S.
Deposited on : 2017-04-06
Resolution : 1.90 Å(reported)

This is a Full wwPDB X-ray Structure Validation Report for a publicly released PDB entry.

We welcome your comments at validation@mail.wwpdb.org

A user guide is available at

<https://www.wwpdb.org/validation/2017/XrayValidationReportHelp>

with specific help available everywhere you see the ⓘ symbol.

The types of validation reports are described at

<http://www.wwpdb.org/validation/2017/FAQs#types>.

The following versions of software and data (see [references ⓘ](#)) were used in the production of this report:

MolProbity	:	4-5-2 with Phenix2.0
Mogul	:	2022.3.0, CSD as543be (2022)
Xtriage (Phenix)	:	2.0
EDS	:	3.0
Percentile statistics	:	20250101.v01 (using entries in the PDB archive January 1st 2025)
CCP4	:	9.0.010 (Gargrove)
Density-Fitness	:	1.0.12
Ideal geometry (proteins)	:	Engh & Huber (2001)
Ideal geometry (DNA, RNA)	:	Parkinson et al. (1996)
Validation Pipeline (wwPDB-VP)	:	2.49

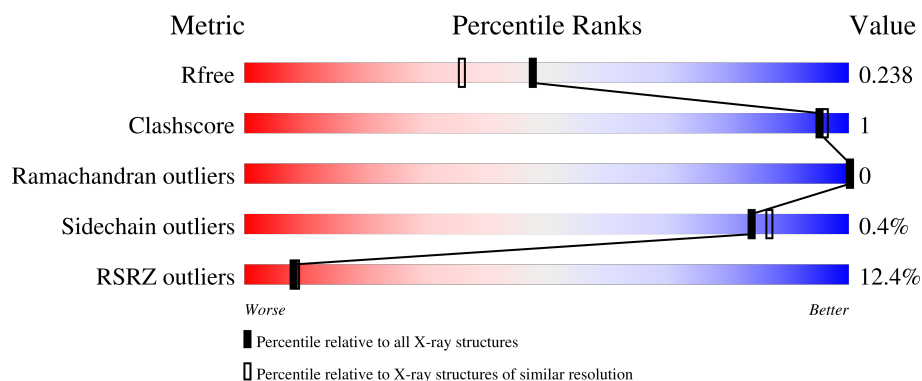
1 Overall quality at a glance

The following experimental techniques were used to determine the structure:

X-RAY DIFFRACTION

The reported resolution of this entry is 1.90 Å.

Percentile scores (ranging between 0-100) for global validation metrics of the entry are shown in the following graphic. The table shows the number of entries on which the scores are based.



Metric	Whole archive (#Entries)	Similar resolution (#Entries, resolution range(Å))
R_{free}	180053	7789 (1.90-1.90)
Clashscore	190562	8410 (1.90-1.90)
Ramachandran outliers	187476	8333 (1.90-1.90)
Sidechain outliers	187428	8333 (1.90-1.90)
RSRZ outliers	180081	7790 (1.90-1.90)

The table below summarises the geometric issues observed across the polymeric chains and their fit to the electron density. The red, orange, yellow and green segments of the lower bar indicate the fraction of residues that contain outliers for ≥ 3 , 2, 1 and 0 types of geometric quality criteria respectively. A grey segment represents the fraction of residues that are not modelled. The numeric value for each fraction is indicated below the corresponding segment, with a dot representing fractions $\leq 5\%$. The upper red bar (where present) indicates the fraction of residues that have poor fit to the electron density. The numeric value is given above the bar.

Mol	Chain	Length	Quality of chain
1	A	167	<div> <div>11%</div> <div>96%</div> <div>..</div> </div>
1	B	167	<div> <div>11%</div> <div>77%</div> <div>. 19%</div> </div>

2 Entry composition

There are 6 unique types of molecules in this entry. The entry contains 5084 atoms, of which 2481 are hydrogens and 0 are deuteriums.

In the tables below, the ZeroOcc column contains the number of atoms modelled with zero occupancy, the AltConf column contains the number of residues with at least one atom in alternate conformation and the Trace column contains the number of residues modelled with at most 2 atoms.

- Molecule 1 is a protein called Chromosome partition protein Smc,Chromosome partition protein Smc.

Mol	Chain	Residues	Atoms						ZeroOcc	AltConf	Trace
1	A	162	Total	C	H	N	O	S	0	2	0
			2644	835	1319	220	268	2			
1	B	136	Total	C	H	N	O	S	0	1	0
			2117	675	1052	172	216	2			

There are 22 discrepancies between the modelled and reference sequences:

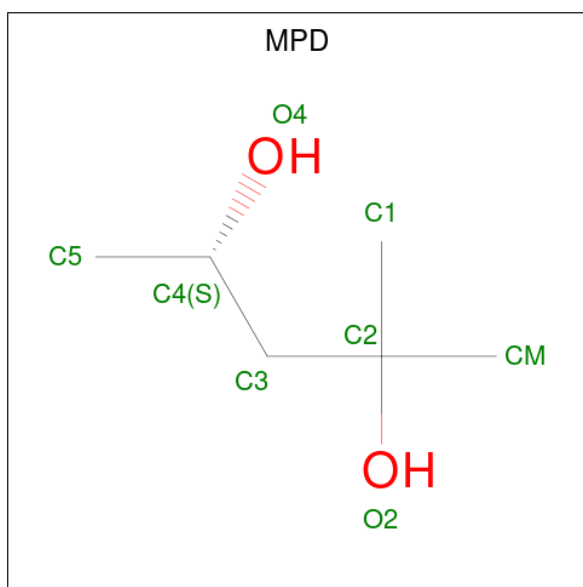
Chain	Residue	Modelled	Actual	Comment	Reference
A	184	GLY	-	expression tag	UNP P51834
A	185	SER	-	expression tag	UNP P51834
A	186	GLY	-	expression tag	UNP P51834
A	187	MET	-	expression tag	UNP P51834
A	254	SER	-	linker	UNP P51834
A	916	GLY	-	linker	UNP P51834
A	917	GLY	-	linker	UNP P51834
A	918	SER	-	linker	UNP P51834
A	919	GLY	-	linker	UNP P51834
A	920	GLY	-	linker	UNP P51834
A	921	SER	-	linker	UNP P51834
B	184	GLY	-	expression tag	UNP P51834
B	185	SER	-	expression tag	UNP P51834
B	186	GLY	-	expression tag	UNP P51834
B	187	MET	-	expression tag	UNP P51834
B	254	SER	-	linker	UNP P51834
B	255	GLY	-	linker	UNP P51834
B	256	GLY	-	linker	UNP P51834
B	257	SER	-	linker	UNP P51834
B	919	GLY	-	linker	UNP P51834
B	920	GLY	-	linker	UNP P51834
B	921	SER	-	linker	UNP P51834

- Molecule 2 is SULFATE ION (CCD ID: SO4) (formula: O₄S).



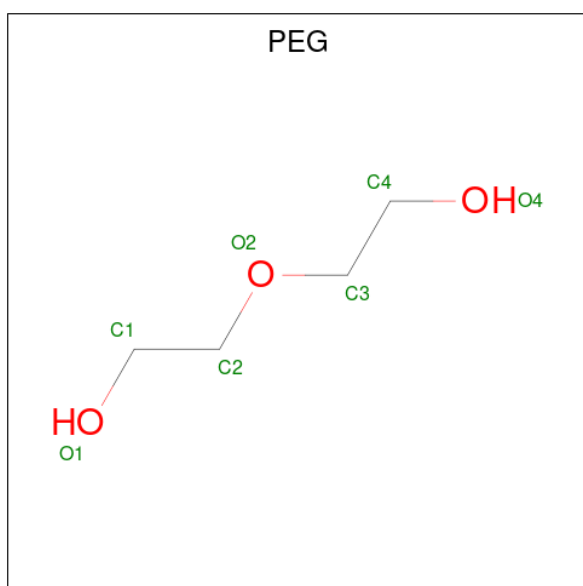
Mol	Chain	Residues	Atoms			ZeroOcc	AltConf
2	A	1	Total	O	S	0	0
			5	4	1		
2	A	1	Total	O	S	0	0
			5	4	1		
2	A	1	Total	O	S	0	0
			5	4	1		
2	A	1	Total	O	S	0	0
			5	4	1		
2	A	1	Total	O	S	0	0
			5	4	1		
2	B	1	Total	O	S	0	0
			5	4	1		
2	B	1	Total	O	S	0	0
			5	4	1		
2	B	1	Total	O	S	0	0
			5	4	1		

- Molecule 3 is (4S)-2-METHYL-2,4-PENTANEDIOL (CCD ID: MPD) (formula: C₆H₁₄O₂).



Mol	Chain	Residues	Atoms				ZeroOcc	AltConf
3	A	1	Total	C	H	O	0	0
			22	6	14	2		
3	B	1	Total	C	H	O	0	0
			22	6	14	2		

- Molecule 4 is DI(HYDROXYETHYL)ETHER (CCD ID: PEG) (formula: $C_4H_{10}O_3$).



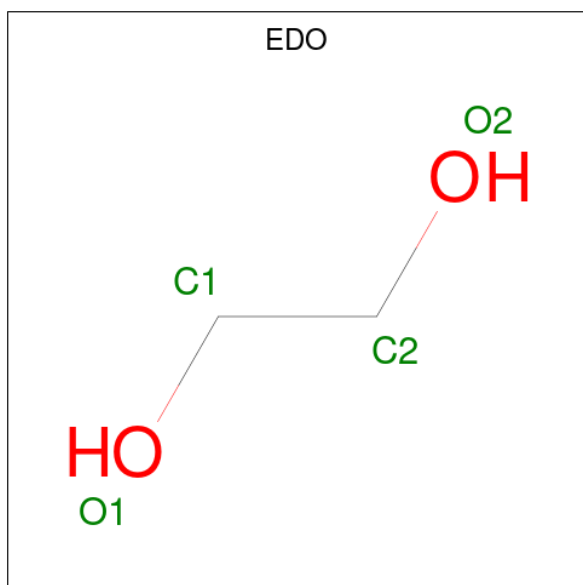
Mol	Chain	Residues	Atoms				ZeroOcc	AltConf
4	A	1	Total	C	H	O	0	0
			17	4	10	3		
4	A	1	Total	C	H	O	0	0
			17	4	10	3		

Continued on next page...

Continued from previous page...

Mol	Chain	Residues	Atoms				ZeroOcc	AltConf
4	B	1	Total	C	H	O	0	0
			17	4	10	3		
4	B	1	Total	C	H	O	0	0
			17	4	10	3		

- Molecule 5 is 1,2-ETHANEDIOL (CCD ID: EDO) (formula: C₂H₆O₂).



Mol	Chain	Residues	Atoms				ZeroOcc	AltConf
5	A	1	Total	C	H	O	0	0
			10	2	6	2		
5	A	1	Total	C	H	O	0	0
			10	2	6	2		
5	A	1	Total	C	H	O	0	0
			10	2	6	2		
5	A	1	Total	C	H	O	0	0
			10	2	6	2		
5	B	1	Total	C	H	O	0	0
			10	2	6	2		
5	B	1	Total	C	H	O	0	0
			10	2	6	2		
5	B	1	Total	C	H	O	0	0
			10	2	6	2		

- Molecule 6 is water.

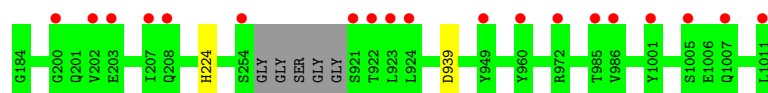
Mol	Chain	Residues	Atoms		ZeroOcc	AltConf
6	A	48	Total 48	O 48	0	0
6	B	43	Total 43	O 43	0	0

3 Residue-property plots [i](#)


These plots are drawn for all protein, RNA, DNA and oligosaccharide chains in the entry. The first graphic for a chain summarises the proportions of the various outlier classes displayed in the second graphic. The second graphic shows the sequence view annotated by issues in geometry and electron density. Residues are color-coded according to the number of geometric quality criteria for which they contain at least one outlier: green = 0, yellow = 1, orange = 2 and red = 3 or more. A red dot above a residue indicates a poor fit to the electron density ($RSRZ > 2$). Stretches of 2 or more consecutive residues without any outlier are shown as a green connector. Residues present in the sample, but not in the model, are shown in grey.

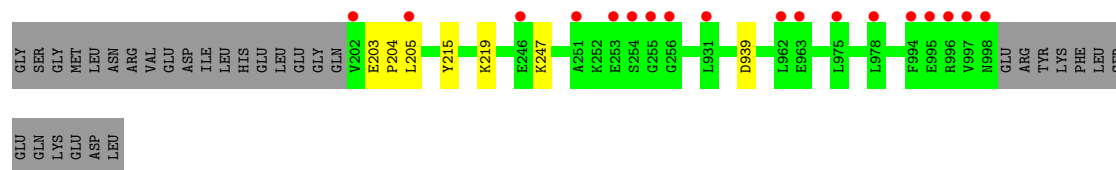
- Molecule 1: Chromosome partition protein Smc,Chromosome partition protein Smc

Chain A: 



- Molecule 1: Chromosome partition protein Smc,Chromosome partition protein Smc

Chain B: 



4 Data and refinement statistics

Property	Value	Source
Space group	P 21 21 2	Depositor
Cell constants a, b, c, α , β , γ	78.04Å 83.86Å 64.83Å 90.00° 90.00° 90.00°	Depositor
Resolution (Å)	51.29 – 1.90 51.29 – 1.90	Depositor EDS
% Data completeness (in resolution range)	99.7 (51.29-1.90) 99.7 (51.29-1.90)	Depositor EDS
R_{merge}	0.04	Depositor
R_{sym}	(Not available)	Depositor
$\langle I/\sigma(I) \rangle$ ¹	1.23 (at 1.90Å)	Xtriage
Refinement program	PHENIX 1.9_1692	Depositor
R, R_{free}	0.191 , 0.228 0.213 , 0.238	Depositor DCC
R_{free} test set	1714 reflections (5.00%)	wwPDB-VP
Wilson B-factor (Å ²)	41.2	Xtriage
Anisotropy	0.294	Xtriage
Bulk solvent k_{sol} (e/Å ³), B_{sol} (Å ²)	0.41 , 53.6	EDS
L-test for twinning ²	$\langle L \rangle = 0.49$, $\langle L^2 \rangle = 0.32$	Xtriage
Estimated twinning fraction	No twinning to report.	Xtriage
F_o, F_c correlation	0.96	EDS
Total number of atoms	5084	wwPDB-VP
Average B, all atoms (Å ²)	68.0	wwPDB-VP

Xtriage's analysis on translational NCS is as follows: *The largest off-origin peak in the Patterson function is 7.97% of the height of the origin peak. No significant pseudotranslation is detected.*

¹Intensities estimated from amplitudes.

²Theoretical values of $\langle |L| \rangle$, $\langle L^2 \rangle$ for acentric reflections are 0.5, 0.333 respectively for untwinned datasets, and 0.375, 0.2 for perfectly twinned datasets.

5 Model quality [i](#)

5.1 Standard geometry [i](#)

Bond lengths and bond angles in the following residue types are not validated in this section: MPD, SO4, PEG, EDO

The Z score for a bond length (or angle) is the number of standard deviations the observed value is removed from the expected value. A bond length (or angle) with $|Z| > 5$ is considered an outlier worth inspection. RMSZ is the root-mean-square of all Z scores of the bond lengths (or angles).

Mol	Chain	Bond lengths		Bond angles	
		RMSZ	# Z >5	RMSZ	# Z >5
1	A	0.31	0/1346	0.60	0/1804
1	B	0.37	0/1084	0.64	0/1456
All	All	0.34	0/2430	0.62	0/3260

There are no bond length outliers.

There are no bond angle outliers.

There are no chirality outliers.

There are no planarity outliers.

5.2 Too-close contacts [i](#)

In the following table, the Non-H and H(model) columns list the number of non-hydrogen atoms and hydrogen atoms in the chain respectively. The H(added) column lists the number of hydrogen atoms added and optimized by MolProbity. The Clashes column lists the number of clashes within the asymmetric unit, whereas Symm-Clashes lists symmetry-related clashes.

Mol	Chain	Non-H	H(model)	H(added)	Clashes	Symm-Clashes
1	A	1325	1319	1309	2	0
1	B	1065	1052	1049	4	0
2	A	35	0	0	1	0
2	B	15	0	0	0	0
3	A	8	14	14	1	0
3	B	8	14	14	1	0
4	A	14	20	20	0	0
4	B	14	20	20	1	0
5	A	16	24	24	0	0
5	B	12	18	18	0	0
6	A	48	0	0	0	0

Continued on next page...

Continued from previous page...

Mol	Chain	Non-H	H(model)	H(added)	Clashes	Symm-Clashes
6	B	43	0	0	0	1
All	All	2603	2481	2468	6	1

The all-atom clashscore is defined as the number of clashes found per 1000 atoms (including hydrogen atoms). The all-atom clashscore for this structure is 1.

All (6) close contacts within the same asymmetric unit are listed below, sorted by their clash magnitude.

Atom-1	Atom-2	Interatomic distance (Å)	Clash overlap (Å)
1:B:247:LYS:NZ	4:B:1106:PEG:O4	2.19	0.74
1:B:939:ASP:CG	3:B:1104:MPD:H13	2.38	0.49
1:B:215:TYR:CZ	1:B:219:LYS:HD2	2.50	0.47
1:B:203:GLU:N	1:B:204:PRO:CD	2.82	0.43
1:A:939:ASP:OD1	3:A:1108:MPD:O4	2.36	0.42
1:A:224:HIS:NE2	2:A:1103:SO4:O4	2.47	0.41

All (1) symmetry-related close contacts are listed below. The label for Atom-2 includes the symmetry operator and encoded unit-cell translations to be applied.

Atom-1	Atom-2	Interatomic distance (Å)	Clash overlap (Å)
6:B:1233:HOH:O	6:B:1236:HOH:O[2_565]	2.15	0.05

5.3 Torsion angles [i](#)

5.3.1 Protein backbone [i](#)

In the following table, the Percentiles column shows the percent Ramachandran outliers of the chain as a percentile score with respect to all X-ray entries followed by that with respect to entries of similar resolution.

The Analysed column shows the number of residues for which the backbone conformation was analysed, and the total number of residues.

Mol	Chain	Analysed	Favoured	Allowed	Outliers	Percentiles	
1	A	160/167 (96%)	159 (99%)	1 (1%)	0	100	100
1	B	135/167 (81%)	135 (100%)	0	0	100	100
All	All	295/334 (88%)	294 (100%)	1 (0%)	0	100	100

There are no Ramachandran outliers to report.

5.3.2 Protein sidechains [i](#)

In the following table, the Percentiles column shows the percent sidechain outliers of the chain as a percentile score with respect to all X-ray entries followed by that with respect to entries of similar resolution.

The Analysed column shows the number of residues for which the sidechain conformation was analysed, and the total number of residues.

Mol	Chain	Analysed	Rotameric	Outliers	Percentiles	
1	A	144/147 (98%)	144 (100%)	0	100	100
1	B	113/147 (77%)	112 (99%)	1 (1%)	70	73
All	All	257/294 (87%)	256 (100%)	1 (0%)	84	87

All (1) residues with a non-rotameric sidechain are listed below:

Mol	Chain	Res	Type
1	B	205	LEU

Sometimes sidechains can be flipped to improve hydrogen bonding and reduce clashes. There are no such sidechains identified.

5.3.3 RNA [i](#)

There are no RNA molecules in this entry.

5.4 Non-standard residues in protein, DNA, RNA chains [i](#)

There are no non-standard protein/DNA/RNA residues in this entry.

5.5 Carbohydrates [i](#)

There are no oligosaccharides in this entry.

5.6 Ligand geometry [i](#)

23 ligands are modelled in this entry.

In the following table, the Counts columns list the number of bonds (or angles) for which Mogul statistics could be retrieved, the number of bonds (or angles) that are observed in the model and the number of bonds (or angles) that are defined in the Chemical Component Dictionary. The Link column lists molecule types, if any, to which the group is linked. The Z score for a bond

length (or angle) is the number of standard deviations the observed value is removed from the expected value. A bond length (or angle) with $|Z| > 2$ is considered an outlier worth inspection. RMSZ is the root-mean-square of all Z scores of the bond lengths (or angles).

Mol	Type	Chain	Res	Link	Bond lengths			Bond angles		
					Counts	RMSZ	$\# Z > 2$	Counts	RMSZ	$\# Z > 2$
2	SO4	A	1104	-	4,4,4	0.23	0	6,6,6	0.07	0
5	EDO	B	1108	-	3,3,3	0.42	0	2,2,2	0.38	0
4	PEG	A	1109	-	6,6,6	0.64	0	5,5,5	0.28	0
2	SO4	A	1101	-	4,4,4	0.24	0	6,6,6	0.08	0
5	EDO	A	1112	-	3,3,3	0.43	0	2,2,2	0.34	0
5	EDO	A	1113	-	3,3,3	0.43	0	2,2,2	0.35	0
5	EDO	B	1109	-	3,3,3	0.43	0	2,2,2	0.28	0
2	SO4	B	1103	-	4,4,4	0.23	0	6,6,6	0.07	0
4	PEG	B	1105	-	6,6,6	0.65	0	5,5,5	0.30	0
5	EDO	A	1114	-	3,3,3	0.45	0	2,2,2	0.28	0
2	SO4	A	1106	-	4,4,4	0.24	0	6,6,6	0.06	0
4	PEG	A	1110	-	6,6,6	0.66	0	5,5,5	0.36	0
5	EDO	A	1111	-	3,3,3	0.44	0	2,2,2	0.32	0
2	SO4	A	1102	-	4,4,4	0.24	0	6,6,6	0.09	0
2	SO4	A	1105	-	4,4,4	0.23	0	6,6,6	0.09	0
2	SO4	B	1102	-	4,4,4	0.23	0	6,6,6	0.08	0
2	SO4	B	1101	-	4,4,4	0.24	0	6,6,6	0.07	0
2	SO4	A	1107	-	4,4,4	0.23	0	6,6,6	0.08	0
4	PEG	B	1106	-	6,6,6	0.60	0	5,5,5	0.37	0
3	MPD	A	1108	-	7,7,7	0.34	0	9,10,10	0.29	0
2	SO4	A	1103	-	4,4,4	0.24	0	6,6,6	0.10	0
5	EDO	B	1107	-	3,3,3	0.43	0	2,2,2	0.33	0
3	MPD	B	1104	-	7,7,7	0.34	0	9,10,10	0.40	0

In the following table, the Chirals column lists the number of chiral outliers, the number of chiral centers analysed, the number of these observed in the model and the number defined in the Chemical Component Dictionary. Similar counts are reported in the Torsion and Rings columns. '-' means no outliers of that kind were identified.

Mol	Type	Chain	Res	Link	Chirals	Torsions	Rings
5	EDO	B	1109	-	-	0/1/1/1	-
5	EDO	A	1113	-	-	0/1/1/1	-
5	EDO	B	1108	-	-	0/1/1/1	-
4	PEG	B	1105	-	-	3/4/4/4	-
5	EDO	A	1114	-	-	0/1/1/1	-
4	PEG	B	1106	-	-	1/4/4/4	-
5	EDO	B	1107	-	-	1/1/1/1	-
4	PEG	A	1109	-	-	1/4/4/4	-
3	MPD	A	1108	-	-	0/5/5/5	-

Continued on next page...

Continued from previous page...

Mol	Type	Chain	Res	Link	Chirals	Torsions	Rings
4	PEG	A	1110	-	-	2/4/4/4	-
5	EDO	A	1111	-	-	1/1/1/1	-
5	EDO	A	1112	-	-	0/1/1/1	-
3	MPD	B	1104	-	-	0/5/5/5	-

There are no bond length outliers.

There are no bond angle outliers.

There are no chirality outliers.

All (9) torsion outliers are listed below:

Mol	Chain	Res	Type	Atoms
4	A	1110	PEG	O2-C3-C4-O4
4	A	1109	PEG	C1-C2-O2-C3
4	B	1105	PEG	C4-C3-O2-C2
4	B	1105	PEG	O1-C1-C2-O2
5	B	1107	EDO	O1-C1-C2-O2
5	A	1111	EDO	O1-C1-C2-O2
4	B	1106	PEG	C4-C3-O2-C2
4	A	1110	PEG	C1-C2-O2-C3
4	B	1105	PEG	C1-C2-O2-C3

There are no ring outliers.

4 monomers are involved in 4 short contacts:

Mol	Chain	Res	Type	Clashes	Symm-Clashes
4	B	1106	PEG	1	0
3	A	1108	MPD	1	0
2	A	1103	SO4	1	0
3	B	1104	MPD	1	0

5.7 Other polymers [i](#)

There are no such residues in this entry.

5.8 Polymer linkage issues [i](#)

There are no chain breaks in this entry.

6 Fit of model and data

6.1 Protein, DNA and RNA chains

In the following table, the column labelled ‘#RSRZ> 2’ contains the number (and percentage) of RSRZ outliers, followed by percent RSRZ outliers for the chain as percentile scores relative to all X-ray entries and entries of similar resolution. The OWAB column contains the minimum, median, 95th percentile and maximum values of the occupancy-weighted average B-factor per residue. The column labelled ‘Q< 0.9’ lists the number of (and percentage) of residues with an average occupancy less than 0.9.

Mol	Chain	Analysed	<RSRZ>	#RSRZ>2	OWAB(Å ²)	Q<0.9
1	A	162/167 (97%)	0.85	19 (11%) 9 10	32, 64, 95, 112	1 (0%)
1	B	136/167 (81%)	0.91	18 (13%) 7 7	30, 63, 116, 135	0
All	All	298/334 (89%)	0.88	37 (12%) 8 8	30, 64, 108, 135	1 (0%)

All (37) RSRZ outliers are listed below:

Mol	Chain	Res	Type	RSRZ
1	B	255	GLY	7.9
1	B	254	SER	6.8
1	B	202	VAL	6.2
1	A	254	SER	4.7
1	B	246	GLU	4.5
1	A	921	SER	4.5
1	A	922	THR	3.7
1	B	963	GLU	3.2
1	A	923	LEU	3.1
1	B	997	VAL	3.1
1	B	256	GLY	3.0
1	B	998	ASN	3.0
1	A	202	VAL	2.8
1	A	200	GLY	2.8
1	B	962	LEU	2.8
1	B	996	ARG	2.8
1	B	975	LEU	2.7
1	A	203	GLU	2.7
1	A	1001	TYR	2.6
1	A	1011	LEU	2.6
1	B	978	LEU	2.6
1	A	949	TYR	2.5
1	B	931	LEU	2.4
1	B	995	GLU	2.4

Continued on next page...

Continued from previous page...

Mol	Chain	Res	Type	RSRZ
1	B	251	ALA	2.3
1	B	205	LEU	2.3
1	B	994	PHE	2.3
1	A	972[A]	ARG	2.3
1	A	924	LEU	2.3
1	A	960	TYR	2.2
1	A	208	GLN	2.2
1	A	1007	GLN	2.2
1	A	986	VAL	2.2
1	B	253	GLU	2.2
1	A	1005	SER	2.2
1	A	985	THR	2.2
1	A	207	ILE	2.1

6.2 Non-standard residues in protein, DNA, RNA chains [i](#)

There are no non-standard protein/DNA/RNA residues in this entry.

6.3 Carbohydrates [i](#)

There are no oligosaccharides in this entry.

6.4 Ligands [i](#)

In the following table, the Atoms column lists the number of modelled atoms in the group and the number defined in the chemical component dictionary. The B-factors column lists the minimum, median, 95th percentile and maximum values of B factors of atoms in the group. The column labelled 'Q< 0.9' lists the number of atoms with occupancy less than 0.9.

Mol	Type	Chain	Res	Atoms	RSCC	RSR	B-factors(\AA^2)	Q<0.9
4	PEG	B	1105	7/7	0.54	0.29	101,121,135,135	0
5	EDO	A	1112	4/4	0.61	0.24	89,106,110,112	0
5	EDO	B	1107	4/4	0.61	0.20	93,112,116,124	0
2	SO4	A	1103	5/5	0.63	0.13	131,131,133,140	0
4	PEG	A	1110	7/7	0.65	0.20	88,108,120,120	0
2	SO4	A	1104	5/5	0.66	0.14	138,142,143,145	0
3	MPD	B	1104	8/8	0.70	0.33	92,113,130,135	0
2	SO4	A	1101	5/5	0.74	0.10	143,145,147,151	0
4	PEG	A	1109	7/7	0.76	0.24	87,117,130,133	0
2	SO4	B	1103	5/5	0.77	0.20	150,154,156,156	0

Continued on next page...

Continued from previous page...

Mol	Type	Chain	Res	Atoms	RSCC	RSR	B-factors(\AA^2)	Q<0.9
5	EDO	B	1108	4/4	0.77	0.25	90,108,113,114	0
5	EDO	A	1113	4/4	0.81	0.24	91,109,112,112	0
5	EDO	A	1114	4/4	0.82	0.21	81,97,107,111	0
2	SO4	A	1105	5/5	0.83	0.15	150,150,152,154	0
3	MPD	A	1108	8/8	0.84	0.23	100,120,136,136	0
2	SO4	B	1101	5/5	0.86	0.10	88,89,90,94	0
2	SO4	A	1106	5/5	0.86	0.25	145,150,154,154	0
4	PEG	B	1106	7/7	0.87	0.18	83,100,107,117	0
2	SO4	A	1102	5/5	0.87	0.17	98,99,110,113	0
2	SO4	A	1107	5/5	0.88	0.16	153,155,156,158	0
2	SO4	B	1102	5/5	0.88	0.17	144,147,151,151	0
5	EDO	B	1109	4/4	0.89	0.14	70,84,93,99	0
5	EDO	A	1111	4/4	0.92	0.15	80,96,111,118	0

6.5 Other polymers ⓘ

There are no such residues in this entry.