



# Full wwPDB X-ray Structure Validation Report ⓘ

Mar 1, 2026 – 09:15 AM UTC

PDB ID : 6MOD / pdb\_00006mod  
Title : Co-Crystal structure of P. aeruginosa LpxC-50432 complex  
Authors : Stein, A.J.; Holt, M.C.; Assar, Z.; Cohen, F.; Andrews, L.; Cirz, R.  
Deposited on : 2018-10-04  
Resolution : 1.85 Å(reported)

This is a Full wwPDB X-ray Structure Validation Report for a publicly released PDB entry.

We welcome your comments at [validation@mail.wwpdb.org](mailto:validation@mail.wwpdb.org)

A user guide is available at

<https://www.wwpdb.org/validation/2017/XrayValidationReportHelp>

with specific help available everywhere you see the ⓘ symbol.

The types of validation reports are described at

<http://www.wwpdb.org/validation/2017/FAQs#types>.

---

The following versions of software and data (see [references ⓘ](#)) were used in the production of this report:

MolProbity : 4-5-2 with Phenix2.0  
Mogul : 2022.3.0, CSD as543be (2022)  
Xtriage (Phenix) : 2.0  
EDS : 3.0  
Buster-report : wwPDB partial adaption of 1.1.7 (2018)  
Percentile statistics : 20250101.v01 (using entries in the PDB archive January 1st 2025)  
CCP4 : 9.0.010 (Gargrove)  
Density-Fitness : 1.0.12  
Ideal geometry (proteins) : Engh & Huber (2001)  
Ideal geometry (DNA, RNA) : Parkinson et al. (1996)  
Validation Pipeline (wwPDB-VP) : 2.49

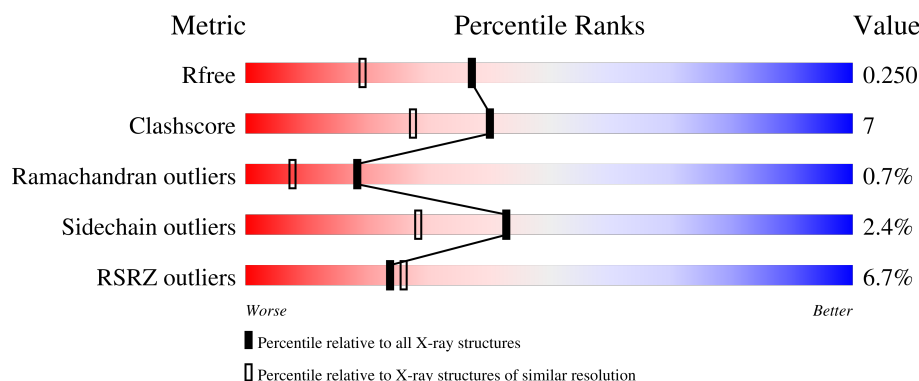
# 1 Overall quality at a glance

The following experimental techniques were used to determine the structure:

*X-RAY DIFFRACTION*

The reported resolution of this entry is 1.85 Å.

Percentile scores (ranging between 0-100) for global validation metrics of the entry are shown in the following graphic. The table shows the number of entries on which the scores are based.



Metric	Whole archive (#Entries)	Similar resolution (#Entries, resolution range(Å))
$R_{free}$	180053	3428 (1.86-1.86)
Clashscore	190562	3579 (1.86-1.86)
Ramachandran outliers	187476	3553 (1.86-1.86)
Sidechain outliers	187428	3553 (1.86-1.86)
RSRZ outliers	180081	3429 (1.86-1.86)

The table below summarises the geometric issues observed across the polymeric chains and their fit to the electron density. The red, orange, yellow and green segments of the lower bar indicate the fraction of residues that contain outliers for  $\geq 3$ , 2, 1 and 0 types of geometric quality criteria respectively. A grey segment represents the fraction of residues that are not modelled. The numeric value for each fraction is indicated below the corresponding segment, with a dot representing fractions  $\leq 5\%$ . The upper red bar (where present) indicates the fraction of residues that have poor fit to the electron density. The numeric value is given above the bar.

Mol	Chain	Length	Quality of chain
1	A	304	

## 2 Entry composition

There are 5 unique types of molecules in this entry. The entry contains 2499 atoms, of which 0 are hydrogens and 0 are deuteriums.

In the tables below, the ZeroOcc column contains the number of atoms modelled with zero occupancy, the AltConf column contains the number of residues with at least one atom in alternate conformation and the Trace column contains the number of residues modelled with at most 2 atoms.

- Molecule 1 is a protein called UDP-3-O-acyl-N-acetylglucosamine deacetylase.

Mol	Chain	Residues	Atoms					ZeroOcc	AltConf	Trace
1	A	298	Total	C	N	O	S	0	11	0
			2364	1509	397	451	7			

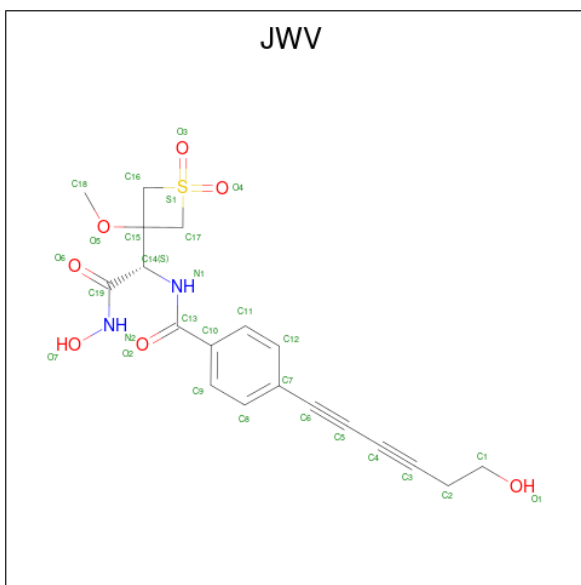
There are 7 discrepancies between the modelled and reference sequences:

Chain	Residue	Modelled	Actual	Comment	Reference
A	-4	HIS	-	expression tag	UNP B7UZI4
A	-3	HIS	-	expression tag	UNP B7UZI4
A	-2	HIS	-	expression tag	UNP B7UZI4
A	-1	HIS	-	expression tag	UNP B7UZI4
A	0	ALA	-	expression tag	UNP B7UZI4
A	1	THR	-	expression tag	UNP B7UZI4
A	129	VAL	ILE	conflict	UNP B7UZI4

- Molecule 2 is MAGNESIUM ION (CCD ID: MG) (formula: Mg).

Mol	Chain	Residues	Atoms		ZeroOcc	AltConf
2	A	1	Total	Mg	0	0
			1	1		

- Molecule 3 is N-[(1S)-2-(hydroxyamino)-1-(3-methoxy-1,1-dioxo-1lambda 6 -thietan-3-yl)-2-oxoethyl]-4-(6-hydroxyhexa-1,3-diyn-1-yl)benzamide (CCD ID: JWV) (formula: C<sub>19</sub>H<sub>20</sub>N<sub>2</sub>O<sub>7</sub>S).



Mol	Chain	Residues	Atoms					ZeroOcc	AltConf
3	A	1	Total	C	N	O	S	0	0
			29	19	2	7	1		

- Molecule 4 is GLYCEROL (CCD ID: GOL) (formula:  $C_3H_8O_3$ ).



Mol	Chain	Residues	Atoms			ZeroOcc	AltConf
4	A	1	Total	C	O	0	0
			6	3	3		
4	A	1	Total	C	O	0	0
			6	3	3		

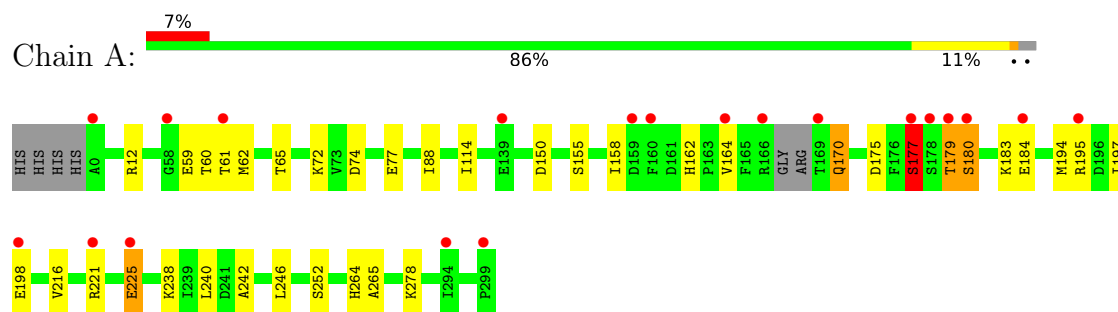
- Molecule 5 is water.

Mol	Chain	Residues	Atoms		ZeroOcc	AltConf
5	A	93	Total 93	O 93	0	0

### 3 Residue-property plots [i](#)

These plots are drawn for all protein, RNA, DNA and oligosaccharide chains in the entry. The first graphic for a chain summarises the proportions of the various outlier classes displayed in the second graphic. The second graphic shows the sequence view annotated by issues in geometry and electron density. Residues are color-coded according to the number of geometric quality criteria for which they contain at least one outlier: green = 0, yellow = 1, orange = 2 and red = 3 or more. A red dot above a residue indicates a poor fit to the electron density ( $RSRZ > 2$ ). Stretches of 2 or more consecutive residues without any outlier are shown as a green connector. Residues present in the sample, but not in the model, are shown in grey.

- Molecule 1: UDP-3-O-acetyl-N-acetylglucosamine deacetylase



## 4 Data and refinement statistics

Property	Value	Source
Space group	P 1 21 1	Depositor
Cell constants a, b, c, $\alpha$ , $\beta$ , $\gamma$	36.08Å 66.91Å 63.46Å 90.00° 91.08° 90.00°	Depositor
Resolution (Å)	63.45 – 1.85 63.45 – 1.85	Depositor EDS
% Data completeness (in resolution range)	98.3 (63.45-1.85) 98.3 (63.45-1.85)	Depositor EDS
$R_{merge}$	(Not available)	Depositor
$R_{sym}$	(Not available)	Depositor
$\langle I/\sigma(I) \rangle$ <sup>1</sup>	1.58 (at 1.86Å)	Xtriage
Refinement program	REFMAC 5.8.0131	Depositor
R, $R_{free}$	0.184 , 0.239 0.198 , 0.250	Depositor DCC
$R_{free}$ test set	1261 reflections (4.91%)	wwPDB-VP
Wilson B-factor (Å <sup>2</sup> )	25.0	Xtriage
Anisotropy	0.087	Xtriage
Bulk solvent $k_{sol}$ (e/Å <sup>3</sup> ), $B_{sol}$ (Å <sup>2</sup> )	0.38 , 29.8	EDS
L-test for twinning <sup>2</sup>	$\langle  L  \rangle = 0.50$ , $\langle L^2 \rangle = 0.34$	Xtriage
Estimated twinning fraction	0.047 for h,-k,-l	Xtriage
$F_o, F_c$ correlation	0.95	EDS
Total number of atoms	2499	wwPDB-VP
Average B, all atoms (Å <sup>2</sup> )	28.0	wwPDB-VP

Xtriage's analysis on translational NCS is as follows: *The largest off-origin peak in the Patterson function is 8.07% of the height of the origin peak. No significant pseudotranslation is detected.*

<sup>1</sup>Intensities estimated from amplitudes.

<sup>2</sup>Theoretical values of  $\langle |L| \rangle$ ,  $\langle L^2 \rangle$  for acentric reflections are 0.5, 0.333 respectively for untwinned datasets, and 0.375, 0.2 for perfectly twinned datasets.

## 5 Model quality

### 5.1 Standard geometry

Bond lengths and bond angles in the following residue types are not validated in this section: MG, GOL, JWV

The Z score for a bond length (or angle) is the number of standard deviations the observed value is removed from the expected value. A bond length (or angle) with  $|Z| > 5$  is considered an outlier worth inspection. RMSZ is the root-mean-square of all Z scores of the bond lengths (or angles).

Mol	Chain	Bond lengths		Bond angles	
		RMSZ	$\# Z  > 5$	RMSZ	$\# Z  > 5$
1	A	0.81	1/2436 (0.0%)	0.95	3/3294 (0.1%)

Chiral center outliers are detected by calculating the chiral volume of a chiral center and verifying if the center is modelled as a planar moiety or with the opposite hand. A planarity outlier is detected by checking planarity of atoms in a peptide group, atoms in a mainchain group or atoms of a sidechain that are expected to be planar.

Mol	Chain	#Chirality outliers	#Planarity outliers
1	A	0	2

All (1) bond length outliers are listed below:

Mol	Chain	Res	Type	Atoms	Z	Observed(Å)	Ideal(Å)
1	A	183	LYS	C-O	-5.12	1.17	1.24

All (3) bond angle outliers are listed below:

Mol	Chain	Res	Type	Atoms	Z	Observed(°)	Ideal(°)
1	A	177	SER	N-CA-C	-5.44	106.48	113.01
1	A	162	HIS	CA-C-N	5.09	125.13	119.32
1	A	162	HIS	C-N-CA	5.09	125.13	119.32

There are no chirality outliers.

All (2) planarity outliers are listed below:

Mol	Chain	Res	Type	Group
1	A	195	ARG	Sidechain
1	A	221	ARG	Sidechain



## 5.2 Too-close contacts ⓘ

In the following table, the Non-H and H(model) columns list the number of non-hydrogen atoms and hydrogen atoms in the chain respectively. The H(added) column lists the number of hydrogen atoms added and optimized by MolProbity. The Clashes column lists the number of clashes within the asymmetric unit, whereas Symm-Clashes lists symmetry-related clashes.

Mol	Chain	Non-H	H(model)	H(added)	Clashes	Symm-Clashes
1	A	2364	0	2404	32	1
2	A	1	0	0	0	0
3	A	29	0	0	2	0
4	A	12	0	16	4	0
5	A	93	0	0	6	0
All	All	2499	0	2420	32	1

The all-atom clashscore is defined as the number of clashes found per 1000 atoms (including hydrogen atoms). The all-atom clashscore for this structure is 7.

All (32) close contacts within the same asymmetric unit are listed below, sorted by their clash magnitude.

Atom-1	Atom-2	Interatomic distance (Å)	Clash overlap (Å)
1:A:278:LYS:HE3	5:A:475:HOH:O	1.82	0.80
1:A:198:GLU:HG2	5:A:436:HOH:O	1.83	0.76
1:A:252:SER:HA	4:A:303:GOL:H31	1.74	0.69
1:A:225:GLU:H	1:A:225:GLU:CD	2.03	0.67
1:A:155:SER:OG	5:A:401:HOH:O	2.14	0.66
1:A:175:ASP:O	1:A:179:THR:HG23	1.99	0.62
1:A:59:GLU:HB2	1:A:65[B]:THR:CG2	2.29	0.62
1:A:62:MET:HA	1:A:62:MET:HE2	1.83	0.60
1:A:177:SER:HA	5:A:430:HOH:O	2.02	0.59
1:A:59:GLU:HB2	1:A:65[B]:THR:HG21	1.84	0.59
1:A:194:MET:HE3	1:A:216:VAL:CG1	2.33	0.59
1:A:72:LYS:HE3	1:A:74:ASP:OD2	2.04	0.57
1:A:198:GLU:CG	5:A:436:HOH:O	2.48	0.56
1:A:265:ALA:HB3	4:A:304:GOL:H2	1.86	0.55
1:A:158:ILE:HG13	1:A:170:GLN:HB2	1.89	0.55
1:A:194:MET:HE2	1:A:197:ILE:HG13	1.90	0.53
1:A:242:ALA:O	1:A:246:LEU:HG	2.08	0.53
1:A:72:LYS:CE	1:A:74:ASP:OD2	2.60	0.50
1:A:194:MET:HE2	1:A:194:MET:HA	1.93	0.50
1:A:60:THR:O	4:A:304:GOL:O1	2.30	0.49
1:A:278:LYS:CE	5:A:475:HOH:O	2.50	0.47
1:A:72:LYS:HD2	1:A:74:ASP:OD1	2.15	0.47

*Continued on next page...*

Continued from previous page...

Atom-1	Atom-2	Interatomic distance (Å)	Clash overlap (Å)
1:A:194:MET:HE1	3:A:302:JWV:C1	2.45	0.47
1:A:59:GLU:O	1:A:65[B]:THR:HG22	2.14	0.47
1:A:77:GLU:OE2	3:A:302:JWV:O7	2.34	0.46
1:A:158:ILE:HG21	1:A:238:LYS:HE3	1.99	0.45
1:A:194:MET:HE3	1:A:216:VAL:HG13	1.98	0.44
1:A:88:ILE:HD11	1:A:114:ILE:HG21	2.01	0.43
1:A:240:LEU:C	1:A:240:LEU:HD23	2.44	0.42
1:A:179:THR:OG1	1:A:184:GLU:HG3	2.19	0.42
1:A:264:HIS:N	4:A:304:GOL:H11	2.35	0.42
1:A:194:MET:HE3	1:A:216:VAL:HG11	2.02	0.41

All (1) symmetry-related close contacts are listed below. The label for Atom-2 includes the symmetry operator and encoded unit-cell translations to be applied.

Atom-1	Atom-2	Interatomic distance (Å)	Clash overlap (Å)
1:A:12:ARG:NH1	1:A:150:ASP:OD2[2_445]	2.12	0.08

## 5.3 Torsion angles

### 5.3.1 Protein backbone

In the following table, the Percentiles column shows the percent Ramachandran outliers of the chain as a percentile score with respect to all X-ray entries followed by that with respect to entries of similar resolution.

The Analysed column shows the number of residues for which the backbone conformation was analysed, and the total number of residues.

Mol	Chain	Analysed	Favoured	Allowed	Outliers	Percentiles
1	A	305/304 (100%)	294 (96%)	9 (3%)	2 (1%)	<div>18</div> <div>8</div>

All (2) Ramachandran outliers are listed below:

Mol	Chain	Res	Type
1	A	61	THR
1	A	180	SER

### 5.3.2 Protein sidechains [i](#)

In the following table, the Percentiles column shows the percent sidechain outliers of the chain as a percentile score with respect to all X-ray entries followed by that with respect to entries of similar resolution.

The Analysed column shows the number of residues for which the sidechain conformation was analysed, and the total number of residues.

Mol	Chain	Analysed	Rotameric	Outliers	Percentiles
1	A	262/257 (102%)	256 (98%)	6 (2%)	44 30

All (6) residues with a non-rotameric sidechain are listed below:

Mol	Chain	Res	Type
1	A	164	VAL
1	A	170	GLN
1	A	177	SER
1	A	179	THR
1	A	180	SER
1	A	225	GLU

Sometimes sidechains can be flipped to improve hydrogen bonding and reduce clashes. All (2) such sidechains are listed below:

Mol	Chain	Res	Type
1	A	120	GLN
1	A	170	GLN

### 5.3.3 RNA [i](#)

There are no RNA molecules in this entry.

## 5.4 Non-standard residues in protein, DNA, RNA chains [i](#)

There are no non-standard protein/DNA/RNA residues in this entry.

## 5.5 Carbohydrates [i](#)

There are no oligosaccharides in this entry.

## 5.6 Ligand geometry

Of 4 ligands modelled in this entry, 1 is monoatomic - leaving 3 for Mogul analysis.

In the following table, the Counts columns list the number of bonds (or angles) for which Mogul statistics could be retrieved, the number of bonds (or angles) that are observed in the model and the number of bonds (or angles) that are defined in the Chemical Component Dictionary. The Link column lists molecule types, if any, to which the group is linked. The Z score for a bond length (or angle) is the number of standard deviations the observed value is removed from the expected value. A bond length (or angle) with  $|Z| > 2$  is considered an outlier worth inspection. RMSZ is the root-mean-square of all Z scores of the bond lengths (or angles).

Mol	Type	Chain	Res	Link	Bond lengths			Bond angles		
					Counts	RMSZ	# $ Z  > 2$	Counts	RMSZ	# $ Z  > 2$
4	GOL	A	303	-	5,5,5	0.66	0	5,5,5	1.86	1 (20%)
3	JWV	A	302	2	24,30,30	1.31	1 (4%)	31,42,42	1.04	3 (9%)
4	GOL	A	304	-	5,5,5	0.36	0	5,5,5	1.07	0

In the following table, the Chirals column lists the number of chiral outliers, the number of chiral centers analysed, the number of these observed in the model and the number defined in the Chemical Component Dictionary. Similar counts are reported in the Torsion and Rings columns. '-' means no outliers of that kind were identified.

Mol	Type	Chain	Res	Link	Chirals	Torsions	Rings
4	GOL	A	303	-	-	2/4/4/4	-
3	JWV	A	302	2	-	5/26/42/42	0/2/2/2
4	GOL	A	304	-	-	2/4/4/4	-

All (1) bond length outliers are listed below:

Mol	Chain	Res	Type	Atoms	Z	Observed(Å)	Ideal(Å)
3	A	302	JWV	O5-C15	-2.78	1.42	1.45

All (4) bond angle outliers are listed below:

Mol	Chain	Res	Type	Atoms	Z	Observed(°)	Ideal(°)
4	A	303	GOL	O3-C3-C2	3.36	125.52	110.38
3	A	302	JWV	O5-C15-C16	2.27	115.00	108.69
3	A	302	JWV	C16-C15-C14	-2.16	112.30	124.73
3	A	302	JWV	C14-C19-N2	-2.08	111.65	115.89

There are no chirality outliers.

All (9) torsion outliers are listed below:

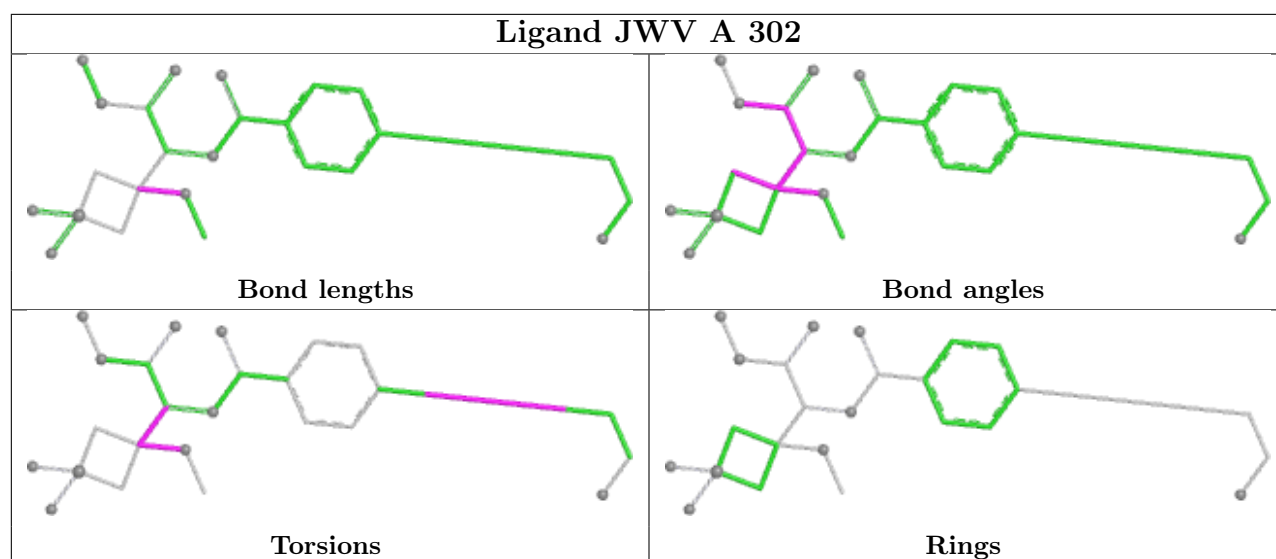
Mol	Chain	Res	Type	Atoms
3	A	302	JWV	C4-C5-C6-C7
3	A	302	JWV	C17-C15-O5-C18
4	A	303	GOL	C1-C2-C3-O3
4	A	304	GOL	C1-C2-C3-O3
4	A	303	GOL	O2-C2-C3-O3
3	A	302	JWV	C3-C4-C5-C6
3	A	302	JWV	C2-C3-C4-C5
4	A	304	GOL	O2-C2-C3-O3
3	A	302	JWV	N1-C14-C15-C16

There are no ring outliers.

3 monomers are involved in 6 short contacts:

Mol	Chain	Res	Type	Clashes	Symm-Clashes
4	A	303	GOL	1	0
3	A	302	JWV	2	0
4	A	304	GOL	3	0

The following is a two-dimensional graphical depiction of Mogul quality analysis of bond lengths, bond angles, torsion angles, and ring geometry for all instances of the Ligand of Interest. In addition, ligands with molecular weight > 250 and outliers as shown on the validation Tables will also be included. For torsion angles, if less than 5% of the Mogul distribution of torsion angles is within 10 degrees of the torsion angle in question, then that torsion angle is considered an outlier. Any bond that is central to one or more torsion angles identified as an outlier by Mogul will be highlighted in the graph. For rings, the root-mean-square deviation (RMSD) between the ring in question and similar rings identified by Mogul is calculated over all ring torsion angles. If the average RMSD is greater than 60 degrees and the minimal RMSD between the ring in question and any Mogul-identified rings is also greater than 60 degrees, then that ring is considered an outlier. The outliers are highlighted in purple. The color gray indicates Mogul did not find sufficient equivalents in the CSD to analyse the geometry.



## 5.7 Other polymers [i](#)

There are no such residues in this entry.

## 5.8 Polymer linkage issues [i](#)

There are no chain breaks in this entry.

## 6 Fit of model and data [i](#)

### 6.1 Protein, DNA and RNA chains [i](#)

In the following table, the column labelled ‘#RSRZ> 2’ contains the number (and percentage) of RSRZ outliers, followed by percent RSRZ outliers for the chain as percentile scores relative to all X-ray entries and entries of similar resolution. The OWAB column contains the minimum, median, 95<sup>th</sup> percentile and maximum values of the occupancy-weighted average B-factor per residue. The column labelled ‘Q< 0.9’ lists the number of (and percentage) of residues with an average occupancy less than 0.9.

Mol	Chain	Analysed	<RSRZ>	#RSRZ>2	OWAB(Å <sup>2</sup> )	Q<0.9
1	A	298/304 (98%)	0.39	20 (6%) 24 26	13, 26, 42, 59	11 (3%)

All (20) RSRZ outliers are listed below:

Mol	Chain	Res	Type	RSRZ
1	A	160	PHE	4.5
1	A	169	THR	4.0
1	A	198	GLU	3.9
1	A	179	THR	3.7
1	A	177	SER	3.4
1	A	294	ILE	3.0
1	A	225	GLU	2.8
1	A	58	GLY	2.7
1	A	61	THR	2.7
1	A	180	SER	2.5
1	A	178	SER	2.5
1	A	184	GLU	2.5
1	A	221	ARG	2.4
1	A	139	GLU	2.4
1	A	166	ARG	2.3
1	A	164	VAL	2.2
1	A	0	ALA	2.2
1	A	195	ARG	2.2
1	A	159	ASP	2.1
1	A	299	PRO	2.0

### 6.2 Non-standard residues in protein, DNA, RNA chains [i](#)

There are no non-standard protein/DNA/RNA residues in this entry.

## 6.3 Carbohydrates [i](#)

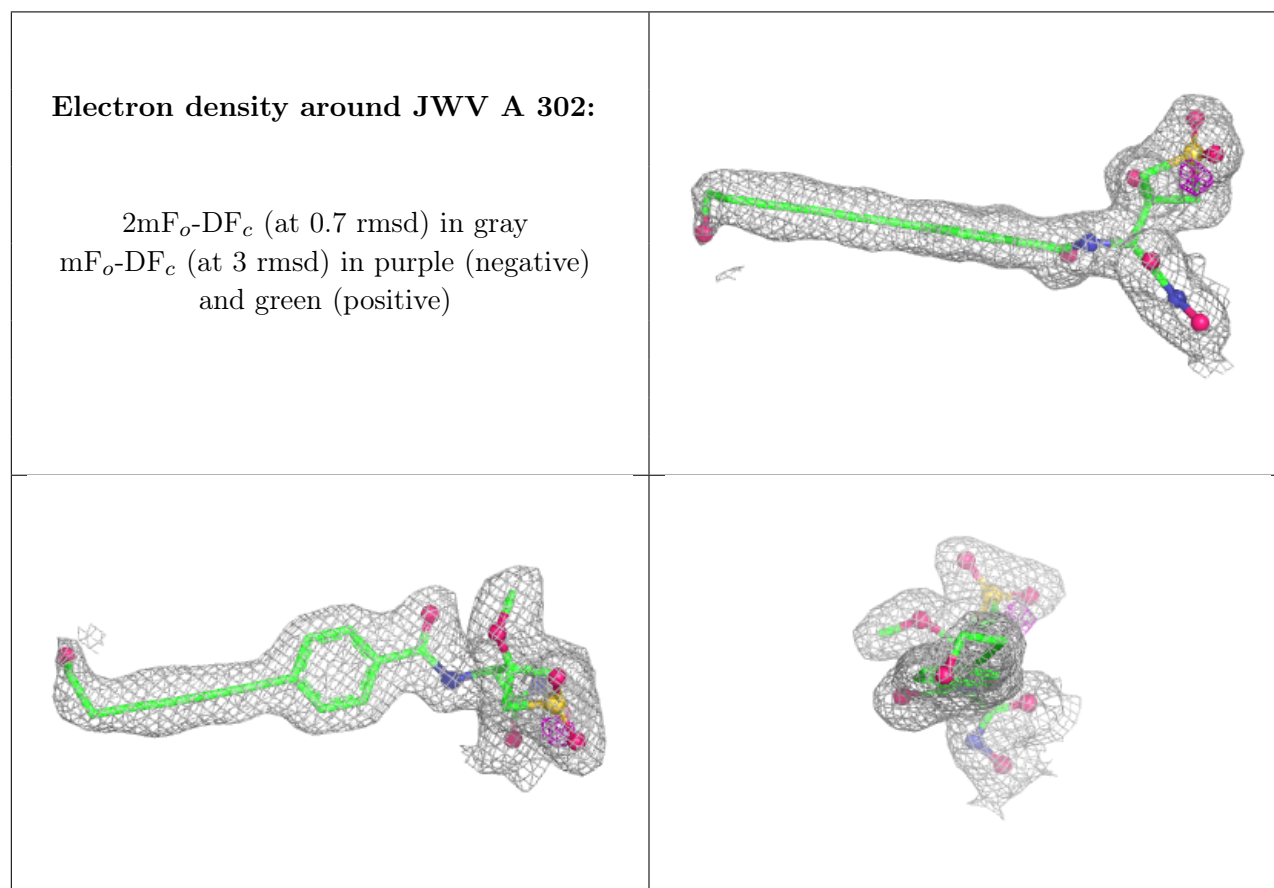
There are no oligosaccharides in this entry.

## 6.4 Ligands [i](#)

In the following table, the Atoms column lists the number of modelled atoms in the group and the number defined in the chemical component dictionary. The B-factors column lists the minimum, median, 95<sup>th</sup> percentile and maximum values of B factors of atoms in the group. The column labelled 'Q< 0.9' lists the number of atoms with occupancy less than 0.9.

Mol	Type	Chain	Res	Atoms	RSCC	RSR	B-factors( $\text{\AA}^2$ )	Q<0.9
4	GOL	A	304	6/6	0.77	0.15	30,39,40,43	0
4	GOL	A	303	6/6	0.85	0.14	27,33,39,46	0
3	JWV	A	302	29/29	0.96	0.08	21,23,41,48	0
2	MG	A	301	1/1	0.99	0.05	14,14,14,14	0

The following is a graphical depiction of the model fit to experimental electron density of all instances of the Ligand of Interest. In addition, ligands with molecular weight > 250 and outliers as shown on the geometry validation Tables will also be included. Each fit is shown from different orientation to approximate a three-dimensional view.





## 6.5 Other polymers [i](#)

There are no such residues in this entry.