



wwPDB X-ray Structure Validation Summary Report ⓘ

Mar 9, 2026 – 07:53 PM UTC

PDB ID : 4LSV / pdb_00004lsv
Title : Crystal structure of broadly and potently neutralizing antibody 3BNC117 in complex with HIV-1 clade C C1086 gp120
Authors : Zhou, T.; Moquin, S.; Kwong, P.D.
Deposited on : 2013-07-23
Resolution : 3.00 Å(reported)

This is a wwPDB X-ray Structure Validation Summary Report for a publicly released PDB entry.

We welcome your comments at validation@mail.wwpdb.org

A user guide is available at

<https://www.wwpdb.org/validation/2017/XrayValidationReportHelp>

with specific help available everywhere you see the ⓘ symbol.

The types of validation reports are described at

<http://www.wwpdb.org/validation/2017/FAQs#types>.

The following versions of software and data (see [references ⓘ](#)) were used in the production of this report:

MolProbity	:	4-5-2 with Phenix2.0
Mogul	:	2022.3.0, CSD as543be (2022)
Xtriage (Phenix)	:	2.0
EDS	:	3.0
Percentile statistics	:	20250101.v01 (using entries in the PDB archive January 1st 2025)
CCP4	:	9.0.010 (Gargrove)
Density-Fitness	:	1.0.12
Ideal geometry (proteins)	:	Engh & Huber (2001)
Ideal geometry (DNA, RNA)	:	Parkinson et al. (1996)
Validation Pipeline (wwPDB-VP)	:	2.49

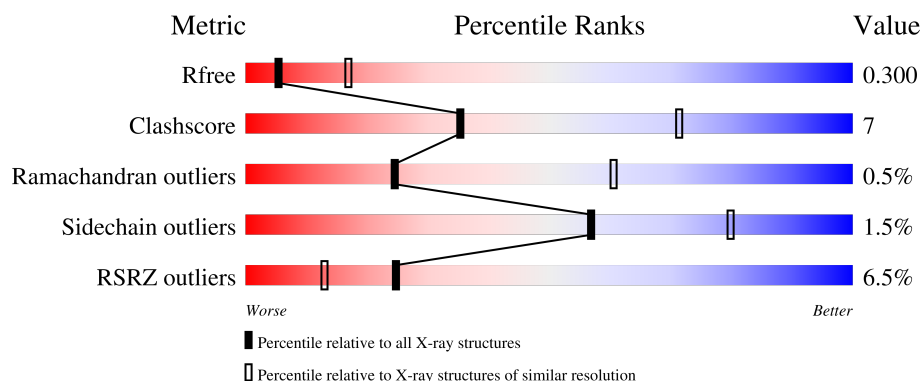
1 Overall quality at a glance

The following experimental techniques were used to determine the structure:

X-RAY DIFFRACTION

The reported resolution of this entry is 3.00 Å.

Percentile scores (ranging between 0-100) for global validation metrics of the entry are shown in the following graphic. The table shows the number of entries on which the scores are based.



Metric	Whole archive (#Entries)	Similar resolution (#Entries, resolution range(Å))
R_{free}	180053	2672 (3.00-3.00)
Clashscore	190562	2977 (3.00-3.00)
Ramachandran outliers	187476	2877 (3.00-3.00)
Sidechain outliers	187428	2880 (3.00-3.00)
RSRZ outliers	180081	2671 (3.00-3.00)

The table below summarises the geometric issues observed across the polymeric chains and their fit to the electron density. The red, orange, yellow and green segments of the lower bar indicate the fraction of residues that contain outliers for ≥ 3 , 2, 1 and 0 types of geometric quality criteria respectively. A grey segment represents the fraction of residues that are not modelled. The numeric value for each fraction is indicated below the corresponding segment, with a dot representing fractions $\leq 5\%$. The upper red bar (where present) indicates the fraction of residues that have poor fit to the electron density. The numeric value is given above the bar.

Mol	Chain	Length	Quality of chain
1	G	358	<div> <div>11%</div> <div> <div></div> <div>76%</div> <div>18%</div> <div>..</div> </div> </div>
2	H	226	<div> <div>4%</div> <div> <div></div> <div>84%</div> <div>13%</div> <div>..</div> </div> </div>
3	L	206	<div> <div>%</div> <div> <div></div> <div>81%</div> <div>17%</div> <div>.</div> </div> </div>

The following table lists non-polymeric compounds, carbohydrate monomers and non-standard residues in protein, DNA, RNA chains that are outliers for geometric or electron-density-fit criteria:

Mol	Type	Chain	Res	Chirality	Geometry	Clashes	Electron density
4	NAG	G	505	-	-	X	-

2 Entry composition [i](#)

There are 6 unique types of molecules in this entry. The entry contains 6232 atoms, of which 0 are hydrogens and 0 are deuteriums.

In the tables below, the ZeroOcc column contains the number of atoms modelled with zero occupancy, the AltConf column contains the number of residues with at least one atom in alternate conformation and the Trace column contains the number of residues modelled with at most 2 atoms.

- Molecule 1 is a protein called envelope glycoprotein GP120.

Mol	Chain	Residues	Atoms					ZeroOcc	AltConf	Trace
1	G	343	Total	C	N	O	S	0	0	0
			2687	1681	468	518	20			

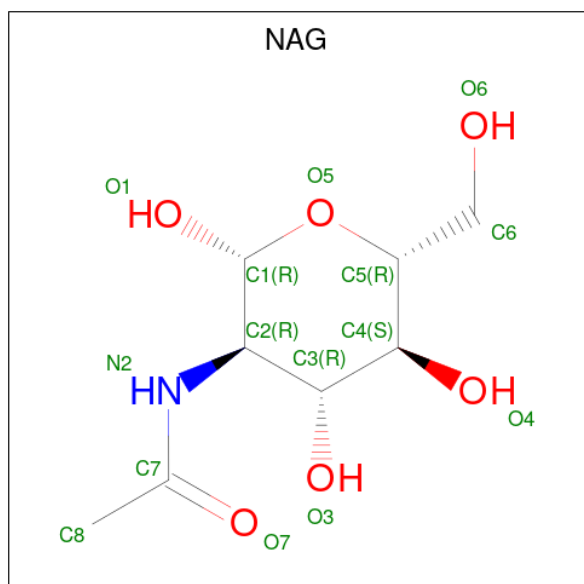
- Molecule 2 is a protein called HEAVY CHAIN OF ANTIBODY 3BNC117.

Mol	Chain	Residues	Atoms					ZeroOcc	AltConf	Trace
2	H	221	Total	C	N	O	S	0	0	0
			1710	1084	295	326	5			

- Molecule 3 is a protein called LIGHT CHAIN OF ANTIBODY 3BNC117.

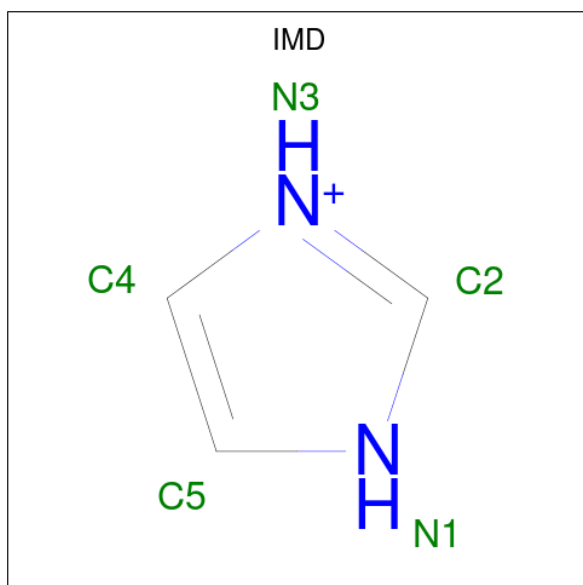
Mol	Chain	Residues	Atoms					ZeroOcc	AltConf	Trace
3	L	203	Total	C	N	O	S	0	0	0
			1599	1002	276	316	5			

- Molecule 4 is 2-acetamido-2-deoxy-beta-D-glucopyranose (CCD ID: NAG) (formula: $C_8H_{15}NO_6$).



Mol	Chain	Residues	Atoms				ZeroOcc	AltConf
4	G	1	Total	C	N	O	0	0
			14	8	1	5		
4	G	1	Total	C	N	O	0	0
			14	8	1	5		
4	G	1	Total	C	N	O	0	0
			14	8	1	5		
4	G	1	Total	C	N	O	0	0
			14	8	1	5		
4	G	1	Total	C	N	O	0	0
			14	8	1	5		
4	G	1	Total	C	N	O	0	0
			14	8	1	5		
4	G	1	Total	C	N	O	0	0
			14	8	1	5		
4	L	1	Total	C	N	O	0	0
			14	8	1	5		

- Molecule 5 is IMIDAZOLE (CCD ID: IMD) (formula: $C_3H_5N_2$).



Mol	Chain	Residues	Atoms			ZeroOcc	AltConf
5	L	1	Total	C	N		
			5	3	2	0	0

- Molecule 6 is water.

Mol	Chain	Residues	Atoms		ZeroOcc	AltConf
6	G	30	Total 30	O 30	0	0
6	H	24	Total 24	O 24	0	0
6	L	23	Total 23	O 23	0	0

4 Data and refinement statistics

Property	Value	Source
Space group	I 4 2 2	Depositor
Cell constants a, b, c, α , β , γ	191.62Å 191.62Å 103.95Å 90.00° 90.00° 90.00°	Depositor
Resolution (Å)	47.32 – 3.00 47.32 – 3.00	Depositor EDS
% Data completeness (in resolution range)	99.2 (47.32-3.00) 99.1 (47.32-3.00)	Depositor EDS
R_{merge}	0.09	Depositor
R_{sym}	(Not available)	Depositor
$\langle I/\sigma(I) \rangle$ ¹	3.30 (at 2.86Å)	Xtriage
Refinement program	PHENIX dev_998	Depositor
R, R_{free}	0.260 , 0.299 0.260 , 0.300	Depositor DCC
R_{free} test set	1148 reflections (5.02%)	wwPDB-VP
Wilson B-factor (Å ²)	51.8	Xtriage
Anisotropy	0.984	Xtriage
Bulk solvent k_{sol} (e/Å ³), B_{sol} (Å ²)	0.32 , 72.5	EDS
L-test for twinning ²	$\langle L \rangle = 0.46$, $\langle L^2 \rangle = 0.29$	Xtriage
Estimated twinning fraction	No twinning to report.	Xtriage
F_o, F_c correlation	0.89	EDS
Total number of atoms	6232	wwPDB-VP
Average B, all atoms (Å ²)	88.0	wwPDB-VP

Xtriage's analysis on translational NCS is as follows: *The largest off-origin peak in the Patterson function is 2.39% of the height of the origin peak. No significant pseudotranslation is detected.*

¹Intensities estimated from amplitudes.

²Theoretical values of $\langle |L| \rangle$, $\langle L^2 \rangle$ for acentric reflections are 0.5, 0.333 respectively for untwinned datasets, and 0.375, 0.2 for perfectly twinned datasets.

5 Model quality

5.1 Standard geometry

Bond lengths and bond angles in the following residue types are not validated in this section: IMD, NAG

The Z score for a bond length (or angle) is the number of standard deviations the observed value is removed from the expected value. A bond length (or angle) with $|Z| > 5$ is considered an outlier worth inspection. RMSZ is the root-mean-square of all Z scores of the bond lengths (or angles).

Mol	Chain	Bond lengths		Bond angles	
		RMSZ	$\# Z > 5$	RMSZ	$\# Z > 5$
1	G	0.26	0/2744	0.70	0/3722
2	H	0.26	0/1760	0.70	0/2404
3	L	0.25	0/1633	0.70	0/2217
All	All	0.26	0/6137	0.70	0/8343

There are no bond length outliers.

There are no bond angle outliers.

There are no chirality outliers.

There are no planarity outliers.

5.2 Too-close contacts

In the following table, the Non-H and H(model) columns list the number of non-hydrogen atoms and hydrogen atoms in the chain respectively. The H(added) column lists the number of hydrogen atoms added and optimized by MolProbity. The Clashes column lists the number of clashes within the asymmetric unit, whereas Symm-Clashes lists symmetry-related clashes.

Mol	Chain	Non-H	H(model)	H(added)	Clashes	Symm-Clashes
1	G	2687	0	2593	53	0
2	H	1710	0	1643	16	0
3	L	1599	0	1561	21	0
4	G	140	0	130	10	1
4	L	14	0	13	1	0
5	L	5	0	5	1	0
6	G	30	0	0	2	0
6	H	24	0	0	0	0
6	L	23	0	0	0	0
All	All	6232	0	5945	90	1

The all-atom clashscore is defined as the number of clashes found per 1000 atoms (including hydrogen atoms). The all-atom clashscore for this structure is 7.

The worst 5 of 90 close contacts within the same asymmetric unit are listed below, sorted by their clash magnitude.

Atom-1	Atom-2	Interatomic distance (Å)	Clash overlap (Å)
1:G:289:ASN:CG	4:G:505:NAG:H82	1.56	1.30
1:G:460:GLN:HA	1:G:460:GLN:OE1	1.55	1.00
4:G:505:NAG:O6	6:G:625:HOH:O	1.93	0.87
1:G:290:GLU:HB2	4:G:505:NAG:H83	1.60	0.80
1:G:289:ASN:CG	4:G:505:NAG:C8	2.47	0.80

All (1) symmetry-related close contacts are listed below. The label for Atom-2 includes the symmetry operator and encoded unit-cell translations to be applied.

Atom-1	Atom-2	Interatomic distance (Å)	Clash overlap (Å)
4:G:502:NAG:O4	4:G:502:NAG:O4[7_554]	2.16	0.04

5.3 Torsion angles [i](#)

5.3.1 Protein backbone [i](#)

In the following table, the Percentiles column shows the percent Ramachandran outliers of the chain as a percentile score with respect to all X-ray entries followed by that with respect to entries of similar resolution.

The Analysed column shows the number of residues for which the backbone conformation was analysed, and the total number of residues.

Mol	Chain	Analysed	Favoured	Allowed	Outliers	Percentiles	
1	G	337/358 (94%)	307 (91%)	28 (8%)	2 (1%)	21	56
2	H	217/226 (96%)	202 (93%)	14 (6%)	1 (0%)	24	60
3	L	201/206 (98%)	190 (94%)	10 (5%)	1 (0%)	24	60
All	All	755/790 (96%)	699 (93%)	52 (7%)	4 (0%)	24	60

All (4) Ramachandran outliers are listed below:

Mol	Chain	Res	Type
1	G	116	LEU
1	G	406	THR

Continued on next page...

Continued from previous page...

Mol	Chain	Res	Type
2	H	82(A)	LYS
3	L	138	ASN

5.3.2 Protein sidechains ⓘ

In the following table, the Percentiles column shows the percent sidechain outliers of the chain as a percentile score with respect to all X-ray entries followed by that with respect to entries of similar resolution.

The Analysed column shows the number of residues for which the sidechain conformation was analysed, and the total number of residues.

Mol	Chain	Analysed	Rotameric	Outliers	Percentiles	
1	G	302/312 (97%)	296 (98%)	6 (2%)	48	76
2	H	190/193 (98%)	187 (98%)	3 (2%)	55	79
3	L	181/183 (99%)	180 (99%)	1 (1%)	78	88
All	All	673/688 (98%)	663 (98%)	10 (2%)	57	80

5 of 10 residues with a non-rotameric sidechain are listed below:

Mol	Chain	Res	Type
2	H	195	ILE
2	H	199	ASN
3	L	96	GLU
1	G	460	GLN
1	G	464	ASP

Sometimes sidechains can be flipped to improve hydrogen bonding and reduce clashes. 5 of 9 such sidechains are listed below:

Mol	Chain	Res	Type
3	L	79	GLN
3	L	155	GLN
1	G	428	GLN
2	H	56	GLN
2	H	59	ASN

5.3.3 RNA ⓘ

There are no RNA molecules in this entry.

5.4 Non-standard residues in protein, DNA, RNA chains [i](#)

There are no non-standard protein/DNA/RNA residues in this entry.

5.5 Carbohydrates [i](#)

There are no oligosaccharides in this entry.

5.6 Ligand geometry [i](#)

12 ligands are modelled in this entry.

In the following table, the Counts columns list the number of bonds (or angles) for which Mogul statistics could be retrieved, the number of bonds (or angles) that are observed in the model and the number of bonds (or angles) that are defined in the Chemical Component Dictionary. The Link column lists molecule types, if any, to which the group is linked. The Z score for a bond length (or angle) is the number of standard deviations the observed value is removed from the expected value. A bond length (or angle) with $|Z| > 2$ is considered an outlier worth inspection. RMSZ is the root-mean-square of all Z scores of the bond lengths (or angles).

Mol	Type	Chain	Res	Link	Bond lengths			Bond angles		
					Counts	RMSZ	$\# Z > 2$	Counts	RMSZ	$\# Z > 2$
4	NAG	G	503	1	14,14,15	0.49	0	17,19,21	0.62	0
5	IMD	L	302	-	5,5,5	0.63	0	5,5,5	0.43	0
4	NAG	G	509	1	14,14,15	0.50	0	17,19,21	0.60	0
4	NAG	G	502	1	14,14,15	0.48	0	17,19,21	0.89	0
4	NAG	G	504	1	14,14,15	0.47	0	17,19,21	0.73	0
4	NAG	G	505	1	14,14,15	0.29	0	17,19,21	0.58	0
4	NAG	G	510	1	14,14,15	0.48	0	17,19,21	0.67	0
4	NAG	L	301	3	14,14,15	0.53	0	17,19,21	0.66	0
4	NAG	G	501	1	14,14,15	0.50	0	17,19,21	0.73	1 (5%)
4	NAG	G	508	1	14,14,15	0.46	0	17,19,21	0.77	0
4	NAG	G	506	1	14,14,15	0.52	0	17,19,21	0.92	1 (5%)
4	NAG	G	507	1	14,14,15	0.52	0	17,19,21	0.63	0

In the following table, the Chirals column lists the number of chiral outliers, the number of chiral centers analysed, the number of these observed in the model and the number defined in the Chemical Component Dictionary. Similar counts are reported in the Torsion and Rings columns. '-' means no outliers of that kind were identified.

Mol	Type	Chain	Res	Link	Chirals	Torsions	Rings
4	NAG	G	503	1	-	2/6/23/26	0/1/1/1
5	IMD	L	302	-	-	-	0/1/1/1

Continued on next page...

Continued from previous page...

Mol	Type	Chain	Res	Link	Chirals	Torsions	Rings
4	NAG	G	509	1	-	0/6/23/26	0/1/1/1
4	NAG	G	502	1	-	0/6/23/26	0/1/1/1
4	NAG	G	504	1	-	3/6/23/26	0/1/1/1
4	NAG	G	505	1	-	4/6/23/26	0/1/1/1
4	NAG	G	510	1	-	3/6/23/26	0/1/1/1
4	NAG	L	301	3	-	2/6/23/26	0/1/1/1
4	NAG	G	501	1	-	0/6/23/26	0/1/1/1
4	NAG	G	508	1	-	2/6/23/26	0/1/1/1
4	NAG	G	506	1	-	2/6/23/26	0/1/1/1
4	NAG	G	507	1	-	2/6/23/26	0/1/1/1

There are no bond length outliers.

All (2) bond angle outliers are listed below:

Mol	Chain	Res	Type	Atoms	Z	Observed(°)	Ideal(°)
4	G	506	NAG	C1-O5-C5	2.17	115.09	112.19
4	G	501	NAG	C1-O5-C5	2.00	114.87	112.19

There are no chirality outliers.

5 of 20 torsion outliers are listed below:

Mol	Chain	Res	Type	Atoms
4	G	503	NAG	C8-C7-N2-C2
4	G	503	NAG	O7-C7-N2-C2
4	G	504	NAG	C8-C7-N2-C2
4	G	504	NAG	O7-C7-N2-C2
4	G	505	NAG	C8-C7-N2-C2

There are no ring outliers.

5 monomers are involved in 13 short contacts:

Mol	Chain	Res	Type	Clashes	Symm-Clashes
5	L	302	IMD	1	0
4	G	502	NAG	0	1
4	G	505	NAG	9	0
4	L	301	NAG	1	0
4	G	506	NAG	1	0

5.7 Other polymers [i](#)

There are no such residues in this entry.

5.8 Polymer linkage issues [i](#)

There are no chain breaks in this entry.

6 Fit of model and data [i](#)

6.1 Protein, DNA and RNA chains [i](#)

In the following table, the column labelled ‘#RSRZ> 2’ contains the number (and percentage) of RSRZ outliers, followed by percent RSRZ outliers for the chain as percentile scores relative to all X-ray entries and entries of similar resolution. The OWAB column contains the minimum, median, 95th percentile and maximum values of the occupancy-weighted average B-factor per residue. The column labelled ‘Q< 0.9’ lists the number of (and percentage) of residues with an average occupancy less than 0.9.

Mol	Chain	Analysed	<RSRZ>	#RSRZ>2	OWAB(Å ²)	Q<0.9
1	G	343/358 (95%)	1.10	40 (11%) 9 5	71, 113, 144, 181	0
2	H	221/226 (97%)	0.37	8 (3%) 46 26	41, 68, 126, 178	0
3	L	203/206 (98%)	0.23	2 (0%) 79 59	33, 62, 103, 122	0
All	All	767/790 (97%)	0.66	50 (6%) 25 13	33, 91, 139, 181	0

The worst 5 of 50 RSRZ outliers are listed below:

Mol	Chain	Res	Type	RSRZ
2	H	126	PRO	3.9
1	G	433	ALA	3.3
1	G	210	PHE	3.2
1	G	262	ASN	3.1
3	L	122	ASP	2.9

6.2 Non-standard residues in protein, DNA, RNA chains [i](#)

There are no non-standard protein/DNA/RNA residues in this entry.

6.3 Carbohydrates [i](#)

There are no oligosaccharides in this entry.

6.4 Ligands [i](#)

In the following table, the Atoms column lists the number of modelled atoms in the group and the number defined in the chemical component dictionary. The B-factors column lists the minimum, median, 95th percentile and maximum values of B factors of atoms in the group. The column labelled ‘Q< 0.9’ lists the number of atoms with occupancy less than 0.9.

Mol	Type	Chain	Res	Atoms	RSCC	RSR	B-factors(\AA^2)	Q<0.9
4	NAG	G	510	14/15	0.45	0.16	81,88,91,92	0
4	NAG	G	505	14/15	0.52	0.15	80,81,87,89	0
4	NAG	G	506	14/15	0.54	0.15	84,88,89,89	0
4	NAG	G	509	14/15	0.56	0.13	83,91,94,94	0
4	NAG	G	502	14/15	0.60	0.15	81,83,91,92	0
4	NAG	G	503	14/15	0.70	0.15	61,69,72,75	0
4	NAG	G	501	14/15	0.76	0.14	57,65,70,71	0
4	NAG	G	507	14/15	0.77	0.11	52,56,61,61	0
4	NAG	G	508	14/15	0.83	0.11	61,63,64,64	0
4	NAG	L	301	14/15	0.83	0.14	46,52,66,69	0
5	IMD	L	302	5/5	0.89	0.15	63,63,65,66	0
4	NAG	G	504	14/15	0.92	0.07	37,46,55,56	0

6.5 Other polymers [i](#)

There are no such residues in this entry.