



Full wwPDB EM Validation Report ⓘ

Mar 6, 2026 – 11:24 PM UTC

PDB ID : 3JCA / pdb_00003jca
EMDB ID : EMD-6441
Title : Core model of the Mouse Mammary Tumor Virus intasome
Authors : Lyumkis, D.L.; Ballandras-Colas, A.; Brown, M.; Cook, N.J.; Dewdney, T.G.;
Demeler, B.; Cherepanov, P.; Engelman, A.N.
Deposited on : 2015-11-24
Resolution : 4.80 Å (reported)
Based on initial models : 5CZ2, 5CZ1, 5D7U

This is a Full wwPDB EM Validation Report for a publicly released PDB entry.

We welcome your comments at validation@mail.wwpdb.org

A user guide is available at

<https://www.wwpdb.org/validation/2017/EMValidationReportHelp>
with specific help available everywhere you see the ⓘ symbol.

The types of validation reports are described at

<http://www.wwpdb.org/validation/2017/FAQs#types>.

The following versions of software and data (see [references ⓘ](#)) were used in the production of this report:

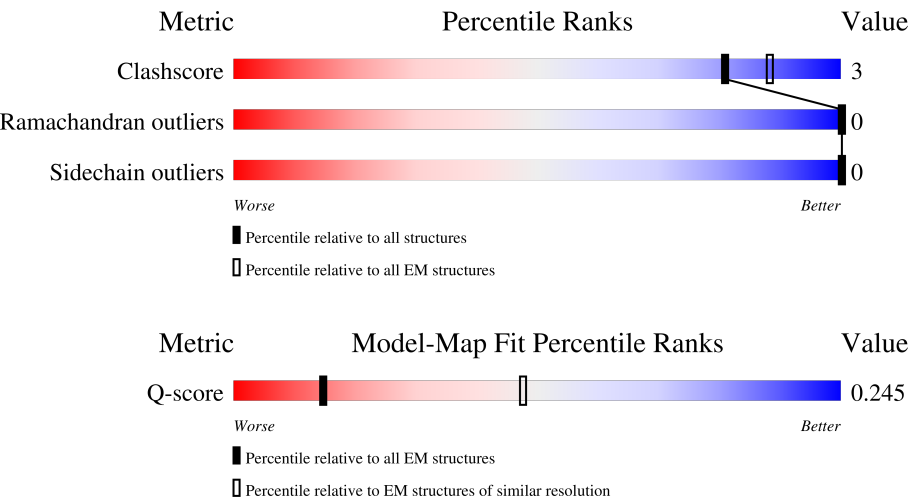
EMDB validation analysis : 0.0.1.dev132
MolProbity : 4-5-2 with Phenix2.0
Percentile statistics : 20250101.v01 (using entries in the PDB archive January 1st 2025)
EM percentile statistics : 202505.v01 (Using data in the EMDB archive up until May 2025)
MapQ : 1.9.13
Ideal geometry (proteins) : Engh & Huber (2001)
Ideal geometry (DNA, RNA) : Parkinson et al. (1996)
Validation Pipeline (wwPDB-VP) : 2.49

1 Overall quality at a glance i

The following experimental techniques were used to determine the structure:
ELECTRON MICROSCOPY

The reported resolution of this entry is 4.80 Å.

Percentile scores (ranging between 0-100) for global validation metrics of the entry are shown in the following graphic. The table shows the number of entries on which the scores are based.



Metric	Whole archive (#Entries)	EM structures (#Entries)	Similar EM resolution (#Entries, resolution range(Å))
Clashscore	229148	23984	-
Ramachandran outliers	224038	23583	-
Sidechain outliers	223484	23102	-
Q-score	-	25397	1575 (4.30 - 5.30)

The table below summarises the geometric issues observed across the polymeric chains and their fit to the map. The red, orange, yellow and green segments of the bar indicate the fraction of residues that contain outliers for ≥ 3 , 2, 1 and 0 types of geometric quality criteria respectively. A grey segment represents the fraction of residues that are not modelled. The numeric value for each fraction is indicated below the corresponding segment, with a dot representing fractions $\leq 5\%$. The upper red bar (where present) indicates the fraction of residues that have poor fit to the EM map (all-atom inclusion $< 40\%$). The numeric value is given above the bar.

Mol	Chain	Length	Quality of chain
1	A	265	
1	B	265	
1	E	265	
1	F	265	

Continued on next page...

Continued from previous page...

Mol	Chain	Length	Quality of chain
2	C	49	<div> <div>41%</div> <div>90%</div> <div>10%</div> </div>
2	D	49	<div> <div>24%</div> <div>92%</div> <div>8%</div> </div>
2	G	49	<div> <div>39%</div> <div>90%</div> <div>10%</div> </div>
2	H	49	<div> <div>27%</div> <div>88%</div> <div>12%</div> </div>
3	I	22	<div> <div>9%</div> <div>73%</div> <div>23%</div> <div>5%</div> </div>
3	K	22	<div> <div>9%</div> <div>77%</div> <div>18%</div> <div>5%</div> </div>
4	J	20	<div> <div>10%</div> <div>85%</div> <div>10%</div> <div>5%</div> </div>
4	L	20	<div> <div>10%</div> <div>90%</div> <div>5%</div> <div>5%</div> </div>

2 Entry composition [i](#)

There are 5 unique types of molecules in this entry. The entry contains 11466 atoms, of which 0 are hydrogens and 0 are deuteriums.

In the tables below, the AltConf column contains the number of residues with at least one atom in alternate conformation and the Trace column contains the number of residues modelled with at most 2 atoms.

- Molecule 1 is a protein called Integrase.

Mol	Chain	Residues	Atoms					AltConf	Trace
1	A	262	Total	C	N	O	S	0	0
			2096	1340	383	365	8		
1	B	253	Total	C	N	O	S	0	0
			2031	1299	370	354	8		
1	E	262	Total	C	N	O	S	0	0
			2096	1340	383	365	8		
1	F	253	Total	C	N	O	S	0	0
			2031	1299	370	354	8		

- Molecule 2 is a protein called Integrase.

Mol	Chain	Residues	Atoms					AltConf	Trace
2	C	49	Total	C	N	O	S	0	0
			393	259	64	67	3		
2	D	49	Total	C	N	O	S	0	0
			393	259	64	67	3		
2	G	49	Total	C	N	O	S	0	0
			393	259	64	67	3		
2	H	49	Total	C	N	O	S	0	0
			393	259	64	67	3		

- Molecule 3 is a DNA chain called 5'-D(*AP*AP*TP*GP*CP*CP*GP*CP*AP*GP*TP*C
P*GP*GP*CP*CP*GP*AP*CP*CP*TP*G)-3'.

Mol	Chain	Residues	Atoms					AltConf	Trace
3	I	21	Total	C	N	O	P	0	0
			425	202	80	123	20		
3	K	21	Total	C	N	O	P	0	0
			425	202	80	123	20		

- Molecule 4 is a DNA chain called 5'-D(*CP*AP*GP*GP*TP*CP*GP*GP*CP*CP*GP*A
P*CP*TP*GP*CP*GP*GP*CP*A)-3'.

Mol	Chain	Residues	Atoms					AltConf	Trace
4	J	19	Total	C	N	O	P	0	0
			393	184	77	113	19		
4	L	19	Total	C	N	O	P	0	0
			393	184	77	113	19		

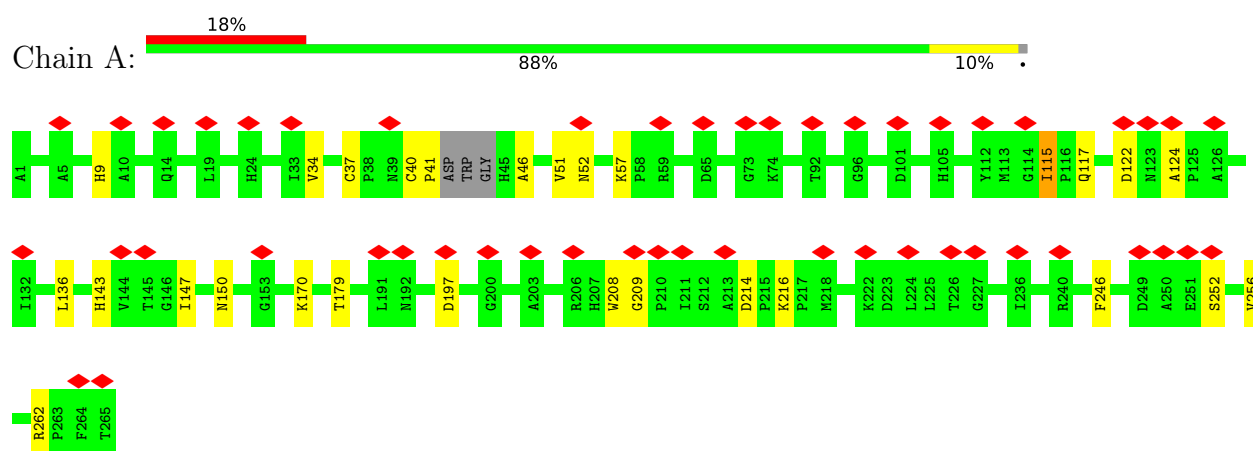
- Molecule 5 is ZINC ION (CCD ID: ZN) (formula: Zn).

Mol	Chain	Residues	Atoms		AltConf
5	A	1	Total	Zn	0
			1	1	
5	B	1	Total	Zn	0
			1	1	
5	E	1	Total	Zn	0
			1	1	
5	F	1	Total	Zn	0
			1	1	

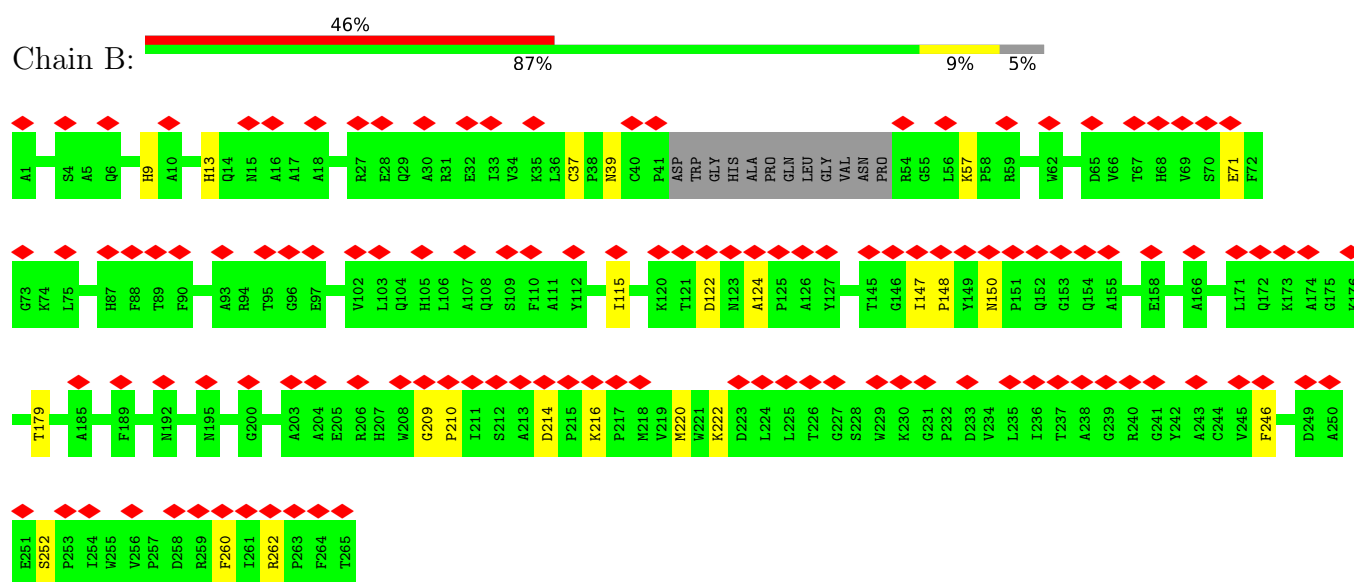
3 Residue-property plots

These plots are drawn for all protein, RNA, DNA and oligosaccharide chains in the entry. The first graphic for a chain summarises the proportions of the various outlier classes displayed in the second graphic. The second graphic shows the sequence view annotated by issues in geometry and atom inclusion in map density. Residues are color-coded according to the number of geometric quality criteria for which they contain at least one outlier: green = 0, yellow = 1, orange = 2 and red = 3 or more. A red diamond above a residue indicates a poor fit to the EM map for this residue (all-atom inclusion < 40%). Stretches of 2 or more consecutive residues without any outlier are shown as a green connector. Residues present in the sample, but not in the model, are shown in grey.

• Molecule 1: Integrase

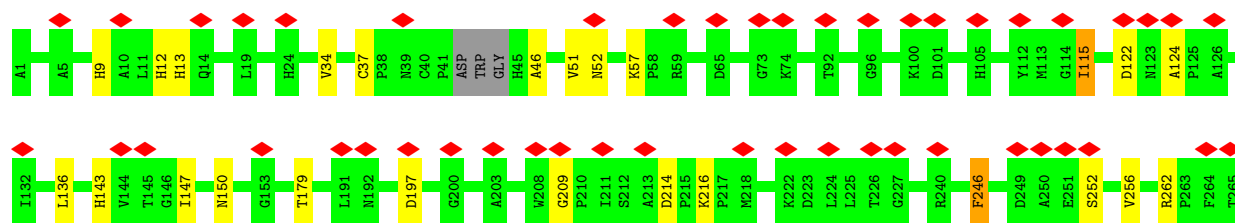


• Molecule 1: Integrase

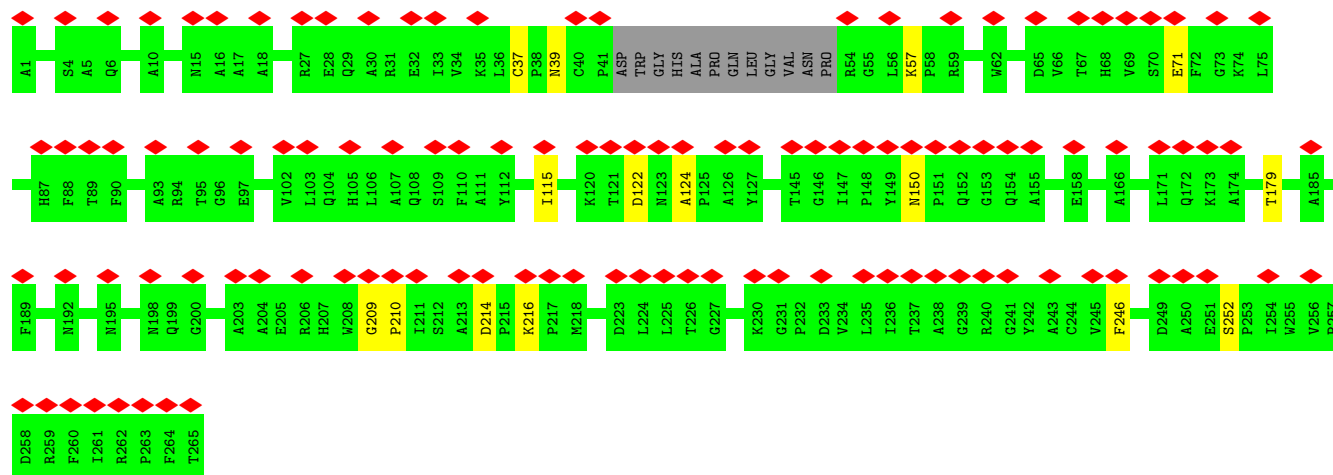
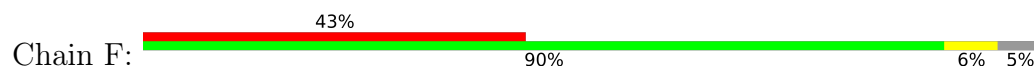


• Molecule 1: Integrase

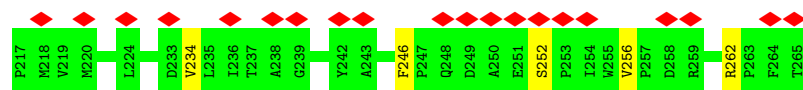
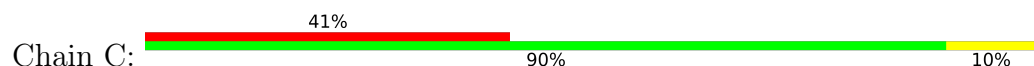




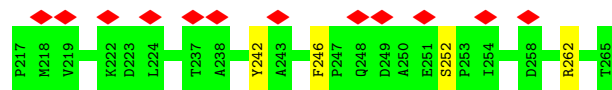
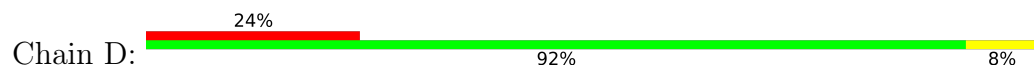
• Molecule 1: Integrase



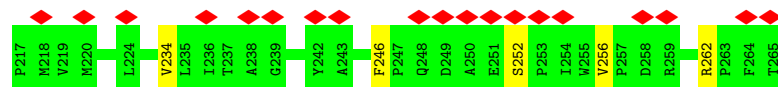
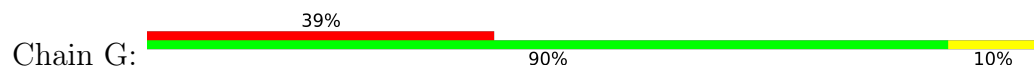
• Molecule 2: Integrase



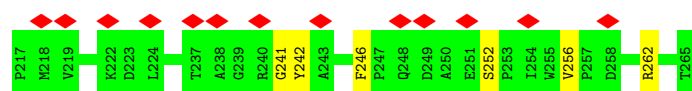
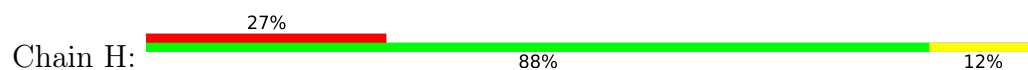
• Molecule 2: Integrase



• Molecule 2: Integrase



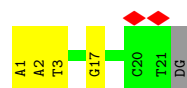
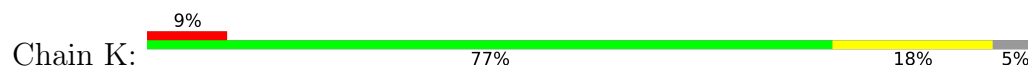
• Molecule 2: Integrase



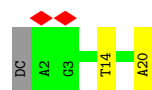
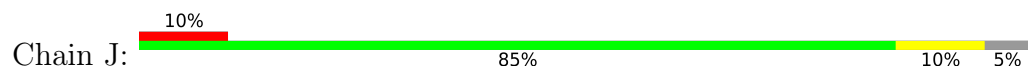
• Molecule 3: 5'-D(*AP*AP*TP*GP*CP*CP*GP*CP*AP*GP*TP*CP*GP*GP*CP*CP*GP*A
P*CP*CP*TP*G)-3'



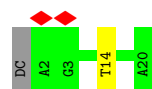
• Molecule 3: 5'-D(*AP*AP*TP*GP*CP*CP*GP*CP*AP*GP*TP*CP*GP*GP*CP*CP*GP*A
P*CP*CP*TP*G)-3'



• Molecule 4: 5'-D(*CP*AP*GP*GP*TP*CP*GP*GP*CP*CP*GP*AP*CP*TP*GP*CP*GP*G
P*CP*A)-3'



• Molecule 4: 5'-D(*CP*AP*GP*GP*TP*CP*GP*GP*CP*CP*GP*AP*CP*TP*GP*CP*GP*G
P*CP*A)-3'



4 Experimental information

Property	Value	Source
EM reconstruction method	SINGLE PARTICLE	Depositor
Imposed symmetry	POINT, C2	Depositor
Number of particles used	30307	Depositor
Resolution determination method	FSC 0.143 CUT-OFF	Depositor
CTF correction method	each particle	Depositor
Microscope	FEI TITAN KRIOS	Depositor
Voltage (kV)	300	Depositor
Electron dose ($e^-/\text{\AA}^2$)	40	Depositor
Minimum defocus (nm)	1000	Depositor
Maximum defocus (nm)	4000	Depositor
Magnification	38167	Depositor
Image detector	GATAN K2 (4k x 4k)	Depositor
Maximum map value	1.697	Depositor
Minimum map value	-0.734	Depositor
Average map value	0.002	Depositor
Map value standard deviation	0.044	Depositor
Recommended contour level	0.5	Depositor
Map size (\AA)	335.36, 335.36, 335.36	wwPDB
Map dimensions	256, 256, 256	wwPDB
Map angles ($^\circ$)	90.0, 90.0, 90.0	wwPDB
Pixel spacing (\AA)	1.31, 1.31, 1.31	Depositor

5 Model quality

5.1 Standard geometry

Bond lengths and bond angles in the following residue types are not validated in this section: ZN

The Z score for a bond length (or angle) is the number of standard deviations the observed value is removed from the expected value. A bond length (or angle) with $|Z| > 5$ is considered an outlier worth inspection. RMSZ is the root-mean-square of all Z scores of the bond lengths (or angles).

Mol	Chain	Bond lengths		Bond angles	
		RMSZ	# Z >5	RMSZ	# Z >5
1	A	0.78	0/2160	1.22	31/2938 (1.1%)
1	B	0.74	0/2092	1.17	20/2843 (0.7%)
1	E	0.77	0/2160	1.20	32/2938 (1.1%)
1	F	0.75	0/2092	1.18	20/2843 (0.7%)
2	C	0.80	0/408	1.34	8/556 (1.4%)
2	D	0.81	0/408	1.31	6/556 (1.1%)
2	G	0.81	0/408	1.31	8/556 (1.4%)
2	H	0.81	0/408	1.32	8/556 (1.4%)
3	I	0.48	0/476	0.83	0/732
3	K	0.48	0/476	0.82	0/732
4	J	0.49	0/441	0.86	0/679
4	L	0.49	0/441	0.86	0/679
All	All	0.73	0/11970	1.16	133/16608 (0.8%)

There are no bond length outliers.

All (133) bond angle outliers are listed below:

Mol	Chain	Res	Type	Atoms	Z	Observed(°)	Ideal(°)
1	E	246	PHE	CA-C-N	9.94	130.02	119.78
1	E	246	PHE	C-N-CA	9.94	130.02	119.78
1	A	246	PHE	CA-C-N	9.85	129.93	119.78
1	A	246	PHE	C-N-CA	9.85	129.93	119.78
1	F	246	PHE	CA-C-N	8.99	129.04	119.78
1	F	246	PHE	C-N-CA	8.99	129.04	119.78
1	B	246	PHE	CA-C-N	8.94	128.99	119.78
1	B	246	PHE	C-N-CA	8.94	128.99	119.78
1	E	216	LYS	CA-C-N	8.79	128.93	120.31
1	E	216	LYS	C-N-CA	8.79	128.93	120.31
1	F	37	CYS	CA-C-N	8.77	128.41	119.82
1	F	37	CYS	C-N-CA	8.77	128.41	119.82

Continued on next page...

Continued from previous page...

Mol	Chain	Res	Type	Atoms	Z	Observed(°)	Ideal(°)
1	A	216	LYS	CA-C-N	8.67	128.81	120.31
1	A	216	LYS	C-N-CA	8.67	128.81	120.31
1	B	37	CYS	CA-C-N	8.66	128.31	119.82
1	B	37	CYS	C-N-CA	8.66	128.31	119.82
1	A	124	ALA	CA-C-N	8.62	128.35	119.56
1	A	124	ALA	C-N-CA	8.62	128.35	119.56
1	E	124	ALA	CA-C-N	8.53	128.26	119.56
1	E	124	ALA	C-N-CA	8.53	128.26	119.56
1	B	57	LYS	CA-C-N	8.47	128.61	120.31
1	B	57	LYS	C-N-CA	8.47	128.61	120.31
1	F	57	LYS	CA-C-N	8.31	128.45	120.31
1	F	57	LYS	C-N-CA	8.31	128.45	120.31
1	A	46	ALA	CA-C-N	8.19	128.14	120.03
1	A	46	ALA	C-N-CA	8.19	128.14	120.03
1	B	124	ALA	CA-C-N	8.12	128.88	119.47
1	B	124	ALA	C-N-CA	8.12	128.88	119.47
1	F	124	ALA	CA-C-N	8.10	128.87	119.47
1	F	124	ALA	C-N-CA	8.10	128.87	119.47
1	F	179	THR	CA-C-N	7.95	128.02	119.28
1	F	179	THR	C-N-CA	7.95	128.02	119.28
1	B	179	THR	CA-C-N	7.89	127.96	119.28
1	B	179	THR	C-N-CA	7.89	127.96	119.28
1	A	209	GLY	CA-C-N	7.80	127.79	119.76
1	A	209	GLY	C-N-CA	7.80	127.79	119.76
1	F	214	ASP	CA-C-N	7.76	127.94	119.87
1	F	214	ASP	C-N-CA	7.76	127.94	119.87
2	G	262	ARG	CA-C-N	7.56	127.60	119.89
2	G	262	ARG	C-N-CA	7.56	127.60	119.89
1	F	252	SER	CA-C-N	7.54	127.54	119.78
1	F	252	SER	C-N-CA	7.54	127.54	119.78
2	C	262	ARG	CA-C-N	7.51	127.55	119.89
2	C	262	ARG	C-N-CA	7.51	127.55	119.89
1	A	179	THR	CA-C-N	7.48	127.35	119.05
1	A	179	THR	C-N-CA	7.48	127.35	119.05
1	E	179	THR	CA-C-N	7.45	127.32	119.05
1	E	179	THR	C-N-CA	7.45	127.32	119.05
1	E	209	GLY	CA-C-N	7.44	127.36	119.85
1	E	209	GLY	C-N-CA	7.44	127.36	119.85
1	E	52	ASN	CA-C-N	7.43	127.34	120.21
1	E	52	ASN	C-N-CA	7.43	127.34	120.21
1	B	252	SER	CA-C-N	7.39	127.39	119.78
1	B	252	SER	C-N-CA	7.39	127.39	119.78

Continued on next page...

Continued from previous page...

Mol	Chain	Res	Type	Atoms	Z	Observed(°)	Ideal(°)
2	C	246	PHE	CA-C-N	7.32	128.99	119.84
2	C	246	PHE	C-N-CA	7.32	128.99	119.84
1	F	115	ILE	CA-C-N	7.32	128.81	120.98
1	F	115	ILE	C-N-CA	7.32	128.81	120.98
1	A	37	CYS	CA-C-N	7.30	126.93	119.56
1	A	37	CYS	C-N-CA	7.30	126.93	119.56
1	B	214	ASP	CA-C-N	7.26	127.88	120.04
1	B	214	ASP	C-N-CA	7.26	127.88	120.04
2	G	246	PHE	CA-C-N	7.25	128.91	119.84
2	G	246	PHE	C-N-CA	7.25	128.91	119.84
1	A	52	ASN	CA-C-N	7.25	127.17	120.21
1	A	52	ASN	C-N-CA	7.25	127.17	120.21
1	B	115	ILE	CA-C-N	7.11	128.72	119.84
1	B	115	ILE	C-N-CA	7.11	128.72	119.84
1	E	37	CYS	CA-C-N	7.10	126.80	119.56
1	E	37	CYS	C-N-CA	7.10	126.80	119.56
1	E	214	ASP	CA-C-N	7.07	126.83	119.76
1	E	214	ASP	C-N-CA	7.07	126.83	119.76
2	H	246	PHE	CA-C-N	7.03	127.20	120.31
2	H	246	PHE	C-N-CA	7.03	127.20	120.31
2	H	256	VAL	CA-C-N	6.98	126.97	119.78
2	H	256	VAL	C-N-CA	6.98	126.97	119.78
1	B	216	LYS	CA-C-N	6.88	127.43	120.14
1	B	216	LYS	C-N-CA	6.88	127.43	120.14
1	F	216	LYS	CA-C-N	6.87	127.42	120.14
1	F	216	LYS	C-N-CA	6.87	127.42	120.14
1	A	214	ASP	CA-C-N	6.84	126.60	119.76
1	A	214	ASP	C-N-CA	6.84	126.60	119.76
2	D	246	PHE	CA-C-N	6.78	126.95	120.31
2	D	246	PHE	C-N-CA	6.78	126.95	120.31
2	D	252	SER	CA-C-N	6.76	126.73	119.76
2	D	252	SER	C-N-CA	6.76	126.73	119.76
1	A	147	ILE	CA-C-N	6.75	126.79	119.90
1	A	147	ILE	C-N-CA	6.75	126.79	119.90
1	E	147	ILE	CA-C-N	6.72	126.76	119.90
1	E	147	ILE	C-N-CA	6.72	126.76	119.90
1	E	57	LYS	CA-C-N	6.68	126.66	119.78
1	E	57	LYS	C-N-CA	6.68	126.66	119.78
1	B	150	ASN	CA-C-N	6.59	128.08	119.84
1	B	150	ASN	C-N-CA	6.59	128.08	119.84
1	A	57	LYS	CA-C-N	6.58	126.56	119.78
1	A	57	LYS	C-N-CA	6.58	126.56	119.78

Continued on next page...

Continued from previous page...

Mol	Chain	Res	Type	Atoms	Z	Observed(°)	Ideal(°)
2	H	252	SER	CA-C-N	6.56	126.54	119.78
2	H	252	SER	C-N-CA	6.56	126.54	119.78
1	A	115	ILE	CA-C-N	6.50	127.96	119.84
1	A	115	ILE	C-N-CA	6.50	127.96	119.84
1	E	46	ALA	CA-C-N	6.49	127.38	120.11
1	E	46	ALA	C-N-CA	6.49	127.38	120.11
2	C	252	SER	CA-C-N	6.47	126.39	119.85
2	C	252	SER	C-N-CA	6.47	126.39	119.85
1	F	150	ASN	CA-C-N	6.46	127.92	119.84
1	F	150	ASN	C-N-CA	6.46	127.92	119.84
2	G	252	SER	CA-C-N	6.37	126.28	119.85
2	G	252	SER	C-N-CA	6.37	126.28	119.85
1	A	252	SER	CA-C-N	6.37	126.32	119.76
1	A	252	SER	C-N-CA	6.37	126.32	119.76
1	E	115	ILE	CA-C-N	6.36	127.72	120.85
1	E	115	ILE	C-N-CA	6.36	127.72	120.85
1	E	252	SER	CA-C-N	6.34	126.30	119.76
1	E	252	SER	C-N-CA	6.34	126.30	119.76
2	H	262	ARG	CA-C-N	6.09	127.46	119.84
2	H	262	ARG	C-N-CA	6.09	127.46	119.84
1	A	262	ARG	CA-C-N	5.96	127.29	119.84
1	A	262	ARG	C-N-CA	5.96	127.29	119.84
1	E	262	ARG	CA-C-N	5.93	127.26	119.84
1	E	262	ARG	C-N-CA	5.93	127.26	119.84
1	E	150	ASN	CA-C-N	5.65	125.32	119.56
1	E	150	ASN	C-N-CA	5.65	125.32	119.56
1	E	256	VAL	CA-C-N	5.39	125.33	119.78
1	E	256	VAL	C-N-CA	5.39	125.33	119.78
1	A	256	VAL	CA-C-N	5.30	125.24	119.78
1	A	256	VAL	C-N-CA	5.30	125.24	119.78
1	A	117	GLN	N-CA-C	-5.26	106.99	113.41
2	D	262	ARG	CA-C-N	5.21	126.35	119.84
2	D	262	ARG	C-N-CA	5.21	126.35	119.84
2	C	256	VAL	CA-C-N	5.06	125.30	119.83
2	C	256	VAL	C-N-CA	5.06	125.30	119.83
2	G	256	VAL	CA-C-N	5.05	125.34	119.93
2	G	256	VAL	C-N-CA	5.05	125.34	119.93

There are no chirality outliers.

There are no planarity outliers.

5.2 Too-close contacts ⓘ

In the following table, the Non-H and H(model) columns list the number of non-hydrogen atoms and hydrogen atoms in the chain respectively. The H(added) column lists the number of hydrogen atoms added and optimized by MolProbity. The Clashes column lists the number of clashes within the asymmetric unit, whereas Symm-Clashes lists symmetry-related clashes.

Mol	Chain	Non-H	H(model)	H(added)	Clashes	Symm-Clashes
1	A	2096	0	2064	12	0
1	B	2031	0	2001	8	0
1	E	2096	0	2064	10	0
1	F	2031	0	2001	4	0
2	C	393	0	386	1	0
2	D	393	0	386	1	0
2	G	393	0	386	1	0
2	H	393	0	386	2	0
3	I	425	0	236	7	0
3	K	425	0	236	7	0
4	J	393	0	212	3	0
4	L	393	0	212	2	0
5	A	1	0	0	0	0
5	B	1	0	0	0	0
5	E	1	0	0	0	0
5	F	1	0	0	0	0
All	All	11466	0	10570	56	0

The all-atom clashscore is defined as the number of clashes found per 1000 atoms (including hydrogen atoms). The all-atom clashscore for this structure is 3.

All (56) close contacts within the same asymmetric unit are listed below, sorted by their clash magnitude.

Atom-1	Atom-2	Interatomic distance (Å)	Clash overlap (Å)
1:A:9:HIS:CE1	1:A:34:VAL:HG12	2.11	0.86
3:K:1:DA:N3	3:K:1:DA:H3'	1.99	0.76
1:E:9:HIS:CE1	1:E:34:VAL:HG12	2.21	0.75
3:I:1:DA:H3'	3:I:1:DA:N3	2.02	0.75
3:K:1:DA:H4'	3:K:2:DA:OP1	1.89	0.72
3:I:9:DA:H2'	3:I:9:DA:OP2	1.94	0.66
3:I:1:DA:H4'	3:I:2:DA:OP1	1.98	0.62
4:J:14:DT:O5'	4:J:14:DT:H2'	2.00	0.60
4:L:14:DT:O5'	4:L:14:DT:H2'	2.01	0.60
3:K:2:DA:O5'	3:K:2:DA:C8	2.57	0.57
1:A:208:TRP:O	1:A:208:TRP:HE3	1.87	0.57

Continued on next page...

Continued from previous page...

Atom-1	Atom-2	Interatomic distance (Å)	Clash overlap (Å)
1:A:170:LYS:HB3	1:E:13:HIS:CD2	2.40	0.57
2:D:242:TYR:C	2:D:242:TYR:CD1	2.83	0.57
3:K:3:DT:OP2	3:K:3:DT:H6	1.89	0.56
3:K:1:DA:N3	3:K:1:DA:C3'	2.71	0.54
3:I:1:DA:N3	3:I:1:DA:C3'	2.72	0.52
2:G:234:VAL:HG12	2:G:234:VAL:O	2.10	0.51
1:E:12:HIS:O	1:E:13:HIS:HB2	2.11	0.51
3:I:3:DT:H6	3:I:3:DT:OP2	1.94	0.50
2:C:234:VAL:HG12	2:C:234:VAL:O	2.11	0.49
1:A:122:ASP:OD1	1:A:122:ASP:C	2.56	0.49
1:B:71:GLU:OE1	1:B:71:GLU:N	2.37	0.49
1:E:122:ASP:OD1	1:E:122:ASP:C	2.55	0.48
1:B:209:GLY:N	1:B:210:PRO:CD	2.78	0.47
1:E:197:ASP:OD1	1:E:197:ASP:C	2.57	0.47
3:I:17:DG:O5'	3:I:17:DG:H2'	2.15	0.46
4:J:14:DT:O5'	4:J:14:DT:C2'	2.64	0.46
1:B:147:ILE:N	1:B:148:PRO:HD2	2.30	0.46
1:A:51:VAL:O	1:A:51:VAL:HG13	2.16	0.46
1:A:208:TRP:CE3	1:A:208:TRP:C	2.93	0.46
1:F:71:GLU:OE1	1:F:71:GLU:N	2.37	0.46
2:H:242:TYR:CD1	2:H:242:TYR:C	2.94	0.45
1:A:40:CYS:O	1:A:41:PRO:C	2.59	0.45
3:K:17:DG:O5'	3:K:17:DG:H2'	2.17	0.45
1:E:115:ILE:O	1:E:115:ILE:HG23	2.17	0.45
1:F:39:ASN:OD1	1:F:39:ASN:C	2.58	0.45
1:F:209:GLY:N	1:F:210:PRO:CD	2.80	0.45
1:B:39:ASN:OD1	1:B:39:ASN:C	2.58	0.44
1:A:115:ILE:O	1:A:115:ILE:HG23	2.18	0.44
1:E:51:VAL:O	1:E:51:VAL:HG13	2.16	0.44
1:E:9:HIS:NE2	1:E:34:VAL:HA	2.33	0.44
1:A:150:ASN:OD1	1:A:150:ASN:C	2.61	0.44
1:A:197:ASP:OD1	1:A:197:ASP:C	2.60	0.43
4:J:20:DA:OP1	4:J:20:DA:H4'	2.18	0.43
4:L:14:DT:O5'	4:L:14:DT:C2'	2.64	0.43
1:E:246:PHE:CD1	1:E:246:PHE:C	2.97	0.42
1:A:9:HIS:NE2	1:A:34:VAL:HA	2.34	0.42
1:B:222:LYS:HB3	1:B:260:PHE:HB3	2.02	0.41
1:E:136:LEU:HD13	1:E:143:HIS:HB2	2.01	0.41
1:A:136:LEU:HD13	1:A:143:HIS:HB2	2.02	0.41
1:F:122:ASP:C	1:F:122:ASP:OD1	2.63	0.41
1:B:122:ASP:OD1	1:B:122:ASP:C	2.63	0.41

Continued on next page...

Continued from previous page...

Atom-1	Atom-2	Interatomic distance (Å)	Clash overlap (Å)
2:H:241:GLY:O	3:K:3:DT:C4'	2.70	0.40
3:I:17:DG:O5'	3:I:17:DG:C2'	2.69	0.40
1:B:220:MET:HB2	1:B:262:ARG:HB2	2.02	0.40
1:B:9:HIS:O	1:B:13:HIS:N	2.54	0.40

There are no symmetry-related clashes.

5.3 Torsion angles [i](#)

5.3.1 Protein backbone [i](#)

In the following table, the Percentiles column shows the percent Ramachandran outliers of the chain as a percentile score with respect to all PDB entries followed by that with respect to all EM entries.

The Analysed column shows the number of residues for which the backbone conformation was analysed, and the total number of residues.

Mol	Chain	Analysed	Favoured	Allowed	Outliers	Percentiles	
1	A	258/265 (97%)	246 (95%)	12 (5%)	0	100	100
1	B	249/265 (94%)	231 (93%)	18 (7%)	0	100	100
1	E	258/265 (97%)	243 (94%)	15 (6%)	0	100	100
1	F	249/265 (94%)	232 (93%)	17 (7%)	0	100	100
2	C	47/49 (96%)	39 (83%)	8 (17%)	0	100	100
2	D	47/49 (96%)	43 (92%)	4 (8%)	0	100	100
2	G	47/49 (96%)	39 (83%)	8 (17%)	0	100	100
2	H	47/49 (96%)	42 (89%)	5 (11%)	0	100	100
All	All	1202/1256 (96%)	1115 (93%)	87 (7%)	0	100	100

There are no Ramachandran outliers to report.

5.3.2 Protein sidechains [i](#)

In the following table, the Percentiles column shows the percent sidechain outliers of the chain as a percentile score with respect to all PDB entries followed by that with respect to all EM entries.

The Analysed column shows the number of residues for which the sidechain conformation was

analysed, and the total number of residues.

Mol	Chain	Analysed	Rotameric	Outliers	Percentiles	
1	A	221/223 (99%)	221 (100%)	0	100	100
1	B	214/223 (96%)	214 (100%)	0	100	100
1	E	221/223 (99%)	221 (100%)	0	100	100
1	F	214/223 (96%)	214 (100%)	0	100	100
2	C	42/42 (100%)	42 (100%)	0	100	100
2	D	42/42 (100%)	42 (100%)	0	100	100
2	G	42/42 (100%)	42 (100%)	0	100	100
2	H	42/42 (100%)	42 (100%)	0	100	100
All	All	1038/1060 (98%)	1038 (100%)	0	100	100

There are no protein residues with a non-rotameric sidechain to report.

Sometimes sidechains can be flipped to improve hydrogen bonding and reduce clashes. All (1) such sidechains are listed below:

Mol	Chain	Res	Type
1	E	199	GLN

5.3.3 RNA ⓘ

There are no RNA molecules in this entry.

5.4 Non-standard residues in protein, DNA, RNA chains ⓘ

There are no non-standard protein/DNA/RNA residues in this entry.

5.5 Carbohydrates ⓘ

There are no oligosaccharides in this entry.

5.6 Ligand geometry ⓘ

Of 4 ligands modelled in this entry, 4 are monoatomic - leaving 0 for Mogul analysis.

There are no bond length outliers.

There are no bond angle outliers.

There are no chirality outliers.

There are no torsion outliers.

There are no ring outliers.

No monomer is involved in short contacts.

5.7 Other polymers

There are no such residues in this entry.

5.8 Polymer linkage issues

There are no chain breaks in this entry.

6 Map visualisation [i](#)

This section contains visualisations of the EMDB entry EMD-6441. These allow visual inspection of the internal detail of the map and identification of artifacts.

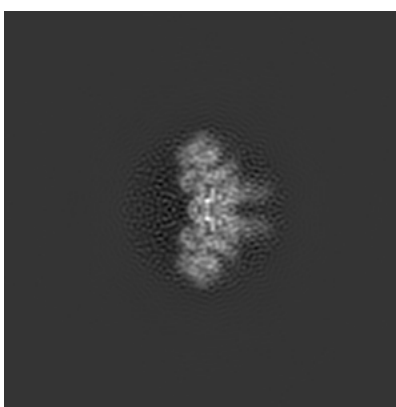
No raw map or half-maps were deposited for this entry and therefore no images, graphs, etc. pertaining to the raw map can be shown.

6.1 Orthogonal projections [i](#)

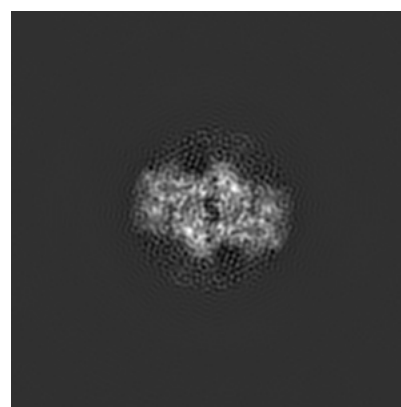
6.1.1 Primary map



X



Y

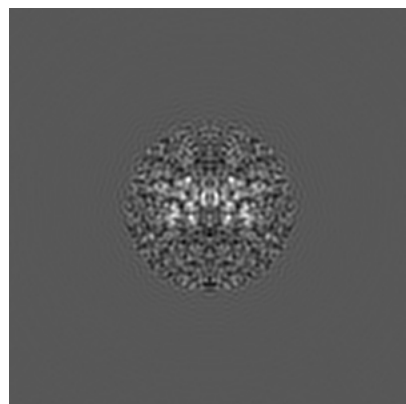


Z

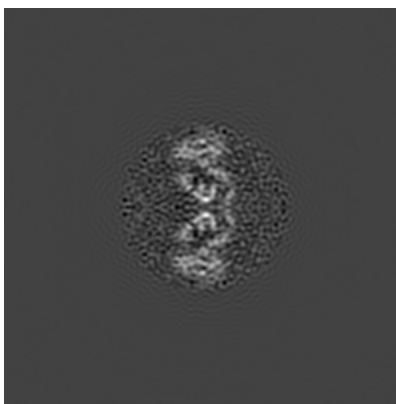
The images above show the map projected in three orthogonal directions.

6.2 Central slices [i](#)

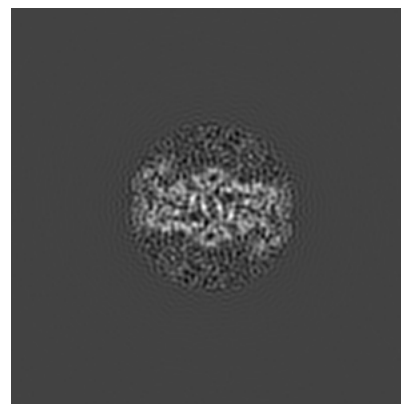
6.2.1 Primary map



X Index: 128



Y Index: 128

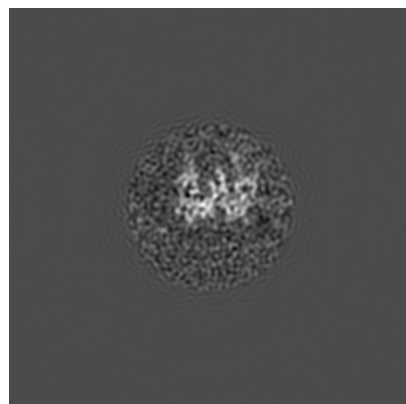


Z Index: 128

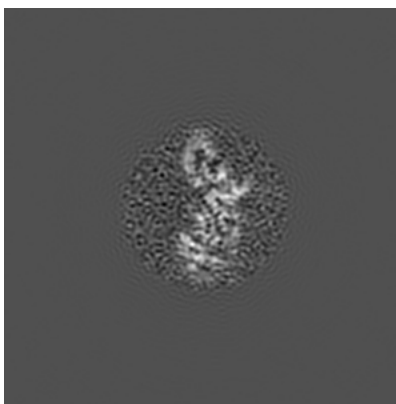
The images above show central slices of the map in three orthogonal directions.

6.3 Largest variance slices [i](#)

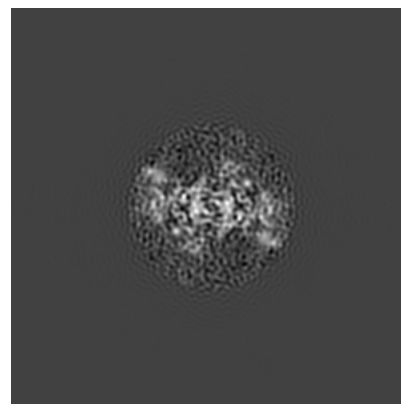
6.3.1 Primary map



X Index: 134



Y Index: 137

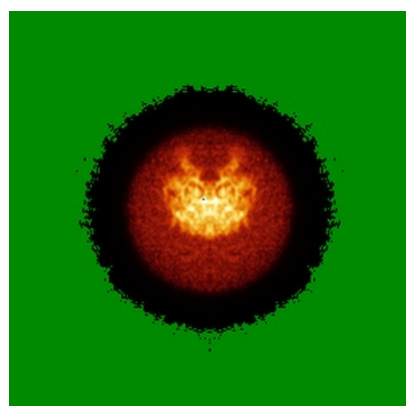


Z Index: 133

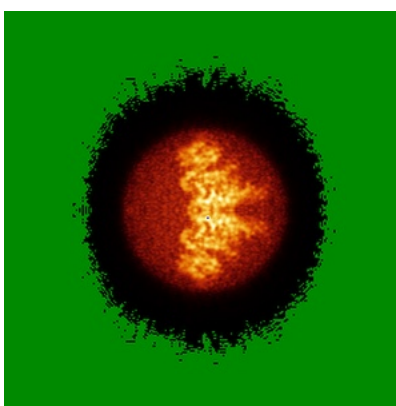
The images above show the largest variance slices of the map in three orthogonal directions.

6.4 Orthogonal standard-deviation projections (False-color) [i](#)

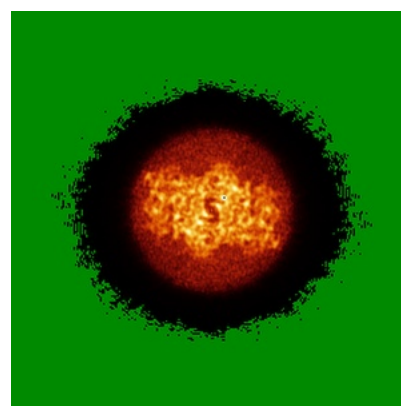
6.4.1 Primary map



X



Y



Z

The images above show the map standard deviation projections with false color in three orthogonal directions. Minimum values are shown in green, max in blue, and dark to light orange shades represent small to large values respectively.

6.5 Orthogonal surface views

This section was not generated.

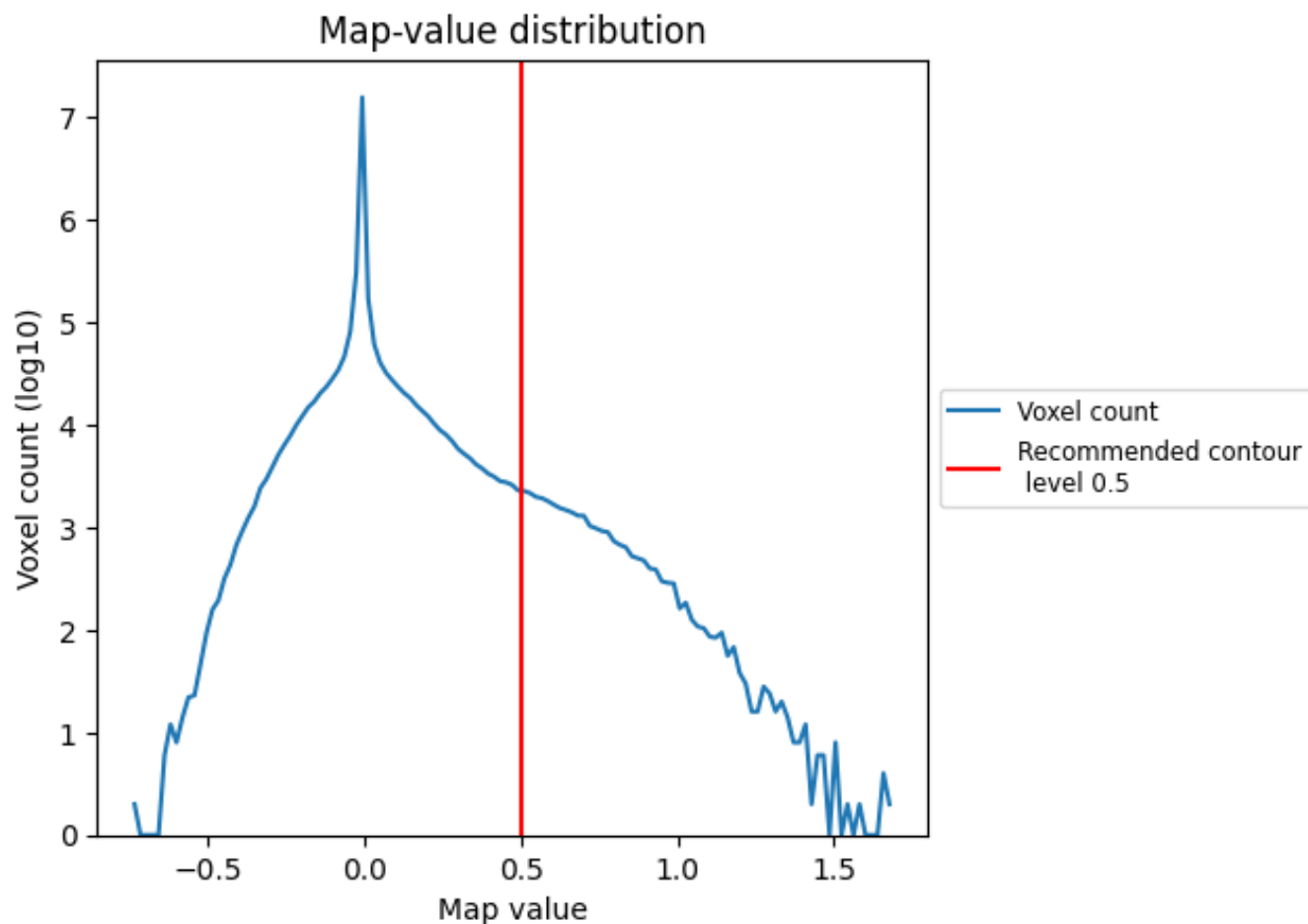
6.6 Mask visualisation

This section was not generated. No masks/segmentation were deposited.

7 Map analysis [i](#)

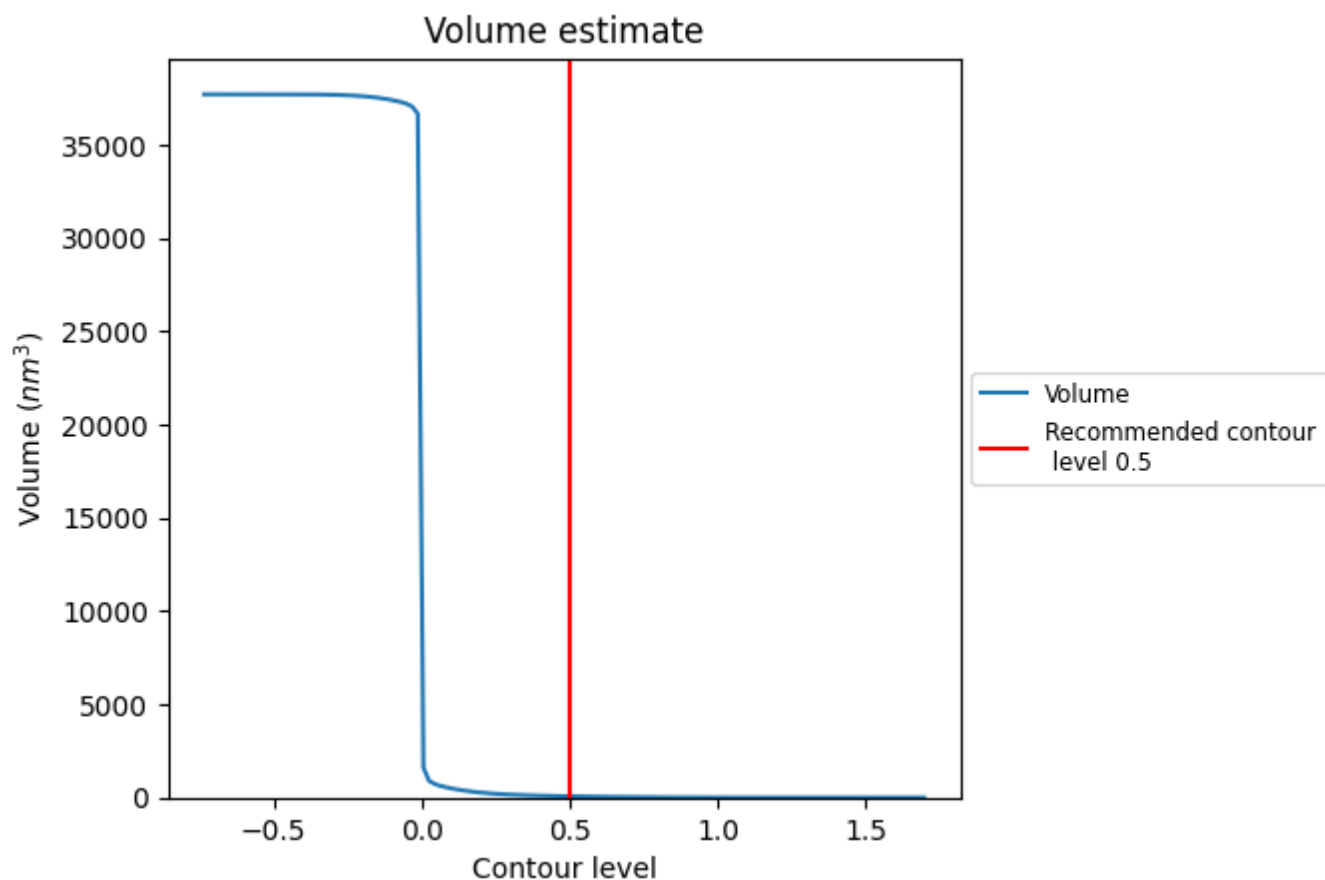
This section contains the results of statistical analysis of the map.

7.1 Map-value distribution [i](#)



The map-value distribution is plotted in 128 intervals along the x-axis. The y-axis is logarithmic. A spike in this graph at zero usually indicates that the volume has been masked.

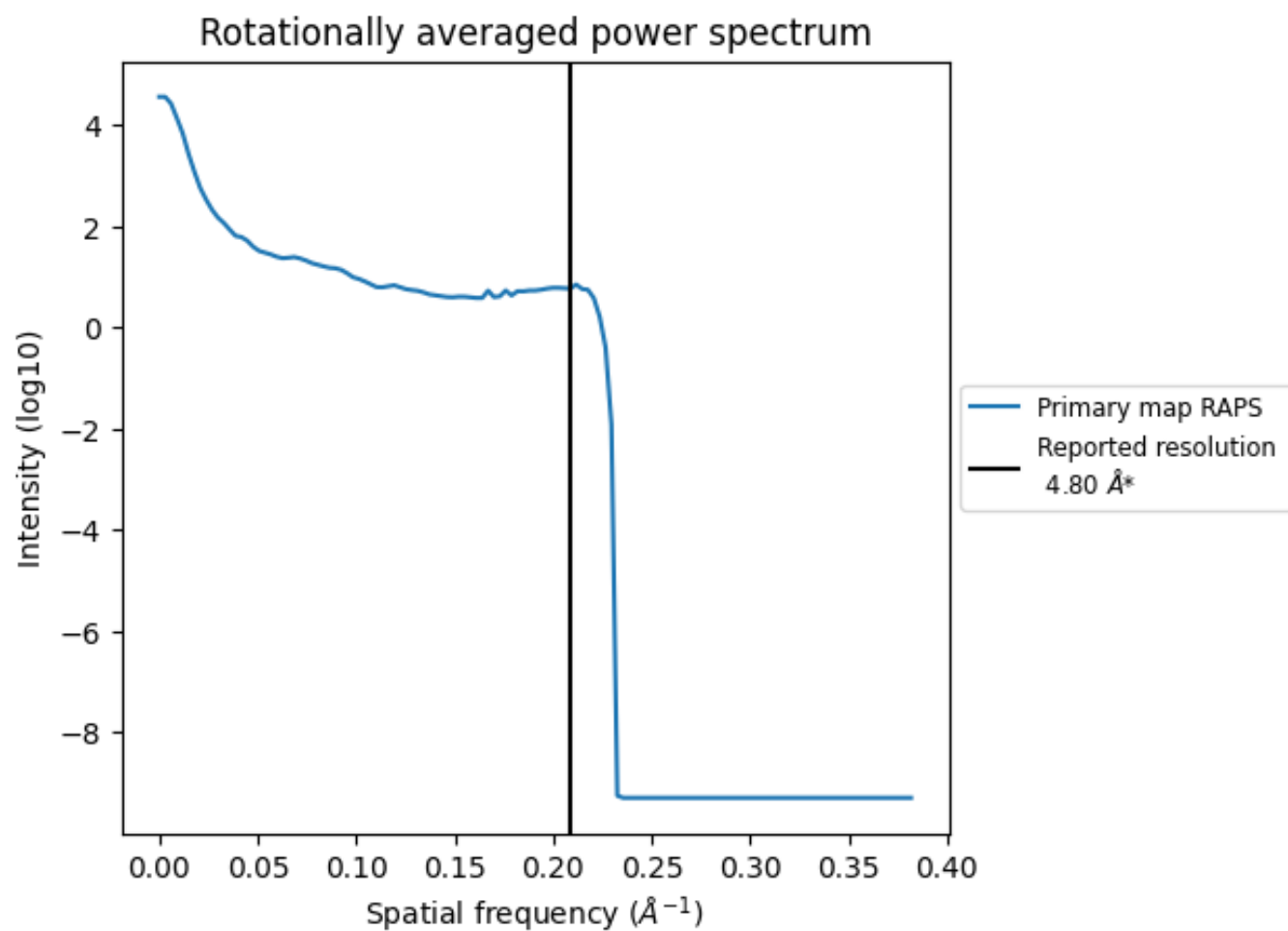
7.2 Volume estimate [i](#)



The volume at the recommended contour level is 68 nm³; this corresponds to an approximate mass of 62 kDa.

The volume estimate graph shows how the enclosed volume varies with the contour level. The recommended contour level is shown as a vertical line and the intersection between the line and the curve gives the volume of the enclosed surface at the given level.

7.3 Rotationally averaged power spectrum ⓘ



*Reported resolution corresponds to spatial frequency of 0.208 Å⁻¹

8 Fourier-Shell correlation ⓘ

This section was not generated. No FSC curve or half-maps provided.

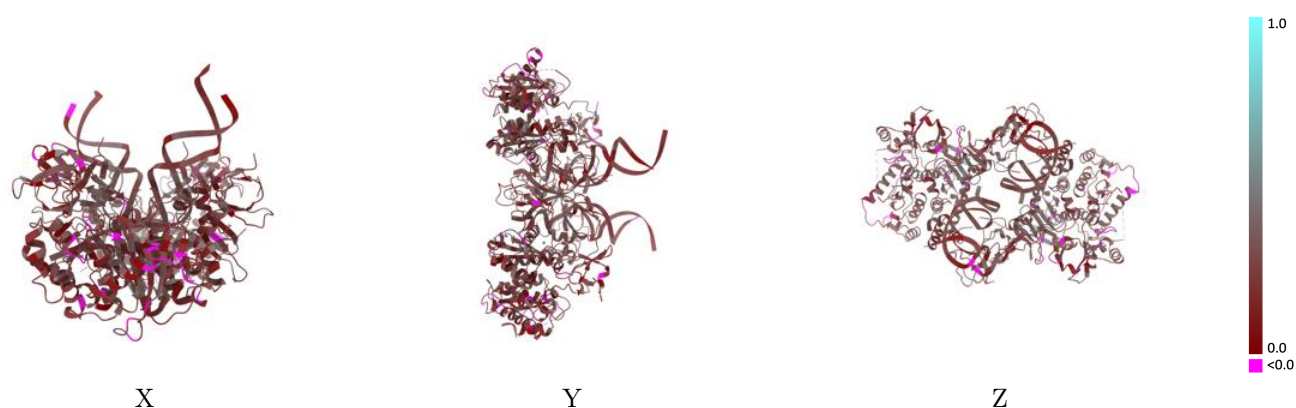
9 Map-model fit [i](#)

This section contains information regarding the fit between EMDB map EMD-6441 and PDB model 3JCA. Per-residue inclusion information can be found in section 3 on page 6.

9.1 Map-model overlay [i](#)

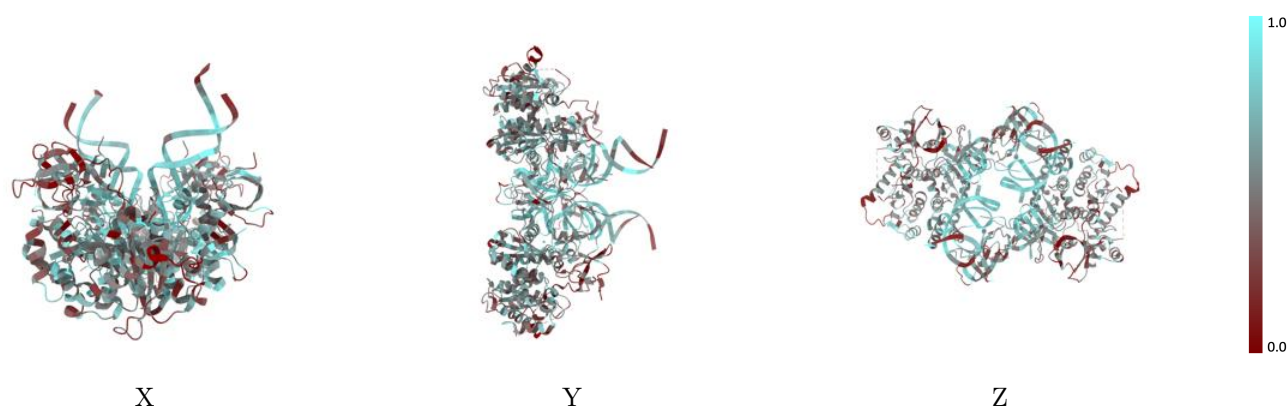
This section was not generated.

9.2 Q-score mapped to coordinate model [i](#)



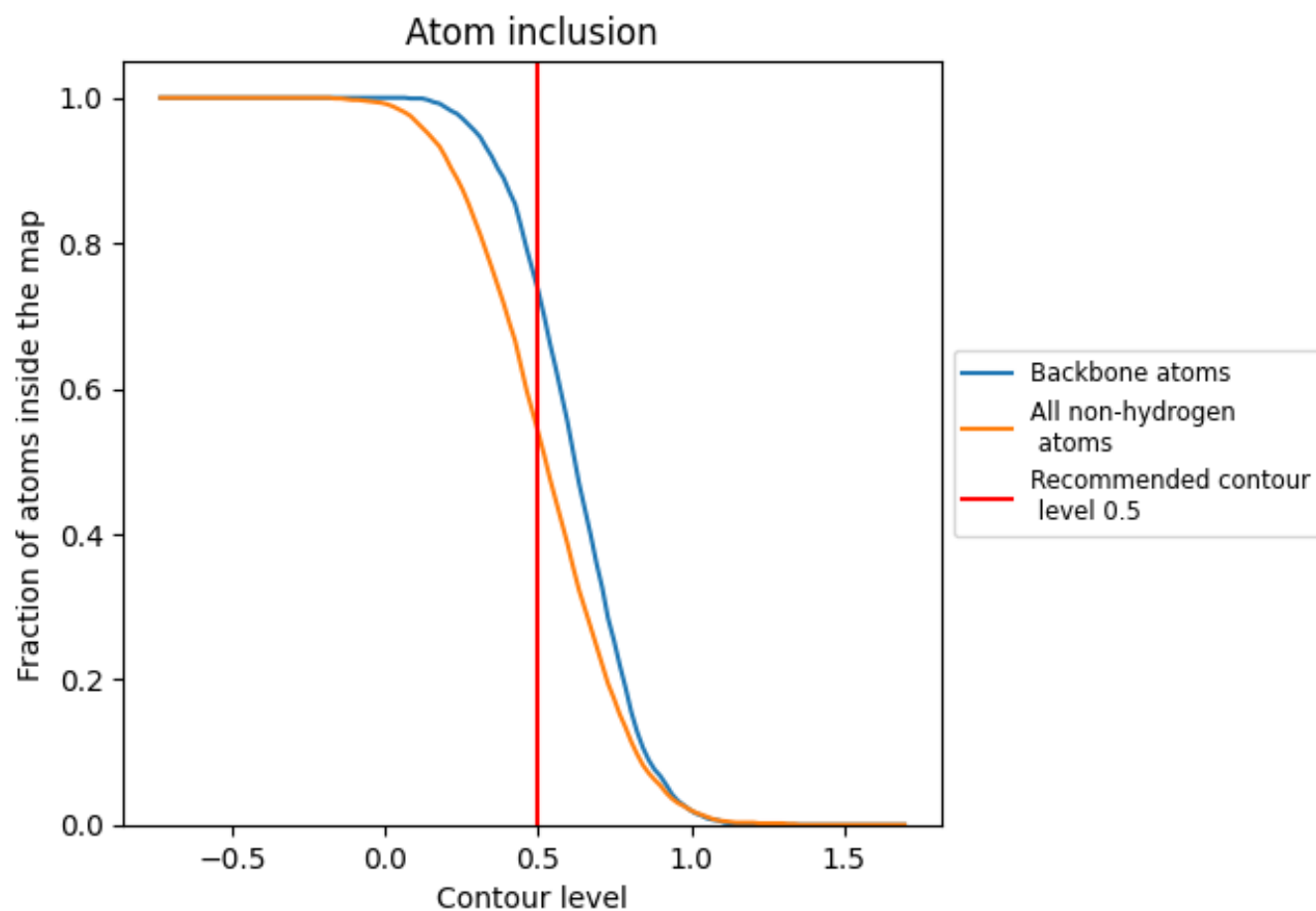
The images above show the model with each residue coloured according to its Q-score. This shows their resolvability in the map with higher Q-score values reflecting better resolvability. Please note: Q-score is calculating the resolvability of atoms, and thus high values are only expected at resolutions at which atoms can be resolved. Low Q-score values may therefore be expected for many entries.

9.3 Atom inclusion mapped to coordinate model [i](#)



The images above show the model with each residue coloured according to its atom inclusion. This shows to what extent they are inside the map at the recommended contour level (0.5).

9.4 Atom inclusion [i](#)



At the recommended contour level, 73% of all backbone atoms, 54% of all non-hydrogen atoms, are inside the map.

9.5 Map-model fit summary ⓘ

The table lists the average atom inclusion at the recommended contour level (0.5) and Q-score for the entire model and for each chain.

Chain	Atom inclusion	Q-score
All	<div></div> 0.5400	<div></div> 0.2450
A	<div></div> 0.5740	<div></div> 0.2640
B	<div></div> 0.4290	<div></div> 0.2130
C	<div></div> 0.5220	<div></div> 0.2440
D	<div></div> 0.5530	<div></div> 0.2680
E	<div></div> 0.5770	<div></div> 0.2650
F	<div></div> 0.4320	<div></div> 0.2160
G	<div></div> 0.5300	<div></div> 0.2460
H	<div></div> 0.5460	<div></div> 0.2750
I	<div></div> 0.7130	<div></div> 0.2710
J	<div></div> 0.7200	<div></div> 0.2510
K	<div></div> 0.7200	<div></div> 0.2720
L	<div></div> 0.7180	<div></div> 0.2520

1.0

0.0

<0.0