



wwPDB X-ray Structure Validation Summary Report ⓘ

Mar 5, 2026 – 06:52 PM UTC

PDB ID : 3ITV / pdb_00003itv
Title : Crystal structure of Pseudomonas stutzeri L-rhamnose isomerase mutant S329K in complex with D-psicose
Authors : Yoshida, H.; Yamaji, M.; Ishii, T.; Izumori, K.; Kamitori, S.
Deposited on : 2009-08-28
Resolution : 1.60 Å(reported)

This is a wwPDB X-ray Structure Validation Summary Report for a publicly released PDB entry.

We welcome your comments at validation@mail.wwpdb.org

A user guide is available at

<https://www.wwpdb.org/validation/2017/XrayValidationReportHelp>

with specific help available everywhere you see the ⓘ symbol.

The types of validation reports are described at

<http://www.wwpdb.org/validation/2017/FAQs#types>.

The following versions of software and data (see [references ⓘ](#)) were used in the production of this report:

MolProbity	:	4-5-2 with Phenix2.0
Mogul	:	2022.3.0, CSD as543be (2022)
Xtriage (Phenix)	:	2.0
EDS	:	3.0
Percentile statistics	:	20250101.v01 (using entries in the PDB archive January 1st 2025)
CCP4	:	9.0.010 (Gargrove)
Density-Fitness	:	1.0.12
Ideal geometry (proteins)	:	Engh & Huber (2001)
Ideal geometry (DNA, RNA)	:	Parkinson et al. (1996)
Validation Pipeline (wwPDB-VP)	:	2.49

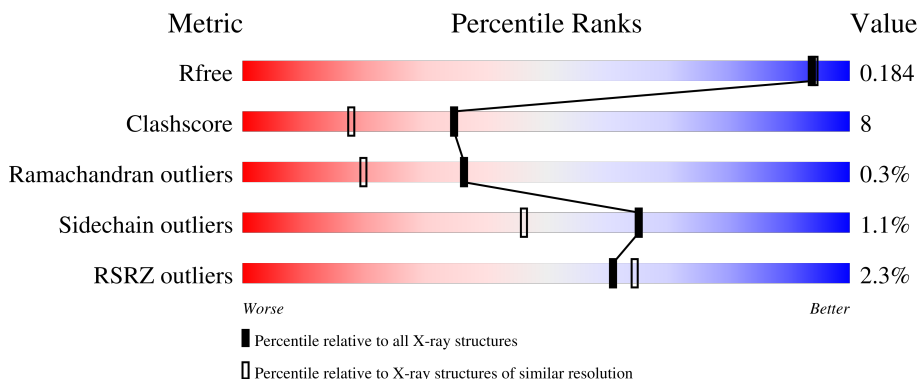
1 Overall quality at a glance

The following experimental techniques were used to determine the structure:

X-RAY DIFFRACTION

The reported resolution of this entry is 1.60 Å.

Percentile scores (ranging between 0-100) for global validation metrics of the entry are shown in the following graphic. The table shows the number of entries on which the scores are based.



Metric	Whole archive (#Entries)	Similar resolution (#Entries, resolution range(Å))
R_{free}	180053	4673 (1.60-1.60)
Clashscore	190562	4931 (1.60-1.60)
Ramachandran outliers	187476	4831 (1.60-1.60)
Sidechain outliers	187428	4830 (1.60-1.60)
RSRZ outliers	180081	4672 (1.60-1.60)

The table below summarises the geometric issues observed across the polymeric chains and their fit to the electron density. The red, orange, yellow and green segments of the lower bar indicate the fraction of residues that contain outliers for ≥ 3 , 2, 1 and 0 types of geometric quality criteria respectively. A grey segment represents the fraction of residues that are not modelled. The numeric value for each fraction is indicated below the corresponding segment, with a dot representing fractions $\leq 5\%$. The upper red bar (where present) indicates the fraction of residues that have poor fit to the electron density. The numeric value is given above the bar.

Mol	Chain	Length	Quality of chain
1	A	438	<div> <div>0%</div> <div>83%</div> <div>13%</div> <div>•</div> </div>
1	B	438	<div> <div>2%</div> <div>82%</div> <div>14%</div> <div>•</div> </div>
1	C	438	<div> <div>4%</div> <div>83%</div> <div>14%</div> <div>•</div> </div>
1	D	438	<div> <div>2%</div> <div>81%</div> <div>14%</div> <div>5%</div> </div>

2 Entry composition

There are 4 unique types of molecules in this entry. The entry contains 15210 atoms, of which 0 are hydrogens and 0 are deuteriums.

In the tables below, the ZeroOcc column contains the number of atoms modelled with zero occupancy, the AltConf column contains the number of residues with at least one atom in alternate conformation and the Trace column contains the number of residues modelled with at most 2 atoms.

- Molecule 1 is a protein called L-rhamnose isomerase.

Mol	Chain	Residues	Atoms					ZeroOcc	AltConf	Trace
1	A	421	Total	C	N	O	S	0	0	0
			3263	2051	585	618	9			
1	B	420	Total	C	N	O	S	0	0	0
			3258	2048	584	617	9			
1	C	426	Total	C	N	O	S	0	0	0
			3287	2065	590	623	9			
1	D	418	Total	C	N	O	S	0	0	0
			3245	2040	582	614	9			

There are 40 discrepancies between the modelled and reference sequences:

Chain	Residue	Modelled	Actual	Comment	Reference
A	150	ASN	ASP	engineered mutation	UNP Q75WH8
A	329	LYS	SER	engineered mutation	UNP Q75WH8
A	431	GLY	-	expression tag	UNP Q75WH8
A	432	SER	-	expression tag	UNP Q75WH8
A	433	HIS	-	expression tag	UNP Q75WH8
A	434	HIS	-	expression tag	UNP Q75WH8
A	435	HIS	-	expression tag	UNP Q75WH8
A	436	HIS	-	expression tag	UNP Q75WH8
A	437	HIS	-	expression tag	UNP Q75WH8
A	438	HIS	-	expression tag	UNP Q75WH8
B	150	ASN	ASP	engineered mutation	UNP Q75WH8
B	329	LYS	SER	engineered mutation	UNP Q75WH8
B	431	GLY	-	expression tag	UNP Q75WH8
B	432	SER	-	expression tag	UNP Q75WH8
B	433	HIS	-	expression tag	UNP Q75WH8
B	434	HIS	-	expression tag	UNP Q75WH8
B	435	HIS	-	expression tag	UNP Q75WH8
B	436	HIS	-	expression tag	UNP Q75WH8
B	437	HIS	-	expression tag	UNP Q75WH8
B	438	HIS	-	expression tag	UNP Q75WH8
C	150	ASN	ASP	engineered mutation	UNP Q75WH8

Continued on next page...

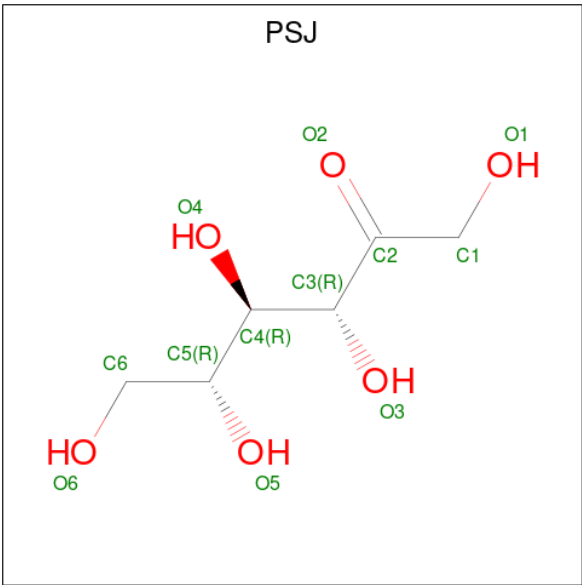
Continued from previous page...

Chain	Residue	Modelled	Actual	Comment	Reference
C	329	LYS	SER	engineered mutation	UNP Q75WH8
C	431	GLY	-	expression tag	UNP Q75WH8
C	432	SER	-	expression tag	UNP Q75WH8
C	433	HIS	-	expression tag	UNP Q75WH8
C	434	HIS	-	expression tag	UNP Q75WH8
C	435	HIS	-	expression tag	UNP Q75WH8
C	436	HIS	-	expression tag	UNP Q75WH8
C	437	HIS	-	expression tag	UNP Q75WH8
C	438	HIS	-	expression tag	UNP Q75WH8
D	150	ASN	ASP	engineered mutation	UNP Q75WH8
D	329	LYS	SER	engineered mutation	UNP Q75WH8
D	431	GLY	-	expression tag	UNP Q75WH8
D	432	SER	-	expression tag	UNP Q75WH8
D	433	HIS	-	expression tag	UNP Q75WH8
D	434	HIS	-	expression tag	UNP Q75WH8
D	435	HIS	-	expression tag	UNP Q75WH8
D	436	HIS	-	expression tag	UNP Q75WH8
D	437	HIS	-	expression tag	UNP Q75WH8
D	438	HIS	-	expression tag	UNP Q75WH8

- Molecule 2 is MANGANESE (II) ION (CCD ID: MN) (formula: Mn).

Mol	Chain	Residues	Atoms	ZeroOcc	AltConf
2	A	2	Total Mn 2 2	0	0
2	B	2	Total Mn 2 2	0	0
2	C	2	Total Mn 2 2	0	0
2	D	2	Total Mn 2 2	0	0

- Molecule 3 is D-psicose (CCD ID: PSJ) (formula: C₆H₁₂O₆).



Mol	Chain	Residues	Atoms			ZeroOcc	AltConf
3	A	1	Total	C	O	0	0
			12	6	6		
3	B	1	Total	C	O	0	0
			12	6	6		
3	C	1	Total	C	O	0	0
			12	6	6		
3	D	1	Total	C	O	0	0
			12	6	6		

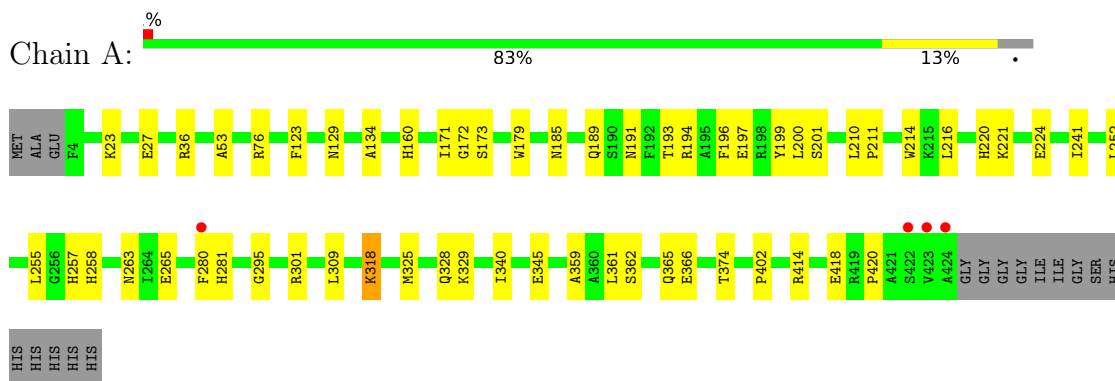
- Molecule 4 is water.

Mol	Chain	Residues	Atoms		ZeroOcc	AltConf
4	A	523	Total	O	0	0
			523	523		
4	B	547	Total	O	0	0
			547	547		
4	C	501	Total	O	0	0
			501	501		
4	D	530	Total	O	0	0
			530	530		

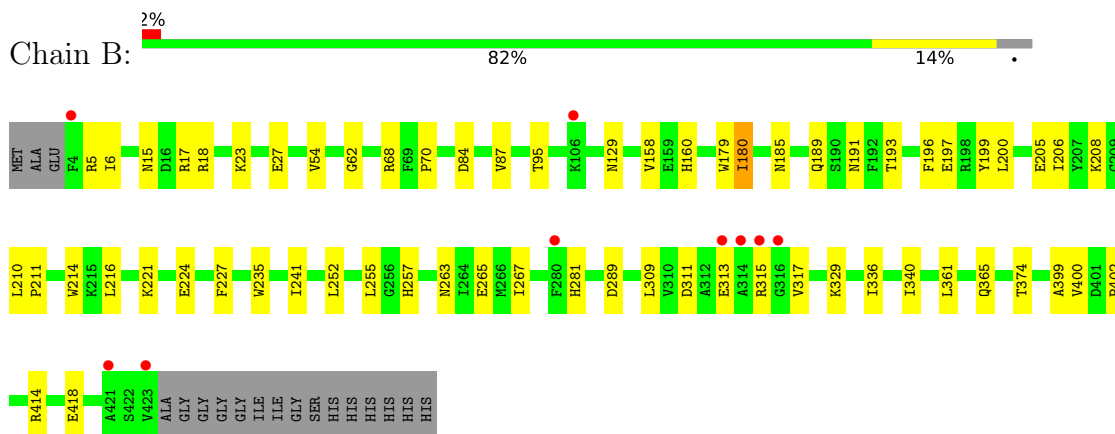
3 Residue-property plots [i](#)

These plots are drawn for all protein, RNA, DNA and oligosaccharide chains in the entry. The first graphic for a chain summarises the proportions of the various outlier classes displayed in the second graphic. The second graphic shows the sequence view annotated by issues in geometry and electron density. Residues are color-coded according to the number of geometric quality criteria for which they contain at least one outlier: green = 0, yellow = 1, orange = 2 and red = 3 or more. A red dot above a residue indicates a poor fit to the electron density ($RSRZ > 2$). Stretches of 2 or more consecutive residues without any outlier are shown as a green connector. Residues present in the sample, but not in the model, are shown in grey.

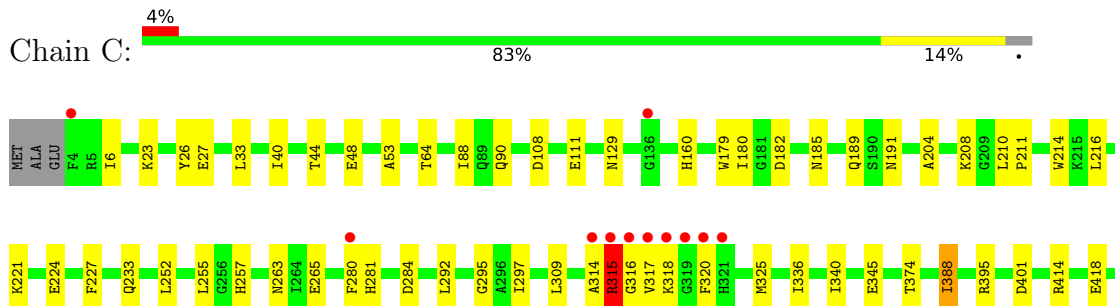
- Molecule 1: L-rhamnose isomerase

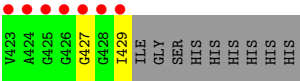


- Molecule 1: L-rhamnose isomerase

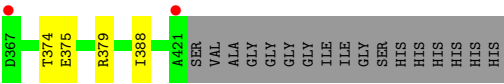
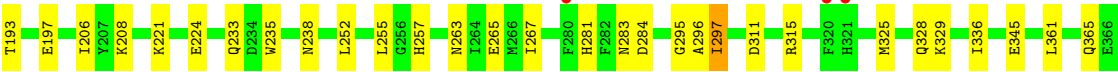
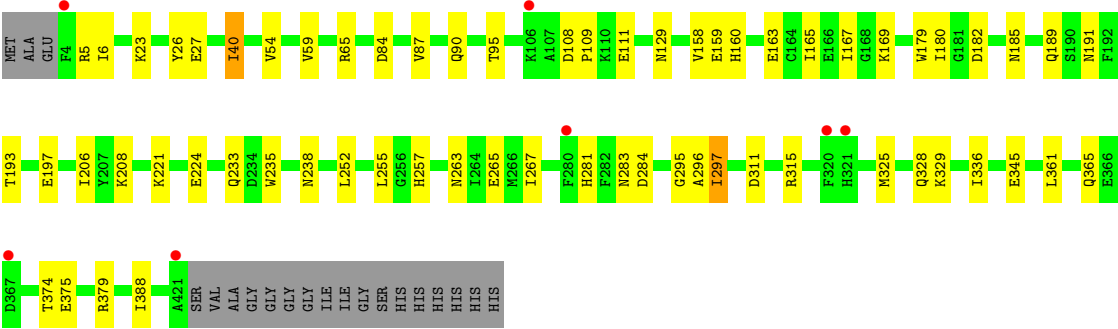
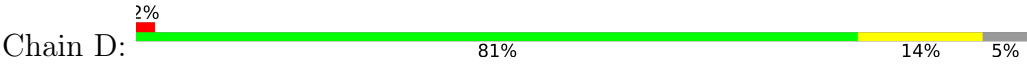


- Molecule 1: L-rhamnose isomerase





● Molecule 1: L-rhamnose isomerase



4 Data and refinement statistics

Property	Value	Source
Space group	P 1 21 1	Depositor
Cell constants a, b, c, α , β , γ	74.63Å 104.64Å 108.42Å 90.00° 107.35° 90.00°	Depositor
Resolution (Å)	46.39 – 1.60 46.39 – 1.60	Depositor EDS
% Data completeness (in resolution range)	98.8 (46.39-1.60) 99.0 (46.39-1.60)	Depositor EDS
R_{merge}	0.04	Depositor
R_{sym}	(Not available)	Depositor
$\langle I/\sigma(I) \rangle$ ¹	8.64 (at 1.60Å)	Xtriage
Refinement program	CNS 1.1	Depositor
R, R_{free}	0.163 , 0.184 0.163 , 0.184	Depositor DCC
R_{free} test set	20554 reflections (9.87%)	wwPDB-VP
Wilson B-factor (Å ²)	9.9	Xtriage
Anisotropy	0.067	Xtriage
Bulk solvent k_{sol} (e/Å ³), B_{sol} (Å ²)	0.38 , 49.8	EDS
L-test for twinning ²	$\langle L \rangle = 0.49$, $\langle L^2 \rangle = 0.32$	Xtriage
Estimated twinning fraction	0.016 for h,-k,-h-l	Xtriage
F_o, F_c correlation	0.96	EDS
Total number of atoms	15210	wwPDB-VP
Average B, all atoms (Å ²)	12.0	wwPDB-VP

Xtriage's analysis on translational NCS is as follows: *The largest off-origin peak in the Patterson function is 4.13% of the height of the origin peak. No significant pseudotranslation is detected.*

¹Intensities estimated from amplitudes.

²Theoretical values of $\langle |L| \rangle$, $\langle L^2 \rangle$ for acentric reflections are 0.5, 0.333 respectively for untwinned datasets, and 0.375, 0.2 for perfectly twinned datasets.

5 Model quality [i](#)

5.1 Standard geometry [i](#)

Bond lengths and bond angles in the following residue types are not validated in this section: MN, PSJ

The Z score for a bond length (or angle) is the number of standard deviations the observed value is removed from the expected value. A bond length (or angle) with $|Z| > 5$ is considered an outlier worth inspection. RMSZ is the root-mean-square of all Z scores of the bond lengths (or angles).

Mol	Chain	Bond lengths		Bond angles	
		RMSZ	$\# Z > 5$	RMSZ	$\# Z > 5$
1	A	0.32	0/3335	0.81	4/4521 (0.1%)
1	B	0.32	0/3330	0.81	3/4514 (0.1%)
1	C	0.32	0/3359	0.80	6/4552 (0.1%)
1	D	0.33	0/3317	0.80	3/4496 (0.1%)
All	All	0.32	0/13341	0.81	16/18083 (0.1%)

There are no bond length outliers.

The worst 5 of 16 bond angle outliers are listed below:

Mol	Chain	Res	Type	Atoms	Z	Observed(°)	Ideal(°)
1	B	255	LEU	N-CA-C	5.78	118.32	111.33
1	D	255	LEU	N-CA-C	5.74	118.28	111.33
1	A	191	ASN	N-CA-C	-5.72	99.21	108.41
1	C	255	LEU	N-CA-C	5.63	118.14	111.33
1	D	233	GLN	N-CA-C	5.56	119.23	112.23

There are no chirality outliers.

There are no planarity outliers.

5.2 Too-close contacts [i](#)

In the following table, the Non-H and H(model) columns list the number of non-hydrogen atoms and hydrogen atoms in the chain respectively. The H(added) column lists the number of hydrogen atoms added and optimized by MolProbity. The Clashes column lists the number of clashes within the asymmetric unit, whereas Symm-Clashes lists symmetry-related clashes.

Mol	Chain	Non-H	H(model)	H(added)	Clashes	Symm-Clashes
1	A	3263	0	3173	43	0
1	B	3258	0	3168	57	0

Continued on next page...

Continued from previous page...

Mol	Chain	Non-H	H(model)	H(added)	Clashes	Symm-Clashes
1	C	3287	0	3196	49	0
1	D	3245	0	3154	45	0
2	A	2	0	0	0	0
2	B	2	0	0	0	0
2	C	2	0	0	0	0
2	D	2	0	0	0	0
3	A	12	0	10	2	0
3	B	12	0	10	2	0
3	C	12	0	10	2	0
3	D	12	0	10	2	0
4	A	523	0	0	3	0
4	B	547	0	0	4	0
4	C	501	0	0	0	0
4	D	530	0	0	2	0
All	All	15210	0	12731	194	0

The all-atom clashscore is defined as the number of clashes found per 1000 atoms (including hydrogen atoms). The all-atom clashscore for this structure is 8.

The worst 5 of 194 close contacts within the same asymmetric unit are listed below, sorted by their clash magnitude.

Atom-1	Atom-2	Interatomic distance (Å)	Clash overlap (Å)
1:C:292:LEU:HD12	1:C:297:ILE:HD11	1.44	0.96
1:C:129:ASN:H	1:C:160:HIS:HE1	1.17	0.92
1:A:196:PHE:HE1	1:A:241:ILE:HD11	1.35	0.92
1:D:284:ASP:HB3	1:D:297:ILE:HD13	1.52	0.89
1:A:129:ASN:H	1:A:160:HIS:HE1	1.20	0.88

There are no symmetry-related clashes.

5.3 Torsion angles [i](#)

5.3.1 Protein backbone [i](#)

In the following table, the Percentiles column shows the percent Ramachandran outliers of the chain as a percentile score with respect to all X-ray entries followed by that with respect to entries of similar resolution.

The Analysed column shows the number of residues for which the backbone conformation was analysed, and the total number of residues.

Mol	Chain	Analysed	Favoured	Allowed	Outliers	Percentiles	
1	A	419/438 (96%)	410 (98%)	8 (2%)	1 (0%)	43	24
1	B	418/438 (95%)	408 (98%)	9 (2%)	1 (0%)	43	24
1	C	424/438 (97%)	409 (96%)	13 (3%)	2 (0%)	24	10
1	D	416/438 (95%)	407 (98%)	8 (2%)	1 (0%)	43	24
All	All	1677/1752 (96%)	1634 (97%)	38 (2%)	5 (0%)	36	20

All (5) Ramachandran outliers are listed below:

Mol	Chain	Res	Type
1	A	224	GLU
1	B	224	GLU
1	C	224	GLU
1	C	315	ARG
1	D	224	GLU

5.3.2 Protein sidechains ⓘ

In the following table, the Percentiles column shows the percent sidechain outliers of the chain as a percentile score with respect to all X-ray entries followed by that with respect to entries of similar resolution.

The Analysed column shows the number of residues for which the sidechain conformation was analysed, and the total number of residues.

Mol	Chain	Analysed	Rotameric	Outliers	Percentiles	
1	A	330/341 (97%)	328 (99%)	2 (1%)	78	66
1	B	330/341 (97%)	328 (99%)	2 (1%)	78	66
1	C	331/341 (97%)	328 (99%)	3 (1%)	70	55
1	D	328/341 (96%)	321 (98%)	7 (2%)	47	23
All	All	1319/1364 (97%)	1305 (99%)	14 (1%)	65	46

5 of 14 residues with a non-rotameric sidechain are listed below:

Mol	Chain	Res	Type
1	D	40	ILE
1	D	59	VAL
1	D	374	THR
1	D	297	ILE
1	D	325	MET

Sometimes sidechains can be flipped to improve hydrogen bonding and reduce clashes. 5 of 30 such sidechains are listed below:

Mol	Chain	Res	Type
1	B	344	ASN
1	D	283	ASN
1	C	189	GLN
1	D	352	GLN
1	D	189	GLN

5.3.3 RNA [i](#)

There are no RNA molecules in this entry.

5.4 Non-standard residues in protein, DNA, RNA chains [i](#)

There are no non-standard protein/DNA/RNA residues in this entry.

5.5 Carbohydrates [i](#)

There are no oligosaccharides in this entry.

5.6 Ligand geometry [i](#)

Of 12 ligands modelled in this entry, 8 are monoatomic - leaving 4 for Mogul analysis.

In the following table, the Counts columns list the number of bonds (or angles) for which Mogul statistics could be retrieved, the number of bonds (or angles) that are observed in the model and the number of bonds (or angles) that are defined in the Chemical Component Dictionary. The Link column lists molecule types, if any, to which the group is linked. The Z score for a bond length (or angle) is the number of standard deviations the observed value is removed from the expected value. A bond length (or angle) with $|Z| > 2$ is considered an outlier worth inspection. RMSZ is the root-mean-square of all Z scores of the bond lengths (or angles).

Mol	Type	Chain	Res	Link	Bond lengths			Bond angles		
					Counts	RMSZ	$\# Z > 2$	Counts	RMSZ	$\# Z > 2$
3	PSJ	C	603	2	11,11,11	0.42	0	10,14,14	0.61	0
3	PSJ	A	601	2	11,11,11	0.45	0	10,14,14	0.59	0
3	PSJ	D	604	2	11,11,11	0.43	0	10,14,14	0.67	0
3	PSJ	B	602	2	11,11,11	0.44	0	10,14,14	0.60	0

In the following table, the Chirals column lists the number of chiral outliers, the number of chiral centers analysed, the number of these observed in the model and the number defined in the

Chemical Component Dictionary. Similar counts are reported in the Torsion and Rings columns.
'-' means no outliers of that kind were identified.

Mol	Type	Chain	Res	Link	Chirals	Torsions	Rings
3	PSJ	C	603	2	-	0/16/16/16	-
3	PSJ	A	601	2	-	0/16/16/16	-
3	PSJ	D	604	2	-	0/16/16/16	-
3	PSJ	B	602	2	-	0/16/16/16	-

There are no bond length outliers.

There are no bond angle outliers.

There are no chirality outliers.

There are no torsion outliers.

There are no ring outliers.

4 monomers are involved in 8 short contacts:

Mol	Chain	Res	Type	Clashes	Symm-Clashes
3	C	603	PSJ	2	0
3	A	601	PSJ	2	0
3	D	604	PSJ	2	0
3	B	602	PSJ	2	0

5.7 Other polymers [i](#)

There are no such residues in this entry.

5.8 Polymer linkage issues [i](#)

There are no chain breaks in this entry.

6 Fit of model and data [i](#)

6.1 Protein, DNA and RNA chains [i](#)

In the following table, the column labelled ‘#RSRZ > 2’ contains the number (and percentage) of RSRZ outliers, followed by percent RSRZ outliers for the chain as percentile scores relative to all X-ray entries and entries of similar resolution. The OWAB column contains the minimum, median, 95th percentile and maximum values of the occupancy-weighted average B-factor per residue. The column labelled ‘Q < 0.9’ lists the number of (and percentage) of residues with an average occupancy less than 0.9.

Mol	Chain	Analysed	<RSRZ>	#RSRZ>2	OWAB(Å ²)	Q<0.9
1	A	421/438 (96%)	-0.22	4 (0%) 79 83	5, 9, 19, 34	0
1	B	420/438 (95%)	-0.29	9 (2%) 63 67	4, 9, 18, 40	0
1	C	426/438 (97%)	-0.08	18 (4%) 40 42	5, 10, 26, 45	0
1	D	418/438 (95%)	-0.27	7 (1%) 69 72	5, 9, 19, 32	0
All	All	1685/1752 (96%)	-0.22	38 (2%) 61 64	4, 9, 21, 45	0

The worst 5 of 38 RSRZ outliers are listed below:

Mol	Chain	Res	Type	RSRZ
1	C	317	VAL	8.0
1	C	429	ILE	5.8
1	C	427	GLY	5.7
1	C	426	GLY	5.2
1	D	421	ALA	5.0

6.2 Non-standard residues in protein, DNA, RNA chains [i](#)

There are no non-standard protein/DNA/RNA residues in this entry.

6.3 Carbohydrates [i](#)

There are no oligosaccharides in this entry.

6.4 Ligands [i](#)

In the following table, the Atoms column lists the number of modelled atoms in the group and the number defined in the chemical component dictionary. The B-factors column lists the minimum, median, 95th percentile and maximum values of B factors of atoms in the group. The column labelled ‘Q < 0.9’ lists the number of atoms with occupancy less than 0.9.

Mol	Type	Chain	Res	Atoms	RSCC	RSR	B-factors(\AA^2)	Q<0.9
3	PSJ	C	603	12/12	0.91	0.09	13,16,19,19	0
2	MN	C	505	1/1	0.92	0.07	15,15,15,15	0
2	MN	D	507	1/1	0.93	0.07	13,13,13,13	0
3	PSJ	D	604	12/12	0.93	0.09	13,17,19,19	0
3	PSJ	B	602	12/12	0.94	0.08	11,14,17,17	0
2	MN	B	503	1/1	0.95	0.06	13,13,13,13	0
3	PSJ	A	601	12/12	0.96	0.07	11,13,17,17	0
2	MN	A	501	1/1	0.97	0.04	11,11,11,11	0
2	MN	C	506	1/1	0.99	0.11	13,13,13,13	0
2	MN	D	508	1/1	0.99	0.10	11,11,11,11	0
2	MN	A	502	1/1	1.00	0.07	11,11,11,11	0
2	MN	B	504	1/1	1.00	0.09	12,12,12,12	0

6.5 Other polymers [i](#)

There are no such residues in this entry.