



# wwPDB X-ray Structure Validation Summary Report ⓘ

Mar 6, 2026 – 11:27 AM UTC

PDB ID : 4FAB / pdb\_00004fab  
Title : THREE-DIMENSIONAL STRUCTURE OF A FLUORESCCEIN-FAB COM-  
PLEX CRYSTALLIZED IN 2-METHYL-2,4-PENTANEDIOL  
Authors : Herron, J.N.; He, X.; Mason, M.L.; Vossjunior, E.W.; Edmundson, A.B.  
Deposited on : 1989-04-10  
Resolution : 2.70 Å(reported)

This is a wwPDB X-ray Structure Validation Summary Report for a publicly released PDB entry.

We welcome your comments at [validation@mail.wwpdb.org](mailto:validation@mail.wwpdb.org)

A user guide is available at

<https://www.wwpdb.org/validation/2017/XrayValidationReportHelp>

with specific help available everywhere you see the ⓘ symbol.

The types of validation reports are described at

<http://www.wwpdb.org/validation/2017/FAQs#types>.

---

The following versions of software and data (see [references ⓘ](#)) were used in the production of this report:

MolProbity	:	4-5-2 with Phenix2.0
Mogul	:	2022.3.0, CSD as543be (2022)
Xtriage (Phenix)	:	NOT EXECUTED
EDS	:	NOT EXECUTED
Buster-report	:	wwPDB partial adaption of 1.1.7 (2018)
Percentile statistics	:	20250101.v01 (using entries in the PDB archive January 1st 2025)
Ideal geometry (proteins)	:	Engh & Huber (2001)
Ideal geometry (DNA, RNA)	:	Parkinson et al. (1996)
Validation Pipeline (wwPDB-VP)	:	2.49

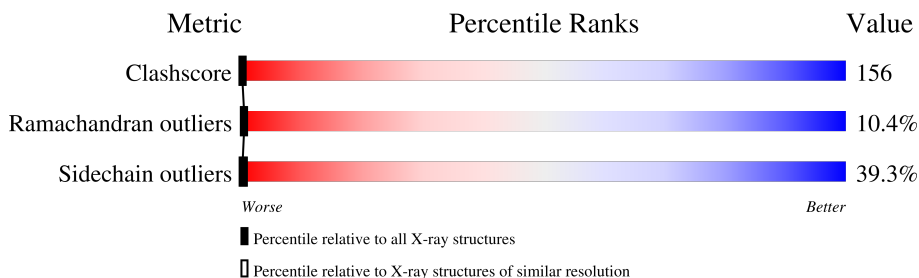
# 1 Overall quality at a glance

The following experimental techniques were used to determine the structure:

## *X-RAY DIFFRACTION*

The reported resolution of this entry is 2.70 Å.

Percentile scores (ranging between 0-100) for global validation metrics of the entry are shown in the following graphic. The table shows the number of entries on which the scores are based.



Metric	Whole archive (#Entries)	Similar resolution (#Entries, resolution range(Å))
Clashscore	190562	3843 (2.70-2.70)
Ramachandran outliers	187476	3778 (2.70-2.70)
Sidechain outliers	187428	3778 (2.70-2.70)

The table below summarises the geometric issues observed across the polymeric chains and their fit to the electron density. The red, orange, yellow and green segments of the lower bar indicate the fraction of residues that contain outliers for  $\geq 3$ , 2, 1 and 0 types of geometric quality criteria respectively. A grey segment represents the fraction of residues that are not modelled. The numeric value for each fraction is indicated below the corresponding segment, with a dot representing fractions  $\leq 5\%$ .

Note EDS was not executed.

Mol	Chain	Length	Quality of chain
1	L	219	
2	H	216	

The following table lists non-polymeric compounds, carbohydrate monomers and non-standard residues in protein, DNA, RNA chains that are outliers for geometric or electron-density-fit criteria:

Mol	Type	Chain	Res	Chirality	Geometry	Clashes	Electron density
3	FLU	H	218	-	-	X	-
4	MPD	H	219	-	-	X	-

## 2 Entry composition

There are 4 unique types of molecules in this entry. The entry contains 3395 atoms, of which 0 are hydrogens and 0 are deuteriums.

In the tables below, the ZeroOcc column contains the number of atoms modelled with zero occupancy, the AltConf column contains the number of residues with at least one atom in alternate conformation and the Trace column contains the number of residues modelled with at most 2 atoms.

- Molecule 1 is a protein called IGG2A-KAPPA 4-4-20 FAB (LIGHT CHAIN).

Mol	Chain	Residues	Atoms					ZeroOcc	AltConf	Trace
1	L	219	Total	C	N	O	S	0	0	0
			1700	1060	291	342	7			

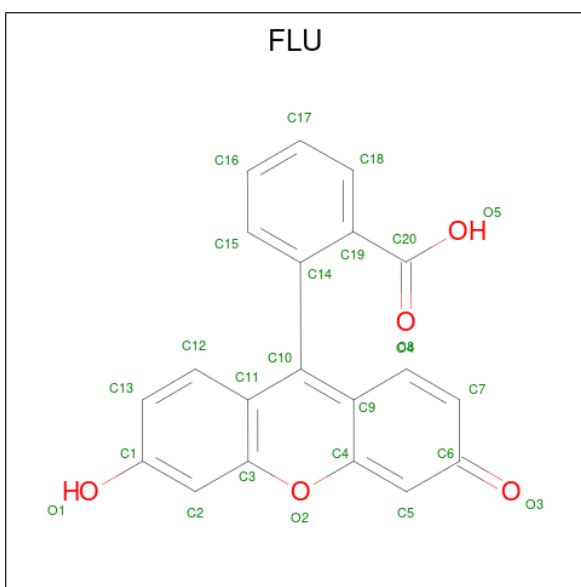
There are 12 discrepancies between the modelled and reference sequences:

Chain	Residue	Modelled	Actual	Comment	Reference
L	2	VAL	ILE	conflict	GB 1589925
L	7	THR	SER	conflict	GB 1589925
L	29	LEU	VAL	conflict	GB 1589925
L	33	GLN	ASN	conflict	GB 1589925
L	39	ARG	GLU	conflict	GB 1589925
L	41	TYR	PHE	conflict	GB 1589925
L	51	VAL	LEU	conflict	GB 1589925
L	92	PHE	TYR	conflict	GB 1589925
L	94	SER	PHE	conflict	GB 1589925
L	96	SER	ALA	conflict	GB 1589925
L	97	THR	SER	conflict	GB 1589925
L	217	ASN	GLY	conflict	GB 1589925

- Molecule 2 is a protein called IGG2A-KAPPA 4-4-20 FAB (HEAVY CHAIN).

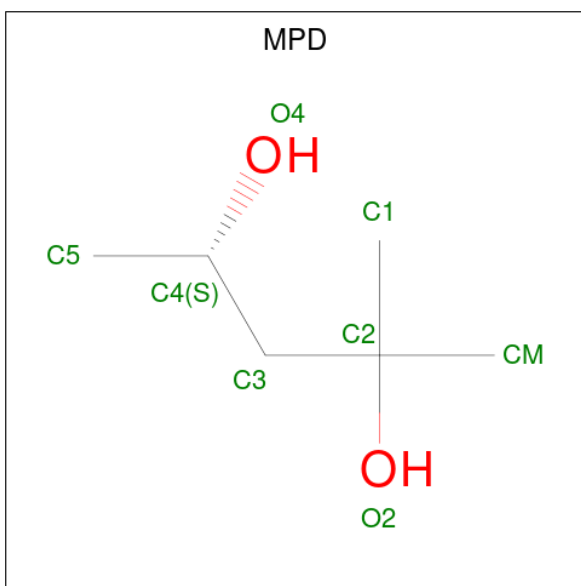
Mol	Chain	Residues	Atoms					ZeroOcc	AltConf	Trace
2	H	216	Total	C	N	O	S	0	0	0
			1662	1050	269	333	10			

- Molecule 3 is 2-(6-HYDROXY-3-OXO-3H-XANTHEN-9-YL)-BENZOIC ACID (CCD ID: FLU) (formula: C<sub>20</sub>H<sub>12</sub>O<sub>5</sub>).



Mol	Chain	Residues	Atoms			ZeroOcc	AltConf
3	H	1	Total	C	O	0	0
			25	20	5		

- Molecule 4 is (4S)-2-METHYL-2,4-PENTANEDIOL (CCD ID: MPD) (formula: C<sub>6</sub>H<sub>14</sub>O<sub>2</sub>).



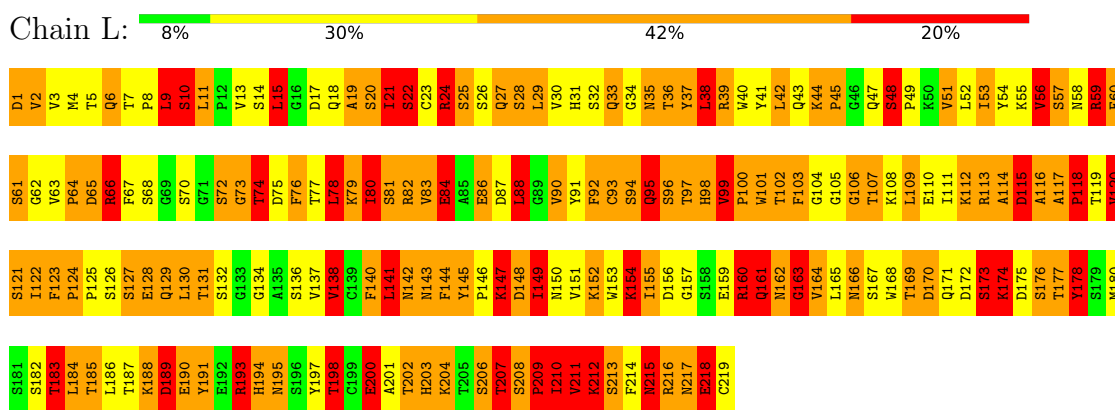
Mol	Chain	Residues	Atoms			ZeroOcc	AltConf
4	H	1	Total	C	O	0	0
			8	6	2		

### 3 Residue-property plots

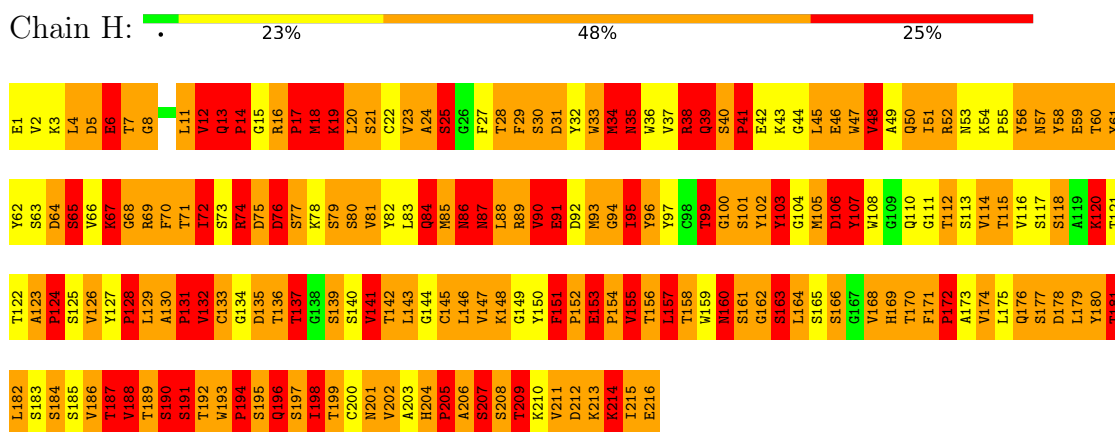
These plots are drawn for all protein, RNA, DNA and oligosaccharide chains in the entry. The first graphic for a chain summarises the proportions of the various outlier classes displayed in the second graphic. The second graphic shows the sequence view annotated by issues in geometry. Residues are color-coded according to the number of geometric quality criteria for which they contain at least one outlier: green = 0, yellow = 1, orange = 2 and red = 3 or more. Stretches of 2 or more consecutive residues without any outlier are shown as a green connector. Residues present in the sample, but not in the model, are shown in grey.

Note EDS was not executed.

#### • Molecule 1: IGG2A-KAPPA 4-4-20 FAB (LIGHT CHAIN)



#### • Molecule 2: IGG2A-KAPPA 4-4-20 FAB (HEAVY CHAIN)



## 4 Data and refinement statistics

Xtriage (Phenix) and EDS were not executed - this section is therefore incomplete.

Property	Value	Source
Space group	P 1	Depositor
Cell constants a, b, c, $\alpha$ , $\beta$ , $\gamma$	58.30Å 43.90Å 42.50Å 82.10° 87.30° 84.60°	Depositor
Resolution (Å)	6.00 – 2.70	Depositor
% Data completeness (in resolution range)	(Not available) (6.00-2.70)	Depositor
$R_{merge}$	(Not available)	Depositor
$R_{sym}$	(Not available)	Depositor
Refinement program	PROLSQ	Depositor
R, $R_{free}$	0.215 , (Not available)	Depositor
Estimated twinning fraction	No twinning to report.	Xtriage
Total number of atoms	3395	wwPDB-VP
Average B, all atoms (Å <sup>2</sup> )	13.0	wwPDB-VP

## 5 Model quality

### 5.1 Standard geometry

Bond lengths and bond angles in the following residue types are not validated in this section: MPD, FLU

The Z score for a bond length (or angle) is the number of standard deviations the observed value is removed from the expected value. A bond length (or angle) with  $|Z| > 5$  is considered an outlier worth inspection. RMSZ is the root-mean-square of all Z scores of the bond lengths (or angles).

Mol	Chain	Bond lengths		Bond angles	
		RMSZ	$\# Z  > 5$	RMSZ	$\# Z  > 5$
1	L	1.62	19/1739 (1.1%)	3.03	217/2359 (9.2%)
2	H	1.76	31/1706 (1.8%)	3.22	250/2326 (10.7%)
All	All	1.69	50/3445 (1.5%)	3.13	467/4685 (10.0%)

Chiral center outliers are detected by calculating the chiral volume of a chiral center and verifying if the center is modelled as a planar moiety or with the opposite hand. A planarity outlier is detected by checking planarity of atoms in a peptide group, atoms in a mainchain group or atoms of a sidechain that are expected to be planar.

Mol	Chain	#Chirality outliers	#Planarity outliers
1	L	0	2

The worst 5 of 50 bond length outliers are listed below:

Mol	Chain	Res	Type	Atoms	Z	Observed(Å)	Ideal(Å)
2	H	204	HIS	N-CA	8.41	1.55	1.46
2	H	215	ILE	N-CA	7.78	1.55	1.46
2	H	196	GLN	N-CA	7.55	1.55	1.46
1	L	23	CYS	N-CA	7.43	1.55	1.46
2	H	196	GLN	CA-CB	-7.29	1.41	1.53

The worst 5 of 467 bond angle outliers are listed below:

Mol	Chain	Res	Type	Atoms	Z	Observed(°)	Ideal(°)
2	H	204	HIS	CA-CB-CG	27.67	141.47	113.80
1	L	142	ASN	CA-CB-CG	23.09	135.69	112.60
2	H	35	ASN	CA-CB-CG	18.70	131.30	112.60
2	H	196	GLN	CA-CB-CG	18.45	151.00	114.10
2	H	80	SER	CA-CB-OG	17.30	145.71	111.10

There are no chirality outliers.

All (2) planarity outliers are listed below:

Mol	Chain	Res	Type	Group
1	L	193	ARG	Sidechain
1	L	39	ARG	Sidechain

## 5.2 Too-close contacts ⓘ

In the following table, the Non-H and H(model) columns list the number of non-hydrogen atoms and hydrogen atoms in the chain respectively. The H(added) column lists the number of hydrogen atoms added and optimized by MolProbity. The Clashes column lists the number of clashes within the asymmetric unit, whereas Symm-Clashes lists symmetry-related clashes.

Mol	Chain	Non-H	H(model)	H(added)	Clashes	Symm-Clashes
1	L	1700	0	1641	384	2
2	H	1662	0	1597	685	3
3	H	25	0	10	12	0
4	H	8	0	14	24	0
All	All	3395	0	3262	1040	4

The all-atom clashscore is defined as the number of clashes found per 1000 atoms (including hydrogen atoms). The all-atom clashscore for this structure is 156.

The worst 5 of 1040 close contacts within the same asymmetric unit are listed below, sorted by their clash magnitude.

Atom-1	Atom-2	Interatomic distance (Å)	Clash overlap (Å)
2:H:31:ASP:HA	2:H:53:ASN:ND2	1.41	1.32
1:L:214:PHE:HB2	2:H:133:CYS:SG	1.75	1.27
1:L:190:GLU:HA	1:L:193:ARG:NH2	1.47	1.27
2:H:51:ILE:HD11	2:H:72:ILE:CD1	1.68	1.24
2:H:38:ARG:NH1	2:H:96:TYR:OH	1.72	1.20

All (4) symmetry-related close contacts are listed below. The label for Atom-2 includes the symmetry operator and encoded unit-cell translations to be applied.

Atom-1	Atom-2	Interatomic distance (Å)	Clash overlap (Å)
1:L:57:SER:CB	1:L:216:ARG:NH2[1_645]	1.99	0.21
2:H:16:ARG:NH1	2:H:135:ASP:OD2[1_546]	2.07	0.13
1:L:70:SER:OG	2:H:209:THR:OG1[1_655]	2.14	0.06
2:H:16:ARG:CG	2:H:135:ASP:OD1[1_546]	2.14	0.06

### 5.3 Torsion angles [i](#)

#### 5.3.1 Protein backbone [i](#)

In the following table, the Percentiles column shows the percent Ramachandran outliers of the chain as a percentile score with respect to all X-ray entries followed by that with respect to entries of similar resolution.

The Analysed column shows the number of residues for which the backbone conformation was analysed, and the total number of residues.

Mol	Chain	Analysed	Favoured	Allowed	Outliers	Percentiles	
1	L	217/219 (99%)	173 (80%)	29 (13%)	15 (7%)	1	1
2	H	214/216 (99%)	145 (68%)	39 (18%)	30 (14%)	0	0
All	All	431/435 (99%)	318 (74%)	68 (16%)	45 (10%)	0	0

5 of 45 Ramachandran outliers are listed below:

Mol	Chain	Res	Type
1	L	73	GLY
1	L	82	ARG
1	L	105	GLY
1	L	161	GLN
1	L	174	LYS

#### 5.3.2 Protein sidechains [i](#)

In the following table, the Percentiles column shows the percent sidechain outliers of the chain as a percentile score with respect to all X-ray entries followed by that with respect to entries of similar resolution.

The Analysed column shows the number of residues for which the sidechain conformation was analysed, and the total number of residues.

Mol	Chain	Analysed	Rotameric	Outliers	Percentiles	
1	L	197/197 (100%)	122 (62%)	75 (38%)	0	0
2	H	190/190 (100%)	113 (60%)	77 (40%)	0	0
All	All	387/387 (100%)	235 (61%)	152 (39%)	0	0

5 of 152 residues with a non-rotameric sidechain are listed below:

Mol	Chain	Res	Type
2	H	120	LYS

*Continued on next page...*

*Continued from previous page...*

Mol	Chain	Res	Type
2	H	194	PRO
2	H	132	VAL
2	H	160	ASN
2	H	214	LYS

Sometimes sidechains can be flipped to improve hydrogen bonding and reduce clashes. 5 of 12 such sidechains are listed below:

Mol	Chain	Res	Type
2	H	53	ASN
2	H	110	GLN
2	H	201	ASN
2	H	160	ASN
1	L	98	HIS

### 5.3.3 RNA [i](#)

There are no RNA molecules in this entry.

## 5.4 Non-standard residues in protein, DNA, RNA chains [i](#)

There are no non-standard protein/DNA/RNA residues in this entry.

## 5.5 Carbohydrates [i](#)

There are no oligosaccharides in this entry.

## 5.6 Ligand geometry [i](#)

2 ligands are modelled in this entry.

In the following table, the Counts columns list the number of bonds (or angles) for which Mogul statistics could be retrieved, the number of bonds (or angles) that are observed in the model and the number of bonds (or angles) that are defined in the Chemical Component Dictionary. The Link column lists molecule types, if any, to which the group is linked. The Z score for a bond length (or angle) is the number of standard deviations the observed value is removed from the expected value. A bond length (or angle) with  $|Z| > 2$  is considered an outlier worth inspection. RMSZ is the root-mean-square of all Z scores of the bond lengths (or angles).

Mol	Type	Chain	Res	Link	Bond lengths			Bond angles		
					Counts	RMSZ	# Z  > 2	Counts	RMSZ	# Z  > 2
3	FLU	H	218	-	28,28,28	2.75	10 (35%)	41,41,41	1.89	11 (26%)
4	MPD	H	219	-	7,7,7	0.89	0	9,10,10	1.09	1 (11%)

In the following table, the Chirals column lists the number of chiral outliers, the number of chiral centers analysed, the number of these observed in the model and the number defined in the Chemical Component Dictionary. Similar counts are reported in the Torsion and Rings columns. '-' means no outliers of that kind were identified.

Mol	Type	Chain	Res	Link	Chirals	Torsions	Rings
3	FLU	H	218	-	-	4/6/12/12	0/4/4/4
4	MPD	H	219	-	-	0/5/5/5	-

The worst 5 of 10 bond length outliers are listed below:

Mol	Chain	Res	Type	Atoms	Z	Observed(Å)	Ideal(Å)
3	H	218	FLU	C14-C10	-8.68	1.38	1.49
3	H	218	FLU	C19-C20	-6.73	1.35	1.49
3	H	218	FLU	O3-C6	3.83	1.36	1.24
3	H	218	FLU	C5-C6	-3.56	1.37	1.45
3	H	218	FLU	C17-C16	3.27	1.45	1.38

The worst 5 of 12 bond angle outliers are listed below:

Mol	Chain	Res	Type	Atoms	Z	Observed(°)	Ideal(°)
3	H	218	FLU	O3-C6-C5	-5.77	113.22	121.43
3	H	218	FLU	O5-C20-O4	-3.80	115.19	123.35
3	H	218	FLU	O3-C6-C7	3.19	126.71	121.56
3	H	218	FLU	C7-C6-C5	2.91	120.07	117.12
3	H	218	FLU	C18-C19-C14	2.90	122.51	119.26

There are no chirality outliers.

All (4) torsion outliers are listed below:

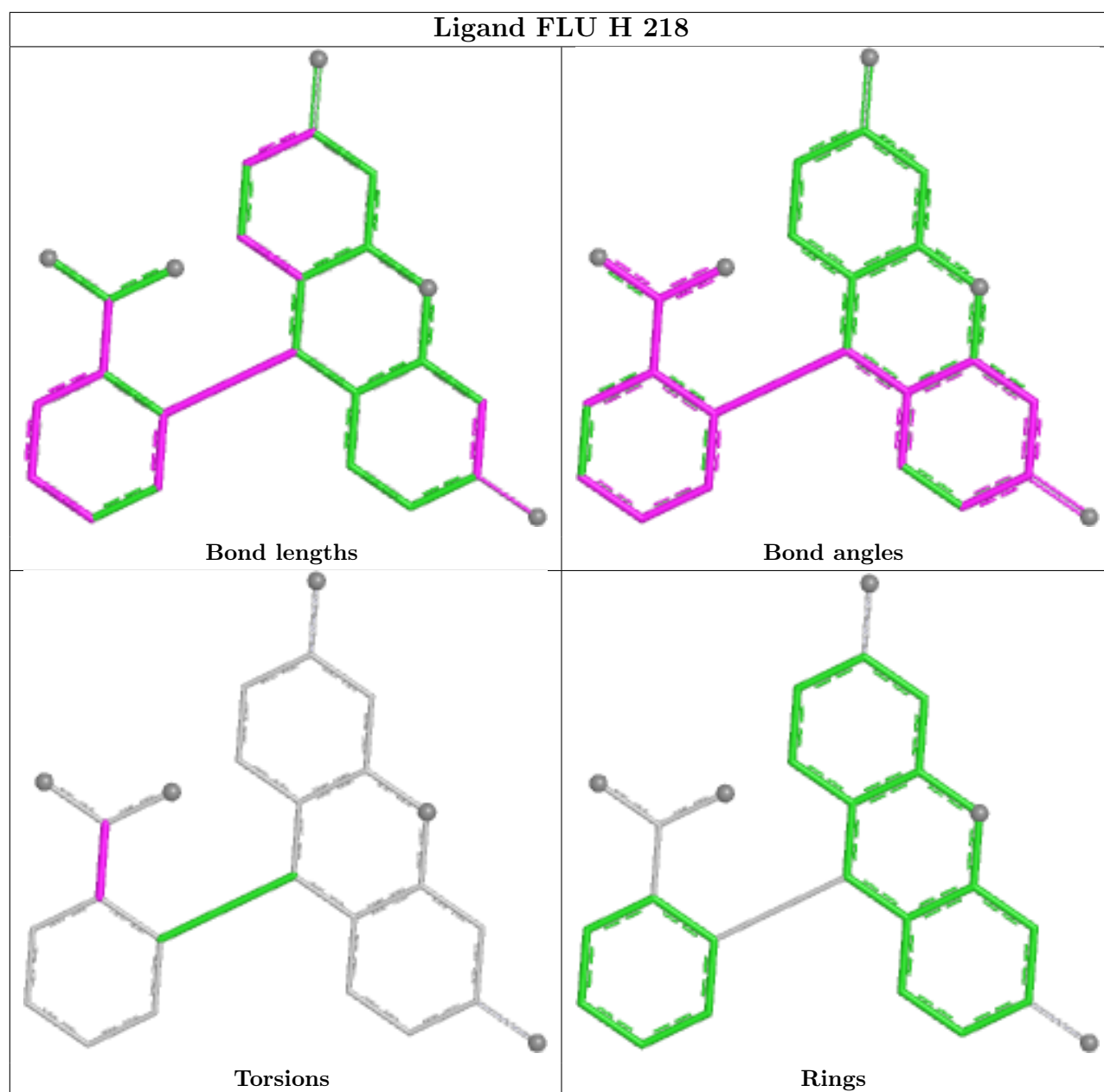
Mol	Chain	Res	Type	Atoms
3	H	218	FLU	C18-C19-C20-O4
3	H	218	FLU	C14-C19-C20-O4
3	H	218	FLU	C18-C19-C20-O5
3	H	218	FLU	C14-C19-C20-O5

There are no ring outliers.

2 monomers are involved in 36 short contacts:

Mol	Chain	Res	Type	Clashes	Symm-Clashes
3	H	218	FLU	12	0
4	H	219	MPD	24	0

The following is a two-dimensional graphical depiction of Mogul quality analysis of bond lengths, bond angles, torsion angles, and ring geometry for all instances of the Ligand of Interest. In addition, ligands with molecular weight > 250 and outliers as shown on the validation Tables will also be included. For torsion angles, if less than 5% of the Mogul distribution of torsion angles is within 10 degrees of the torsion angle in question, then that torsion angle is considered an outlier. Any bond that is central to one or more torsion angles identified as an outlier by Mogul will be highlighted in the graph. For rings, the root-mean-square deviation (RMSD) between the ring in question and similar rings identified by Mogul is calculated over all ring torsion angles. If the average RMSD is greater than 60 degrees and the minimal RMSD between the ring in question and any Mogul-identified rings is also greater than 60 degrees, then that ring is considered an outlier. The outliers are highlighted in purple. The color gray indicates Mogul did not find sufficient equivalents in the CSD to analyse the geometry.



## 5.7 Other polymers [i](#)

There are no such residues in this entry.

## 5.8 Polymer linkage issues [i](#)

There are no chain breaks in this entry.

## 6 Fit of model and data

### 6.1 Protein, DNA and RNA chains

EDS was not executed - this section is therefore empty.

### 6.2 Non-standard residues in protein, DNA, RNA chains

EDS was not executed - this section is therefore empty.

### 6.3 Carbohydrates

EDS was not executed - this section is therefore empty.

### 6.4 Ligands

EDS was not executed - this section is therefore empty.

### 6.5 Other polymers

EDS was not executed - this section is therefore empty.