



# wwPDB X-ray Structure Validation Summary Report ⓘ

Mar 10, 2026 – 08:48 AM UTC

PDB ID : 1EFA / pdb\_00001efa  
Title : CRYSTAL STRUCTURE OF THE LAC REPRESSOR DIMER BOUND TO  
OPERATOR AND THE ANTI-INDUCER ONPF  
Authors : Bell, C.E.; Lewis, M.  
Deposited on : 2000-02-07  
Resolution : 2.60 Å(reported)

This is a wwPDB X-ray Structure Validation Summary Report for a publicly released PDB entry.

We welcome your comments at [validation@mail.wwpdb.org](mailto:validation@mail.wwpdb.org)

A user guide is available at

<https://www.wwpdb.org/validation/2017/XrayValidationReportHelp>

with specific help available everywhere you see the ⓘ symbol.

The types of validation reports are described at

<http://www.wwpdb.org/validation/2017/FAQs#types>.

---

The following versions of software and data (see [references ⓘ](#)) were used in the production of this report:

MolProbity : 4-5-2 with Phenix2.0  
Mogul : 2022.3.0, CSD as543be (2022)  
Xtriage (Phenix) : **NOT EXECUTED**  
EDS : **NOT EXECUTED**  
Buster-report : wwPDB partial adaption of 1.1.7 (2018)  
Percentile statistics : 20250101.v01 (using entries in the PDB archive January 1st 2025)  
Ideal geometry (proteins) : Engh & Huber (2001)  
Ideal geometry (DNA, RNA) : Parkinson et al. (1996)  
Validation Pipeline (wwPDB-VP) : 2.49

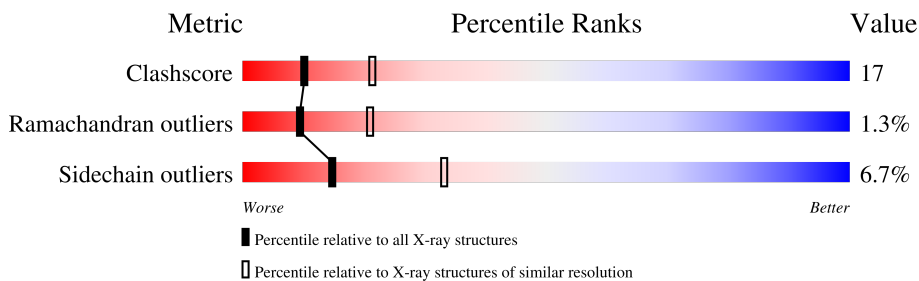
# 1 Overall quality at a glance

The following experimental techniques were used to determine the structure:

*X-RAY DIFFRACTION*

The reported resolution of this entry is 2.60 Å.

Percentile scores (ranging between 0-100) for global validation metrics of the entry are shown in the following graphic. The table shows the number of entries on which the scores are based.



Metric	Whole archive (#Entries)	Similar resolution (#Entries, resolution range(Å))
Clashscore	190562	4347 (2.60-2.60)
Ramachandran outliers	187476	4277 (2.60-2.60)
Sidechain outliers	187428	4277 (2.60-2.60)

The table below summarises the geometric issues observed across the polymeric chains and their fit to the electron density. The red, orange, yellow and green segments of the lower bar indicate the fraction of residues that contain outliers for  $\geq 3$ , 2, 1 and 0 types of geometric quality criteria respectively. A grey segment represents the fraction of residues that are not modelled. The numeric value for each fraction is indicated below the corresponding segment, with a dot representing fractions  $\leq 5\%$ .

Note EDS was not executed.

Mol	Chain	Length	Quality of chain
1	D	21	
1	E	21	
2	A	333	
2	B	333	
2	C	333	

## 2 Entry composition

There are 4 unique types of molecules in this entry. The entry contains 7838 atoms, of which 0 are hydrogens and 0 are deuteriums.

In the tables below, the ZeroOcc column contains the number of atoms modelled with zero occupancy, the AltConf column contains the number of residues with at least one atom in alternate conformation and the Trace column contains the number of residues modelled with at most 2 atoms.

- Molecule 1 is a DNA chain called DNA (5'-D(\*GP\*AP\*AP\*T\*TP\*GP\*TP\*GP\*AP\*GP\*C P\*GP\*CP\*TP\*CP\*AP\*CP\*AP\*AP\*TP\*T)-3').

Mol	Chain	Residues	Atoms					ZeroOcc	AltConf	Trace
1	D	17	Total	C	N	O	P	0	0	0
			345	166	62	101	16			
1	E	17	Total	C	N	O	P	0	0	0
			349	166	65	101	17			

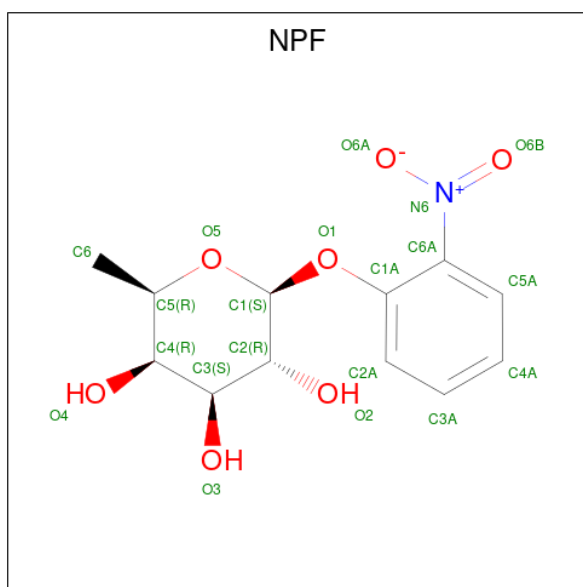
- Molecule 2 is a protein called LAC REPRESSOR.

Mol	Chain	Residues	Atoms					ZeroOcc	AltConf	Trace
2	A	328	Total	C	N	O	S	0	0	0
			2418	1507	429	471	11			
2	B	330	Total	C	N	O	S	0	0	0
			2459	1536	438	474	11			
2	C	286	Total	C	N	O	S	0	0	0
			2145	1341	382	412	10			

There are 3 discrepancies between the modelled and reference sequences:

Chain	Residue	Modelled	Actual	Comment	Reference
A	109	THR	ALA	engineered mutation	UNP P03023
B	109	THR	ALA	engineered mutation	UNP P03023
C	109	THR	ALA	engineered mutation	UNP P03023

- Molecule 3 is 2-nitrophenyl beta-D-fucopyranoside (CCD ID: NPF) (formula: C<sub>12</sub>H<sub>15</sub>NO<sub>7</sub>).



Mol	Chain	Residues	Atoms				ZeroOcc	AltConf
3	A	1	Total 20	C 12	N 1	O 7	0	0
3	B	1	Total 20	C 12	N 1	O 7	0	0
3	C	1	Total 20	C 12	N 1	O 7	0	0

- Molecule 4 is water.

Mol	Chain	Residues	Atoms	ZeroOcc	AltConf
4	A	8	Total O 8 8	0	0
4	B	32	Total O 32 32	0	0
4	C	22	Total O 22 22	0	0

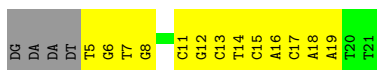
### 3 Residue-property plots

These plots are drawn for all protein, RNA, DNA and oligosaccharide chains in the entry. The first graphic for a chain summarises the proportions of the various outlier classes displayed in the second graphic. The second graphic shows the sequence view annotated by issues in geometry. Residues are color-coded according to the number of geometric quality criteria for which they contain at least one outlier: green = 0, yellow = 1, orange = 2 and red = 3 or more. Stretches of 2 or more consecutive residues without any outlier are shown as a green connector. Residues present in the sample, but not in the model, are shown in grey.

Note EDS was not executed.

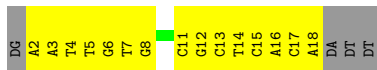
- Molecule 1: DNA (5'-D(\*GP\*AP\*AP\*T\*TP\*GP\*TP\*GP\*AP\*GP\*CP\*GP\*CP\*TP\*CP\*AP\*CP\*AP\*AP\*TP\*T)-3')

Chain D: 



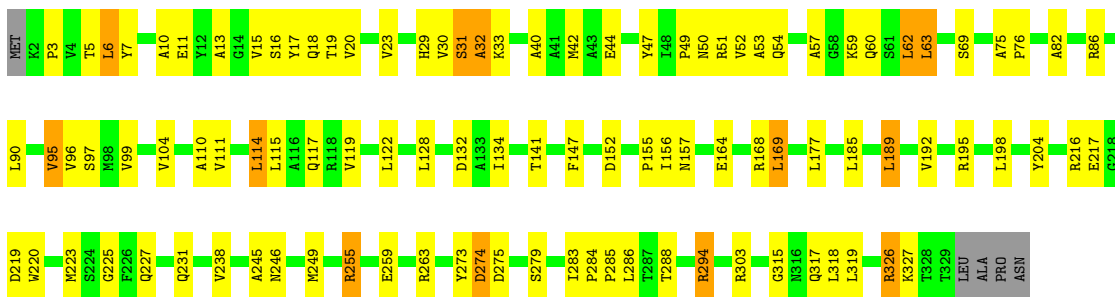
- Molecule 1: DNA (5'-D(\*GP\*AP\*AP\*T\*TP\*GP\*TP\*GP\*AP\*GP\*CP\*GP\*CP\*TP\*CP\*AP\*CP\*AP\*AP\*TP\*T)-3')

Chain E: 



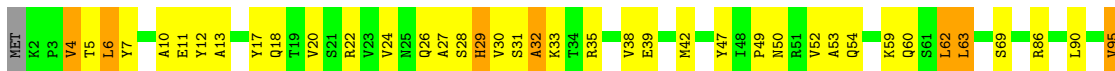
- Molecule 2: LAC REPRESSOR

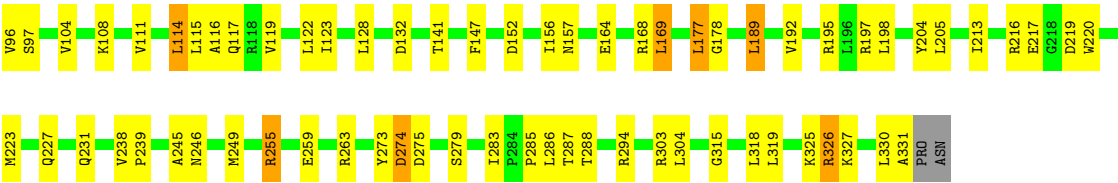
Chain A: 



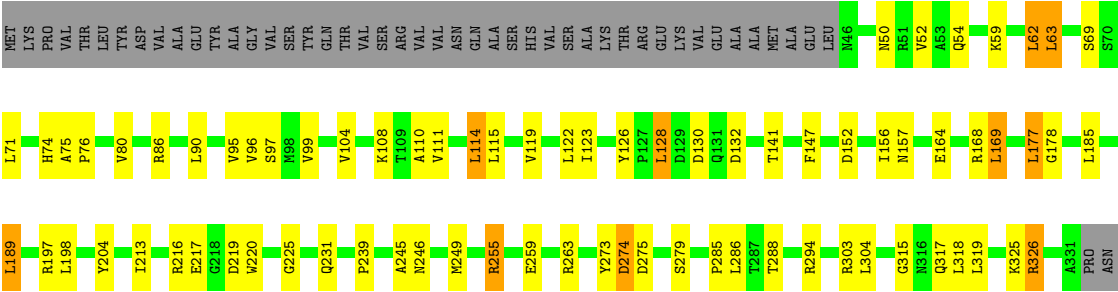
- Molecule 2: LAC REPRESSOR

Chain B: 





• Molecule 2: LAC REPRESSOR



## 4 Data and refinement statistics

Xtriage (Phenix) and EDS were not executed - this section is therefore incomplete.

Property	Value	Source
Space group	H 3 2	Depositor
Cell constants a, b, c, $\alpha$ , $\beta$ , $\gamma$	251.44Å 251.44Å 204.79Å 90.00° 90.00° 120.00°	Depositor
Resolution (Å)	10.00 – 2.60	Depositor
% Data completeness (in resolution range)	93.1 (10.00-2.60)	Depositor
$R_{merge}$	0.07	Depositor
$R_{sym}$	(Not available)	Depositor
Refinement program	CNS 0.9	Depositor
R, $R_{free}$	0.247 , 0.264	Depositor
Estimated twinning fraction	No twinning to report.	Xtriage
Total number of atoms	7838	wwPDB-VP
Average B, all atoms (Å <sup>2</sup> )	69.0	wwPDB-VP

## 5 Model quality [i](#)

### 5.1 Standard geometry [i](#)

Bond lengths and bond angles in the following residue types are not validated in this section: NPF

The Z score for a bond length (or angle) is the number of standard deviations the observed value is removed from the expected value. A bond length (or angle) with  $|Z| > 5$  is considered an outlier worth inspection. RMSZ is the root-mean-square of all Z scores of the bond lengths (or angles).

Mol	Chain	Bond lengths		Bond angles	
		RMSZ	$\# Z  > 5$	RMSZ	$\# Z  > 5$
1	D	0.25	0/386	0.70	0/594
1	E	0.27	0/391	0.71	0/601
2	A	0.47	0/2451	0.94	3/3330 (0.1%)
2	B	0.50	0/2493	0.96	8/3390 (0.2%)
2	C	0.51	0/2174	0.94	3/2955 (0.1%)
All	All	0.47	0/7895	0.93	14/10870 (0.1%)

There are no bond length outliers.

The worst 5 of 14 bond angle outliers are listed below:

Mol	Chain	Res	Type	Atoms	Z	Observed( $^{\circ}$ )	Ideal( $^{\circ}$ )
2	C	286	LEU	N-CA-C	6.64	119.40	109.25
2	B	286	LEU	N-CA-C	6.25	118.81	109.25
2	C	130	ASP	N-CA-C	6.20	118.55	111.11
2	A	6	LEU	N-CA-C	-6.18	105.00	112.54
2	B	303	ARG	NE-CZ-NH1	-6.01	115.49	121.50

There are no chirality outliers.

There are no planarity outliers.

### 5.2 Too-close contacts [i](#)

In the following table, the Non-H and H(model) columns list the number of non-hydrogen atoms and hydrogen atoms in the chain respectively. The H(added) column lists the number of hydrogen atoms added and optimized by MolProbity. The Clashes column lists the number of clashes within the asymmetric unit, whereas Symm-Clashes lists symmetry-related clashes.

Mol	Chain	Non-H	H(model)	H(added)	Clashes	Symm-Clashes
1	D	345	0	194	21	0

*Continued on next page...*



*Continued from previous page...*

Mol	Chain	Non-H	H(model)	H(added)	Clashes	Symm-Clashes
1	E	349	0	192	26	0
2	A	2418	0	2418	85	0
2	B	2459	0	2492	95	0
2	C	2145	0	2192	67	0
3	A	20	0	0	0	0
3	B	20	0	0	0	0
3	C	20	0	0	0	0
4	A	8	0	0	1	0
4	B	32	0	0	1	0
4	C	22	0	0	3	1
All	All	7838	0	7488	263	1

The all-atom clashscore is defined as the number of clashes found per 1000 atoms (including hydrogen atoms). The all-atom clashscore for this structure is 17.

The worst 5 of 263 close contacts within the same asymmetric unit are listed below, sorted by their clash magnitude.

Atom-1	Atom-2	Interatomic distance (Å)	Clash overlap (Å)
2:C:74:HIS:HB3	4:C:912:HOH:O	1.65	0.96
2:B:30:VAL:HG11	2:B:35:ARG:HB3	1.46	0.96
1:E:13:DC:OP2	2:A:6:LEU:HB2	1.75	0.86
1:D:19:DA:H61	1:E:3:DA:H61	1.30	0.79
2:B:63:LEU:HD13	2:B:119:VAL:HG12	1.64	0.79

All (1) symmetry-related close contacts are listed below. The label for Atom-2 includes the symmetry operator and encoded unit-cell translations to be applied.

Atom-1	Atom-2	Interatomic distance (Å)	Clash overlap (Å)
4:C:919:HOH:O	4:C:919:HOH:O[17_555]	1.57	0.63

## 5.3 Torsion angles [i](#)

### 5.3.1 Protein backbone [i](#)

In the following table, the Percentiles column shows the percent Ramachandran outliers of the chain as a percentile score with respect to all X-ray entries followed by that with respect to entries of similar resolution.

The Analysed column shows the number of residues for which the backbone conformation was analysed, and the total number of residues.

Mol	Chain	Analysed	Favoured	Allowed	Outliers	Percentiles	
2	A	326/333 (98%)	294 (90%)	26 (8%)	6 (2%)	6	14
2	B	328/333 (98%)	298 (91%)	26 (8%)	4 (1%)	10	23
2	C	284/333 (85%)	264 (93%)	18 (6%)	2 (1%)	18	38
All	All	938/999 (94%)	856 (91%)	70 (8%)	12 (1%)	9	21

5 of 12 Ramachandran outliers are listed below:

Mol	Chain	Res	Type
2	A	29	HIS
2	A	274	ASP
2	B	29	HIS
2	B	32	ALA
2	B	141	THR

### 5.3.2 Protein sidechains ⓘ

In the following table, the Percentiles column shows the percent sidechain outliers of the chain as a percentile score with respect to all X-ray entries followed by that with respect to entries of similar resolution.

The Analysed column shows the number of residues for which the sidechain conformation was analysed, and the total number of residues.

Mol	Chain	Analysed	Rotameric	Outliers	Percentiles	
2	A	258/273 (94%)	241 (93%)	17 (7%)	15	34
2	B	265/273 (97%)	247 (93%)	18 (7%)	14	32
2	C	234/273 (86%)	218 (93%)	16 (7%)	14	32
All	All	757/819 (92%)	706 (93%)	51 (7%)	15	33

5 of 51 residues with a non-rotameric sidechain are listed below:

Mol	Chain	Res	Type
2	B	189	LEU
2	C	62	LEU
2	C	319	LEU
2	B	198	LEU
2	B	318	LEU

Sometimes sidechains can be flipped to improve hydrogen bonding and reduce clashes. 5 of 28 such sidechains are listed below:

Mol	Chain	Res	Type
2	B	125	ASN
2	C	306	GLN
2	B	227	GLN
2	C	227	GLN
2	B	163	HIS

### 5.3.3 RNA [i](#)

There are no RNA molecules in this entry.

## 5.4 Non-standard residues in protein, DNA, RNA chains [i](#)

There are no non-standard protein/DNA/RNA residues in this entry.

## 5.5 Carbohydrates [i](#)

There are no oligosaccharides in this entry.

## 5.6 Ligand geometry [i](#)

3 ligands are modelled in this entry.

In the following table, the Counts columns list the number of bonds (or angles) for which Mogul statistics could be retrieved, the number of bonds (or angles) that are observed in the model and the number of bonds (or angles) that are defined in the Chemical Component Dictionary. The Link column lists molecule types, if any, to which the group is linked. The Z score for a bond length (or angle) is the number of standard deviations the observed value is removed from the expected value. A bond length (or angle) with  $|Z| > 2$  is considered an outlier worth inspection. RMSZ is the root-mean-square of all Z scores of the bond lengths (or angles).

Mol	Type	Chain	Res	Link	Bond lengths			Bond angles		
					Counts	RMSZ	$\# Z  > 2$	Counts	RMSZ	$\# Z  > 2$
3	NPF	B	902	-	21,21,21	1.58	3 (14%)	27,30,30	2.90	8 (29%)
3	NPF	A	901	-	21,21,21	1.55	4 (19%)	27,30,30	2.84	8 (29%)
3	NPF	C	903	-	21,21,21	1.75	4 (19%)	27,30,30	3.09	8 (29%)

In the following table, the Chirals column lists the number of chiral outliers, the number of chiral centers analysed, the number of these observed in the model and the number defined in the Chemical Component Dictionary. Similar counts are reported in the Torsion and Rings columns. '-' means no outliers of that kind were identified.

Mol	Type	Chain	Res	Link	Chirals	Torsions	Rings
3	NPF	B	902	-	-	3/6/28/28	0/2/2/2
3	NPF	A	901	-	-	3/6/28/28	0/2/2/2
3	NPF	C	903	-	-	3/6/28/28	0/2/2/2

The worst 5 of 11 bond length outliers are listed below:

Mol	Chain	Res	Type	Atoms	Z	Observed(Å)	Ideal(Å)
3	C	903	NPF	O1-C1A	4.56	1.45	1.37
3	C	903	NPF	O1-C1	3.85	1.47	1.41
3	B	902	NPF	O1-C1A	3.76	1.43	1.37
3	A	901	NPF	O1-C1A	3.58	1.43	1.37
3	B	902	NPF	O1-C1	2.93	1.45	1.41

The worst 5 of 24 bond angle outliers are listed below:

Mol	Chain	Res	Type	Atoms	Z	Observed(°)	Ideal(°)
3	C	903	NPF	O1-C1-C2	10.47	122.42	107.16
3	B	902	NPF	O1-C1-C2	8.83	120.03	107.16
3	A	901	NPF	O1-C1-C2	8.65	119.76	107.16
3	B	902	NPF	C1A-O1-C1	7.60	132.02	118.15
3	A	901	NPF	C1A-O1-C1	7.08	131.08	118.15

There are no chirality outliers.

5 of 9 torsion outliers are listed below:

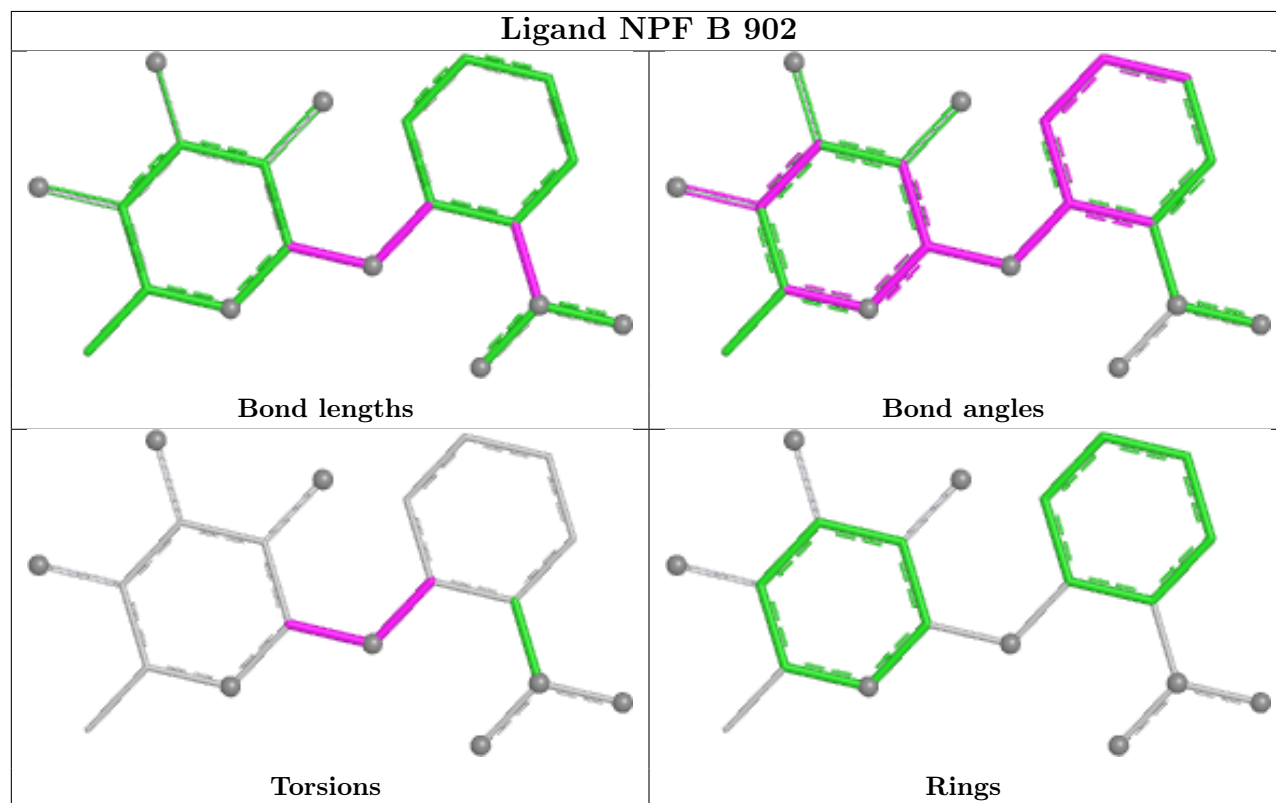
Mol	Chain	Res	Type	Atoms
3	A	901	NPF	C2-C1-O1-C1A
3	A	901	NPF	O5-C1-O1-C1A
3	B	902	NPF	C2-C1-O1-C1A
3	B	902	NPF	O5-C1-O1-C1A
3	C	903	NPF	C2-C1-O1-C1A

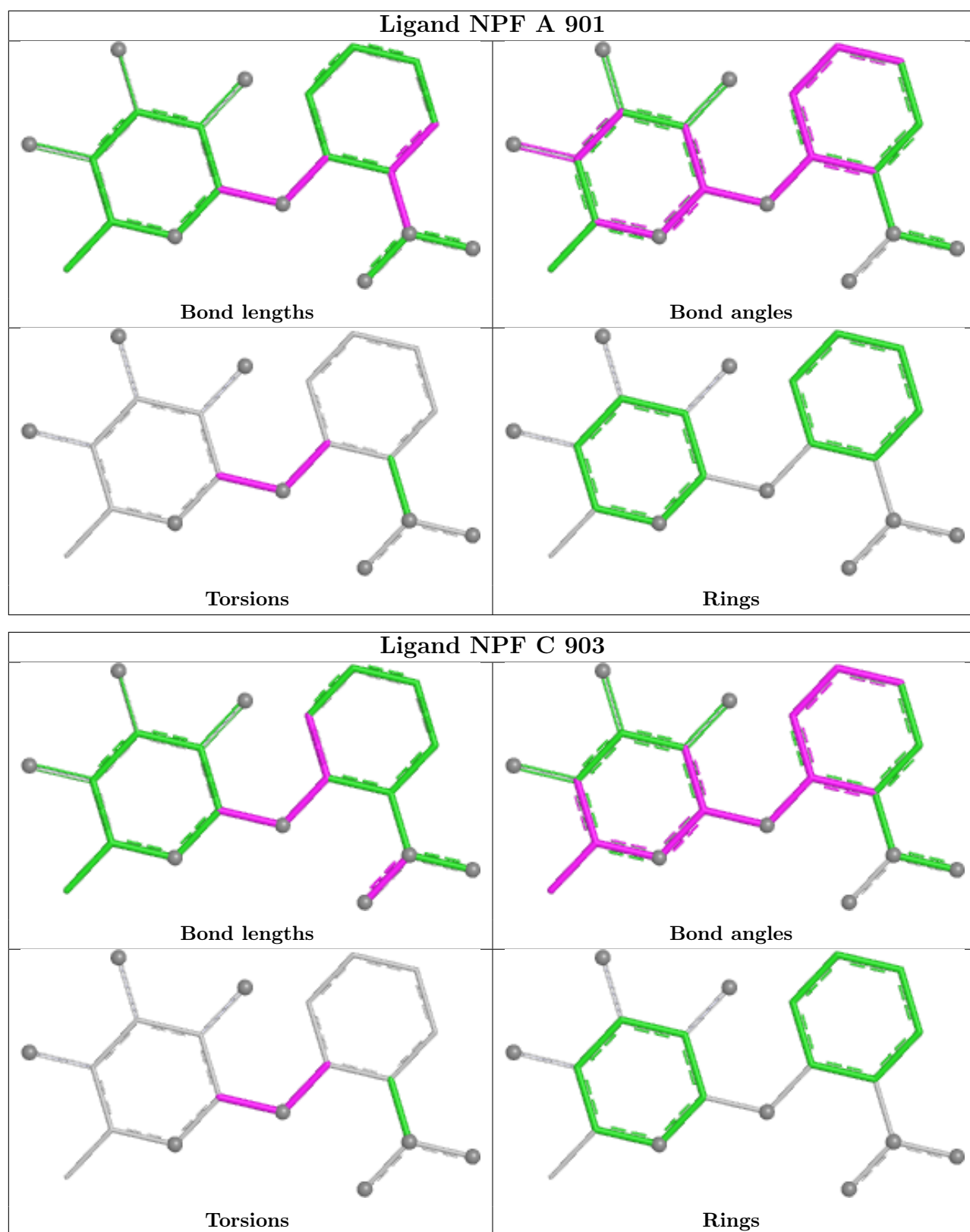
There are no ring outliers.

No monomer is involved in short contacts.

The following is a two-dimensional graphical depiction of Mogul quality analysis of bond lengths, bond angles, torsion angles, and ring geometry for all instances of the Ligand of Interest. In addition, ligands with molecular weight > 250 and outliers as shown on the validation Tables will also be included. For torsion angles, if less than 5% of the Mogul distribution of torsion angles is within 10 degrees of the torsion angle in question, then that torsion angle is considered an outlier. Any bond that is central to one or more torsion angles identified as an outlier by Mogul will be highlighted in the graph. For rings, the root-mean-square deviation (RMSD) between the ring

in question and similar rings identified by Mogul is calculated over all ring torsion angles. If the average RMSD is greater than 60 degrees and the minimal RMSD between the ring in question and any Mogul-identified rings is also greater than 60 degrees, then that ring is considered an outlier. The outliers are highlighted in purple. The color gray indicates Mogul did not find sufficient equivalents in the CSD to analyse the geometry.





## 5.7 Other polymers [i](#)

There are no such residues in this entry.

## 5.8 Polymer linkage issues ⓘ

There are no chain breaks in this entry.

## 6 Fit of model and data

### 6.1 Protein, DNA and RNA chains

EDS was not executed - this section is therefore empty.

### 6.2 Non-standard residues in protein, DNA, RNA chains

EDS was not executed - this section is therefore empty.

### 6.3 Carbohydrates

EDS was not executed - this section is therefore empty.

### 6.4 Ligands

EDS was not executed - this section is therefore empty.

### 6.5 Other polymers

EDS was not executed - this section is therefore empty.