



wwPDB X-ray Structure Validation Summary Report ⓘ

Mar 6, 2026 – 03:02 PM UTC

PDB ID : 3EDF / pdb_00003edf
Title : Structural base for cyclodextrin hydrolysis
Authors : Buedenbender, S.; Schulz, G.E.
Deposited on : 2008-09-03
Resolution : 1.65 Å(reported)

This is a wwPDB X-ray Structure Validation Summary Report for a publicly released PDB entry.

We welcome your comments at validation@mail.wwpdb.org

A user guide is available at

<https://www.wwpdb.org/validation/2017/XrayValidationReportHelp>

with specific help available everywhere you see the ⓘ symbol.

The types of validation reports are described at

<http://www.wwpdb.org/validation/2017/FAQs#types>.

The following versions of software and data (see [references ⓘ](#)) were used in the production of this report:

MolProbity	:	4-5-2 with Phenix2.0
Mogul	:	2022.3.0, CSD as543be (2022)
Xtriage (Phenix)	:	2.0
EDS	:	3.0
Percentile statistics	:	20250101.v01 (using entries in the PDB archive January 1st 2025)
CCP4	:	9.0.010 (Gargrove)
Density-Fitness	:	1.0.12
Ideal geometry (proteins)	:	Engh & Huber (2001)
Ideal geometry (DNA, RNA)	:	Parkinson et al. (1996)
Validation Pipeline (wwPDB-VP)	:	2.49

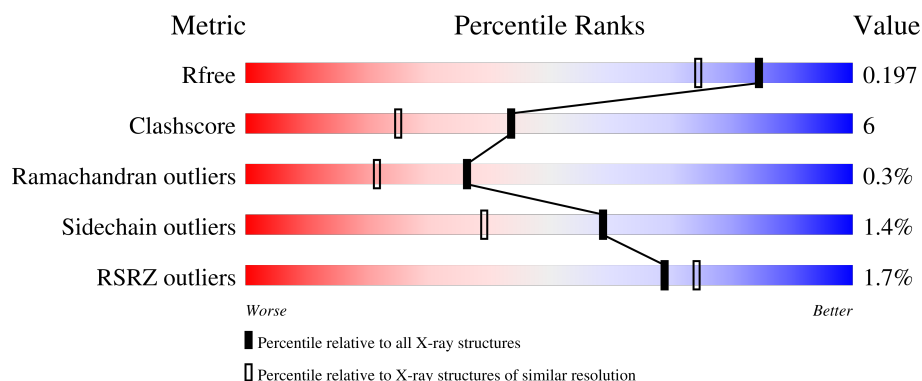
1 Overall quality at a glance

The following experimental techniques were used to determine the structure:

X-RAY DIFFRACTION

The reported resolution of this entry is 1.65 Å.

Percentile scores (ranging between 0-100) for global validation metrics of the entry are shown in the following graphic. The table shows the number of entries on which the scores are based.




Metric	Whole archive (#Entries)	Similar resolution (#Entries, resolution range(Å))
R_{free}	180053	2563 (1.66-1.66)
Clashscore	190562	2662 (1.66-1.66)
Ramachandran outliers	187476	2621 (1.66-1.66)
Sidechain outliers	187428	2621 (1.66-1.66)
RSRZ outliers	180081	2564 (1.66-1.66)

The table below summarises the geometric issues observed across the polymeric chains and their fit to the electron density. The red, orange, yellow and green segments of the lower bar indicate the fraction of residues that contain outliers for ≥ 3 , 2, 1 and 0 types of geometric quality criteria respectively. A grey segment represents the fraction of residues that are not modelled. The numeric value for each fraction is indicated below the corresponding segment, with a dot representing fractions $\leq 5\%$. The upper red bar (where present) indicates the fraction of residues that have poor fit to the electron density. The numeric value is given above the bar.

Mol	Chain	Length	Quality of chain
1	A	601	<div> <div></div> <div>91%</div> <div>8%</div> <div>.</div> </div>
1	B	601	<div> <div>2%</div> <div>88%</div> <div>10%</div> <div>..</div> </div>
2	C	6	<div> <div>17%</div> <div>83%</div> </div>
2	E	6	<div> <div>100%</div> </div>
3	D	6	<div> <div>33%</div> <div>50%</div> <div>17%</div> </div>

Continued on next page...

Continued from previous page...

Mol	Chain	Length	Quality of chain
3	F	6	

The following table lists non-polymeric compounds, carbohydrate monomers and non-standard residues in protein, DNA, RNA chains that are outliers for geometric or electron-density-fit criteria:

Mol	Type	Chain	Res	Chirality	Geometry	Clashes	Electron density
2	BGC	C	1[B]	X	-	-	-
2	BGC	C	2[B]	X	-	-	-
2	BGC	C	3[B]	X	-	-	-
2	BGC	C	4[B]	X	-	-	-
2	BGC	C	5[B]	X	-	-	-
2	BGC	C	6[B]	X	-	-	-
2	BGC	E	1[B]	X	-	X	-
2	BGC	E	2[B]	X	-	-	-
2	BGC	E	3[B]	X	-	-	-
2	BGC	E	4[B]	X	-	-	-
2	BGC	E	5[B]	X	-	-	-
2	BGC	E	6[B]	X	-	-	-

2 Entry composition [i](#)

There are 6 unique types of molecules in this entry. The entry contains 11344 atoms, of which 0 are hydrogens and 0 are deuteriums.

In the tables below, the ZeroOcc column contains the number of atoms modelled with zero occupancy, the AltConf column contains the number of residues with at least one atom in alternate conformation and the Trace column contains the number of residues modelled with at most 2 atoms.

- Molecule 1 is a protein called Cyclomaltodextrinase.

Mol	Chain	Residues	Atoms					ZeroOcc	AltConf	Trace
1	A	597	Total	C	N	O	S	0	20	0
			4847	3060	874	889	24			
1	B	597	Total	C	N	O	S	0	29	0
			4901	3098	887	891	25			

There are 4 discrepancies between the modelled and reference sequences:

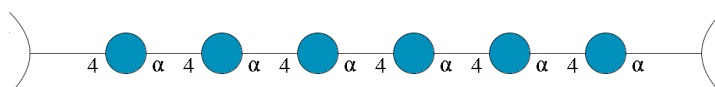
Chain	Residue	Modelled	Actual	Comment	Reference
A	49	PRO	THR	engineered mutation	UNP Q8KKG0
A	340	GLN	GLU	engineered mutation	UNP Q8KKG0
B	49	PRO	THR	engineered mutation	UNP Q8KKG0
B	340	GLN	GLU	engineered mutation	UNP Q8KKG0

- Molecule 2 is an oligosaccharide called beta-D-glucopyranose-(1-4)-beta-D-glucopyranose-(1-4)-beta-D-glucopyranose-(1-4)-beta-D-glucopyranose-(1-4)-beta-D-glucopyranose.



Mol	Chain	Residues	Atoms			ZeroOcc	AltConf	Trace
2	C	6	Total	C	O	0	6	0
			67	36	31			
2	E	6	Total	C	O	0	6	0
			67	36	31			

- Molecule 3 is an oligosaccharide called Cyclohexakis-(1-4)-(\alpha-D-glucopyranose).

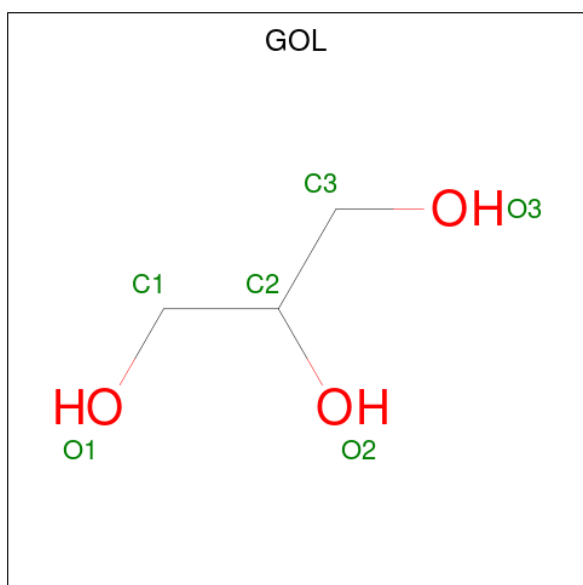


Mol	Chain	Residues	Atoms			ZeroOcc	AltConf	Trace
3	D	6	Total	C	O	0	6	0
			66	36	30			
3	F	6	Total	C	O	0	6	0
			66	36	30			

- Molecule 4 is CALCIUM ION (CCD ID: CA) (formula: Ca).

Mol	Chain	Residues	Atoms		ZeroOcc	AltConf
4	A	2	Total	Ca	0	0
			2	2		
4	B	2	Total	Ca	0	0
			2	2		

- Molecule 5 is GLYCEROL (CCD ID: GOL) (formula: C₃H₈O₃).



Mol	Chain	Residues	Atoms			ZeroOcc	AltConf
5	A	1	Total	C	O	0	0
			6	3	3		
5	A	1	Total	C	O	0	0
			6	3	3		
5	B	1	Total	C	O	0	0
			6	3	3		
5	B	1	Total	C	O	0	0
			6	3	3		

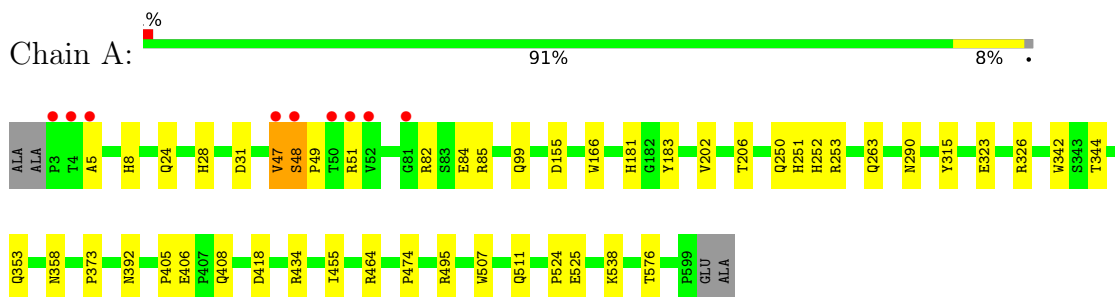
- Molecule 6 is water.

Mol	Chain	Residues	Atoms		ZeroOcc	AltConf
6	A	685	Total 685	O 685	0	0
6	B	617	Total 617	O 617	0	0

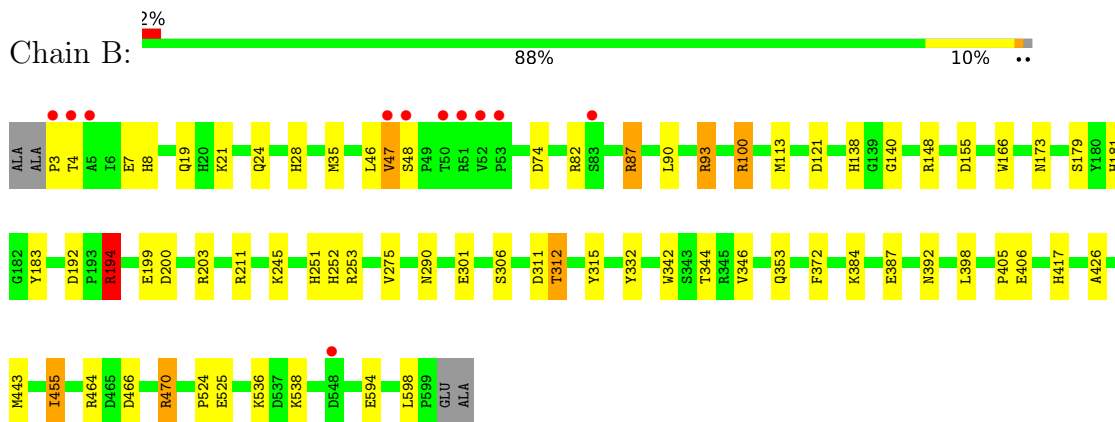
3 Residue-property plots

These plots are drawn for all protein, RNA, DNA and oligosaccharide chains in the entry. The first graphic for a chain summarises the proportions of the various outlier classes displayed in the second graphic. The second graphic shows the sequence view annotated by issues in geometry and electron density. Residues are color-coded according to the number of geometric quality criteria for which they contain at least one outlier: green = 0, yellow = 1, orange = 2 and red = 3 or more. A red dot above a residue indicates a poor fit to the electron density ($RSRZ > 2$). Stretches of 2 or more consecutive residues without any outlier are shown as a green connector. Residues present in the sample, but not in the model, are shown in grey.

- Molecule 1: Cyclomaltodextrinase



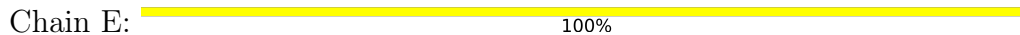
- Molecule 1: Cyclomaltodextrinase



- Molecule 2: beta-D-glucopyranose-(1-4)-beta-D-glucopyranose-(1-4)-beta-D-glucopyranose-(1-4)-beta-D-glucopyranose-(1-4)-beta-D-glucopyranose-(1-4)-beta-D-glucopyranose



- Molecule 2: beta-D-glucopyranose-(1-4)-beta-D-glucopyranose-(1-4)-beta-D-glucopyranose-(1-4)-beta-D-glucopyranose-(1-4)-beta-D-glucopyranose-(1-4)-beta-D-glucopyranose



BGC1
BGC2
BGC3
BGC4
BGC5
BGC6

- Molecule 3: Cyclohexakis-(1-4)-(alpha-D-glucopyranose)

Chain D:  33% 50% 17%

GLC1
GLC2
GLC3
GLC4
GLC5
GLC6

- Molecule 3: Cyclohexakis-(1-4)-(alpha-D-glucopyranose)

Chain F:  17% 33% 50%

GLC1
GLC2
GLC3
GLC4
GLC5
GLC6

4 Data and refinement statistics

Property	Value	Source
Space group	P 21 21 2	Depositor
Cell constants a, b, c, α , β , γ	106.54Å 111.11Å 106.60Å 90.00° 90.00° 90.00°	Depositor
Resolution (Å)	19.57 – 1.65 19.57 – 1.65	Depositor EDS
% Data completeness (in resolution range)	100.0 (19.57-1.65) 99.8 (19.57-1.65)	Depositor EDS
R_{merge}	(Not available)	Depositor
R_{sym}	0.08	Depositor
$\langle I/\sigma(I) \rangle$ ¹	2.24 (at 1.65Å)	Xtriage
Refinement program	REFMAC 5.2.0019	Depositor
R, R_{free}	0.167 , 0.201 0.164 , 0.197	Depositor DCC
R_{free} test set	3038 reflections (2.00%)	wwPDB-VP
Wilson B-factor (Å ²)	18.0	Xtriage
Anisotropy	0.028	Xtriage
Bulk solvent k_{sol} (e/Å ³), B_{sol} (Å ²)	0.36 , 45.3	EDS
L-test for twinning ²	$\langle L \rangle = 0.49$, $\langle L^2 \rangle = 0.33$	Xtriage
Estimated twinning fraction	0.009 for -h,l,k 0.010 for -k,-h,l 0.007 for l,-k,h 0.000 for l,h,k 0.000 for k,l,h	Xtriage
F_o, F_c correlation	0.97	EDS
Total number of atoms	11344	wwPDB-VP
Average B, all atoms (Å ²)	19.0	wwPDB-VP

Xtriage's analysis on translational NCS is as follows: *The largest off-origin peak in the Patterson function is 3.39% of the height of the origin peak. No significant pseudotranslation is detected.*

¹Intensities estimated from amplitudes.

²Theoretical values of $\langle |L| \rangle$, $\langle L^2 \rangle$ for acentric reflections are 0.5, 0.333 respectively for untwinned datasets, and 0.375, 0.2 for perfectly twinned datasets.

5 Model quality ⓘ

5.1 Standard geometry ⓘ

Bond lengths and bond angles in the following residue types are not validated in this section: BGC, CA, GLC, GOL

The Z score for a bond length (or angle) is the number of standard deviations the observed value is removed from the expected value. A bond length (or angle) with $|Z| > 5$ is considered an outlier worth inspection. RMSZ is the root-mean-square of all Z scores of the bond lengths (or angles).

Mol	Chain	Bond lengths		Bond angles	
		RMSZ	$\# Z > 5$	RMSZ	$\# Z > 5$
1	A	0.84	0/5075	0.85	1/6878 (0.0%)
1	B	0.82	2/5165 (0.0%)	0.88	4/6997 (0.1%)
All	All	0.83	2/10240 (0.0%)	0.86	5/13875 (0.0%)

All (2) bond length outliers are listed below:

Mol	Chain	Res	Type	Atoms	Z	Observed(Å)	Ideal(Å)
1	B	346	VAL	CA-CB	6.42	1.57	1.54
1	B	455	ILE	CA-CB	5.42	1.60	1.54

All (5) bond angle outliers are listed below:

Mol	Chain	Res	Type	Atoms	Z	Observed(°)	Ideal(°)
1	B	194	ARG	NE-CZ-NH1	-8.65	112.85	121.50
1	B	194	ARG	NE-CZ-NH2	7.41	125.87	119.20
1	B	93	ARG	NE-CZ-NH1	-7.24	114.26	121.50
1	B	93	ARG	NE-CZ-NH2	6.49	125.04	119.20
1	A	47	VAL	N-CA-C	5.54	115.74	110.53

There are no chirality outliers.

There are no planarity outliers.

5.2 Too-close contacts ⓘ

In the following table, the Non-H and H(model) columns list the number of non-hydrogen atoms and hydrogen atoms in the chain respectively. The H(added) column lists the number of hydrogen atoms added and optimized by MolProbity. The Clashes column lists the number of clashes within the asymmetric unit, whereas Symm-Clashes lists symmetry-related clashes.

Mol	Chain	Non-H	H(model)	H(added)	Clashes	Symm-Clashes
1	A	4847	0	4646	41	0
1	B	4901	0	4698	80	0
2	C	67	0	30	1	0
2	E	67	0	34	12	0
3	D	66	0	27	3	0
3	F	66	0	31	2	0
4	A	2	0	0	0	0
4	B	2	0	0	0	0
5	A	12	0	16	0	0
5	B	12	0	16	0	0
6	A	685	0	0	14	0
6	B	617	0	0	8	0
All	All	11344	0	9498	120	0

The all-atom clashscore is defined as the number of clashes found per 1000 atoms (including hydrogen atoms). The all-atom clashscore for this structure is 6.

The worst 5 of 120 close contacts within the same asymmetric unit are listed below, sorted by their clash magnitude.

Atom-1	Atom-2	Interatomic distance (Å)	Clash overlap (Å)
1:B:464[B]:ARG:HD2	2:E:1[B]:BGC:O6	1.17	1.28
1:B:342[B]:TRP:CZ3	2:E:1[B]:BGC:C5	2.13	1.25
1:B:344[B]:THR:OG1	1:B:372[B]:PHE:CE2	1.95	1.18
1:B:342[B]:TRP:CZ3	2:E:1[B]:BGC:H5	1.64	1.06
1:B:47:VAL:HG12	1:B:48:SER:H	1.23	1.01

There are no symmetry-related clashes.

5.3 Torsion angles ⓘ

5.3.1 Protein backbone ⓘ

In the following table, the Percentiles column shows the percent Ramachandran outliers of the chain as a percentile score with respect to all X-ray entries followed by that with respect to entries of similar resolution.

The Analysed column shows the number of residues for which the backbone conformation was analysed, and the total number of residues.

Mol	Chain	Analysed	Favoured	Allowed	Outliers	Percentiles
1	A	615/601 (102%)	598 (97%)	15 (2%)	2 (0%)	36 21

Continued on next page...

Continued from previous page...

Mol	Chain	Analysed	Favoured	Allowed	Outliers	Percentiles	
1	B	624/601 (104%)	611 (98%)	12 (2%)	1 (0%)	43	27
All	All	1239/1202 (103%)	1209 (98%)	27 (2%)	3 (0%)	36	27

All (3) Ramachandran outliers are listed below:

Mol	Chain	Res	Type
1	A	48	SER
1	B	47	VAL
1	A	5	ALA

5.3.2 Protein sidechains [i](#)

In the following table, the Percentiles column shows the percent sidechain outliers of the chain as a percentile score with respect to all X-ray entries followed by that with respect to entries of similar resolution.

The Analysed column shows the number of residues for which the sidechain conformation was analysed, and the total number of residues.

Mol	Chain	Analysed	Rotameric	Outliers	Percentiles	
1	A	512/493 (104%)	509 (99%)	3 (1%)	78	68
1	B	521/493 (106%)	508 (98%)	13 (2%)	42	18
All	All	1033/986 (105%)	1017 (98%)	16 (2%)	59	37

5 of 16 residues with a non-rotameric sidechain are listed below:

Mol	Chain	Res	Type
1	B	470[B]	ARG
1	B	470[A]	ARG
1	B	100	ARG
1	B	455	ILE
1	B	90	LEU

Sometimes sidechains can be flipped to improve hydrogen bonding and reduce clashes. 5 of 34 such sidechains are listed below:

Mol	Chain	Res	Type
1	B	353	GLN
1	B	436	ASN
1	B	511	GLN

Continued on next page...

Continued from previous page...

Mol	Chain	Res	Type
1	A	448	GLN
1	A	436	ASN

5.3.3 RNA ⓘ

There are no RNA molecules in this entry.

5.4 Non-standard residues in protein, DNA, RNA chains ⓘ

There are no non-standard protein/DNA/RNA residues in this entry.

5.5 Carbohydrates ⓘ

24 monosaccharides are modelled in this entry.

In the following table, the Counts columns list the number of bonds (or angles) for which Mogul statistics could be retrieved, the number of bonds (or angles) that are observed in the model and the number of bonds (or angles) that are defined in the Chemical Component Dictionary. The Link column lists molecule types, if any, to which the group is linked. The Z score for a bond length (or angle) is the number of standard deviations the observed value is removed from the expected value. A bond length (or angle) with $|Z| > 2$ is considered an outlier worth inspection. RMSZ is the root-mean-square of all Z scores of the bond lengths (or angles).

Mol	Type	Chain	Res	Link	Bond lengths			Bond angles		
					Counts	RMSZ	$\# Z > 2$	Counts	RMSZ	$\# Z > 2$
2	BGC	C	1[B]	2	12,12,12	0.56	0	17,17,17	0.69	0
2	BGC	C	2[B]	2	11,11,12	0.74	0	15,15,17	1.46	2 (13%)
2	BGC	C	3[B]	2	11,11,12	0.70	0	15,15,17	1.71	1 (6%)
2	BGC	C	4[B]	2	11,11,12	0.69	0	15,15,17	0.96	0
2	BGC	C	5[B]	2	11,11,12	0.46	0	15,15,17	1.05	1 (6%)
2	BGC	C	6[B]	2	11,11,12	0.43	0	15,15,17	1.81	2 (13%)
3	GLC	D	1[A]	3	11,11,12	0.56	0	15,15,17	1.08	0
3	GLC	D	2[A]	3	11,11,12	0.52	0	15,15,17	1.29	2 (13%)
3	GLC	D	3[A]	3	11,11,12	0.60	0	15,15,17	1.49	3 (20%)
3	GLC	D	4[A]	3	11,11,12	0.56	0	15,15,17	1.77	2 (13%)
3	GLC	D	5[A]	3	11,11,12	0.61	0	15,15,17	0.65	0
3	GLC	D	6[A]	3	11,11,12	0.42	0	15,15,17	0.69	0
2	BGC	E	1[B]	2	12,12,12	0.52	0	17,17,17	0.91	0
2	BGC	E	2[B]	2	11,11,12	0.47	0	15,15,17	1.10	1 (6%)
2	BGC	E	3[B]	2	11,11,12	0.53	0	15,15,17	1.48	1 (6%)

Mol	Type	Chain	Res	Link	Bond lengths			Bond angles		
					Counts	RMSZ	# Z > 2	Counts	RMSZ	# Z > 2
2	BGC	E	4[B]	2	11,11,12	0.53	0	15,15,17	1.04	1 (6%)
2	BGC	E	5[B]	2	11,11,12	0.70	0	15,15,17	2.68	3 (20%)
2	BGC	E	6[B]	2	11,11,12	0.58	0	15,15,17	1.64	2 (13%)
3	GLC	F	1[A]	3	11,11,12	0.67	0	15,15,17	1.75	1 (6%)
3	GLC	F	2[A]	3	11,11,12	0.71	0	15,15,17	2.14	3 (20%)
3	GLC	F	3[A]	3	11,11,12	0.67	0	15,15,17	1.28	2 (13%)
3	GLC	F	4[A]	3	11,11,12	0.73	0	15,15,17	1.12	1 (6%)
3	GLC	F	5[A]	3	11,11,12	0.55	0	15,15,17	0.85	0
3	GLC	F	6[A]	3	11,11,12	0.73	0	15,15,17	1.18	1 (6%)

In the following table, the Chirals column lists the number of chiral outliers, the number of chiral centers analysed, the number of these observed in the model and the number defined in the Chemical Component Dictionary. Similar counts are reported in the Torsion and Rings columns. '-' means no outliers of that kind were identified.

Mol	Type	Chain	Res	Link	Chirals	Torsions	Rings
2	BGC	C	1[B]	2	1/1/5/5	0/2/22/22	0/1/1/1
2	BGC	C	2[B]	2	1/1/4/5	1/2/19/22	0/1/1/1
2	BGC	C	3[B]	2	1/1/4/5	0/2/19/22	0/1/1/1
2	BGC	C	4[B]	2	1/1/4/5	0/2/19/22	0/1/1/1
2	BGC	C	5[B]	2	1/1/4/5	2/2/19/22	0/1/1/1
2	BGC	C	6[B]	2	1/1/4/5	2/2/19/22	0/1/1/1
3	GLC	D	1[A]	3	-	0/2/19/22	0/1/1/1
3	GLC	D	2[A]	3	-	0/2/19/22	0/1/1/1
3	GLC	D	3[A]	3	-	0/2/19/22	0/1/1/1
3	GLC	D	4[A]	3	-	0/2/19/22	0/1/1/1
3	GLC	D	5[A]	3	-	0/2/19/22	0/1/1/1
3	GLC	D	6[A]	3	-	0/2/19/22	0/1/1/1
2	BGC	E	1[B]	2	1/1/5/5	0/2/22/22	0/1/1/1
2	BGC	E	2[B]	2	1/1/4/5	0/2/19/22	0/1/1/1
2	BGC	E	3[B]	2	1/1/4/5	0/2/19/22	0/1/1/1
2	BGC	E	4[B]	2	1/1/4/5	0/2/19/22	0/1/1/1
2	BGC	E	5[B]	2	1/1/4/5	1/2/19/22	0/1/1/1
2	BGC	E	6[B]	2	1/1/4/5	2/2/19/22	0/1/1/1
3	GLC	F	1[A]	3	-	0/2/19/22	0/1/1/1
3	GLC	F	2[A]	3	-	0/2/19/22	0/1/1/1
3	GLC	F	3[A]	3	-	0/2/19/22	0/1/1/1
3	GLC	F	4[A]	3	-	0/2/19/22	0/1/1/1
3	GLC	F	5[A]	3	-	0/2/19/22	0/1/1/1
3	GLC	F	6[A]	3	-	0/2/19/22	0/1/1/1

There are no bond length outliers.

The worst 5 of 29 bond angle outliers are listed below:

Mol	Chain	Res	Type	Atoms	Z	Observed(°)	Ideal(°)
2	E	5[B]	BGC	C1-O5-C5	9.06	124.32	112.19
3	F	2[A]	GLC	C1-O5-C5	5.96	120.17	112.19
3	F	1[A]	GLC	C1-O5-C5	5.66	119.77	112.19
2	C	6[B]	BGC	C1-O5-C5	5.61	119.70	112.19
3	D	4[A]	GLC	C1-O5-C5	5.54	119.61	112.19

5 of 12 chirality outliers are listed below:

Mol	Chain	Res	Type	Atom
2	C	1[B]	BGC	C1
2	C	2[B]	BGC	C1
2	C	3[B]	BGC	C1
2	C	4[B]	BGC	C1
2	C	5[B]	BGC	C1

5 of 8 torsion outliers are listed below:

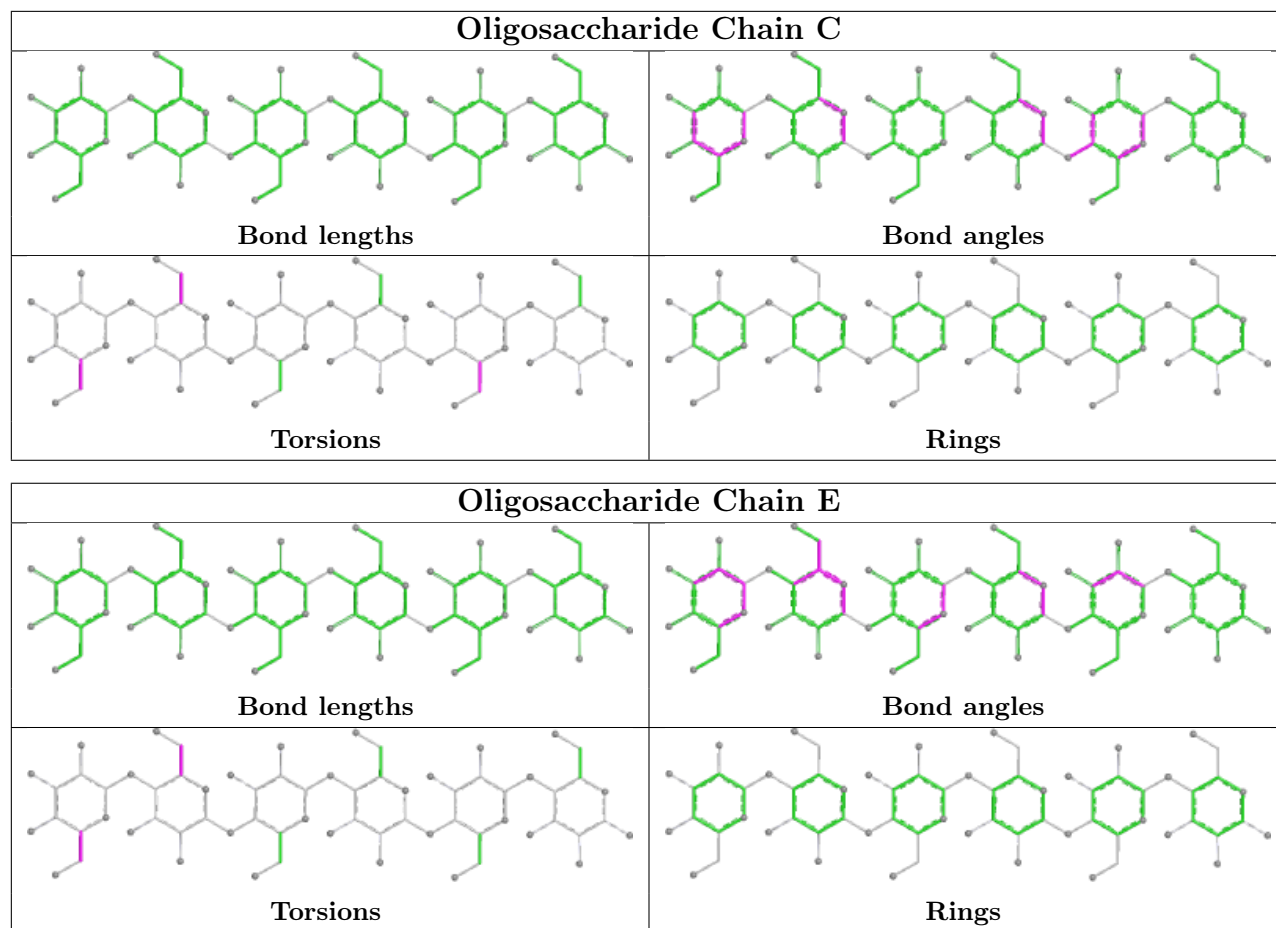
Mol	Chain	Res	Type	Atoms
2	C	6[B]	BGC	O5-C5-C6-O6
2	C	5[B]	BGC	C4-C5-C6-O6
2	C	6[B]	BGC	C4-C5-C6-O6
2	C	5[B]	BGC	O5-C5-C6-O6
2	E	5[B]	BGC	C4-C5-C6-O6

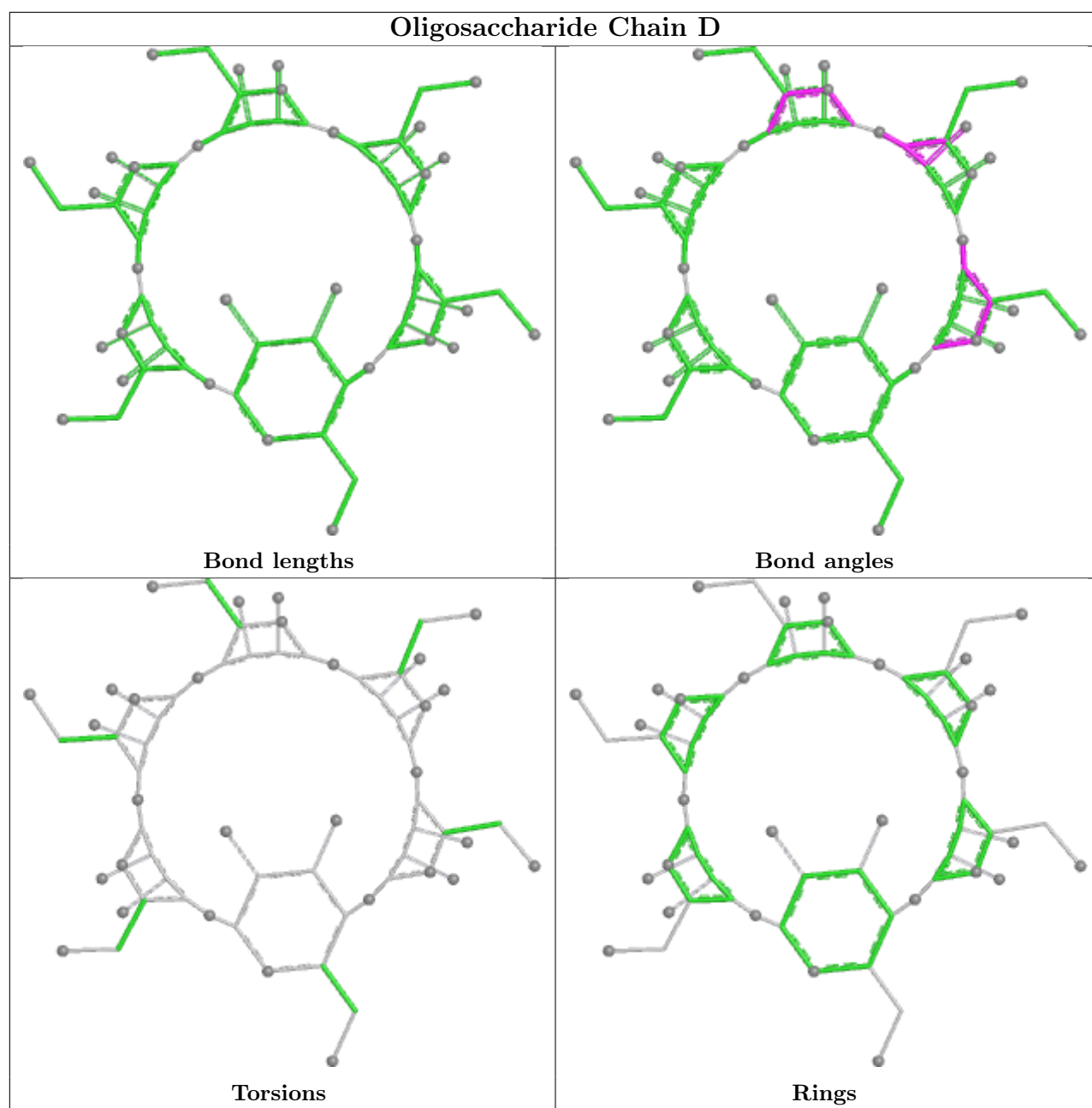
There are no ring outliers.

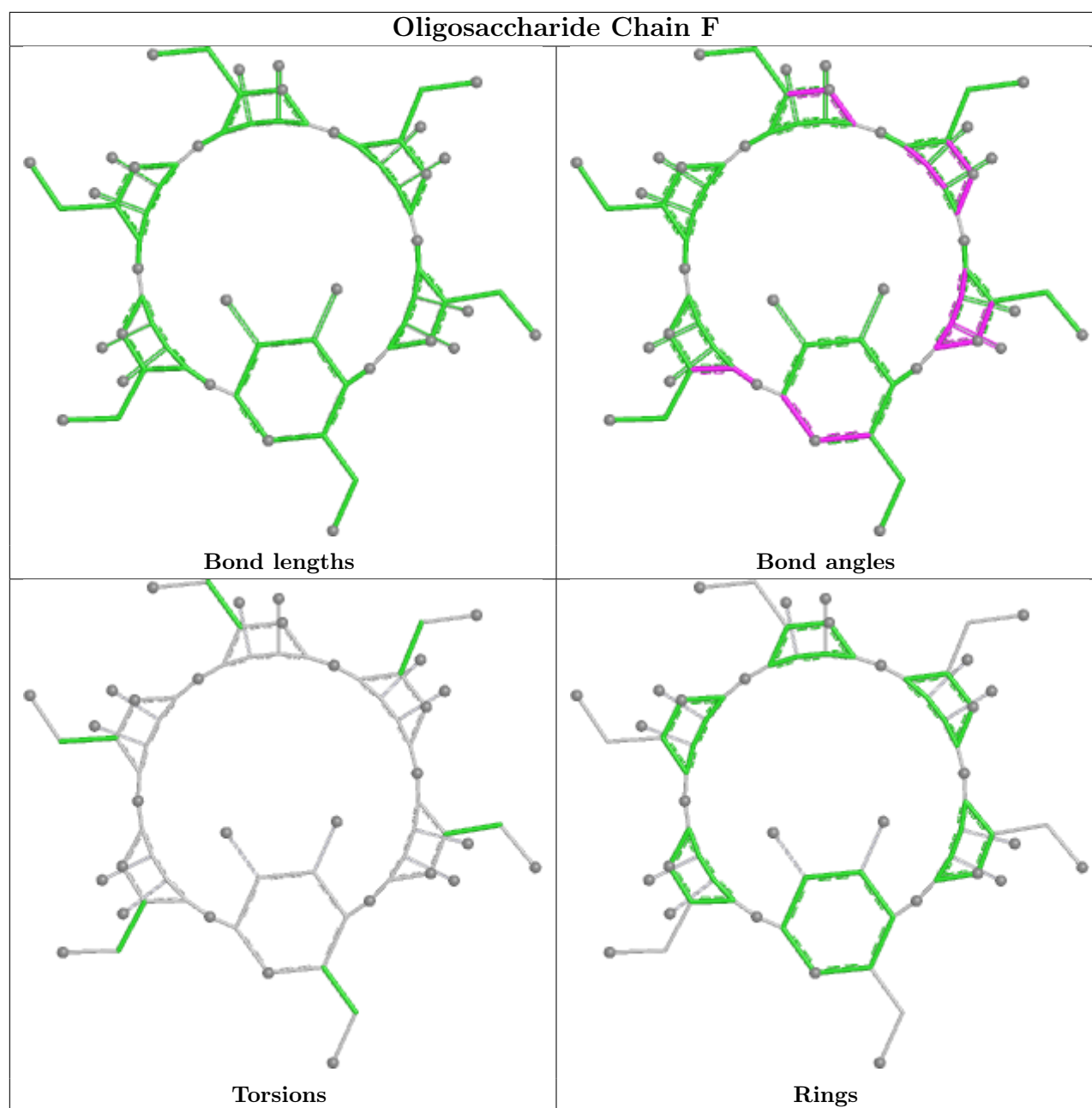
7 monomers are involved in 18 short contacts:

Mol	Chain	Res	Type	Clashes	Symm-Clashes
3	D	1[A]	GLC	2	0
2	E	1[B]	BGC	12	0
3	D	4[A]	GLC	1	0
2	C	1[B]	BGC	1	0
3	F	1[A]	GLC	1	0
3	F	4[A]	GLC	1	0
3	F	2[A]	GLC	1	0

The following is a two-dimensional graphical depiction of Mogul quality analysis of bond lengths, bond angles, torsion angles, and ring geometry for oligosaccharide.







5.6 Ligand geometry [i](#)

Of 8 ligands modelled in this entry, 4 are monoatomic - leaving 4 for Mogul analysis.

In the following table, the Counts columns list the number of bonds (or angles) for which Mogul statistics could be retrieved, the number of bonds (or angles) that are observed in the model and the number of bonds (or angles) that are defined in the Chemical Component Dictionary. The Link column lists molecule types, if any, to which the group is linked. The Z score for a bond length (or angle) is the number of standard deviations the observed value is removed from the expected value. A bond length (or angle) with $|Z| > 2$ is considered an outlier worth inspection. RMSZ is the root-mean-square of all Z scores of the bond lengths (or angles).

Mol	Type	Chain	Res	Link	Bond lengths			Bond angles		
					Counts	RMSZ	# Z > 2	Counts	RMSZ	# Z > 2
5	GOL	B	800	-	5,5,5	0.52	0	5,5,5	0.14	0
5	GOL	A	801	-	5,5,5	0.50	0	5,5,5	0.58	0
5	GOL	A	800	-	5,5,5	0.54	0	5,5,5	0.41	0
5	GOL	B	801	-	5,5,5	0.32	0	5,5,5	0.52	0

In the following table, the Chirals column lists the number of chiral outliers, the number of chiral centers analysed, the number of these observed in the model and the number defined in the Chemical Component Dictionary. Similar counts are reported in the Torsion and Rings columns. '-' means no outliers of that kind were identified.

Mol	Type	Chain	Res	Link	Chirals	Torsions	Rings
5	GOL	B	800	-	-	0/4/4/4	-
5	GOL	A	801	-	-	4/4/4/4	-
5	GOL	A	800	-	-	0/4/4/4	-
5	GOL	B	801	-	-	0/4/4/4	-

There are no bond length outliers.

There are no bond angle outliers.

There are no chirality outliers.

All (4) torsion outliers are listed below:

Mol	Chain	Res	Type	Atoms
5	A	801	GOL	C1-C2-C3-O3
5	A	801	GOL	O1-C1-C2-C3
5	A	801	GOL	O2-C2-C3-O3
5	A	801	GOL	O1-C1-C2-O2

There are no ring outliers.

No monomer is involved in short contacts.

5.7 Other polymers [i](#)

There are no such residues in this entry.

5.8 Polymer linkage issues [i](#)

There are no chain breaks in this entry.

6 Fit of model and data [i](#)

6.1 Protein, DNA and RNA chains [i](#)

In the following table, the column labelled ‘#RSRZ > 2’ contains the number (and percentage) of RSRZ outliers, followed by percent RSRZ outliers for the chain as percentile scores relative to all X-ray entries and entries of similar resolution. The OWAB column contains the minimum, median, 95th percentile and maximum values of the occupancy-weighted average B-factor per residue. The column labelled ‘Q < 0.9’ lists the number of (and percentage) of residues with an average occupancy less than 0.9.

Mol	Chain	Analysed	<RSRZ>	#RSRZ>2	OWAB(Å ²)	Q<0.9
1	A	597/601 (99%)	-0.42	9 (1%) 72 77	8, 15, 31, 54	20 (3%)
1	B	597/601 (99%)	-0.31	11 (1%) 67 73	7, 17, 35, 57	29 (4%)
All	All	1194/1202 (99%)	-0.37	20 (1%) 69 74	7, 16, 34, 57	49 (4%)

The worst 5 of 20 RSRZ outliers are listed below:

Mol	Chain	Res	Type	RSRZ
1	A	3	PRO	10.2
1	B	3	PRO	9.2
1	A	4	THR	6.2
1	B	4	THR	4.7
1	B	47	VAL	3.7

6.2 Non-standard residues in protein, DNA, RNA chains [i](#)

There are no non-standard protein/DNA/RNA residues in this entry.

6.3 Carbohydrates [i](#)

In the following table, the Atoms column lists the number of modelled atoms in the group and the number defined in the chemical component dictionary. The B-factors column lists the minimum, median, 95th percentile and maximum values of B factors of atoms in the group. The column labelled ‘Q < 0.9’ lists the number of atoms with occupancy less than 0.9.

Mol	Type	Chain	Res	Atoms	RSCC	RSR	B-factors(Å ²)	Q<0.9
2	BGC	E	6[B]	11/12	0.40	0.22	39,40,41,41	11
2	BGC	E	1[B]	12/12	0.63	0.18	14,16,17,18	12
2	BGC	E	5[B]	11/12	0.68	0.21	29,34,37,38	11
2	BGC	C	6[B]	11/12	0.72	0.13	24,26,27,27	11
2	BGC	C	1[B]	12/12	0.73	0.16	12,17,19,20	12

Continued on next page...

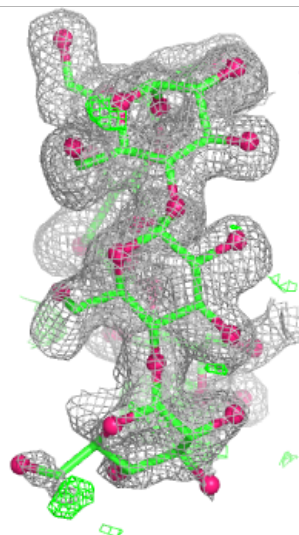
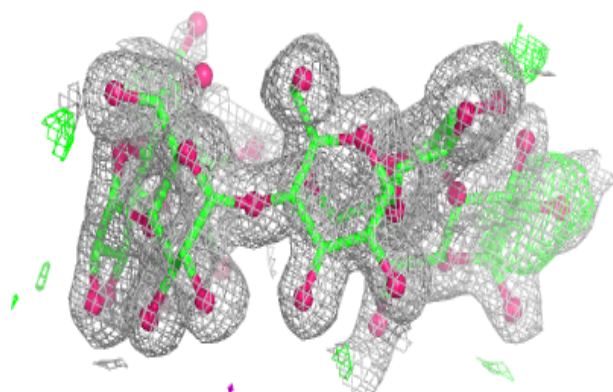
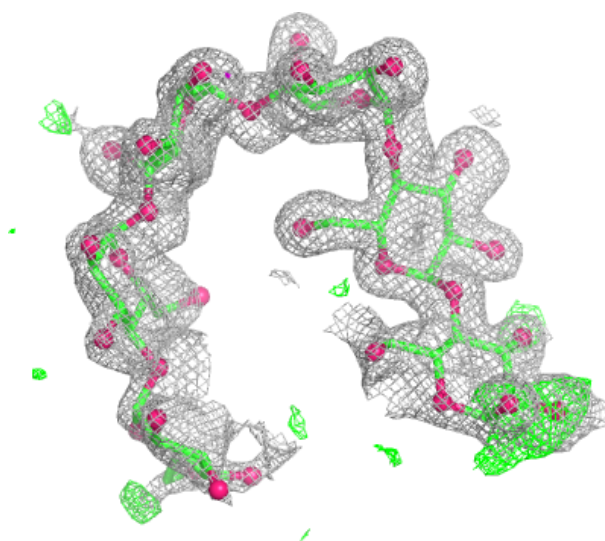
Continued from previous page...

Mol	Type	Chain	Res	Atoms	RSCC	RSR	B-factors(\AA^2)	Q<0.9
3	GLC	D	1[A]	11/12	0.78	0.13	21,22,25,26	11
3	GLC	D	2[A]	11/12	0.84	0.11	22,23,25,28	11
3	GLC	F	5[A]	11/12	0.84	0.10	20,21,22,22	11
2	BGC	E	4[B]	11/12	0.90	0.09	22,23,25,29	11
2	BGC	E	3[B]	11/12	0.90	0.09	15,17,18,20	11
3	GLC	F	6[A]	11/12	0.91	0.08	16,19,20,20	11
2	BGC	E	2[B]	11/12	0.92	0.08	13,15,16,18	11
3	GLC	F	4[A]	11/12	0.92	0.07	15,17,20,21	11
2	BGC	C	5[B]	11/12	0.93	0.07	15,19,23,25	11
3	GLC	D	6[A]	11/12	0.94	0.06	15,18,20,21	11
2	BGC	C	4[B]	11/12	0.94	0.06	11,13,15,16	11
3	GLC	F	1[A]	11/12	0.95	0.07	12,14,16,22	11
3	GLC	D	3[A]	11/12	0.95	0.07	13,17,18,19	11
3	GLC	D	5[A]	11/12	0.96	0.05	8,10,12,15	11
3	GLC	D	4[A]	11/12	0.96	0.05	10,11,13,13	11
3	GLC	F	3[A]	11/12	0.97	0.04	9,13,16,16	11
2	BGC	C	2[B]	11/12	0.97	0.06	11,14,17,17	11
2	BGC	C	3[B]	11/12	0.97	0.05	9,11,12,12	11
3	GLC	F	2[A]	11/12	0.97	0.05	10,12,13,15	11

The following is a graphical depiction of the model fit to experimental electron density for oligosaccharide. Each fit is shown from different orientation to approximate a three-dimensional view.

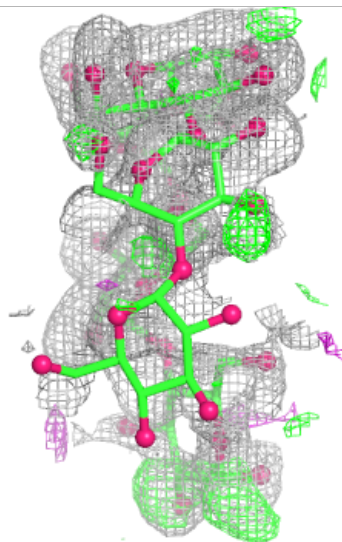
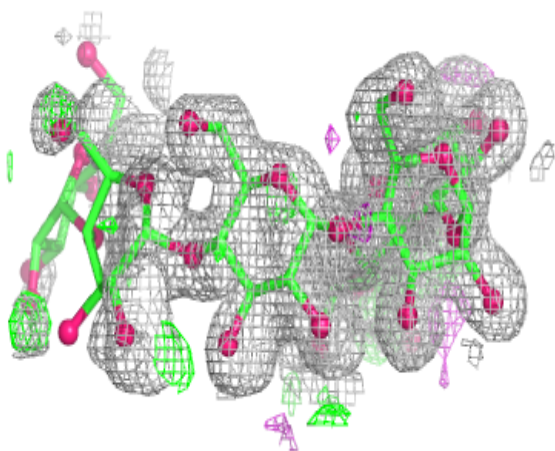
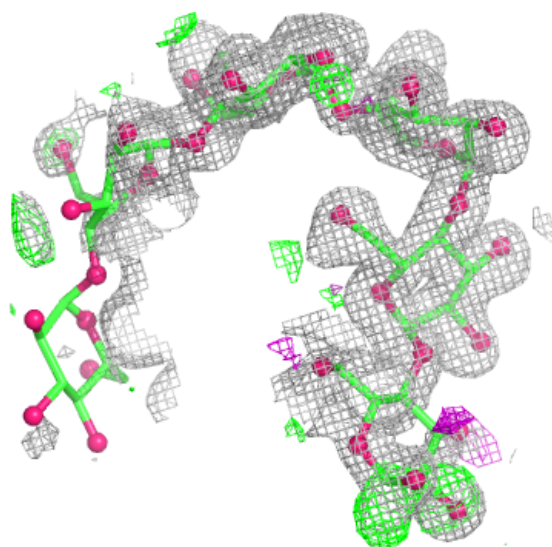
Electron density around Chain C:

$2mF_o-DF_c$ (at 0.7 rmsd) in gray
 mF_o-DF_c (at 3 rmsd) in purple (negative)
and green (positive)



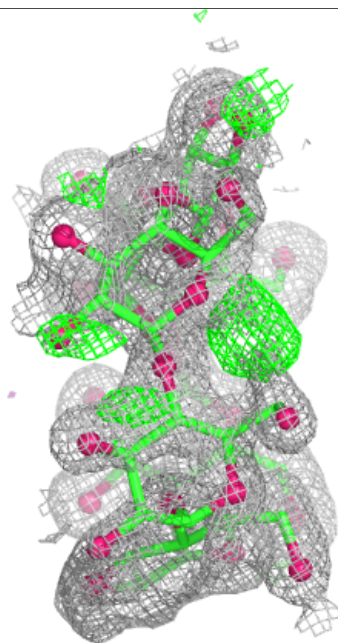
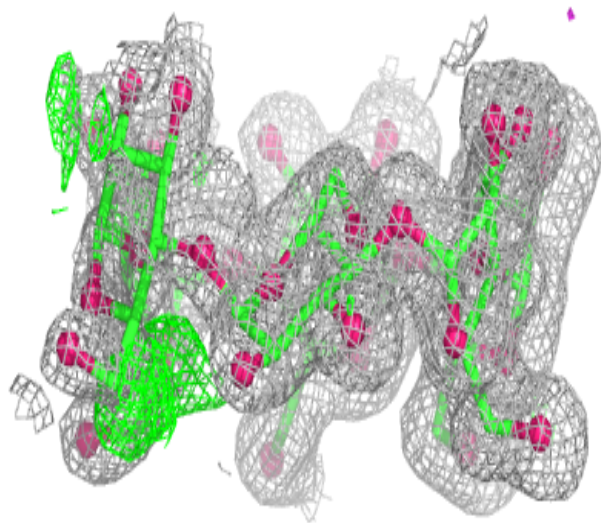
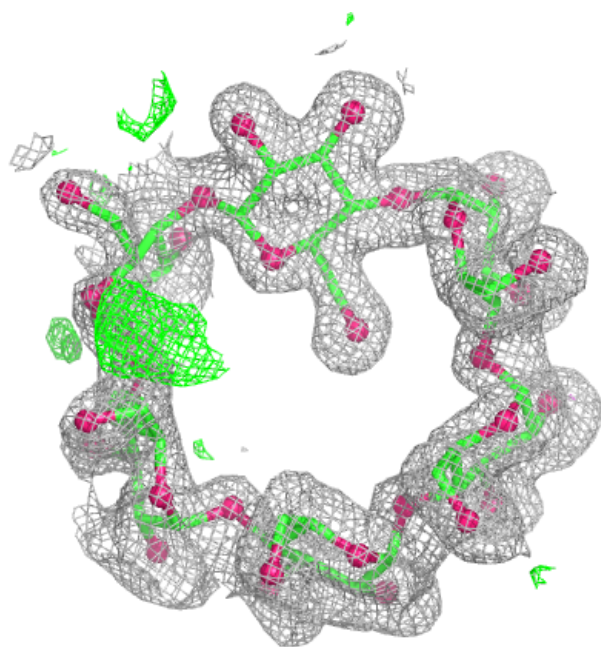
Electron density around Chain E:

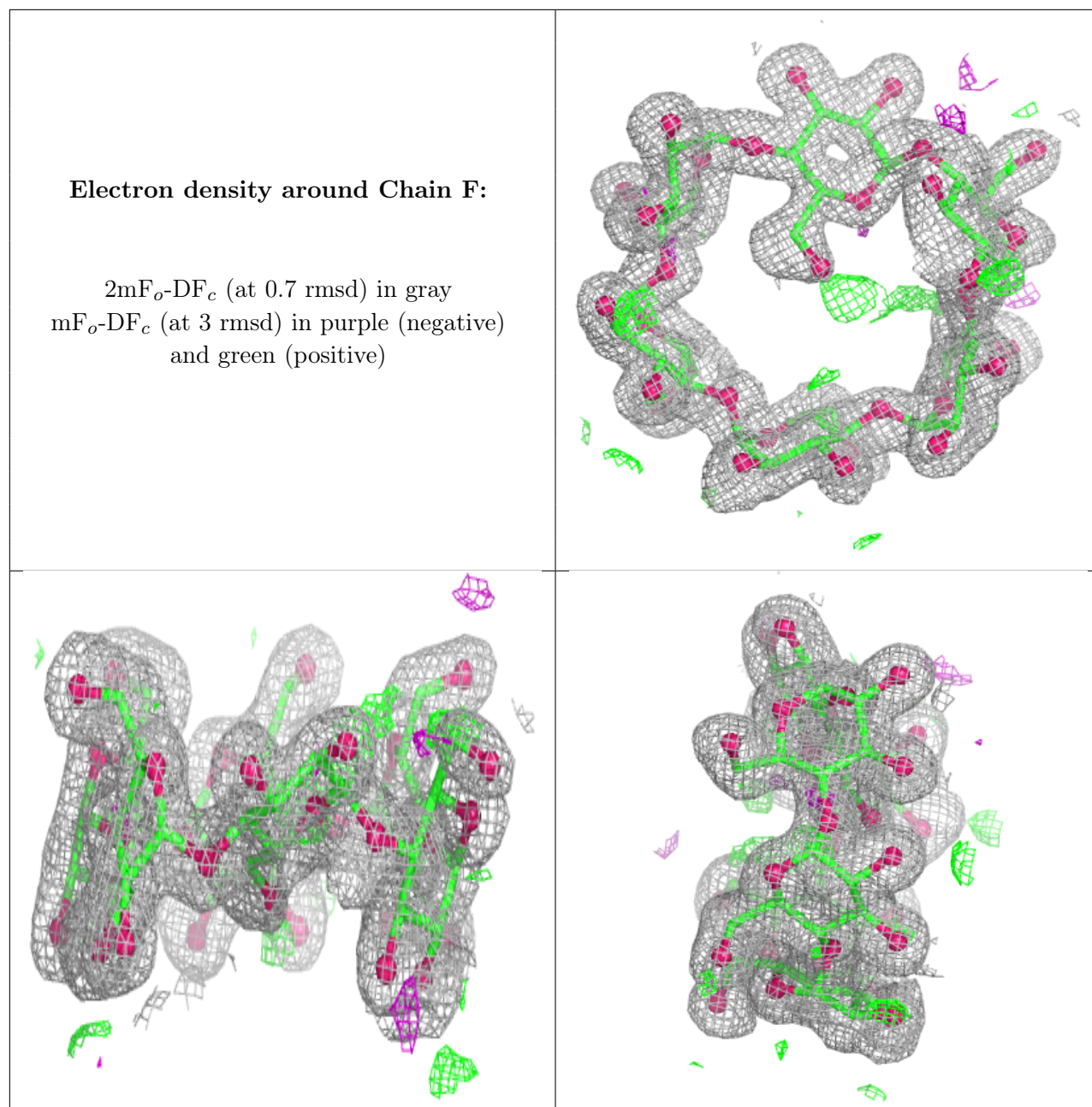
$2mF_o-DF_c$ (at 0.7 rmsd) in gray
 mF_o-DF_c (at 3 rmsd) in purple (negative)
and green (positive)



Electron density around Chain D:

$2mF_o-DF_c$ (at 0.7 rmsd) in gray
 mF_o-DF_c (at 3 rmsd) in purple (negative)
and green (positive)





6.4 Ligands [i](#)

In the following table, the Atoms column lists the number of modelled atoms in the group and the number defined in the chemical component dictionary. The B-factors column lists the minimum, median, 95th percentile and maximum values of B factors of atoms in the group. The column labelled 'Q< 0.9' lists the number of atoms with occupancy less than 0.9.

Mol	Type	Chain	Res	Atoms	RSCC	RSR	B-factors(Å ²)	Q<0.9
5	GOL	A	801	6/6	0.83	0.14	30,32,34,35	0
5	GOL	B	801	6/6	0.93	0.07	27,30,32,32	0
5	GOL	B	800	6/6	0.96	0.06	18,20,20,21	0

Continued on next page...

Continued from previous page...

Mol	Type	Chain	Res	Atoms	RSCC	RSR	B-factors(\AA^2)	Q<0.9
5	GOL	A	800	6/6	0.98	0.04	14,15,16,16	0
4	CA	B	603	1/1	0.98	0.03	19,19,19,19	0
4	CA	B	602	1/1	0.99	0.03	15,15,15,15	0
4	CA	A	602	1/1	0.99	0.02	12,12,12,12	0
4	CA	A	603	1/1	0.99	0.02	15,15,15,15	0

6.5 Other polymers [i](#)

There are no such residues in this entry.