



Full wwPDB X-ray Structure Validation Report ⓘ

Mar 6, 2026 – 07:22 PM UTC

PDB ID : 4E47 / pdb_00004e47
Title : SET7/9 in complex with inhibitor (R)-(3-(3-cyanophenyl)-1-oxo-1-(pyrrolidin-1-yl)propan-2-yl)-1,2,3,4-tetrahydroisoquinoline-6- sulfonamide and S-adenosylmethionine
Authors : Walker, J.R.; Ouyang, H.; Dong, A.; Fish, P.; Cook, A.; Barsyte, D.; Vedadi, M.; Tatlock, J.; Owen, D.; Bunnage, M.; Bountra, C.; Weigelt, J.; Edwards, A.M.; Arrowsmith, C.H.; Brown, P.J.; Structural Genomics Consortium (SGC)
Deposited on : 2012-03-12
Resolution : 2.00 Å(reported)

This is a Full wwPDB X-ray Structure Validation Report for a publicly released PDB entry.

We welcome your comments at validation@mail.wwpdb.org

A user guide is available at

<https://www.wwpdb.org/validation/2017/XrayValidationReportHelp>

with specific help available everywhere you see the ⓘ symbol.

The types of validation reports are described at

<http://www.wwpdb.org/validation/2017/FAQs#types>.

The following versions of software and data (see [references ⓘ](#)) were used in the production of this report:

MolProbity	:	4-5-2 with Phenix2.0
Mogul	:	2022.3.0, CSD as543be (2022)
Xtriage (Phenix)	:	2.0
EDS	:	3.0
Buster-report	:	wwPDB partial adaption of 1.1.7 (2018)
Percentile statistics	:	20250101.v01 (using entries in the PDB archive January 1st 2025)
CCP4	:	9.0.010 (Gargrove)
Density-Fitness	:	1.0.12
Ideal geometry (proteins)	:	Engh & Huber (2001)

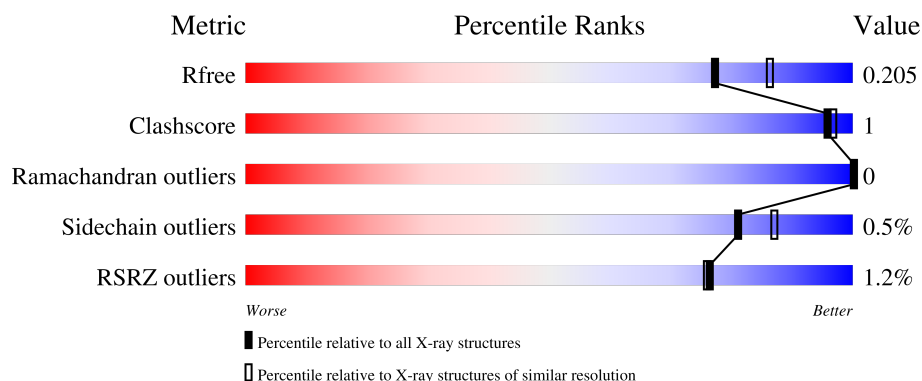
1 Overall quality at a glance

The following experimental techniques were used to determine the structure:

X-RAY DIFFRACTION

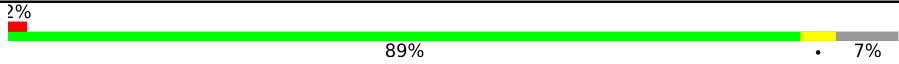
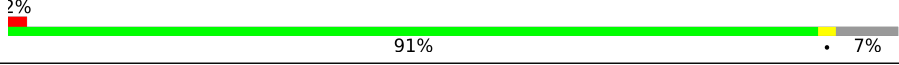

The reported resolution of this entry is 2.00 Å.

Percentile scores (ranging between 0-100) for global validation metrics of the entry are shown in the following graphic. The table shows the number of entries on which the scores are based.



Metric	Whole archive (#Entries)	Similar resolution (#Entries, resolution range(Å))
R_{free}	180053	10052 (2.00-2.00)
Clashscore	190562	11152 (2.00-2.00)
Ramachandran outliers	187476	11031 (2.00-2.00)
Sidechain outliers	187428	11029 (2.00-2.00)
RSRZ outliers	180081	10067 (2.00-2.00)

The table below summarises the geometric issues observed across the polymeric chains and their fit to the electron density. The red, orange, yellow and green segments of the lower bar indicate the fraction of residues that contain outliers for ≥ 3 , 2, 1 and 0 types of geometric quality criteria respectively. A grey segment represents the fraction of residues that are not modelled. The numeric value for each fraction is indicated below the corresponding segment, with a dot representing fractions $\leq 5\%$. The upper red bar (where present) indicates the fraction of residues that have poor fit to the electron density. The numeric value is given above the bar.

Mol	Chain	Length	Quality of chain
1	A	264	
1	B	264	
1	C	264	

Continued on next page...

Ideal geometry (DNA, RNA) : Parkinson et al. (1996)
 Validation Pipeline (wwPDB-VP) : 2.49

Continued from previous page...

Mol	Chain	Length	Quality of chain
1	D	264	<div><div><div>%</div><div><div></div></div><div>91%</div><div><div></div></div><div>5%</div></div></div>

2 Entry composition

There are 6 unique types of molecules in this entry. The entry contains 8934 atoms, of which 0 are hydrogens and 0 are deuteriums.

In the tables below, the ZeroOcc column contains the number of atoms modelled with zero occupancy, the AltConf column contains the number of residues with at least one atom in alternate conformation and the Trace column contains the number of residues modelled with at most 2 atoms.

- Molecule 1 is a protein called Histone-lysine N-methyltransferase SETD7.

Mol	Chain	Residues	Atoms					ZeroOcc	AltConf	Trace
1	A	246	Total	C	N	O	S	0	6	0
			1952	1238	322	380	12			
1	B	245	Total	C	N	O	S	0	6	0
			1951	1233	321	385	12			
1	C	245	Total	C	N	O	S	0	5	0
			1935	1228	315	380	12			
1	D	250	Total	C	N	O	S	0	6	0
			1983	1257	326	388	12			

There are 24 discrepancies between the modelled and reference sequences:

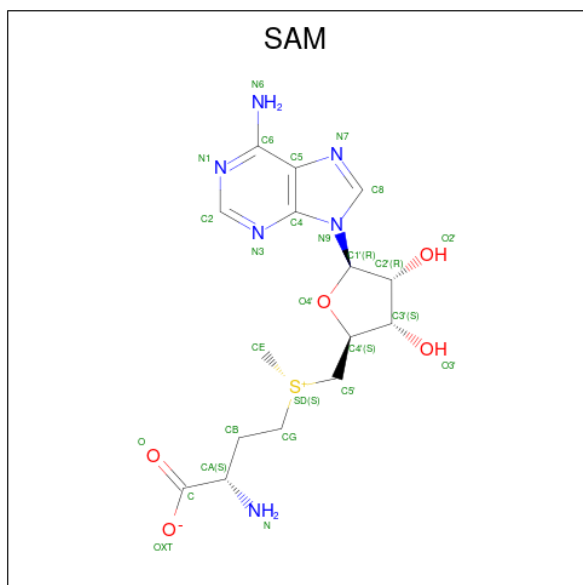
Chain	Residue	Modelled	Actual	Comment	Reference
A	367	HIS	-	expression tag	UNP Q8WTS6
A	368	HIS	-	expression tag	UNP Q8WTS6
A	369	HIS	-	expression tag	UNP Q8WTS6
A	370	HIS	-	expression tag	UNP Q8WTS6
A	371	HIS	-	expression tag	UNP Q8WTS6
A	372	HIS	-	expression tag	UNP Q8WTS6
B	367	HIS	-	expression tag	UNP Q8WTS6
B	368	HIS	-	expression tag	UNP Q8WTS6
B	369	HIS	-	expression tag	UNP Q8WTS6
B	370	HIS	-	expression tag	UNP Q8WTS6
B	371	HIS	-	expression tag	UNP Q8WTS6
B	372	HIS	-	expression tag	UNP Q8WTS6
C	367	HIS	-	expression tag	UNP Q8WTS6
C	368	HIS	-	expression tag	UNP Q8WTS6
C	369	HIS	-	expression tag	UNP Q8WTS6
C	370	HIS	-	expression tag	UNP Q8WTS6
C	371	HIS	-	expression tag	UNP Q8WTS6
C	372	HIS	-	expression tag	UNP Q8WTS6
D	367	HIS	-	expression tag	UNP Q8WTS6
D	368	HIS	-	expression tag	UNP Q8WTS6
D	369	HIS	-	expression tag	UNP Q8WTS6

Continued on next page...

Continued from previous page...

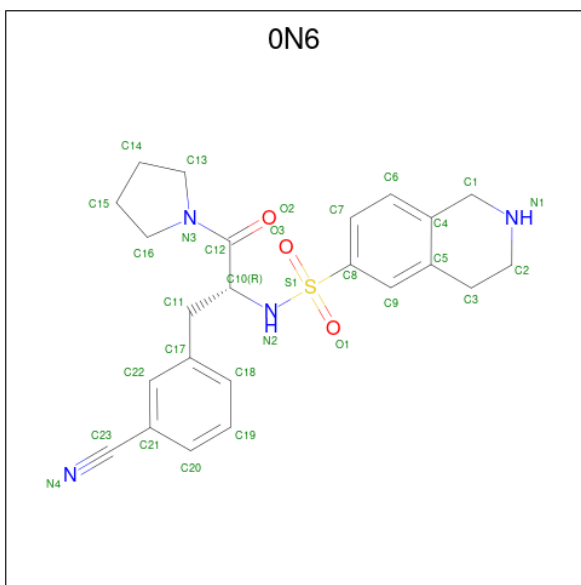
Chain	Residue	Modelled	Actual	Comment	Reference
D	370	HIS	-	expression tag	UNP Q8WTS6
D	371	HIS	-	expression tag	UNP Q8WTS6
D	372	HIS	-	expression tag	UNP Q8WTS6

- Molecule 2 is S-ADENOSYLMETHIONINE (CCD ID: SAM) (formula: $C_{15}H_{22}N_6O_5S$).



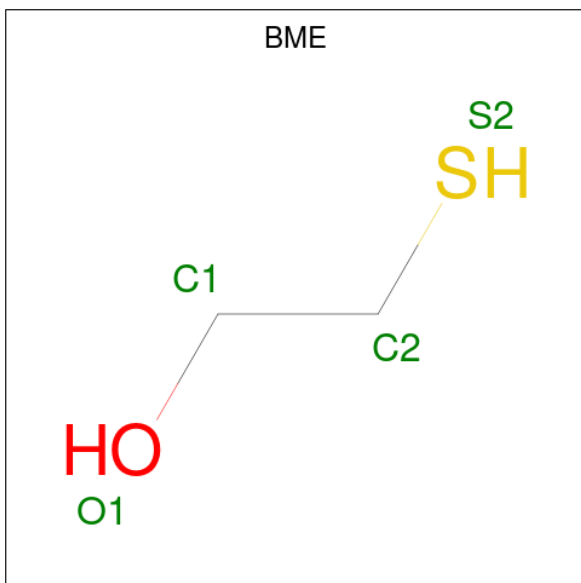
Mol	Chain	Residues	Atoms					ZeroOcc	AltConf
2	A	1	Total	C	N	O	S	0	0
			27	15	6	5	1		
2	B	1	Total	C	N	O	S	0	0
			27	15	6	5	1		
2	C	1	Total	C	N	O	S	0	0
			27	15	6	5	1		
2	D	1	Total	C	N	O	S	0	0
			27	15	6	5	1		

- Molecule 3 is (R)-(3-(3-cyanophenyl)-1-oxo-1-(pyrrolidin-1-yl)propan-2-yl)-1,2,3,4-tetrahydroisoquinoline-6-sulfonamide (CCD ID: 0N6) (formula: $C_{23}H_{26}N_4O_3S$).



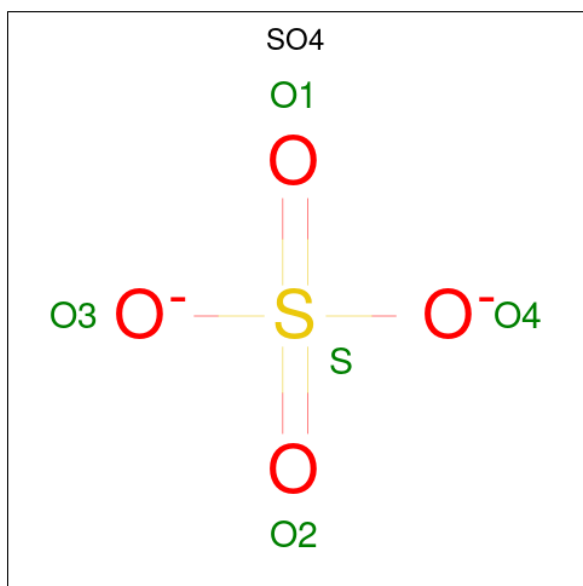
Mol	Chain	Residues	Atoms					ZeroOcc	AltConf
3	A	1	Total	C	N	O	S	0	0
			31	23	4	3	1		
3	B	1	Total	C	N	O	S	0	0
			31	23	4	3	1		
3	C	1	Total	C	N	O	S	0	0
			31	23	4	3	1		
3	D	1	Total	C	N	O	S	0	0
			31	23	4	3	1		

- Molecule 4 is BETA-MERCAPTOETHANOL (CCD ID: BME) (formula: C_2H_6OS).



Mol	Chain	Residues	Atoms				ZeroOcc	AltConf
4	A	1	Total	C	O	S	0	0
			4	2	1	1		

- Molecule 5 is SULFATE ION (CCD ID: SO4) (formula: O₄S).



Mol	Chain	Residues	Atoms			ZeroOcc	AltConf
5	A	1	Total	O	S	0	0
			5	4	1		

- Molecule 6 is water.

Mol	Chain	Residues	Atoms		ZeroOcc	AltConf
6	A	245	Total	O	0	6
			251	251		
6	B	236	Total	O	0	3
			239	239		
6	C	189	Total	O	0	2
			191	191		
6	D	187	Total	O	0	4
			191	191		

- Molecule 1: Histone-lysine N-methyltransferase SETD7



4 Data and refinement statistics

Property	Value	Source
Space group	C 2 2 21	Depositor
Cell constants a, b, c, α , β , γ	117.34Å 133.80Å 136.87Å 90.00° 90.00° 90.00°	Depositor
Resolution (Å)	39.88 – 2.00 39.88 – 2.00	Depositor EDS
% Data completeness (in resolution range)	(Not available) (39.88-2.00) 99.4 (39.88-2.00)	Depositor EDS
R_{merge}	(Not available)	Depositor
R_{sym}	0.10	Depositor
$\langle I/\sigma(I) \rangle$ ¹	2.51 (at 2.00Å)	Xtriage
Refinement program	BUSTER 2.8.0	Depositor
R, R_{free}	0.160 , 0.201 0.160 , 0.205	Depositor DCC
R_{free} test set	3632 reflections (5.02%)	wwPDB-VP
Wilson B-factor (Å ²)	25.4	Xtriage
Anisotropy	0.109	Xtriage
Bulk solvent k_{sol} (e/Å ³), B_{sol} (Å ²)	0.32 , 48.4	EDS
L-test for twinning ²	$\langle L \rangle = 0.48$, $\langle L^2 \rangle = 0.31$	Xtriage
Estimated twinning fraction	No twinning to report.	Xtriage
F_o, F_c correlation	0.96	EDS
Total number of atoms	8934	wwPDB-VP
Average B, all atoms (Å ²)	30.0	wwPDB-VP

Xtriage's analysis on translational NCS is as follows: *The largest off-origin peak in the Patterson function is 16.00% of the height of the origin peak. No significant pseudotranslation is detected.*

¹Intensities estimated from amplitudes.

²Theoretical values of $\langle |L| \rangle$, $\langle L^2 \rangle$ for acentric reflections are 0.5, 0.333 respectively for untwinned datasets, and 0.375, 0.2 for perfectly twinned datasets.

5 Model quality [i](#)

5.1 Standard geometry [i](#)

Bond lengths and bond angles in the following residue types are not validated in this section: 0N6, SAM, BME, SO4

The Z score for a bond length (or angle) is the number of standard deviations the observed value is removed from the expected value. A bond length (or angle) with $|Z| > 5$ is considered an outlier worth inspection. RMSZ is the root-mean-square of all Z scores of the bond lengths (or angles).

Mol	Chain	Bond lengths		Bond angles	
		RMSZ	$\# Z > 5$	RMSZ	$\# Z > 5$
1	A	0.86	0/2012	1.08	0/2737
1	B	0.85	0/2008	1.08	1/2731 (0.0%)
1	C	0.83	1/1999 (0.1%)	1.07	4/2720 (0.1%)
1	D	0.77	0/2046	1.06	1/2783 (0.0%)
All	All	0.83	1/8065 (0.0%)	1.07	6/10971 (0.1%)

All (1) bond length outliers are listed below:

Mol	Chain	Res	Type	Atoms	Z	Observed(Å)	Ideal(Å)
1	C	139	MET	SD-CE	-5.25	1.66	1.79

All (6) bond angle outliers are listed below:

Mol	Chain	Res	Type	Atoms	Z	Observed(°)	Ideal(°)
1	D	338	ASP	CA-CB-CG	5.54	118.14	112.60
1	C	259[A]	ASP	CA-C-N	5.29	127.37	120.28
1	C	259[A]	ASP	C-N-CA	5.29	127.37	120.28
1	C	259[B]	ASP	CA-C-N	5.29	127.37	120.28
1	C	259[B]	ASP	C-N-CA	5.29	127.37	120.28
1	B	203	THR	N-CA-C	-5.21	106.77	113.23

There are no chirality outliers.

There are no planarity outliers.

5.2 Too-close contacts [i](#)

In the following table, the Non-H and H(model) columns list the number of non-hydrogen atoms and hydrogen atoms in the chain respectively. The H(added) column lists the number of hydrogen atoms added and optimized by MolProbity. The Clashes column lists the number of clashes within

the asymmetric unit, whereas Symm-Clashes lists symmetry-related clashes.

Mol	Chain	Non-H	H(model)	H(added)	Clashes	Symm-Clashes
1	A	1952	0	1842	6	0
1	B	1951	0	1820	3	0
1	C	1935	0	1814	5	0
1	D	1983	0	1860	4	0
2	A	27	0	22	1	0
2	B	27	0	22	0	0
2	C	27	0	22	0	0
2	D	27	0	22	1	0
3	A	31	0	26	0	0
3	B	31	0	26	1	0
3	C	31	0	26	2	0
3	D	31	0	26	0	0
4	A	4	0	5	0	0
5	A	5	0	0	0	0
6	A	251	0	0	0	0
6	B	239	0	0	1	0
6	C	191	0	0	0	0
6	D	191	0	0	0	0
All	All	8934	0	7533	17	0

The all-atom clashscore is defined as the number of clashes found per 1000 atoms (including hydrogen atoms). The all-atom clashscore for this structure is 1.

All (17) close contacts within the same asymmetric unit are listed below, sorted by their clash magnitude.

Atom-1	Atom-2	Interatomic distance (Å)	Clash overlap (Å)
1:A:168:LYS:HG2	1:A:190[B]:VAL:HG12	1.81	0.62
1:B:366:LYS:NZ	6:B:1013:HOH:O	2.43	0.51
1:B:266:THR:O	3:B:801:0N6:H20	2.11	0.50
1:A:305:TYR:CZ	1:A:333[A]:VAL:HG21	2.47	0.49
1:A:255:VAL:HG21	1:A:274:VAL:HG11	1.98	0.46
1:D:339:HIS:HA	1:D:347:PRO:HB3	1.98	0.46
1:C:305:TYR:CD2	1:C:333:VAL:HG11	2.52	0.44
1:C:305:TYR:CE2	1:C:333:VAL:HG11	2.53	0.44
1:C:266:THR:O	3:C:801:0N6:H20	2.19	0.43
1:A:269:LEU:HD13	1:A:275:ILE:HD11	2.01	0.43
1:C:131:GLY:O	1:C:139:MET:HE1	2.19	0.43
1:A:195:LYS:O	1:D:358:LYS:HE2	2.18	0.43
1:C:335:TYR:CG	3:C:801:0N6:H14	2.54	0.42
1:D:280:PRO:HG2	1:D:286:LYS:HE2	2.01	0.42

Continued on next page...

Continued from previous page...

Atom-1	Atom-2	Interatomic distance (Å)	Clash overlap (Å)
1:D:293:HIS:O	2:D:800:SAM:HE2	2.19	0.42
1:A:293:HIS:O	2:A:401:SAM:HE2	2.20	0.42
1:B:144:ILE:HB	1:B:159:PHE:CD2	2.56	0.40

There are no symmetry-related clashes.

5.3 Torsion angles [i](#)

5.3.1 Protein backbone [i](#)

In the following table, the Percentiles column shows the percent Ramachandran outliers of the chain as a percentile score with respect to all X-ray entries followed by that with respect to entries of similar resolution.

The Analysed column shows the number of residues for which the backbone conformation was analysed, and the total number of residues.

Mol	Chain	Analysed	Favoured	Allowed	Outliers	Percentiles	
1	A	248/264 (94%)	240 (97%)	8 (3%)	0	100	100
1	B	247/264 (94%)	238 (96%)	9 (4%)	0	100	100
1	C	246/264 (93%)	238 (97%)	8 (3%)	0	100	100
1	D	252/264 (96%)	247 (98%)	5 (2%)	0	100	100
All	All	993/1056 (94%)	963 (97%)	30 (3%)	0	100	100

There are no Ramachandran outliers to report.

5.3.2 Protein sidechains [i](#)

In the following table, the Percentiles column shows the percent sidechain outliers of the chain as a percentile score with respect to all X-ray entries followed by that with respect to entries of similar resolution.

The Analysed column shows the number of residues for which the sidechain conformation was analysed, and the total number of residues.

Mol	Chain	Analysed	Rotameric	Outliers	Percentiles	
1	A	211/227 (93%)	211 (100%)	0	100	100
1	B	211/227 (93%)	210 (100%)	1 (0%)	81	87

Continued on next page...

Continued from previous page...

Mol	Chain	Analysed	Rotameric	Outliers	Percentiles	
1	C	210/227 (92%)	209 (100%)	1 (0%)	81	87
1	D	215/227 (95%)	212 (99%)	3 (1%)	59	66
All	All	847/908 (93%)	842 (99%)	5 (1%)	81	85

All (5) residues with a non-rotameric sidechain are listed below:

Mol	Chain	Res	Type
1	B	304	ILE
1	C	304	ILE
1	D	190[A]	VAL
1	D	190[B]	VAL
1	D	304	ILE

Sometimes sidechains can be flipped to improve hydrogen bonding and reduce clashes. All (4) such sidechains are listed below:

Mol	Chain	Res	Type
1	C	246	ASN
1	C	339	HIS
1	D	181	HIS
1	D	188	ASN

5.3.3 RNA [i](#)

There are no RNA molecules in this entry.

5.4 Non-standard residues in protein, DNA, RNA chains [i](#)

There are no non-standard protein/DNA/RNA residues in this entry.

5.5 Carbohydrates [i](#)

There are no oligosaccharides in this entry.

5.6 Ligand geometry [i](#)

10 ligands are modelled in this entry.

In the following table, the Counts columns list the number of bonds (or angles) for which Mogul statistics could be retrieved, the number of bonds (or angles) that are observed in the model and the number of bonds (or angles) that are defined in the Chemical Component Dictionary. The Link column lists molecule types, if any, to which the group is linked. The Z score for a bond length (or angle) is the number of standard deviations the observed value is removed from the expected value. A bond length (or angle) with $|Z| > 2$ is considered an outlier worth inspection. RMSZ is the root-mean-square of all Z scores of the bond lengths (or angles).

Mol	Type	Chain	Res	Link	Bond lengths			Bond angles		
					Counts	RMSZ	# $ Z > 2$	Counts	RMSZ	# $ Z > 2$
4	BME	A	403	1	3,3,3	0.44	0	2,2,2	0.33	0
2	SAM	A	401	-	27,29,29	1.53	5 (18%)	34,42,42	1.81	10 (29%)
3	ON6	A	402	-	34,34,34	1.86	4 (11%)	47,48,48	1.51	4 (8%)
3	ON6	B	801	-	34,34,34	1.48	3 (8%)	47,48,48	1.29	4 (8%)
5	SO4	A	404	-	4,4,4	0.35	0	6,6,6	0.06	0
2	SAM	C	800	-	27,29,29	1.27	4 (14%)	34,42,42	2.18	9 (26%)
2	SAM	B	800	-	27,29,29	1.44	6 (22%)	34,42,42	2.29	11 (32%)
3	ON6	D	801	-	34,34,34	1.63	3 (8%)	47,48,48	1.44	5 (10%)
2	SAM	D	800	-	27,29,29	1.27	2 (7%)	34,42,42	2.15	10 (29%)
3	ON6	C	801	-	34,34,34	1.78	3 (8%)	47,48,48	1.31	3 (6%)

In the following table, the Chirals column lists the number of chiral outliers, the number of chiral centers analysed, the number of these observed in the model and the number defined in the Chemical Component Dictionary. Similar counts are reported in the Torsion and Rings columns. '-' means no outliers of that kind were identified.

Mol	Type	Chain	Res	Link	Chirals	Torsions	Rings
4	BME	A	403	1	-	1/1/1/1	-
2	SAM	A	401	-	-	2/17/33/33	0/3/3/3
3	ON6	A	402	-	-	0/25/39/39	0/4/4/4
3	ON6	B	801	-	-	0/25/39/39	0/4/4/4
2	SAM	C	800	-	-	4/17/33/33	0/3/3/3
2	SAM	B	800	-	-	3/17/33/33	0/3/3/3
3	ON6	D	801	-	-	0/25/39/39	0/4/4/4
2	SAM	D	800	-	-	2/17/33/33	0/3/3/3
3	ON6	C	801	-	-	0/25/39/39	0/4/4/4

All (30) bond length outliers are listed below:

Mol	Chain	Res	Type	Atoms	Z	Observed(Å)	Ideal(Å)
3	C	801	ON6	O1-S1	7.44	1.52	1.43
3	A	402	ON6	O3-S1	6.49	1.51	1.43

Continued on next page...

Continued from previous page...

Mol	Chain	Res	Type	Atoms	Z	Observed(Å)	Ideal(Å)
3	A	402	0N6	O1-S1	6.28	1.50	1.43
3	D	801	0N6	O1-S1	6.16	1.50	1.43
3	D	801	0N6	O3-S1	5.48	1.49	1.43
3	B	801	0N6	O1-S1	4.82	1.49	1.43
3	B	801	0N6	O3-S1	4.81	1.49	1.43
3	C	801	0N6	O3-S1	4.54	1.48	1.43
2	A	401	SAM	C6-N6	4.02	1.44	1.34
3	A	402	0N6	S1-N2	3.89	1.68	1.61
3	C	801	0N6	S1-N2	3.62	1.67	1.61
2	D	800	SAM	C5-C4	3.43	1.45	1.39
2	B	800	SAM	C6-N6	3.35	1.42	1.34
2	A	401	SAM	C5-C4	3.23	1.44	1.39
3	B	801	0N6	S1-N2	3.17	1.67	1.61
2	C	800	SAM	C8-N7	-2.87	1.26	1.31
2	D	800	SAM	C8-N7	-2.83	1.26	1.31
2	C	800	SAM	C6-N6	2.80	1.41	1.34
2	B	800	SAM	C5-C4	2.74	1.44	1.39
2	B	800	SAM	CB-CA	2.51	1.58	1.53
2	A	401	SAM	OXT-C	-2.51	1.22	1.30
2	B	800	SAM	OXT-C	-2.37	1.23	1.30
2	C	800	SAM	OXT-C	-2.36	1.23	1.30
2	A	401	SAM	CG-CB	2.22	1.58	1.51
3	A	402	0N6	C3-C5	2.21	1.54	1.51
2	B	800	SAM	C2-N1	2.20	1.37	1.33
2	B	800	SAM	C4-N3	2.17	1.38	1.34
2	A	401	SAM	C6-N1	2.13	1.41	1.35
2	C	800	SAM	C8-N9	-2.04	1.34	1.37
3	D	801	0N6	S1-N2	2.04	1.65	1.61

All (56) bond angle outliers are listed below:

Mol	Chain	Res	Type	Atoms	Z	Observed(°)	Ideal(°)
3	A	402	0N6	O3-S1-O1	-7.33	110.62	119.52
3	D	801	0N6	O3-S1-O1	-7.05	110.95	119.52
3	C	801	0N6	O3-S1-O1	-6.01	112.22	119.52
2	C	800	SAM	N3-C2-N1	-5.89	119.66	128.58
3	B	801	0N6	O3-S1-O1	-5.52	112.81	119.52
2	D	800	SAM	N3-C2-N1	-5.41	120.39	128.58
2	B	800	SAM	C5-N7-C8	4.84	111.05	103.45
2	B	800	SAM	N3-C2-N1	-4.64	121.56	128.58
2	B	800	SAM	N3-C4-N9	4.40	134.65	127.17
2	D	800	SAM	N3-C4-N9	4.35	134.57	127.17

Continued on next page...

Continued from previous page...

Mol	Chain	Res	Type	Atoms	Z	Observed(°)	Ideal(°)
2	C	800	SAM	N3-C4-N9	4.30	134.47	127.17
2	C	800	SAM	C5-N7-C8	4.25	110.12	103.45
2	D	800	SAM	C5-C4-N3	-4.15	121.00	126.72
2	D	800	SAM	C5-N7-C8	4.01	109.75	103.45
2	B	800	SAM	C5-C4-N3	-3.95	121.28	126.72
2	A	401	SAM	C5-C4-N3	-3.92	121.32	126.72
2	B	800	SAM	C4-C5-N7	-3.90	106.12	110.58
2	D	800	SAM	C2-N3-C4	3.82	121.15	111.83
2	C	800	SAM	C2-N3-C4	3.81	121.14	111.83
2	C	800	SAM	C5-C4-N3	-3.77	121.53	126.72
2	A	401	SAM	N3-C4-N9	3.57	133.23	127.17
2	B	800	SAM	C4-N9-C8	3.49	109.40	105.74
2	B	800	SAM	C2-N1-C6	3.48	124.44	118.73
2	D	800	SAM	C4-C5-N7	-3.42	106.68	110.58
2	A	401	SAM	N3-C2-N1	-3.40	123.44	128.58
2	A	401	SAM	C5-N7-C8	3.37	108.74	103.45
3	A	402	ON6	C11-C10-N2	-3.34	106.58	110.64
2	C	800	SAM	C4-N9-C8	3.30	109.20	105.74
2	C	800	SAM	C4-C5-N7	-3.26	106.86	110.58
2	B	800	SAM	N9-C8-N7	-3.22	109.37	113.94
2	D	800	SAM	C3'-C2'-C1'	-3.08	95.63	101.46
2	C	800	SAM	N9-C8-N7	-2.91	109.81	113.94
3	D	801	ON6	C8-S1-N2	2.89	111.75	107.79
2	D	800	SAM	C2-N1-C6	2.81	123.35	118.73
2	B	800	SAM	C2-N3-C4	2.79	118.65	111.83
3	D	801	ON6	C9-C8-S1	2.70	121.83	119.06
2	C	800	SAM	C2-N1-C6	2.69	123.15	118.73
2	A	401	SAM	C2-N3-C4	2.67	118.34	111.83
3	A	402	ON6	C9-C8-S1	2.60	121.72	119.06
3	A	402	ON6	C8-S1-N2	2.60	111.35	107.79
2	A	401	SAM	CB-CA-N	-2.58	103.41	110.12
3	B	801	ON6	O1-S1-N2	2.55	111.52	106.88
3	B	801	ON6	C8-S1-N2	2.52	111.25	107.79
2	A	401	SAM	N6-C6-N1	2.51	123.96	118.38
3	C	801	ON6	C10-N2-S1	-2.50	115.80	121.30
2	D	800	SAM	C6-C5-N7	2.48	136.87	132.09
2	A	401	SAM	N9-C8-N7	-2.45	110.45	113.94
3	C	801	ON6	C11-C10-N2	-2.38	107.75	110.64
2	A	401	SAM	C4-C5-N7	-2.23	108.03	110.58
3	D	801	ON6	C10-N2-S1	-2.19	116.48	121.30
2	D	800	SAM	C2'-C1'-N9	2.17	118.69	113.30
2	B	800	SAM	O4'-C1'-N9	2.12	112.16	108.09

Continued on next page...

Continued from previous page...

Mol	Chain	Res	Type	Atoms	Z	Observed(°)	Ideal(°)
2	B	800	SAM	OXT-C-O	-2.09	119.33	124.08
3	B	801	0N6	C10-N2-S1	-2.08	116.73	121.30
3	D	801	0N6	O2-C12-N3	-2.03	119.18	121.61
2	A	401	SAM	C2-N1-C6	2.01	122.04	118.73

There are no chirality outliers.

All (12) torsion outliers are listed below:

Mol	Chain	Res	Type	Atoms
2	A	401	SAM	CB-CG-SD-CE
2	A	401	SAM	CB-CG-SD-C5'
2	B	800	SAM	CB-CG-SD-CE
2	B	800	SAM	CB-CG-SD-C5'
2	C	800	SAM	CB-CG-SD-CE
2	C	800	SAM	CB-CG-SD-C5'
2	D	800	SAM	CB-CG-SD-CE
2	D	800	SAM	CB-CG-SD-C5'
4	A	403	BME	O1-C1-C2-S2
2	C	800	SAM	OXT-C-CA-CB
2	C	800	SAM	O-C-CA-CB
2	B	800	SAM	OXT-C-CA-CB

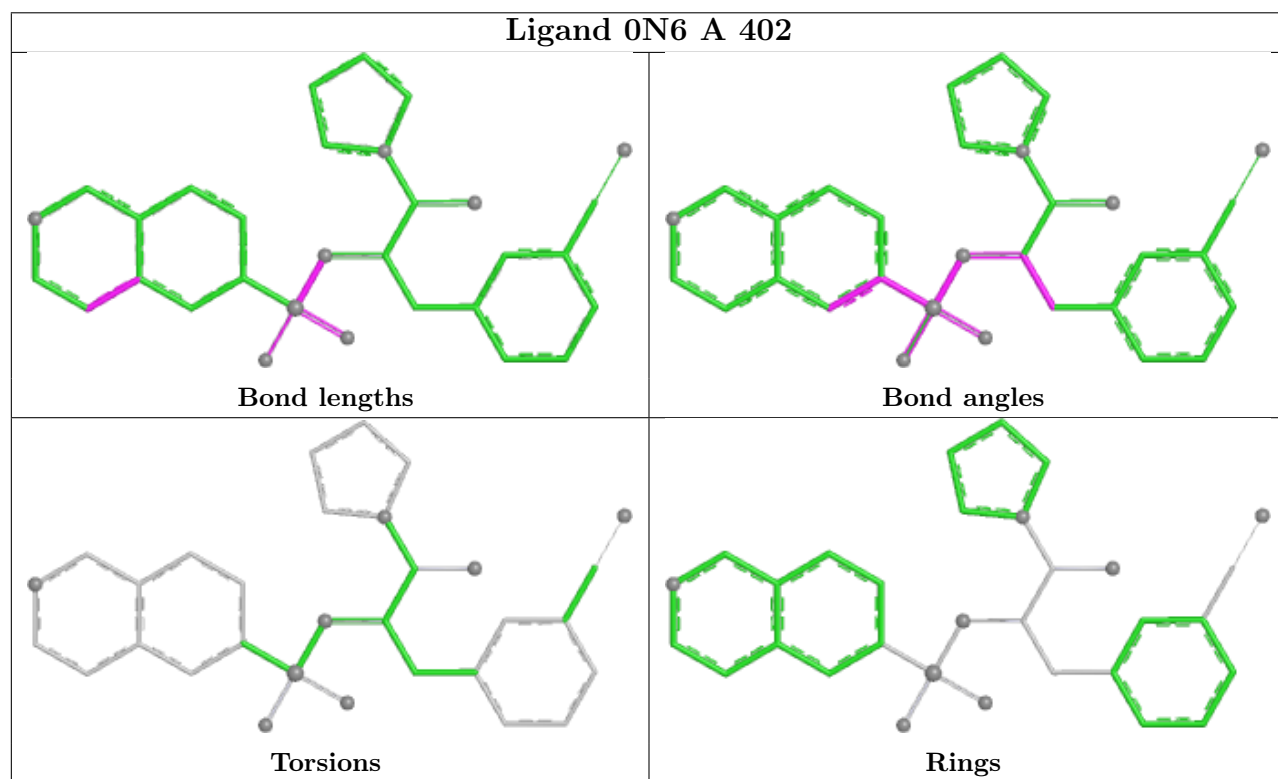
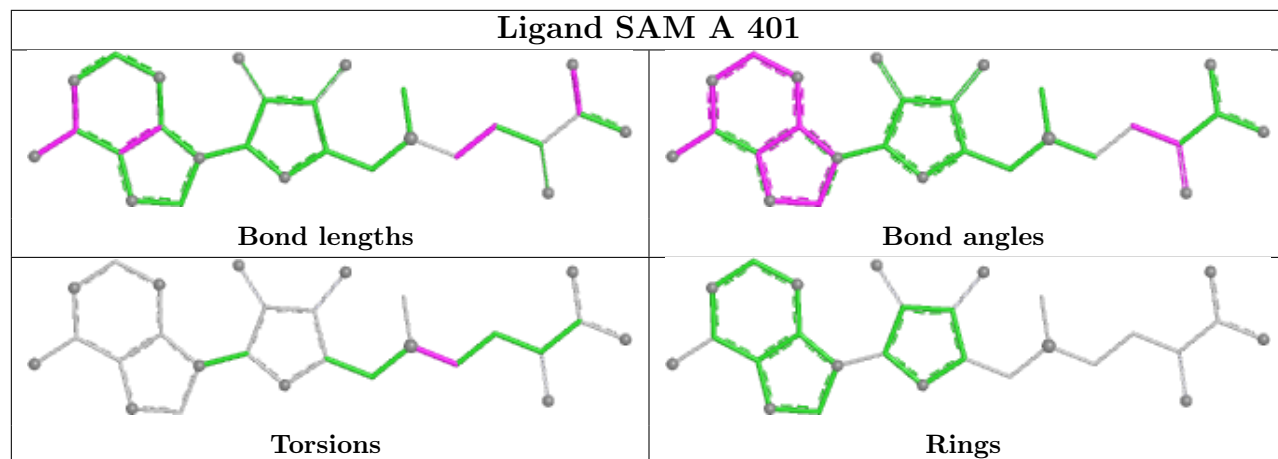
There are no ring outliers.

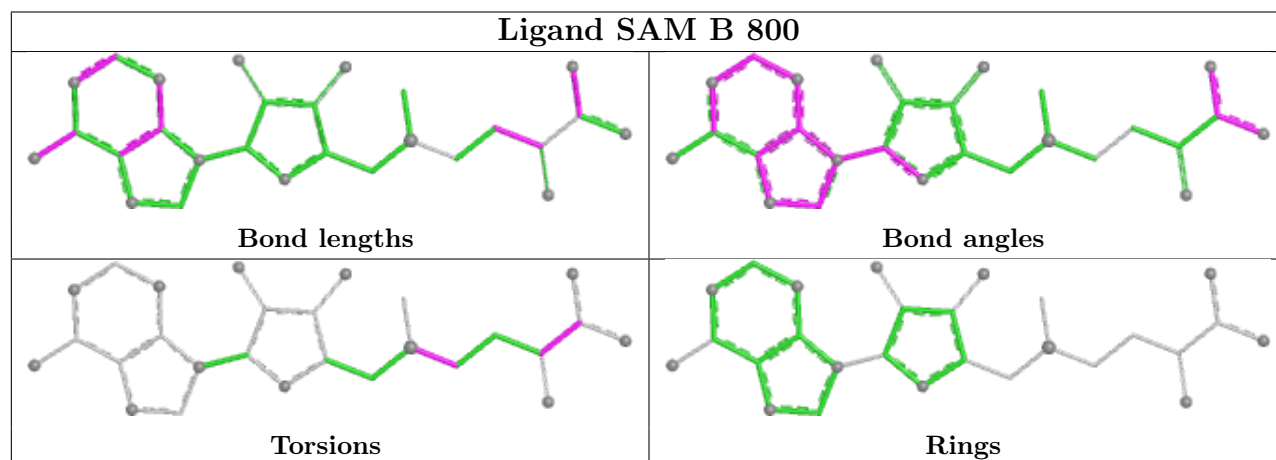
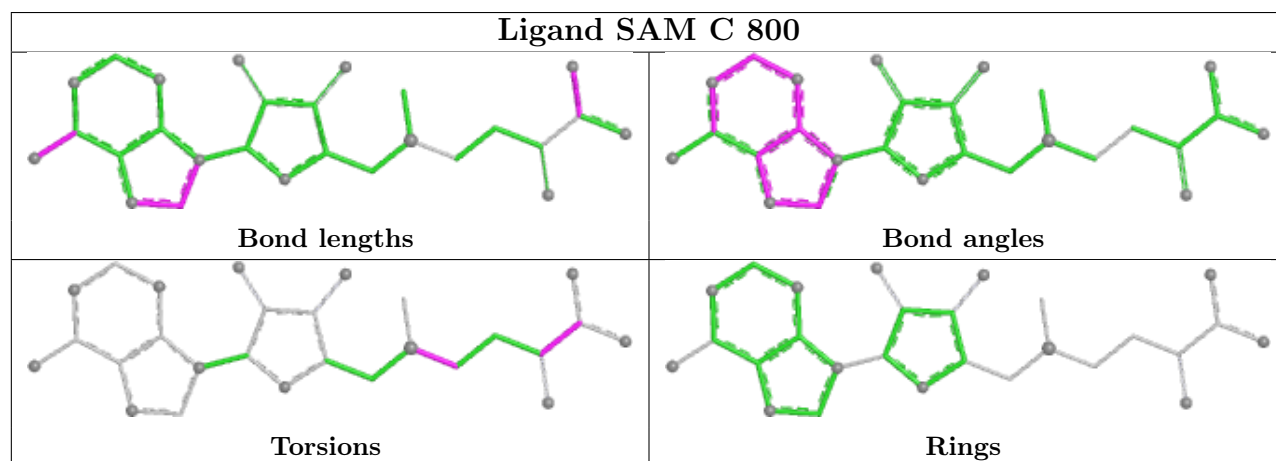
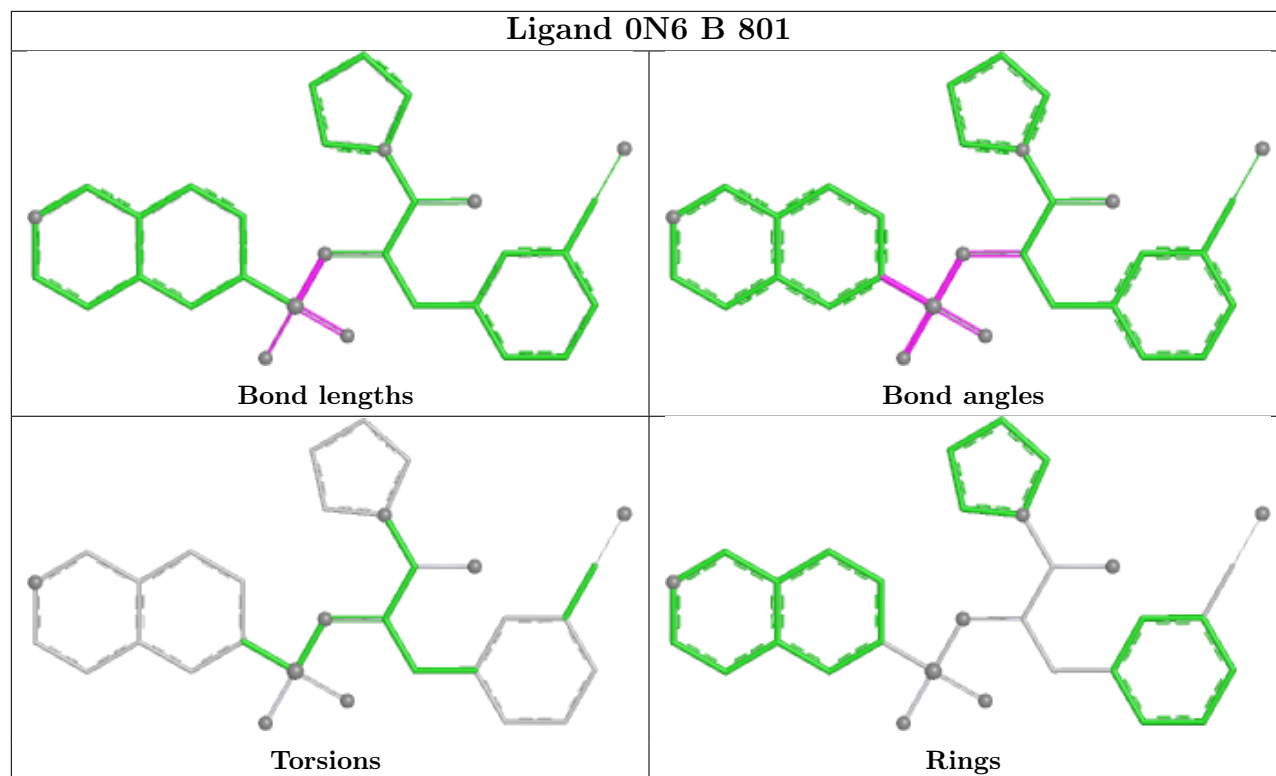
4 monomers are involved in 5 short contacts:

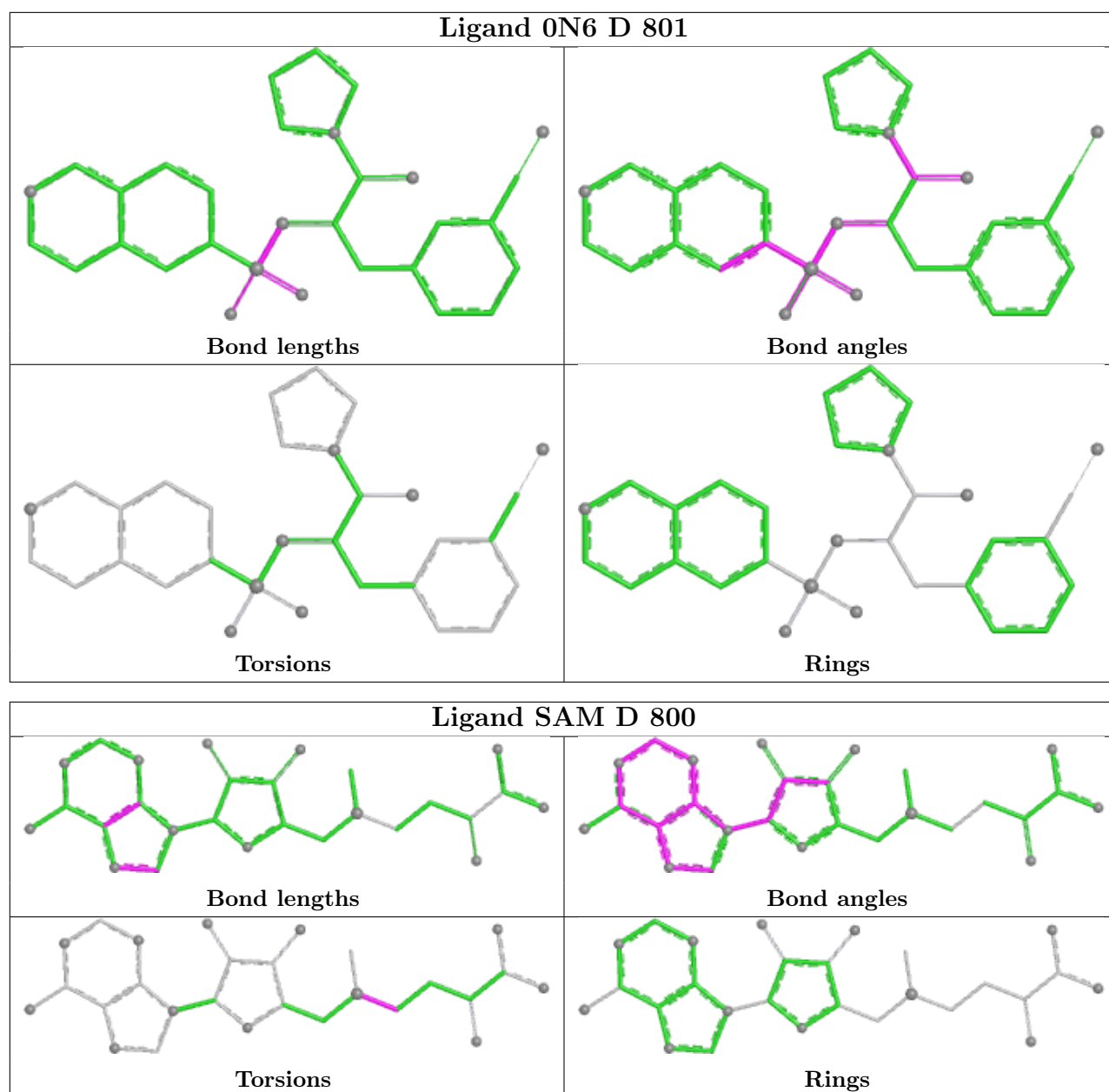
Mol	Chain	Res	Type	Clashes	Symm-Clashes
2	A	401	SAM	1	0
3	B	801	0N6	1	0
2	D	800	SAM	1	0
3	C	801	0N6	2	0

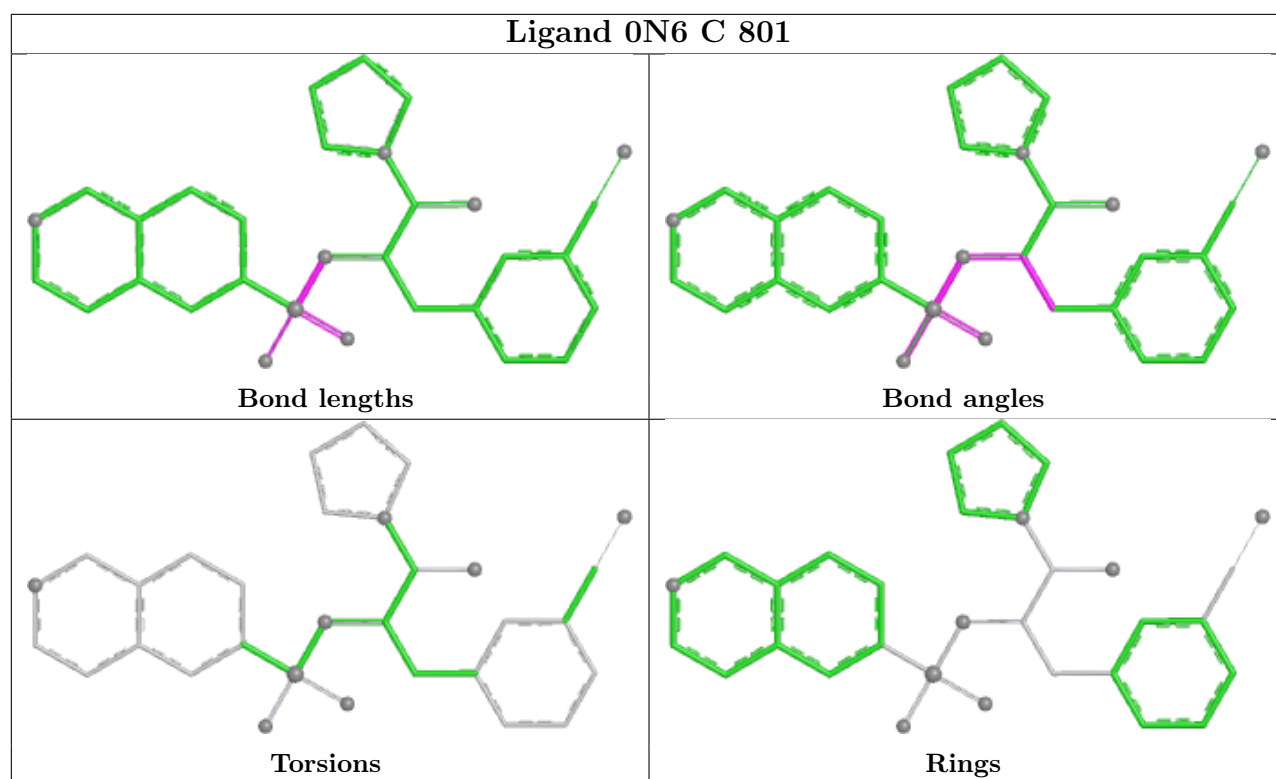
The following is a two-dimensional graphical depiction of Mogul quality analysis of bond lengths, bond angles, torsion angles, and ring geometry for all instances of the Ligand of Interest. In addition, ligands with molecular weight > 250 and outliers as shown on the validation Tables will also be included. For torsion angles, if less than 5% of the Mogul distribution of torsion angles is within 10 degrees of the torsion angle in question, then that torsion angle is considered an outlier. Any bond that is central to one or more torsion angles identified as an outlier by Mogul will be highlighted in the graph. For rings, the root-mean-square deviation (RMSD) between the ring in question and similar rings identified by Mogul is calculated over all ring torsion angles. If the average RMSD is greater than 60 degrees and the minimal RMSD between the ring in question and any Mogul-identified rings is also greater than 60 degrees, then that ring is considered an outlier. The outliers are highlighted in purple. The color gray indicates Mogul did not find sufficient

equivalents in the CSD to analyse the geometry.









5.7 Other polymers [i](#)

There are no such residues in this entry.

5.8 Polymer linkage issues [i](#)

There are no chain breaks in this entry.

6 Fit of model and data [i](#)

6.1 Protein, DNA and RNA chains [i](#)

In the following table, the column labelled ‘#RSRZ > 2’ contains the number (and percentage) of RSRZ outliers, followed by percent RSRZ outliers for the chain as percentile scores relative to all X-ray entries and entries of similar resolution. The OWAB column contains the minimum, median, 95th percentile and maximum values of the occupancy-weighted average B-factor per residue. The column labelled ‘Q < 0.9’ lists the number of (and percentage) of residues with an average occupancy less than 0.9.

Mol	Chain	Analysed	<RSRZ>	#RSRZ>2	OWAB(Å ²)	Q<0.9
1	A	246/264 (93%)	-0.49	5 (2%) 65 64	13, 23, 48, 89	6 (2%)
1	B	245/264 (92%)	-0.51	4 (1%) 70 70	10, 24, 47, 71	7 (2%)
1	C	245/264 (92%)	-0.43	0 100 100	14, 27, 50, 76	6 (2%)
1	D	250/264 (94%)	-0.25	3 (1%) 76 76	13, 31, 56, 93	6 (2%)
All	All	986/1056 (93%)	-0.42	12 (1%) 76 76	10, 26, 50, 93	25 (2%)

All (12) RSRZ outliers are listed below:

Mol	Chain	Res	Type	RSRZ
1	A	347	PRO	4.6
1	A	260	TRP	3.2
1	A	368	HIS	3.2
1	B	116	HIS	3.2
1	A	346	GLY	3.0
1	D	346	GLY	2.8
1	D	116	HIS	2.7
1	D	369	HIS	2.7
1	A	348	GLU	2.6
1	B	369	HIS	2.2
1	B	137	GLY	2.1
1	B	260	TRP	2.1

6.2 Non-standard residues in protein, DNA, RNA chains [i](#)

There are no non-standard protein/DNA/RNA residues in this entry.

6.3 Carbohydrates [i](#)

There are no oligosaccharides in this entry.

6.4 Ligands ⓘ

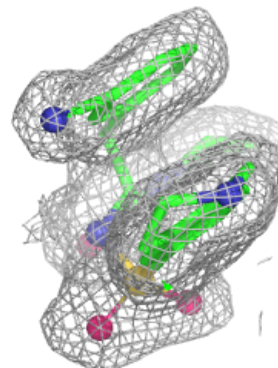
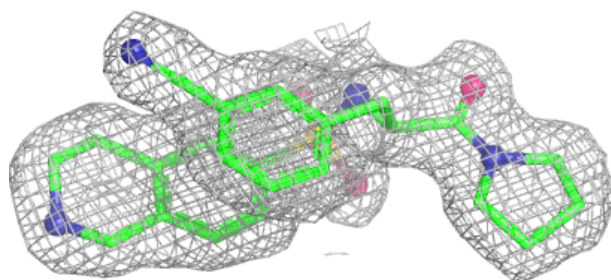
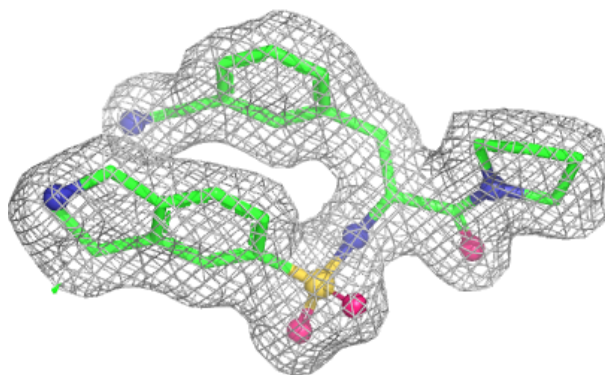
In the following table, the Atoms column lists the number of modelled atoms in the group and the number defined in the chemical component dictionary. The B-factors column lists the minimum, median, 95th percentile and maximum values of B factors of atoms in the group. The column labelled 'Q< 0.9' lists the number of atoms with occupancy less than 0.9.

Mol	Type	Chain	Res	Atoms	RSCC	RSR	B-factors(Å ²)	Q<0.9
5	SO4	A	404	5/5	0.82	0.19	98,102,103,104	0
4	BME	A	403	4/4	0.84	0.17	44,48,51,53	0
3	0N6	B	801	31/31	0.97	0.06	18,23,32,38	0
3	0N6	D	801	31/31	0.97	0.06	18,30,42,51	0
2	SAM	A	401	27/27	0.97	0.05	14,18,21,25	0
2	SAM	D	800	27/27	0.97	0.05	24,27,34,35	0
3	0N6	C	801	31/31	0.98	0.05	16,24,31,38	0
2	SAM	B	800	27/27	0.98	0.05	17,19,22,25	0
3	0N6	A	402	31/31	0.98	0.04	18,23,30,33	0
2	SAM	C	800	27/27	0.98	0.05	19,23,25,29	0

The following is a graphical depiction of the model fit to experimental electron density of all instances of the Ligand of Interest. In addition, ligands with molecular weight > 250 and outliers as shown on the geometry validation Tables will also be included. Each fit is shown from different orientation to approximate a three-dimensional view.

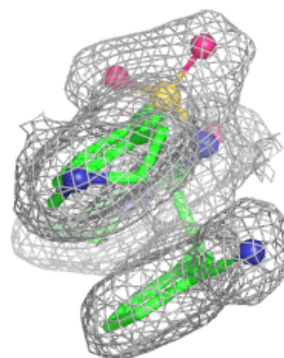
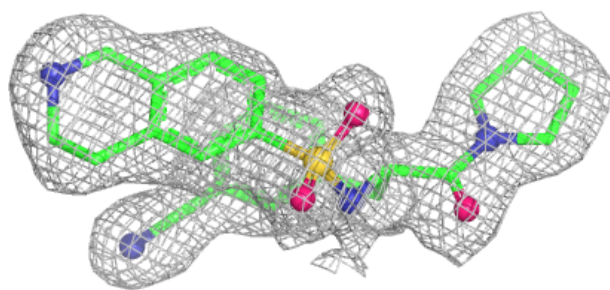
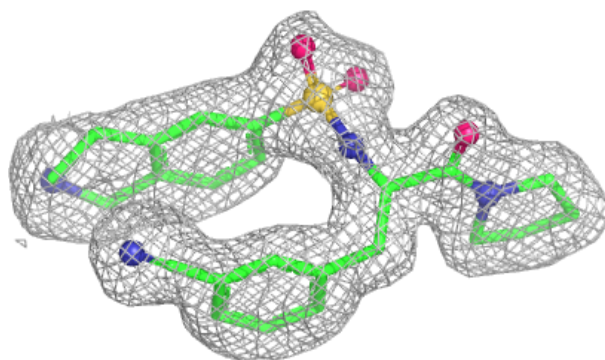
Electron density around 0N6 B 801:

2mF_o-DF_c (at 0.7 rmsd) in gray
mF_o-DF_c (at 3 rmsd) in purple (negative)
and green (positive)

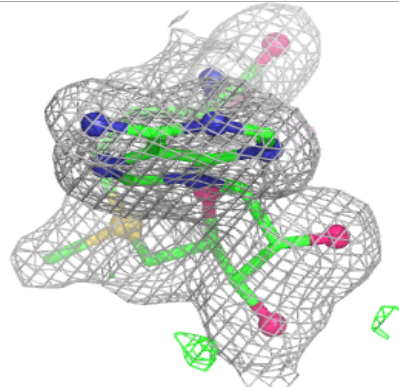
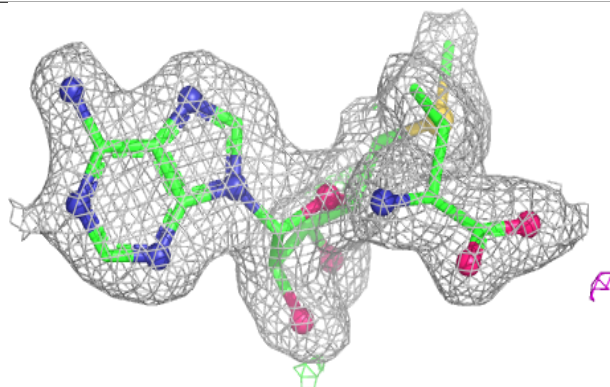
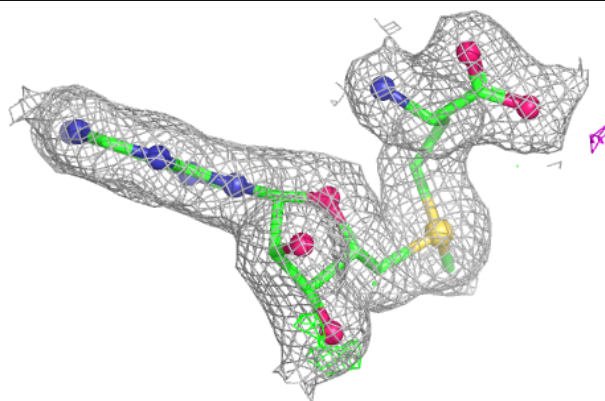


Electron density around 0N6 D 801:

$2mF_o-DF_c$ (at 0.7 rmsd) in gray
 mF_o-DF_c (at 3 rmsd) in purple (negative)
and green (positive)

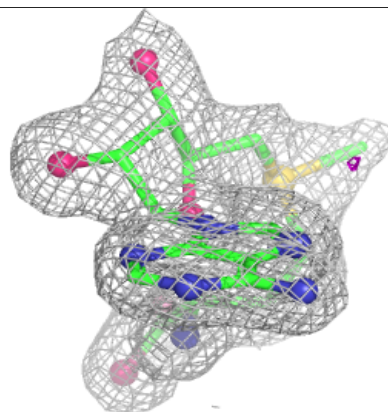
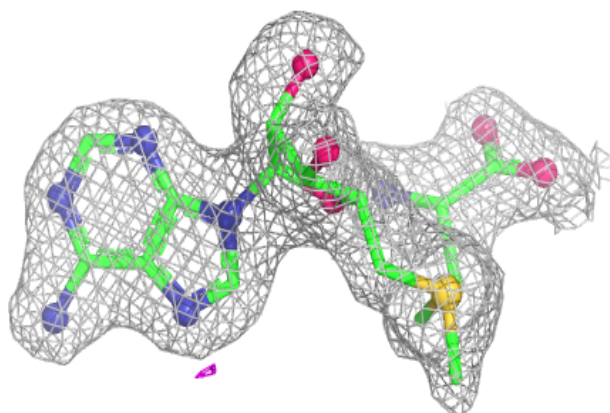
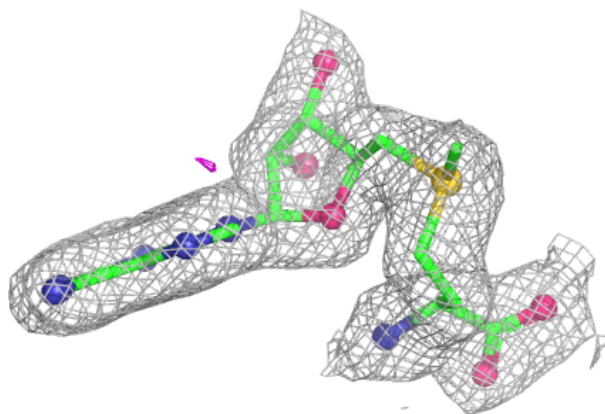
**Electron density around SAM A 401:**

$2mF_o-DF_c$ (at 0.7 rmsd) in gray
 mF_o-DF_c (at 3 rmsd) in purple (negative)
and green (positive)

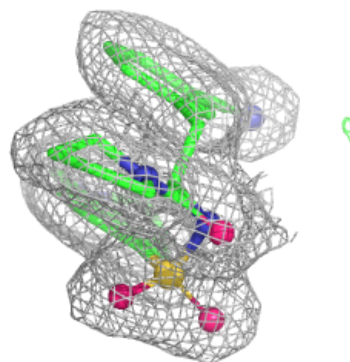
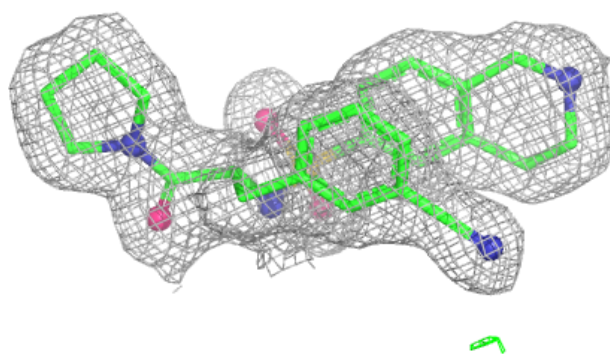
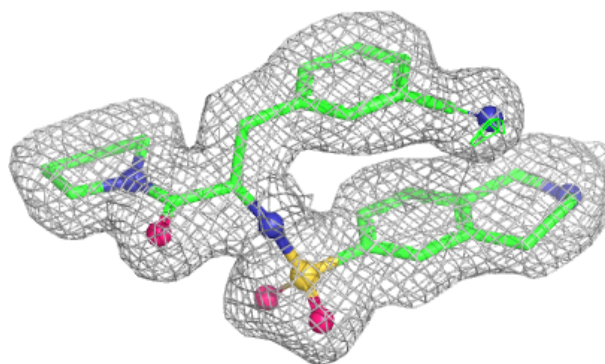


Electron density around SAM D 800:

$2mF_o-DF_c$ (at 0.7 rmsd) in gray
 mF_o-DF_c (at 3 rmsd) in purple (negative)
and green (positive)

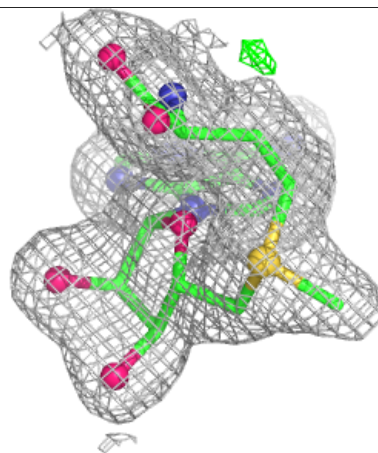
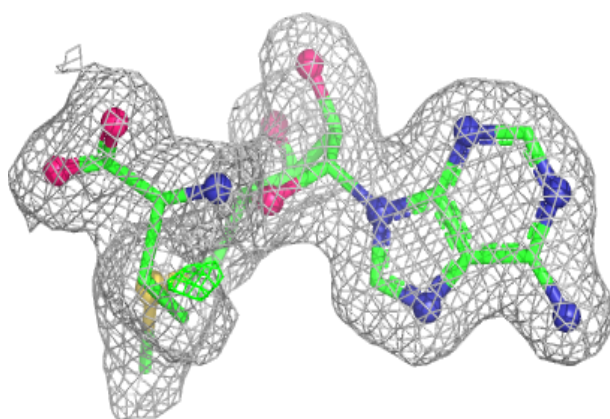
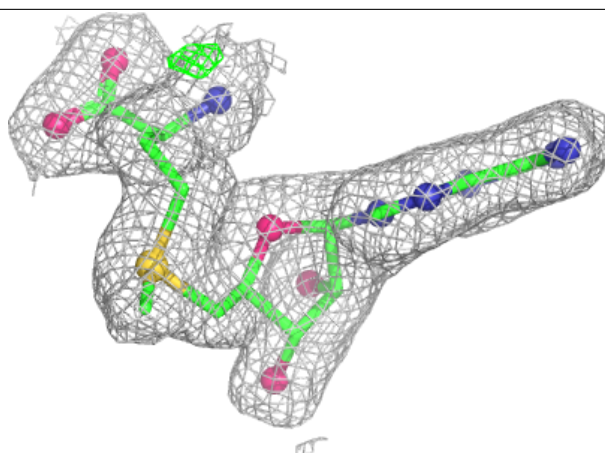
**Electron density around 0N6 C 801:**

$2mF_o-DF_c$ (at 0.7 rmsd) in gray
 mF_o-DF_c (at 3 rmsd) in purple (negative)
and green (positive)

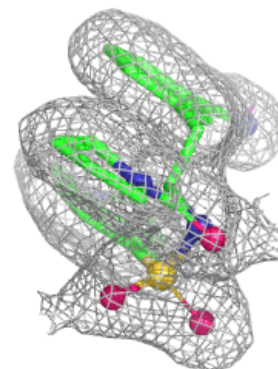
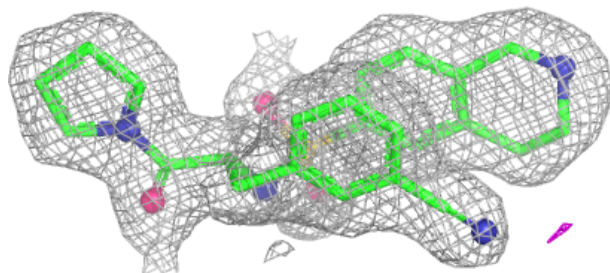
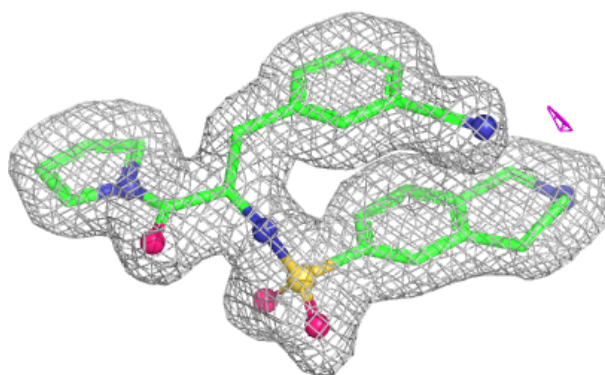


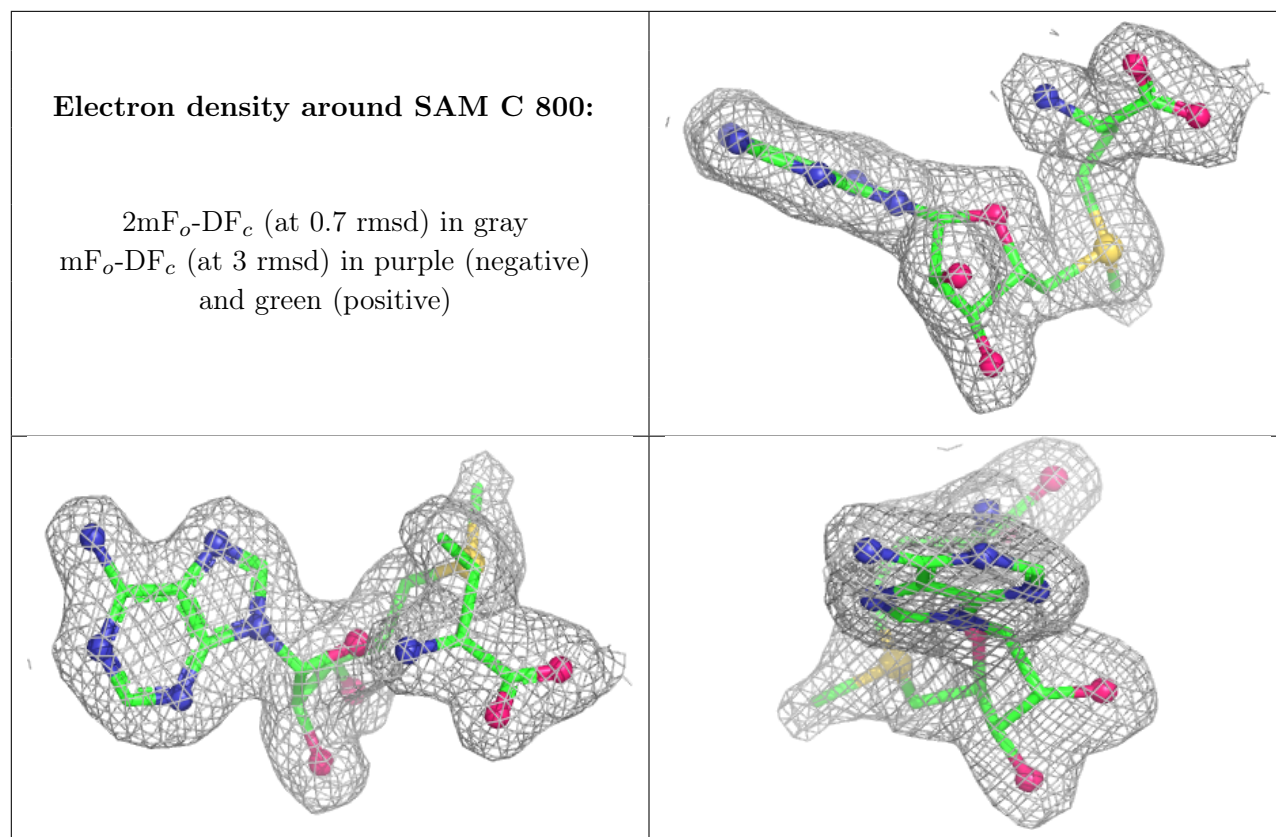
Electron density around SAM B 800:

$2mF_o-DF_c$ (at 0.7 rmsd) in gray
 mF_o-DF_c (at 3 rmsd) in purple (negative)
and green (positive)

**Electron density around 0N6 A 402:**

$2mF_o-DF_c$ (at 0.7 rmsd) in gray
 mF_o-DF_c (at 3 rmsd) in purple (negative)
and green (positive)





6.5 Other polymers [i](#)

There are no such residues in this entry.