



# Full wwPDB X-ray Structure Validation Report ⓘ

Apr 25, 2026 – 03:26 PM EDT

PDB ID : 4E26 / pdb\_00004e26  
Title : BRAF in complex with an organic inhibitor 7898734  
Authors : Qin, J.; Xie, P.; Ventocilla, C.; Zhou, G.; Vultur, A.; Chen, Q.; Herlyn, M.;  
Winkler, J.; Marmorstein, R.  
Deposited on : 2012-03-07  
Resolution : 2.55 Å(reported)

This is a Full wwPDB X-ray Structure Validation Report for a publicly released PDB entry.

We welcome your comments at [validation@mail.wwpdb.org](mailto:validation@mail.wwpdb.org)

A user guide is available at

<https://www.wwpdb.org/validation/2017/XrayValidationReportHelp>

with specific help available everywhere you see the ⓘ symbol.

The types of validation reports are described at

<http://www.wwpdb.org/validation/2017/FAQs#types>.

---

The following versions of software and data (see [references ⓘ](#)) were used in the production of this report:

MolProbity	:	4-5-2 with Phenix2.0
Mogul	:	2022.3.0, CSD as543be (2022)
Xtriage (Phenix)	:	2.0
EDS	:	3.0
Buster-report	:	wwPDB partial adaption of 1.1.7 (2018)
Percentile statistics	:	20250101.v01 (using entries in the PDB archive January 1st 2025)
CCP4	:	9.0.010 (Gargrove)
Density-Fitness	:	1.0.12
Ideal geometry (proteins)	:	Engh & Huber (2001)
Ideal geometry (DNA, RNA)	:	Parkinson et al. (1996)
Validation Pipeline (wwPDB-VP)	:	2.49

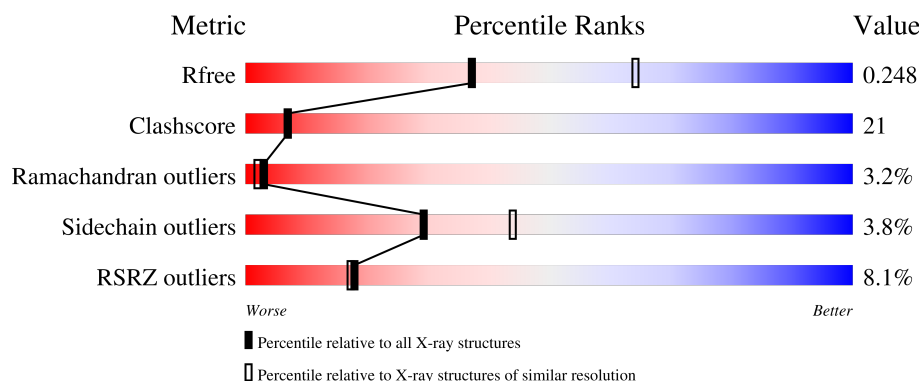
# 1 Overall quality at a glance

The following experimental techniques were used to determine the structure:

## *X-RAY DIFFRACTION*

The reported resolution of this entry is 2.55 Å.

Percentile scores (ranging between 0-100) for global validation metrics of the entry are shown in the following graphic. The table shows the number of entries on which the scores are based.



Metric	Whole archive (#Entries)	Similar resolution (#Entries, resolution range(Å))
$R_{free}$	180053	1091 (2.54-2.54)
Clashscore	190562	1120 (2.54-2.54)
Ramachandran outliers	187476	1106 (2.54-2.54)
Sidechain outliers	187428	1106 (2.54-2.54)
RSRZ outliers	180081	1091 (2.54-2.54)

The table below summarises the geometric issues observed across the polymeric chains and their fit to the electron density. The red, orange, yellow and green segments of the lower bar indicate the fraction of residues that contain outliers for  $\geq 3$ , 2, 1 and 0 types of geometric quality criteria respectively. A grey segment represents the fraction of residues that are not modelled. The numeric value for each fraction is indicated below the corresponding segment, with a dot representing fractions  $\leq 5\%$ . The upper red bar (where present) indicates the fraction of residues that have poor fit to the electron density. The numeric value is given above the bar.

Mol	Chain	Length	Quality of chain
1	A	307	 7% 62% 22% 12%
1	B	307	 7% 53% 29% 14%

The following table lists non-polymeric compounds, carbohydrate monomers and non-standard residues in protein, DNA, RNA chains that are outliers for geometric or electron-density-fit criteria:

Mol	Type	Chain	Res	Chirality	Geometry	Clashes	Electron density
2	734	A	801	-	-	X	-
2	734	B	801	-	-	X	-

## 2 Entry composition

There are 3 unique types of molecules in this entry. The entry contains 4393 atoms, of which 0 are hydrogens and 0 are deuteriums.

In the tables below, the ZeroOcc column contains the number of atoms modelled with zero occupancy, the AltConf column contains the number of residues with at least one atom in alternate conformation and the Trace column contains the number of residues modelled with at most 2 atoms.

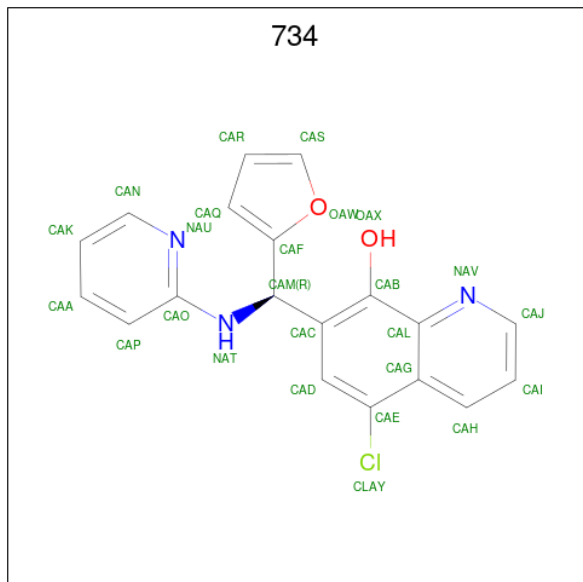
- Molecule 1 is a protein called Serine/threonine-protein kinase B-raf.

Mol	Chain	Residues	Atoms					ZeroOcc	AltConf	Trace
1	A	270	Total	C	N	O	S	0	0	0
			2162	1386	377	386	13			
1	B	264	Total	C	N	O	S	0	0	0
			2105	1349	366	377	13			

There are 24 discrepancies between the modelled and reference sequences:

Chain	Residue	Modelled	Actual	Comment	Reference
A	420	MET	-	expression tag	UNP P15056
A	421	ASP	-	expression tag	UNP P15056
A	422	ARG	-	expression tag	UNP P15056
A	423	GLY	-	expression tag	UNP P15056
A	424	SER	-	expression tag	UNP P15056
A	425	HIS	-	expression tag	UNP P15056
A	426	HIS	-	expression tag	UNP P15056
A	427	HIS	-	expression tag	UNP P15056
A	428	HIS	-	expression tag	UNP P15056
A	429	HIS	-	expression tag	UNP P15056
A	430	HIS	-	expression tag	UNP P15056
A	431	GLY	-	expression tag	UNP P15056
B	420	MET	-	expression tag	UNP P15056
B	421	ASP	-	expression tag	UNP P15056
B	422	ARG	-	expression tag	UNP P15056
B	423	GLY	-	expression tag	UNP P15056
B	424	SER	-	expression tag	UNP P15056
B	425	HIS	-	expression tag	UNP P15056
B	426	HIS	-	expression tag	UNP P15056
B	427	HIS	-	expression tag	UNP P15056
B	428	HIS	-	expression tag	UNP P15056
B	429	HIS	-	expression tag	UNP P15056
B	430	HIS	-	expression tag	UNP P15056
B	431	GLY	-	expression tag	UNP P15056

- Molecule 2 is 5-chloro-7-[(R)-furan-2-yl(pyridin-2-ylamino)methyl]quinolin-8-ol (CCD ID: 734) (formula: C<sub>19</sub>H<sub>14</sub>ClN<sub>3</sub>O<sub>2</sub>).



Mol	Chain	Residues	Atoms					ZeroOcc	AltConf
2	A	1	Total	C	Cl	N	O	0	0
			25	19	1	3	2		
2	B	1	Total	C	Cl	N	O	0	0
			25	19	1	3	2		

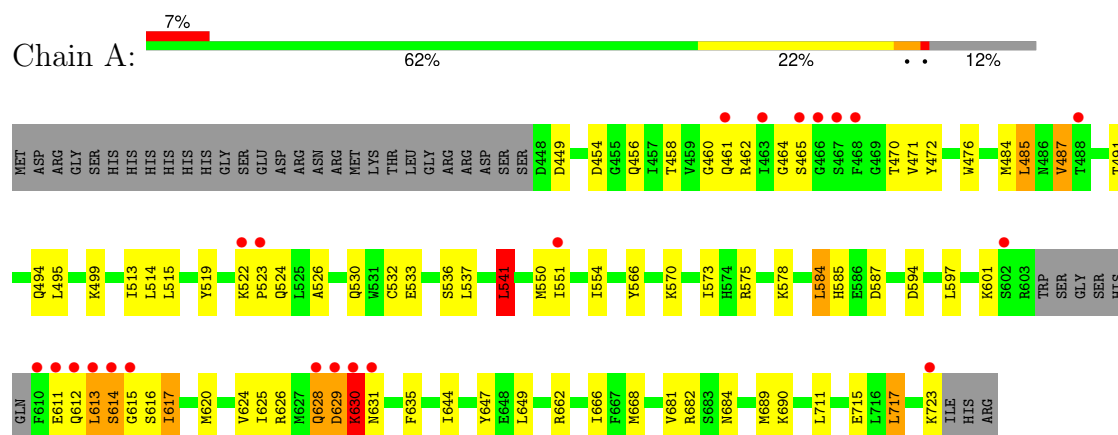
- Molecule 3 is water.

Mol	Chain	Residues	Atoms		ZeroOcc	AltConf
3	A	41	Total	O	0	0
			41	41		
3	B	35	Total	O	0	0
			35	35		

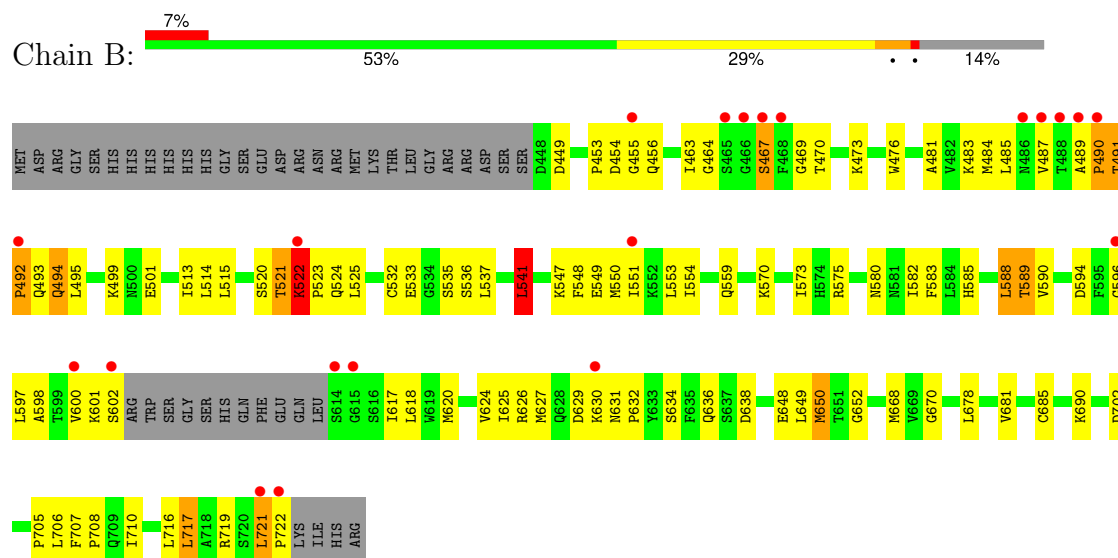
### 3 Residue-property plots

These plots are drawn for all protein, RNA, DNA and oligosaccharide chains in the entry. The first graphic for a chain summarises the proportions of the various outlier classes displayed in the second graphic. The second graphic shows the sequence view annotated by issues in geometry and electron density. Residues are color-coded according to the number of geometric quality criteria for which they contain at least one outlier: green = 0, yellow = 1, orange = 2 and red = 3 or more. A red dot above a residue indicates a poor fit to the electron density ( $RSRZ > 2$ ). Stretches of 2 or more consecutive residues without any outlier are shown as a green connector. Residues present in the sample, but not in the model, are shown in grey.

- Molecule 1: Serine/threonine-protein kinase B-raf



- Molecule 1: Serine/threonine-protein kinase B-raf



## 4 Data and refinement statistics

Property	Value	Source
Space group	P 41 21 2	Depositor
Cell constants a, b, c, $\alpha$ , $\beta$ , $\gamma$	94.28Å 94.28Å 163.47Å 90.00° 90.00° 90.00°	Depositor
Resolution (Å)	50.00 – 2.55 50.00 – 2.55	Depositor EDS
% Data completeness (in resolution range)	(Not available) (50.00-2.55) 94.0 (50.00-2.55)	Depositor EDS
$R_{merge}$	(Not available)	Depositor
$R_{sym}$	(Not available)	Depositor
$\langle I/\sigma(I) \rangle$ <sup>1</sup>	2.64 (at 2.54Å)	Xtriage
Refinement program	CNS	Depositor
R, $R_{free}$	0.220 , 0.262 0.201 , 0.248	Depositor DCC
$R_{free}$ test set	2438 reflections (9.88%)	wwPDB-VP
Wilson B-factor (Å <sup>2</sup> )	43.2	Xtriage
Anisotropy	0.053	Xtriage
Bulk solvent $k_{sol}$ (e/Å <sup>3</sup> ), $B_{sol}$ (Å <sup>2</sup> )	0.34 , 34.5	EDS
L-test for twinning <sup>2</sup>	$\langle  L  \rangle = 0.48$ , $\langle L^2 \rangle = 0.32$	Xtriage
Estimated twinning fraction	No twinning to report.	Xtriage
$F_o, F_c$ correlation	0.94	EDS
Total number of atoms	4393	wwPDB-VP
Average B, all atoms (Å <sup>2</sup> )	45.0	wwPDB-VP

Xtriage's analysis on translational NCS is as follows: *The largest off-origin peak in the Patterson function is 12.69% of the height of the origin peak. No significant pseudotranslation is detected.*

<sup>1</sup>Intensities estimated from amplitudes.

<sup>2</sup>Theoretical values of  $\langle |L| \rangle$ ,  $\langle L^2 \rangle$  for acentric reflections are 0.5, 0.333 respectively for untwinned datasets, and 0.375, 0.2 for perfectly twinned datasets.

## 5 Model quality

### 5.1 Standard geometry

Bond lengths and bond angles in the following residue types are not validated in this section:  
734

The Z score for a bond length (or angle) is the number of standard deviations the observed value is removed from the expected value. A bond length (or angle) with  $|Z| > 5$  is considered an outlier worth inspection. RMSZ is the root-mean-square of all Z scores of the bond lengths (or angles).

Mol	Chain	Bond lengths		Bond angles	
		RMSZ	$\# Z  > 5$	RMSZ	$\# Z  > 5$
1	A	0.44	0/2208	0.93	6/2978 (0.2%)
1	B	0.46	0/2150	0.99	10/2902 (0.3%)
All	All	0.45	0/4358	0.96	16/5880 (0.3%)

There are no bond length outliers.

All (16) bond angle outliers are listed below:

Mol	Chain	Res	Type	Atoms	Z	Observed(°)	Ideal(°)
1	B	597	LEU	N-CA-C	-7.16	104.28	112.87
1	B	515	LEU	N-CA-C	6.85	119.29	108.67
1	B	522	LYS	CA-C-N	-6.62	111.57	119.84
1	B	522	LYS	C-N-CA	-6.62	111.57	119.84
1	B	521	THR	N-CA-C	-6.57	104.98	114.12
1	A	515	LEU	N-CA-C	6.26	118.17	109.15
1	A	541	LEU	N-CA-C	6.10	117.73	111.14
1	B	494	GLN	N-CA-C	-6.05	104.98	112.90
1	A	612	GLN	N-CA-C	5.78	118.33	110.35
1	B	638	ASP	N-CA-C	-5.70	105.14	111.36
1	B	473	LYS	N-CA-C	-5.55	100.24	109.46
1	B	541	LEU	N-CA-C	5.50	117.36	111.36
1	A	630	LYS	N-CA-C	-5.49	100.35	109.46
1	A	454	ASP	N-CA-C	5.44	117.91	110.24
1	A	668	MET	N-CA-C	5.26	116.69	111.07
1	B	668	MET	N-CA-C	5.07	117.70	111.82

There are no chirality outliers.

There are no planarity outliers.



## 5.2 Too-close contacts ⓘ

In the following table, the Non-H and H(model) columns list the number of non-hydrogen atoms and hydrogen atoms in the chain respectively. The H(added) column lists the number of hydrogen atoms added and optimized by MolProbity. The Clashes column lists the number of clashes within the asymmetric unit, whereas Symm-Clashes lists symmetry-related clashes.

Mol	Chain	Non-H	H(model)	H(added)	Clashes	Symm-Clashes
1	A	2162	0	2205	67	0
1	B	2105	0	2145	116	0
2	A	25	0	11	9	0
2	B	25	0	11	26	0
3	A	41	0	0	0	0
3	B	35	0	0	0	0
All	All	4393	0	4372	183	0

The all-atom clashscore is defined as the number of clashes found per 1000 atoms (including hydrogen atoms). The all-atom clashscore for this structure is 21.

All (183) close contacts within the same asymmetric unit are listed below, sorted by their clash magnitude.

Atom-1	Atom-2	Interatomic distance (Å)	Clash overlap (Å)
1:B:536:SER:H	2:B:801:734:CAA	1.20	1.48
1:B:536:SER:HB3	2:B:801:734:CAP	1.54	1.35
1:B:536:SER:N	2:B:801:734:CAA	1.97	1.27
1:A:532:CYS:H	2:A:801:734:HAJ	1.05	1.19
1:B:536:SER:N	2:B:801:734:HAA	1.57	1.13
1:B:536:SER:H	2:B:801:734:HAA	1.01	1.11
1:B:536:SER:CB	2:B:801:734:HAA	1.83	1.08
1:B:536:SER:CB	2:B:801:734:HAP	1.87	1.04
1:B:536:SER:CB	2:B:801:734:CAA	2.35	1.04
1:B:536:SER:CB	2:B:801:734:CAP	2.37	1.02
1:B:536:SER:CA	2:B:801:734:HAA	1.95	0.97
1:B:455:GLY:H	1:B:522:LYS:HD2	1.27	0.95
1:A:532:CYS:N	2:A:801:734:HAJ	1.83	0.94
1:A:485:LEU:HD12	1:A:487:VAL:HG22	1.50	0.93
1:B:536:SER:H	2:B:801:734:CAK	1.82	0.92
1:B:536:SER:HB3	2:B:801:734:HAP	0.93	0.91
1:A:626:ARG:HB3	1:A:628:GLN:HG3	1.52	0.90
1:A:532:CYS:H	2:A:801:734:CAJ	1.84	0.90
1:B:456:GLN:HE21	1:B:476:TRP:HE1	1.21	0.89
1:B:522:LYS:HB3	1:B:523:PRO:CD	2.03	0.88
1:B:455:GLY:N	1:B:522:LYS:HD2	1.88	0.88

*Continued on next page...*

*Continued from previous page...*

Atom-1	Atom-2	Interatomic distance (Å)	Clash overlap (Å)
1:A:551:ILE:H	1:A:551:ILE:HD12	1.38	0.87
1:B:455:GLY:H	1:B:522:LYS:CD	1.88	0.85
1:B:536:SER:OG	2:B:801:734:HAA	1.76	0.85
1:B:487:VAL:HG22	1:B:489:ALA:H	1.41	0.85
1:B:536:SER:HB3	2:B:801:734:CAA	2.01	0.84
1:B:681:VAL:HG21	1:B:690:LYS:HD2	1.62	0.81
1:B:620:MET:HE3	1:B:624:VAL:HG12	1.62	0.80
1:A:681:VAL:HG21	1:A:690:LYS:HD2	1.60	0.80
1:B:650:MET:HE3	1:B:650:MET:HA	1.64	0.77
1:A:456:GLN:HE21	1:A:476:TRP:HE1	1.32	0.76
1:A:522:LYS:HB2	1:A:523:PRO:HD3	1.69	0.75
1:A:723:LYS:HD3	1:A:723:LYS:H	1.53	0.74
1:B:455:GLY:H	1:B:522:LYS:CG	2.00	0.74
1:B:627:MET:HE3	1:B:630:LYS:HD3	1.68	0.74
1:A:584:LEU:HD22	1:A:587:ASP:HA	1.70	0.73
1:B:532:CYS:H	2:B:801:734:HAJ	1.53	0.73
1:B:536:SER:CA	2:B:801:734:CAA	2.63	0.72
1:A:689:MET:HE2	1:A:717:LEU:HD21	1.71	0.71
1:B:454:ASP:HA	1:B:522:LYS:HG3	1.73	0.71
1:B:481:ALA:HB2	2:B:801:734:CAI	2.21	0.70
1:A:613:LEU:HD13	1:A:614:SER:N	2.06	0.70
1:A:626:ARG:HH21	1:A:628:GLN:NE2	1.89	0.70
1:B:491:THR:HB	1:B:492:PRO:HD2	1.74	0.69
1:B:537:LEU:HD21	1:B:649:LEU:HD21	1.74	0.68
1:B:456:GLN:NE2	1:B:476:TRP:HE1	1.92	0.68
1:A:550:MET:O	1:A:554:ILE:HG12	1.94	0.68
1:A:620:MET:HE3	1:A:624:VAL:HG12	1.76	0.68
1:A:456:GLN:NE2	1:A:476:TRP:HE1	1.93	0.67
1:A:485:LEU:HD12	1:A:487:VAL:CG2	2.23	0.67
1:B:481:ALA:HB2	2:B:801:734:HAI	1.75	0.66
1:B:550:MET:HE1	1:B:650:MET:HE2	1.78	0.66
1:B:554:ILE:HD12	1:B:717:LEU:HD11	1.76	0.66
1:B:536:SER:OG	2:B:801:734:CAA	2.40	0.66
1:B:522:LYS:CB	1:B:523:PRO:CD	2.74	0.65
1:B:492:PRO:HG2	1:B:493:GLN:H	1.61	0.65
1:B:601:LYS:HD2	1:B:602:SER:H	1.60	0.64
1:B:522:LYS:HG2	1:B:523:PRO:HD3	1.79	0.64
1:B:535:SER:HB3	2:B:801:734:HAK	1.80	0.63
1:B:467:SER:HB2	1:B:483:LYS:NZ	2.13	0.63
1:B:620:MET:HE2	1:B:625:ILE:HG13	1.81	0.62
1:A:620:MET:HE2	1:A:625:ILE:HG12	1.81	0.61

*Continued on next page...*

*Continued from previous page...*

Atom-1	Atom-2	Interatomic distance (Å)	Clash overlap (Å)
1:B:463:ILE:HG22	2:B:801:734:CAQ	2.29	0.61
1:B:485:LEU:HD12	1:B:525:LEU:HD12	1.81	0.61
1:B:522:LYS:CG	1:B:523:PRO:HD3	2.29	0.61
1:B:705:PRO:HG2	1:B:710:ILE:HD11	1.82	0.61
1:A:551:ILE:HD12	1:A:551:ILE:N	2.15	0.61
1:B:533:GLU:H	1:B:585:HIS:HD2	1.48	0.61
1:A:630:LYS:HB2	1:A:630:LYS:NZ	2.17	0.60
1:B:521:THR:O	1:B:522:LYS:O	2.20	0.60
1:B:721:LEU:HB3	1:B:722:PRO:HD3	1.83	0.60
1:B:522:LYS:CB	1:B:523:PRO:HD3	2.31	0.60
1:B:583:PHE:HE1	2:B:801:734:NAT	2.00	0.59
1:A:723:LYS:HD3	1:A:723:LYS:N	2.17	0.59
1:B:533:GLU:H	1:B:585:HIS:CD2	2.20	0.59
1:B:620:MET:HE3	1:B:624:VAL:CG1	2.32	0.59
1:A:597:LEU:HD11	1:A:613:LEU:HD23	1.85	0.58
1:B:627:MET:CE	1:B:630:LYS:HD3	2.34	0.58
1:A:464:GLY:O	1:A:470:THR:HB	2.03	0.58
1:B:501:GLU:HG3	1:B:596:GLY:N	2.20	0.57
1:B:626:ARG:HD2	1:B:670:GLY:O	2.03	0.57
1:B:532:CYS:H	2:B:801:734:CAJ	2.18	0.57
1:B:501:GLU:HG3	1:B:596:GLY:CA	2.34	0.57
1:B:520:SER:OG	1:B:522:LYS:HB2	2.04	0.57
1:A:484:MET:HE2	1:A:524:GLN:HB2	1.87	0.56
1:B:532:CYS:N	2:B:801:734:HAJ	2.20	0.56
1:B:617:ILE:HD12	1:B:618:LEU:N	2.21	0.56
1:B:469:GLY:HA3	1:B:484:MET:O	2.06	0.56
1:A:630:LYS:O	1:A:631:ASN:HB2	2.05	0.55
1:B:583:PHE:HE1	2:B:801:734:HNAT	1.52	0.55
1:A:462:ARG:NH2	1:A:470:THR:HG21	2.22	0.55
1:B:490:PRO:O	1:B:494:GLN:HB2	2.07	0.55
1:A:536:SER:HB3	2:A:801:734:HAP	1.89	0.55
1:A:717:LEU:C	1:A:717:LEU:HD12	2.32	0.55
1:A:573:ILE:HG22	1:A:575:ARG:HG2	1.90	0.54
1:B:455:GLY:CA	1:B:522:LYS:HD2	2.37	0.54
1:A:536:SER:H	2:A:801:734:HAA	1.72	0.54
1:A:584:LEU:HD22	1:A:587:ASP:CA	2.37	0.54
1:A:530:GLN:O	2:A:801:734:HAI	2.08	0.54
1:A:573:ILE:HD11	1:A:601:LYS:HD3	1.90	0.54
1:B:559:GLN:OE1	1:B:589:THR:HA	2.08	0.53
1:B:522:LYS:HB3	1:B:523:PRO:HD3	1.85	0.53
1:B:585:HIS:O	1:B:588:LEU:O	2.27	0.53

*Continued on next page...*

*Continued from previous page...*

Atom-1	Atom-2	Interatomic distance (Å)	Clash overlap (Å)
1:B:707:PHE:HA	1:B:710:ILE:HG12	1.91	0.53
1:A:578:LYS:NZ	1:A:616:SER:HB3	2.23	0.52
1:A:495:LEU:O	1:A:499:LYS:HG3	2.08	0.52
1:B:550:MET:O	1:B:554:ILE:HG12	2.08	0.52
1:A:578:LYS:HZ2	1:A:616:SER:HB3	1.73	0.52
1:A:533:GLU:H	1:A:585:HIS:CD2	2.28	0.52
1:A:551:ILE:H	1:A:551:ILE:CD1	2.14	0.52
1:A:537:LEU:HG	1:A:541:LEU:HD22	1.93	0.50
1:A:523:PRO:O	1:A:524:GLN:HG3	2.12	0.50
1:B:601:LYS:HG3	1:B:602:SER:N	2.26	0.50
1:B:582:ILE:HG23	1:B:590:VAL:HG13	1.94	0.50
1:B:631:ASN:N	1:B:632:PRO:CD	2.76	0.49
1:B:707:PHE:HA	1:B:710:ILE:CG1	2.42	0.49
1:A:644:ILE:O	1:A:647:TYR:HB3	2.13	0.49
1:B:706:LEU:O	1:B:710:ILE:HG12	2.13	0.49
1:A:662:ARG:O	1:A:666:ILE:HG13	2.13	0.48
1:B:636:GLN:NE2	1:B:706:LEU:HD21	2.29	0.48
1:A:662:ARG:HH11	1:A:662:ARG:HG3	1.79	0.47
1:B:588:LEU:O	1:B:589:THR:CB	2.62	0.47
1:B:705:PRO:HG2	1:B:710:ILE:CD1	2.45	0.47
1:A:533:GLU:H	1:A:585:HIS:HD2	1.63	0.47
1:A:566:TYR:OH	1:A:570:LYS:HE3	2.14	0.47
1:A:682:ARG:HB3	1:A:684:ASN:OD1	2.14	0.47
1:B:548:PHE:HB2	1:B:553:LEU:HD21	1.97	0.47
1:B:596:GLY:C	1:B:598:ALA:N	2.68	0.47
1:B:547:LYS:HA	1:B:547:LYS:HE2	1.97	0.47
1:A:491:THR:OG1	1:A:494:GLN:HG3	2.15	0.46
1:B:537:LEU:HG	1:B:541:LEU:HD22	1.96	0.46
1:B:491:THR:CB	1:B:492:PRO:HD2	2.44	0.46
1:B:716:LEU:HD23	1:B:716:LEU:O	2.14	0.46
1:A:465:SER:HA	1:A:470:THR:HG22	1.96	0.46
1:B:721:LEU:H	1:B:722:PRO:CD	2.28	0.46
1:A:536:SER:H	2:A:801:734:CAA	2.28	0.46
1:B:596:GLY:C	1:B:598:ALA:H	2.23	0.46
1:B:453:PRO:HB2	1:B:456:GLN:OE1	2.16	0.46
1:B:495:LEU:O	1:B:499:LYS:HG3	2.15	0.46
1:A:514:LEU:HD21	2:A:801:734:HAH	1.98	0.46
1:B:549:GLU:O	1:B:553:LEU:HG	2.16	0.46
1:A:717:LEU:HD12	1:A:717:LEU:O	2.16	0.45
1:B:522:LYS:HE2	1:B:523:PRO:HD2	1.98	0.45
1:B:629:ASP:C	1:B:631:ASN:H	2.24	0.45

*Continued on next page...*

*Continued from previous page...*

Atom-1	Atom-2	Interatomic distance (Å)	Clash overlap (Å)
1:A:536:SER:HB3	2:A:801:734:CAP	2.46	0.45
1:B:601:LYS:CG	1:B:602:SER:N	2.79	0.45
1:B:573:ILE:HG22	1:B:575:ARG:HG2	1.99	0.45
1:B:719:ARG:HG3	1:B:719:ARG:HH11	1.80	0.45
1:A:601:LYS:HE2	1:A:635:PHE:CZ	2.51	0.45
1:A:613:LEU:HD13	1:A:613:LEU:C	2.42	0.44
1:A:711:LEU:O	1:A:715:GLU:HG3	2.17	0.44
1:B:648:GLU:O	1:B:652:GLY:N	2.43	0.44
1:A:628:GLN:CD	1:A:629:ASP:H	2.26	0.43
1:A:584:LEU:HD22	1:A:587:ASP:C	2.43	0.43
1:A:537:LEU:HD21	1:A:649:LEU:HD21	2.01	0.43
1:B:550:MET:SD	1:B:650:MET:HE2	2.58	0.43
1:B:521:THR:O	1:B:522:LYS:C	2.60	0.43
1:B:535:SER:CB	2:B:801:734:HAK	2.45	0.43
1:B:716:LEU:HD23	1:B:716:LEU:C	2.44	0.43
1:B:464:GLY:O	1:B:470:THR:HG23	2.19	0.43
1:B:650:MET:HA	1:B:650:MET:CE	2.42	0.43
1:B:678:LEU:O	1:B:681:VAL:HG22	2.18	0.43
1:A:630:LYS:HB2	1:A:630:LYS:HZ3	1.84	0.42
1:B:707:PHE:O	1:B:708:PRO:C	2.60	0.42
1:B:491:THR:HB	1:B:492:PRO:CD	2.46	0.42
1:B:550:MET:CE	1:B:650:MET:HE2	2.46	0.42
1:A:471:VAL:HG12	1:A:472:TYR:N	2.34	0.42
1:A:617:ILE:H	1:A:617:ILE:CD1	2.33	0.42
1:B:513:ILE:O	1:B:514:LEU:C	2.63	0.42
1:B:620:MET:HE2	1:B:625:ILE:CG1	2.48	0.42
1:A:460:GLY:O	1:A:461:GLN:C	2.61	0.42
1:B:650:MET:HG3	1:B:685:CYS:SG	2.59	0.42
1:B:573:ILE:HD13	1:B:634:SER:HA	2.02	0.41
1:A:513:ILE:O	1:A:514:LEU:C	2.64	0.41
1:B:631:ASN:N	1:B:632:PRO:HD3	2.36	0.41
1:B:467:SER:HB2	1:B:483:LYS:CE	2.51	0.40
1:A:662:ARG:HG3	1:A:662:ARG:NH1	2.36	0.40
1:B:601:LYS:HE2	1:B:602:SER:OG	2.22	0.40
1:B:650:MET:CG	1:B:685:CYS:SG	3.09	0.40
1:B:537:LEU:HD21	1:B:649:LEU:CD2	2.49	0.40
1:A:461:GLN:HA	1:A:461:GLN:OE1	2.21	0.40
1:A:519:TYR:HA	1:A:526:ALA:O	2.22	0.40
1:B:620:MET:HE2	1:B:620:MET:HB3	1.91	0.40

There are no symmetry-related clashes.

## 5.3 Torsion angles

### 5.3.1 Protein backbone

In the following table, the Percentiles column shows the percent Ramachandran outliers of the chain as a percentile score with respect to all X-ray entries followed by that with respect to entries of similar resolution.

The Analysed column shows the number of residues for which the backbone conformation was analysed, and the total number of residues.

Mol	Chain	Analysed	Favoured	Allowed	Outliers	Percentiles	
1	A	266/307 (87%)	238 (90%)	20 (8%)	8 (3%)	3	2
1	B	260/307 (85%)	235 (90%)	16 (6%)	9 (4%)	3	1
All	All	526/614 (86%)	473 (90%)	36 (7%)	17 (3%)	3	2

All (17) Ramachandran outliers are listed below:

Mol	Chain	Res	Type
1	A	611	GLU
1	B	491	THR
1	B	522	LYS
1	A	449	ASP
1	A	614	SER
1	A	629	ASP
1	B	492	PRO
1	B	589	THR
1	B	594	ASP
1	A	615	GLY
1	B	467	SER
1	B	702	ASP
1	A	594	ASP
1	B	490	PRO
1	B	721	LEU
1	A	613	LEU
1	A	487	VAL

### 5.3.2 Protein sidechains

In the following table, the Percentiles column shows the percent sidechain outliers of the chain as a percentile score with respect to all X-ray entries followed by that with respect to entries of similar resolution.

The Analysed column shows the number of residues for which the sidechain conformation was

analysed, and the total number of residues.

Mol	Chain	Analysed	Rotameric	Outliers	Percentiles	
1	A	238/271 (88%)	230 (97%)	8 (3%)	32	48
1	B	232/271 (86%)	222 (96%)	10 (4%)	26	39
All	All	470/542 (87%)	452 (96%)	18 (4%)	29	44

All (18) residues with a non-rotameric sidechain are listed below:

Mol	Chain	Res	Type
1	A	458	THR
1	A	485	LEU
1	A	541	LEU
1	A	584	LEU
1	A	617	ILE
1	A	628	GLN
1	A	630	LYS
1	A	717	LEU
1	B	449	ASP
1	B	524	GLN
1	B	541	LEU
1	B	551	ILE
1	B	570	LYS
1	B	580	ASN
1	B	588	LEU
1	B	600	VAL
1	B	650	MET
1	B	717	LEU

Sometimes sidechains can be flipped to improve hydrogen bonding and reduce clashes. All (12) such sidechains are listed below:

Mol	Chain	Res	Type
1	A	456	GLN
1	A	524	GLN
1	A	562	GLN
1	A	585	HIS
1	A	631	ASN
1	B	456	GLN
1	B	496	GLN
1	B	524	GLN
1	B	539	HIS
1	B	562	GLN

*Continued on next page...*

*Continued from previous page...*

Mol	Chain	Res	Type
1	B	580	ASN
1	B	585	HIS

### 5.3.3 RNA ⓘ

There are no RNA molecules in this entry.

## 5.4 Non-standard residues in protein, DNA, RNA chains ⓘ

There are no non-standard protein/DNA/RNA residues in this entry.

## 5.5 Carbohydrates ⓘ

There are no oligosaccharides in this entry.

## 5.6 Ligand geometry ⓘ

2 ligands are modelled in this entry.

In the following table, the Counts columns list the number of bonds (or angles) for which Mogul statistics could be retrieved, the number of bonds (or angles) that are observed in the model and the number of bonds (or angles) that are defined in the Chemical Component Dictionary. The Link column lists molecule types, if any, to which the group is linked. The Z score for a bond length (or angle) is the number of standard deviations the observed value is removed from the expected value. A bond length (or angle) with  $|Z| > 2$  is considered an outlier worth inspection. RMSZ is the root-mean-square of all Z scores of the bond lengths (or angles).

Mol	Type	Chain	Res	Link	Bond lengths			Bond angles		
					Counts	RMSZ	# Z  > 2	Counts	RMSZ	# Z  > 2
2	734	A	801	-	28,28,28	2.85	13 (46%)	34,39,39	3.37	10 (29%)
2	734	B	801	-	28,28,28	2.46	8 (28%)	34,39,39	3.33	10 (29%)

In the following table, the Chirals column lists the number of chiral outliers, the number of chiral centers analysed, the number of these observed in the model and the number defined in the Chemical Component Dictionary. Similar counts are reported in the Torsion and Rings columns. '-' means no outliers of that kind were identified.

Mol	Type	Chain	Res	Link	Chirals	Torsions	Rings
2	734	A	801	-	-	3/12/12/12	0/4/4/4

*Continued on next page...*



*Continued from previous page...*

Mol	Type	Chain	Res	Link	Chirals	Torsions	Rings
2	734	B	801	-	-	5/12/12/12	0/4/4/4

All (21) bond length outliers are listed below:

Mol	Chain	Res	Type	Atoms	Z	Observed(Å)	Ideal(Å)
2	A	801	734	OAW-CAF	8.09	1.51	1.36
2	B	801	734	OAW-CAF	7.73	1.50	1.36
2	B	801	734	CAR-CAQ	-6.31	1.11	1.42
2	A	801	734	CAR-CAQ	-6.23	1.12	1.42
2	A	801	734	CAB-CAC	4.34	1.42	1.38
2	A	801	734	OAW-CAS	4.31	1.51	1.37
2	B	801	734	OAW-CAS	4.30	1.51	1.37
2	B	801	734	CAQ-CAF	-3.89	1.21	1.34
2	A	801	734	CAQ-CAF	-3.75	1.22	1.34
2	A	801	734	CAM-CAF	3.08	1.52	1.50
2	A	801	734	CAD-CAE	2.98	1.42	1.36
2	A	801	734	CAE-CLAY	2.84	1.81	1.74
2	A	801	734	CAD-CAC	2.67	1.43	1.39
2	A	801	734	CAR-CAS	-2.67	1.23	1.32
2	B	801	734	CAC-CAM	-2.66	1.48	1.52
2	B	801	734	CAR-CAS	-2.63	1.23	1.32
2	A	801	734	CAO-NAU	2.55	1.38	1.34
2	A	801	734	CAI-CAH	2.27	1.41	1.36
2	B	801	734	CAE-CLAY	2.24	1.80	1.74
2	B	801	734	CAB-CAL	-2.07	1.39	1.42
2	A	801	734	CAA-CAP	2.01	1.42	1.38

All (20) bond angle outliers are listed below:

Mol	Chain	Res	Type	Atoms	Z	Observed(°)	Ideal(°)
2	A	801	734	CAQ-CAR-CAS	10.30	124.24	106.94
2	B	801	734	CAQ-CAR-CAS	10.25	124.15	106.94
2	B	801	734	OAW-CAS-CAR	-9.30	93.84	110.44
2	A	801	734	OAW-CAS-CAR	-9.27	93.90	110.44
2	A	801	734	CAR-CAQ-CAF	8.03	119.75	106.67
2	B	801	734	CAR-CAQ-CAF	8.00	119.70	106.67
2	A	801	734	OAW-CAF-CAQ	-7.62	96.45	109.98
2	B	801	734	OAW-CAF-CAQ	-7.42	96.79	109.98
2	A	801	734	CAJ-NAV-CAL	3.83	121.83	117.31
2	A	801	734	CAN-NAU-CAO	3.37	122.03	117.21
2	B	801	734	CAJ-NAV-CAL	3.22	121.11	117.31
2	B	801	734	CAN-NAU-CAO	2.76	121.15	117.21

*Continued on next page...*

*Continued from previous page...*

Mol	Chain	Res	Type	Atoms	Z	Observed(°)	Ideal(°)
2	B	801	734	CAH-CAG-CAE	-2.72	120.35	125.07
2	B	801	734	CAD-CAC-CAB	2.60	120.16	117.49
2	A	801	734	NAT-CAO-NAU	2.54	120.97	116.85
2	B	801	734	CAI-CAJ-NAV	-2.29	120.60	123.97
2	A	801	734	CAI-CAJ-NAV	-2.29	120.61	123.97
2	B	801	734	CAE-CAG-CAL	2.25	120.08	117.40
2	A	801	734	CAP-CAO-NAU	-2.08	119.45	122.61
2	A	801	734	CAD-CAE-CAG	-2.05	119.28	121.42

There are no chirality outliers.

All (8) torsion outliers are listed below:

Mol	Chain	Res	Type	Atoms
2	A	801	734	CAF-CAM-NAT-CAO
2	B	801	734	CAQ-CAF-CAM-CAC
2	B	801	734	OAW-CAF-CAM-CAC
2	A	801	734	CAC-CAM-NAT-CAO
2	A	801	734	CAD-CAC-CAM-NAT
2	B	801	734	CAD-CAC-CAM-NAT
2	B	801	734	CAQ-CAF-CAM-NAT
2	B	801	734	OAW-CAF-CAM-NAT

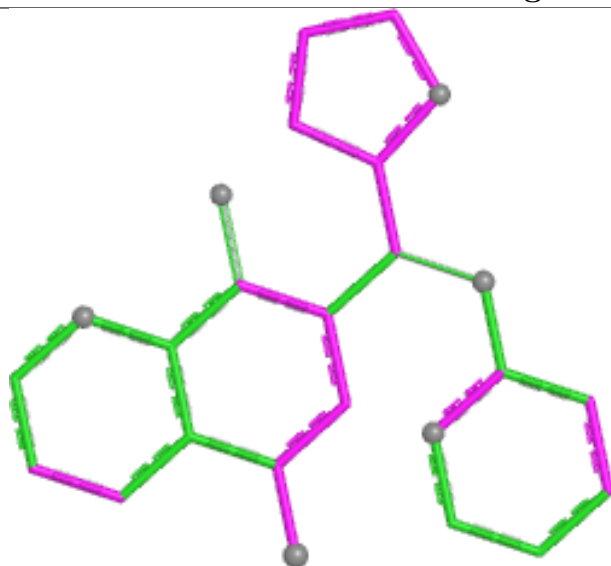
There are no ring outliers.

2 monomers are involved in 35 short contacts:

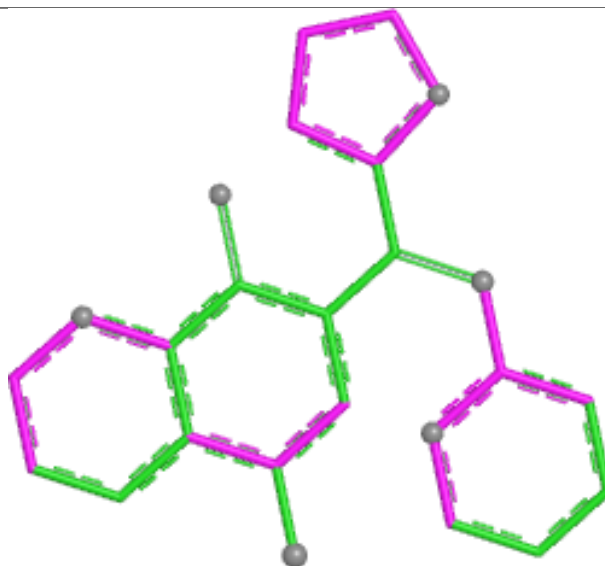
Mol	Chain	Res	Type	Clashes	Symm-Clashes
2	A	801	734	9	0
2	B	801	734	26	0

The following is a two-dimensional graphical depiction of Mogul quality analysis of bond lengths, bond angles, torsion angles, and ring geometry for all instances of the Ligand of Interest. In addition, ligands with molecular weight > 250 and outliers as shown on the validation Tables will also be included. For torsion angles, if less than 5% of the Mogul distribution of torsion angles is within 10 degrees of the torsion angle in question, then that torsion angle is considered an outlier. Any bond that is central to one or more torsion angles identified as an outlier by Mogul will be highlighted in the graph. For rings, the root-mean-square deviation (RMSD) between the ring in question and similar rings identified by Mogul is calculated over all ring torsion angles. If the average RMSD is greater than 60 degrees and the minimal RMSD between the ring in question and any Mogul-identified rings is also greater than 60 degrees, then that ring is considered an outlier. The outliers are highlighted in purple. The color gray indicates Mogul did not find sufficient equivalents in the CSD to analyse the geometry.

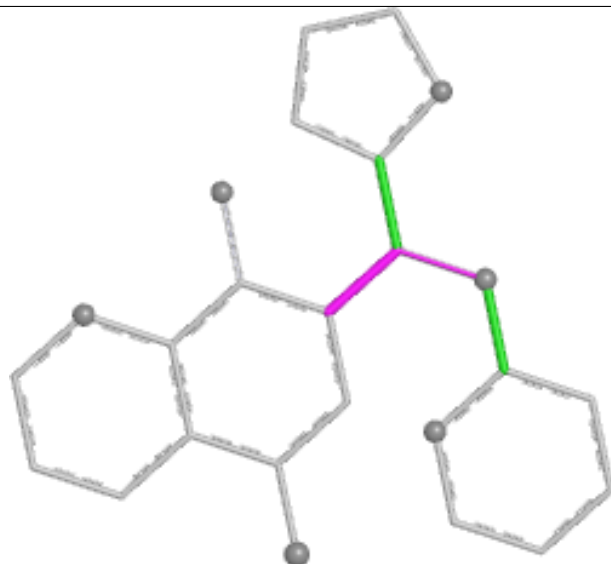
## Ligand 734 A 801



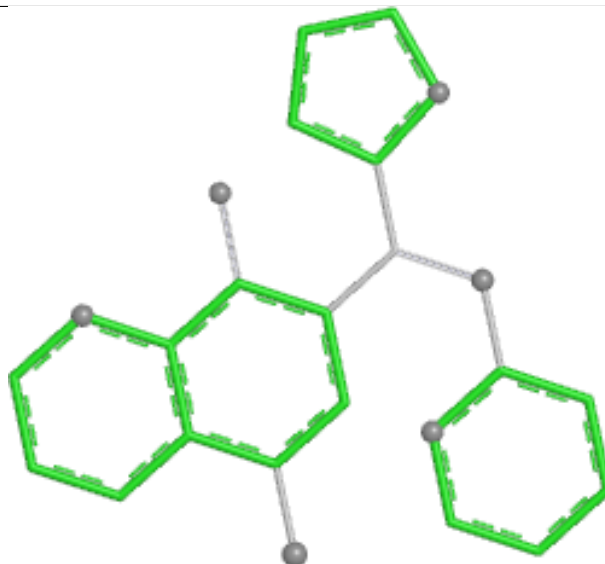
Bond lengths



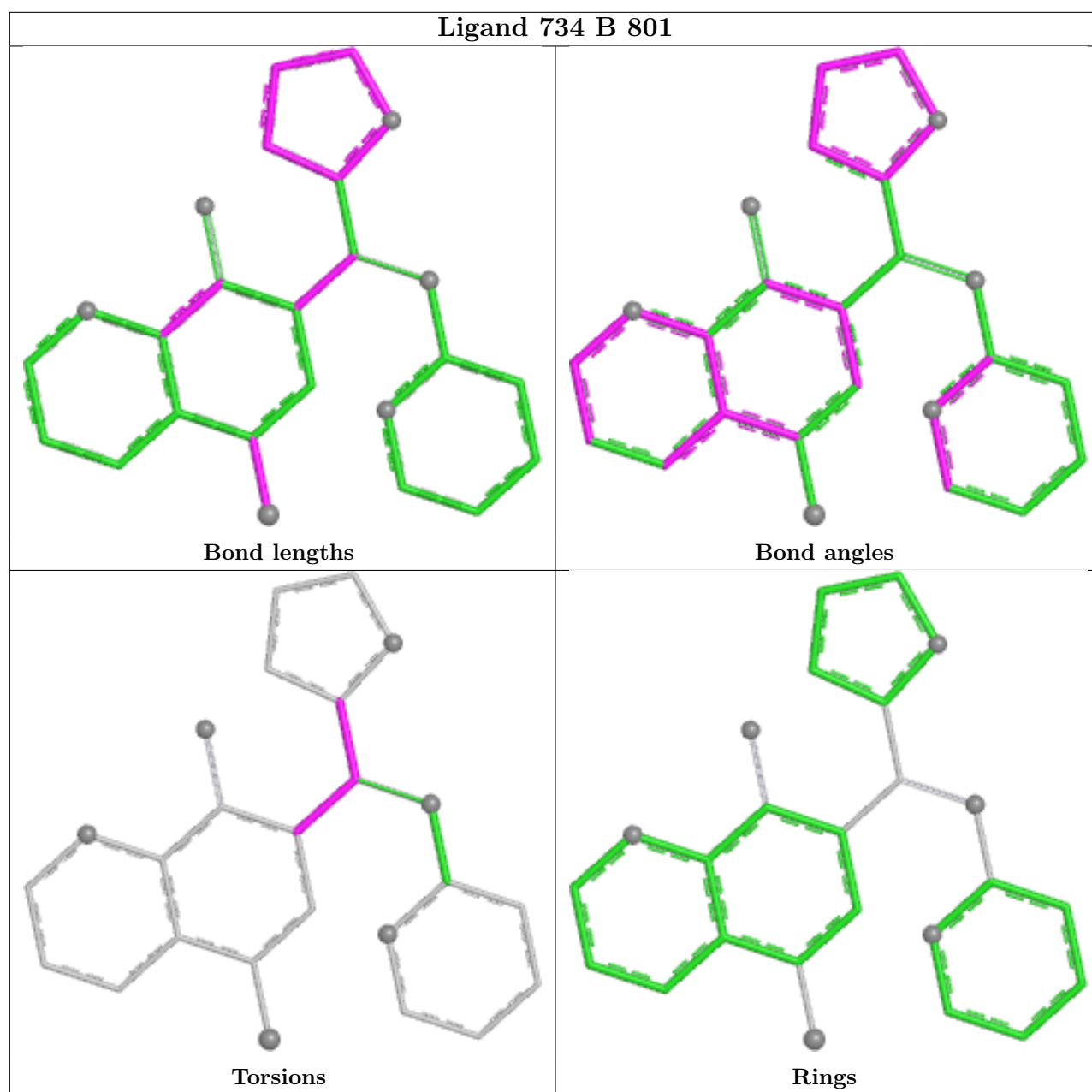
Bond angles



Torsions



Rings



## 5.7 Other polymers [i](#)

There are no such residues in this entry.

## 5.8 Polymer linkage issues [i](#)

There are no chain breaks in this entry.

## 6 Fit of model and data

### 6.1 Protein, DNA and RNA chains

In the following table, the column labelled ‘#RSRZ > 2’ contains the number (and percentage) of RSRZ outliers, followed by percent RSRZ outliers for the chain as percentile scores relative to all X-ray entries and entries of similar resolution. The OWAB column contains the minimum, median, 95<sup>th</sup> percentile and maximum values of the occupancy-weighted average B-factor per residue. The column labelled ‘Q < 0.9’ lists the number of (and percentage) of residues with an average occupancy less than 0.9.

Mol	Chain	Analysed	<RSRZ>	#RSRZ>2	OWAB(Å <sup>2</sup> )	Q<0.9
1	A	270/307 (87%)	0.25	22 (8%) 18 17	21, 40, 84, 115	0
1	B	264/307 (85%)	0.25	21 (7%) 18 18	24, 40, 82, 98	0
All	All	534/614 (86%)	0.25	43 (8%) 18 17	21, 40, 84, 115	0

All (43) RSRZ outliers are listed below:

Mol	Chain	Res	Type	RSRZ
1	B	596	GLY	7.7
1	A	468	PHE	6.2
1	A	610	PHE	4.4
1	A	613	LEU	4.3
1	B	722	PRO	4.3
1	B	466	GLY	4.1
1	B	602	SER	3.7
1	B	614	SER	3.6
1	B	522	LYS	3.5
1	A	628	GLN	3.3
1	A	522	LYS	3.2
1	B	630	LYS	3.1
1	B	467	SER	3.1
1	A	723	LYS	3.0
1	B	488	THR	2.9
1	A	488	THR	2.9
1	A	614	SER	2.8
1	A	615	GLY	2.8
1	A	465	SER	2.8
1	B	487	VAL	2.7
1	A	523	PRO	2.6
1	A	612	GLN	2.6
1	A	467	SER	2.6
1	A	461	GLN	2.5

*Continued on next page...*

*Continued from previous page...*

Mol	Chain	Res	Type	RSRZ
1	B	489	ALA	2.5
1	A	551	ILE	2.5
1	B	486	ASN	2.5
1	B	455	GLY	2.4
1	B	551	ILE	2.4
1	A	463	ILE	2.3
1	B	721	LEU	2.3
1	A	466	GLY	2.3
1	A	602	SER	2.3
1	A	630	LYS	2.2
1	B	465	SER	2.2
1	A	611	GLU	2.2
1	A	629	ASP	2.2
1	A	631	ASN	2.1
1	B	468	PHE	2.1
1	B	490	PRO	2.1
1	B	600	VAL	2.1
1	B	492	PRO	2.1
1	B	615	GLY	2.0

## 6.2 Non-standard residues in protein, DNA, RNA chains [i](#)

There are no non-standard protein/DNA/RNA residues in this entry.

## 6.3 Carbohydrates [i](#)

There are no oligosaccharides in this entry.

## 6.4 Ligands [i](#)

In the following table, the Atoms column lists the number of modelled atoms in the group and the number defined in the chemical component dictionary. The B-factors column lists the minimum, median, 95<sup>th</sup> percentile and maximum values of B factors of atoms in the group. The column labelled 'Q< 0.9' lists the number of atoms with occupancy less than 0.9.

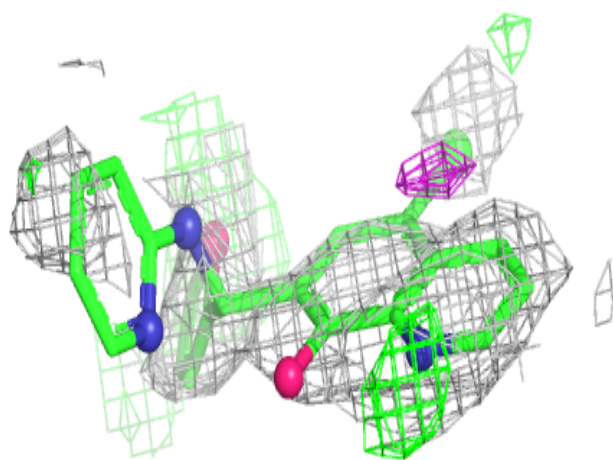
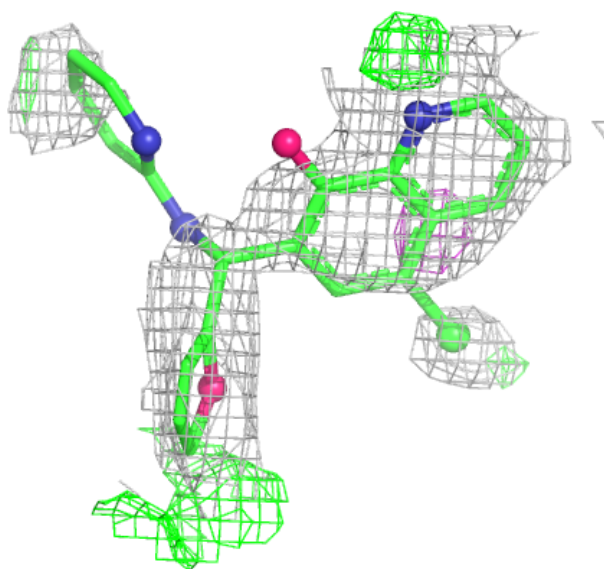
Mol	Type	Chain	Res	Atoms	RSCC	RSR	B-factors( $\text{\AA}^2$ )	Q<0.9
2	734	A	801	25/25	0.63	0.27	103,106,109,109	0
2	734	B	801	25/25	0.64	0.28	118,118,118,118	0

The following is a graphical depiction of the model fit to experimental electron density of all

instances of the Ligand of Interest. In addition, ligands with molecular weight > 250 and outliers as shown on the geometry validation Tables will also be included. Each fit is shown from different orientation to approximate a three-dimensional view.

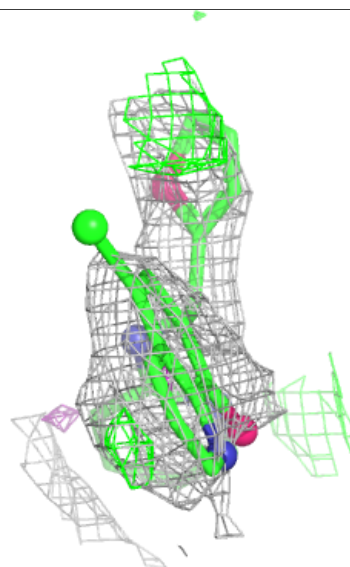
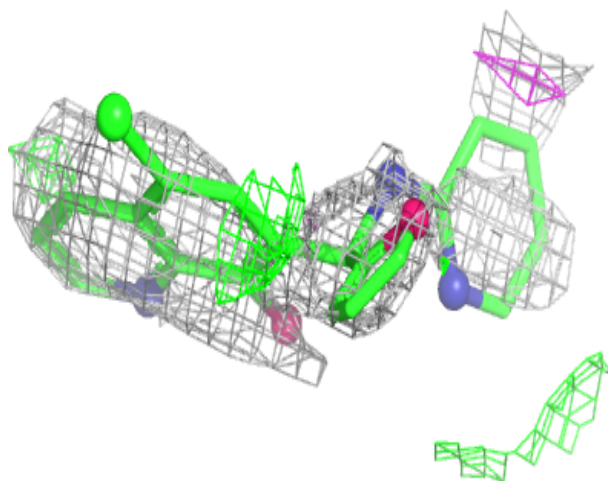
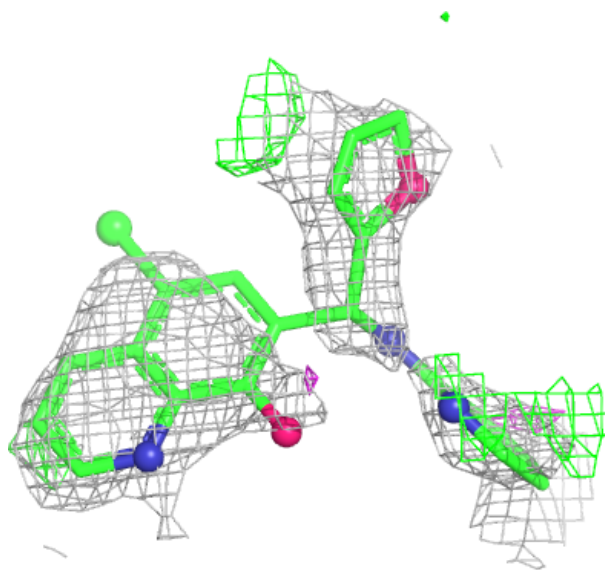
**Electron density around 734 A 801:**

$2mF_o-DF_c$  (at 0.7 rmsd) in gray  
 $mF_o-DF_c$  (at 3 rmsd) in purple (negative)  
and green (positive)



**Electron density around 734 B 801:**

2mF<sub>o</sub>-DF<sub>c</sub> (at 0.7 rmsd) in gray  
mF<sub>o</sub>-DF<sub>c</sub> (at 3 rmsd) in purple (negative)  
and green (positive)



## 6.5 Other polymers ⓘ

There are no such residues in this entry.