



wwPDB X-ray Structure Validation Summary Report ⓘ

Mar 10, 2026 – 12:30 AM UTC

PDB ID : 3DIM / pdb_00003dim
Title : Crystallization of the Thermotoga maritima lysine riboswitch bound to lysine,
Cs+ Soak
Authors : Serganov, A.A.
Deposited on : 2008-06-20
Resolution : 2.90 Å(reported)

This is a wwPDB X-ray Structure Validation Summary Report for a publicly released PDB entry.

We welcome your comments at validation@mail.wwpdb.org

A user guide is available at

<https://www.wwpdb.org/validation/2017/XrayValidationReportHelp>

with specific help available everywhere you see the ⓘ symbol.

The types of validation reports are described at

<http://www.wwpdb.org/validation/2017/FAQs#types>.

The following versions of software and data (see [references ⓘ](#)) were used in the production of this report:

MolProbity	:	4-5-2 with Phenix2.0
Mogul	:	NOT EXECUTED
Xtriage (Phenix)	:	2.0
EDS	:	NOT EXECUTED
Buster-report	:	NOT EXECUTED
Percentile statistics	:	20250101.v01 (using entries in the PDB archive January 1st 2025)
Ideal geometry (proteins)	:	Engh & Huber (2001)
Ideal geometry (DNA, RNA)	:	Parkinson et al. (1996)
Validation Pipeline (wwPDB-VP)	:	2.49

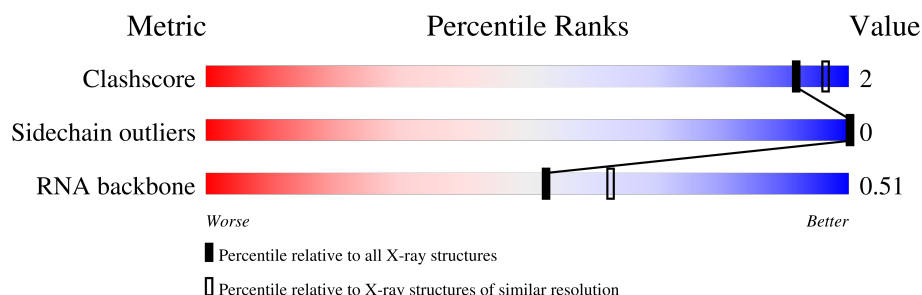
1 Overall quality at a glance

The following experimental techniques were used to determine the structure:

X-RAY DIFFRACTION

The reported resolution of this entry is 2.90 Å.

Percentile scores (ranging between 0-100) for global validation metrics of the entry are shown in the following graphic. The table shows the number of entries on which the scores are based.



Metric	Whole archive (#Entries)	Similar resolution (#Entries, resolution range(Å))
Clashscore	190562	2690 (2.90-2.90)
Sidechain outliers	187428	2625 (2.90-2.90)
RNA backbone	3983	1120 (3.10-2.70)

The table below summarises the geometric issues observed across the polymeric chains and their fit to the electron density. The red, orange, yellow and green segments of the lower bar indicate the fraction of residues that contain outliers for ≥ 3 , 2, 1 and 0 types of geometric quality criteria respectively. A grey segment represents the fraction of residues that are not modelled. The numeric value for each fraction is indicated below the corresponding segment, with a dot representing fractions $\leq 5\%$.

Note EDS was not executed.

Mol	Chain	Length	Quality of chain
1	A	174	

The following table lists non-polymeric compounds, carbohydrate monomers and non-standard residues in protein, DNA, RNA chains that are outliers for geometric or electron-density-fit criteria:

Mol	Type	Chain	Res	Chirality	Geometry	Clashes	Electron density
1	CCC	A	174	X	-	-	-

2 Entry composition [i](#)

There are 7 unique types of molecules in this entry. The entry contains 3812 atoms, of which 0 are hydrogens and 0 are deuteriums.

In the tables below, the ZeroOcc column contains the number of atoms modelled with zero occupancy, the AltConf column contains the number of residues with at least one atom in alternate conformation and the Trace column contains the number of residues modelled with at most 2 atoms.

- Molecule 1 is a RNA chain called RNA (174-MER).

Mol	Chain	Residues	Atoms					ZeroOcc	AltConf	Trace
1	A	174	Total	C	N	O	P	0	0	0
			3752	1666	695	1216	175			

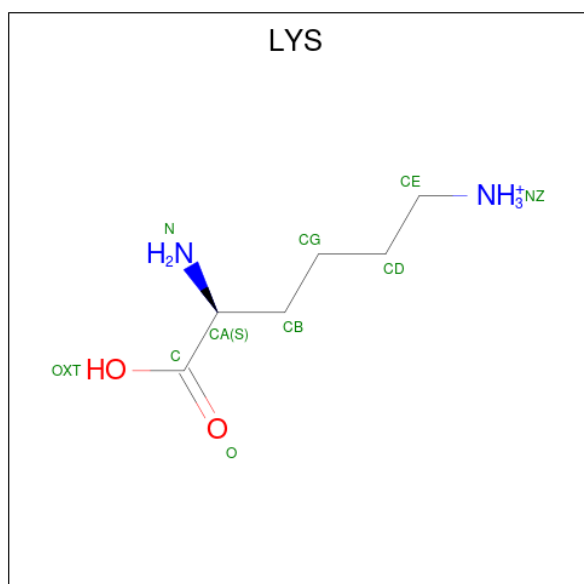
- Molecule 2 is CESIUM ION (CCD ID: CS) (formula: Cs).

Mol	Chain	Residues	Atoms		ZeroOcc	AltConf
2	A	2	Total	Cs	0	0
			2	2		

- Molecule 3 is SODIUM ION (CCD ID: NA) (formula: Na).

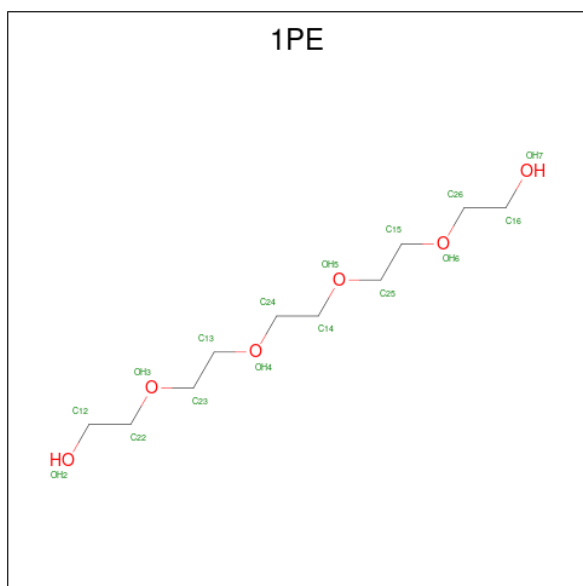
Mol	Chain	Residues	Atoms		ZeroOcc	AltConf
3	A	15	Total	Na	0	0
			15	15		

- Molecule 4 is LYSINE (CCD ID: LYS) (formula: C₆H₁₅N₂O₂).



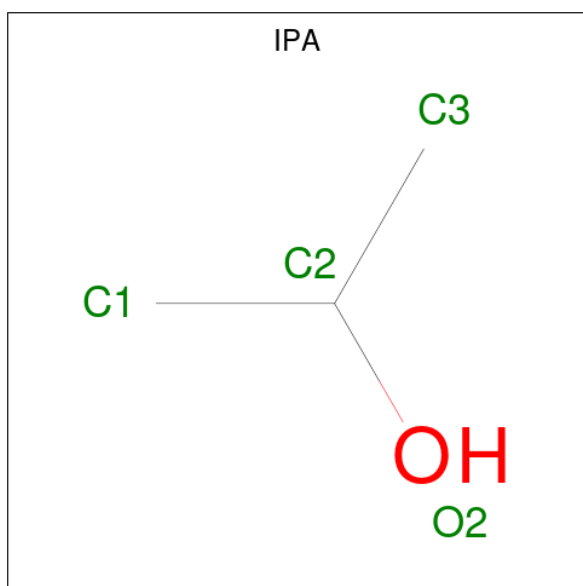
Mol	Chain	Residues	Atoms				ZeroOcc	AltConf
4	A	1	Total	C	N	O	0	0
			10	6	2	2		

- Molecule 5 is PENTAETHYLENE GLYCOL (CCD ID: 1PE) (formula: $C_{10}H_{22}O_6$).



Mol	Chain	Residues	Atoms			ZeroOcc	AltConf
5	A	1	Total	C	O	0	0
			4	3	1		

- Molecule 6 is ISOPROPYL ALCOHOL (CCD ID: IPA) (formula: C_3H_8O).



Mol	Chain	Residues	Atoms			ZeroOcc	AltConf
6	A	1	Total	C	O	0	0
			3	2	1		

- Molecule 7 is water.

Mol	Chain	Residues	Atoms		ZeroOcc	AltConf
7	A	26	Total	O	0	0
			26	26		

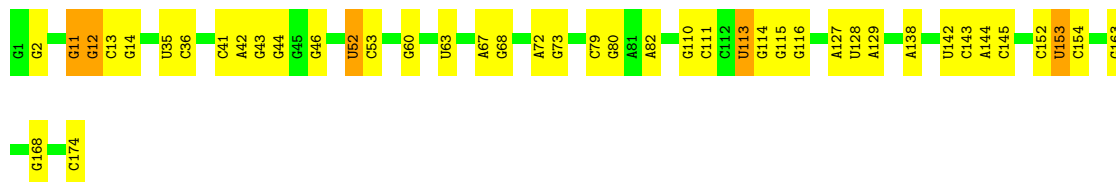
3 Residue-property plots [i](#)

These plots are drawn for all protein, RNA, DNA and oligosaccharide chains in the entry. The first graphic for a chain summarises the proportions of the various outlier classes displayed in the second graphic. The second graphic shows the sequence view annotated by issues in geometry. Residues are color-coded according to the number of geometric quality criteria for which they contain at least one outlier: green = 0, yellow = 1, orange = 2 and red = 3 or more. Stretches of 2 or more consecutive residues without any outlier are shown as a green connector. Residues present in the sample, but not in the model, are shown in grey.

Note EDS was not executed.

- Molecule 1: RNA (174-MER)

Chain A:  75% 22%



4 Data and refinement statistics

EDS was not executed - this section is therefore incomplete.

Property	Value	Source
Space group	P 21 21 21	Depositor
Cell constants a, b, c, α , β , γ	54.25Å 79.04Å 141.98Å 90.00° 90.00° 90.00°	Depositor
Resolution (Å)	20.00 – 2.90	Depositor
% Data completeness (in resolution range)	95.7 (20.00-2.90)	Depositor
R_{merge}	0.12	Depositor
R_{sym}	(Not available)	Depositor
$\langle I/\sigma(I) \rangle$ ¹	2.04 (at 2.88Å)	Xtriage
Refinement program	REFMAC 5.2.0019	Depositor
R, R_{free}	0.203 , 0.248	Depositor
Wilson B-factor (Å ²)	39.4	Xtriage
Anisotropy	0.713	Xtriage
L-test for twinning ²	$\langle L \rangle = 0.48$, $\langle L^2 \rangle = 0.32$	Xtriage
Estimated twinning fraction	No twinning to report.	Xtriage
Total number of atoms	3812	wwPDB-VP
Average B, all atoms (Å ²)	32.0	wwPDB-VP

Xtriage's analysis on translational NCS is as follows: *The largest off-origin peak in the Patterson function is 5.52% of the height of the origin peak. No significant pseudotranslation is detected.*

¹Intensities estimated from amplitudes.

²Theoretical values of $\langle |L| \rangle$, $\langle L^2 \rangle$ for acentric reflections are 0.5, 0.333 respectively for untwinned datasets, and 0.375, 0.2 for perfectly twinned datasets.

5 Model quality

5.1 Standard geometry

Bond lengths and bond angles in the following residue types are not validated in this section: CS, CCC, IPA, NA, 1PE

The Z score for a bond length (or angle) is the number of standard deviations the observed value is removed from the expected value. A bond length (or angle) with $|Z| > 5$ is considered an outlier worth inspection. RMSZ is the root-mean-square of all Z scores of the bond lengths (or angles).

Mol	Chain	Bond lengths		Bond angles	
		RMSZ	$\# Z > 5$	RMSZ	$\# Z > 5$
1	A	0.49	0/4174	0.94	4/6514 (0.1%)

Chiral center outliers are detected by calculating the chiral volume of a chiral center and verifying if the center is modelled as a planar moiety or with the opposite hand. A planarity outlier is detected by checking planarity of atoms in a peptide group, atoms in a mainchain group or atoms of a sidechain that are expected to be planar.

Mol	Chain	#Chirality outliers	#Planarity outliers
1	A	1	0

There are no bond length outliers.

All (4) bond angle outliers are listed below:

Mol	Chain	Res	Type	Atoms	Z	Observed($^{\circ}$)	Ideal($^{\circ}$)
1	A	113	U	C4'-C3'-C2'	-5.61	96.99	102.60
1	A	52	U	P-O3'-C3'	5.59	128.59	120.20
1	A	153	U	C1'-O4'-C4'	-5.28	104.42	109.70
1	A	128	U	N1-C1'-C2'	5.06	119.59	112.00

All (1) chirality outliers are listed below:

Mol	Chain	Res	Type	Atom
1	A	174	CCC	C3'

There are no planarity outliers.

5.2 Too-close contacts [i](#)

In the following table, the Non-H and H(model) columns list the number of non-hydrogen atoms and hydrogen atoms in the chain respectively. The H(added) column lists the number of hydrogen atoms added and optimized by MolProbity. The Clashes column lists the number of clashes within the asymmetric unit, whereas Symm-Clashes lists symmetry-related clashes.

Mol	Chain	Non-H	H(model)	H(added)	Clashes	Symm-Clashes
1	A	3752	0	1884	9	0
2	A	2	0	0	0	0
3	A	15	0	0	0	0
4	A	10	0	12	2	0
5	A	4	0	2	0	0
6	A	3	0	0	0	0
7	A	26	0	0	0	0
All	All	3812	0	1898	9	0

The all-atom clashscore is defined as the number of clashes found per 1000 atoms (including hydrogen atoms). The all-atom clashscore for this structure is 2.

The worst 5 of 9 close contacts within the same asymmetric unit are listed below, sorted by their clash magnitude.

Atom-1	Atom-2	Interatomic distance (Å)	Clash overlap (Å)
1:A:114:G:HO2'	4:A:175:LYS:N	1.99	0.60
1:A:67:A:H2'	1:A:68:G:O4'	2.10	0.51
1:A:35:U:H2'	1:A:36:C:O4'	2.14	0.47
1:A:142:U:H2'	1:A:143:C:C6	2.51	0.46
1:A:144:A:H2'	1:A:145:C:C6	2.50	0.46

There are no symmetry-related clashes.

5.3 Torsion angles [i](#)

5.3.1 Protein backbone [i](#)

There are no protein molecules in this entry.

5.3.2 Protein sidechains [i](#)

There are no protein molecules in this entry.

5.3.3 RNA [i](#)

Mol	Chain	Analysed	Backbone Outliers	Pucker Outliers
1	A	173/174 (99%)	27 (15%)	5 (2%)

5 of 27 RNA backbone outliers are listed below:

Mol	Chain	Res	Type
1	A	2	G
1	A	11	G
1	A	12	G
1	A	13	C
1	A	14	G

All (5) RNA pucker outliers are listed below:

Mol	Chain	Res	Type
1	A	11	G
1	A	13	C
1	A	42	A
1	A	52	U
1	A	153	U

5.4 Non-standard residues in protein, DNA, RNA chains [i](#)

Mogul was not executed - this section is therefore empty.

5.5 Carbohydrates [i](#)

Mogul was not executed - this section is therefore empty.

5.6 Ligand geometry [i](#)

Mogul was not executed - this section is therefore empty.

5.7 Other polymers [i](#)

Mogul was not executed - this section is therefore empty.

5.8 Polymer linkage issues ⓘ

There are no chain breaks in this entry.

6 Fit of model and data

6.1 Protein, DNA and RNA chains

EDS was not executed - this section is therefore empty.

6.2 Non-standard residues in protein, DNA, RNA chains

EDS was not executed - this section is therefore empty.

6.3 Carbohydrates

EDS was not executed - this section is therefore empty.

6.4 Ligands

EDS was not executed - this section is therefore empty.

6.5 Other polymers

EDS was not executed - this section is therefore empty.