



# wwPDB EM Validation Summary Report ⓘ

Mar 10, 2026 – 06:24 PM UTC

PDB ID : 7D7D / pdb\_00007d7d  
EMDB ID : EMD-30605  
Title : CryoEM structure of gp45-dependent transcription activation complex  
Authors : Shi, J.; Wen, A.; Jin, S.; Feng, Y.  
Deposited on : 2020-10-03  
Resolution : 4.50 Å(reported)

This is a wwPDB EM Validation Summary Report for a publicly released PDB entry.

We welcome your comments at [validation@mail.wwpdb.org](mailto:validation@mail.wwpdb.org)

A user guide is available at

<https://www.wwpdb.org/validation/2017/EMValidationReportHelp>

with specific help available everywhere you see the ⓘ symbol.

The types of validation reports are described at

<http://www.wwpdb.org/validation/2017/FAQs#types>.

---

The following versions of software and data (see [references ⓘ](#)) were used in the production of this report:

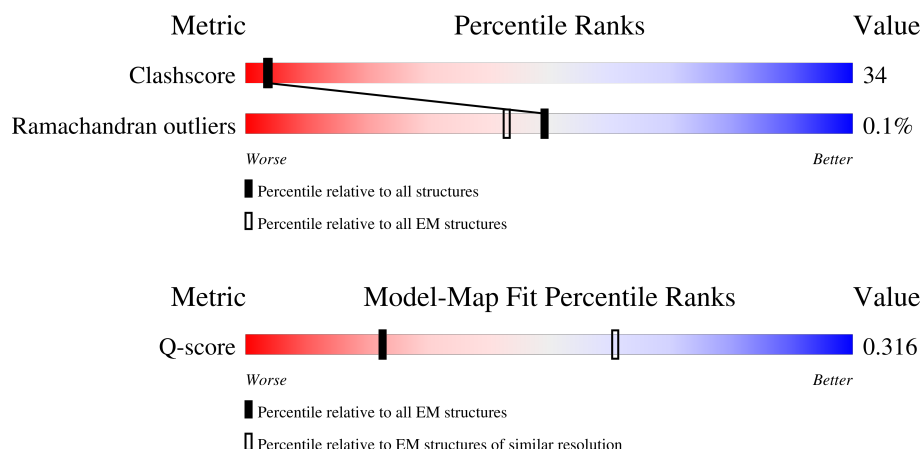
EMDB validation analysis : 0.0.1.dev132  
MolProbity : 4-5-2 with Phenix2.0  
Percentile statistics : 20250101.v01 (using entries in the PDB archive January 1st 2025)  
EM percentile statistics : 202505.v01 (Using data in the EMDB archive up until May 2025)  
MapQ : 1.9.13  
Ideal geometry (proteins) : Engh & Huber (2001)  
Ideal geometry (DNA, RNA) : Parkinson et al. (1996)  
Validation Pipeline (wwPDB-VP) : 2.49

# 1 Overall quality at a glance

The following experimental techniques were used to determine the structure:  
*ELECTRON MICROSCOPY*

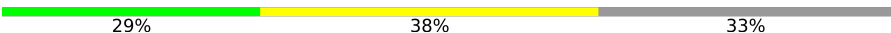
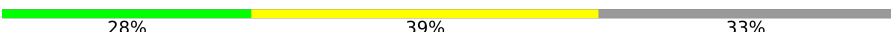
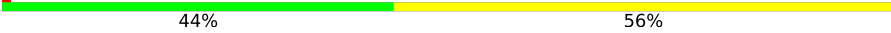

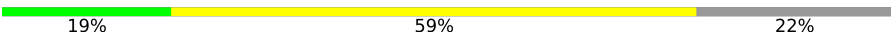
The reported resolution of this entry is 4.50 Å.

Percentile scores (ranging between 0-100) for global validation metrics of the entry are shown in the following graphic. The table shows the number of entries on which the scores are based.



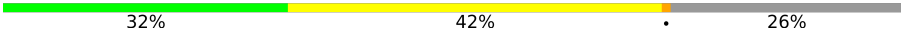
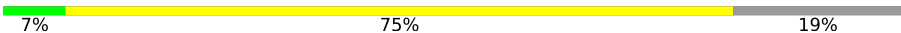



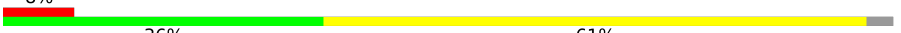
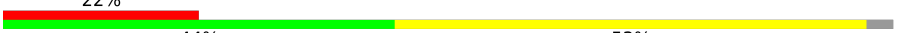
Metric	Whole archive (#Entries)	EM structures (#Entries)	Similar EM resolution (#Entries, resolution range(Å))
Clashscore	229148	23984	-
Ramachandran outliers	224038	23583	-
Q-score	-	25397	2937 ( 4.00 - 5.00 )

The table below summarises the geometric issues observed across the polymeric chains and their fit to the map. The red, orange, yellow and green segments of the bar indicate the fraction of residues that contain outliers for  $\geq 3$ , 2, 1 and 0 types of geometric quality criteria respectively. A grey segment represents the fraction of residues that are not modelled. The numeric value for each fraction is indicated below the corresponding segment, with a dot representing fractions  $\leq 5\%$ . The upper red bar (where present) indicates the fraction of residues that have poor fit to the EM map (all-atom inclusion  $< 40\%$ ). The numeric value is given above the bar.

Mol	Chain	Length	Quality of chain
1	A	329	 29% 38% 33%
1	B	329	 28% 39% 33%
2	C	1342	 44% 56%
3	D	1407	 41% 54% 5%
4	T	59	 19% 59% 22%

*Continued on next page...*

*Continued from previous page...*

Mol	Chain	Length	Quality of chain
5	F	185	
6	N	59	
7	K	132	
8	E	91	
9	G	236	
9	H	236	
9	I	236	

## 2 Entry composition

There are 11 unique types of molecules in this entry. The entry contains 33755 atoms, of which 0 are hydrogens and 0 are deuteriums.

In the tables below, the AltConf column contains the number of residues with at least one atom in alternate conformation and the Trace column contains the number of residues modelled with at most 2 atoms.

- Molecule 1 is a protein called DNA-directed RNA polymerase subunit alpha.

Mol	Chain	Residues	Atoms					AltConf	Trace
1	A	219	Total	C	N	O	S	0	0
			1686	1056	298	326	6		
1	B	219	Total	C	N	O	S	0	0
			1689	1056	298	329	6		

- Molecule 2 is a protein called DNA-directed RNA polymerase subunit beta.

Mol	Chain	Residues	Atoms					AltConf	Trace
2	C	1340	Total	C	N	O	S	0	0
			10567	6631	1841	2052	43		

- Molecule 3 is a protein called DNA-directed RNA polymerase subunit beta'.

Mol	Chain	Residues	Atoms					AltConf	Trace
3	D	1335	Total	C	N	O	S	0	0
			10384	6524	1851	1959	50		

- Molecule 4 is a DNA chain called DNA (template strand).

Mol	Chain	Residues	Atoms					AltConf	Trace
4	T	46	Total	C	N	O	P	0	0
			939	451	158	284	46		

- Molecule 5 is a protein called gp55.

Mol	Chain	Residues	Atoms					AltConf	Trace
5	F	137	Total	C	N	O	S	0	0
			1128	720	189	214	5		

- Molecule 6 is a DNA chain called DNA (nontemplate strand).

Mol	Chain	Residues	Atoms					AltConf	Trace
6	N	48	Total	C	N	O	P	0	0
			990	471	192	279	48		

- Molecule 7 is a protein called RNA polymerase-associated protein Gp33.

Mol	Chain	Residues	Atoms					AltConf	Trace
7	K	71	Total	C	N	O	S	0	0
			558	356	89	110	3		

There are 20 discrepancies between the modelled and reference sequences:

Chain	Residue	Modelled	Actual	Comment	Reference
K	-19	MET	-	initiating methionine	UNP P13338
K	-18	GLY	-	expression tag	UNP P13338
K	-17	SER	-	expression tag	UNP P13338
K	-16	SER	-	expression tag	UNP P13338
K	-15	HIS	-	expression tag	UNP P13338
K	-14	HIS	-	expression tag	UNP P13338
K	-13	HIS	-	expression tag	UNP P13338
K	-12	HIS	-	expression tag	UNP P13338
K	-11	HIS	-	expression tag	UNP P13338
K	-10	HIS	-	expression tag	UNP P13338
K	-9	SER	-	expression tag	UNP P13338
K	-8	SER	-	expression tag	UNP P13338
K	-7	GLY	-	expression tag	UNP P13338
K	-6	LEU	-	expression tag	UNP P13338
K	-5	VAL	-	expression tag	UNP P13338
K	-4	PRO	-	expression tag	UNP P13338
K	-3	ARG	-	expression tag	UNP P13338
K	-2	GLY	-	expression tag	UNP P13338
K	-1	SER	-	expression tag	UNP P13338
K	0	HIS	-	expression tag	UNP P13338

- Molecule 8 is a protein called DNA-directed RNA polymerase subunit omega.

Mol	Chain	Residues	Atoms					AltConf	Trace
8	E	71	Total	C	N	O	S	0	0
			564	345	108	110	1		

- Molecule 9 is a protein called DNA polymerase clamp.

Mol	Chain	Residues	Atoms					AltConf	Trace
9	G	228	Total	C	N	O	S	0	0
			1749	1113	288	342	6		
9	H	228	Total	C	N	O	S	0	0
			1749	1113	288	342	6		
9	I	228	Total	C	N	O	S	0	0
			1749	1113	288	342	6		

There are 24 discrepancies between the modelled and reference sequences:

Chain	Residue	Modelled	Actual	Comment	Reference
G	229	LEU	-	expression tag	UNP P04525
G	230	GLU	-	expression tag	UNP P04525
G	231	HIS	-	expression tag	UNP P04525
G	232	HIS	-	expression tag	UNP P04525
G	233	HIS	-	expression tag	UNP P04525
G	234	HIS	-	expression tag	UNP P04525
G	235	HIS	-	expression tag	UNP P04525
G	236	HIS	-	expression tag	UNP P04525
H	229	LEU	-	expression tag	UNP P04525
H	230	GLU	-	expression tag	UNP P04525
H	231	HIS	-	expression tag	UNP P04525
H	232	HIS	-	expression tag	UNP P04525
H	233	HIS	-	expression tag	UNP P04525
H	234	HIS	-	expression tag	UNP P04525
H	235	HIS	-	expression tag	UNP P04525
H	236	HIS	-	expression tag	UNP P04525
I	229	LEU	-	expression tag	UNP P04525
I	230	GLU	-	expression tag	UNP P04525
I	231	HIS	-	expression tag	UNP P04525
I	232	HIS	-	expression tag	UNP P04525
I	233	HIS	-	expression tag	UNP P04525
I	234	HIS	-	expression tag	UNP P04525
I	235	HIS	-	expression tag	UNP P04525
I	236	HIS	-	expression tag	UNP P04525

- Molecule 10 is MAGNESIUM ION (CCD ID: MG) (formula: Mg).

Mol	Chain	Residues	Atoms		AltConf
10	D	1	Total	Mg	0
			1	1	

- Molecule 11 is ZINC ION (CCD ID: ZN) (formula: Zn).

Mol	Chain	Residues	Atoms		AltConf
11	D	2	Total	Zn	0
			2	2	





Chain C:




RET	Y2	Y3	Y4	Y5	Y6	Y7	Y8	Y9	Y10	Y11	Y12	Y13	Y14	Y15	Y16	Y17	Y18	Y19	Y20	Y21	Y22	Y23	Y24	Y25	Y26	Y27	Y28	Y29	Y30	Y31	Y32	Y33	Y34	Y35	Y36	Y37	Y38	Y39	Y40	Y41	Y42	Y43	Y44	Y45	Y46	Y47	Y48	Y49	Y50	Y51	Y52	Y53	Y54	Y55	Y56	Y57	Y58	Y59	Y60	Y61	Y62	Y63	Y64	Y65	Y66	Y67	Y68	Y69	Y70	Y71	Y72	Y73	Y74	Y75	Y76	Y77	Y78	Y79	Y80	Y81	Y82	Y83	Y84	Y85	Y86	Y87	Y88	Y89	Y90	Y91	Y92	Y93	Y94	Y95	Y96	Y97	Y98	Y99	Y100	Y101	Y102	Y103	Y104	Y105	Y106	Y107	Y108	Y109	Y110	Y111	Y112	Y113	Y114	Y115	Y116	Y117	Y118	Y119	Y120	Y121	Y122	Y123	Y124	Y125	Y126	Y127	Y128	Y129	Y130	Y131	Y132	Y133	Y134	Y135	Y136	Y137	Y138	Y139	Y140	Y141	Y142	Y143	Y144	Y145	Y146	Y147	Y148	Y149	Y150	Y151	Y152	Y153	Y154	Y155	Y156	Y157	Y158	Y159	Y160	Y161	Y162	Y163	Y164	Y165	Y166	Y167	Y168	Y169	Y170	Y171	Y172	Y173	Y174	Y175	Y176	Y177	Y178	Y179	Y180	Y181	Y182	Y183	Y184	Y185	Y186	Y187	Y188	Y189	Y190	Y191	Y192	Y193	Y194	Y195	Y196	Y197	Y198	Y199	Y200	Y201	Y202	Y203	Y204	Y205	Y206	Y207	Y208	Y209	Y210	Y211	Y212	Y213	Y214	Y215	Y216	Y217	Y218	Y219	Y220	Y221	Y222	Y223	Y224	Y225	Y226	Y227	Y228	Y229	Y230	Y231	Y232	Y233	Y234	Y235	Y236	Y237	Y238	Y239	Y240	Y241	Y242	Y243	Y244	Y245	Y246	Y247	Y248	Y249	Y250	Y251	Y252	Y253	Y254	Y255	Y256	Y257	Y258	Y259	Y260	Y261	Y262	Y263	Y264	Y265	Y266	Y267	Y268	Y269	Y270	Y271	Y272	Y273	Y274	Y275	Y276	Y277	Y278	Y279	Y280	Y281	Y282	Y283	Y284	Y285	Y286	Y287	Y288	Y289	Y290	Y291	Y292	Y293	Y294	Y295	Y296	Y297	Y298	Y299	Y300	Y301	Y302	Y303	Y304	Y305	Y306	Y307	Y308	Y309	Y310	Y311	Y312	Y313	Y314	Y315	Y316	Y317	Y318	Y319	Y320	Y321	Y322	Y323	Y324	Y325	Y326	Y327	Y328	Y329	Y330	Y331	Y332	Y333	Y334	Y335	Y336	Y337	Y338	Y339	Y340	Y341	Y342	Y343	Y344	Y345	Y346	Y347	Y348	Y349	Y350	Y351	Y352	Y353	Y354	Y355	Y356	Y357	Y358	Y359	Y360	Y361	Y362	Y363	Y364	Y365	Y366	Y367	Y368	Y369	Y370	Y371	Y372	Y373	Y374	Y375	Y376	Y377	Y378	Y379	Y380	Y381	Y382	Y383	Y384	Y385	Y386	Y387	Y388	Y389	Y390	Y391	Y392	Y393	Y394	Y395	Y396	Y397	Y398	Y399	Y400	Y401	Y402	Y403	Y404	Y405	Y406	Y407	Y408	Y409	Y410	Y411	Y412	Y413	Y414	Y415	Y416	Y417	Y418	Y419	Y420	Y421	Y422	Y423	Y424	Y425	Y426	Y427	Y428	Y429	Y430	Y431	Y432	Y433	Y434	Y435	Y436	Y437	Y438	Y439	Y440	Y441	Y442	Y443	Y444	Y445	Y446	Y447	Y448	Y449	Y450	Y451	Y452	Y453	Y454	Y455	Y456	Y457	Y458	Y459	Y460	Y461	Y462	Y463	Y464	Y465	Y466	Y467	Y468	Y469	Y470	Y471	Y472	Y473	Y474	Y475	Y476	Y477	Y478	Y479	Y480	Y481	Y482	Y483	Y484	Y485	Y486	Y487	Y488	Y489	Y490	Y491	Y492	Y493	Y494	Y495	Y496	Y497	Y498	Y499	Y500	Y501	Y502	Y503	Y504	Y505	Y506	Y507	Y508	Y509	Y510	Y511	Y512	Y513	Y514	Y515	Y516	Y517	Y518	Y519	Y520	Y521	Y522	Y523	Y524	Y525	Y526	Y527	Y528	Y529	Y530	Y531	Y532	Y533	Y534	Y535	Y536	Y537	Y538	Y539	Y540	Y541	Y542	Y543	Y544	Y545	Y546	Y547	Y548	Y549	Y550	Y551	Y552	Y553	Y554	Y555	Y556	Y557	Y558	Y559	Y560	Y561	Y562	Y563	Y564	Y565	Y566	Y567	Y568	Y569	Y570	Y571	Y572	Y573	Y574	Y575	Y576	Y577	Y578	Y579	Y580	Y581	Y582	Y583	Y584	Y585	Y586	Y587	Y588	Y589	Y590	Y591	Y592	Y593	Y594	Y595	Y596	Y597	Y598	Y599	Y600	Y601	Y602	Y603	Y604	Y605	Y606	Y607	Y608	Y609	Y610	Y611	Y612	Y613	Y614	Y615	Y616	Y617	Y618	Y619	Y620	Y621	Y622	Y623	Y624	Y625	Y626	Y627	Y628	Y629	Y630	Y631	Y632	Y633	Y634	Y635	Y636	Y637	Y638	Y639	Y640	Y641	Y642	Y643	Y644	Y645	Y646	Y647	Y648	Y649	Y650	Y651	Y652	Y653	Y654	Y655	Y656	Y657	Y658	Y659	Y660	Y661	Y662	Y663	Y664	Y665	Y666	Y667	Y668	Y669	Y670	Y671	Y672	Y673	Y674	Y675	Y676	Y677	Y678	Y679	Y680	Y681	Y682	Y683	Y684	Y685	Y686	Y687	Y688	Y689	Y690	Y691	Y692	Y693	Y694	Y695	Y696	Y697	Y698	Y699	Y700	Y701	Y702	Y703	Y704	Y705	Y706	Y707	Y708	Y709	Y710	Y711	Y712	Y713	Y714	Y715	Y716	Y717	Y718	Y719	Y720	Y721	Y722	Y723	Y724	Y725	Y726	Y727	Y728	Y729	Y730	Y731	Y732	Y733	Y734	Y735	Y736	Y737	Y738	Y739	Y740	Y741	Y742	Y743	Y744	Y745	Y746	Y747	Y748	Y749	Y750	Y751	Y752	Y753	Y754	Y755	Y756	Y757	Y758	Y759	Y760	Y761	Y762	Y763	Y764	Y765	Y766	Y767	Y768	Y769	Y770	Y771	Y772	Y773	Y774	Y775	Y776	Y777	Y778	Y779	Y780	Y781	Y782	Y783	Y784	Y785	Y786	Y787	Y788	Y789	Y790	Y791	Y792	Y793	Y794	Y795	Y796	Y797	Y798	Y799	Y800	Y801	Y802	Y803	Y804	Y805	Y806	Y807	Y808	Y809	Y810	Y811	Y812	Y813	Y814	Y815	Y816	Y817	Y818	Y819	Y820	Y821	Y822	Y823	Y824	Y825	Y826	Y827	Y828	Y829	Y830	Y831	Y832	Y833	Y834	Y835	Y836	Y837	Y838	Y839	Y840	Y841	Y842	Y843	Y844	Y845	Y846	Y847	Y848	Y849	Y850	Y851	Y852	Y853	Y854	Y855	Y856	Y857	Y858	Y859	Y860	Y861	Y862	Y863	Y864	Y865	Y866	Y867	Y868	Y869	Y870	Y871	Y872	Y873	Y874	Y875	Y876	Y877	Y878	Y879	Y880	Y881	Y882	Y883	Y884	Y885	Y886	Y887	Y888	Y889	Y890	Y891	Y892	Y893	Y894	Y895	Y896	Y897	Y898	Y899	Y900	Y901	Y902	Y903	Y904	Y905	Y906	Y907	Y908	Y909	Y910	Y911	Y912	Y913	Y914	Y915	Y916	Y917	Y918	Y919	Y920	Y921	Y922	Y923	Y924	Y925	Y926	Y927	Y928	Y929	Y930	Y931	Y932	Y933	Y934	Y935	Y936	Y937	Y938	Y939	Y940	Y941	Y942	Y943	Y944	Y945	Y946	Y947	Y948	Y949	Y950	Y951	Y952	Y953	Y954	Y955	Y956	Y957	Y958	Y959	Y960	Y961	Y962	Y963	Y964	Y965	Y966	Y967	Y968	Y969	Y970	Y971	Y972	Y973	Y974	Y975	Y976	Y977	Y978	Y979	Y980	Y981	Y982	Y983	Y984	Y985	Y986	Y987	Y988	Y989	Y990	Y991	Y992	Y993	Y994	Y995	Y996	Y997	Y998	Y999	Y1000	Y1001	Y1002	Y1003	Y1004	Y1005	Y1006	Y1007	Y1008	Y1009	Y1010	Y1011	Y1012	Y1013	Y1014	Y1015	Y1016	Y1017	Y1018	Y1019	Y1020	Y1021	Y1022	Y1023	Y1024	Y1025	Y1026	Y1027	Y1028	Y1029	Y1030	Y1031	Y1032	Y1033	Y1034	Y1035	Y1036	Y1037	Y1038	Y1039	Y1040	Y1041	Y1042	Y1043	Y1044	Y1045	Y1046	Y1047	Y1048	Y1049	Y1050	Y1051	Y1052	Y1053	Y1054	Y1055	Y1056	Y1057	Y1058	Y1059	Y1060	Y1061	Y1062	Y1063	Y1064	Y1065	Y1066	Y1067	Y1068	Y1069	Y1070	Y1071	Y1072	Y1073	Y1074	Y1075	Y1076	Y1077	Y1078	Y1079	Y1080	Y1081	Y1082	Y1083	Y1084	Y1085	Y1086	Y1087	Y1088	Y1089	Y1090	Y1091	Y1092	Y1093	Y1094	Y1095	Y1096	Y1097	Y1098	Y1099	Y1100	Y1101	Y1102	Y1103	Y1104	Y1105	Y1106	Y1107	Y1108	Y1109	Y1110	Y1111	Y1112	Y1113	Y1114	Y1115	Y1116	Y1117	Y1118	Y1119	Y1120	Y1121	Y1122	Y1123	Y1124	Y1125	Y1126	Y1127	Y1128	Y1129	Y1130	Y1131	Y1132	Y1133	Y1134	Y1135	Y1136	Y1137	Y1138	Y1139	Y1140	Y1141	Y1142	Y1143	Y1144	Y1145	Y1146	Y1147	Y1148	Y1149	Y1150	Y1151	Y1152	Y1153	Y1154	Y1155	Y1156	Y1157	Y1158	Y1159	Y1160	Y1161	Y1162	Y1163	Y1164	Y1165	Y1166	Y1167	Y1168	Y1169	Y1170	Y1171	Y1172	Y1173	Y1174	Y1175	Y1176	Y1177	Y1178	Y1179	Y1180	Y1181	Y1182	Y1183	Y1184	Y1185	Y1186	Y1187	Y1188	Y1189	Y1190	Y1191	Y1192	Y1193	Y1194	Y1195	Y1196	Y1197	Y1198	Y1199	Y1200	Y1201	Y1202	Y1203	Y1204	Y1205	Y1206	Y1207	Y1208	Y1209	Y1210	Y1211	Y1212	Y1213	Y1214	Y1215	Y1216	Y1217	Y1218	Y1219	Y1220	Y1221	Y1222	Y1223	Y1224	Y1225	Y1226	Y1227	Y1228	Y1229	Y1230	Y1231	Y1232	Y1233	Y1234	Y1235	Y1236	Y1237	Y1238	Y1239	Y1240	Y1241	Y1242	Y1243	Y1244	Y1245	Y1246	Y1247	Y1248	Y1249	Y1250	Y1251	Y1252	Y1253	Y1254	Y1255	Y1256	Y1257	Y1258	Y1259	Y1260	Y1261	Y1262	Y1263	Y1264	Y1265	Y1266	Y1267	Y1268	Y1269	Y1270	Y1271	Y1272	Y1273	Y1274	Y1275	Y1276	Y1277	Y1278	Y1279	Y1280	Y1281	Y1282	Y1283	Y1284	Y1285	Y1286	Y1287	Y1288	Y1289	Y1290	Y1291	Y1292	Y1293	Y1294	Y1295	Y1296	Y1297	Y1298	Y1299	Y1300	Y1301	Y1302	Y1303	Y1304	Y1305	Y1306	Y1307	Y1308	Y1309	Y1310	Y1311	Y1312	Y1313	Y1314	Y1315	Y1316	Y1317	Y1318	Y1319	Y1320	Y1321	Y1322	Y1323	Y1324
-----	----	----	----	----	----	----	----	----	-----	-----	-----	-----	-----	-----	-----	-----	-----	-----	-----	-----	-----	-----	-----	-----	-----	-----	-----	-----	-----	-----	-----	-----	-----	-----	-----	-----	-----	-----	-----	-----	-----	-----	-----	-----	-----	-----	-----	-----	-----	-----	-----	-----	-----	-----	-----	-----	-----	-----	-----	-----	-----	-----	-----	-----	-----	-----	-----	-----	-----	-----	-----	-----	-----	-----	-----	-----	-----	-----	-----	-----	-----	-----	-----	-----	-----	-----	-----	-----	-----	-----	-----	-----	-----	-----	-----	-----	-----	-----	------	------	------	------	------	------	------	------	------	------	------	------	------	------	------	------	------	------	------	------	------	------	------	------	------	------	------	------	------	------	------	------	------	------	------	------	------	------	------	------	------	------	------	------	------	------	------	------	------	------	------	------	------	------	------	------	------	------	------	------	------	------	------	------	------	------	------	------	------	------	------	------	------	------	------	------	------	------	------	------	------	------	------	------	------	------	------	------	------	------	------	------	------	------	------	------	------	------	------	------	------	------	------	------	------	------	------	------	------	------	------	------	------	------	------	------	------	------	------	------	------	------	------	------	------	------	------	------	------	------	------	------	------	------	------	------	------	------	------	------	------	------	------	------	------	------	------	------	------	------	------	------	------	------	------	------	------	------	------	------	------	------	------	------	------	------	------	------	------	------	------	------	------	------	------	------	------	------	------	------	------	------	------	------	------	------	------	------	------	------	------	------	------	------	------	------	------	------	------	------	------	------	------	------	------	------	------	------	------	------	------	------	------	------	------	------	------	------	------	------	------	------	------	------	------	------	------	------	------	------	------	------	------	------	------	------	------	------	------	------	------	------	------	------	------	------	------	------	------	------	------	------	------	------	------	------	------	------	------	------	------	------	------	------	------	------	------	------	------	------	------	------	------	------	------	------	------	------	------	------	------	------	------	------	------	------	------	------	------	------	------	------	------	------	------	------	------	------	------	------	------	------	------	------	------	------	------	------	------	------	------	------	------	------	------	------	------	------	------	------	------	------	------	------	------	------	------	------	------	------	------	------	------	------	------	------	------	------	------	------	------	------	------	------	------	------	------	------	------	------	------	------	------	------	------	------	------	------	------	------	------	------	------	------	------	------	------	------	------	------	------	------	------	------	------	------	------	------	------	------	------	------	------	------	------	------	------	------	------	------	------	------	------	------	------	------	------	------	------	------	------	------	------	------	------	------	------	------	------	------	------	------	------	------	------	------	------	------	------	------	------	------	------	------	------	------	------	------	------	------	------	------	------	------	------	------	------	------	------	------	------	------	------	------	------	------	------	------	------	------	------	------	------	------	------	------	------	------	------	------	------	------	------	------	------	------	------	------	------	------	------	------	------	------	------	------	------	------	------	------	------	------	------	------	------	------	------	------	------	------	------	------	------	------	------	------	------	------	------	------	------	------	------	------	------	------	------	------	------	------	------	------	------	------	------	------	------	------	------	------	------	------	------	------	------	------	------	------	------	------	------	------	------	------	------	------	------	------	------	------	------	------	------	------	------	------	------	------	------	------	------	------	------	------	------	------	------	------	------	------	------	------	------	------	------	------	------	------	------	------	------	------	------	------	------	------	------	------	------	------	------	------	------	------	------	------	------	------	------	------	------	------	------	------	------	------	------	------	------	------	------	------	------	------	------	------	------	------	------	------	------	------	------	------	------	------	------	------	------	------	------	------	------	------	------	------	------	------	------	------	------	------	------	------	------	------	------	------	------	------	------	------	------	------	------	------	------	------	------	------	------	------	------	------	------	------	------	------	------	------	------	------	------	------	------	------	------	------	------	------	------	------	------	------	------	------	------	------	------	------	------	------	------	------	------	------	------	------	------	------	------	------	------	------	------	------	------	------	------	------	------	------	------	------	------	------	------	------	------	------	------	------	------	------	------	------	------	------	------	------	------	------	------	------	------	------	------	------	------	------	------	------	------	------	------	------	------	------	------	------	------	------	------	------	------	------	------	------	------	------	------	------	------	------	------	------	------	------	------	------	------	------	------	------	------	------	------	------	------	------	------	------	------	------	------	------	------	------	------	------	------	------	------	------	------	------	------	------	------	------	------	------	------	------	------	------	------	------	------	------	------	------	------	------	------	------	------	------	------	------	------	------	------	------	------	------	------	------	------	------	------	------	------	------	------	------	------	------	------	------	------	------	------	------	------	------	------	------	------	------	------	------	------	------	------	------	------	------	------	------	------	------	------	------	------	------	------	------	------	------	------	------	------	------	------	------	------	------	------	------	------	------	------	------	------	------	------	------	------	------	------	------	------	------	------	------	------	------	------	------	------	------	------	------	------	------	------	------	------	------	-------	-------	-------	-------	-------	-------	-------	-------	-------	-------	-------	-------	-------	-------	-------	-------	-------	-------	-------	-------	-------	-------	-------	-------	-------	-------	-------	-------	-------	-------	-------	-------	-------	-------	-------	-------	-------	-------	-------	-------	-------	-------	-------	-------	-------	-------	-------	-------	-------	-------	-------	-------	-------	-------	-------	-------	-------	-------	-------	-------	-------	-------	-------	-------	-------	-------	-------	-------	-------	-------	-------	-------	-------	-------	-------	-------	-------	-------	-------	-------	-------	-------	-------	-------	-------	-------	-------	-------	-------	-------	-------	-------	-------	-------	-------	-------	-------	-------	-------	-------	-------	-------	-------	-------	-------	-------	-------	-------	-------	-------	-------	-------	-------	-------	-------	-------	-------	-------	-------	-------	-------	-------	-------	-------	-------	-------	-------	-------	-------	-------	-------	-------	-------	-------	-------	-------	-------	-------	-------	-------	-------	-------	-------	-------	-------	-------	-------	-------	-------	-------	-------	-------	-------	-------	-------	-------	-------	-------	-------	-------	-------	-------	-------	-------	-------	-------	-------	-------	-------	-------	-------	-------	-------	-------	-------	-------	-------	-------	-------	-------	-------	-------	-------	-------	-------	-------	-------	-------	-------	-------	-------	-------	-------	-------	-------	-------	-------	-------	-------	-------	-------	-------	-------	-------	-------	-------	-------	-------	-------	-------	-------	-------	-------	-------	-------	-------	-------	-------	-------	-------	-------	-------	-------	-------	-------	-------	-------	-------	-------	-------	-------	-------	-------	-------	-------	-------	-------	-------	-------	-------	-------	-------	-------	-------	-------	-------	-------	-------	-------	-------	-------	-------	-------	-------	-------	-------	-------	-------	-------	-------	-------	-------	-------	-------	-------	-------	-------	-------	-------	-------	-------	-------	-------	-------	-------	-------	-------	-------	-------	-------	-------	-------	-------	-------	-------	-------	-------	-------	-------	-------	-------	-------	-------	-------	-------	-------	-------	-------	-------	-------	-------	-------	-------	-------	-------	-------	-------	-------	-------	-------	-------	-------	-------	-------	-------	-------	-------	-------	-------	-------	-------	-------	-------	-------	-------






- Molecule 6: DNA (nontemplate strand)

Chain N:  7% 75% 19%

DC DT DA DA T-1 A2 G3 A4 G5 G6 T7 C8 C9 A9 G10 C11 A12 C13 T14 A15 A16 T17 A18 C19 T20 G21 A22 G23 A24 G25 A26 T27 A28 T29 A30 A31 DT DA DC DT DC DC DT G38 A39 T40 A41 C42 T43 G44 A45 A46 G47 C48 A49 G50 C51 C52

- Molecule 7: RNA polymerase-associated protein Gp33


Chain K:  23% 31% 46%

MET GLY SER SER HIS HIS HIS HIS HIS HIS SER SER LEU VAL PRO ARG GLY SER HIS MET THR GLN PHE SER LEU ASN ASP ILE ARG ARG PRO VAL ASP T28 A29 THR A30 GLY LEU LEU SER ILE LYS LYS GLU LYS ASP ASP GLU ILE A32 K33 D36 LYS R37 Q38 E39 N40 G41

E42 I43 I44 E45 K46 M47 V48 E49 E50 M53 S54 Y55 A58 T59 T60 L63 E64 E65 N66 S67 I68 P69 E70 T71 Q72 K75 F76 I77 P78 S79 G80 I81 I82 E83 K84 I85 Q86 S87 N93 L94 L95 R96 P97 S98 V99 V100 R101 C102 GLU LYS THR ASN THR LEU ASP

PHE LEU LEU


- Molecule 8: DNA-directed RNA polymerase subunit omega

Chain E:  33% 45% 22%

MET A2 R3 V4 T5 V6 Q7 D8 A9 V10 E11 K12 I13 G14 M15 R16 F17 D18 L21 V22 A23 A24 R25 R26 A27 R28 Q29 N30 Q31 K35 V39 P40 K45 T46 I49 A50 L51 R52 E53 I54 E55 E56 G57 L58 L59 Q62 D65 V66 R67 E68 R69 Q70 E71

Q72 GLN GLU GLN GLU ALA ALA GLU GLN VAL THR ALA ILE ALA GLU ARG ARG

- Molecule 9: DNA polymerase clamp

Chain G:  8% 41% 56%

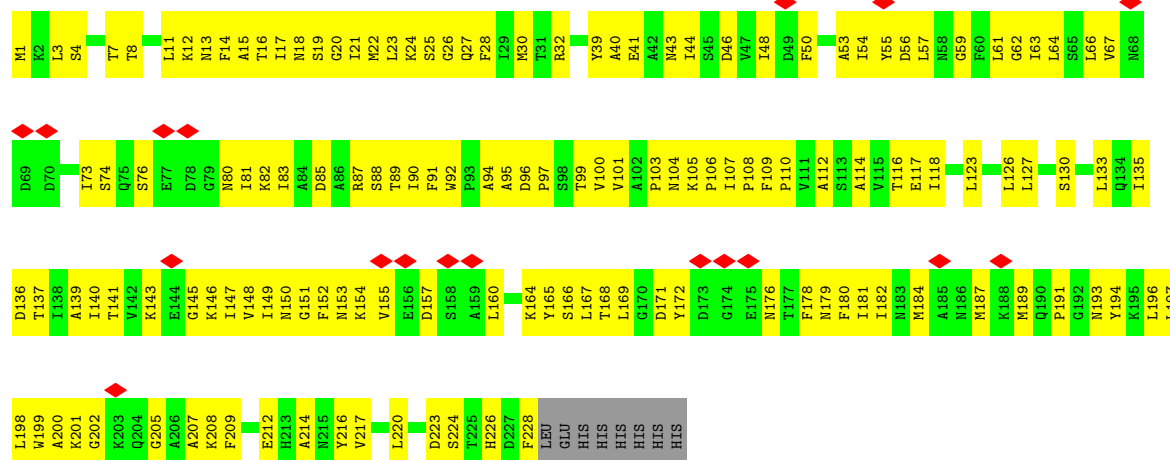
M1 K2 L3 S4 T7 M13 F14 A15 I83 A84 D85 M18 S19 G20 K24 Q27 F28 I29 M30 T31 R32 A33 V34 T37 T38 A39 A40 E41 A42 M43 I44 S45 D46 W47 I48 D49 F50 D51 V52 A53 I54 Y55 D56 G59 I63 L64 S65 L66 W67 N68 D69 D70 A71 E72

I73 S74 E77 D78 G79 N80 R82 I83 A84 D85 A86 R87 S88 T89 I90 F91 W92 P93 A94 A95 D96 V101 A102 N104 K105 P106 F109 A112 S113 A114 V115 T116 E117 I118 K119 A120 E121 D122 L123 Q124 Q125 L126 L127 R128 V129 S130 R131 Q134 I135 D136 T137 I138 A139

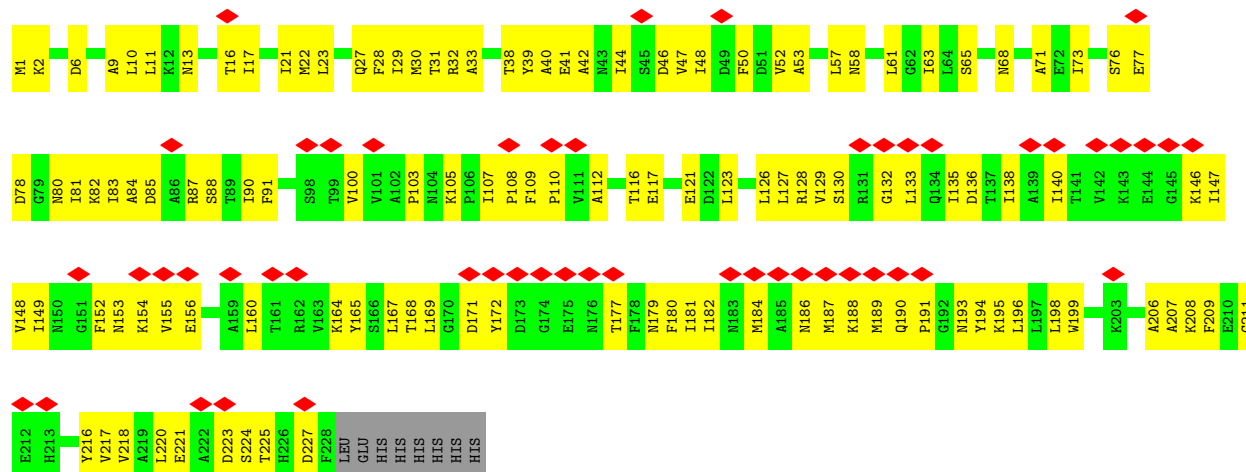
I140 T141 V142 K143 I147 V148 I149 M150 G151 F152 M153 K154 V155 E156 D157 S158 A159 L160 T161 R162 V163 K164 Y165 S166 L167 T168 Y172 M176 T177 F178 M179 F180 M183 M184 P191 G192 N193 Y194 K195 L196 L197 L198 W199 A200 K201 G202 K203 Q204 G205 K208 A214 V218

A219 L220 D223 S224 T225 H226 D227 F228 LEU GLU HIS HIS HIS HIS HIS

- Molecule 9: DNA polymerase clamp



• Molecule 9: DNA polymerase clamp



## 4 Experimental information

Property	Value	Source
EM reconstruction method	SINGLE PARTICLE	Depositor
Imposed symmetry	POINT, Not provided	
Number of particles used	8981	Depositor
Resolution determination method	FSC 0.143 CUT-OFF	Depositor
CTF correction method	PHASE FLIPPING AND AMPLITUDE CORRECTION	Depositor
Microscope	FEI TITAN KRIOS	Depositor
Voltage (kV)	300	Depositor
Electron dose ( $e^-/\text{\AA}^2$ )	59	Depositor
Minimum defocus (nm)	Not provided	
Maximum defocus (nm)	Not provided	
Magnification	Not provided	
Image detector	GATAN K2 SUMMIT (4k x 4k)	Depositor
Maximum map value	0.287	Depositor
Minimum map value	-0.180	Depositor
Average map value	0.000	Depositor
Map value standard deviation	0.006	Depositor
Recommended contour level	0.02	Depositor
Map size (Å)	334.592, 334.592, 334.592	wwPDB
Map dimensions	256, 256, 256	wwPDB
Map angles (°)	90.0, 90.0, 90.0	wwPDB
Pixel spacing (Å)	1.307, 1.307, 1.307	Depositor

## 5 Model quality [i](#)

### 5.1 Standard geometry [i](#)

Bond lengths and bond angles in the following residue types are not validated in this section: MG, ZN

The Z score for a bond length (or angle) is the number of standard deviations the observed value is removed from the expected value. A bond length (or angle) with  $|Z| > 5$  is considered an outlier worth inspection. RMSZ is the root-mean-square of all Z scores of the bond lengths (or angles).

Mol	Chain	Bond lengths		Bond angles	
		RMSZ	$\# Z  > 5$	RMSZ	$\# Z  > 5$
1	A	0.42	0/1706	0.58	0/2312
1	B	0.39	0/1708	0.56	0/2315
2	C	0.45	3/10736 (0.0%)	0.57	0/14487
3	D	0.41	0/10541	0.56	0/14232
4	T	0.43	0/1048	0.58	0/1613
5	F	0.43	0/1149	0.59	0/1546
6	N	0.39	0/1113	0.51	0/1713
7	K	0.28	0/566	0.47	0/763
8	E	0.27	0/566	0.55	0/762
9	G	0.26	0/1778	0.52	0/2410
9	H	0.31	0/1778	0.53	0/2410
9	I	0.25	0/1778	0.50	0/2410
All	All	0.40	3/34467 (0.0%)	0.56	0/46973

All (3) bond length outliers are listed below:

Mol	Chain	Res	Type	Atoms	Z	Observed(Å)	Ideal(Å)
2	C	448	LEU	CA-C	-6.09	1.43	1.52
2	C	658	GLN	CA-C	-5.34	1.45	1.52
2	C	659	GLN	CA-C	-5.01	1.46	1.52

There are no bond angle outliers.

There are no chirality outliers.

There are no planarity outliers.

### 5.2 Too-close contacts [i](#)

In the following table, the Non-H and H(model) columns list the number of non-hydrogen atoms and hydrogen atoms in the chain respectively. The H(added) column lists the number of hydrogen

atoms added and optimized by MolProbity. The Clashes column lists the number of clashes within the asymmetric unit, whereas Symm-Clashes lists symmetry-related clashes.

Mol	Chain	Non-H	H(model)	H(added)	Clashes	Symm-Clashes
1	A	1686	0	1726	119	0
1	B	1689	0	1725	140	0
2	C	10567	0	10585	754	0
3	D	10384	0	10607	710	0
4	T	939	0	526	54	0
5	F	1128	0	1105	79	0
6	N	990	0	540	75	0
7	K	558	0	550	46	0
8	E	564	0	579	36	0
9	G	1749	0	1755	145	0
9	H	1749	0	1755	175	0
9	I	1749	0	1755	106	0
10	D	1	0	0	0	0
11	D	2	0	0	0	0
All	All	33755	0	33208	2279	0

The all-atom clashscore is defined as the number of clashes found per 1000 atoms (including hydrogen atoms). The all-atom clashscore for this structure is 34.

The worst 5 of 2279 close contacts within the same asymmetric unit are listed below, sorted by their clash magnitude.

Atom-1	Atom-2	Interatomic distance (Å)	Clash overlap (Å)
9:H:141:THR:CG2	9:H:179:ASN:HA	1.61	1.29
3:D:1161:GLY:HA3	3:D:1178:THR:O	1.37	1.21
9:H:141:THR:HG22	9:H:179:ASN:HA	1.33	1.09
1:B:33:ARG:NH1	2:C:1081:PRO:HG3	1.68	1.08
5:F:10:TYR:HD1	5:F:49:LEU:HD11	1.19	1.06

There are no symmetry-related clashes.

## 5.3 Torsion angles [i](#)

### 5.3.1 Protein backbone [i](#)

In the following table, the Percentiles column shows the percent Ramachandran outliers of the chain as a percentile score with respect to all PDB entries followed by that with respect to all EM entries.

The Analysed column shows the number of residues for which the backbone conformation was



analysed, and the total number of residues.

Mol	Chain	Analysed	Favoured	Allowed	Outliers	Percentiles	
1	A	215/329 (65%)	175 (81%)	40 (19%)	0	100	100
1	B	215/329 (65%)	188 (87%)	27 (13%)	0	100	100
2	C	1338/1342 (100%)	1096 (82%)	241 (18%)	1 (0%)	48	83
3	D	1329/1407 (94%)	1093 (82%)	235 (18%)	1 (0%)	48	83
5	F	133/185 (72%)	113 (85%)	19 (14%)	1 (1%)	16	53
7	K	69/132 (52%)	58 (84%)	11 (16%)	0	100	100
8	E	69/91 (76%)	59 (86%)	10 (14%)	0	100	100
9	G	226/236 (96%)	209 (92%)	17 (8%)	0	100	100
9	H	226/236 (96%)	211 (93%)	15 (7%)	0	100	100
9	I	226/236 (96%)	209 (92%)	17 (8%)	0	100	100
All	All	4046/4523 (90%)	3411 (84%)	632 (16%)	3 (0%)	49	83

All (3) Ramachandran outliers are listed below:

Mol	Chain	Res	Type
5	F	129	TYR
3	D	764	ARG
2	C	45	GLY

### 5.3.2 Protein sidechains [i](#)

There are no protein residues with a non-rotameric sidechain to report in this entry.

### 5.3.3 RNA [i](#)

There are no RNA molecules in this entry.

## 5.4 Non-standard residues in protein, DNA, RNA chains [i](#)

There are no non-standard protein/DNA/RNA residues in this entry.

## 5.5 Carbohydrates [i](#)

There are no oligosaccharides in this entry.

## 5.6 Ligand geometry

Of 3 ligands modelled in this entry, 3 are monoatomic - leaving 0 for Mogul analysis.

There are no bond length outliers.

There are no bond angle outliers.

There are no chirality outliers.

There are no torsion outliers.

There are no ring outliers.

No monomer is involved in short contacts.

## 5.7 Other polymers

There are no such residues in this entry.

## 5.8 Polymer linkage issues

There are no chain breaks in this entry.

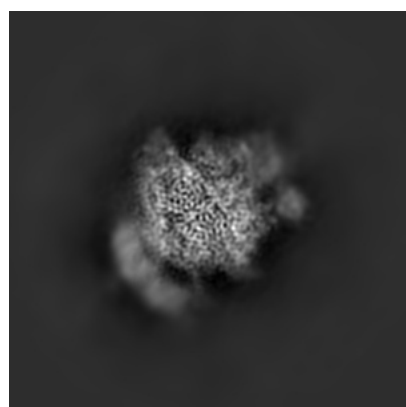
## 6 Map visualisation [i](#)

This section contains visualisations of the EMDB entry EMD-30605. These allow visual inspection of the internal detail of the map and identification of artifacts.

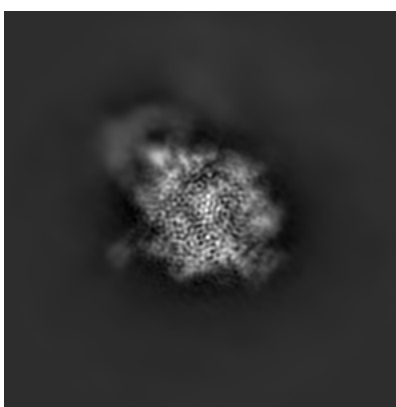
No raw map or half-maps were deposited for this entry and therefore no images, graphs, etc. pertaining to the raw map can be shown.

### 6.1 Orthogonal projections [i](#)

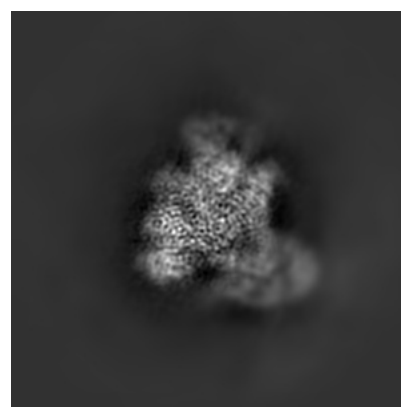
#### 6.1.1 Primary map



X



Y

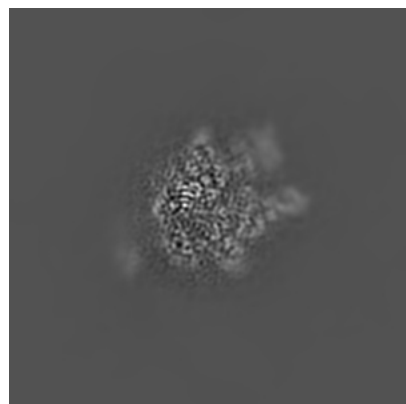


Z

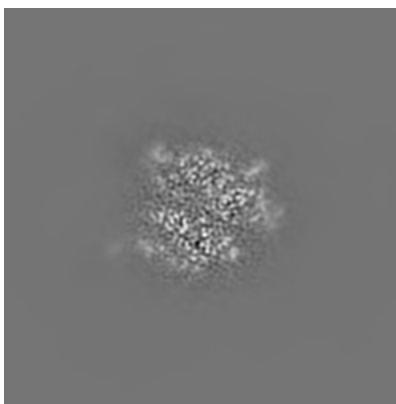
The images above show the map projected in three orthogonal directions.

### 6.2 Central slices [i](#)

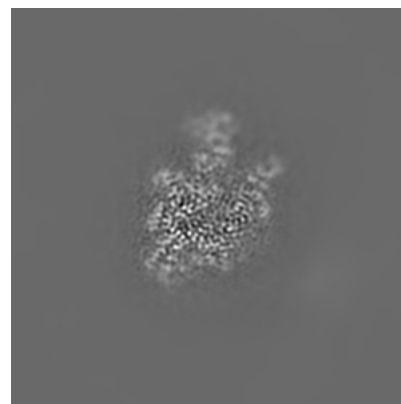
#### 6.2.1 Primary map



X Index: 128



Y Index: 128

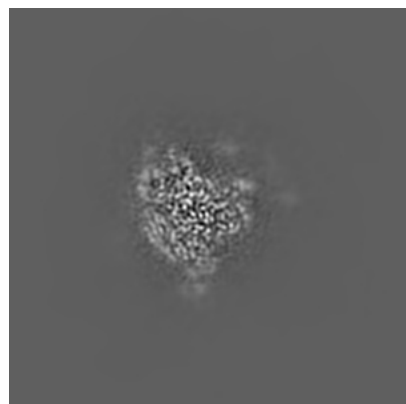


Z Index: 128

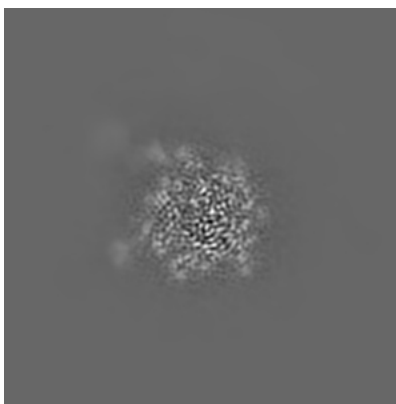
The images above show central slices of the map in three orthogonal directions.

## 6.3 Largest variance slices [i](#)

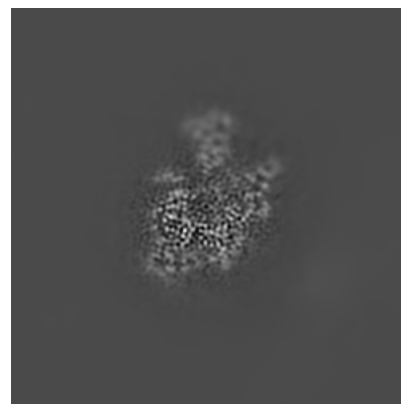
### 6.3.1 Primary map



X Index: 107



Y Index: 114

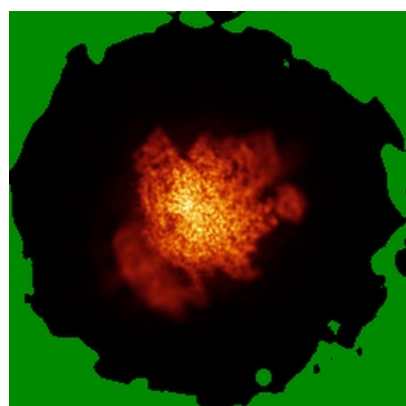


Z Index: 130

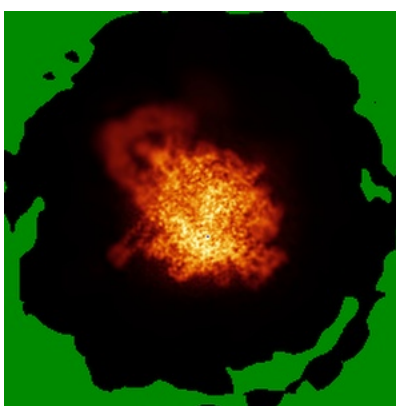
The images above show the largest variance slices of the map in three orthogonal directions.

## 6.4 Orthogonal standard-deviation projections (False-color) [i](#)

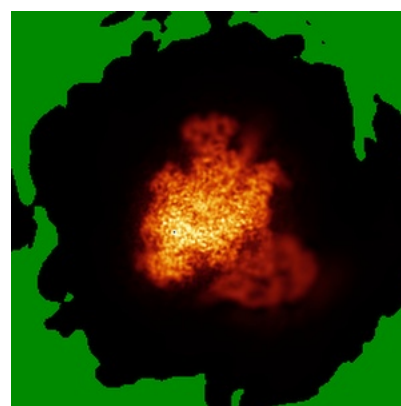
### 6.4.1 Primary map



X



Y

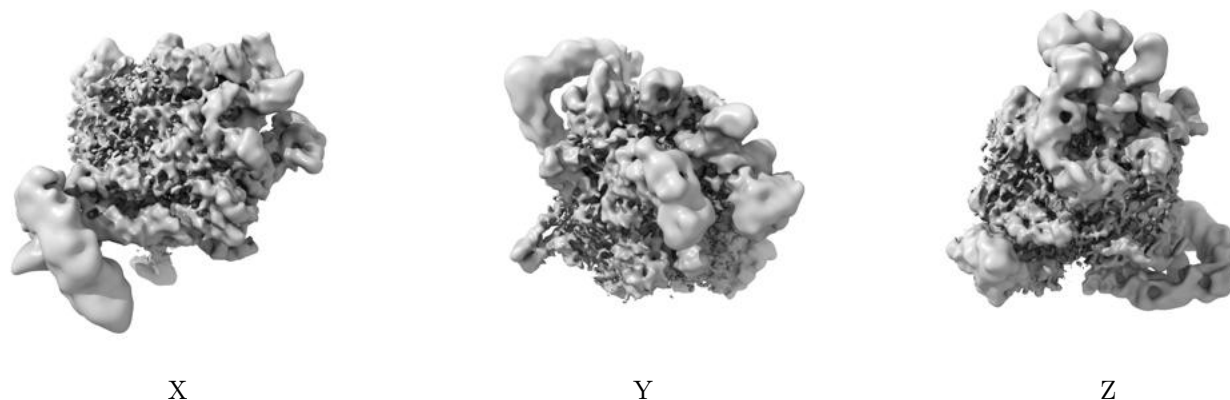


Z

The images above show the map standard deviation projections with false color in three orthogonal directions. Minimum values are shown in green, max in blue, and dark to light orange shades represent small to large values respectively.

## 6.5 Orthogonal surface views [i](#)

### 6.5.1 Primary map



The images above show the 3D surface view of the map at the recommended contour level 0.02. These images, in conjunction with the slice images, may facilitate assessment of whether an appropriate contour level has been provided.

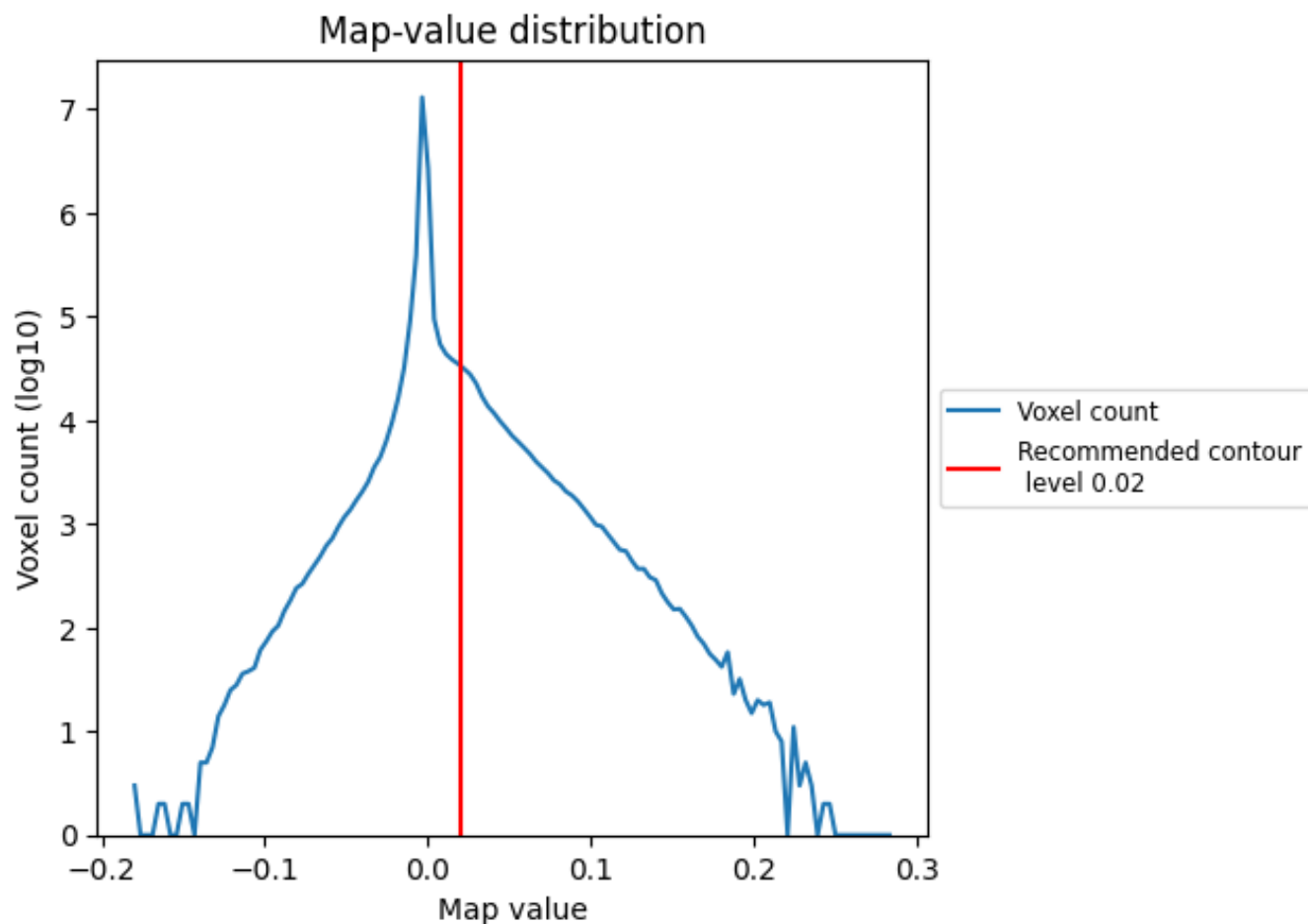
## 6.6 Mask visualisation [i](#)

This section was not generated. No masks/segmentation were deposited.

## 7 Map analysis [i](#)

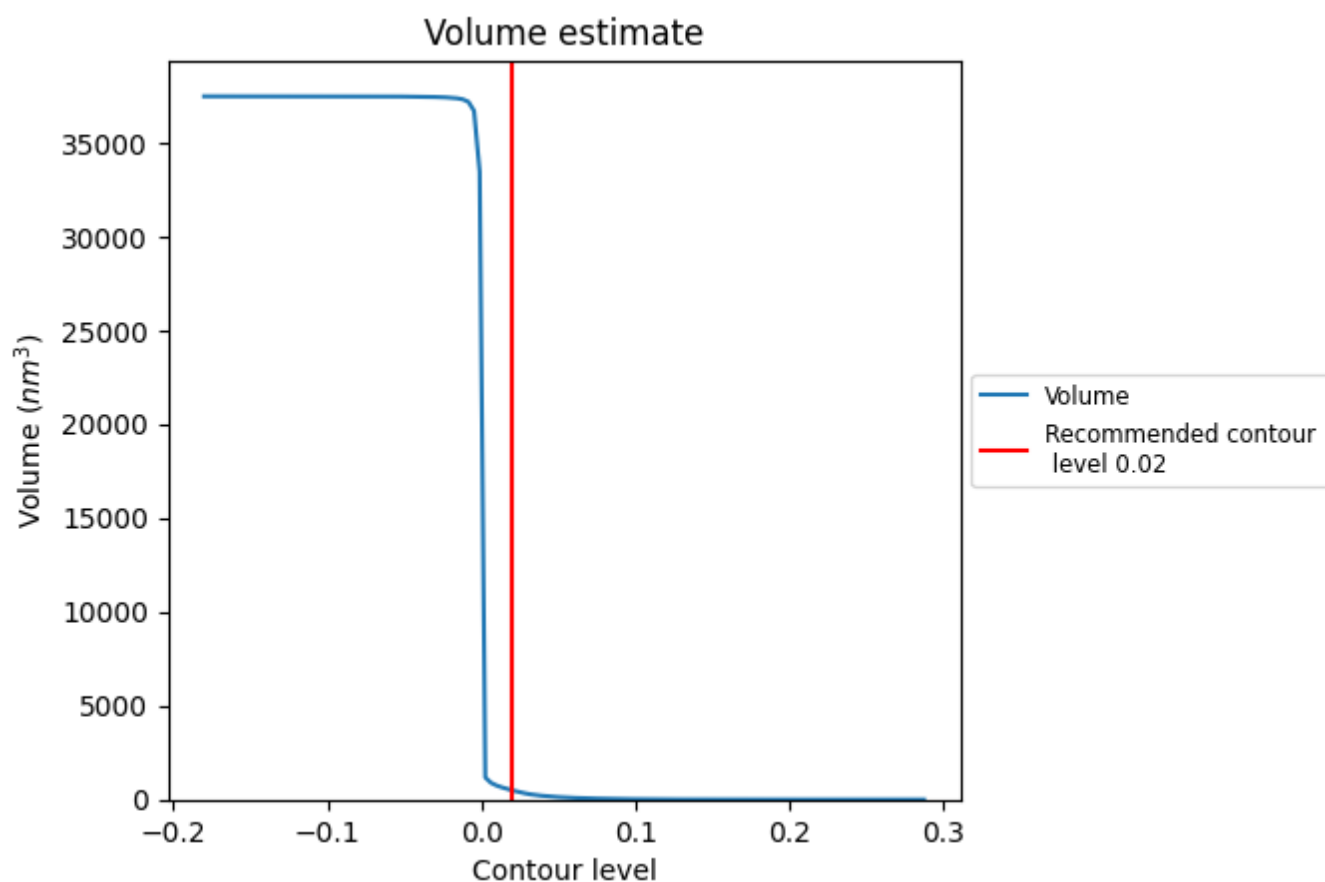
This section contains the results of statistical analysis of the map.

### 7.1 Map-value distribution [i](#)



The map-value distribution is plotted in 128 intervals along the x-axis. The y-axis is logarithmic. A spike in this graph at zero usually indicates that the volume has been masked.

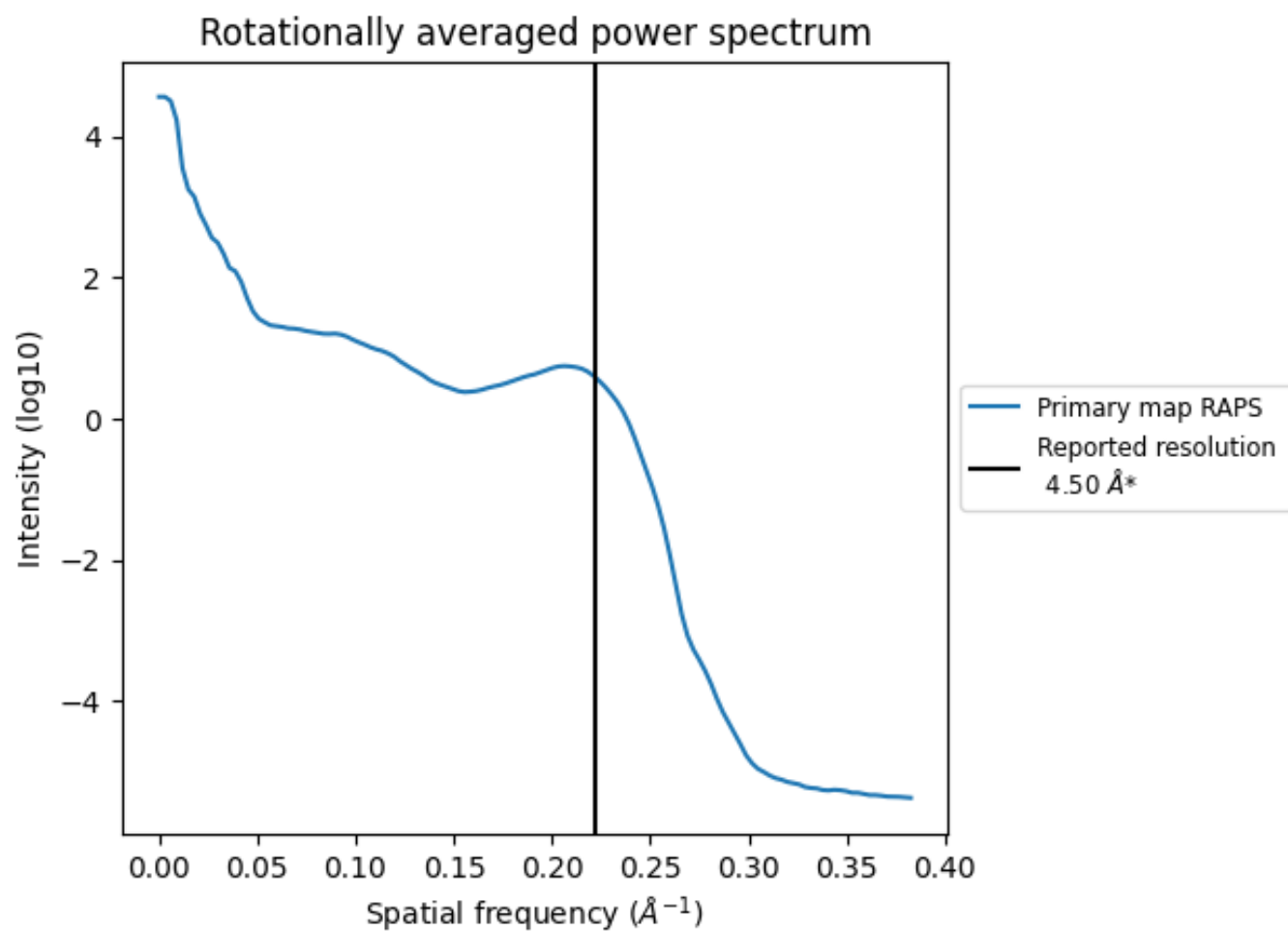
## 7.2 Volume estimate [i](#)



The volume at the recommended contour level is 491 nm<sup>3</sup>; this corresponds to an approximate mass of 443 kDa.

The volume estimate graph shows how the enclosed volume varies with the contour level. The recommended contour level is shown as a vertical line and the intersection between the line and the curve gives the volume of the enclosed surface at the given level.

### 7.3 Rotationally averaged power spectrum ⓘ



\*Reported resolution corresponds to spatial frequency of 0.222 Å<sup>-1</sup>



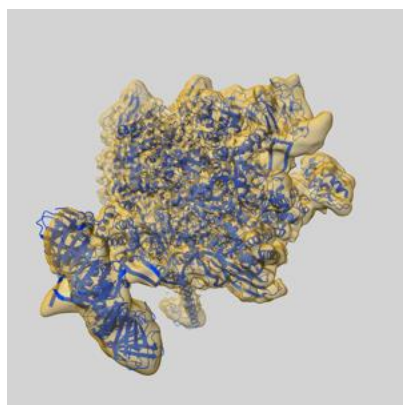
## 8 Fourier-Shell correlation

This section was not generated. No FSC curve or half-maps provided.

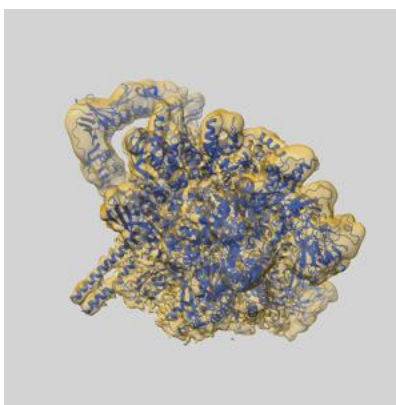
## 9 Map-model fit [i](#)

This section contains information regarding the fit between EMDB map EMD-30605 and PDB model 7D7D. Per-residue inclusion information can be found in section [3](#) on page [8](#).

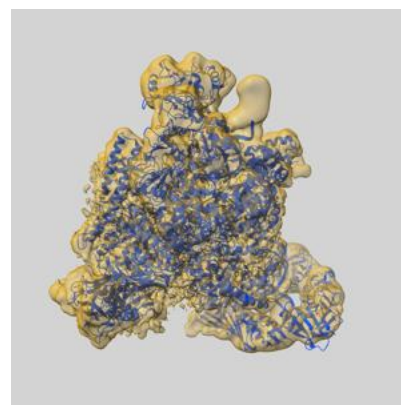
### 9.1 Map-model overlay [i](#)



X



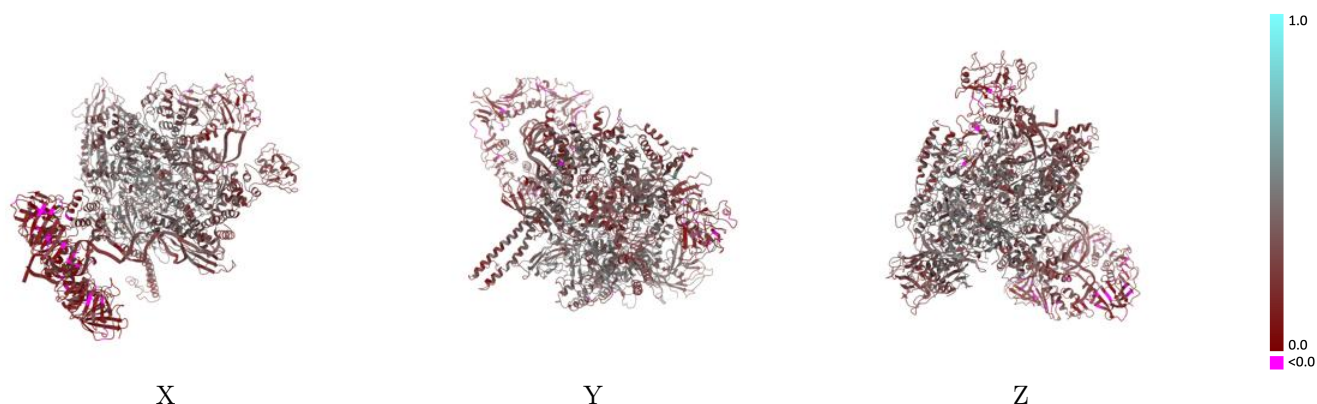
Y



Z

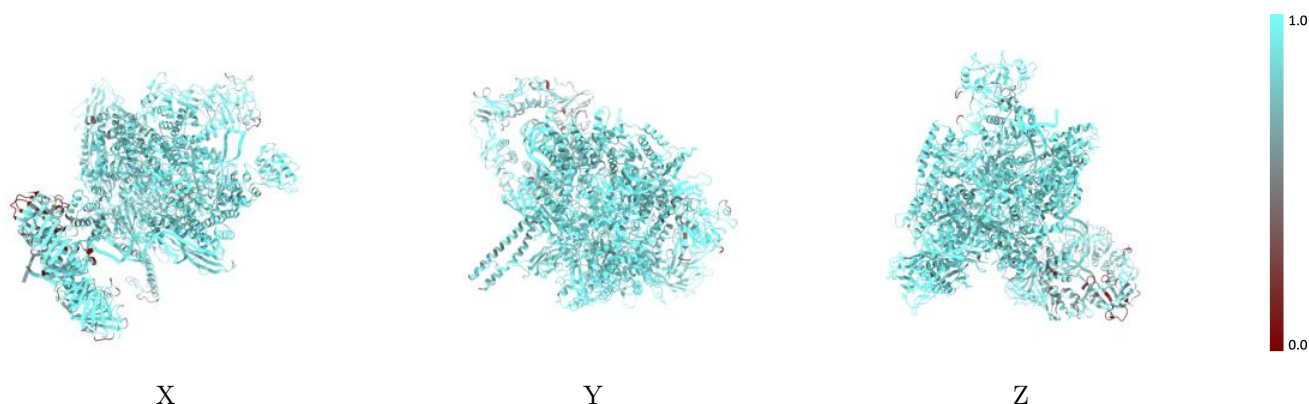
The images above show the 3D surface view of the map at the recommended contour level 0.02 at 50% transparency in yellow overlaid with a ribbon representation of the model coloured in blue. These images allow for the visual assessment of the quality of fit between the atomic model and the map.

## 9.2 Q-score mapped to coordinate model [i](#)



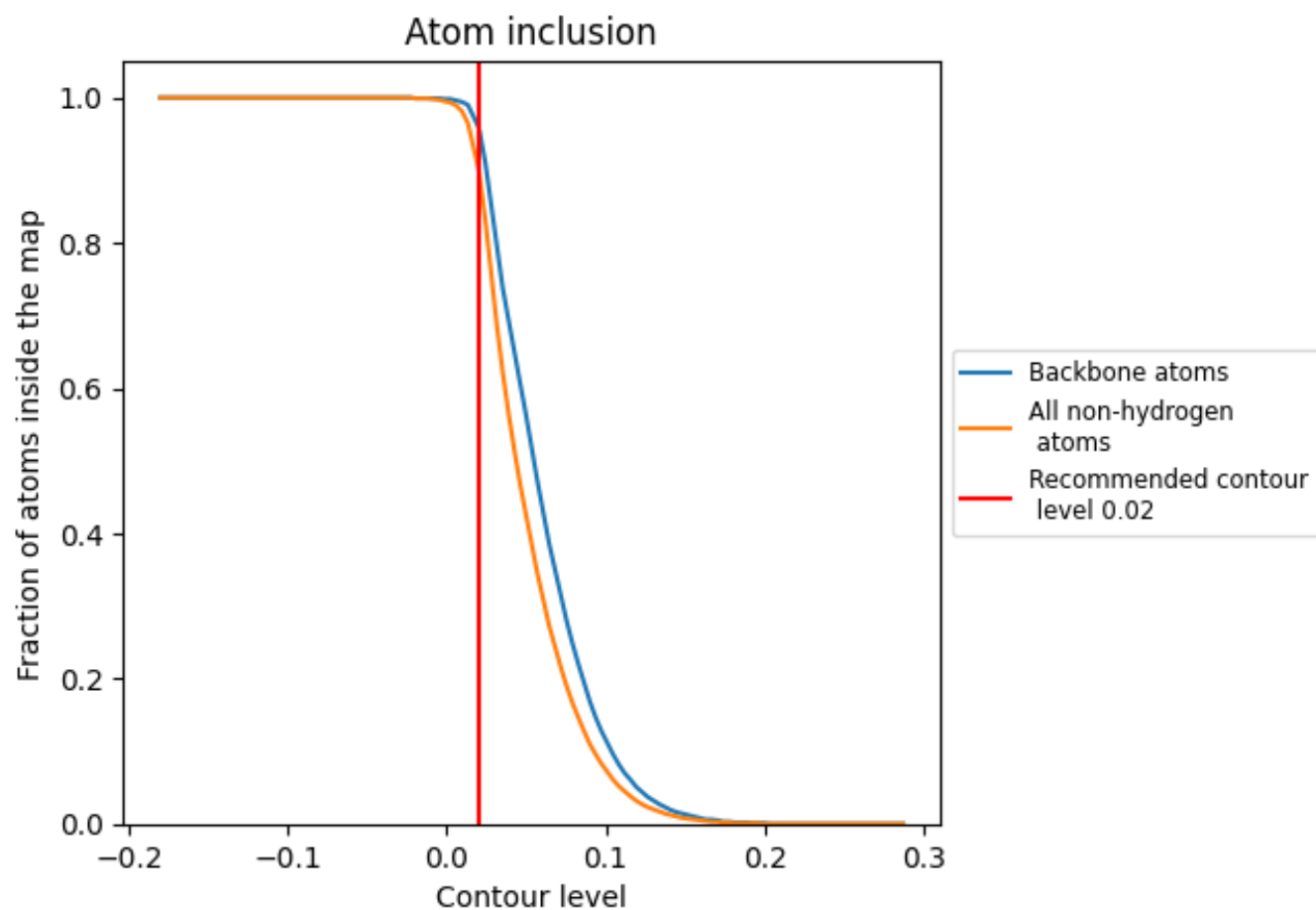
The images above show the model with each residue coloured according to its Q-score. This shows their resolvability in the map with higher Q-score values reflecting better resolvability. Please note: Q-score is calculating the resolvability of atoms, and thus high values are only expected at resolutions at which atoms can be resolved. Low Q-score values may therefore be expected for many entries.

## 9.3 Atom inclusion mapped to coordinate model [i](#)



The images above show the model with each residue coloured according to its atom inclusion. This shows to what extent they are inside the map at the recommended contour level (0.02).

## 9.4 Atom inclusion [i](#)



At the recommended contour level, 96% of all backbone atoms, 90% of all non-hydrogen atoms, are inside the map.

9.5 Map-model fit summary ⓘ

The table lists the average atom inclusion at the recommended contour level (0.02) and Q-score for the entire model and for each chain.

Chain	Atom inclusion	Q-score
All	<div></div> 0.9030	<div></div> 0.3160
A	<div></div> 0.9500	<div></div> 0.3770
B	<div></div> 0.9490	<div></div> 0.3360
C	<div></div> 0.9260	<div></div> 0.3610
D	<div></div> 0.9290	<div></div> 0.3470
E	<div></div> 0.7480	<div></div> 0.3240
F	<div></div> 0.9230	<div></div> 0.3320
G	<div></div> 0.8200	<div></div> 0.1850
H	<div></div> 0.8540	<div></div> 0.1440
I	<div></div> 0.6880	<div></div> 0.1290
K	<div></div> 0.8090	<div></div> 0.2660
N	<div></div> 0.9210	<div></div> 0.2720
T	<div></div> 0.9470	<div></div> 0.2870

1.0

0.0

<0.0