



Full wwPDB X-ray Structure Validation Report ⓘ

Mar 5, 2026 – 12:21 AM UTC

PDB ID : 8CMS / pdb_00008cms
Title : OTUB2 in covalent complex with LN5P45
Authors : Gan, J.; de Vries, J.
Deposited on : 2023-02-21
Resolution : 1.77 Å(reported)

This is a Full wwPDB X-ray Structure Validation Report for a publicly released PDB entry.

We welcome your comments at validation@mail.wwpdb.org

A user guide is available at

<https://www.wwpdb.org/validation/2017/XrayValidationReportHelp>

with specific help available everywhere you see the ⓘ symbol.

The types of validation reports are described at

<http://www.wwpdb.org/validation/2017/FAQs#types>.

The following versions of software and data (see [references ⓘ](#)) were used in the production of this report:

MolProbity : 4-5-2 with Phenix2.0
Mogul : 2022.3.0, CSD as543be (2022)
Xtriage (Phenix) : 2.0
EDS : 3.0
Buster-report : wwPDB partial adaption of 1.1.7 (2018)
Percentile statistics : 20250101.v01 (using entries in the PDB archive January 1st 2025)
CCP4 : 9.0.010 (Gargrove)
Density-Fitness : 1.0.12
Ideal geometry (proteins) : Engh & Huber (2001)
Ideal geometry (DNA, RNA) : Parkinson et al. (1996)
Validation Pipeline (wwPDB-VP) : 2.49

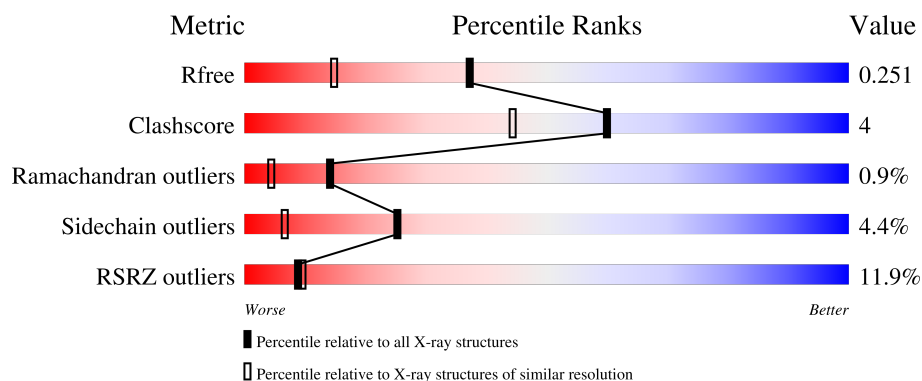
1 Overall quality at a glance

The following experimental techniques were used to determine the structure:

X-RAY DIFFRACTION

The reported resolution of this entry is 1.77 Å.

Percentile scores (ranging between 0-100) for global validation metrics of the entry are shown in the following graphic. The table shows the number of entries on which the scores are based.



Metric	Whole archive (#Entries)	Similar resolution (#Entries, resolution range(Å))
R_{free}	180053	1365 (1.78-1.78)
Clashscore	190562	1395 (1.78-1.78)
Ramachandran outliers	187476	1382 (1.78-1.78)
Sidechain outliers	187428	1382 (1.78-1.78)
RSRZ outliers	180081	1365 (1.78-1.78)

The table below summarises the geometric issues observed across the polymeric chains and their fit to the electron density. The red, orange, yellow and green segments of the lower bar indicate the fraction of residues that contain outliers for ≥ 3 , 2, 1 and 0 types of geometric quality criteria respectively. A grey segment represents the fraction of residues that are not modelled. The numeric value for each fraction is indicated below the corresponding segment, with a dot representing fractions $\leq 5\%$. The upper red bar (where present) indicates the fraction of residues that have poor fit to the electron density. The numeric value is given above the bar.

Mol	Chain	Length	Quality of chain
1	AAA	236	<div> <div>11%</div> <div>81%</div> <div>13%</div> <div>••</div> </div>

2 Entry composition [i](#)

There are 3 unique types of molecules in this entry. The entry contains 1943 atoms, of which 0 are hydrogens and 0 are deuteriums.

In the tables below, the ZeroOcc column contains the number of atoms modelled with zero occupancy, the AltConf column contains the number of residues with at least one atom in alternate conformation and the Trace column contains the number of residues modelled with at most 2 atoms.

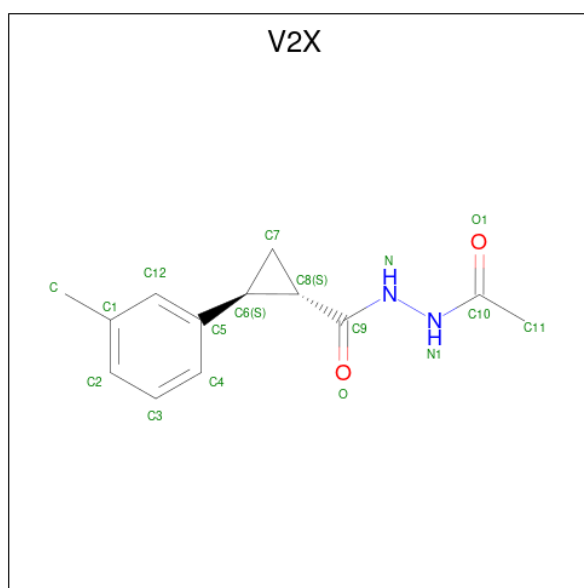
- Molecule 1 is a protein called Ubiquitin thioesterase OTUB2.

Mol	Chain	Residues	Atoms					ZeroOcc	AltConf	Trace
1	AAA	226	Total	C	N	O	S	0	1	0
			1862	1192	316	346	8			

There are 2 discrepancies between the modelled and reference sequences:

Chain	Residue	Modelled	Actual	Comment	Reference
AAA	-1	GLY	-	expression tag	UNP Q96DC9
AAA	0	PRO	-	expression tag	UNP Q96DC9

- Molecule 2 is (1 {S},2 {S})- {N}'-ethanoyl-2-(3-methylphenyl)cyclopropane-1-carbohydrazide (CCD ID: V2X) (formula: C₁₃H₁₆N₂O₂) (labeled as "Ligand of Interest" by depositor).



Mol	Chain	Residues	Atoms				ZeroOcc	AltConf
2	AAA	1	Total	C	N	O	0	0
			17	13	2	2		

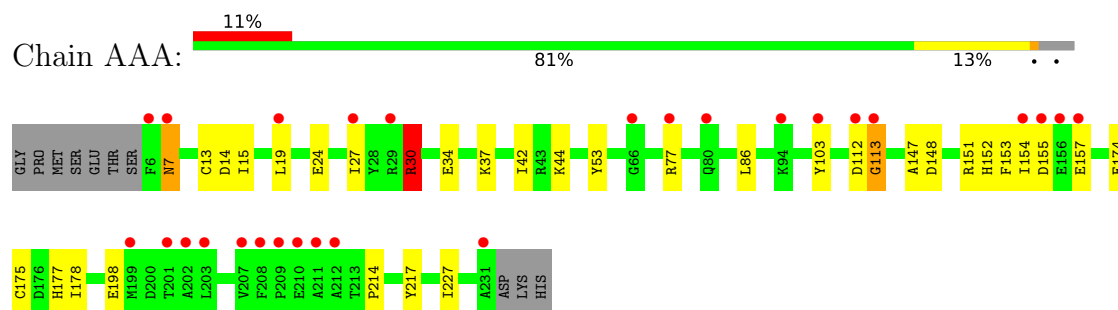
- Molecule 3 is water.

Mol	Chain	Residues	Atoms		ZeroOcc	AltConf
3	AAA	64	Total 64	O 64	0	0

3 Residue-property plots

These plots are drawn for all protein, RNA, DNA and oligosaccharide chains in the entry. The first graphic for a chain summarises the proportions of the various outlier classes displayed in the second graphic. The second graphic shows the sequence view annotated by issues in geometry and electron density. Residues are color-coded according to the number of geometric quality criteria for which they contain at least one outlier: green = 0, yellow = 1, orange = 2 and red = 3 or more. A red dot above a residue indicates a poor fit to the electron density ($RSRZ > 2$). Stretches of 2 or more consecutive residues without any outlier are shown as a green connector. Residues present in the sample, but not in the model, are shown in grey.

- Molecule 1: Ubiquitin thioesterase OTUB2



4 Data and refinement statistics

Property	Value	Source
Space group	P 1 21 1	Depositor
Cell constants a, b, c, α , β , γ	47.65Å 45.25Å 58.00Å 90.00° 96.05° 90.00°	Depositor
Resolution (Å)	47.43 – 1.77 47.43 – 1.77	Depositor EDS
% Data completeness (in resolution range)	99.6 (47.43-1.77) 99.6 (47.43-1.77)	Depositor EDS
R_{merge}	0.12	Depositor
R_{sym}	(Not available)	Depositor
$\langle I/\sigma(I) \rangle$ ¹	1.27 (at 1.77Å)	Xtriage
Refinement program	REFMAC 5.8.0258	Depositor
R, R_{free}	0.210 , 0.252 0.219 , 0.251	Depositor DCC
R_{free} test set	1229 reflections (5.08%)	wwPDB-VP
Wilson B-factor (Å ²)	24.0	Xtriage
Anisotropy	0.262	Xtriage
Bulk solvent k_{sol} (e/Å ³), B_{sol} (Å ²)	0.36 , 25.9	EDS
L-test for twinning ²	$\langle L \rangle = 0.49$, $\langle L^2 \rangle = 0.33$	Xtriage
Estimated twinning fraction	No twinning to report.	Xtriage
F_o, F_c correlation	0.95	EDS
Total number of atoms	1943	wwPDB-VP
Average B, all atoms (Å ²)	27.0	wwPDB-VP

Xtriage's analysis on translational NCS is as follows: *The largest off-origin peak in the Patterson function is 9.40% of the height of the origin peak. No significant pseudotranslation is detected.*

¹Intensities estimated from amplitudes.

²Theoretical values of $\langle |L| \rangle$, $\langle L^2 \rangle$ for acentric reflections are 0.5, 0.333 respectively for untwinned datasets, and 0.375, 0.2 for perfectly twinned datasets.

5 Model quality

5.1 Standard geometry

Bond lengths and bond angles in the following residue types are not validated in this section: V2X

The Z score for a bond length (or angle) is the number of standard deviations the observed value is removed from the expected value. A bond length (or angle) with $|Z| > 5$ is considered an outlier worth inspection. RMSZ is the root-mean-square of all Z scores of the bond lengths (or angles).

Mol	Chain	Bond lengths		Bond angles	
		RMSZ	$\# Z > 5$	RMSZ	$\# Z > 5$
1	AAA	1.03	0/1903	1.37	4/2567 (0.2%)

Chiral center outliers are detected by calculating the chiral volume of a chiral center and verifying if the center is modelled as a planar moiety or with the opposite hand. A planarity outlier is detected by checking planarity of atoms in a peptide group, atoms in a mainchain group or atoms of a sidechain that are expected to be planar.

Mol	Chain	#Chirality outliers	#Planarity outliers
1	AAA	0	1

There are no bond length outliers.

All (4) bond angle outliers are listed below:

Mol	Chain	Res	Type	Atoms	Z	Observed($^{\circ}$)	Ideal($^{\circ}$)
1	AAA	30	ARG	CG-CD-NE	-5.58	99.72	112.00
1	AAA	14	ASP	CB-CA-C	5.23	118.98	109.62
1	AAA	77	ARG	N-CA-C	-5.17	105.65	111.28
1	AAA	77	ARG	CB-CG-CD	5.12	123.07	111.30

There are no chirality outliers.

All (1) planarity outliers are listed below:

Mol	Chain	Res	Type	Group
1	AAA	154	ILE	Peptide

5.2 Too-close contacts

In the following table, the Non-H and H(model) columns list the number of non-hydrogen atoms and hydrogen atoms in the chain respectively. The H(added) column lists the number of hydrogen

atoms added and optimized by MolProbity. The Clashes column lists the number of clashes within the asymmetric unit, whereas Symm-Clashes lists symmetry-related clashes.

Mol	Chain	Non-H	H(model)	H(added)	Clashes	Symm-Clashes
1	AAA	1862	0	1823	16	1
2	AAA	17	0	0	1	0
3	AAA	64	0	0	1	0
All	All	1943	0	1823	16	1

The all-atom clashscore is defined as the number of clashes found per 1000 atoms (including hydrogen atoms). The all-atom clashscore for this structure is 4.

All (16) close contacts within the same asymmetric unit are listed below, sorted by their clash magnitude.

Atom-1	Atom-2	Interatomic distance (Å)	Clash overlap (Å)
1:AAA:13:CYS:SG	1:AAA:44:LYS:NZ	2.63	0.70
1:AAA:30:ARG:NH1	1:AAA:198:GLU:OE2	2.25	0.68
1:AAA:112:ASP:O	1:AAA:113:GLY:O	2.13	0.67
1:AAA:174:GLU:OE2	2:AAA:301:V2X:N	2.36	0.58
1:AAA:7:ASN:HD22	1:AAA:7:ASN:H	1.52	0.57
1:AAA:214:PRO:HG2	1:AAA:217:TYR:CZ	2.41	0.56
1:AAA:147:ALA:O	1:AAA:151:ARG:HB2	2.10	0.51
1:AAA:177:HIS:NE2	1:AAA:178:ILE:HD13	2.25	0.51
1:AAA:30:ARG:NH2	1:AAA:34:GLU:OE1	2.43	0.50
1:AAA:177:HIS:HD2	3:AAA:442:HOH:O	1.97	0.48
1:AAA:177:HIS:CD2	1:AAA:178:ILE:HD13	2.51	0.46
1:AAA:53:TYR:CE2	1:AAA:175[A]:CYS:SG	3.11	0.44
1:AAA:42:ILE:HA	1:AAA:227:ILE:O	2.18	0.44
1:AAA:177:HIS:NE2	1:AAA:178:ILE:CD1	2.80	0.43
1:AAA:24:GLU:CD	1:AAA:24:GLU:H	2.27	0.43
1:AAA:153:PHE:HB3	1:AAA:178:ILE:HD11	2.01	0.41

All (1) symmetry-related close contacts are listed below. The label for Atom-2 includes the symmetry operator and encoded unit-cell translations to be applied.

Atom-1	Atom-2	Interatomic distance (Å)	Clash overlap (Å)
1:AAA:103:TYR:OH	1:AAA:152:HIS:NE2[2_546]	1.98	0.22

5.3 Torsion angles [i](#)

5.3.1 Protein backbone [i](#)

In the following table, the Percentiles column shows the percent Ramachandran outliers of the chain as a percentile score with respect to all X-ray entries followed by that with respect to entries of similar resolution.

The Analysed column shows the number of residues for which the backbone conformation was analysed, and the total number of residues.

Mol	Chain	Analysed	Favoured	Allowed	Outliers	Percentiles
1	AAA	225/236 (95%)	216 (96%)	7 (3%)	2 (1%)	14 4

All (2) Ramachandran outliers are listed below:

Mol	Chain	Res	Type
1	AAA	113	GLY
1	AAA	155	ASP

5.3.2 Protein sidechains [i](#)

In the following table, the Percentiles column shows the percent sidechain outliers of the chain as a percentile score with respect to all X-ray entries followed by that with respect to entries of similar resolution.

The Analysed column shows the number of residues for which the sidechain conformation was analysed, and the total number of residues.

Mol	Chain	Analysed	Rotameric	Outliers	Percentiles
1	AAA	204/212 (96%)	195 (96%)	9 (4%)	25 7

All (9) residues with a non-rotameric sidechain are listed below:

Mol	Chain	Res	Type
1	AAA	7	ASN
1	AAA	15	ILE
1	AAA	19	LEU
1	AAA	27	ILE
1	AAA	30	ARG
1	AAA	37	LYS
1	AAA	86	LEU
1	AAA	148	ASP
1	AAA	157	GLU

Sometimes sidechains can be flipped to improve hydrogen bonding and reduce clashes. There are no such sidechains identified.

5.3.3 RNA [i](#)

There are no RNA molecules in this entry.

5.4 Non-standard residues in protein, DNA, RNA chains [i](#)

There are no non-standard protein/DNA/RNA residues in this entry.

5.5 Carbohydrates [i](#)

There are no oligosaccharides in this entry.

5.6 Ligand geometry [i](#)

1 ligand is modelled in this entry.

In the following table, the Counts columns list the number of bonds (or angles) for which Mogul statistics could be retrieved, the number of bonds (or angles) that are observed in the model and the number of bonds (or angles) that are defined in the Chemical Component Dictionary. The Link column lists molecule types, if any, to which the group is linked. The Z score for a bond length (or angle) is the number of standard deviations the observed value is removed from the expected value. A bond length (or angle) with $|Z| > 2$ is considered an outlier worth inspection. RMSZ is the root-mean-square of all Z scores of the bond lengths (or angles).

Mol	Type	Chain	Res	Link	Bond lengths			Bond angles		
					Counts	RMSZ	# Z > 2	Counts	RMSZ	# Z > 2
2	V2X	AAA	301	1	18,18,18	0.60	0	25,25,25	1.72	6 (24%)

In the following table, the Chirals column lists the number of chiral outliers, the number of chiral centers analysed, the number of these observed in the model and the number defined in the Chemical Component Dictionary. Similar counts are reported in the Torsion and Rings columns. '-' means no outliers of that kind were identified.

Mol	Type	Chain	Res	Link	Chirals	Torsions	Rings
2	V2X	AAA	301	1	-	5/13/18/18	0/2/2/2

There are no bond length outliers.

All (6) bond angle outliers are listed below:

Mol	Chain	Res	Type	Atoms	Z	Observed(°)	Ideal(°)
2	AAA	301	V2X	C8-C9-N	-5.12	106.90	114.92
2	AAA	301	V2X	C7-C8-C9	-3.15	112.36	117.83
2	AAA	301	V2X	O-C9-C8	3.09	125.37	121.67
2	AAA	301	V2X	O-C9-N	2.90	127.37	123.07
2	AAA	301	V2X	C11-C10-N1	-2.57	112.55	114.88
2	AAA	301	V2X	C6-C8-C9	2.21	122.25	116.81

There are no chirality outliers.

All (5) torsion outliers are listed below:

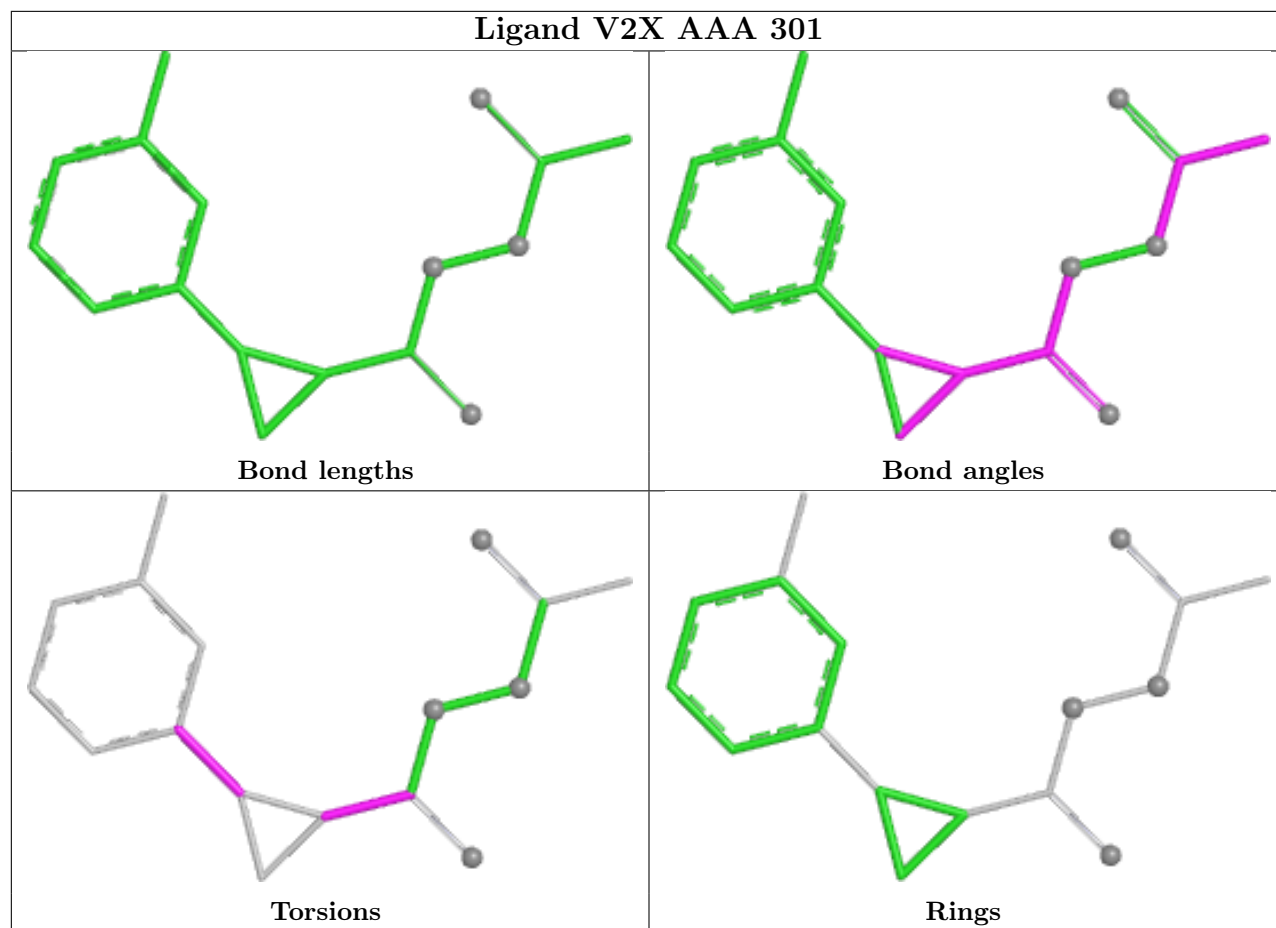
Mol	Chain	Res	Type	Atoms
2	AAA	301	V2X	C7-C8-C9-N
2	AAA	301	V2X	C7-C8-C9-O
2	AAA	301	V2X	C6-C8-C9-O
2	AAA	301	V2X	C4-C5-C6-C7
2	AAA	301	V2X	C6-C8-C9-N

There are no ring outliers.

1 monomer is involved in 1 short contact:

Mol	Chain	Res	Type	Clashes	Symm-Clashes
2	AAA	301	V2X	1	0

The following is a two-dimensional graphical depiction of Mogul quality analysis of bond lengths, bond angles, torsion angles, and ring geometry for all instances of the Ligand of Interest. In addition, ligands with molecular weight > 250 and outliers as shown on the validation Tables will also be included. For torsion angles, if less than 5% of the Mogul distribution of torsion angles is within 10 degrees of the torsion angle in question, then that torsion angle is considered an outlier. Any bond that is central to one or more torsion angles identified as an outlier by Mogul will be highlighted in the graph. For rings, the root-mean-square deviation (RMSD) between the ring in question and similar rings identified by Mogul is calculated over all ring torsion angles. If the average RMSD is greater than 60 degrees and the minimal RMSD between the ring in question and any Mogul-identified rings is also greater than 60 degrees, then that ring is considered an outlier. The outliers are highlighted in purple. The color gray indicates Mogul did not find sufficient equivalents in the CSD to analyse the geometry.



5.7 Other polymers [i](#)

There are no such residues in this entry.

5.8 Polymer linkage issues [i](#)

There are no chain breaks in this entry.

6 Fit of model and data

6.1 Protein, DNA and RNA chains

In the following table, the column labelled ‘#RSRZ> 2’ contains the number (and percentage) of RSRZ outliers, followed by percent RSRZ outliers for the chain as percentile scores relative to all X-ray entries and entries of similar resolution. The OWAB column contains the minimum, median, 95th percentile and maximum values of the occupancy-weighted average B-factor per residue. The column labelled ‘Q< 0.9’ lists the number of (and percentage) of residues with an average occupancy less than 0.9.

Mol	Chain	Analysed	<RSRZ>	#RSRZ>2	OWAB(Å ²)	Q<0.9
1	AAA	226/236 (95%)	0.57	27 (11%) 9 9	12, 24, 45, 64	1 (0%)

All (27) RSRZ outliers are listed below:

Mol	Chain	Res	Type	RSRZ
1	AAA	231	ALA	4.1
1	AAA	203	LEU	4.0
1	AAA	27	ILE	3.8
1	AAA	209	PRO	3.4
1	AAA	208	PHE	3.3
1	AAA	207	VAL	3.3
1	AAA	211	ALA	3.1
1	AAA	112	ASP	3.0
1	AAA	155	ASP	2.9
1	AAA	154	ILE	2.8
1	AAA	202	ALA	2.8
1	AAA	212	ALA	2.8
1	AAA	113	GLY	2.7
1	AAA	201	THR	2.7
1	AAA	210	GLU	2.6
1	AAA	6	PHE	2.6
1	AAA	103	TYR	2.5
1	AAA	157	GLU	2.4
1	AAA	156	GLU	2.3
1	AAA	29	ARG	2.3
1	AAA	94	LYS	2.2
1	AAA	199	MET	2.1
1	AAA	7	ASN	2.0
1	AAA	77	ARG	2.0
1	AAA	19	LEU	2.0
1	AAA	66	GLY	2.0
1	AAA	80	GLN	2.0

6.2 Non-standard residues in protein, DNA, RNA chains [i](#)

There are no non-standard protein/DNA/RNA residues in this entry.

6.3 Carbohydrates [i](#)

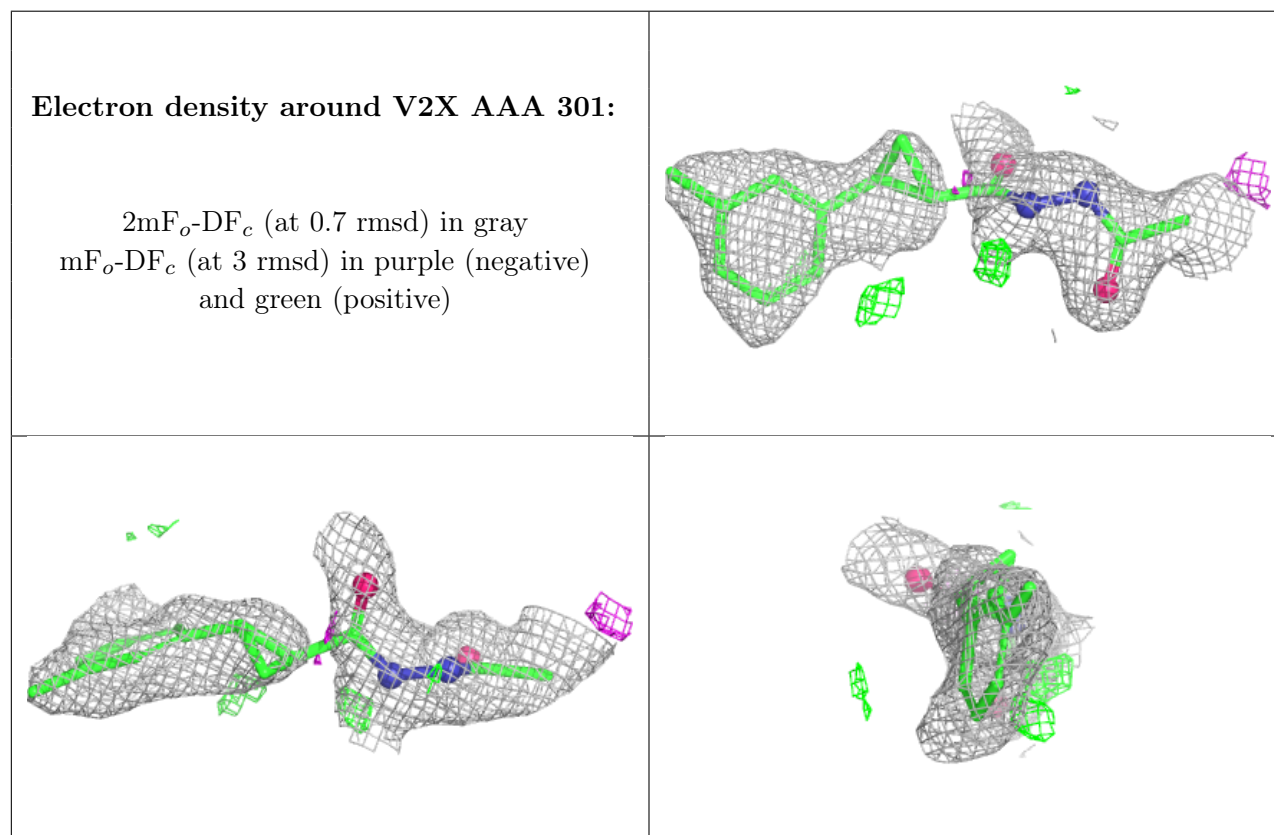
There are no oligosaccharides in this entry.

6.4 Ligands [i](#)

In the following table, the Atoms column lists the number of modelled atoms in the group and the number defined in the chemical component dictionary. The B-factors column lists the minimum, median, 95th percentile and maximum values of B factors of atoms in the group. The column labelled 'Q< 0.9' lists the number of atoms with occupancy less than 0.9.

Mol	Type	Chain	Res	Atoms	RSCC	RSR	B-factors(\AA^2)	Q<0.9
2	V2X	AAA	301	17/17	0.87	0.15	28,50,56,58	0

The following is a graphical depiction of the model fit to experimental electron density of all instances of the Ligand of Interest. In addition, ligands with molecular weight > 250 and outliers as shown on the geometry validation Tables will also be included. Each fit is shown from different orientation to approximate a three-dimensional view.



6.5 Other polymers [i](#)

There are no such residues in this entry.