



wwPDB X-ray Structure Validation Summary Report ⓘ

Mar 8, 2026 – 04:25 PM UTC

PDB ID : 7AKE / pdb_00007ake
Title : Structure of DYRK1A in complex with compound 58
Authors : Dokurno, P.; Surgenor, A.E.; Kotschy, A.
Deposited on : 2020-09-30
Resolution : 2.30 Å(reported)

This is a wwPDB X-ray Structure Validation Summary Report for a publicly released PDB entry.

We welcome your comments at validation@mail.wwpdb.org

A user guide is available at

<https://www.wwpdb.org/validation/2017/XrayValidationReportHelp>

with specific help available everywhere you see the ⓘ symbol.

The types of validation reports are described at

<http://www.wwpdb.org/validation/2017/FAQs#types>.

The following versions of software and data (see [references ⓘ](#)) were used in the production of this report:

MolProbity : 4-5-2 with Phenix2.0
Mogul : 2022.3.0, CSD as543be (2022)
Xtriage (Phenix) : 2.0
EDS : 3.0
Buster-report : wwPDB partial adaption of 1.1.7 (2018)
Percentile statistics : 20250101.v01 (using entries in the PDB archive January 1st 2025)
CCP4 : 9.0.010 (Gargrove)
Density-Fitness : 1.0.12
Ideal geometry (proteins) : Engh & Huber (2001)
Ideal geometry (DNA, RNA) : Parkinson et al. (1996)
Validation Pipeline (wwPDB-VP) : 2.49

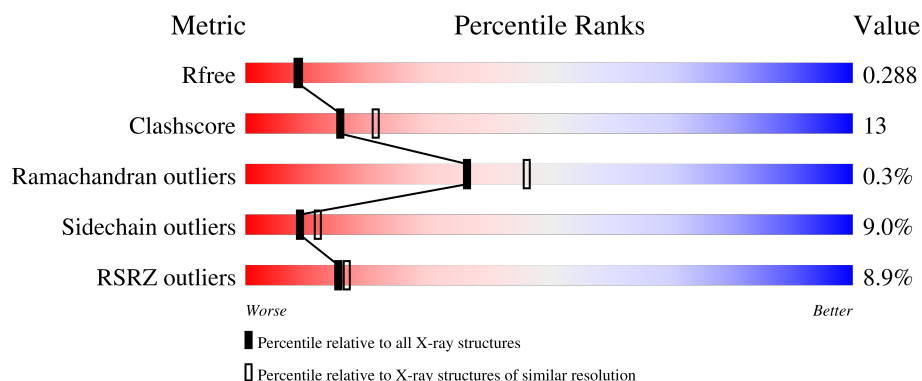
1 Overall quality at a glance

The following experimental techniques were used to determine the structure:

X-RAY DIFFRACTION

The reported resolution of this entry is 2.30 Å.

Percentile scores (ranging between 0-100) for global validation metrics of the entry are shown in the following graphic. The table shows the number of entries on which the scores are based.



Metric	Whole archive (#Entries)	Similar resolution (#Entries, resolution range(Å))
R_{free}	180053	6319 (2.30-2.30)
Clashscore	190562	6919 (2.30-2.30)
Ramachandran outliers	187476	6854 (2.30-2.30)
Sidechain outliers	187428	6854 (2.30-2.30)
RSRZ outliers	180081	6325 (2.30-2.30)

The table below summarises the geometric issues observed across the polymeric chains and their fit to the electron density. The red, orange, yellow and green segments of the lower bar indicate the fraction of residues that contain outliers for ≥ 3 , 2, 1 and 0 types of geometric quality criteria respectively. A grey segment represents the fraction of residues that are not modelled. The numeric value for each fraction is indicated below the corresponding segment, with a dot representing fractions $\leq 5\%$. The upper red bar (where present) indicates the fraction of residues that have poor fit to the electron density. The numeric value is given above the bar.

Mol	Chain	Length	Quality of chain
1	A	359	<div> <div>7%</div> <div>69%</div> <div>21%</div> <div>•</div> <div>7%</div> </div>
1	B	359	<div> <div>10%</div> <div>64%</div> <div>25%</div> <div>•</div> <div>7%</div> </div>

2 Entry composition

There are 4 unique types of molecules in this entry. The entry contains 5722 atoms, of which 0 are hydrogens and 0 are deuteriums.

In the tables below, the ZeroOcc column contains the number of atoms modelled with zero occupancy, the AltConf column contains the number of residues with at least one atom in alternate conformation and the Trace column contains the number of residues modelled with at most 2 atoms.

- Molecule 1 is a protein called Dual specificity tyrosine-phosphorylation-regulated kinase 1A.

Mol	Chain	Residues	Atoms						ZeroOcc	AltConf	Trace
1	A	333	Total	C	N	O	P	S	0	0	0
			2702	1740	467	475	2	18			
1	B	335	Total	C	N	O	P	S	0	0	0
			2716	1746	468	482	2	18			

There are 42 discrepancies between the modelled and reference sequences:

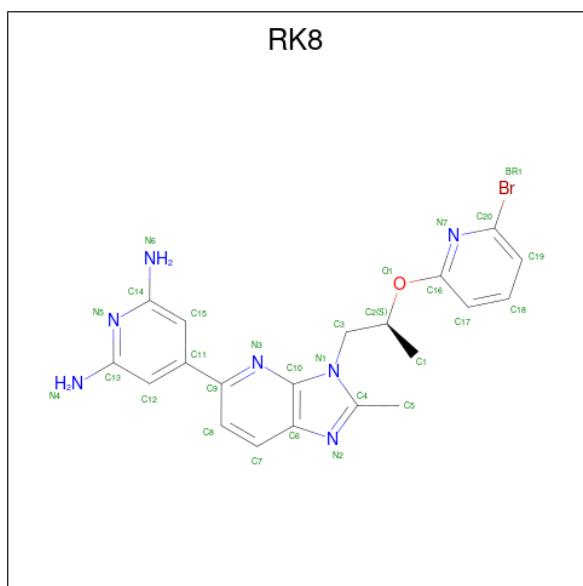
Chain	Residue	Modelled	Actual	Comment	Reference
A	127	MET	-	initiating methionine	UNP Q13627
A	128	GLY	-	expression tag	UNP Q13627
A	129	SER	-	expression tag	UNP Q13627
A	130	SER	-	expression tag	UNP Q13627
A	131	HIS	-	expression tag	UNP Q13627
A	132	HIS	-	expression tag	UNP Q13627
A	133	HIS	-	expression tag	UNP Q13627
A	134	HIS	-	expression tag	UNP Q13627
A	135	HIS	-	expression tag	UNP Q13627
A	136	HIS	-	expression tag	UNP Q13627
A	137	SER	-	expression tag	UNP Q13627
A	138	SER	-	expression tag	UNP Q13627
A	139	GLY	-	expression tag	UNP Q13627
A	140	LEU	-	expression tag	UNP Q13627
A	141	VAL	-	expression tag	UNP Q13627
A	142	PRO	-	expression tag	UNP Q13627
A	143	ARG	-	expression tag	UNP Q13627
A	144	GLY	-	expression tag	UNP Q13627
A	145	SEP	-	expression tag	UNP Q13627
A	146	HIS	-	expression tag	UNP Q13627
A	147	MET	-	expression tag	UNP Q13627
B	127	MET	-	initiating methionine	UNP Q13627
B	128	GLY	-	expression tag	UNP Q13627
B	129	SER	-	expression tag	UNP Q13627
B	130	SER	-	expression tag	UNP Q13627

Continued on next page...

Continued from previous page...

Chain	Residue	Modelled	Actual	Comment	Reference
B	131	HIS	-	expression tag	UNP Q13627
B	132	HIS	-	expression tag	UNP Q13627
B	133	HIS	-	expression tag	UNP Q13627
B	134	HIS	-	expression tag	UNP Q13627
B	135	HIS	-	expression tag	UNP Q13627
B	136	HIS	-	expression tag	UNP Q13627
B	137	SER	-	expression tag	UNP Q13627
B	138	SER	-	expression tag	UNP Q13627
B	139	GLY	-	expression tag	UNP Q13627
B	140	LEU	-	expression tag	UNP Q13627
B	141	VAL	-	expression tag	UNP Q13627
B	142	PRO	-	expression tag	UNP Q13627
B	143	ARG	-	expression tag	UNP Q13627
B	144	GLY	-	expression tag	UNP Q13627
B	145	SEP	-	expression tag	UNP Q13627
B	146	HIS	-	expression tag	UNP Q13627
B	147	MET	-	expression tag	UNP Q13627

- Molecule 2 is 4-[3-[(2 {S})-2-(6-bromanylpyridin-2-yl)oxypropyl]-2-methyl-imidazo[4,5-b]pyridin-5-yl]pyridine-2,6-diamine (CCD ID: RK8) (formula: C₂₀H₂₀BrN₇O) (labeled as "Ligand of Interest" by depositor).



Mol	Chain	Residues	Atoms					ZeroOcc	AltConf
2	A	1	Total	Br	C	N	O	0	0
			29	1	20	7	1		
2	B	1	Total	Br	C	N	O	0	0
			29	1	20	7	1		

- Molecule 3 is CHLORIDE ION (CCD ID: CL) (formula: Cl).

Mol	Chain	Residues	Atoms		ZeroOcc	AltConf
3	B	1	Total 1	Cl 1	0	0

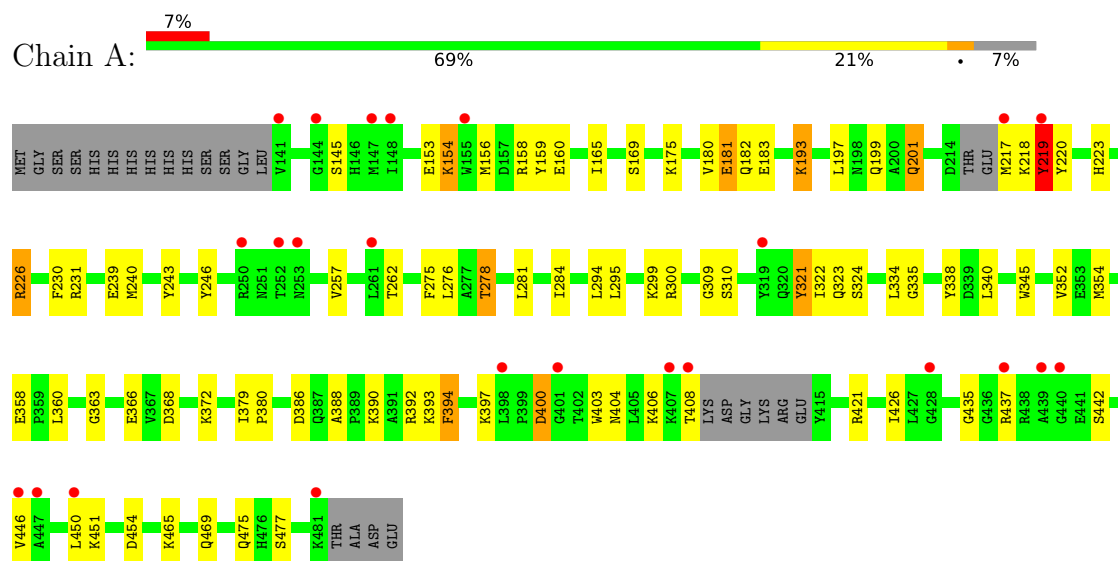
- Molecule 4 is water.

Mol	Chain	Residues	Atoms		ZeroOcc	AltConf
4	A	106	Total 106	O 106	0	0
4	B	139	Total 139	O 139	0	0

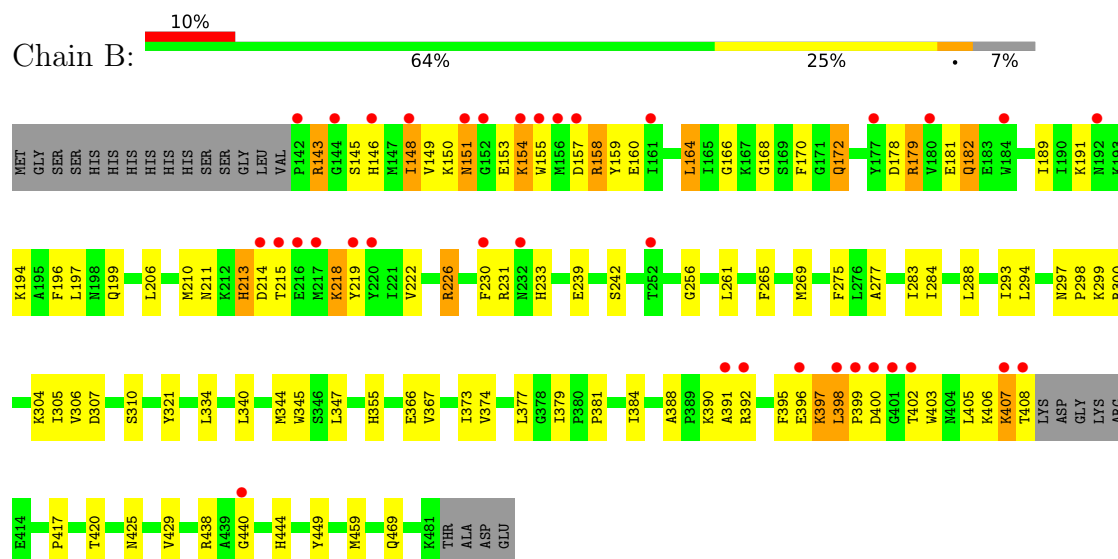
3 Residue-property plots [i](#)

These plots are drawn for all protein, RNA, DNA and oligosaccharide chains in the entry. The first graphic for a chain summarises the proportions of the various outlier classes displayed in the second graphic. The second graphic shows the sequence view annotated by issues in geometry and electron density. Residues are color-coded according to the number of geometric quality criteria for which they contain at least one outlier: green = 0, yellow = 1, orange = 2 and red = 3 or more. A red dot above a residue indicates a poor fit to the electron density ($RSRZ > 2$). Stretches of 2 or more consecutive residues without any outlier are shown as a green connector. Residues present in the sample, but not in the model, are shown in grey.

- Molecule 1: Dual specificity tyrosine-phosphorylation-regulated kinase 1A



- Molecule 1: Dual specificity tyrosine-phosphorylation-regulated kinase 1A



4 Data and refinement statistics

Property	Value	Source
Space group	P 1 21 1	Depositor
Cell constants a, b, c, α , β , γ	58.25Å 84.95Å 84.91Å 90.00° 107.66° 90.00°	Depositor
Resolution (Å)	25.00 – 2.30 25.00 – 2.30	Depositor EDS
% Data completeness (in resolution range)	96.6 (25.00-2.30) 96.6 (25.00-2.30)	Depositor EDS
R_{merge}	0.08	Depositor
R_{sym}	(Not available)	Depositor
$\langle I/\sigma(I) \rangle$ ¹	2.92 (at 2.31Å)	Xtriage
Refinement program	REFMAC 5.8.0258	Depositor
R, R_{free}	0.228 , 0.284 0.233 , 0.288	Depositor DCC
R_{free} test set	1714 reflections (5.05%)	wwPDB-VP
Wilson B-factor (Å ²)	33.2	Xtriage
Anisotropy	0.128	Xtriage
Bulk solvent k_{sol} (e/Å ³), B_{sol} (Å ²)	0.31 , 31.0	EDS
L-test for twinning ²	$\langle L \rangle = 0.48$, $\langle L^2 \rangle = 0.32$	Xtriage
Estimated twinning fraction	0.029 for h,-k,-h-l	Xtriage
F_o, F_c correlation	0.89	EDS
Total number of atoms	5722	wwPDB-VP
Average B, all atoms (Å ²)	37.0	wwPDB-VP

Xtriage's analysis on translational NCS is as follows: *The largest off-origin peak in the Patterson function is 4.48% of the height of the origin peak. No significant pseudotranslation is detected.*

¹Intensities estimated from amplitudes.

²Theoretical values of $\langle |L| \rangle$, $\langle L^2 \rangle$ for acentric reflections are 0.5, 0.333 respectively for untwinned datasets, and 0.375, 0.2 for perfectly twinned datasets.

5 Model quality [i](#)

5.1 Standard geometry [i](#)

Bond lengths and bond angles in the following residue types are not validated in this section: CL, PTR, SEP, RK8

The Z score for a bond length (or angle) is the number of standard deviations the observed value is removed from the expected value. A bond length (or angle) with $|Z| > 5$ is considered an outlier worth inspection. RMSZ is the root-mean-square of all Z scores of the bond lengths (or angles).

Mol	Chain	Bond lengths		Bond angles	
		RMSZ	$\# Z > 5$	RMSZ	$\# Z > 5$
1	A	0.97	0/2736	1.40	7/3685 (0.2%)
1	B	0.96	0/2751	1.41	10/3707 (0.3%)
All	All	0.97	0/5487	1.40	17/7392 (0.2%)

Chiral center outliers are detected by calculating the chiral volume of a chiral center and verifying if the center is modelled as a planar moiety or with the opposite hand. A planarity outlier is detected by checking planarity of atoms in a peptide group, atoms in a mainchain group or atoms of a sidechain that are expected to be planar.

Mol	Chain	#Chirality outliers	#Planarity outliers
1	A	0	1

There are no bond length outliers.

The worst 5 of 17 bond angle outliers are listed below:

Mol	Chain	Res	Type	Atoms	Z	Observed(°)	Ideal(°)
1	A	379	ILE	CA-C-N	7.77	125.33	119.66
1	A	379	ILE	C-N-CA	7.77	125.33	119.66
1	B	379	ILE	CA-C-N	6.97	124.75	119.66
1	B	379	ILE	C-N-CA	6.97	124.75	119.66
1	A	219	TYR	CB-CA-C	6.32	121.31	111.70

There are no chirality outliers.

All (1) planarity outliers are listed below:

Mol	Chain	Res	Type	Group
1	A	219	TYR	Peptide

5.2 Too-close contacts ⓘ

In the following table, the Non-H and H(model) columns list the number of non-hydrogen atoms and hydrogen atoms in the chain respectively. The H(added) column lists the number of hydrogen atoms added and optimized by MolProbity. The Clashes column lists the number of clashes within the asymmetric unit, whereas Symm-Clashes lists symmetry-related clashes.

Mol	Chain	Non-H	H(model)	H(added)	Clashes	Symm-Clashes
1	A	2702	0	2718	54	0
1	B	2716	0	2720	94	1
2	A	29	0	0	1	0
2	B	29	0	0	2	0
3	B	1	0	0	1	0
4	A	106	0	0	7	0
4	B	139	0	0	6	0
All	All	5722	0	5438	146	1

The all-atom clashscore is defined as the number of clashes found per 1000 atoms (including hydrogen atoms). The all-atom clashscore for this structure is 13.

The worst 5 of 146 close contacts within the same asymmetric unit are listed below, sorted by their clash magnitude.

Atom-1	Atom-2	Interatomic distance (Å)	Clash overlap (Å)
1:B:150:LYS:CB	1:B:153:GLU:HG3	1.74	1.15
1:B:150:LYS:HB3	1:B:153:GLU:HG3	1.17	1.12
1:A:156:MET:HE3	1:A:230:PHE:CD1	1.89	1.07
1:A:366:GLU:OE1	1:A:393:LYS:NZ	1.88	1.05
1:A:451:LYS:HD3	1:A:477:SER:OG	1.57	1.05

All (1) symmetry-related close contacts are listed below. The label for Atom-2 includes the symmetry operator and encoded unit-cell translations to be applied.

Atom-1	Atom-2	Interatomic distance (Å)	Clash overlap (Å)
1:B:182:GLN:O	1:B:406:LYS:NZ[1_655]	1.95	0.25

5.3 Torsion angles ⓘ

5.3.1 Protein backbone ⓘ

In the following table, the Percentiles column shows the percent Ramachandran outliers of the chain as a percentile score with respect to all X-ray entries followed by that with respect to entries of similar resolution.

The Analysed column shows the number of residues for which the backbone conformation was analysed, and the total number of residues.

Mol	Chain	Analysed	Favoured	Allowed	Outliers	Percentiles	
1	A	325/359 (90%)	309 (95%)	14 (4%)	2 (1%)	21	27
1	B	329/359 (92%)	316 (96%)	13 (4%)	0	100	100
All	All	654/718 (91%)	625 (96%)	27 (4%)	2 (0%)	36	46

All (2) Ramachandran outliers are listed below:

Mol	Chain	Res	Type
1	A	220	TYR
1	A	323	GLN

5.3.2 Protein sidechains ⓘ

In the following table, the Percentiles column shows the percent sidechain outliers of the chain as a percentile score with respect to all X-ray entries followed by that with respect to entries of similar resolution.

The Analysed column shows the number of residues for which the sidechain conformation was analysed, and the total number of residues.

Mol	Chain	Analysed	Rotameric	Outliers	Percentiles	
1	A	289/315 (92%)	264 (91%)	25 (9%)	9	12
1	B	290/315 (92%)	263 (91%)	27 (9%)	8	11
All	All	579/630 (92%)	527 (91%)	52 (9%)	9	12

5 of 52 residues with a non-rotameric sidechain are listed below:

Mol	Chain	Res	Type
1	B	149	VAL
1	B	179	ARG
1	B	400	ASP
1	B	151	ASN
1	B	158	ARG

Sometimes sidechains can be flipped to improve hydrogen bonding and reduce clashes. 5 of 16 such sidechains are listed below:

Mol	Chain	Res	Type
1	B	404	ASN

Continued on next page...

Continued from previous page...

Mol	Chain	Res	Type
1	B	369	GLN
1	B	172	GLN
1	B	320	GLN
1	A	475	GLN

5.3.3 RNA ⓘ

There are no RNA molecules in this entry.

5.4 Non-standard residues in protein, DNA, RNA chains ⓘ

4 non-standard protein/DNA/RNA residues are modelled in this entry.

In the following table, the Counts columns list the number of bonds (or angles) for which Mogul statistics could be retrieved, the number of bonds (or angles) that are observed in the model and the number of bonds (or angles) that are defined in the Chemical Component Dictionary. The Link column lists molecule types, if any, to which the group is linked. The Z score for a bond length (or angle) is the number of standard deviations the observed value is removed from the expected value. A bond length (or angle) with $|Z| > 2$ is considered an outlier worth inspection. RMSZ is the root-mean-square of all Z scores of the bond lengths (or angles).

Mol	Type	Chain	Res	Link	Bond lengths			Bond angles		
					Counts	RMSZ	$\# Z > 2$	Counts	RMSZ	$\# Z > 2$
1	PTR	A	321	1	15,16,17	0.53	0	17,22,24	1.01	1 (5%)
1	SEP	B	145	1	8,9,10	0.64	0	7,12,14	0.72	0
1	PTR	B	321	1	15,16,17	0.59	0	17,22,24	1.20	2 (11%)
1	SEP	A	145	1	8,9,10	0.60	0	7,12,14	0.89	0

In the following table, the Chirals column lists the number of chiral outliers, the number of chiral centers analysed, the number of these observed in the model and the number defined in the Chemical Component Dictionary. Similar counts are reported in the Torsion and Rings columns. '-' means no outliers of that kind were identified.

Mol	Type	Chain	Res	Link	Chirals	Torsions	Rings
1	PTR	A	321	1	-	0/10/11/13	0/1/1/1
1	SEP	B	145	1	-	1/6/8/10	-
1	PTR	B	321	1	-	0/10/11/13	0/1/1/1
1	SEP	A	145	1	-	1/6/8/10	-

There are no bond length outliers.

All (3) bond angle outliers are listed below:

Mol	Chain	Res	Type	Atoms	Z	Observed(°)	Ideal(°)
1	B	321	PTR	O3P-P-OH	2.96	114.06	105.32
1	A	321	PTR	O2P-P-OH	2.76	113.48	105.32
1	B	321	PTR	OH-CZ-CE1	2.10	125.52	119.22

There are no chirality outliers.

All (2) torsion outliers are listed below:

Mol	Chain	Res	Type	Atoms
1	A	145	SEP	CA-CB-OG-P
1	B	145	SEP	CA-CB-OG-P

There are no ring outliers.

3 monomers are involved in 5 short contacts:

Mol	Chain	Res	Type	Clashes	Symm-Clashes
1	A	321	PTR	2	0
1	B	145	SEP	2	0
1	A	145	SEP	1	0

5.5 Carbohydrates [i](#)

There are no oligosaccharides in this entry.

5.6 Ligand geometry [i](#)

Of 3 ligands modelled in this entry, 1 is monoatomic - leaving 2 for Mogul analysis.

In the following table, the Counts columns list the number of bonds (or angles) for which Mogul statistics could be retrieved, the number of bonds (or angles) that are observed in the model and the number of bonds (or angles) that are defined in the Chemical Component Dictionary. The Link column lists molecule types, if any, to which the group is linked. The Z score for a bond length (or angle) is the number of standard deviations the observed value is removed from the expected value. A bond length (or angle) with $|Z| > 2$ is considered an outlier worth inspection. RMSZ is the root-mean-square of all Z scores of the bond lengths (or angles).

Mol	Type	Chain	Res	Link	Bond lengths			Bond angles		
					Counts	RMSZ	$\# Z > 2$	Counts	RMSZ	$\# Z > 2$
2	RK8	B	501	-	32,32,32	0.62	0	43,46,46	2.01	8 (18%)
2	RK8	A	501	-	32,32,32	0.66	0	43,46,46	3.19	8 (18%)

In the following table, the Chirals column lists the number of chiral outliers, the number of chiral

centers analysed, the number of these observed in the model and the number defined in the Chemical Component Dictionary. Similar counts are reported in the Torsion and Rings columns. '-' means no outliers of that kind were identified.

Mol	Type	Chain	Res	Link	Chirals	Torsions	Rings
2	RK8	B	501	-	-	1/12/12/12	0/4/4/4
2	RK8	A	501	-	-	4/12/12/12	0/4/4/4

There are no bond length outliers.

The worst 5 of 16 bond angle outliers are listed below:

Mol	Chain	Res	Type	Atoms	Z	Observed(°)	Ideal(°)
2	A	501	RK8	O1-C16-N7	-15.17	108.56	119.49
2	A	501	RK8	O1-C16-C17	11.88	129.06	115.85
2	B	501	RK8	O1-C16-N7	10.07	126.75	119.49
2	B	501	RK8	O1-C16-C17	-4.29	111.08	115.85
2	A	501	RK8	BR1-C20-C19	3.28	122.03	118.69

There are no chirality outliers.

All (5) torsion outliers are listed below:

Mol	Chain	Res	Type	Atoms
2	A	501	RK8	N7-C16-O1-C2
2	A	501	RK8	C17-C16-O1-C2
2	A	501	RK8	O1-C2-C3-N1
2	B	501	RK8	C1-C2-O1-C16
2	A	501	RK8	C1-C2-C3-N1

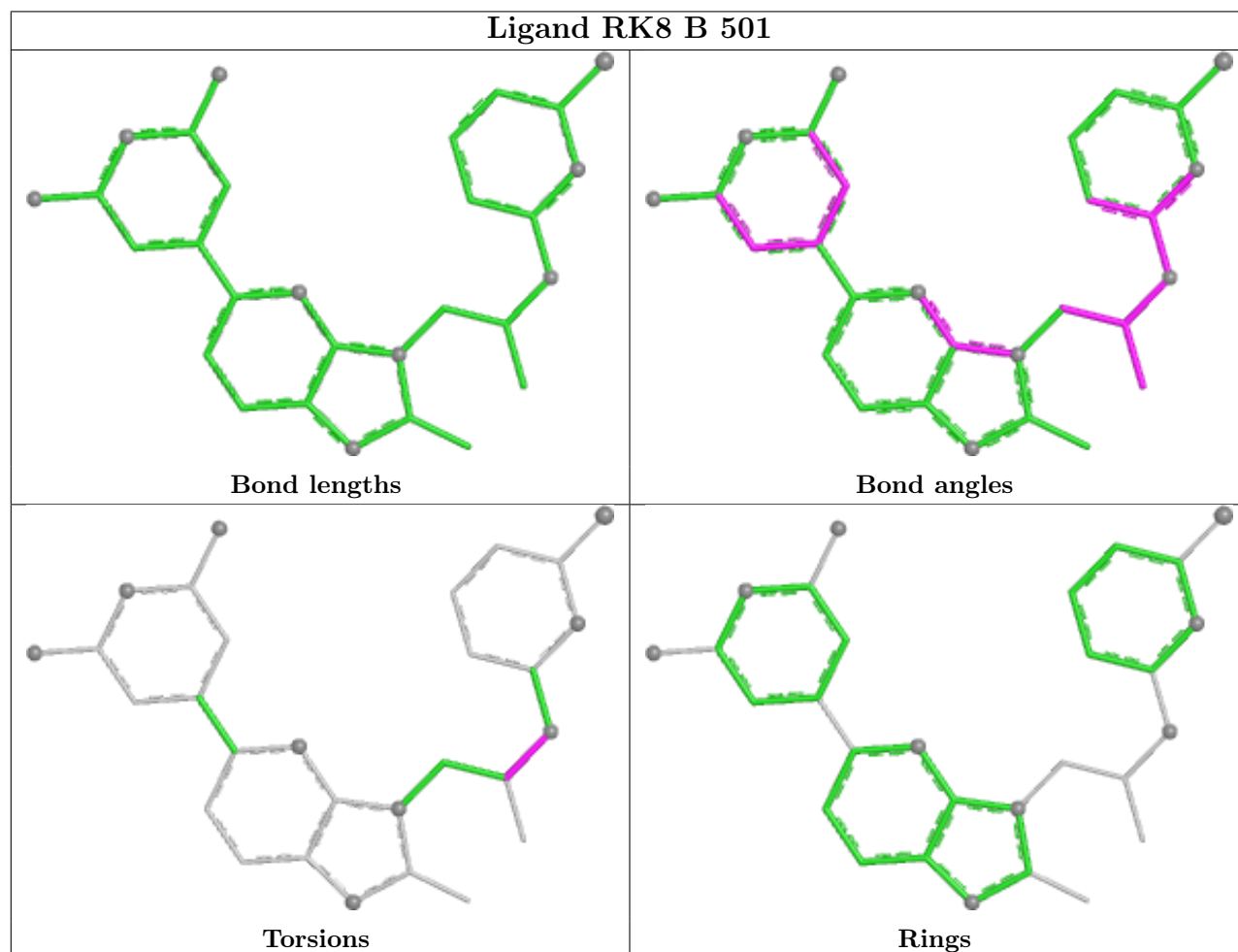
There are no ring outliers.

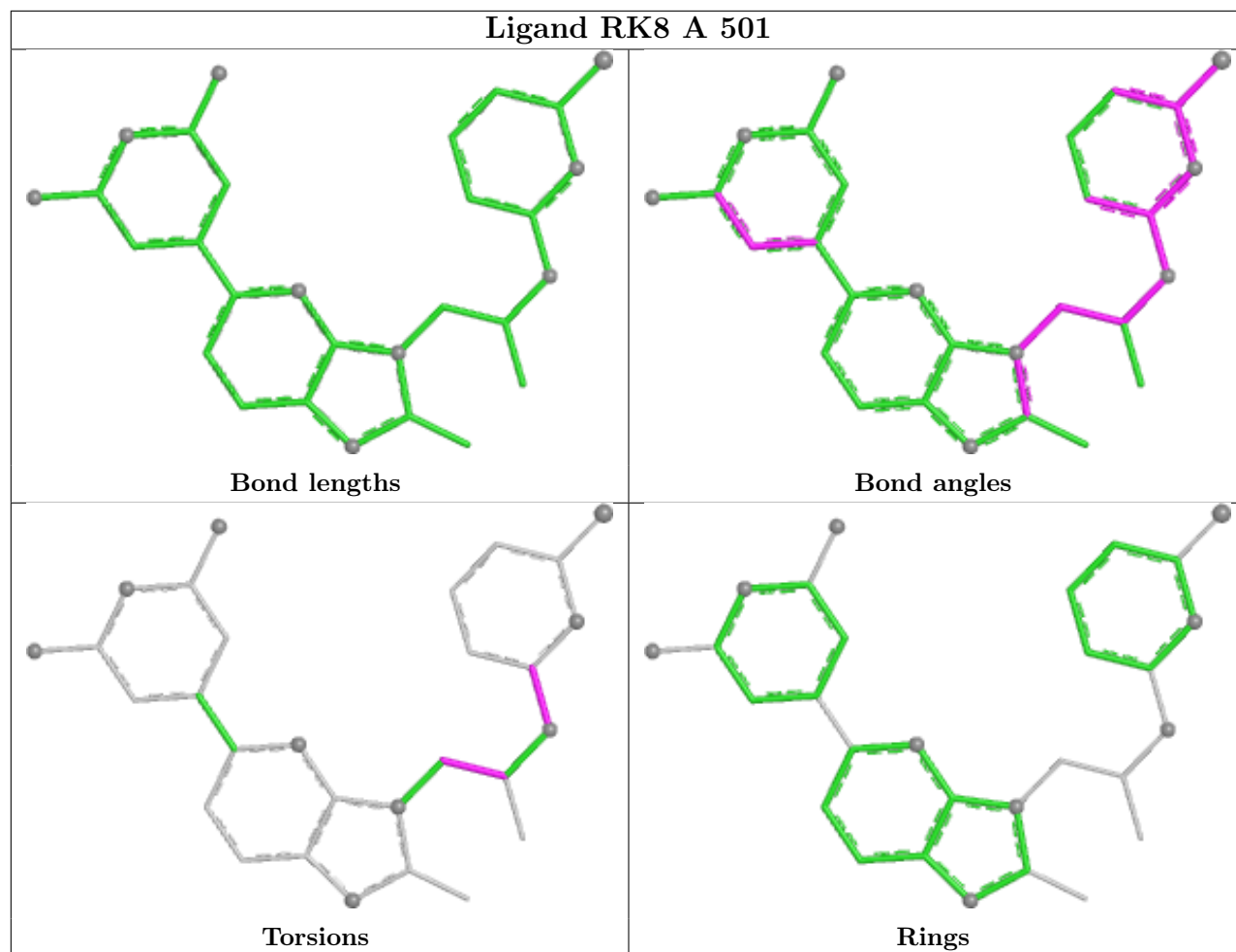
2 monomers are involved in 3 short contacts:

Mol	Chain	Res	Type	Clashes	Symm-Clashes
2	B	501	RK8	2	0
2	A	501	RK8	1	0

The following is a two-dimensional graphical depiction of Mogul quality analysis of bond lengths, bond angles, torsion angles, and ring geometry for all instances of the Ligand of Interest. In addition, ligands with molecular weight > 250 and outliers as shown on the validation Tables will also be included. For torsion angles, if less than 5% of the Mogul distribution of torsion angles is within 10 degrees of the torsion angle in question, then that torsion angle is considered an outlier. Any bond that is central to one or more torsion angles identified as an outlier by Mogul will be highlighted in the graph. For rings, the root-mean-square deviation (RMSD) between the ring in question and similar rings identified by Mogul is calculated over all ring torsion angles. If the

average RMSD is greater than 60 degrees and the minimal RMSD between the ring in question and any Mogul-identified rings is also greater than 60 degrees, then that ring is considered an outlier. The outliers are highlighted in purple. The color gray indicates Mogul did not find sufficient equivalents in the CSD to analyse the geometry.





5.7 Other polymers [i](#)

There are no such residues in this entry.

5.8 Polymer linkage issues [i](#)

There are no chain breaks in this entry.

6 Fit of model and data [i](#)

6.1 Protein, DNA and RNA chains [i](#)

In the following table, the column labelled ‘#RSRZ> 2’ contains the number (and percentage) of RSRZ outliers, followed by percent RSRZ outliers for the chain as percentile scores relative to all X-ray entries and entries of similar resolution. The OWAB column contains the minimum, median, 95th percentile and maximum values of the occupancy-weighted average B-factor per residue. The column labelled ‘Q< 0.9’ lists the number of (and percentage) of residues with an average occupancy less than 0.9.

Mol	Chain	Analysed	<RSRZ>	#RSRZ>2	OWAB(Å ²)	Q<0.9
1	A	331/359 (92%)	0.84	24 (7%) 21 23	16, 33, 58, 85	2 (0%)
1	B	333/359 (92%)	0.85	35 (10%) 11 13	15, 31, 71, 97	2 (0%)
All	All	664/718 (92%)	0.85	59 (8%) 15 17	15, 33, 65, 97	4 (0%)

The worst 5 of 59 RSRZ outliers are listed below:

Mol	Chain	Res	Type	RSRZ
1	A	440	GLY	5.6
1	A	148	ILE	4.6
1	B	398	LEU	4.5
1	B	399	PRO	4.3
1	B	408	THR	4.3

6.2 Non-standard residues in protein, DNA, RNA chains [i](#)

In the following table, the Atoms column lists the number of modelled atoms in the group and the number defined in the chemical component dictionary. The B-factors column lists the minimum, median, 95th percentile and maximum values of B factors of atoms in the group. The column labelled ‘Q< 0.9’ lists the number of atoms with occupancy less than 0.9.

Mol	Type	Chain	Res	Atoms	RSCC	RSR	B-factors(Å ²)	Q<0.9
1	SEP	B	145	10/11	0.81	0.11	55,59,67,68	5
1	PTR	A	321	16/17	0.83	0.11	36,41,60,61	0
1	PTR	B	321	16/17	0.84	0.12	35,39,55,57	0
1	SEP	A	145	10/11	0.86	0.10	40,47,58,66	0

6.3 Carbohydrates [i](#)

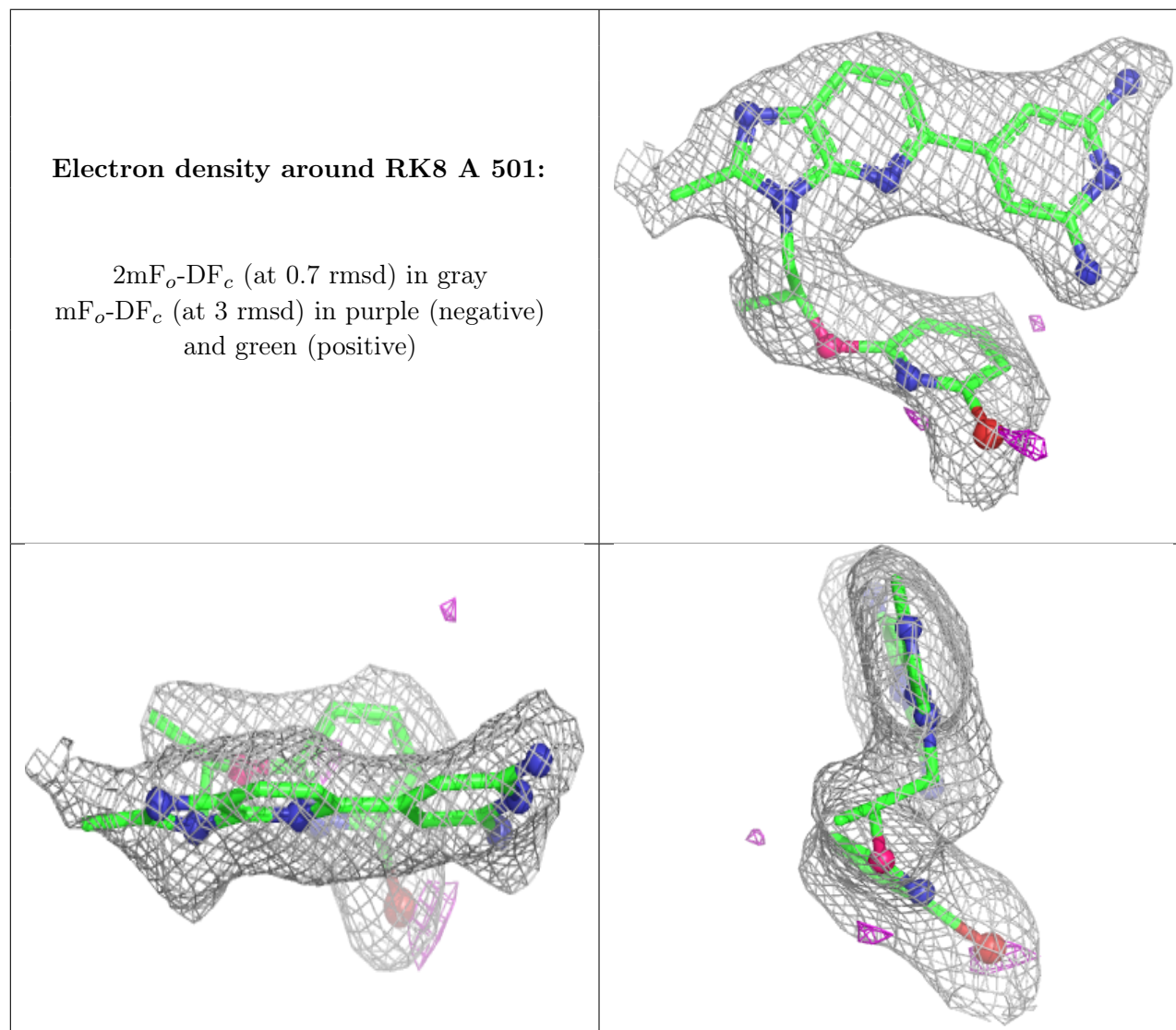
There are no oligosaccharides in this entry.

6.4 Ligands ⓘ

In the following table, the Atoms column lists the number of modelled atoms in the group and the number defined in the chemical component dictionary. The B-factors column lists the minimum, median, 95th percentile and maximum values of B factors of atoms in the group. The column labelled 'Q< 0.9' lists the number of atoms with occupancy less than 0.9.

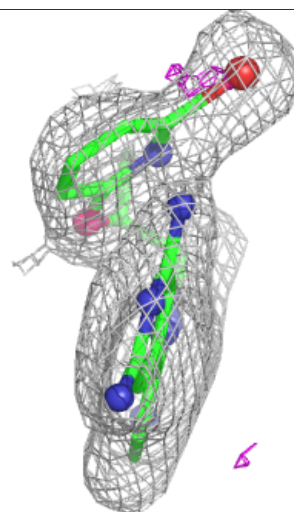
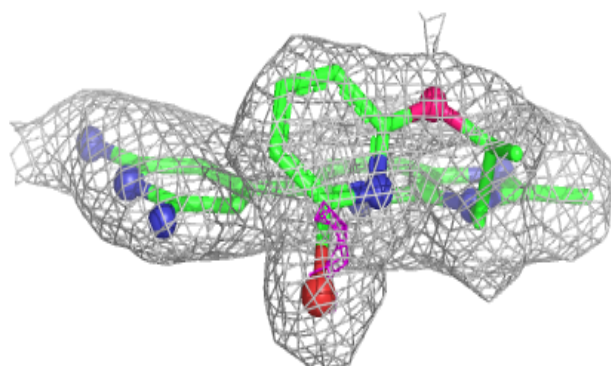
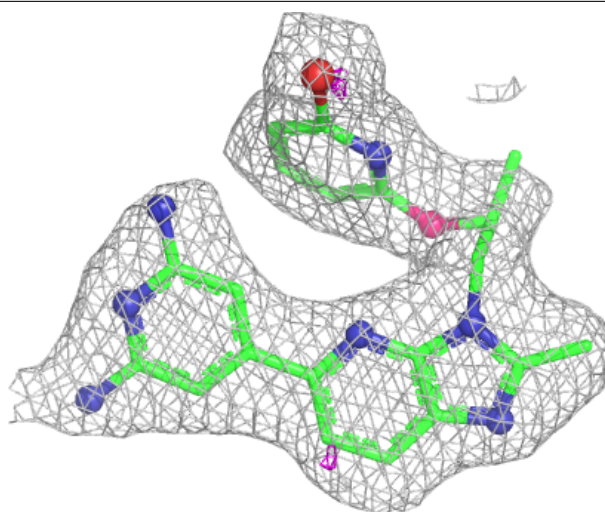
Mol	Type	Chain	Res	Atoms	RSCC	RSR	B-factors(Å ²)	Q<0.9
2	RK8	A	501	29/29	0.84	0.13	25,31,52,68	1
2	RK8	B	501	29/29	0.87	0.11	20,22,44,63	1
3	CL	B	502	1/1	0.94	0.11	54,54,54,54	0

The following is a graphical depiction of the model fit to experimental electron density of all instances of the Ligand of Interest. In addition, ligands with molecular weight > 250 and outliers as shown on the geometry validation Tables will also be included. Each fit is shown from different orientation to approximate a three-dimensional view.



Electron density around RK8 B 501:

$2mF_o-DF_c$ (at 0.7 rmsd) in gray
 mF_o-DF_c (at 3 rmsd) in purple (negative)
and green (positive)



6.5 Other polymers [i](#)

There are no such residues in this entry.